

**NOTICE OF ACCEPTANCE (NOA)**

**Crawford Tracy Corporation**  
**3301 S. W. 13 th Drive**  
**DeerField Beach, Fl. 33442**

**SCOPE:**

This NOA is being issued under the applicable rules and regulations governing the use of construction materials. The documentation submitted has been reviewed and accepted by Miami-Dade County BNC -Product Control Section to be used in Miami Dade County and other areas where allowed by the Authority Having Jurisdiction (AHJ).

This NOA shall not be valid after the expiration date stated below. The Miami-Dade County Product Control Section (In Miami Dade County) and/or the AHJ (in areas other than Miami Dade County) reserve the right to have this product or material tested for quality assurance purposes. If this product or material fails to perform in the accepted manner, the manufacturer will incur the expense of such testing and the AHJ may immediately revoke, modify, or suspend the use of such product or material within their jurisdiction. BNC reserves the right to revoke this acceptance, if it is determined by Miami-Dade County Product Control Section that this product or material fails to meet the requirements of the applicable building code.

This product is approved as described herein, and has been designed to comply with the Florida Building Code, including the High Velocity Hurricane Zone.

**DESCRIPTION: Series "Pro-Tech 7SG " Aluminum Glazed Curtain Wall System-Non-Impact**

**APPROVAL DOCUMENT:** Drawing No. **W04-105**, titled "Pro-Tech 7SG Alum. Curtain Wall System (NI)", sheets 1 through 5, 5.1, 6 through 17 of 17, dated 12/30/04 and last revised on May 16, 2011, prepared by Al-Farooq Corporation, signed and sealed by Javad Ahmad, P. E., bearing the Miami-Dade County Product Control Revision stamp with the Notice of Acceptance number and expiration date by the Miami-Dade County Product Control Section.

**MISSILE IMPACT RATING: None: Hurricane Protection System, complying with FBC is required.**

1. See Design Pressure (DP), sheets 1 thru 8. Lower DP from mullion, glass and/or anchor shall control.
2. Installation to steel structure is limited as approved in NOA. Embedded steel stud not a part of this approval.
3. Min 1/4" metal thickness is required for installation into Metal substrate.

**LABELING:** Each unit shall bear a permanent label with the manufacturer's name or logo, city, state and Series/Model and following statement: "Miami-Dade County Product Control Approved", unless otherwise noted herein.

**RENEWAL** of this NOA shall be considered after a renewal application has been filed and there has been no change in the applicable building code negatively affecting the performance of this product.

**TERMINATION** of this NOA will occur after the expiration date or if there has been a revision or change in the materials, use, and/or manufacture of the product or process. Misuse of this NOA as an endorsement of any product, for sales, advertising or any other purposes shall automatically terminate this NOA. Failure to comply with any section of this NOA shall be cause for termination and removal of NOA.

**ADVERTISEMENT:** The NOA number preceded by the words Miami-Dade County, Florida, and followed by the expiration date may be displayed in advertising literature. If any portion of the NOA is displayed, then it shall be done in its entirety.

**INSPECTION:** A copy of this entire NOA shall be provided to the user by the manufacturer or its distributors and shall be available for inspection at the job site at the request of the Building Official.

This NOA **revises & renews NOA # 08-0415.04** and consists of this page 1 and evidence pages E-1, as well as approval document mentioned above.

The submitted documentation was reviewed by **Ishaq I. Chanda, P.E.**



6/9/11

**NOA No 10-1213.08**  
**Expiration Date: September 14, 2016**  
**Approval Date: June 16, 2011**  
**Page 1**

**NOTICE OF ACCEPTANCE: EVIDENCE SUBMITTED**

**A. DRAWINGS**

1. Manufacturer's die drawings and sections (transferred from file # **08-0415.04**).
2. Drawing No. **W04-105**, titled "Pro-Tech 7SG Alum Curtain Wall System (NI)", sheets 1 through 5, 5.1, 6 through 17 of 17, dated 12/30/04 and last revised on May 16, 2011, prepared by Al-Farooq Corporation, signed and sealed by Javad Ahmad, P.E.

**B. TESTS (transferred from file # **08-0415.04**)**

1. Test reports on 1) Air Infiltration Test, per TAS 202-94  
2) Uniform Static Air Pressure Test, Loading per TAS 202-94  
3) Water Resistance Test, per TAS 202-94  
Along with installation diagram of aluminum glazed curtain wall system marked-up by American Test Lab of South Florida. Test Report No. **ATL 0726.01-04**, dated 08-23-04 and last revised on 03/10/2006, signed and sealed by William R. Mehner, P.E.
2. Test reports on 1) Uniform Static Air Pressure Test, Loading per TAS 202-94  
Along with installation diagram of aluminum glazed curtain wall system marked-up by American Test Lab of South Florida, Test Report No. **ATL 0419.02-04**, dated 08-19-04 signed & sealed by William R. Mehner, P.E.
3. Test reports on 1) Uniform Static Air Pressure Test, Loading per TAS 202-94  
Along with installation diagram of aluminum glazed curtain wall system marked-up by American Test Lab of South Florida, Test Report No. **ATL 1129.01-04**, dated 01-05-05 signed & sealed by William R. Mehner, P.E.
4. Additional Test report **ATL-1130.01-07** dated 01/29/08 for insulated glazed C.W. Sys per TAS 202, issued by American Test Lab, signed & sealed by William R. Mehner, P.E. & Henry Hatem, P. E.

**C. CALCULATIONS**

1. Anchor verification calculations and structural analysis, complying with FBC-2007, prepared by Al Farooq-Corporation, dated 11/23/10, 04/15/11 and last revised on May 16, 2011, signed and sealed by Javad Ahmad, P.E.
2. Anchor calculations and structural analysis, dated 03-17-08 and revised on 09/08/2008, prepared by Al-Farooq Corporation, signed and sealed by late Dr. Humayoun Farooq, P. E.(file # **08-0415.04**)
3. Glazing complies w/ ASTM E-1300-02 & -04

**D. QUALITY ASSURANCE**

1. Miami Dade Building and Neighborhood Compliance Department (BNC).

**E. MATERIAL CERTIFICATIONS**

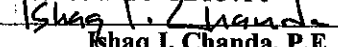
1. None

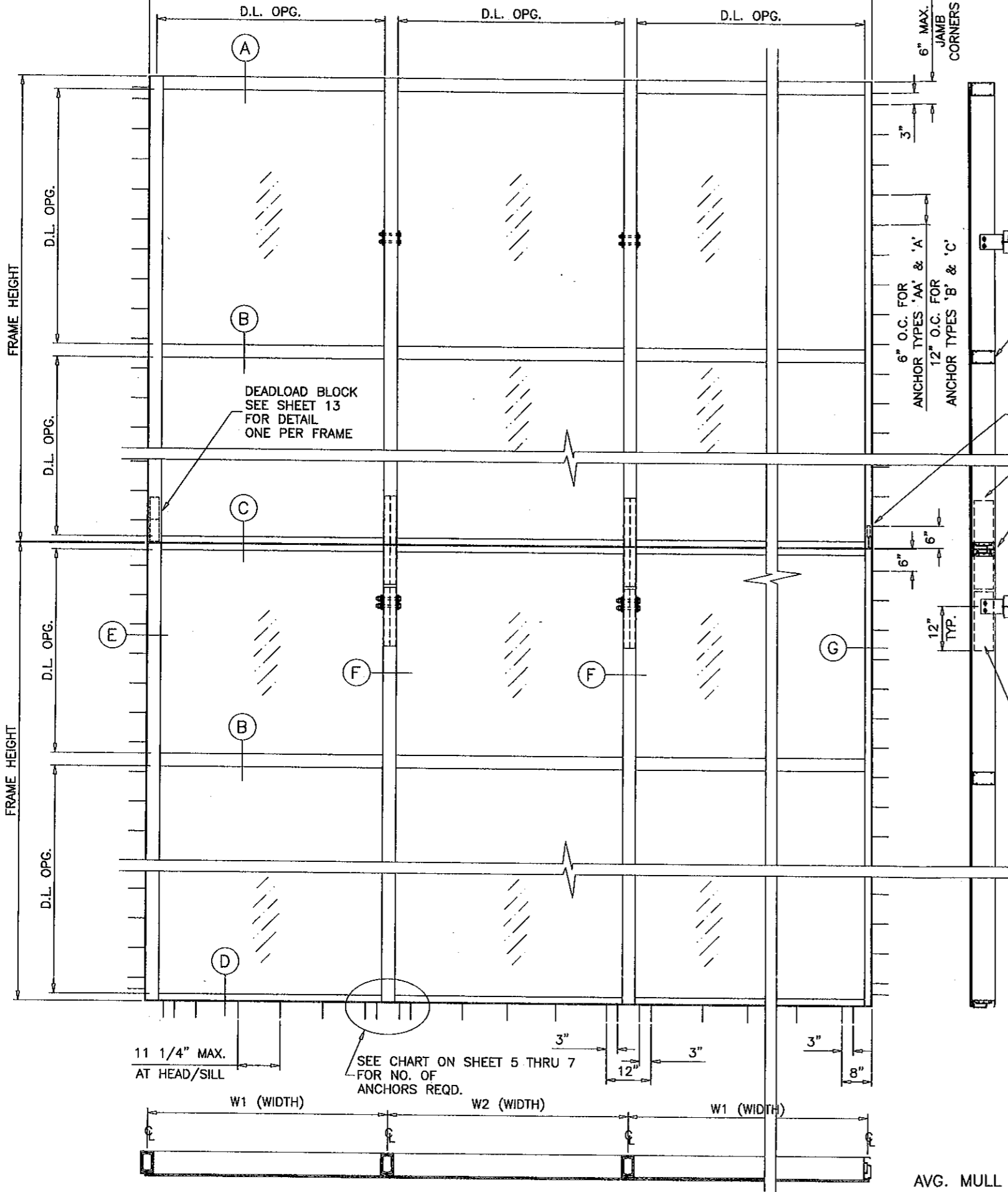
**F. STATEMENTS**

1. Statement letter of conformance and letter of no financial interest, prepared by Al-Farooq Corporation, dated 11/03/10, signed and sealed by Javad Ahmad, P.E.
2. Statement of Lab compliance, as part of above test reports.

**G. OTHER**

1. This NOA revises NOA # **08-0415.04**, expiring on Sep. 14, 2011.
2. Test proposals dated 11/06/2003 & 08/27/07, approved by BCCO.
3. Other associated NOA(s) with this file are NOA(s) # 10-1213.09 & # 10-1213.10

  
Ishaq I. Chanda, P.E.  
Product Control Examiner  
NOA No 10-1213.08  
Expiration Date: September 14, 2016  
Approval Date: June 16, 2011



SEE SHEETS 14&15 FOR DETAILS

FRAME HORIZONTAL

DEADLOAD BLOCK SEE SHEET 13 FOR DETAIL ONE PER FRAME

SPLICE 24' LONG MIN.

EXPANSION JOINT

SEE SHEET 14&15 FOR DETAILS

SPLICE REINF. 16" LONG AT ANCHOR LOCATION

**PRO-TECH 7SG ALUM CURTAIN WALL SYSTEM**

THIS SYSTEM IS NOT RATED FOR IMPACT.  
 MIAMI-DADE COUNTY APPROVED IMPACT RESISTANT SHUTTERS ARE REQUIRED.  
 SEE SHEETS 2 THRU 8 FOR DESIGN LOAD RATING.  
 CODE REQUIREMENTS FOR SAFEGUARDS MUST BE OBSERVED.

THIS PRODUCT HAS BEEN DESIGNED AND TESTED TO COMPLY WITH THE REQUIREMENTS OF THE FLORIDA BUILDING CODE 2007 EDITION INCLUDING HIGH VELOCITY HURRICANE ZONE (HVHZ).

WOOD BUCKS BY OTHERS, MUST BE ANCHORED PROPERLY TO TRANSFER LOADS TO THE STRUCTURE.

ANCHORS SHALL BE AS LISTED, SPACED AS SHOWN ON DETAILS, ANCHORS EMBEDMENT TO BASE MATERIAL SHALL BE BEYOND WALL DRESSING OR STUCCO. ANCHORING OR LOADING CONDITIONS NOT SHOWN IN THESE DETAILS ARE NOT PART OF THIS APPROVAL.

A LOAD DURATION INCREASE IS USED IN DESIGN OF ANCHORS INTO WOOD ONLY.

MATERIALS INCLUDING BUT NOT LIMITED TO STEEL/METAL SCREWS, THAT COME INTO CONTACT WITH OTHER DISSIMILAR MATERIALS SHALL MEET THE REQUIREMENTS OF 2007 FLORIDA BLDG. CODE SECTION 2003.8.4.

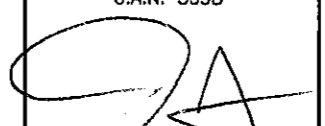
**INSTRUCTIONS:**

USE CHARTS AS FOLLOWS.

- STEP 1** DETERMINE DESIGN WIND LOAD REQUIREMENT BASED ON WIND VELOCITY, BLDG. HEIGHT, WIND ZONE USING APPLICABLE ASCE 7 STANDARD.
- STEP 2** CHECK MULLION CAPACITY FOR A GIVEN SPACING AND HEIGHT USING CHARTS ON SHEET 2 FOR SINGLE SPANS, AND CHARTS ON SHEET 3 FOR EQUAL MULTIPLE SPANS.
- STEP 3** SEE CHART ON SHEET 4 FOR DESIGN LOAD CAPACITY OF DESIRED GLASS SIZE.
- STEP 4** USING CHART ON SHEET 5, 5.1 THRU 7 SELECT ANCHOR OPTION WITH DESIGN RATING MORE THAN DESIGN LOAD SPECIFIED IN STEP 1 ABOVE.
- STEP 5** FOR CURTAIN WALL INTERMEDIATE ANCHOR CAPACITY SEE SHEETS 14 AND 15.
- STEP 6** THE LOWEST VALUE RESULTING FROM STEPS 2, 3, 4 AND 5 SHALL APPLY TO ENTIRE SYSTEM.

**PRODUCT REVISED**  
 as complying with the Florida Building Code  
 Adoption No. 10-1213.08  
 Expiration Date 5/14/2016  
 By: *Ishag I. Chant*  
 Licensed Professional Engineer

**MONOLITHIC GLASS**  
**MONOLITHIC INSULATING GLASS**  
**NON-IMPACT**

Engr: JAVAD AHMAD  
 CIVIL  
 FLA. PE # 70592  
 C.A.N. 3538  
  
**MAY 16 2011**

$$\text{AVG. MULL SPACING} = \frac{W1 + W2}{2}$$

TYPICAL ELEVATION

**af c**  
**AL-FAROOQ CORPORATION**  
 ENGINEERS & PRODUCT DEVELOPMENT  
 1235 S.W. 87 AVE  
 MIAMI, FLORIDA 33174  
 TEL (305) 264-8100 FAX (305) 262-6978  
 STORE \W04-105CTC

PRO-TECH 7SG ALUM CURTAIN WALL SYSTEM (N.I.)  
**CRAWFORD TRACEY CORPORATION**  
 3301 SW 13TH DRIVE  
 DEERFIELD BEACH, FL. 33442-8101  
 TEL. (954) 688-6888 FAX. (954) 688-6889

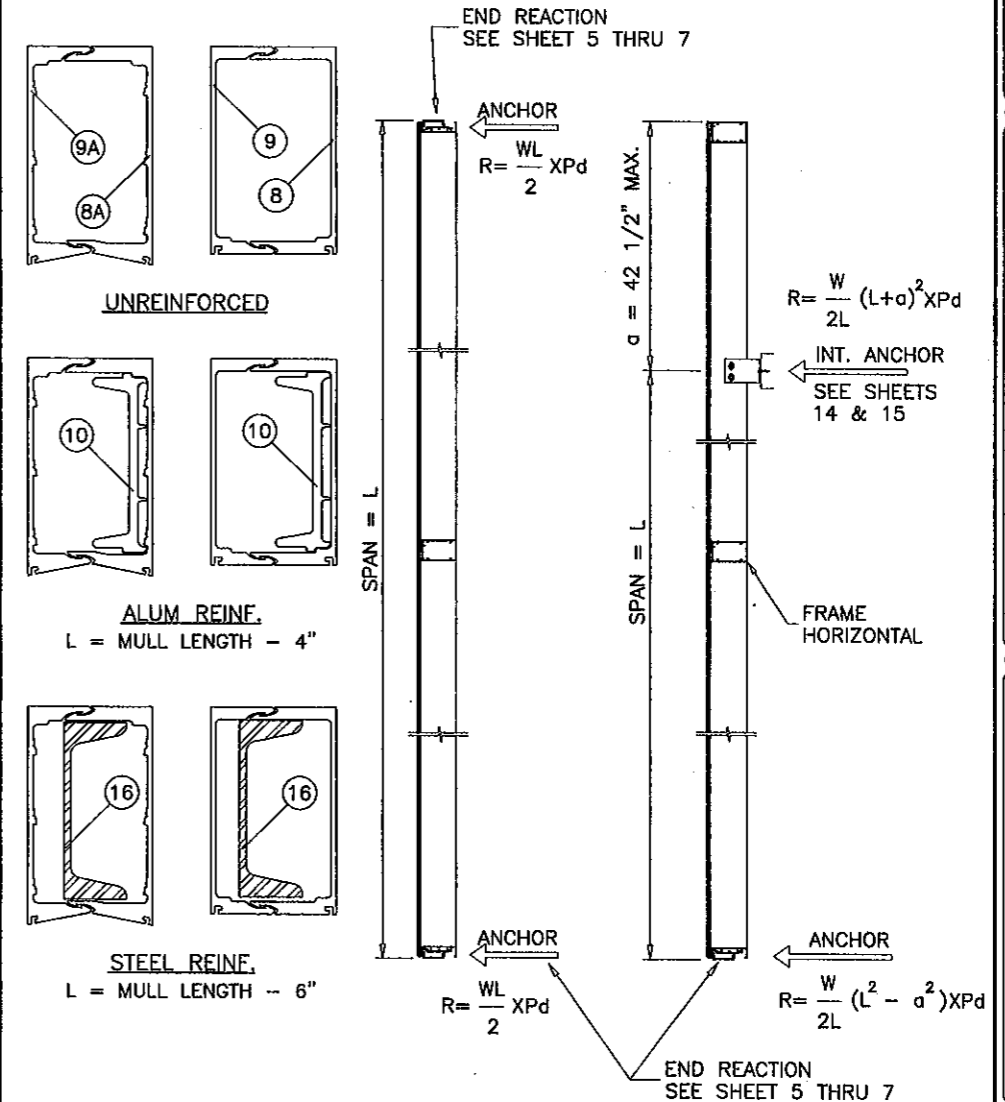
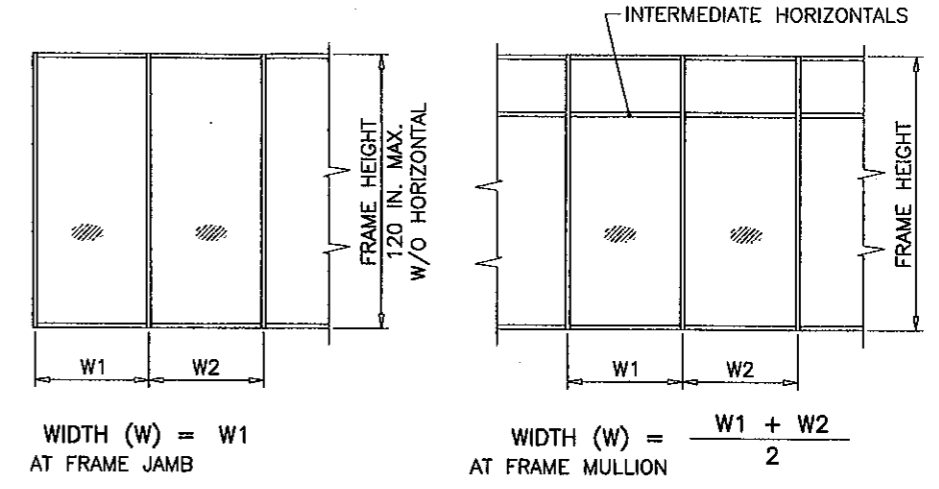
revisions:	no	date	by	description
	E	08.19.08		NO CHANGE THIS SHEET
	F	11.11.10		GENERAL REVISION
	G	03.02.11		REV. PER BCCO COMMENTS
	H	05.10.11		REV. PER BNC COMMENTS

date:	12-30-04
scale:	3/8"=1'-0"
dr. by:	HAMID
chk. by:	

drawing no.  
**W04-105**  
 sheet 1 of 17

MULLION LOAD CAPACITY - PSF SINGLE SPANS (WITH OR WITHOUT INTERMEDIATE HORIZONTALS)				
NOMINAL DIMS.		UNREINFORCED	ALUM REINF.	STEEL REINF.
WIDTH (W)	FRAME HEIGHT	EXT.(+) & INT.(-)	EXT.(+) & INT.(-)	EXT.(+) & INT.(-)
36"	120"	166.4	200.0	200.0
39"		153.6	200.0	200.0
42"		142.7	200.0	200.0
45"		133.1	200.0	200.0
48"		124.8	200.0	200.0
51"		117.5	197.4	200.0
54"		111.0	186.4	200.0
57"		105.1	176.6	198.3
60"		99.9	167.8	188.4
63"		-	159.8	179.4
66"		-	152.5	171.2
69"		-	145.9	163.8
72"		-	139.8	157.0
36"		126"	-	200.0
39"	-		200.0	200.0
42"	-		200.0	200.0
45"	-		193.2	200.0
48"	-		181.2	200.0
51"	-		170.5	200.0
54"	-		161.0	189.8
57"	-		152.6	179.8
60"	-		144.9	170.8
63"	-		138.0	162.7
66"	-		131.8	155.3
69"	-		126.0	148.6
72"	-		120.8	142.4
36"	132"		-	200.0
39"		-	193.9	200.0
42"		-	180.1	200.0
45"		-	168.1	200.0
48"		-	157.6	194.6
51"		-	148.3	183.1
54"		-	140.1	173.0
57"		-	132.7	163.9
60"		-	126.0	155.7
63"		-	120.0	148.3
66"		-	114.6	141.5
69"		-	109.6	135.4
72"		-	105.0	129.7
36"		138"	-	183.9
39"	-		169.7	200.0
42"	-		157.6	200.0
45"	-		147.1	189.9
48"	-		137.9	178.0
51"	-		129.8	167.6
54"	-		122.6	158.3
57"	-		116.1	149.9
60"	-		110.3	142.4
63"	-		105.1	135.6
66"	-		100.3	129.5
69"	-		95.9	123.9
72"	-		91.9	118.7

MULLION LOAD CAPACITY - PSF SINGLE SPANS (WITH OR WITHOUT INTERMEDIATE HORIZONTALS)					
NOMINAL DIMS.		UNREINFORCED	ALUM REINF.	STEEL REINF.	
WIDTH (W)	FRAME HEIGHT	EXT.(+) & INT.(-)	EXT.(+) & INT.(-)	EXT.(+) & INT.(-)	
36"	144"	-	161.8	200.0	
39"		-	149.4	200.0	
42"		-	138.7	186.9	
45"		-	129.5	174.4	
48"		-	121.4	163.5	
51"		-	114.2	153.9	
54"		-	107.9	145.3	
57"		-	102.2	137.7	
60"		-	97.1	130.8	
63"		-	92.5	124.6	
66"		-	88.3	118.9	
69"		-	84.4	113.7	
36"		150"	-	143.2	200.0
39"			-	132.2	185.5
42"	-		122.7	172.2	
45"	-		114.5	160.7	
48"	-		107.4	150.7	
51"	-		101.1	141.8	
54"	-		95.4	133.9	
57"	-		90.4	126.9	
60"	-		85.9	120.6	
63"	-		81.8	114.8	
66"	-		78.1	109.6	
36"	156"		-	127.3	185.8
39"			-	117.5	171.5
42"			-	109.1	159.2
45"		-	101.8	148.6	
51"		-	89.8	131.1	
54"		-	84.8	123.8	
57"		-	80.4	117.3	
60"		-	76.4	111.5	
63"		-	72.7	106.1	
36"		162"	-	113.6	172.3
39"			-	104.9	159.0
42"			-	97.4	147.6
45"			-	90.9	137.8
48"			-	85.2	129.2
51"	-		80.2	121.6	
54"	-		75.8	114.8	
57"	-		71.8	108.8	
60"	-		68.2	103.4	
36"	168"		-	101.9	160.2
39"			-	94.1	147.9
42"			-	87.3	137.3
45"			-	81.5	128.1
48"			-	76.4	120.1
51"		-	71.9	113.1	
54"		-	67.9	106.8	
57"		-	64.4	101.2	
60"		-	61.1	96.1	



INTERMEDIATE ANCHOR WIND AND DEAD LOAD MUST NOT EXCEED INTERMEDIATE ANCHOR CAPACITY PER SHEETS 14 & 15.

PRODUCT REVISED  
as complying with the Florida Building Code  
Approval No 10-1213-00  
Expiration Date SEP 14, 2016

Engr: JAVAD AHMAD  
CIVIL  
FLA. PE # 70592  
C.A.N. 3538

MAY 16 2011

**AL-FAROOQ CORPORATION**  
ENGINEERS & PRODUCT DEVELOPMENT  
1235 S.W. 87 AVE  
MIAMI, FLORIDA 33174  
TEL. (305) 264-8100 FAX. (305) 262-6978  
STORE/W04-105CTC

PRO-TECH 75G ALUM CURTAIN WALL SYSTEM (N.I.)

**CRAWFORD TRACEY CORPORATION**  
3301 SW 13TH DRIVE  
DEERFIELD BEACH, FL. 33442-8101  
TEL. (954) 698-6888 FAX. (954) 698-6889

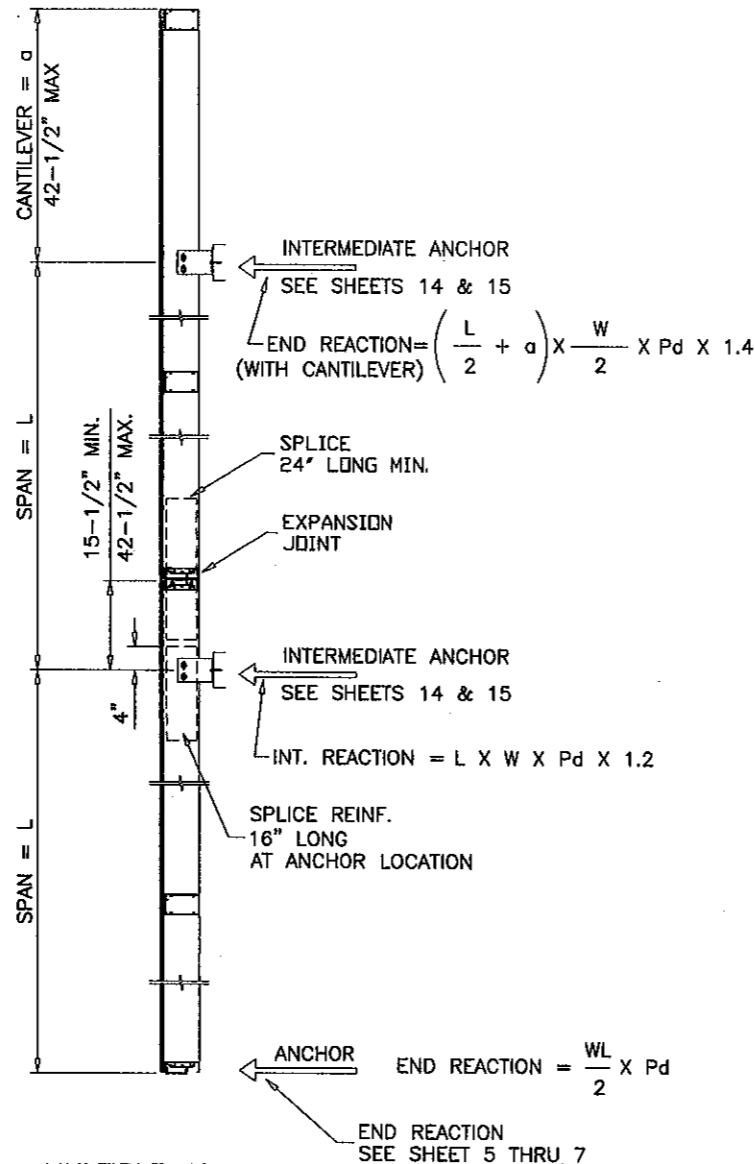
no.	date	by	description
E	08.19.08		NO CHANGE THIS SHEET
F	11.11.10		GENERAL REVISION
G	03.02.11		REV. PER BCCO COMMENTS
H	05.10.11		NO CHANGE THIS SHEET

date: 12-30-04  
scale: 3/8"=1'-0"  
dr. by: HAMID  
chk. by:

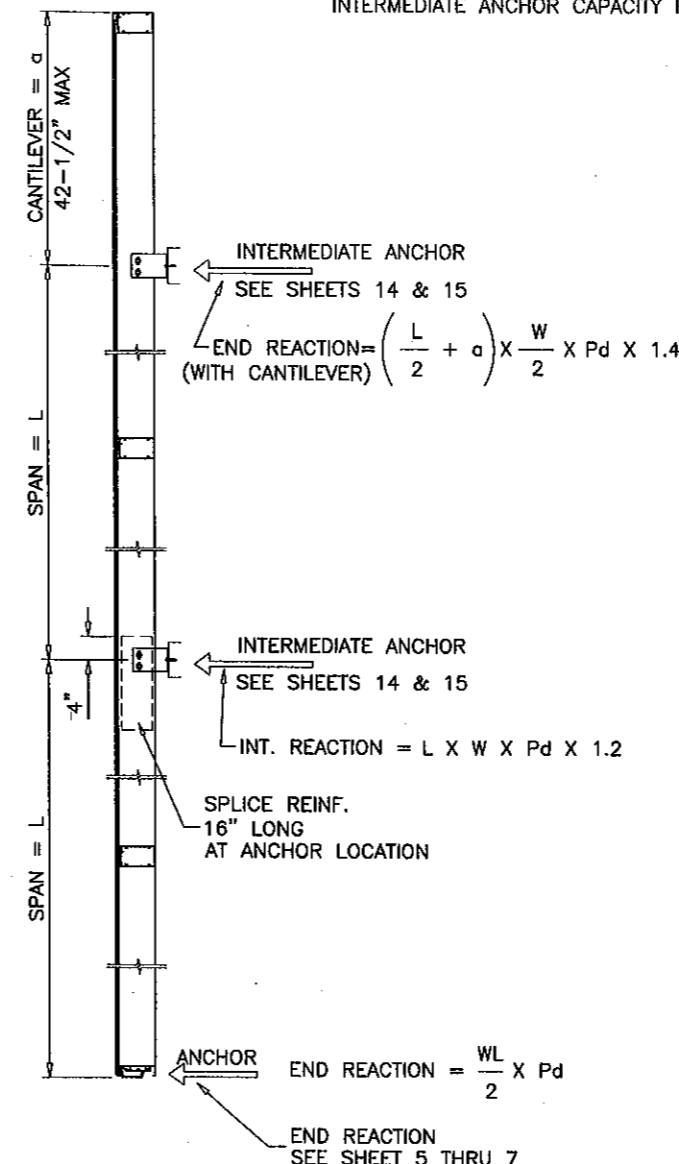
drawing no.  
**W04-105**  
sheet 2 of 17

MULLION LOAD CAPACITY - PSF  
MULTIPLE SPANS

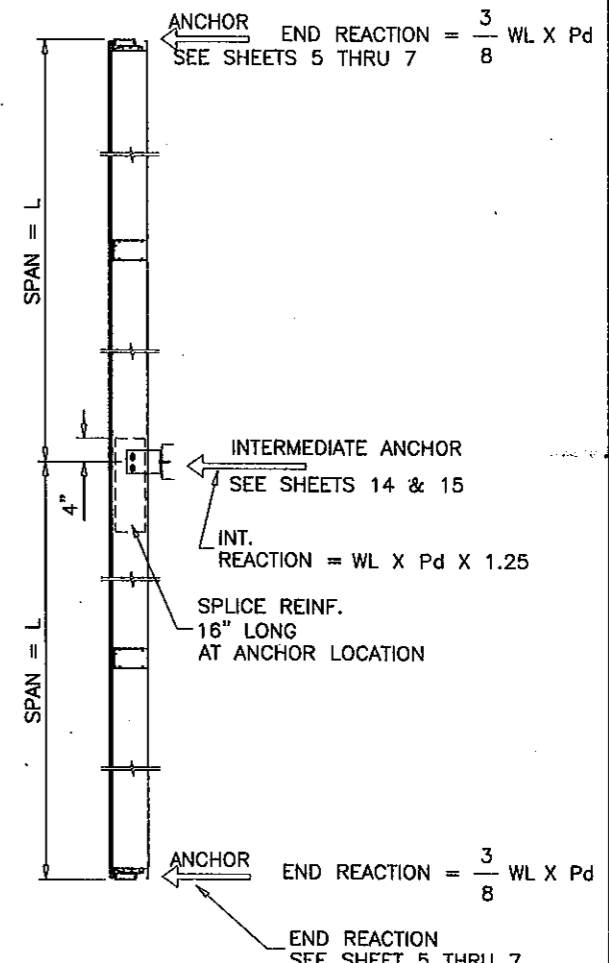
AVG. MULL SPACING	SPAN = L	UNREINFORCED EXT.(+)/INT.(-)	ALUM REINF. EXT.(+)/INT.(-)
36"	120"	194.5	200.0
42"		166.7	192.0
48"		145.8	168.0
54"		129.6	149.0
60"		116.7	134.0
66"		106.1	122.0
72"	97.2	112.0	
36"	126"	183.5	200.0
42"		157.3	183.0
48"		137.6	160.0
54"		122.3	142.0
60"		110.1	128.0
66"		100.1	116.0
72"	91.7	107.0	
36"	132"	174.0	200.0
42"		149.1	175.0
48"		130.5	153.0
54"		116.0	136.0
60"		104.4	122.0
66"		94.9	111.0
72"	87.0	102.0	
36"	138"	165.5	195.0
42"		141.9	167.0
48"		124.1	146.0
54"		110.3	130.0
60"		99.3	117.0
66"		90.3	106.0
72"	82.8	97.0	
36"	144"	157.8	187.0
42"		135.3	160.0
48"		118.4	140.0
54"		105.2	124.0
60"		94.7	112.0
66"		86.1	102.0
36"	150"	150.9	179.0
42"		129.3	154.0
48"		113.2	134.0
54"		100.6	119.0
60"		90.5	108.0
66"		82.3	98.0
36"	156"	144.5	172.0
42"		123.9	148.0
48"		108.4	129.0
54"		96.3	115.0
60"		86.7	103.0
36"		162"	138.7
42"	118.9		142.0
48"	104.0		124.0
54"	92.5		111.0
60"	83.2		100.0
36"	168"		132.5
42"		113.6	137.0
48"		99.4	120.0
54"		88.4	107.0
60"		79.5	96.0



**MULTIPLE SPANS**  
MULTIPLE SPANS WITH OR WITHOUT CANTILEVER  
USE TABLE ON THIS SHEET.

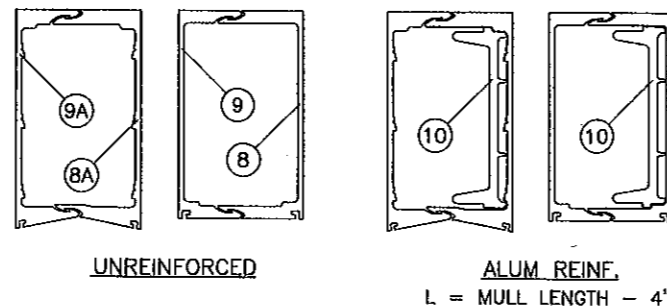


**TWO SPANS**  
TWO SPANS WITH CANTILEVER  
AND WITHOUT SPLICE/EXPANSION JOINT  
USE TABLE ON THIS SHEET.



**TWO SPANS**  
TWO SPANS WITHOUT CANTILEVER  
AND WITHOUT SPLICE/EXPANSION JOINT  
USE TABLE ON THIS SHEET.

UNEQUAL SPANS TO BE CHECKED ON JOB TO JOB BASIS  
END REACTIONS MAY CHANGE WITH LOCATION OF  
EXPANSION JOINT AND LENGTH OF CANTILEVER  
WORST CONDITION SHOWN.



INTERMEDIATE ANCHOR WIND AND DEAD LOAD MUST NOT EXCEED  
INTERMEDIATE ANCHOR CAPACITY PER SHEETS 14 & 15.

**PRODUCT REVISED**  
in complying with the Florida  
Building Code  
Acceptance No. 10-1213-08  
Expiration Date SEP 19, 2016  
by Ishtiaq I. Chaudhry  
Product Control

Engr: JAVAD AHMAD  
CIVIL  
FLA. PE # 70592  
C.A.N. 3538

*[Signature]*  
MAY 16 2011

**af**  
**AL-FAROOQ CORPORATION**  
ENGINEERS & PRODUCT DEVELOPMENT  
12335 S.W. 87 AVE  
MIAMI, FLORIDA 33174  
TEL. (305) 264-8100 FAX. (305) 262-6978  
STORE\W04-105CTC

PRO-TECH 7SG ALUM CURTAIN WALL SYSTEM (N.I.)  
**CRAWFORD TRACEY CORPORATION**  
3301 SW 13TH DRIVE  
DEERFIELD BEACH, FL. 33442-8101  
TEL. (954) 698-6888 FAX. (954) 698-6889

no	date	description
E	08.19.08	NO CHANGE THIS SHEET
F	11.11.10	GENERAL REVISION
G	03.02.11	REV. PER BCCO COMMENTS
H	05.10.11	REV. PER BNC COMMENTS

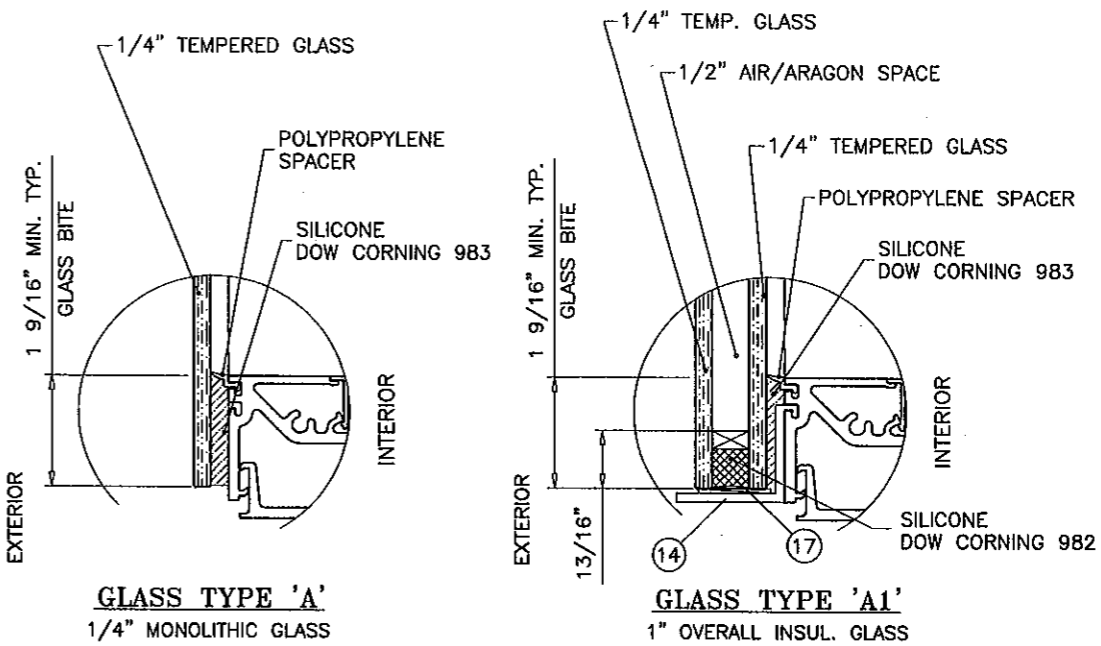
date: 12-30-04  
scale: 3/8"=1'-0"  
dr. by: HAMID  
chk. by:

drawing no.  
**W04-105**  
sheet 3 of 17

GLASS LOAD CAPACITY - PSF					
NOMINAL DIMS.		GLASS TYPE 'A'		GLASS TYPE 'A1'	
D.L.O. WIDTH	D.L.O. HEIGHT	EXT.(+)	INT.(-)	EXT.(+)	INT.(-)
42"	54"	120.0	189.9	120.0	189.9
45"		120.0	178.1	120.0	178.1
48"		120.0	167.8	120.0	167.8
51"		120.0	158.5	120.0	158.5
54"		120.0	150.3	120.0	150.3
57"		120.0	142.8	120.0	142.8
60"		120.0	136.1	120.0	136.1
63"		120.0	129.9	120.0	129.9
66"		120.0	124.3	120.0	124.3
69"		119.2	119.2	119.2	119.2
72"		114.4	114.4	114.4	114.4
42"		60"	120.0	189.9	120.0
45"	120.0		178.1	120.0	178.1
48"	120.0		167.8	120.0	167.8
51"	120.0		158.5	120.0	158.5
54"	120.0		150.3	120.0	150.3
57"	120.0		142.8	120.0	142.8
60"	120.0		136.1	120.0	136.1
63"	120.0		129.9	120.0	129.9
66"	120.0		124.3	120.0	124.3
69"	119.2		119.2	119.2	119.2
72"	114.4		114.4	114.4	114.4
42"	66"		120.0	189.9	120.0
45"		120.0	178.1	120.0	178.1
48"		120.0	167.8	120.0	167.8
51"		120.0	158.5	120.0	158.5
54"		120.0	150.3	120.0	150.3
57"		120.0	142.8	120.0	142.8
60"		120.0	136.1	120.0	136.1
63"		120.0	129.9	120.0	129.9
66"		120.0	124.3	120.0	124.3
69"		119.2	119.2	119.2	119.2
72"		114.4	114.4	114.4	114.4
42"		72"	120.0	170.5	120.0
45"	120.0		167.4	120.0	178.1
48"	120.0		164.4	120.0	167.8
51"	120.0		158.5	120.0	158.5
54"	120.0		150.3	120.0	150.3
57"	120.0		142.8	120.0	142.8
60"	120.0		136.1	120.0	136.1
63"	120.0		129.9	120.0	129.9
66"	120.0		124.3	120.0	124.3
69"	119.2		119.2	119.2	119.2
72"	114.4		114.4	114.4	114.4

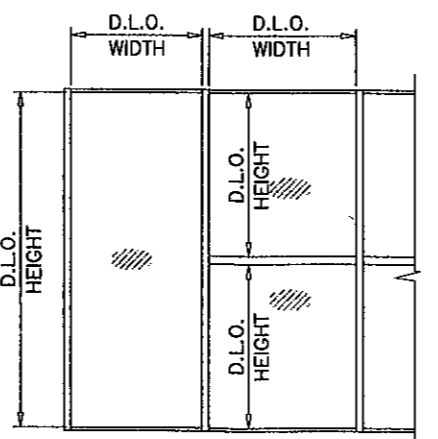
GLASS LOAD CAPACITY - PSF						
NOMINAL DIMS.		GLASS TYPE 'A'		GLASS TYPE 'A1'		
D.L.O. WIDTH	D.L.O. HEIGHT	EXT.(+)	INT.(-)	EXT.(+)	INT.(-)	
42"	78"	120.0	153.1	120.0	189.9	
45"		120.0	150.5	120.0	178.1	
48"		120.0	148.5	120.0	167.8	
51"		120.0	146.4	120.0	158.5	
54"		120.0	143.9	120.0	150.3	
57"		120.0	140.8	120.0	142.8	
60"		120.0	136.1	120.0	136.1	
63"		120.0	129.9	120.0	129.9	
66"		120.0	124.3	120.0	124.3	
69"		119.2	119.2	119.2	119.2	
72"		114.4	114.4	114.4	114.4	
42"		84"	120.0	138.8	120.0	189.9
45"	120.0		136.2	120.0	178.1	
48"	120.0		134.7	120.0	167.8	
51"	120.0		133.6	120.0	158.5	
54"	120.0		132.1	120.0	150.3	
57"	120.0		130.0	120.0	142.8	
60"	120.0		127.5	120.0	136.1	
63"	120.0		124.4	120.0	129.9	
66"	120.0		121.3	120.0	124.3	
69"	117.8		117.8	119.2	119.2	
72"	114.2		114.2	114.4	114.4	
42"	90"		120.0	127.0	120.0	189.9
45"		120.0	124.4	120.0	178.1	
48"		120.0	122.9	120.0	167.8	
51"		120.0	121.9	120.0	158.5	
54"		120.0	120.8	120.0	150.3	
57"		119.8	119.8	120.0	142.8	
60"		117.8	117.8	120.0	136.1	
63"		115.7	115.7	120.0	129.9	
66"		113.7	113.7	120.0	124.3	
69"		110.6	110.6	119.2	119.2	
72"		108.0	108.0	114.4	114.4	
42"		96"	117.8	117.8	120.0	189.9
45"	114.2		114.2	120.0	178.1	
48"	112.6		112.6	120.0	167.8	
51"	111.6		111.6	120.0	158.5	
54"	111.1		111.1	120.0	150.3	
57"	110.1		110.1	120.0	142.8	
60"	109.1		109.1	120.0	136.1	
63"	108.0		108.0	120.0	129.9	
66"	106.0		106.0	120.0	124.3	
42"	102"		110.6	110.6	120.0	189.9
45"			106.0	106.0	120.0	178.1
48"			103.9	103.9	120.0	167.8
51"		102.9	102.9	120.0	158.5	
54"		102.4	102.4	120.0	150.3	
57"		101.9	101.9	120.0	142.8	
60"		101.4	101.4	120.0	136.1	
63"		100.4	100.4	120.0	129.9	

GLASS LOAD CAPACITY - PSF									
NOMINAL DIMS.		GLASS TYPE 'A'		GLASS TYPE 'A1'					
D.L.O. WIDTH	D.L.O. HEIGHT	EXT.(+)	INT.(-)	EXT.(+)	INT.(-)				
42"	108"	104.4	104.4	120.0	189.9				
45"		99.3	99.3	120.0	178.1				
48"		96.8	96.8	120.0	167.8				
51"		95.2	95.2	120.0	158.5				
54"		94.7	94.7	120.0	150.3				
57"		94.2	94.2	120.0	142.8				
60"		94.2	94.2	120.0	136.1				
42"		114"	100.4	100.4	120.0	180.0			
45"			94.2	94.2	120.0	172.0			
48"			90.6	90.6	120.0	167.8			
51"			88.6	88.6	120.0	158.5			
54"			88.1	88.1	120.0	150.3			
57"	87.6		87.6	120.0	142.8				
42"	120"		96.8	96.8	120.0	173.0			
45"			90.1	90.1	120.0	163.0			
48"			86.0	86.0	120.0	156.0			
51"			83.5	83.5	120.0	156.0			
54"			82.4	82.4	120.0	150.3			
42"			126"	94.2	94.2	120.0	166.0		
45"		86.5		86.5	120.0	154.0			
48"		81.9		81.9	120.0	148.0			
51"		78.8		78.8	120.0	146.0			
42"		132"		91.6	91.6	120.0	161.0		
45"				84.0	84.0	120.0	148.0		
48"				78.8	78.8	120.0	141.0		
42"	138"			89.6	89.6	120.0	155.0		
45"				81.9	81.9	120.0	143.0		
42"				144"	88.1	88.1	120.0	151.0	
45"					79.9	79.9	120.0	139.0	
42"					150"	86.5	86.5	120.0	148.0
56-1/2"			116"			85.5	85.5	120.0	144.0



**GLAZING OPTIONS**

NOTE:  
 OPTION OF .019" CERAMIC FRIT ON ROOM SIDE SURFACE OF INNER PANE GLASS.  
 MAX. GLASS AREA LIMITED TO 22.2 SQ. FT. WITH ASPECT RATIO EQUAL OR LESS THAN 5.



NOTE:  
 GLASS CAPACITIES ON THIS SHEET ARE BASED ON ASTM E1300-04 (3 SEC. GUSTS).

Engr: JAVAD AHMAD  
 CIVIL  
 FLA. PE # 70592  
 C.A.N. 3538

*J.A.*  
 MAY 16 2011

**AL-FAROOQ CORPORATION**  
 ENGINEERS & PRODUCT DEVELOPMENT  
 1235 S.W. 87 AVE  
 MIAMI, FLORIDA 33174  
 TEL. (305) 264-8100 FAX. (305) 262-6978  
 STORE/W04-105C1C

---

PRO-TECH 7SG ALUM CURTAIN WALL SYSTEM (N.I.)  
**CRAWFORD TRACEY CORPORATION**  
 3301 SW 13TH DRIVE  
 DEERFIELD BEACH, FL. 33442-8101  
 TEL. (954) 698-6888 FAX. (954) 698-6889

no	date	description
E	08.19.08	REV. PER BECCO COMMENTS
F	11.11.10	GENERAL REVISION
G	03.02.11	REV. PER BECCO COMMENTS
H	05.10.11	REV. PER BNC COMMENTS

date: 12-30-04  
 scale: 3/8" = 1"  
 dr. by: HAMID  
 chk. by:

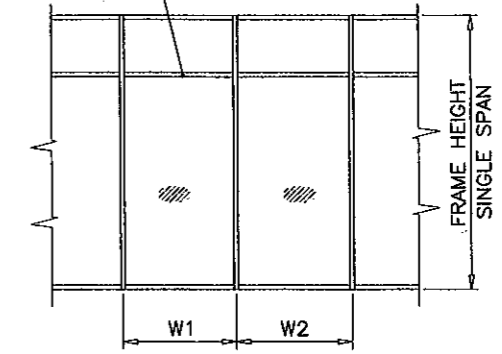
drawing no.  
**W04-105**  
 sheet 4 of 17

ANCHOR LOAD CAPACITY - PSF  
EXT.(+) & INT.(-)

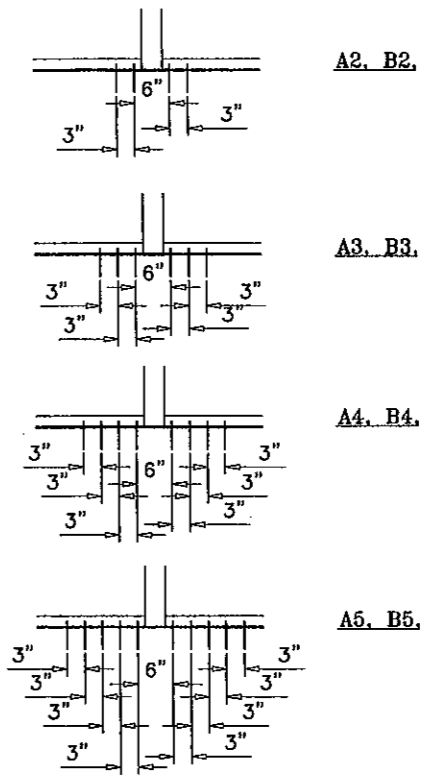
ANCHOR LOAD CAPACITY - PSF  
EXT.(+) & INT.(-)

NOMINAL DIMS.		ANCHORS TYPE 'A'				ANCHORS TYPE 'B'			
WIDTH (W)	FRAME HEIGHT	A2	A3	A4	A5	B2	B3	B4	B5
36"	120"	84.8	127.2	150.3	200.0	96.0	144.0	192.0	200.0
39"		78.3	117.4	138.7	195.7	88.6	132.9	177.2	200.0
42"		72.7	109.0	128.8	181.7	82.3	123.4	164.6	200.0
45"		67.8	101.8	120.2	169.6	76.8	115.2	153.6	192.0
48"		63.6	95.4	112.7	159.0	72.0	108.0	144.0	180.0
51"		59.9	89.8	106.1	149.6	67.8	101.6	135.5	169.4
54"		56.5	84.8	100.2	141.3	64.0	96.0	128.0	160.0
57"		53.6	80.3	94.9	133.9	60.6	90.9	121.3	151.6
60"		50.9	76.3	90.2	127.2	57.6	86.4	115.2	144.0
63"		48.5	72.7	85.9	121.1	54.9	82.3	109.7	137.1
66"		46.3	69.4	82.0	115.6	52.4	78.5	104.7	130.9
69"		44.2	66.4	78.4	110.6	50.1	75.1	100.2	125.2
72"	42.4	63.6	75.1	106.0	48.0	72.0	96.0	120.0	
36"	126"	80.8	121.1	143.1	200.0	91.4	137.1	182.9	200.0
39"		74.5	111.8	132.1	186.4	84.4	126.6	168.8	200.0
42"		69.2	103.8	122.7	173.1	78.4	117.6	156.7	195.9
45"		64.6	96.9	114.5	161.5	73.1	109.7	146.3	182.9
48"		60.6	90.9	107.3	151.4	68.6	102.9	137.1	171.4
51"		57.0	85.5	101.0	142.5	64.5	96.8	129.1	161.3
54"		53.8	80.8	95.4	134.6	61.0	91.4	121.9	152.4
57"		51.0	76.5	90.4	127.5	57.7	86.6	115.5	144.4
60"		48.5	72.7	85.9	121.1	54.9	82.3	109.7	137.1
63"		46.1	69.2	81.8	115.4	52.2	78.4	104.5	130.6
66"		44.1	66.1	78.1	110.1	49.9	74.8	99.7	124.7
69"		42.1	63.2	74.7	105.3	47.7	71.6	95.4	119.3
72"	40.4	60.6	71.6	101.0	45.7	68.6	91.4	114.3	
36"	132"	77.1	115.6	136.6	192.7	87.3	130.9	174.5	200.0
39"		71.2	106.7	126.1	177.9	80.6	120.8	161.1	200.0
42"		66.1	99.1	117.1	165.2	74.8	112.2	149.6	187.0
45"		61.7	92.5	109.3	154.2	69.8	104.7	139.6	174.5
48"		57.8	86.7	102.5	144.5	65.5	98.2	130.9	163.6
51"		54.4	81.6	96.4	136.0	61.6	92.4	123.2	154.0
54"		51.4	77.1	91.1	128.5	58.2	87.3	116.4	145.5
57"		48.7	73.0	86.3	121.7	55.1	82.7	110.2	137.8
60"		46.3	69.4	82.0	115.6	52.4	78.5	104.7	130.9
63"		44.1	66.1	78.1	110.1	49.9	74.8	99.7	124.7
66"		42.0	63.1	74.5	105.1	47.6	71.4	95.2	119.0
69"		40.2	60.3	71.3	100.6	45.5	68.3	91.1	113.8
72"	38.5	57.8	68.3	96.4	43.6	65.5	87.3	109.1	
36"	138"	73.7	110.6	130.7	184.3	83.5	125.2	167.0	200.0
39"		68.1	102.1	120.6	170.2	77.1	115.6	154.1	192.6
42"		63.2	94.8	112.0	158.0	71.6	107.3	143.1	178.9
45"		59.0	88.5	104.5	147.5	66.8	100.2	133.6	167.0
48"		55.3	83.0	98.0	138.3	62.6	93.9	125.2	156.5
51"		52.1	78.1	92.2	130.1	58.9	88.4	117.9	147.3
54"		49.2	73.7	87.1	122.9	55.7	83.5	111.3	139.1
57"		46.6	69.9	82.5	116.4	52.7	79.1	105.4	131.8
60"		44.2	66.4	78.4	110.6	50.1	75.1	100.2	125.2
63"		42.1	63.2	74.7	105.3	47.7	71.6	95.4	119.3
66"		40.2	60.3	71.3	100.6	45.5	68.3	91.1	113.8
69"		38.5	57.7	68.2	96.2	43.6	65.3	87.1	108.9
72"	36.9	55.3	65.3	92.2	41.7	62.6	83.5	104.3	

NOMINAL DIMS.		ANCHORS TYPE 'A'				ANCHORS TYPE 'B'				
WIDTH (W)	FRAME HEIGHT	A2	A3	A4	A5	B2	B3	B4	B5	
36"	144"	70.7	106.0	125.2	176.7	80.0	120.0	160.0	200.0	
39"		65.2	97.8	115.6	163.1	73.8	110.8	147.7	184.6	
42"		60.6	90.9	107.3	151.4	68.6	102.9	137.1	171.4	
45"		56.5	84.8	100.2	141.3	64.0	96.0	128.0	160.0	
48"		53.0	79.5	93.9	132.5	60.0	90.0	120.0	150.0	
51"		49.9	74.8	88.4	124.7	56.5	84.7	112.9	141.2	
54"		47.1	70.7	83.5	117.8	53.3	80.0	106.7	133.3	
57"		44.6	66.9	79.1	111.6	50.5	75.8	101.1	126.3	
60"		42.4	63.6	75.1	106.0	48.0	72.0	96.0	120.0	
63"		40.4	60.6	71.6	101.0	45.7	68.6	91.4	114.3	
66"		38.5	57.8	68.3	96.4	43.6	65.5	87.3	109.1	
69"		36.9	55.3	65.3	92.2	41.7	62.6	83.5	104.3	
36"	150"	67.8	101.8	120.2	169.6	76.8	115.2	153.6	192.0	
39"		62.6	93.9	111.0	156.6	70.9	106.3	141.8	177.2	
42"		58.1	87.2	103.0	145.4	65.8	98.7	131.7	164.6	
45"		54.3	81.4	96.2	135.7	61.4	92.2	122.9	153.6	
48"		50.9	76.3	90.2	127.2	57.6	86.4	115.2	144.0	
51"		47.9	71.8	84.9	119.7	54.2	81.3	108.4	135.5	
54"		45.2	67.8	80.1	113.1	51.2	76.8	102.4	128.0	
57"		42.8	64.3	75.9	107.1	48.5	72.8	97.0	121.3	
60"		40.7	61.1	72.1	101.8	46.1	69.1	92.2	115.2	
63"		38.8	58.1	68.7	96.9	43.9	65.8	87.8	109.7	
66"		37.0	55.5	65.6	92.5	41.9	62.8	83.8	104.7	
36"		156"	65.2	97.8	115.6	163.1	73.8	110.8	147.7	184.6
39"	60.2		90.3	106.7	150.5	68.2	102.2	136.3	170.4	
42"	55.9		83.9	99.1	139.8	63.3	94.9	126.6	158.2	
45"	52.2		78.3	92.5	130.5	59.1	88.6	118.2	147.7	
48"	48.9		73.4	86.7	122.3	55.4	83.1	110.8	138.5	
51"	46.0		69.1	81.6	115.1	52.1	78.2	104.3	130.3	
54"	43.5		65.2	77.1	108.7	49.2	73.8	98.5	123.1	
57"	41.2		61.8	73.0	103.0	46.6	70.0	93.3	116.6	
60"	39.1		58.7	69.4	97.8	44.3	66.5	88.6	110.8	
63"	37.3		55.9	66.1	93.2	42.2	63.3	84.4	105.5	
36"	162"		62.8	94.2	111.3	157.0	71.1	106.7	142.2	177.8
39"			58.0	87.0	102.7	145.0	65.6	98.5	131.3	164.1
42"		53.8	80.8	95.4	134.6	61.0	91.4	121.9	152.4	
45"		50.3	75.4	89.0	125.6	56.9	85.3	113.8	142.2	
48"		47.1	70.7	83.5	117.8	53.3	80.0	106.7	133.3	
51"		44.3	66.5	78.6	110.8	50.2	75.3	100.4	125.5	
54"		41.9	62.8	74.2	104.7	47.4	71.1	94.8	118.5	
57"		39.7	59.5	70.3	99.2	44.9	67.4	89.8	112.3	
60"		37.7	56.5	66.8	94.2	42.7	64.0	85.3	106.7	
36"		168"	60.6	90.9	107.3	151.4	68.6	102.9	137.1	171.4
39"			55.9	83.9	99.1	139.8	63.3	94.9	126.6	158.2
42"			51.9	77.9	92.0	129.8	58.8	88.2	117.6	146.9
45"	48.5		72.7	85.9	121.1	54.9	82.3	109.7	137.1	
48"	45.4		68.1	80.5	113.6	51.4	77.1	102.9	128.6	
51"	42.8		64.1	75.8	106.9	48.4	72.6	96.8	121.0	
54"	40.4		60.6	71.6	101.0	45.7	68.6	91.4	114.3	
57"	38.3		57.4	67.8	95.6	43.3	65.0	86.6	108.3	
60"	36.3		54.5	64.4	90.9	41.1	61.7	82.3	102.9	



$$\text{WIDTH (W)} = \frac{W1 + W2}{2}$$



ANCHORS TYPES A&B: SEE SHEET 9 FOR DESCRIPTION

- A2 = (2) ANCHORS TYPE 'A' AT EACH SIDE OF MULLION
- A3 = (3) ANCHORS TYPE 'A' AT EACH SIDE OF MULLION
- A4 = (4) ANCHORS TYPE 'A' AT EACH SIDE OF MULLION
- A5 = (5) ANCHORS TYPE 'A' AT EACH SIDE OF MULLION
- B2 = (2) ANCHORS TYPE 'B' AT EACH SIDE OF MULLION
- B3 = (3) ANCHORS TYPE 'B' AT EACH SIDE OF MULLION
- B4 = (4) ANCHORS TYPE 'B' AT EACH SIDE OF MULLION
- B5 = (5) ANCHORS TYPE 'B' AT EACH SIDE OF MULLION

ALL OTHER ANCHORS TO BE SPACED AS PER ELEVATION.

Engr: JAVAD AHMAD  
CIVIL  
FLA. PE # 70592  
C.A.N. 3538  
MAY 16 2011

PRODUCT REVISED  
as complying with the Florida  
Building Code  
Acceptance No. 10-1213-08  
Expiration Date 06/30/2011  
By: [Signature]

NO.	DATE	DESCRIPTION
E	08.19.08	NO CHANGE THIS SHEET
F	11.11.10	GENERAL REVISION
G	03.02.11	REV. PER BOCCO COMMENTS
H	05.10.11	NO CHANGE THIS SHEET

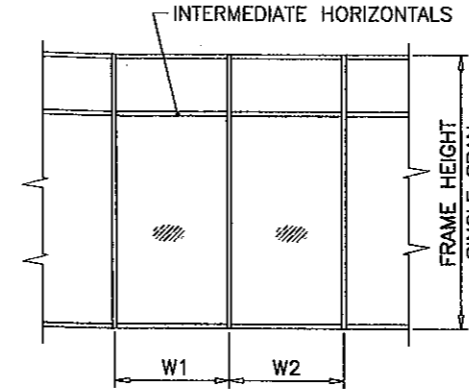
date: 12-30-04  
scale: 3/8" = 1'-0"  
dr. by: HAMID  
chk. by:  
drawing no. W04-105  
sheet 5 of 17

**AL-FAROOQ CORPORATION**  
ENGINEERS & PRODUCT DEVELOPMENT  
1235 S.W. 87 AVE  
MIAMI, FLORIDA 33174  
TEL. (305) 264-8100 FAX. (305) 262-6978  
STORE/WO4-105CTC

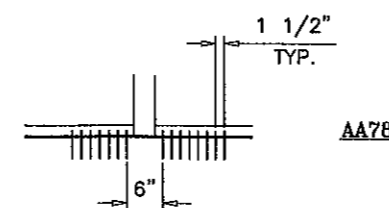
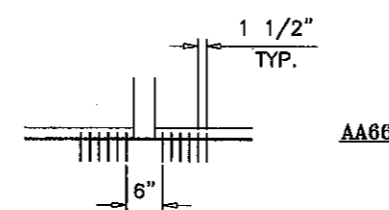
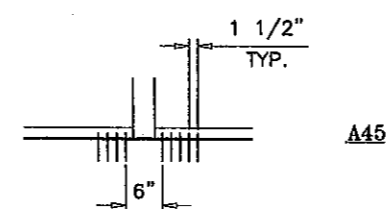
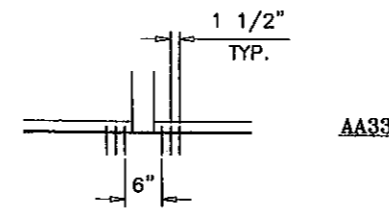
PRO-TECH 75G ALUM CURTAIN WALL SYSTEM (N.I.)  
**CRAWFORD TRACEY CORPORATION**  
3301 SW 13TH DRIVE  
DEERFIELD BEACH, FL. 33442-8101  
TEL. (954) 698-6888 FAX. (954) 698-6889

ANCHOR LOAD CAPACITY - PSF EXT.(+) & INT.(-)					
NOMINAL DIMS.		ANCHORS TYPE 'AA'			
WIDTH (W)	FRAME HEIGHT	AA33	AA45	AA66	AA78
36"	120"	84.8	127.2	150.3	200.0
39"		78.3	117.4	138.7	195.7
42"		72.7	109.0	128.8	181.7
45"		67.8	101.8	120.2	169.6
48"		63.6	95.4	112.7	159.0
51"		59.9	89.8	106.1	149.6
54"		56.5	84.8	100.2	141.3
57"		53.6	80.3	94.9	133.9
60"		50.9	76.3	90.2	127.2
63"		48.5	72.7	85.9	121.1
66"		46.3	69.4	82.0	115.6
69"		44.2	66.4	78.4	110.6
72"	42.4	63.6	75.1	106.0	
36"	126"	80.8	121.1	143.1	200.0
39"		74.5	111.8	132.1	186.4
42"		69.2	103.8	122.7	173.1
45"		64.6	96.9	114.5	161.5
48"		60.6	90.9	107.3	151.4
51"		57.0	85.5	101.0	142.5
54"		53.8	80.8	95.4	134.6
57"		51.0	76.5	90.4	127.5
60"		48.5	72.7	85.9	121.1
63"		46.1	69.2	81.8	115.4
66"		44.1	66.1	78.1	110.1
69"		42.1	63.2	74.7	105.3
72"	40.4	60.6	71.6	101.0	
36"	132"	77.1	115.6	136.6	192.7
39"		71.2	106.7	126.1	177.9
42"		66.1	99.1	117.1	165.2
45"		61.7	92.5	109.3	154.2
48"		57.8	86.7	102.5	144.5
51"		54.4	81.6	96.4	136.0
54"		51.4	77.1	91.1	128.5
57"		48.7	73.0	86.3	121.7
60"		46.3	69.4	82.0	115.6
63"		44.1	66.1	78.1	110.1
66"		42.0	63.1	74.5	105.1
69"		40.2	60.3	71.3	100.6
72"	38.5	57.8	68.3	96.4	
36"	138"	73.7	110.6	130.7	184.3
39"		68.1	102.1	120.6	170.2
42"		63.2	94.8	112.0	158.0
45"		59.0	88.5	104.5	147.5
48"		55.3	83.0	98.0	138.3
51"		52.1	78.1	92.2	130.1
54"		49.2	73.7	87.1	122.9
57"		46.6	69.9	82.5	116.4
60"		44.2	66.4	78.4	110.6
63"		42.1	63.2	74.7	105.3
66"		40.2	60.3	71.3	100.6
69"		38.5	57.7	68.2	96.2
72"	36.9	55.3	65.3	92.2	

ANCHOR LOAD CAPACITY - PSF EXT.(+) & INT.(-)						
NOMINAL DIMS.		ANCHORS TYPE 'AA'				
WIDTH (W)	FRAME HEIGHT	AA33	AA45	AA66	AA78	
36"	144"	70.7	106.0	125.2	176.7	
39"		65.2	97.8	115.6	163.1	
42"		60.6	90.9	107.3	151.4	
45"		56.5	84.8	100.2	141.3	
48"		53.0	79.5	93.9	132.5	
51"		49.9	74.8	88.4	124.7	
54"		47.1	70.7	83.5	117.8	
57"		44.6	66.9	79.1	111.6	
60"		42.4	63.6	75.1	106.0	
63"		40.4	60.6	71.6	101.0	
66"		38.5	57.8	68.3	96.4	
69"		36.9	55.3	65.3	92.2	
36"	150"	67.8	101.8	120.2	169.6	
39"		62.6	93.9	111.0	156.6	
42"		58.1	87.2	103.0	145.4	
45"		54.3	81.4	96.2	135.7	
48"		50.9	76.3	90.2	127.2	
51"		47.9	71.8	84.9	119.7	
54"		45.2	67.8	80.1	113.1	
57"		42.8	64.3	75.9	107.1	
60"		40.7	61.1	72.1	101.8	
63"		38.8	58.1	68.7	96.9	
66"		37.0	55.5	65.6	92.5	
36"		156"	65.2	97.8	115.6	163.1
39"	60.2		90.3	106.7	150.5	
42"	55.9		83.9	99.1	139.8	
45"	52.2		78.3	92.5	130.5	
48"	48.9		73.4	86.7	122.3	
51"	46.0		69.1	81.6	115.1	
54"	43.5		65.2	77.1	108.7	
57"	41.2		61.8	73.0	103.0	
60"	39.1		58.7	69.4	97.8	
63"	37.3		55.9	66.1	93.2	
36"	162"		62.8	94.2	111.3	157.0
39"			58.0	87.0	102.7	145.0
42"		53.8	80.8	95.4	134.6	
45"		50.3	75.4	89.0	125.6	
48"		47.1	70.7	83.5	117.8	
51"		44.3	66.5	78.6	110.8	
54"		41.9	62.8	74.2	104.7	
57"		39.7	59.5	70.3	99.2	
60"		37.7	56.5	66.8	94.2	
36"		168"	60.6	90.9	107.3	151.4
39"			55.9	83.9	99.1	139.8
42"			51.9	77.9	92.0	129.8
45"	48.5		72.7	85.9	121.1	
48"	45.4		68.1	80.5	113.6	
51"	42.8		64.1	75.8	106.9	
54"	40.4		60.6	71.6	101.0	
57"	38.3		57.4	67.8	95.6	
60"	36.3		54.5	64.4	90.9	



$$\text{WIDTH (W)} = \frac{W1 + W2}{2}$$



ANCHORS TYPES AA (INTO 2BY BUCKS); SEE SHEET 9 FOR DESCRIPTION

- AA33= (6) ANCHORS TYPE 'AA' AT MULLION ENDS
- AA45= (9) ANCHORS TYPE 'AA' AT MULLION ENDS
- AA66= (12) ANCHORS TYPE 'AA' AT MULLION ENDS
- AA78= (15) ANCHORS TYPE 'AA' AT MULLION ENDS

ALL OTHER ANCHORS TO BE SPACED AS PER ELEVATION.

Engr: JAVAD AHMAD  
CIVIL  
FLA. PE # 70592  
C.A.N. 3538  
  
MAY 16 2011

PRODUCT REVISED  
to comply with the Florida  
Building Code  
Acceptance No 10-1213-03  
Expiration Date SEP 16, 2016  
By Ishaq J. Chande  
Manual Date Product Control

**afc**

**AL-FAROOQ CORPORATION**  
ENGINEERS & PRODUCT DEVELOPMENT  
1235 S.W. 87 AVE  
MIAMI, FLORIDA 33174  
TEL (305) 264-8100 FAX (305) 262-6978  
STORE/W04-105CTC

---

PRO-TECH 7SG ALUM CURTAIN WALL SYSTEM (N.I.)

**CRAWFORD TRACEY CORPORATION**  
3301 SW 13TH DRIVE  
DEERFIELD BEACH, FL. 33442-8101  
TEL. (954) 698-6888 FAX. (954) 698-6889

---

no.	date	by	description
E	08.19.06		REV. PER BCCO COMMENTS
F	11.11.10		GENERAL REVISION
G	03.02.11		REV. PER BCCO COMMENTS
H	05.10.11		NO CHANGE THIS SHEET

---

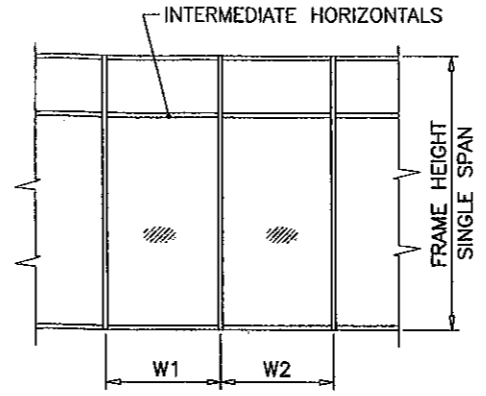
date: 12-30-04  
scale: 3/8"=1'-0"  
dr. by: HAMID  
chk. by:

---

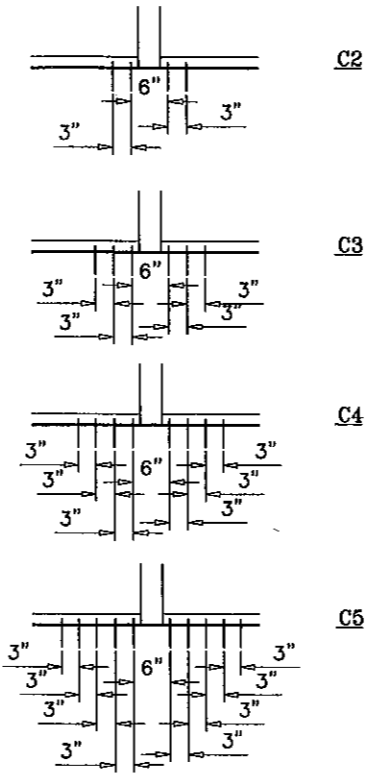
drawing no.  
**W04-105**  
sheet 5.1 of 17

ANCHOR LOAD CAPACITY - PSF EXT.(+) & INT.(-)					
NOMINAL DIMS.		ANCHORS TYPE 'C'			
WIDTH (W)	FRAME HEIGHT	C2	C3	C4	C5
36"	120"	133.3	200.0	200.0	200.0
39"		123.1	184.6	200.0	200.0
42"		114.3	171.4	200.0	200.0
45"		106.7	160.0	200.0	200.0
48"		100.0	150.0	200.0	200.0
51"		94.1	141.2	188.2	200.0
54"		88.9	133.3	177.8	200.0
57"		84.2	126.3	168.4	200.0
60"		80.0	120.0	160.0	200.0
63"		76.2	114.3	152.4	190.5
66"		72.7	109.1	145.5	181.8
69"		69.6	104.3	139.1	173.9
72"	66.7	100.0	133.3	166.7	
36"	126"	127.0	190.5	200.0	200.0
39"		117.2	175.8	200.0	200.0
42"		108.8	163.3	200.0	200.0
45"		101.6	152.4	200.0	200.0
48"		95.2	142.9	190.5	200.0
51"		89.6	134.5	179.3	200.0
54"		84.7	127.0	169.3	200.0
57"		80.2	120.3	160.4	200.0
60"		76.2	114.3	152.4	190.5
63"		72.6	108.8	145.1	181.4
66"		69.3	103.9	138.5	173.2
69"		66.3	99.4	132.5	165.6
72"	63.5	95.2	127.0	158.7	
36"	132"	121.2	181.8	200.0	200.0
39"		111.9	167.8	200.0	200.0
42"		103.9	155.8	200.0	200.0
45"		97.0	145.5	193.9	200.0
48"		90.9	136.4	181.8	200.0
51"		85.6	128.3	171.1	200.0
54"		80.8	121.2	161.6	200.0
57"		76.6	114.8	153.1	191.4
60"		72.7	109.1	145.5	181.8
63"		69.3	103.9	138.5	173.2
66"		66.1	99.2	132.2	165.3
69"		63.2	94.9	126.5	158.1
72"	60.6	90.9	121.2	151.5	
36"	138"	115.9	173.9	200.0	200.0
39"		107.0	160.5	200.0	200.0
42"		99.4	149.1	198.8	200.0
45"		92.8	139.1	185.5	200.0
48"		87.0	130.4	173.9	200.0
51"		81.8	122.8	163.7	200.0
54"		77.3	115.9	154.6	193.2
57"		73.2	109.8	146.5	183.1
60"		69.6	104.3	139.1	173.9
63"		66.3	99.4	132.5	165.6
66"		63.2	94.9	126.5	158.1
69"		60.5	90.7	121.0	151.2
72"	58.0	87.0	115.9	144.9	

ANCHOR LOAD CAPACITY - PSF EXT.(+) & INT.(-)						
NOMINAL DIMS.		ANCHORS TYPE 'C'				
WIDTH (W)	FRAME HEIGHT	C2	C3	C4	C5	
36"	144"	111.1	166.7	200.0	200.0	
39"		102.6	153.8	200.0	200.0	
42"		95.2	142.9	190.5	200.0	
45"		88.9	133.3	177.8	200.0	
48"		83.3	125.0	166.7	200.0	
51"		78.4	117.6	156.9	196.1	
54"		74.1	111.1	148.1	185.2	
57"		70.2	105.3	140.4	175.4	
60"		66.7	100.0	133.3	166.7	
63"		63.5	95.2	127.0	158.7	
66"		60.6	90.9	121.2	151.5	
69"		58.0	87.0	115.9	144.9	
36"	150"	106.7	160.0	200.0	200.0	
39"		98.5	147.7	196.9	200.0	
42"		91.4	137.1	182.9	200.0	
45"		85.3	128.0	170.7	200.0	
48"		80.0	120.0	160.0	200.0	
51"		75.3	112.9	150.6	188.2	
54"		71.1	106.7	142.2	177.8	
57"		67.4	101.1	134.7	168.4	
60"		64.0	96.0	128.0	160.0	
63"		61.0	91.4	121.9	152.4	
66"		58.2	87.3	116.4	145.5	
36"		156"	102.6	153.8	200.0	200.0
39"	94.7		142.0	189.3	200.0	
42"	87.9		131.9	175.8	200.0	
45"	82.1		123.1	164.1	200.0	
48"	76.9		115.4	153.8	192.3	
51"	72.4		108.6	144.8	181.0	
54"	68.4		102.6	136.8	170.9	
57"	64.8		97.2	129.6	161.9	
60"	61.5		92.3	123.1	153.8	
63"	58.6		87.9	117.2	146.5	
36"	162"		96.8	148.1	197.5	200.0
39"			91.2	136.8	182.3	200.0
42"		84.7	127.0	169.3	200.0	
45"		79.0	118.5	158.0	197.5	
48"		74.1	111.1	148.1	185.2	
51"		69.7	104.6	139.4	174.3	
54"		65.8	98.8	131.7	164.6	
57"		62.4	93.6	124.8	155.9	
60"		59.3	88.9	118.5	148.1	
36"		168"	95.2	142.9	190.5	200.0
39"			87.9	131.9	175.8	200.0
42"			81.6	122.4	163.3	200.0
45"	76.2		114.3	152.4	190.5	
48"	71.4		107.1	142.9	178.6	
51"	67.2		100.8	134.5	168.1	
54"	63.5		95.2	127.0	158.7	
57"	60.2		90.2	120.3	150.4	
60"	57.1		85.7	114.3	142.9	



$$\text{WIDTH (W)} = \frac{W1 + W2}{2}$$



ANCHORS TYPES C (INTO METAL STRUCTURES); SEE SHEET 9 FOR DESCRIPTION

- C2 = (2) ANCHORS TYPE 'C' AT EACH SIDE OF MULLION
- C3 = (3) ANCHORS TYPE 'C' AT EACH SIDE OF MULLION
- C4 = (4) ANCHORS TYPE 'C' AT EACH SIDE OF MULLION
- C5 = (5) ANCHORS TYPE 'C' AT EACH SIDE OF MULLION

ALL OTHER ANCHORS TO BE SPACED AS PER ELEVATION.

Engr: JAVAD AHMAD  
CIVIL  
FLA. PE # 70592  
C.A.N. 3538

*J.A.*  
MAY 16 2011

PRODUCT REVISED  
to comply with the Florida  
Building Code  
Acceptance No. 10-1213-08  
Expiration Date 06/14/2016  
*Ishak I. Chande*  
Product Engineer

**af**

**AL-FAROOQ CORPORATION**  
ENGINEERS & PRODUCT DEVELOPMENT  
1235 S.W. 87 AVE  
MIAMI, FLORIDA 33174  
TEL. (305) 264-8100 FAX. (305) 262-6978  
STORE \W04-105CTC

---

PRO-TECH 75G ALUM CURTAIN WALL SYSTEM (N.I.)

**CRAWFORD TRACEY CORPORATION**  
3301 SW 13TH DRIVE  
DEERFIELD BEACH, FL. 33442-8101  
TEL. (954) 698-6888 FAX. (954) 698-6889

---

no.	date	description
E	08.19.08	NO CHANGE THIS SHEET
F	11.11.10	GENERAL REVISION
G	03.02.11	REV. PER BOCCO COMMENTS
H	05.10.11	NO CHANGE THIS SHEET

---

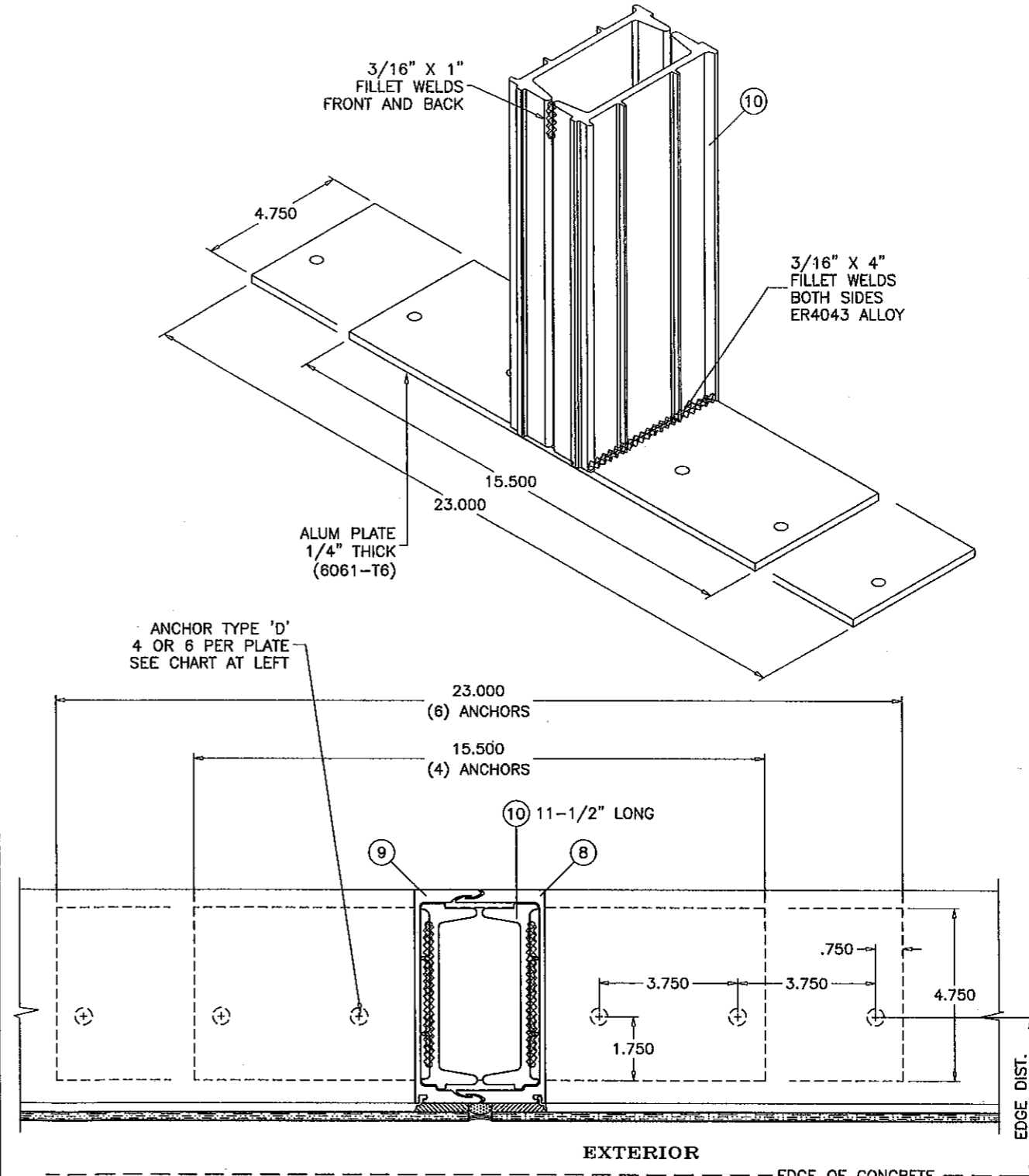
date: 12-30-04  
scale: 3/8"=1'-0"  
dr. by: HAMID  
chk. by:

---

drawing no.  
**W04-105**  
sheet 6 of 17

ANCHOR LOAD CAPACITY - PSF EXT.(+) & INT.(-)					
NOMINAL DIMS.		4 ANCHORS PER PLATE TYPE 'D'		6 ANCHORS PER PLATE TYPE 'D'	
WIDTH (W)	FRAME HEIGHT	2-1/4" EDGE DIST.	3-1/4" EDGE DIST.	2-1/4" EDGE DIST.	3-1/4" EDGE DIST.
36"	120"	108.7	171.8	163.0	200.0
39"		100.3	158.6	150.5	200.0
42"		93.1	147.3	139.7	200.0
45"		86.9	137.4	130.4	200.0
48"		81.5	128.9	122.3	193.3
51"		76.7	121.3	115.1	181.9
54"		72.4	114.5	108.7	171.8
57"		68.6	108.5	102.9	162.8
60"		65.2	103.1	97.8	154.6
63"		62.1	98.2	93.1	147.3
66"		59.3	93.7	88.9	140.6
69"		56.7	89.6	85.0	134.5
72"	54.3	85.9	81.5	128.9	
36"	126"	103.5	163.6	155.2	200.0
39"		95.5	151.0	143.3	200.0
42"		88.7	140.2	133.1	200.0
45"		82.8	130.9	124.2	196.4
48"		77.6	122.7	116.4	184.1
51"		73.1	115.5	109.6	173.3
54"		69.0	109.1	103.5	163.6
57"		65.4	103.3	98.0	155.0
60"		62.1	98.2	93.1	147.3
63"		59.1	93.5	88.7	140.3
66"		56.5	89.2	84.7	133.9
69"		54.0	85.4	81.0	128.1
72"	51.7	81.8	77.6	122.7	
36"	132"	98.8	156.2	148.2	200.0
39"		91.2	144.2	136.8	200.0
42"		84.7	133.9	127.0	200.0
45"		79.0	124.9	118.5	187.4
48"		74.1	117.1	111.1	175.7
51"		69.7	110.2	104.6	165.4
54"		65.9	104.1	98.8	156.2
57"		62.4	98.6	93.6	148.0
60"		59.3	93.7	88.9	140.6
63"		56.5	89.2	84.7	133.9
66"		53.9	85.2	80.8	127.8
69"		51.5	81.5	77.3	122.2
72"	49.4	78.1	74.1	117.2	
36"	138"	94.5	149.4	141.7	200.0
39"		87.2	137.9	130.8	200.0
42"		81.0	128.0	121.5	192.1
45"		75.6	119.5	113.4	179.3
48"		70.9	112.0	106.3	168.1
51"		66.7	105.5	100.1	158.2
54"		63.0	99.6	94.5	149.4
57"		59.7	94.4	89.5	141.5
60"		56.7	89.6	85.0	134.5
63"		54.0	85.4	81.0	128.1
66"		51.5	81.5	77.3	122.2
69"		49.3	77.9	74.0	116.9
72"	47.2	74.7	70.9	112.1	

ANCHOR LOAD CAPACITY - PSF EXT.(+) & INT.(-)						
NOMINAL DIMS.		4 ANCHORS PER PLATE TYPE 'D'		6 ANCHORS PER PLATE TYPE 'D'		
WIDTH (W)	FRAME HEIGHT	2-1/4" EDGE DIST.	3-1/4" EDGE DIST.	2-1/4" EDGE DIST.	3-1/4" EDGE DIST.	
36"	144"	90.6	143.2	135.8	200.0	
39"		83.6	132.2	125.4	198.3	
42"		77.6	122.7	116.4	184.1	
45"		72.4	114.5	108.7	171.8	
48"		67.9	107.4	101.9	161.1	
51"		63.9	101.1	95.9	151.6	
54"		60.4	95.4	90.6	143.2	
57"		57.2	90.4	85.8	135.6	
60"		54.3	85.9	81.5	128.9	
63"		51.7	81.8	77.6	122.7	
66"		49.4	78.1	74.1	117.2	
69"		47.2	74.7	70.9	112.1	
36"	150"	86.9	137.4	130.4	200.0	
39"		80.2	126.9	120.4	190.3	
42"		74.5	117.8	111.8	176.7	
45"		69.5	110.0	104.3	164.9	
48"		65.2	103.1	97.8	154.6	
51"		61.4	97.0	92.0	145.5	
54"		58.0	91.6	86.9	137.5	
57"		54.9	86.8	82.4	130.2	
60"		52.2	82.5	78.2	123.7	
63"		49.7	78.5	74.5	117.8	
66"		47.4	75.0	71.1	112.5	
36"		156"	83.6	132.2	125.4	198.3
39"	77.2		122.0	115.7	183.0	
42"	71.6		113.3	107.5	169.9	
45"	66.9		105.7	100.3	158.6	
48"	62.7		99.1	94.0	148.7	
51"	59.0		93.3	88.5	139.9	
54"	55.7		88.1	83.6	132.2	
57"	52.8		83.5	79.2	125.2	
60"	50.2		79.3	75.2	119.0	
63"	47.8		75.5	71.6	113.3	
36"	162"		80.5	127.3	120.7	190.9
39"			74.3	117.5	111.5	176.2
42"		69.0	109.1	103.5	163.6	
45"		64.4	101.8	96.6	152.7	
48"		60.4	95.4	90.6	143.2	
51"		56.8	89.8	85.2	134.8	
54"		53.7	84.8	80.5	127.3	
57"		50.8	80.4	76.3	120.6	
60"		48.3	76.4	72.4	114.5	
36"		168"	77.6	122.7	116.4	184.1
39"			71.6	113.3	107.5	169.9
42"			66.5	105.2	99.8	157.8
45"	62.1		98.2	93.1	147.3	
48"	58.2		92.0	87.3	138.1	
51"	54.8		86.6	82.2	129.9	
54"	51.7		81.8	77.6	122.7	
57"	49.0		77.5	73.5	116.3	
60"	46.6		73.6	69.9	110.5	



**TYPICAL ANCHORS:**  
 TYPE 'D' - 3/8" DIA. WEDGE-BOLT ANCHOR BY 'POWER FASTENERS'  
 DIRECTLY INTO CONCRETE  
 1-1/2" MIN. EMBED INTO CONC. (3000 PSI MIN.)  
 EDGE DIST. (SEE CHARTS ABOVE)

**PRODUCT REVIEWED**  
 as complying with the Florida  
 Building Code  
 Acceptance No. 10-1213.08  
 Expiration Date SEP 14, 2016  
 By: *Isham J. Khan*  
 Miami Dade Product Control

Engr: JAVAD AHMAD  
 CIVIL  
 FLA. PE # 70592  
 C.A.N. 3538  
*J.A.*  
 MAY 16 2011

**afC**  
**AL-FAROOQ CORPORATION**  
 ENGINEERS & PRODUCT DEVELOPMENT  
 1235 S.W. 87 AVE  
 MIAMI, FLORIDA 33174  
 TEL. (305) 264-8100 FAX. (305) 262-6978  
 STORE W04-105CTC

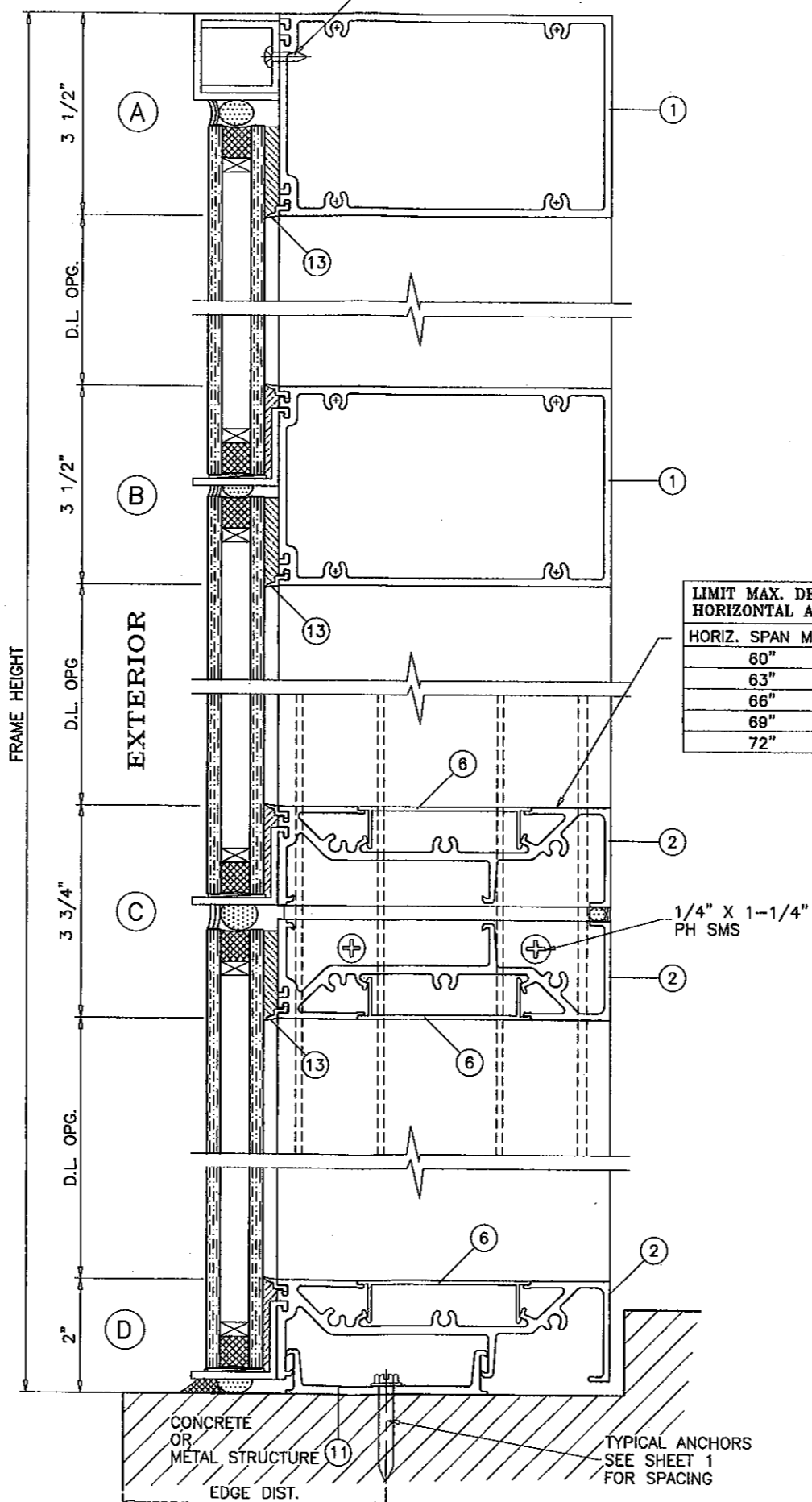
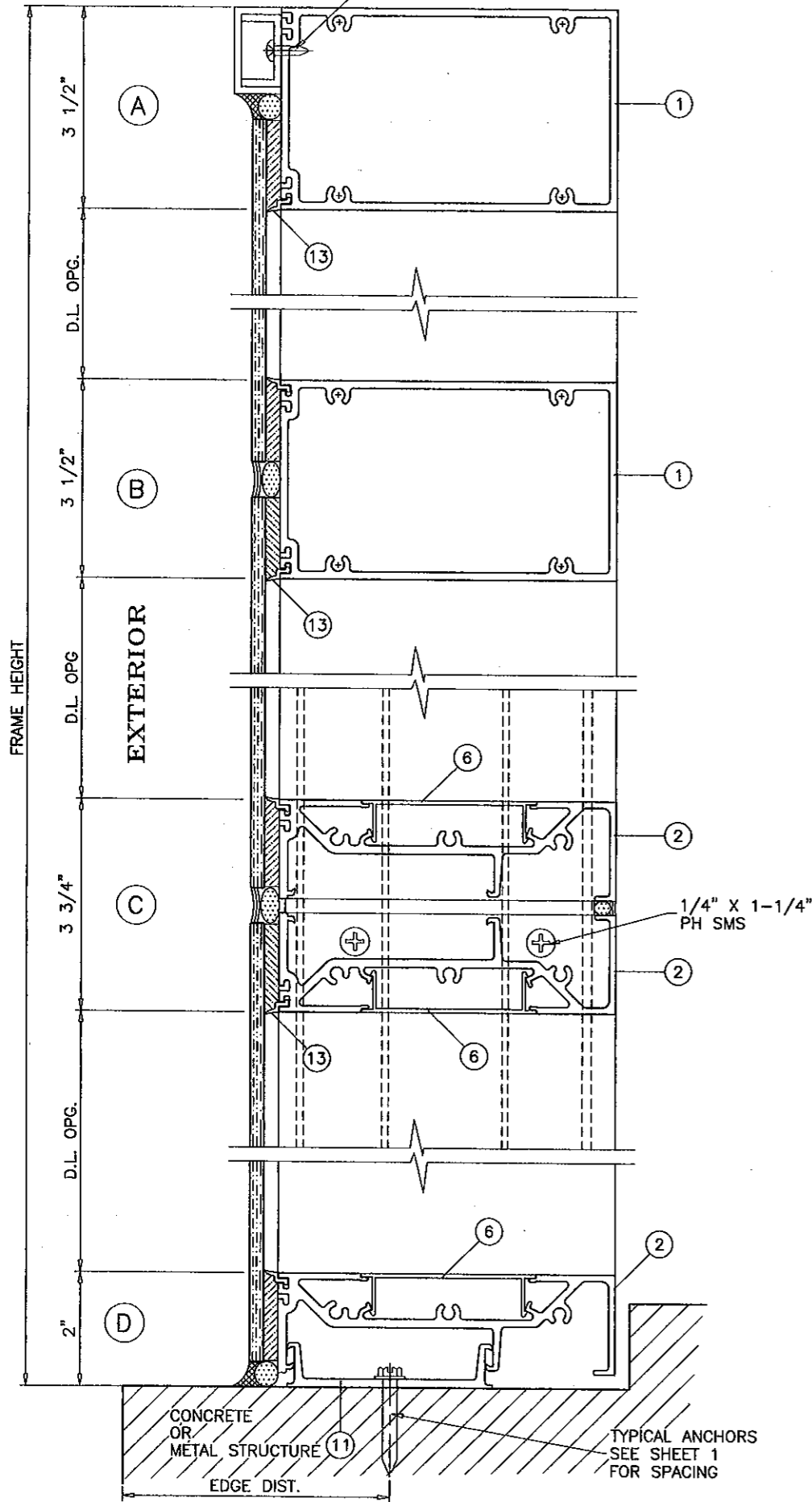
---

PRO-TECH 75C ALUM CURTAIN WALL SYSTEM (N.I.)  
**CRAWFORD TRACEY CORPORATION**  
 3301 SW 13TH DRIVE  
 DEERFIELD BEACH, FL. 33442-8101  
 TEL. (954) 698-6888 FAX. (954) 698-6889

no	date	description
E	08.19.08	NO CHANGE THIS SHEET
F	11.11.10	GENERAL REVISION
G	03.02.11	REV. PER BCCO COMMENTS
H	05.10.11	NO CHANGE THIS SHEET

date: 12-30-04  
 scale: 1/4" = 1"  
 dr. by: HAMID  
 chk. by:

drawing no.  
**W04-105**  
 sheet 7 of 17



**LIMIT MAX. DESIGN LOADS FOR THIS HORIZONTAL AS FOLLOWS**

HORIZ. SPAN MAX.	DESIGN LOADS
80"	200 PSF
63"	150 PSF
66"	115 PSF
69"	89 PSF
72"	70 PSF

**PRODUCT REVISED**  
 as complying with the Florida  
 Building Code  
 Amendment No. 10-1213-05  
 Supersession Date: 5/14/2016  
 By: *Chas. I. Chanda*  
 Mutual Duty Product Control

Engr: JAVAD AHMAD  
 CIVIL  
 FLA. PE # 70592  
 C.A.N. 3538  
*MAJ 16 2011*

**afcc**  
**AL-FAROOQ CORPORATION**  
 ENGINEERS & PRODUCT DEVELOPMENT  
 1235 S.W. 87 AVE  
 MIAMI, FLORIDA 33174  
 TEL. (305) 264-8100 FAX. (305) 262-6978  
 STORE \W04-105CTC

---

PRO-TECH 7SG ALUM CURTAIN WALL SYSTEM (N.I.)  
**CRAWFORD TRACEY CORPORATION**  
 3301 SW 13TH DRIVE  
 DEERFIELD BEACH, FL. 33442-8101  
 TEL. (954) 698-6888 FAX. (954) 698-6889

---

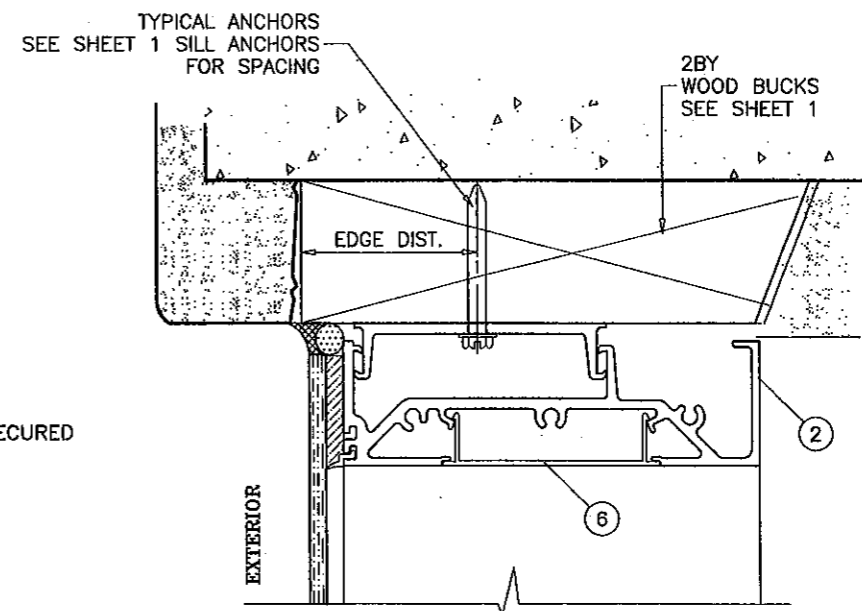
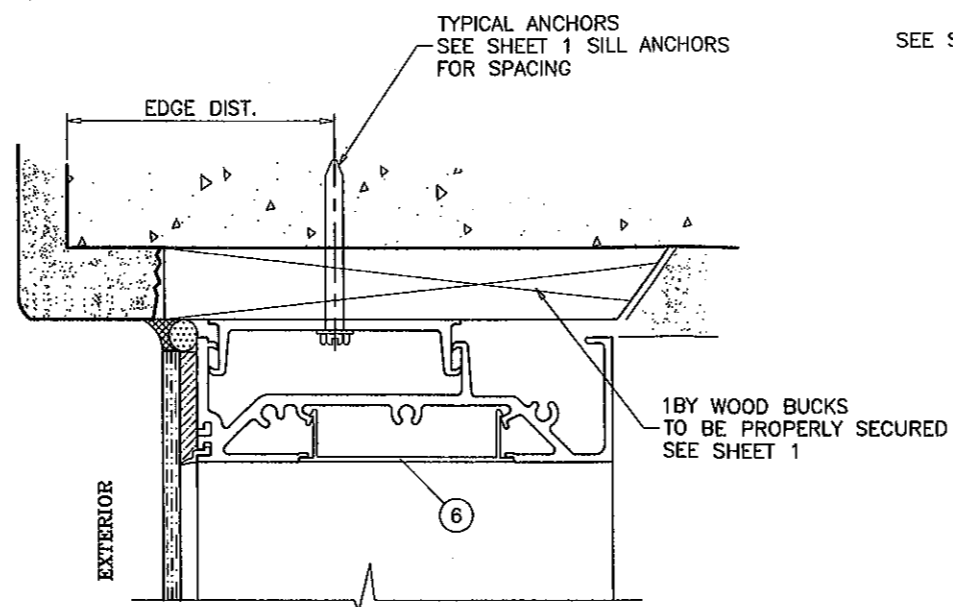
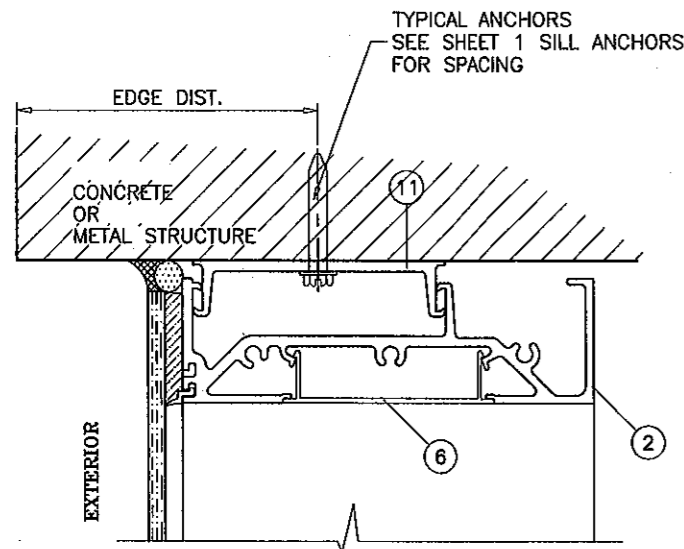
no.	date	by	description
E	08.19.08		REV. PER BCCO COMMENTS
F	11.11.10		GENERAL REVISION
G	03.02.11		REV. PER BCCO COMMENTS
H	05.10.11		NO CHANGE THIS SHEET

---

date: 12-30-04  
 scale: 3/8" = 1"  
 dr. by: HAMID  
 chk. by:

---

drawing no.  
**W04-105**  
 sheet 8 of 17



WOOD/METAL STRUCTURES NOT BY CRAWFORD TRACEY, MUST SUPPORT LOADS IMPOSED BY GLAZING SYSTEM AND TRANSFER THEM TO THE BUILDING STRUCTURE.

**TYPICAL ANCHORS:** SEE ELEV. FOR SPACING

TYPE 'AA' - 5/16" DIA. ULTRACON BY 'ELCO' (Fu=177 KSI, Fy=155 KSI)  
 INTO 2BY WOOD BUCKS OR WOOD STRUCTURES  
 1-3/8" MIN. PENETRATION INTO WOOD

TYPE 'A' - 5/16" DIA. ULTRACON BY 'ELCO' (Fu=177 KSI, Fy=155 KSI)  
 THRU 1BY BUCKS INTO CONC. OR MASONRY  
 1-1/4" MIN. EMBED INTO CONC. OR MASONRY

TYPE 'B' - 1/4" DIA. ULTRACON BY 'ELCO' (Fu=177 KSI, Fy=155 KSI)  
 DIRECTLY INTO CONC. OR MASONRY  
 1-1/4" MIN. EMBED INTO CONC. OR MASONRY

TYPE 'C' - 1/4" DIA TEKS OR SELF DRILLING SCREWS (GRADE 5 CRS)  
 INTO METAL STRUCTURES (MIN. 1/8" EMBED INTO SUBSTRATE)  
 STEEL : 1/8" THK. MIN. (Fy = 36 KSI MIN.)  
 ALUMINUM : 1/8" THK. MIN. (6063-T5 MIN.)  
 (STEEL IN CONTACT WITH ALUMINUM TO BE PLATED OR PAINTED)

**TYPICAL EDGE DISTANCE**

INTO CONCRETE AND MASONRY = 2-1/2" MIN.  
 INTO WOOD STRUCTURE = 1-1/4" MIN.  
 INTO METAL STRUCTURE = 3/4" MIN.

CONCRETE AT HEAD, SILL OR JAMBS f'c = 3000 PSI MIN. (EXCEPT AS NOTED)  
 C-90 HOLLOW/FILLED BLOCK AT JAMBS f'm = 2000 PSI MIN.

TYPE 'D' - 3/8" WEDGE BOLTS BY 'POWER FASTENERS' (SEE SHEET 7)

Engr: JAVAD AHMAD  
 CIVIL  
 FLA. PE # 70592  
 C.A.N. 3538  
 MAY 16 2011

PRODUCT REVISED  
 as complying with the Florida  
 Building Code  
 Acceptance No 10-1213.08  
 Expiration Date SEP 14, 2016  
 By Ishaq I. Chaudhry  
 National Product Control

**af c**  
**AL-FAROOQ CORPORATION**  
 ENGINEERS & PRODUCT DEVELOPMENT  
 1235 S.W. 87 AVE  
 MIAMI, FLORIDA 33174  
 TEL (305) 264-8100 FAX (305) 262-6978  
 STORE/W04-105CTC

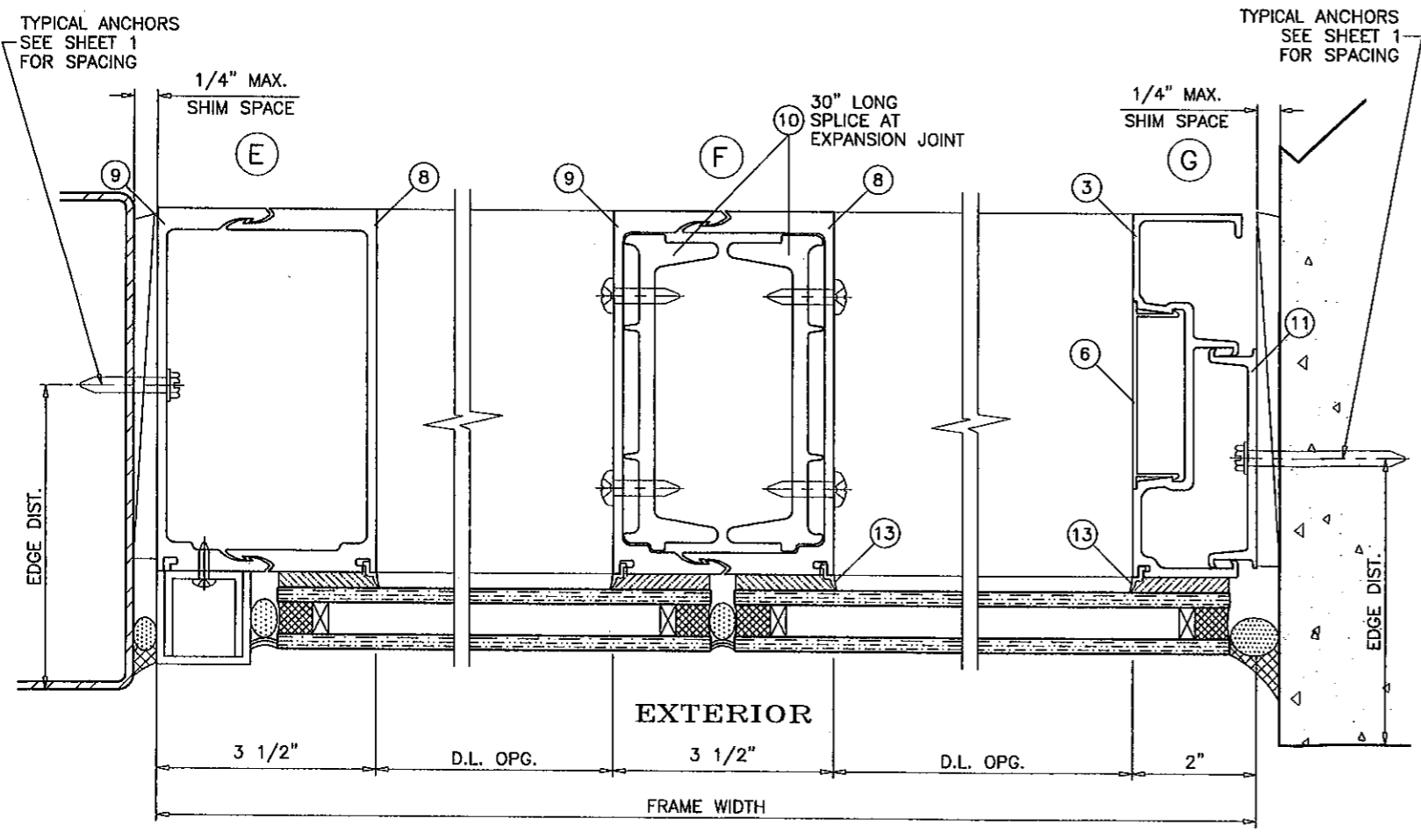
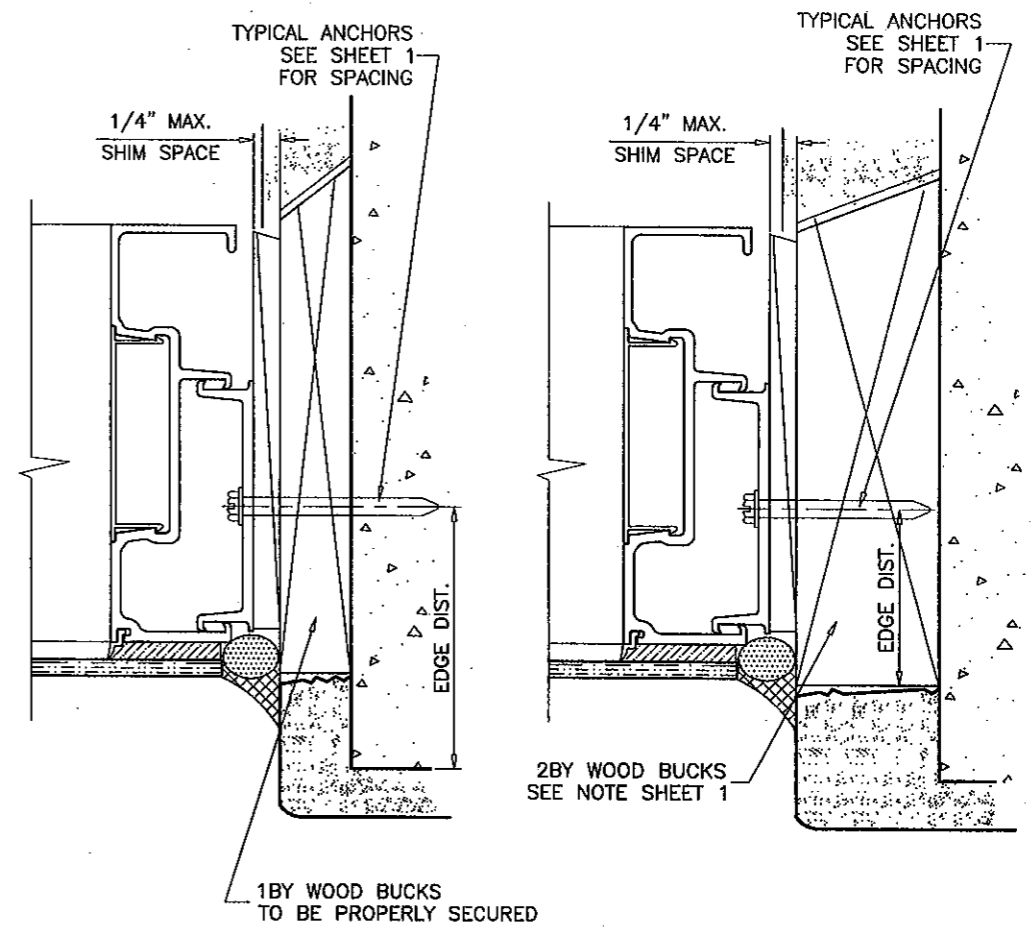
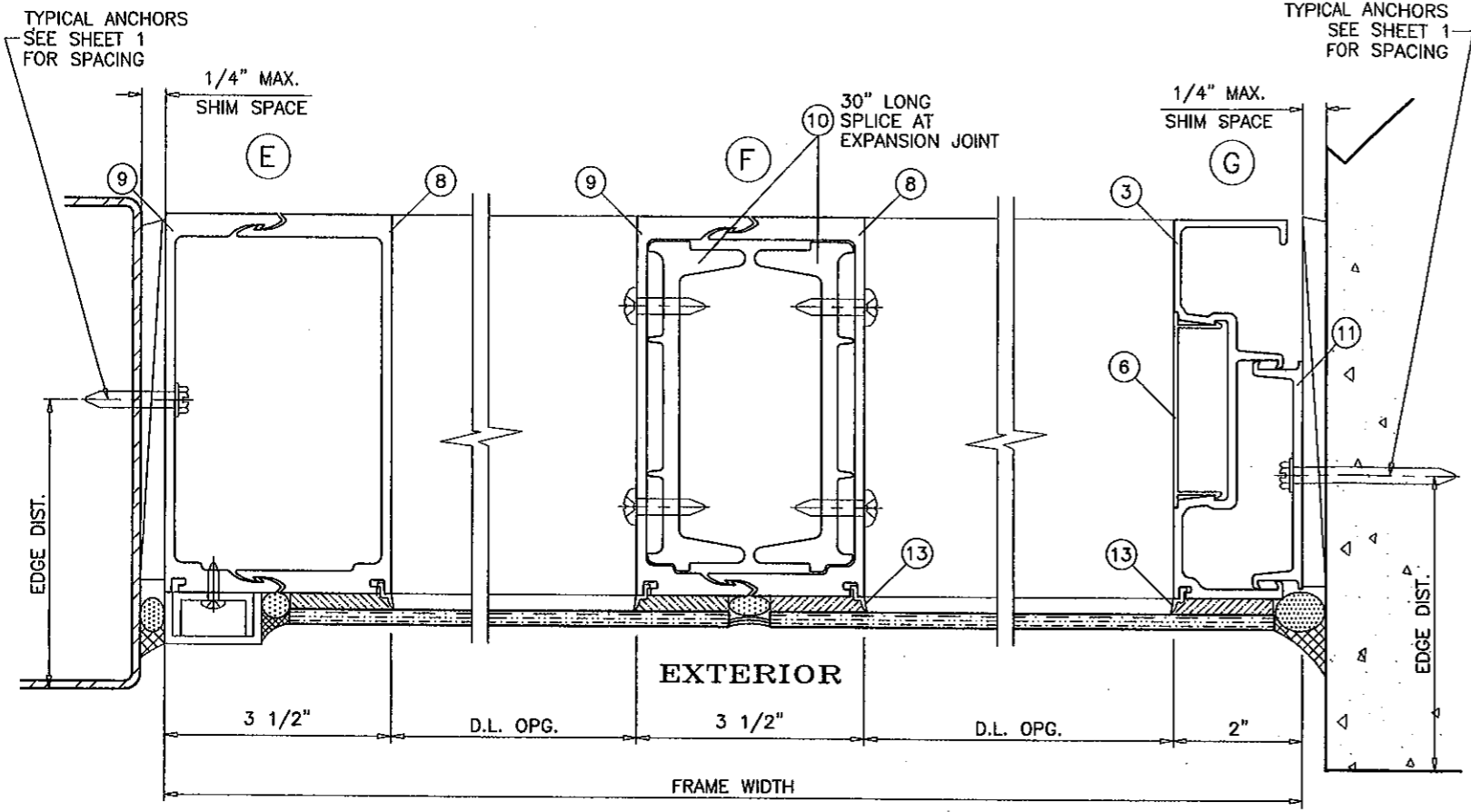
---

PRO-TECH 7SG ALUM CURTAIN WALL SYSTEM (N.I.)  
**CRAWFORD TRACEY CORPORATION**  
 3301 SW 13TH DRIVE  
 DEERFIELD BEACH, FL. 33442-8101  
 TEL (954) 698-6888 FAX (954) 698-6889

revisions:	no	date	by	description
	E	08.19.08		REV. PER BCCO COMMENTS
	F	11.11.10		GENERAL REVISION
	G	03.02.11		REV. PER BCCO COMMENTS
	H	05.10.11		NO CHANGE THIS SHEET

date: 12-30-04  
 scale: 3/8" = 1"  
 dr. by: HAMID  
 chk. by:

drawing no.  
**W04-105**  
 sheet 9 of 17



**PRODUCT REVISED**  
 as complying with the Florida  
 Building Code  
 Acceptance No. 10-1213-08  
 Expiration Date SEP 14, 2016  
 by Ishaq I. Chaudhry  
 Internal Date Product Control

Engr: JAVAD AHMAD  
 CIVIL  
 FLA. PE # 70592  
 C.A.N. 3538  
 MAY 16 2011

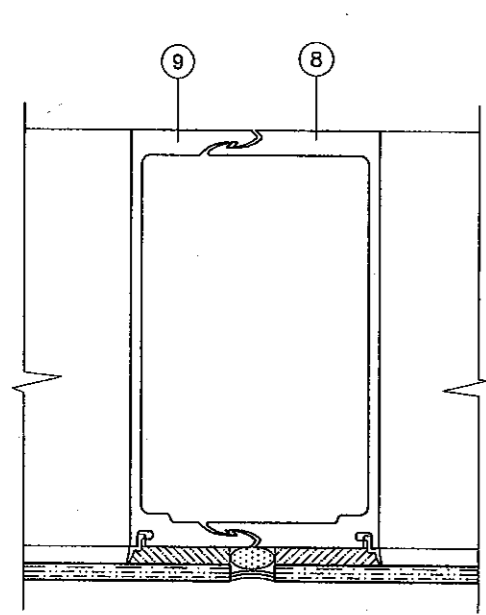
**afcc**  
**AL-FAROOQ CORPORATION**  
 ENGINEERS & PRODUCT DEVELOPMENT  
 1235 S.W. 87 AVE  
 MIAMI, FLORIDA 33174  
 TEL. (305) 264-8100 FAX. (305) 262-6975  
 STORE W04-105CTC

PRO-TECH 7SG ALUM CURTAIN WALL SYSTEM (N.I.)  
**CRAWFORD TRACEY CORPORATION**  
 3301 SW 13TH DRIVE  
 DEERFIELD BEACH, FL. 33442-8101  
 TEL. (954) 698-6888 FAX. (954) 698-6889

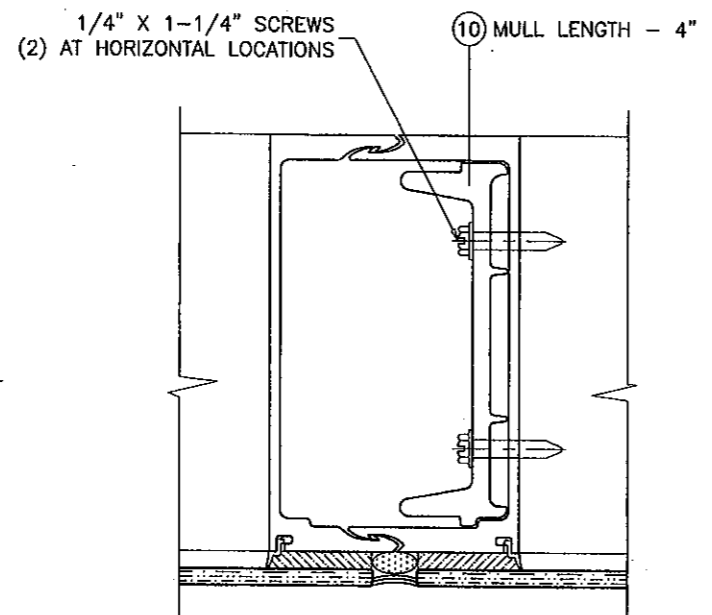
NO	DATE	BY	DESCRIPTION
E	08.19.08	REV. PER BCCO COMMENTS	
F	11.11.10	GENERAL REVISION	
G	03.02.11	REV. PER BCCO COMMENTS	
H	05.10.11	REV. PER BNC COMMENTS	

date: 12-30-04  
 scale: 3/8" = 1"  
 dr. by: HAMID  
 chk. by:

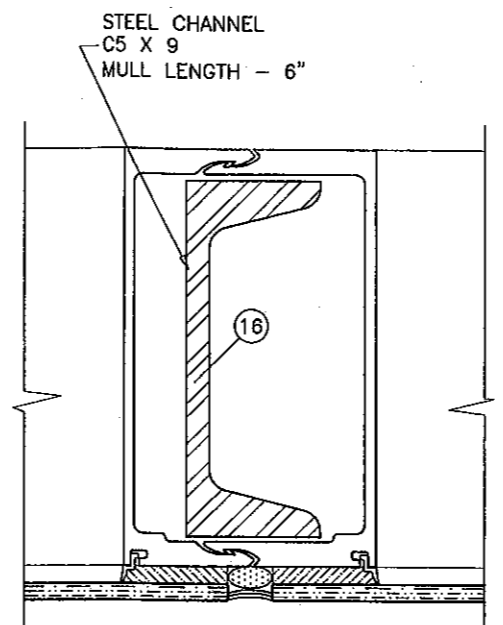
drawing no.  
**W04-105**  
 sheet 10 of 17



MULLION  
UNREINFORCED



MULLION  
ALUM REINFORCING



MULLION  
STEEL REINFORCING

EXTERIOR

**PRODUCT REVIEWED**  
 as complying with the Florida  
 Building Code  
 Acceptance No. 10-1213-08  
 Expiration Date 08/14/2016  
 By: *Ishag I. Chande*  
 Project Data/Product Control

Engr: JAVAD AHMAD  
 CIVIL  
 FLA. PE # 70592  
 C.A.N. 3538  
*J.A.*  
 MAY 16 2011

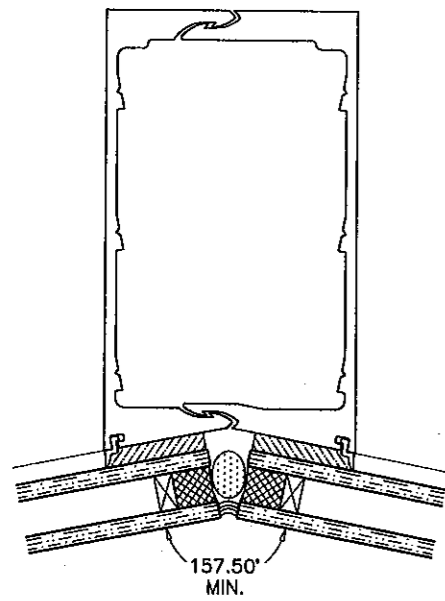
**af c**  
**AL-FAROOQ CORPORATION**  
 ENGINEERS & PRODUCT DEVELOPMENT  
 1235 S.W. 87 AVE  
 MIAMI, FLORIDA 33174  
 TEL. (305) 264-8100 FAX. (305) 262-6978  
 STORE W04-105CTC

PRO-TECH 75G ALUM CURTAIN WALL SYSTEM (N.I.)  
**CRAWFORD TRACEY CORPORATION**  
 3301 SW 13TH DRIVE  
 DEERFIELD BEACH, FL. 33442-8101  
 TEL. (954) 698-6888 FAX. (954) 698-6889

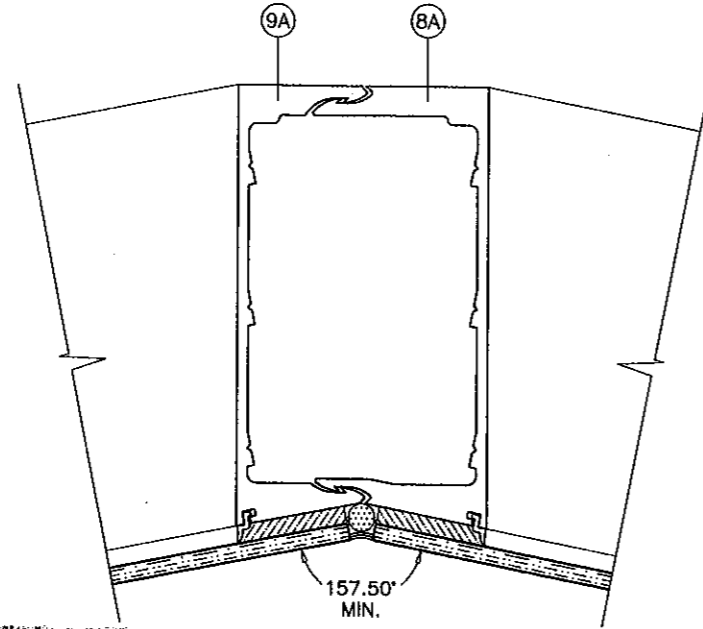
no	date	by	description
E	08.19.08		NO CHANGE THIS SHEET
F	11.11.10		GENERAL REVISION
G	03.02.11		REV. PER BOCO COMMENTS
H	05.10.11		NO CHANGE THIS SHEET

date: 12-30-04  
 scale: 3/8" = 1"  
 dr. by: HAMID  
 chk. by:

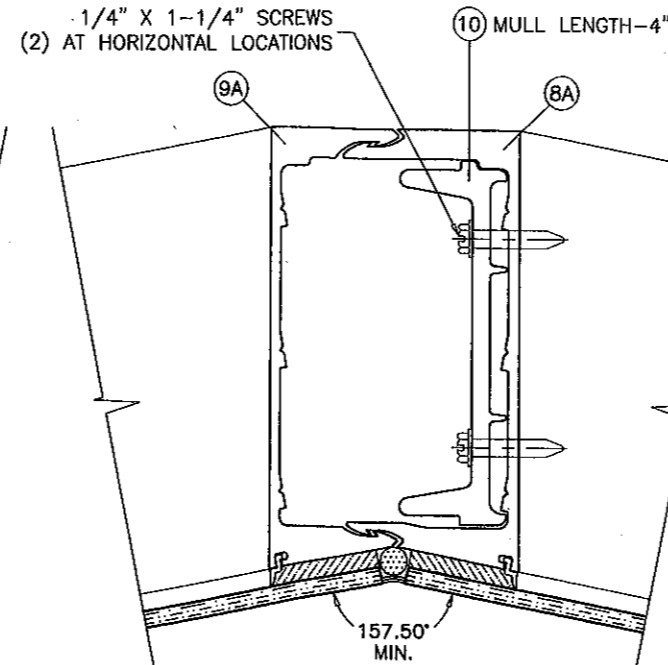
drawing no.  
**W04-105**  
 sheet 11 of 17



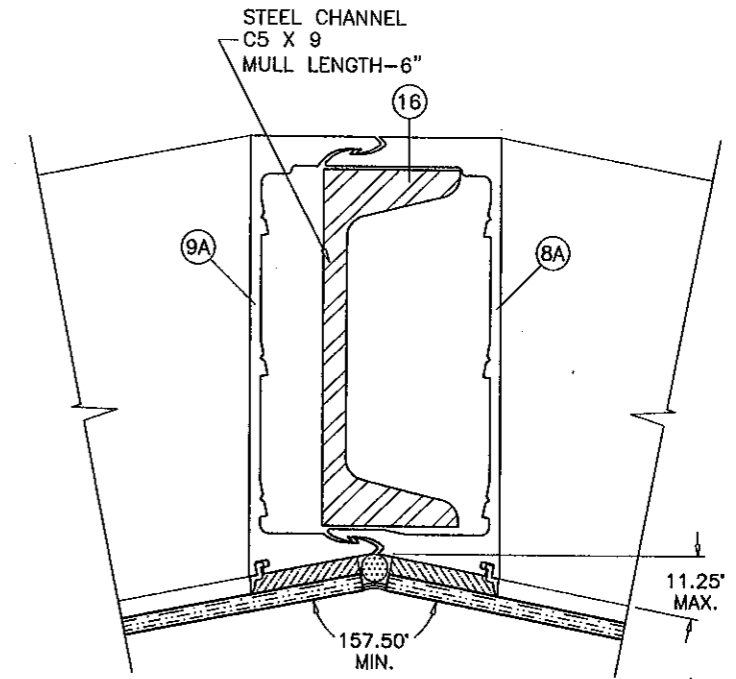
MULLION  
UNREINFORCED  
MAX. L = 120 IN.



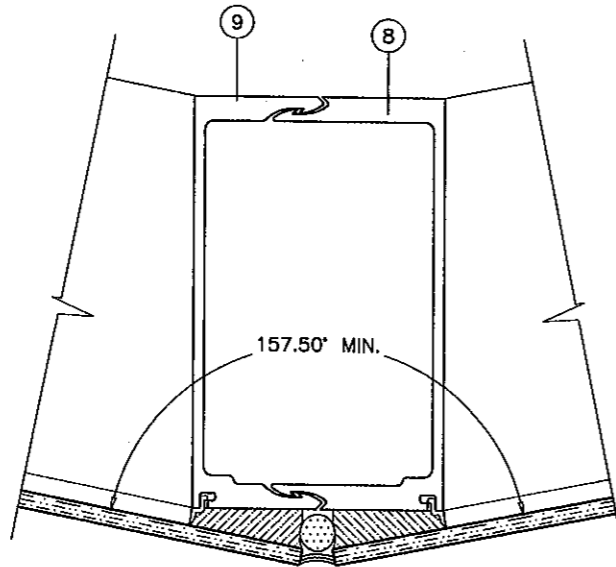
MULLION  
ALUM REINFORCING



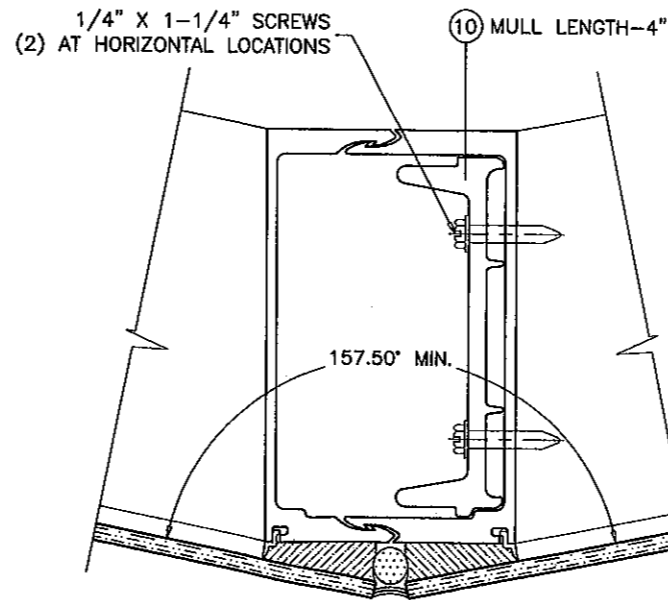
MULLION  
STEEL REINFORCING



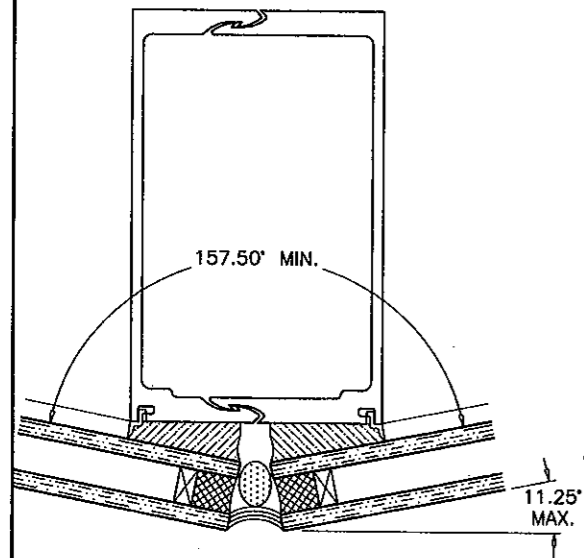
MULLION  
UNREINFORCED  
MAX. L = 120 IN.



MULLION  
ALUM REINFORCING



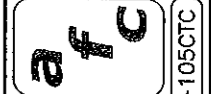
MULLION  
STEEL REINFORCING



EXTERIOR

PRODUCT REVISED  
as complying with the Florida  
Building Code  
Acceptance No. 10-1213.08  
Expiration Date 06/14/2016  
by Ishtiaq J. Chaudhry  
Miami Dade Product Control

Engr: JAVAD AHMAD  
CIVIL  
FLA. PE # 70592  
C.A.N. 3538  
*J.A.*  
MAY 16 2011



**AL-FAROOQ CORPORATION**  
ENGINEERS & PRODUCT DEVELOPMENT  
1235 S.W. 87 AVE  
MIAMI, FLORIDA 33174  
TEL (305) 264-8100 FAX (305) 262-6978

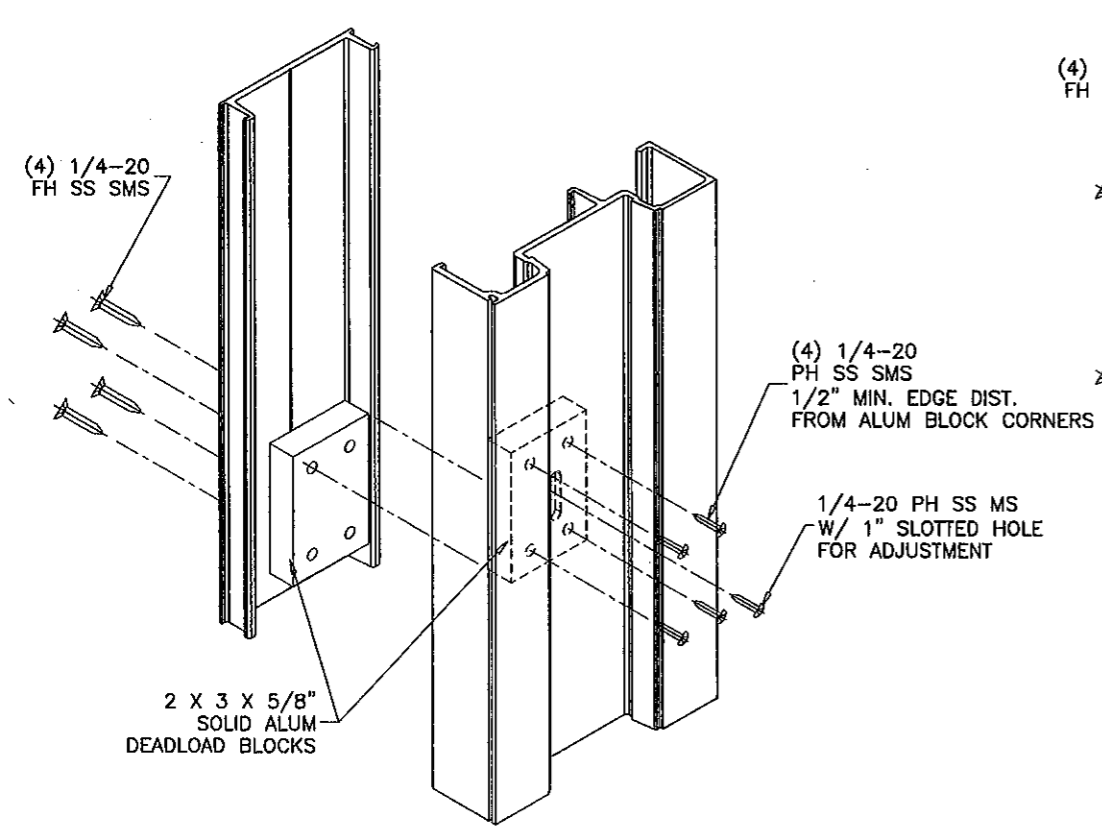
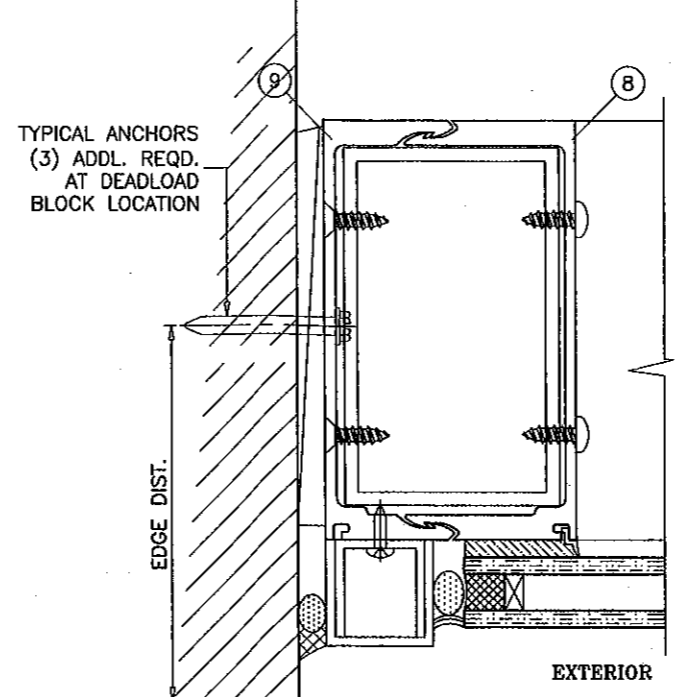
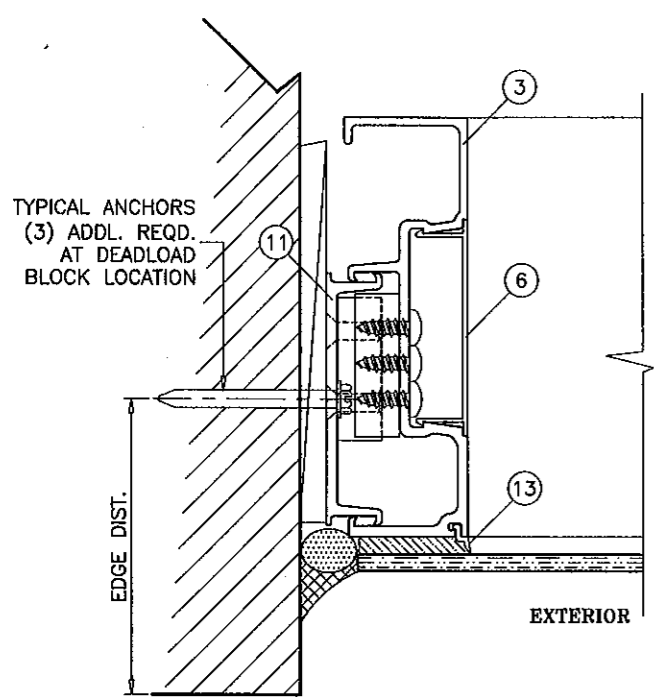
PRO-TECH 7SG ALUM CURTAIN WALL SYSTEM (N.I.)  
**CRAWFORD TRACEY CORPORATION**  
3301 SW 13TH DRIVE  
DEERFIELD BEACH, FL. 33442-8101  
TEL (954) 698-6888 FAX (954) 698-6889

no	date	by	description
E	08.19.08		REV. PER BCCO COMMENTS
F	11.11.10		GENERAL REVISION
G	03.02.11		REV. PER BCCO COMMENTS
H	05.10.11		NO. CHANGE THIS SHEET

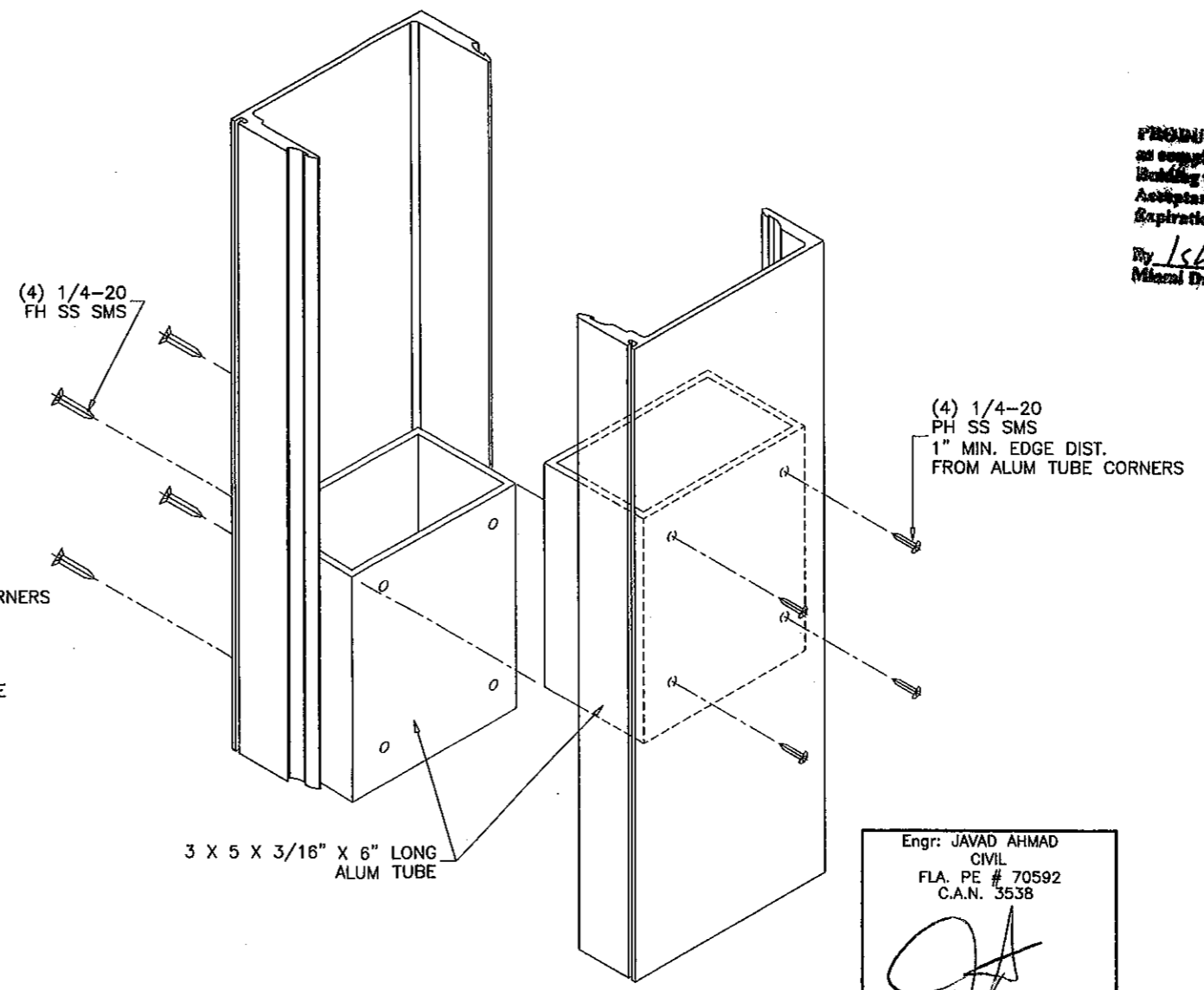
date: 12-30-04  
scale: 3/8" = 1"  
dr. by: HAMID  
chk. by:

drawing no.  
**W04-105**  
sheet 12 of 17

STORE\W04-105CTC



DEADLOAD BLOCKS DETAIL  
TYPICAL JAMBS



DEADLOAD BLOCKS DETAIL  
ANCHORED MULLION AT JAMB

**PRODUCT REVIEWED**  
as complying with the Florida  
Building Code  
Acceptance No. 10-1213-08  
Expiration Date SEP 14, 2016  
By Ishag T. Ghann  
Miami Dade Product Control

Engr: JAVAD AHMAD  
CIVIL  
FLA. PE # 70592  
C.A.N. 3538  
*[Signature]*  
MAY 16 2011

**af c**  
**AL-FAROOQ CORPORATION**  
ENGINEERS & PRODUCT DEVELOPMENT  
1235 S.W. 87 AVE  
MIAMI, FLORIDA 33174  
TEL. (305) 264-8100 FAX. (305) 262-6978  
STORE W04-105CTC

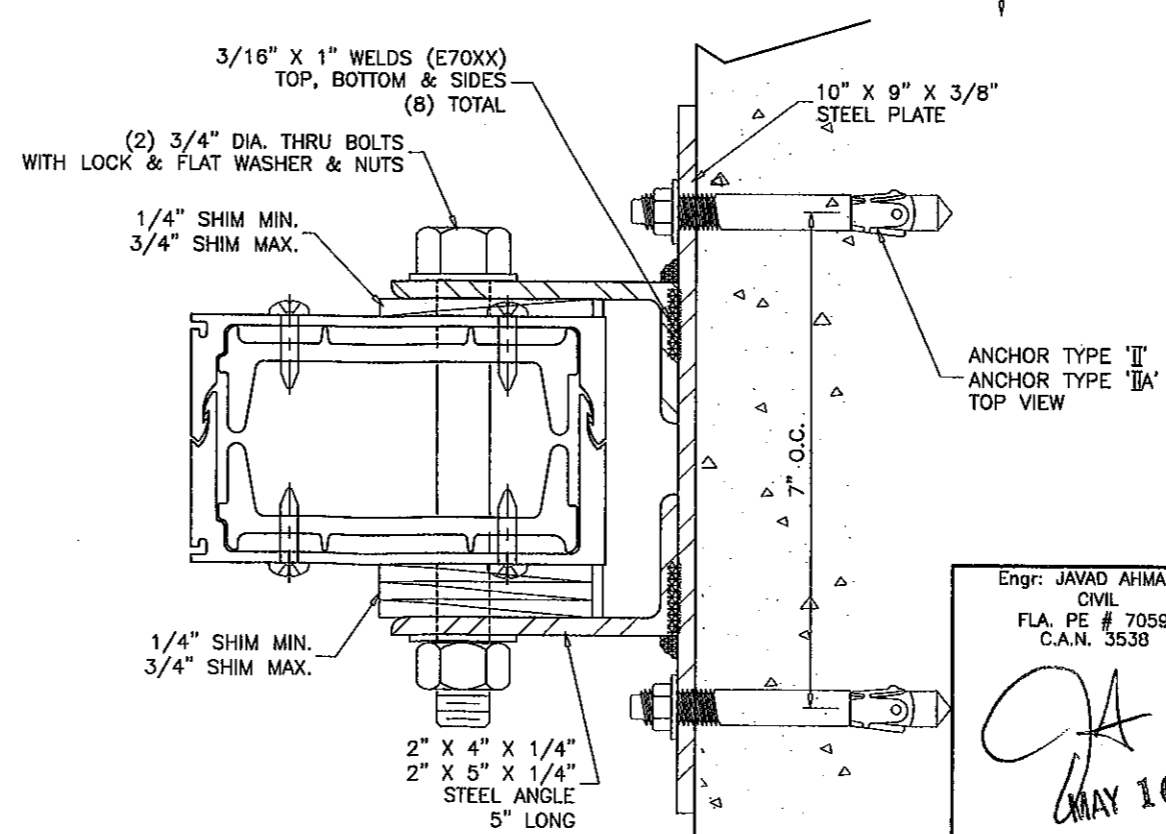
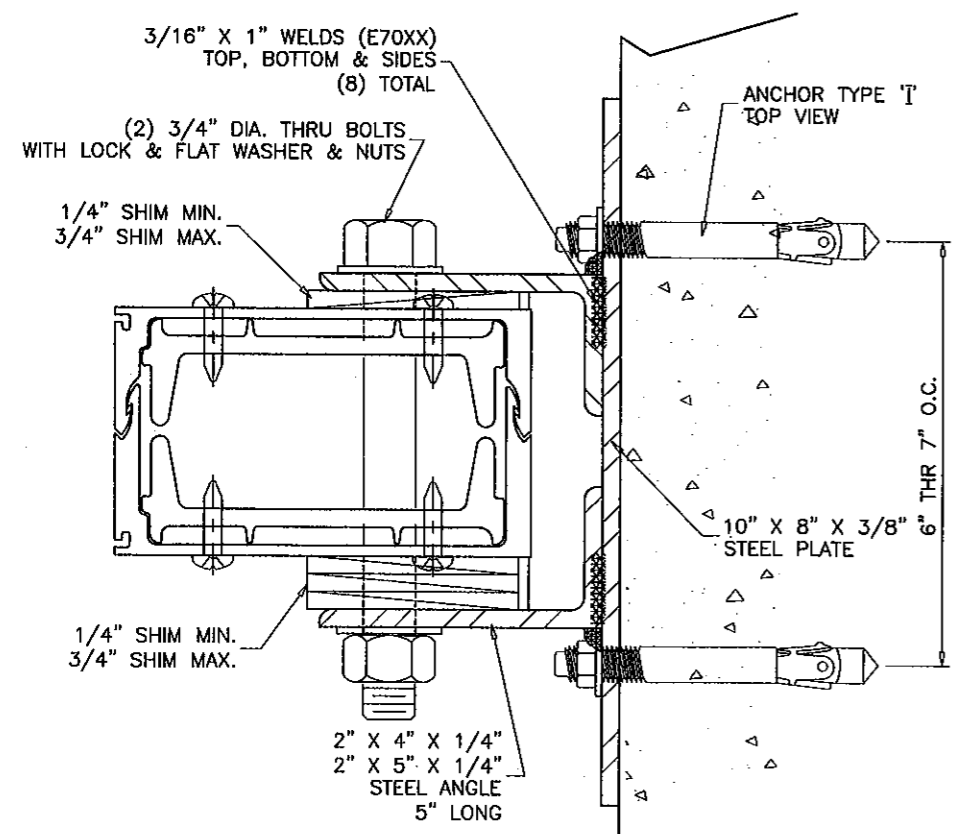
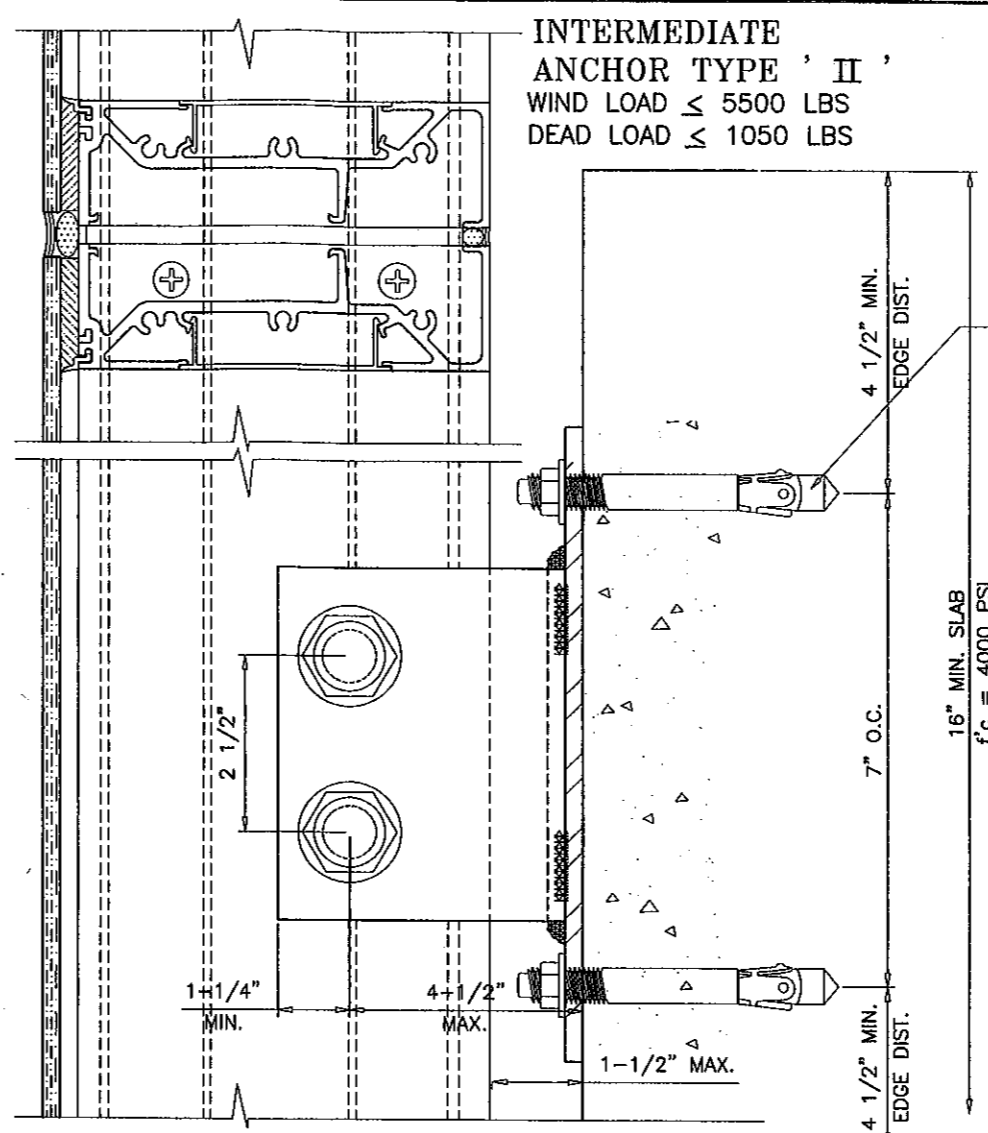
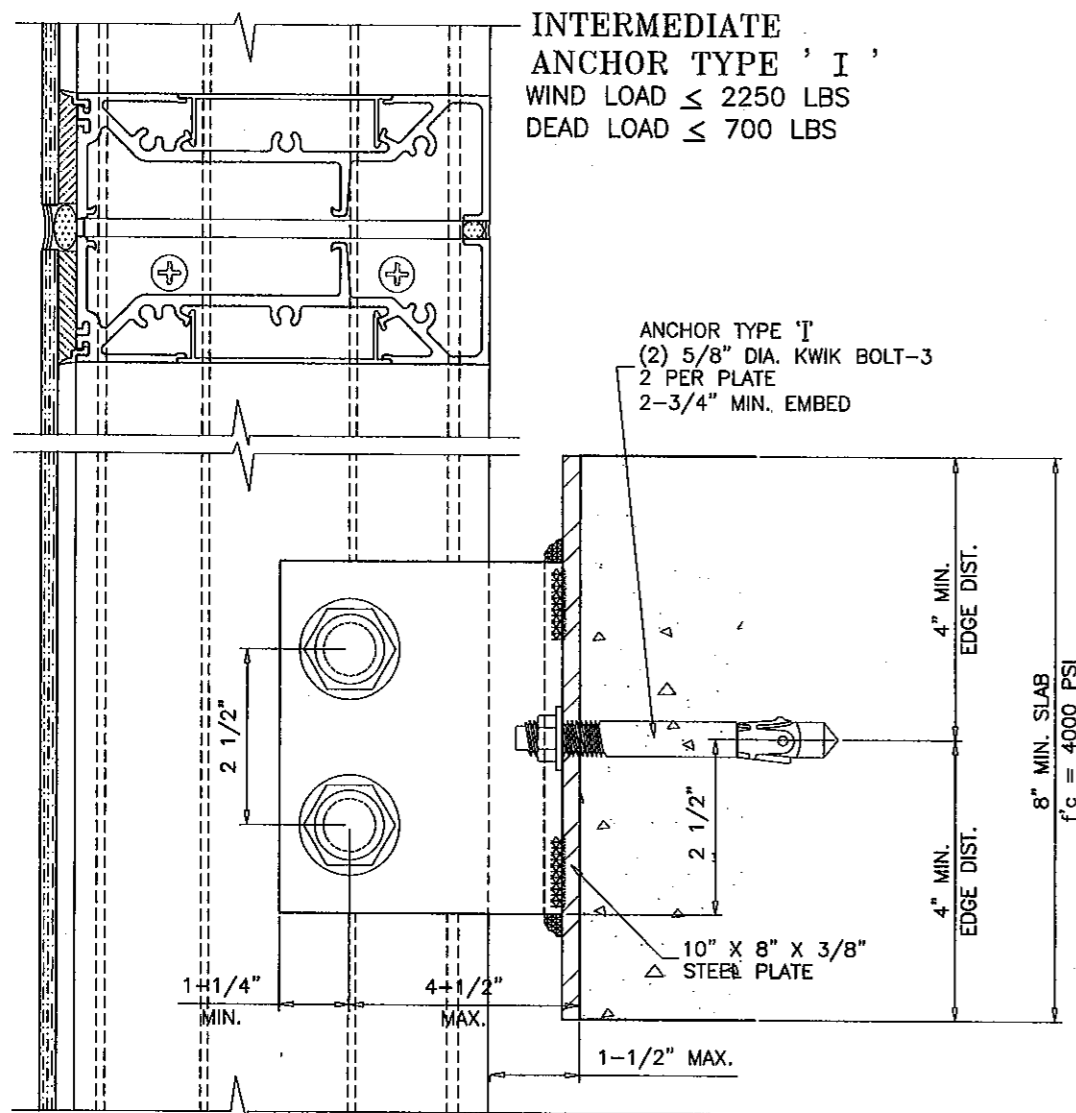
---

PRO-TECH 75G ALUM CURTAIN WALL SYSTEM (N.I.)  
**CRAWFORD TRACEY CORPORATION**  
3301 SW 13TH DRIVE  
DEERFIELD BEACH, FL. 33442-8101  
TEL. (954) 698-6888 FAX. (954) 698-6889

revisions:	no	date	by	description
	E	08.19.08		REV. PER BCCO COMMENTS
	F	11.11.10		GENERAL REVISION
	G	03.02.11		REV. PER BCCO COMMENTS
	H	05.10.11		NO CHANGE THIS SHEET

date: 12-30-04  
scale: 3/8" = 1"  
dr. by: HAMID  
chk. by:

drawing no.  
**W04-105**  
sheet 13 of 17



Engr: JAVAD AHMAD  
CIVIL  
FLA. PE # 70592  
C.A.N. 3538

*[Signature]*  
MAY 16 2011

**PRODUCT REVISED**  
to comply with the Florida  
Building Code  
Acceptance No 10-1213.09  
Expiration Date 5/14/2016  
By *[Signature]*  
Miami Dept Product Control

**af c**

**AL-FAROOQ CORPORATION**  
ENGINEERS & PRODUCT DEVELOPMENT  
12395 S.W. 87 AVE  
MIAMI, FLORIDA 33174  
TEL. (305) 264-8100 FAX. (305) 262-6978  
STORE W04-105CTC

PRO-TECH 75G ALUM CURTAIN WALL SYSTEM (N.I.)

**CRAWFORD TRACEY CORPORATION**  
3301 SW 13TH DRIVE  
DEERFIELD BEACH, FL. 33442-8101  
TEL. (954) 698-6888 FAX. (954) 698-6889

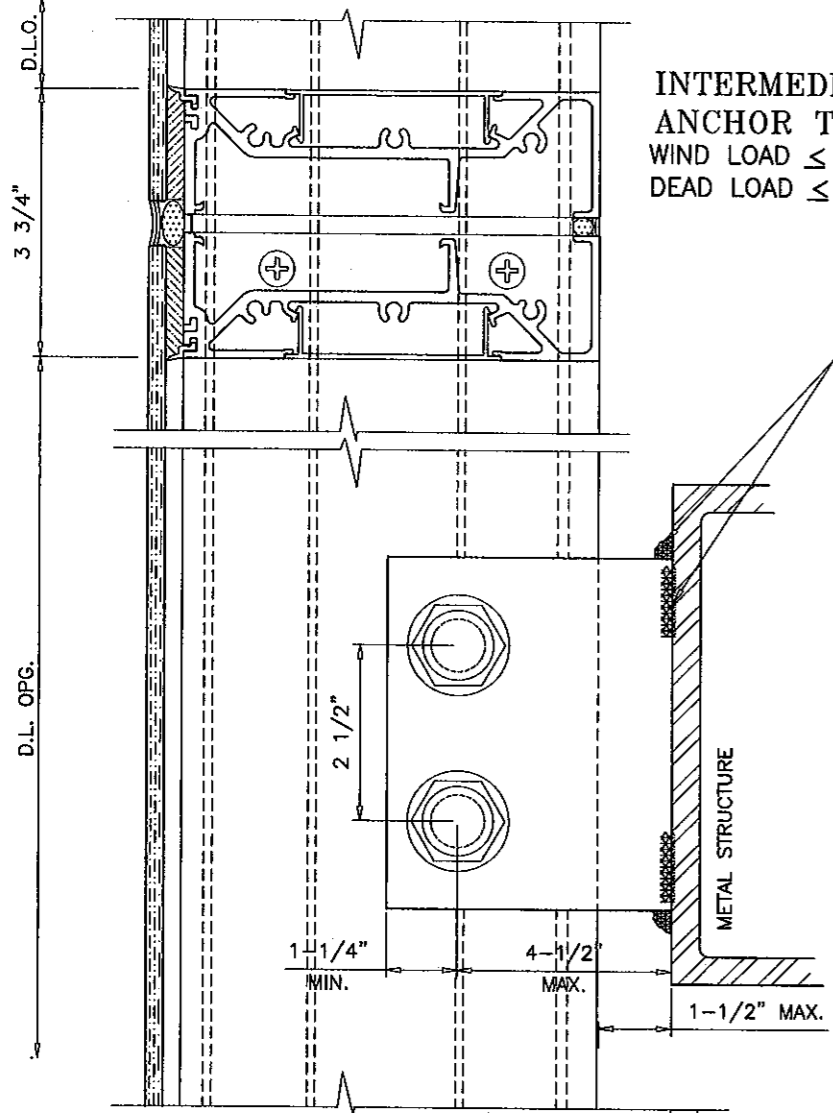
revisions:	no	date	description	by
	E	08.19.08	NO CHANGE THIS SHEET	
	F	11.11.10	GENERAL REVISION	
	G	03.02.11	REV. PER BCCO COMMENTS	
	H	05.10.11	NO CHANGE THIS SHEET	

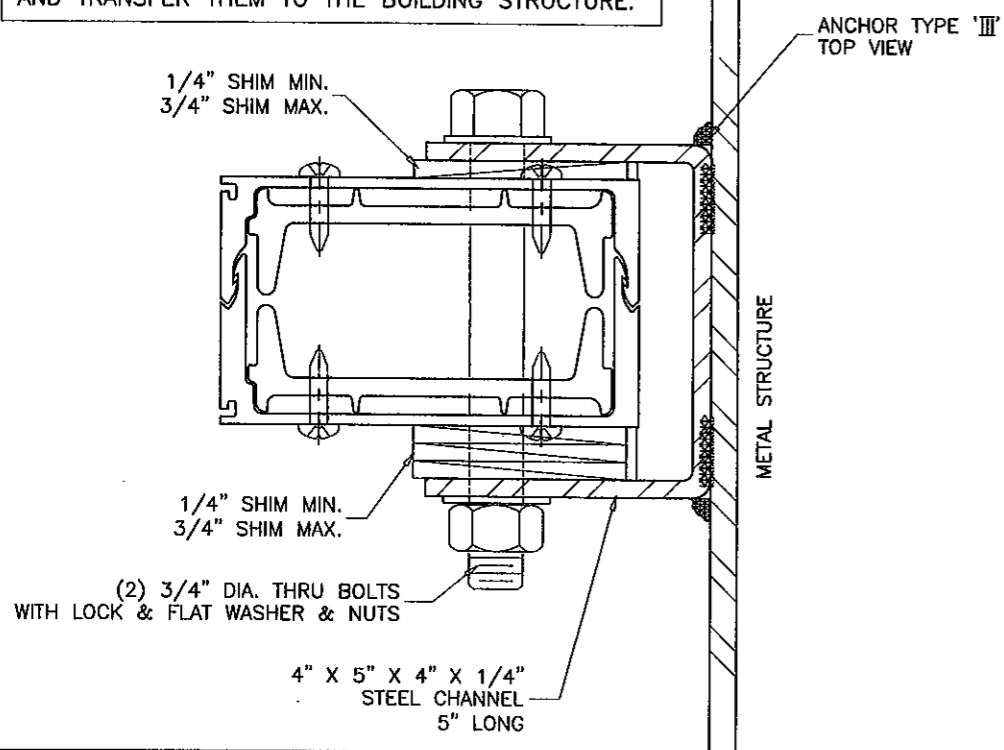
date: 12-30-04	scale: 3/8" = 1"
dr. by: HAMID	chk. by:

drawing no.	W04-105
sheet 14 of 17	



METAL STRUCTURES NOT BY CRAWFORD TRACEY, MUST SUPPORT LOADS IMPOSED BY GLAZING SYSTEM AND TRANSFER THEM TO THE BUILDING STRUCTURE.



PRODUCT REVISED  
 as complying with the Florida  
 Building Code  
 Acceptance No. 10-1213.08  
 Expiration Date SEP 14, 2016  
 By: J. Chaudhary  
 Licensed Trade Product Control

Engr: JAVAD AHMAD  
 CIVIL  
 FLA. PE # 70592  
 C.A.N. 3538

MAY 16 2011

**af c**

**AL-FAROOQ CORPORATION**  
 ENGINEERS & PRODUCT DEVELOPMENT  
 1235 S.W. 87 AVE  
 MIAMI, FLORIDA 33174  
 TEL. (305) 264-8100 FAX. (305) 262-6978  
 STORE W04-105CTC

PRO-TECH 7SG ALUM CURTAIN WALL SYSTEM (N.I.)

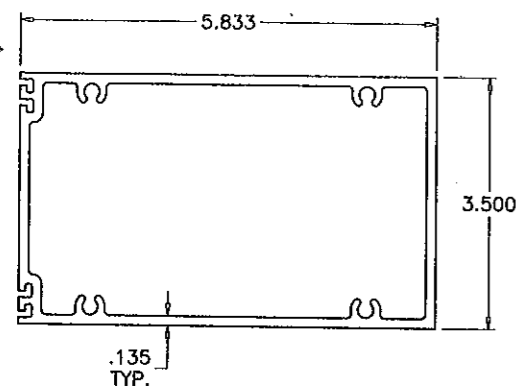
**CRAWFORD TRACEY CORPORATION**  
 3301 SW 13TH DRIVE  
 DEERFIELD BEACH, FL. 33442-8101  
 TEL. (954) 698-6888 FAX. (954) 698-6889

Revisions:

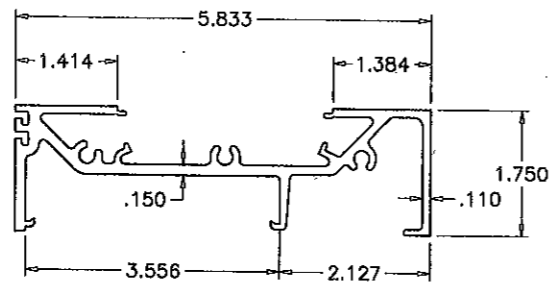
no	date	by	description
E	08.19.08	REV. PER BCCO COMMENTS	
F	11.11.10	GENERAL REVISION	
G	03.02.11	REV. PER BCCO COMMENTS	
H	05.10.11	NO CHANGE THIS SHEET	

date: 12-30-04  
 scale: 3/8" = 1"  
 dr. by: HAMID  
 chk. by:

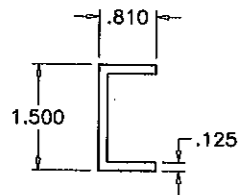
drawing no.  
**W04-105**  
 sheet 15 of 17



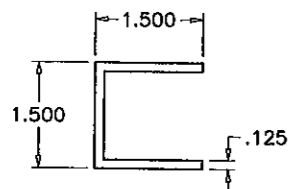
① FRAME HEAD/HORIZONTAL



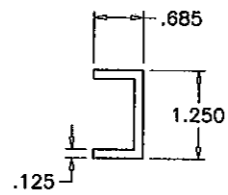
② FRAME HEAD/SILL



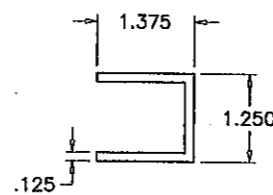
⑤



⑤A

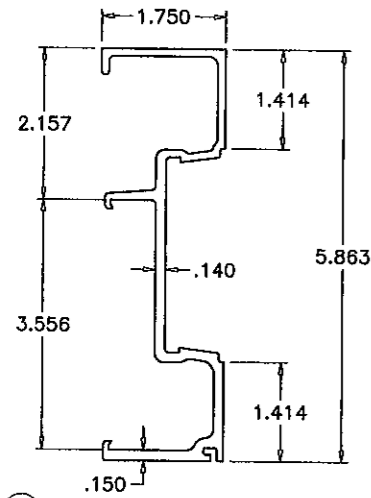


④

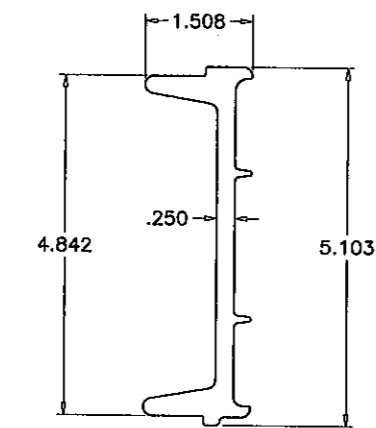


④A

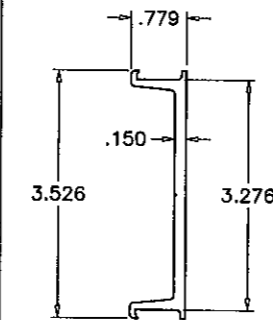
FILLER CHANNELS



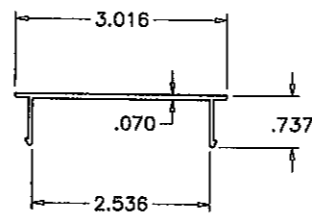
③ FRAME JAMB



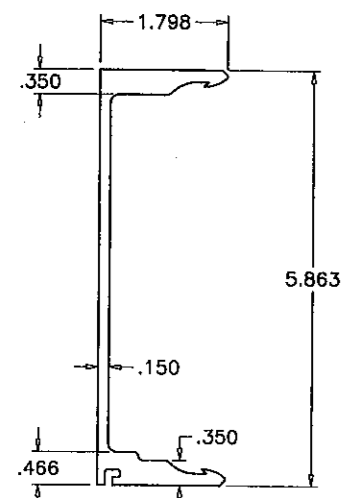
⑩ ALUM REINFORCING OR SPLICE



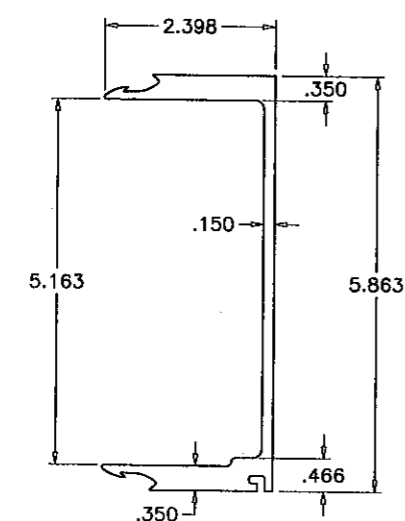
⑪ SUB BUCK



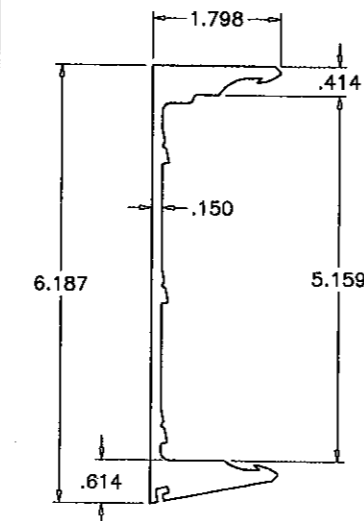
⑥ FRAME COVER



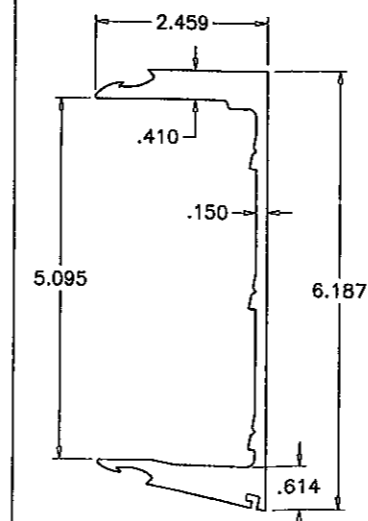
⑨ FEMALE JAMB/MULLION



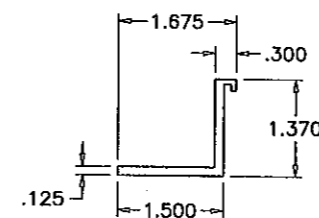
⑧ MALE JAMB/MULLION



⑨A ALT. FEMALE MULLION



⑧A ALT. MALE MULLION



⑭ SETTING PIECE INSUL. GLASS

Engr: JAVAD AHMAD  
CIVIL  
FLA. PE # 70592  
C.A.N. 3538

*[Signature]*  
MAY 18 2016

PRODUCT REVISED  
as complying with the Florida  
Building Code  
Acceptance No 16-1213.08  
Expiration Date SEP 14, 2016  
By Ishaq I. Lhank  
Miami Dade Product Control

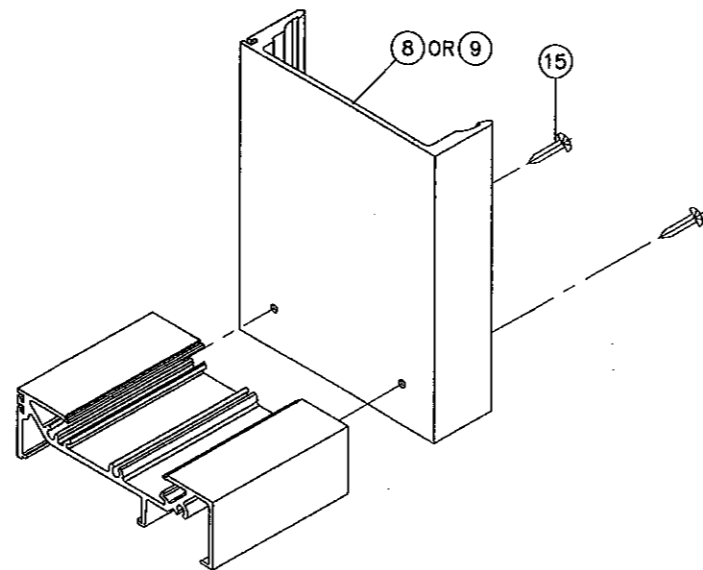
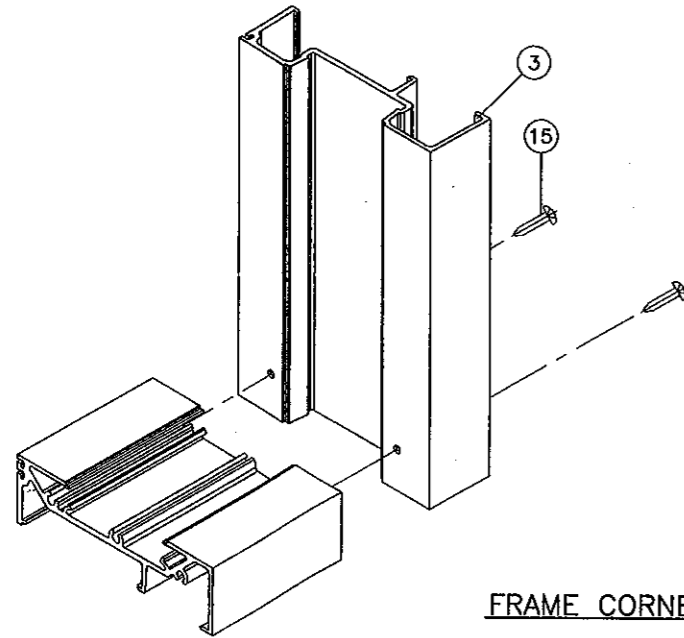
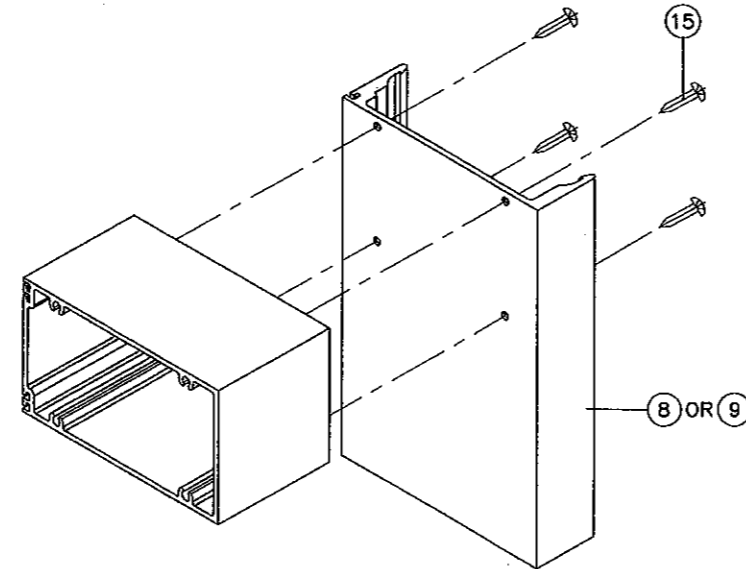
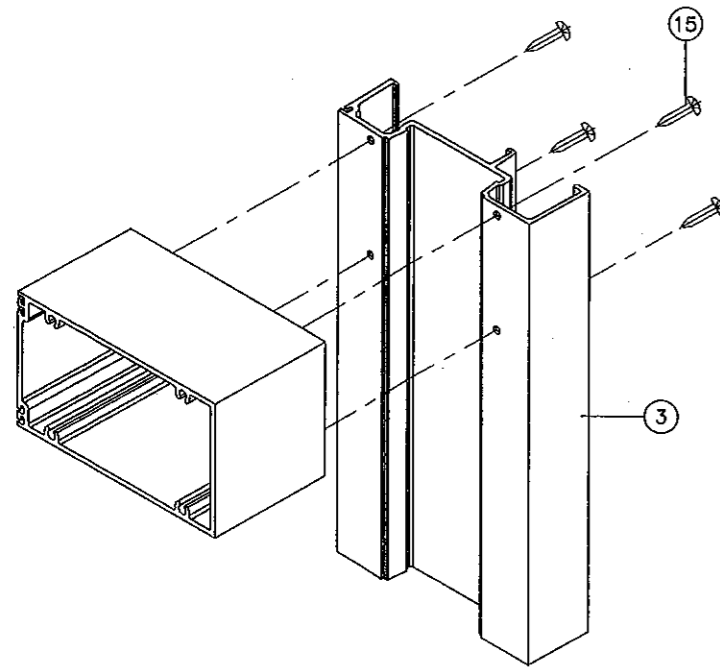
**af c**  
**AL-FAROOQ CORPORATION**  
ENGINEERS & PRODUCT DEVELOPMENT  
1235 S.W. 87 AVE  
MIAMI, FLORIDA 33174  
TEL. (305) 264-8100 FAX. (305) 262-6978  
STORE W04-105CTC

PRO-TECH 75G ALUM CURTAIN WALL SYSTEM (N.I.)  
**CRAWFORD TRACEY CORPORATION**  
3301 SW 13TH DRIVE  
DEERFIELD BEACH, FL. 33442-8101  
TEL. (954) 698-6888 FAX. (954) 698-6889

revisions:	no	date	description
	E	08.19.08	NO CHANGE THIS SHEET
	F	11.11.10	GENERAL REVISION
	G	03.02.11	NO CHANGE THIS SHEET
	H	05.10.11	NO CHANGE THIS SHEET

date: 12-30-04  
scale: 3/8" = 1"  
dr. by: HAMID  
chk. by:  
drawing no.  
**W04-105**  
sheet 16 of 17

ITEM NO.	PART NO.	QUANTITY	DESCRIPTION	MATERIAL	MANF./SUPPLIER/REMARKS
1	170H342	AS REQD.	FRAME HEAD/HORIZONTAL	6105-T5	-
2	170P176	AS REQD.	FRAME HEAD/SILL	6105-T5	-
3	170J176	AS REQD.	FRAME JAMB	6105-T5	-
4	-	AS REQD.	INT. FILLER CHANNEL (MONOLITHIC GLASS)	ALUMINUM	-
4A	-	AS REQD.	INT. FILLER CHANNEL (MONOLITHIC INSUL. GLASS)	ALUMINUM	-
5	-	AS REQD.	EXT. FILLER CHANNEL (MONOLITHIC GLASS)	ALUMINUM	-
5A	-	AS REQD.	EXT. FILLER CHANNEL (MONOLITHIC INSUL. GLASS)	ALUMINUM	-
6	T30U119	AS REQD.	SNAP IN COVER	6063-T6	-
8	170M113	AS REQD.	MALE JAMB/MULLION	6105-T5	-
8A	170M115	AS REQD.	ALT. MALE MULLION	6105-T5	-
9	170M114	AS REQD.	FEMALE JAMB/MULLION	6105-T5	-
9A	170M116	AS REQD.	ALT. FEMALE MULLION	6105-T5	-
10	170R140	AS REQD.	SPLICE	6063-T6	45" LONG
11	B32B070	AS REQD.	SUB-BUCK	6105-T5	-
13	#2	AS REQD.	GLAZING SPACER	POLYPROPYLENE	-
14	170-116	AS REQD.	4" LONG SETTING PIECE (INSUL. GLASS)	6105-T5	AT 1/4 POINTS
15	1/4"x1-1/4"	AS REQD.	FRAME ASSEMBLY SCREWS	ST. STEEL	PAN HEAD PHILLIPS
16	C5 X 9	AS REQD.	STEEL CHANNEL	-	-
17	-	AS REQD.	SETTING BLOCK (1/16" X 1")	NEOPRENE	AT QUARTER POINTS



FRAME CORNERS

PRODUCT REVISED  
 as complying with the Florida  
 Building Code  
 Acceptance No. 10-1213.03  
 Expiration Date 08/14/2016  
 By: Isaac I. Chaudhry  
 Manual Date/Product Control

Engr: JAVAD AHMAD  
 CIVIL  
 FLA. PE # 70592  
 C.A.N. 3538  
 MAY 16 2011

**afc**

**AL-FAROOQ CORPORATION**  
 ENGINEERS & PRODUCT DEVELOPMENT  
 1235 S.W. 87 AVE  
 MIAMI, FLORIDA 33174  
 TEL (305) 264-8100 FAX (305) 262-6978  
 STORE W04-105CTC

---

PRO-TECH 75G ALUM CURTAIN WALL SYSTEM (N.I.)

**CRAWFORD TRACEY CORPORATION**  
 3301 SW 13TH DRIVE  
 DEERFIELD BEACH, FL. 33442-8101  
 TEL (954) 698-6888 FAX (954) 698-6889

NO	DATE	BY	DESCRIPTION
E	08.19.08		NO CHANGE THIS SHEET
F	11.11.10		GENERAL REVISION
G	03.02.11		NO CHANGE THIS SHEET
H	05.10.11		NO CHANGE THIS SHEET

date: 12-30-04  
 scale: 3/8" = 1"  
 dr. by: HAMID  
 chk. by:

drawing no.  
**W04-105**  
 sheet 17 of 17