



MIAMI-DADE COUNTY
BUILDING AND NEIGHBORHOOD COMPLIANCE DEPARTMENT (BNC)
BOARD AND CODE ADMINISTRATION DIVISION

MIAMI-DADE COUNTY
PRODUCT CONTROL SECTION
 11805 SW 26 Street, Room 208
 Miami, Florida 33175-2474
 T (786) 315-2590 F (786) 315-2599

NOTICE OF ACCEPTANCE (NOA)

www.miamidade.gov/building/home/asp

Crawford Tracy Corporation
3301 S. W. 13 th Drive
DeerField Beach, Fl. 33442

SCOPE:

This NOA is being issued under the applicable rules and regulations governing the use of construction materials. The documentation submitted has been reviewed and accepted by Miami-Dade County BNC -Product Control Section to be used in Miami Dade County and other areas where allowed by the Authority Having Jurisdiction (AHJ).

This NOA shall not be valid after the expiration date stated below. The Miami-Dade County Product Control Section (In Miami Dade County) and/or the AHJ (in areas other than Miami Dade County) reserve the right to have this product or material tested for quality assurance purposes. If this product or material fails to perform in the accepted manner, the manufacturer will incur the expense of such testing and the AHJ may immediately revoke, modify, or suspend the use of such product or material within their jurisdiction. BNC reserves the right to revoke this acceptance, if it is determined by Miami-Dade County Product Control Section that this product or material fails to meet the requirements of the applicable building code.

This product is approved as described herein, and has been designed to comply with the Florida Building Code, including the High Velocity Hurricane Zone.

DESCRIPTION: Series "Pro-Tech 7SG " Aluminum Glazed Curtain Wall System-LM Impact

APPROVAL DOCUMENT: Drawing No. **W04-78**, titled "Pro-Tech 7SG Alum Curtain Wall System (LMI)", sheets 1 through 5, 5.1, 6 through 17 of 17, dated 05/25/04 and last revised on May 16, 2011, prepared by Al-Farooq Corporation, signed and sealed by Javad Ahmad, P. E., bearing the Miami-Dade County Product Control Revision stamp with the Notice of Acceptance number and expiration date by the Miami-Dade County Product Control Section.

MISSILE IMPACT RATING: Large Missile Impact Resistant

1. Mullion load capacity Max=120 PSF. Lower Design Pressure from mullion, glass and/or anchor shall control.
2. Installation to steel structure is limited as approved in NOA. Embedded steel stud not a part of this approval.
3. Min 1/4" metal thickness is required for installation into Metal substrate.

LABELING: Each unit shall bear a permanent label with the manufacturer's name or logo, city, state and Series/Model and following statement: "Miami-Dade County Product Control Approved", unless otherwise noted herein.

RENEWAL of this NOA shall be considered after a renewal application has been filed and there has been no change in the applicable building code negatively affecting the performance of this product.

TERMINATION of this NOA will occur after the expiration date or if there has been a revision or change in the materials, use, and/or manufacture of the product or process. Misuse of this NOA as an endorsement of any product, for sales, advertising or any other purposes shall automatically terminate this NOA. Failure to comply with any section of this NOA shall be cause for termination and removal of NOA.

ADVERTISEMENT: The NOA number preceded by the words Miami-Dade County, Florida, and followed by the expiration date may be displayed in advertising literature. If any portion of the NOA is displayed, then it shall be done in its entirety.

INSPECTION: A copy of this entire NOA shall be provided to the user by the manufacturer or its distributors and shall be available for inspection at the job site at the request of the Building Official.

This NOA **revises & renews NOA # 08-0415.06** and consists of this page 1 and evidence pages E-1, as well as approval document mentioned above.

The submitted documentation was reviewed by **Ishaq I. Chanda, P.E.**

NOA No 10-1213.10
Expiration Date: March 02, 2016
Approval Date: June 09, 2011



6/2/11

Crawford Tracy Corporation

NOTICE OF ACCEPTANCE: EVIDENCE SUBMITTED

A. DRAWINGS (transferred from file # 08-0415.06)

1. Manufacturer's die drawings and sections.
2. Drawing No. **W04-78**, titled "Pro-Tech 7SG Alum Curtain Wall System (LMI)", sheets 1 through 5, 5.1, 6 through 17 of 17, dated 05/25/04 and last revised on May 16, 2011, prepared by Al-Farooq Corporation, signed and sealed by Javad Ahmad, P.E.

B. TESTS (transferred from file # 08-0415.06)

1. Test reports on
 - 1) Air Infiltration Test per FBC, TAS 202-94
 - 2) Uniform Static Air Pressure Test Loading per FBC, TAS 202-94
 - 3) Water Resistance Test per FBC, TAS 202-94
 - 4) Large Missile Impact Test per FBC, TAS 201-94
 - 5) Small Missile Impact Test per FBC, TAS 201-94
 - 6) Cyclic Loading Test per FBC, TAS 203-94

Along with installation diagram of aluminum glazed curtain wall system marked-up by American Test Lab of South Florida, Test Report No. **ATL 0315.01-04 (LMI)** dated 08-19-04 and **ATL 0217.01-04 (SMD)** dated 08-23-04 and revised by addendum letter dated 01-30-06, both signed and sealed by William R. Mehner, P.E. & Henry Hatem, P. E.

2. Additional Test reports on
 - 1) Uniform Static Air Pressure Test, Loading per TAS 202-94
 - 2) Large & Small Missile Impact Test per FBC, TAS 201-94
 - 3) Cyclic Loading Test per FBC, TAS 203-94

Along with installation diagram of aluminum glazed curtain wall system marked-up by American Test Lab of South Florida, Test Report No. **ATL 1129.01-04 (LMI)** dated 08-19-04, revised by addendum letter dated 01-30-06 and Test Report No. **ATL 0419.02-04 (SMD)**, dated 08-19-04, both signed & sealed by William R. Mehner, P.E. & Henry Hatem, and P. E.

3. Additional Test report **ATL-1130.01-07** dated 01/29/08 for insulated glazed C.W. Sys per TAS 201, 202 & 203, issued by American Test Lab, signed & sealed by William R. Mehner, P.E. & Henry Hatem, P. E.

C. CALCULATIONS

1. Anchor verification calculations and structural analysis, complying with FBC-2007, prepared by Al Farooq-Corporation, dated 11/22/10, 03/03/11 and last revised on May 16, 2011, signed and sealed by Javad Ahmad, P.E.
2. Anchor calculations and structural analysis, dated 03-17-08 and revised on 09/08/2008, prepared by Al-Farooq Corporation, signed and sealed by late Dr. Humayoun Farooq, P. E.(file # **08-0415.06**)
3. Glazing complies w/ ASTME-1300-02 & -04

D. QUALITY ASSURANCE

1. Miami Dade Building and Neighborhood Compliance Department (BNC).

E. MATERIAL CERTIFICATIONS

1. Notice of Acceptance No. **07-1116.04** issued to E.I. DuPont DeNemours & Co., Inc. for their "**DuPont Sentry Glass @ Plus**", expiring on 01/14/12.
2. Notice of Acceptance No. **08-0520.08** issued to Solutia Inc. for their "**Vanceva Composites Glass Interlayer**", expiring on 12/11/13.

F. STATEMENTS

1. Statement letter of conformance and letter of no financial interest, prepared by Al-Farooq Corporation, dated 11/03/10, signed and sealed by Javad Ahmad, P.E.
2. Statement of Lab compliance, as part of above test reports.

G. OTHER

1. This NOA revises NOA # **08-0415.06**, expired on March 02, 2011.
2. Test proposals dated 11/06/2003 & 08/27/07, approved by BCCO. Ishaq I. Chanda

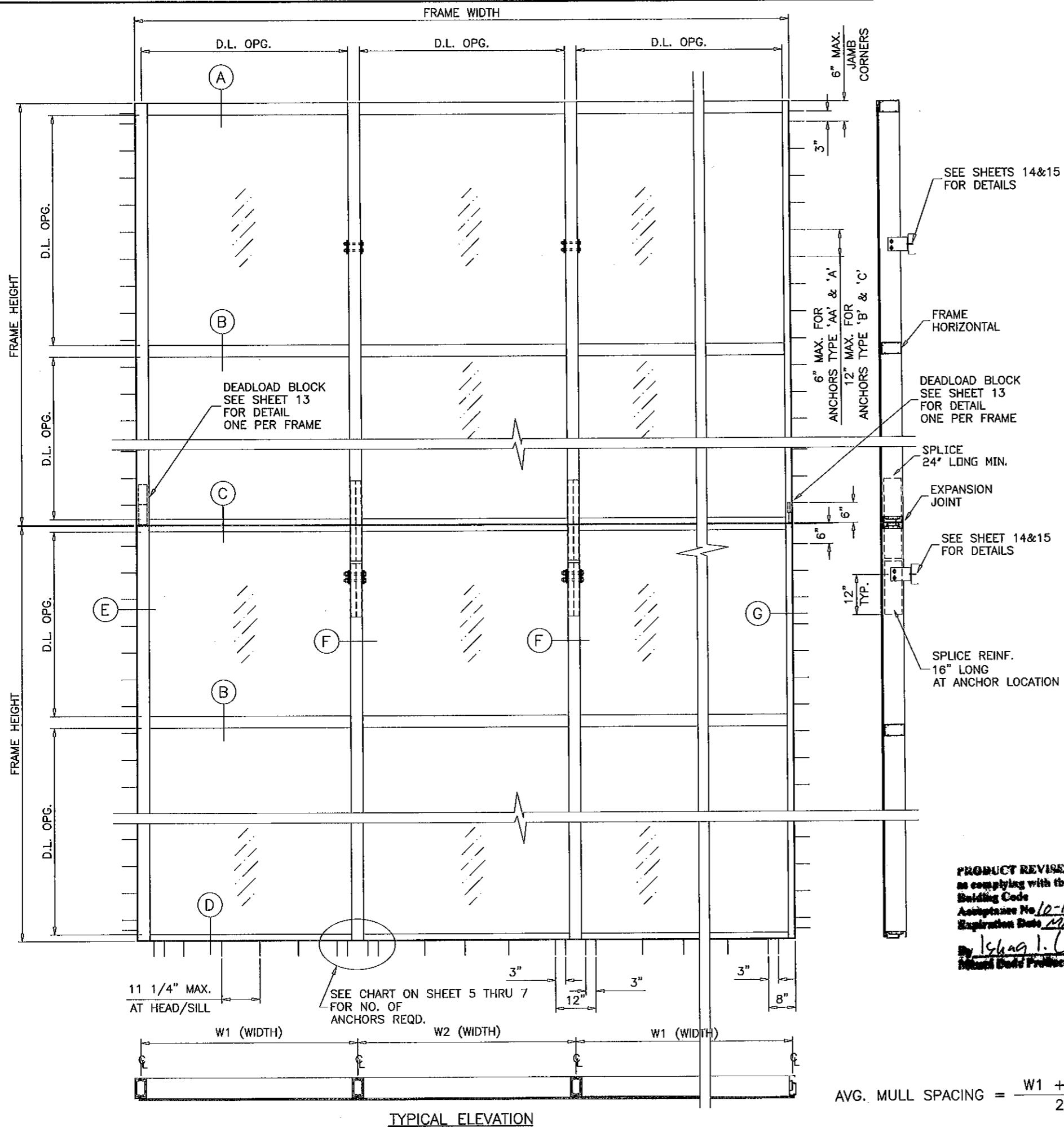
Ishaq I. Chanda, P.E.

Product Control Examiner

NOA No 10-1213.10

Expiration Date: March 02, 2016

Approval Date: June 09, 2011



PRO-TECH 7SG ALUM CURTAIN WALL SYSTEM

CURTAIN WALL SYSTEM IS RATED FOR LARGE MISSILE IMPACT. SHUTTERS ARE NOT REQD. SEE SHEETS 2 THRU 8 FOR DESIGN LOAD RATING.

CODE REQUIREMENTS FOR SAFEGUARDS MUST BE OBSERVED.

THIS PRODUCT HAS BEEN DESIGNED AND TESTED TO COMPLY WITH THE REQUIREMENTS OF THE FLORIDA BUILDING CODE 2007 EDITION INCLUDING HIGH VELOCITY HURRICANE ZONE (HVHZ).

WOOD BUCKS BY OTHERS, MUST BE ANCHORED PROPERLY TO TRANSFER LOADS TO THE STRUCTURE.

ANCHORS SHALL BE AS LISTED, SPACED AS SHOWN ON DETAILS, ANCHORS EMBEDMENT TO BASE MATERIAL SHALL BE BEYOND WALL DRESSING OR STUCCO. ANCHORING OR LOADING CONDITIONS NOT SHOWN IN THESE DETAILS ARE NOT PART OF THIS APPROVAL.

A LOAD DURATION INCREASE IN ALLOWABLE STRESS IS USED IN DESIGN OF ANCHORS INTO WOOD ONLY.

MATERIALS INCLUDING BUT NOT LIMITED TO STEEL/METAL SCREWS, THAT COME INTO CONTACT WITH OTHER DISSIMILAR MATERIALS SHALL MEET THE REQUIREMENTS OF 2004/2007 FLORIDA BLDG. CODE SECTION 2003.8.4.

INSTRUCTIONS:

USE CHARTS AS FOLLOWS.

- STEP 1** DETERMINE DESIGN WIND LOAD REQUIREMENT BASED ON WIND VELOCITY, BLDG. HEIGHT, WIND ZONE USING APPLICABLE ASCE 7 STANDARD.
- STEP 2** CHECK MULLION CAPACITY FOR A GIVEN SPACING AND HEIGHT USING CHARTS ON SHEET 2 FOR SINGLE SPANS, AND CHARTS ON SHEET 3 FOR EQUAL MULTIPLE SPANS.
- STEP 3** SEE CHART ON SHEET 4 FOR DESIGN LOAD CAPACITY OF DESIRED GLASS SIZE.
- STEP 4** USING CHART ON SHEET 5, 5.1 THRU 7 SELECT ANCHOR OPTION WITH DESIGN RATING MORE THAN DESIGN LOAD SPECIFIED IN STEP 1 ABOVE.
- STEP 5** FOR CURTAIN WALL INTERMEDIATE ANCHOR CAPACITY SEE SHEETS 14 AND 15.
- STEP 6** THE LOWEST VALUE RESULTING FROM STEPS 2, 3, 4 AND 5 SHALL APPLY TO ENTIRE SYSTEM.

PRODUCT REVISED
 as complying with the Florida
 Building Code
 Acceptance No. 10-1213.10
 Expiration Date 02/02/2016
 By: Ishtaq I. Chaudhry
 National Glass Product Council

LAMINATED GLASS
 LAM. INSUL. GLASS
 LARGE MISSILE IMPACT

Engr: JAVAD AHMAD
 CIVIL
 FLA. PE # 70592
 C.A.N. 3538

 MAY 16 2011

$$\text{AVG. MULL SPACING} = \frac{W1 + W2}{2}$$

af c

AL-FAROOQ CORPORATION
 ENGINEERS & PRODUCT DEVELOPMENT
 12335 S.W. 87 AVE
 MIAMI, FLORIDA 33174
 TEL. (305) 264-8100 FAX. (305) 262-6978
 STORE\W04-78CTC

PRO-TECH 7SG ALUM CURTAIN WALL SYSTEM (L.M.I.)
CRAWFORD TRACEY CORPORATION
 3301 SW 13TH DRIVE
 DEERFIELD BEACH, FL. 33442-8101
 TEL. (954) 698-6888 FAX. (954) 698-6889

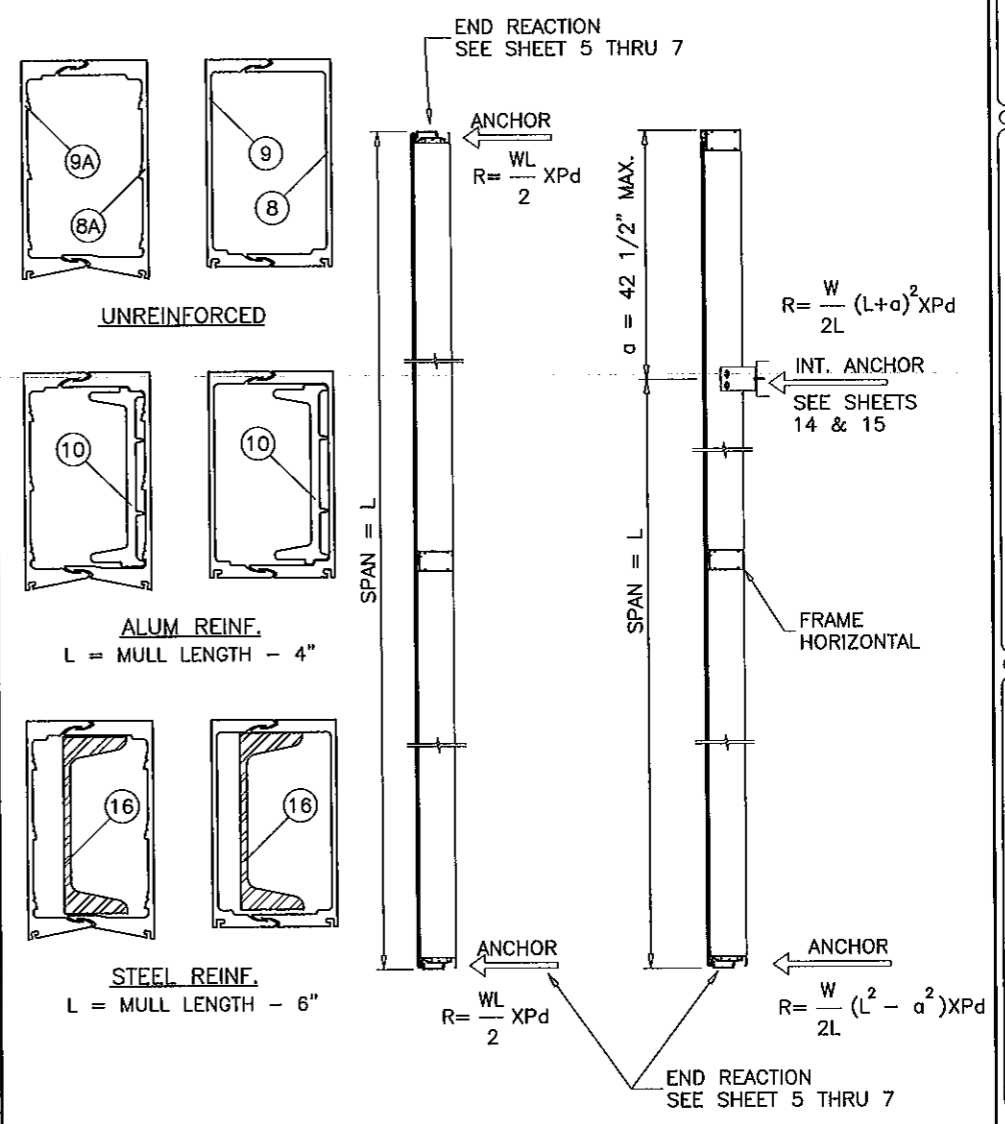
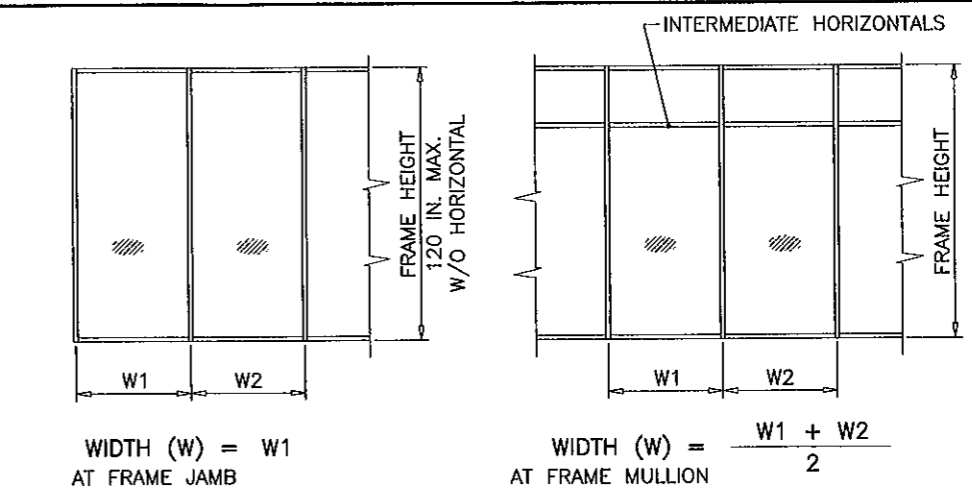
NO.	DATE	BY	DESCRIPTION
D	06.19.08	REV. PER BCCO COMMENTS	NO CHANGE THIS SHEET
E	08.19.08	REV. PER BCCO COMMENTS	REV. PER BNC COMMENTS
F	03.02.11	REV. PER BCCO COMMENTS	REV. PER BNC COMMENTS
G	05.10.11	REV. PER BCCO COMMENTS	REV. PER BNC COMMENTS

date: 05-25-04
 scale: 3/8"=1'-0"
 dr. by: HAMID
 chk. by:

drawing no. **W04-78**
 sheet 1 of 17

MULLION LOAD CAPACITY - PSF SINGLE SPANS (WITH OR WITHOUT INTERMEDIATE HORIZONTALS)				
NOMINAL DIMS.		UNREINFORCED	ALUM REINF.	STEEL REINF.
WIDTH (W)	FRAME HEIGHT	EXT.(+) & INT.(-)	EXT.(+) & INT.(-)	EXT.(+) & INT.(-)
36"	120"	120.0	120.0	120.0
39"		120.0	120.0	120.0
42"		120.0	120.0	120.0
45"		120.0	120.0	120.0
48"		120.0	120.0	120.0
51"		120.0	120.0	120.0
54"		120.0	120.0	120.0
57"		120.0	120.0	120.0
60"		100.0	120.0	120.0
63"		-	120.0	120.0
66"		-	120.0	120.0
69"		-	120.0	120.0
72"	-	120.0	120.0	
36"	126"	-	120.0	120.0
39"		-	120.0	120.0
42"		-	120.0	120.0
45"		-	120.0	120.0
48"		-	120.0	120.0
51"		-	120.0	120.0
54"		-	120.0	120.0
57"		-	120.0	120.0
60"		-	120.0	120.0
63"		-	120.0	120.0
66"		-	120.0	120.0
69"		-	120.0	120.0
72"	-	120.0	120.0	
36"	132"	-	120.0	120.0
39"		-	120.0	120.0
42"		-	120.0	120.0
45"		-	120.0	120.0
48"		-	120.0	120.0
51"		-	120.0	120.0
54"		-	120.0	120.0
57"		-	120.0	120.0
60"		-	120.0	120.0
63"		-	120.0	120.0
66"		-	114.6	120.0
69"		-	109.6	120.0
72"	-	105.0	120.0	
36"	138"	-	120.0	120.0
39"		-	120.0	120.0
42"		-	120.0	120.0
45"		-	120.0	120.0
48"		-	120.0	120.0
51"		-	120.0	120.0
54"		-	120.0	120.0
57"		-	116.1	120.0
60"		-	110.3	120.0
63"		-	105.1	120.0
66"		-	100.3	120.0
69"		-	95.9	120.0
72"	-	91.9	118.7	

MULLION LOAD CAPACITY - PSF SINGLE SPANS (WITH OR WITHOUT INTERMEDIATE HORIZONTALS)					
NOMINAL DIMS.		UNREINFORCED	ALUM REINF.	STEEL REINF.	
WIDTH (W)	FRAME HEIGHT	EXT.(+) & INT.(-)	EXT.(+) & INT.(-)	EXT.(+) & INT.(-)	
36"	144"	-	120.0	120.0	
39"		-	120.0	120.0	
42"		-	120.0	120.0	
45"		-	120.0	120.0	
48"		-	120.0	120.0	
51"		-	114.2	120.0	
54"		-	107.9	120.0	
57"		-	102.2	120.0	
60"		-	97.1	120.0	
63"		-	92.5	120.0	
66"		-	88.3	118.9	
69"		-	84.4	113.7	
36"	150"	-	120.0	120.0	
39"		-	120.0	120.0	
42"		-	120.0	120.0	
45"		-	114.5	120.0	
48"		-	107.4	120.0	
51"		-	101.1	120.0	
54"		-	95.4	120.0	
57"		-	90.4	120.0	
60"		-	85.9	120.0	
63"		-	81.8	114.8	
66"		-	78.1	109.6	
36"		156"	-	120.0	120.0
39"	-		117.5	120.0	
42"	-		109.1	120.0	
45"	-		101.8	120.0	
48"	-		95.5	120.0	
51"	-		89.8	120.0	
54"	-		84.8	120.0	
57"	-		80.4	117.3	
60"	-		76.4	111.5	
63"	-		72.7	106.1	
36"	162"		-	113.6	120.0
39"			-	104.9	120.0
42"		-	97.4	120.0	
45"		-	90.9	120.0	
48"		-	85.2	120.0	
51"		-	80.2	120.0	
54"		-	75.8	114.8	
57"		-	71.8	108.8	
60"		-	68.2	103.4	
36"		168"	-	101.9	120.0
39"			-	94.1	120.0
42"			-	87.3	120.0
45"	-		81.5	120.0	
48"	-		76.4	120.0	
51"	-		71.9	113.1	
54"	-		67.9	106.8	
57"	-		64.4	101.2	
60"	-		61.1	96.1	



INTERMEDIATE ANCHOR WIND AND DEAD LOAD MUST NOT EXCEED INTERMEDIATE ANCHOR CAPACITY PER SHEETS 14 & 15.

Engr: JAVAD AHMAD
CIVIL
FLA. PE # 70592
C.A.N. 3538
MAY 16 2011

PRODUCT REVISED
as complying with the Florida
Building Code
Acceptance No. 10-1213-10
Expiration Date MAR 02, 2016
Ishaq I. Chaudhry
Product Control

afC
AL-FAROOQ CORPORATION
ENGINEERS & PRODUCT DEVELOPMENT
1235 S.W. 87 AVE
MIAMI, FLORIDA 33174
TEL. (305) 264-8100 FAX. (305) 262-6978
STORE W04-78CTC

PRO-TECH 75G ALUM CURTAIN WALL SYSTEM (L.M.I.)
CRAWFORD TRACEY CORPORATION
3301 SW 13TH DRIVE
DEERFIELD BEACH, FL. 33442-8101
TEL. (954) 698-6888 FAX. (954) 698-6889

NO.	DATE	DESCRIPTION
D	06.19.08	REV. PER BCCO COMMENTS
E	08.19.08	NO CHANGE THIS SHEET
F	03.02.11	REV. PER BCCO COMMENTS
G	05.10.11	NO CHANGE THIS SHEET

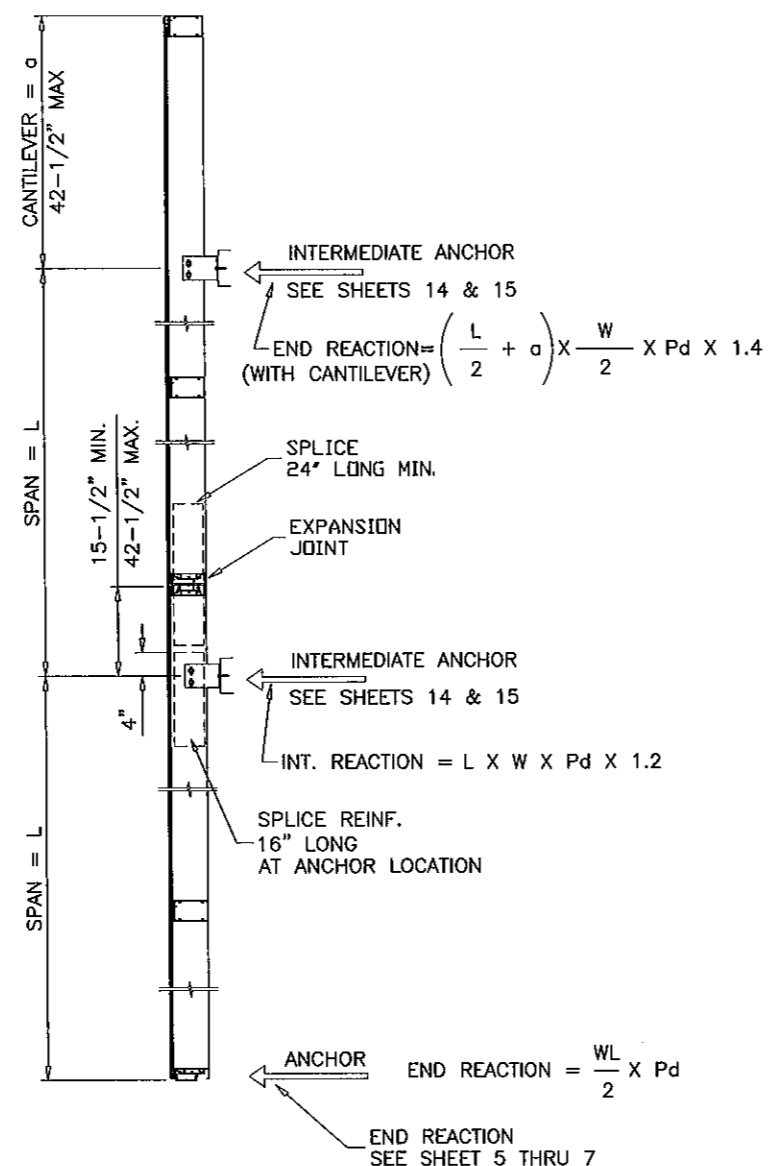
Revisions:

date: 05-25-04
scale: 3/8"=1'-0"
dr. by: HAMID
chk. by:

drawing no. **W04-78**
sheet 2 of 17

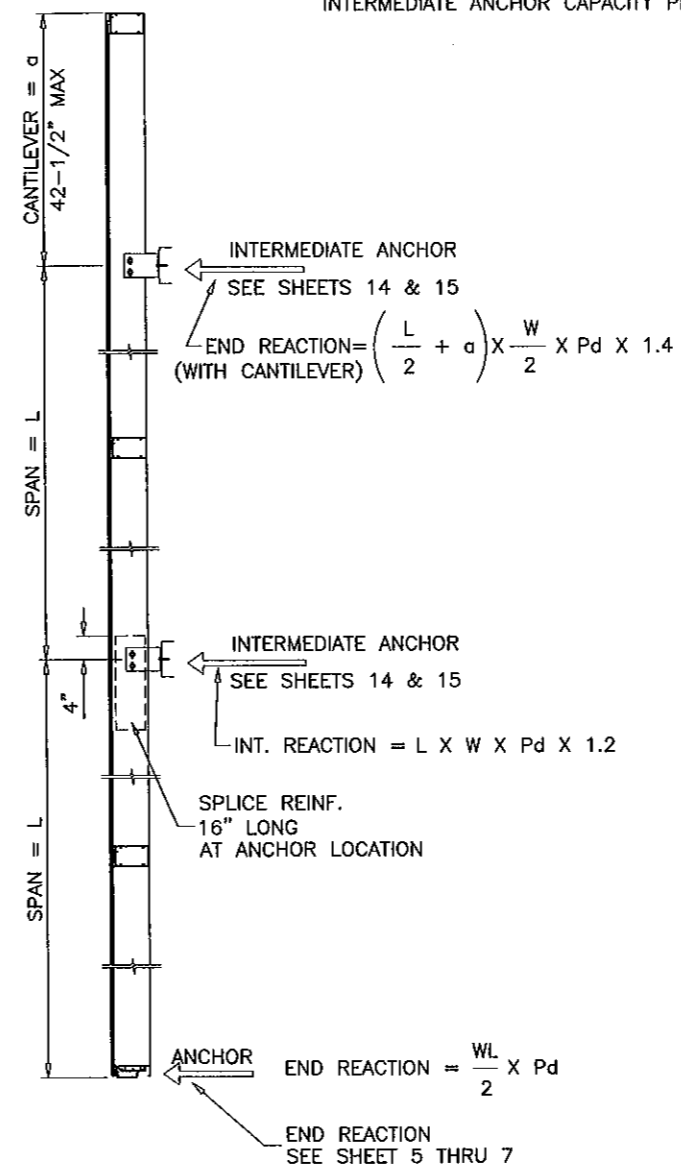
MULLION LOAD CAPACITY - PSF
MULTIPLE SPANS

AVG. MULL SPACING	SPAN = L	UNREINFORCED	ALUM REINF.
		EXT.(+)/INT.(-)	EXT.(+)/INT.(-)
36"	120"	120.0	120.0
42"		120.0	120.0
48"		120.0	120.0
54"		120.0	120.0
60"		116.7	120.0
66"		106.1	120.0
72"	97.2	112.0	
36"	126"	120.0	120.0
42"		120.0	120.0
48"		120.0	120.0
54"		120.0	120.0
60"		110.1	120.0
66"		100.1	116.4
72"	91.7	106.7	
36"	132"	120.0	120.0
42"		120.0	120.0
48"		120.0	120.0
54"		116.0	120.0
60"		104.4	120.0
66"		94.9	111.1
72"	87.0	101.8	
36"	138"	120.0	120.0
42"		120.0	120.0
48"		120.0	120.0
54"		110.3	120.0
60"		99.3	116.9
66"		90.3	106.2
72"	82.8	97.4	
36"	144"	120.0	120.0
42"		120.0	120.0
48"		118.4	120.0
54"		105.2	120.0
60"		94.7	112.0
66"		86.1	101.8
36"	150"	120.0	120.0
42"		120.0	120.0
48"		113.2	120.0
54"		100.6	119.5
60"		90.5	107.5
66"		82.3	97.7
36"	156"	120.0	120.0
42"		120.0	120.0
48"		108.4	120.0
54"		96.3	114.9
60"		86.7	103.4
36"		162"	120.0
42"	118.9		120.0
48"	104.0		120.0
54"	92.5		110.6
60"	83.2		99.6
36"	168"		120.0
42"		113.6	120.0
48"		99.4	120.0
54"		88.4	106.7
60"		79.5	96.0



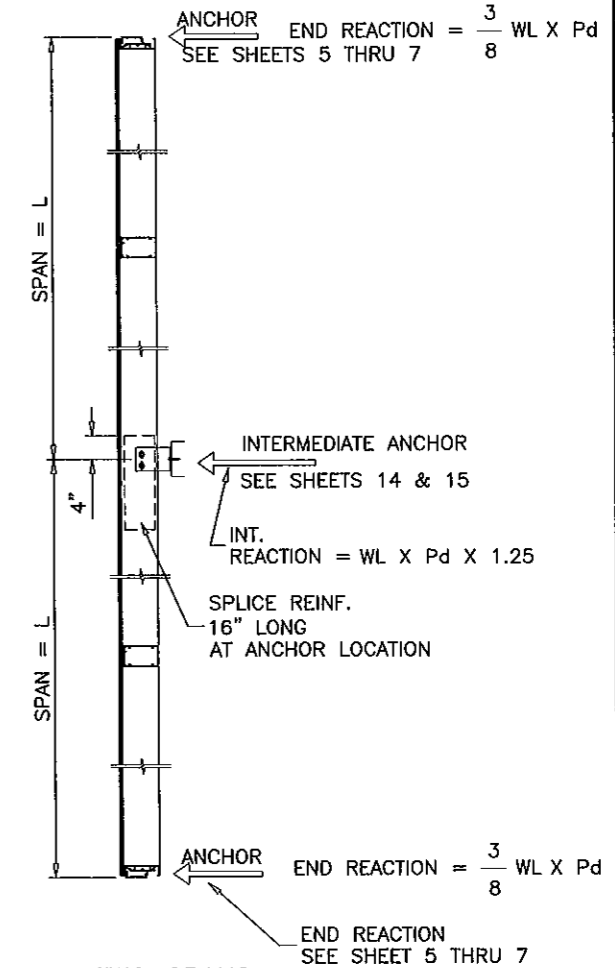
MULTIPLE SPANS

MULTIPLE SPANS WITH OR WITHOUT CANTILEVER
USE TABLE ON THIS SHEET.



TWO SPANS

TWO SPANS WITH CANTILEVER
AND WITHOUT SPLICE/EXPANSION JOINT
USE TABLE ON THIS SHEET.

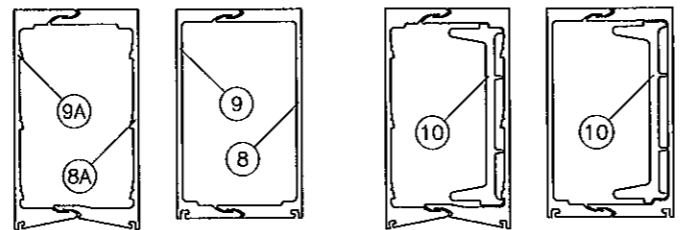


TWO SPANS

TWO SPANS WITHOUT CANTILEVER
AND WITHOUT SPLICE/EXPANSION JOINT
USE TABLE ON THIS SHEET.

UNEQUAL SPANS TO BE CHECKED ON JOB TO JOB BASIS

END REACTIONS MAY CHANGE WITH LOCATION OF
EXPANSION JOINT AND LENGTH OF CANTILEVER
WORST CONDITION SHOWN.



UNREINFORCED ALUM REINF.
L = MULL LENGTH - 4"

PRODUCT REVISED
as complying with the Florida
Building Code
Acceptance No 10-1213-10
Expiration Date MAR 02, 2016
by Ishaq I. Chaudhry
Internal Code Product Control

Engr: JAVAD AHMAD
CIVIL
FLA. PE # 70592
C.A.N. 3538
MAY 26 2011

INTERMEDIATE ANCHOR WIND AND DEAD LOAD MUST NOT EXCEED
INTERMEDIATE ANCHOR CAPACITY PER SHEETS 14 & 15.

af c
AL-FAROOQ CORPORATION
ENGINEERS & PRODUCT DEVELOPMENT
1235 S.W. 87 AVE
MIAMI, FLORIDA 33174
TEL (305) 264-8100 FAX (305) 262-6978
STORE \W04-78CTC

PRO-TECH 7SG ALUM CURTAIN WALL SYSTEM (L.M.I.)
CRAWFORD TRACEY CORPORATION
3301 SW 13TH DRIVE
DEERFIELD BEACH, FL. 33442-8101
TEL (954) 698-8888 FAX (954) 698-8889

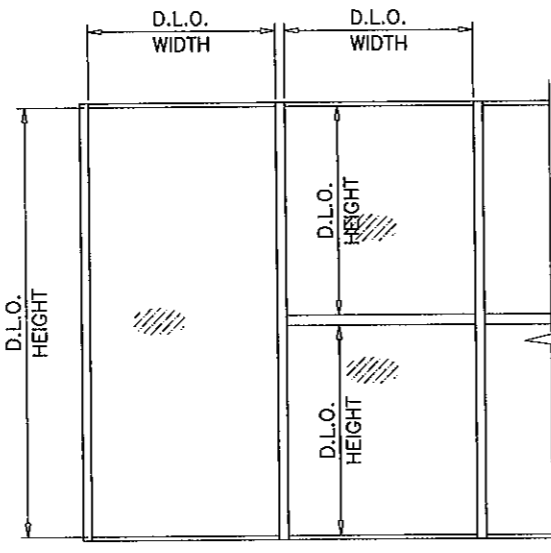
revisions:	no.	date	by	description
	D	06.19.08		REV. PER BCCO COMMENTS
	E	08.19.08		NO CHANGE THIS SHEET
	F	03.02.11		REV. PER BCCO COMMENTS
	G	05.10.11		REV. PER BNC COMMENTS

date: 05-25-04
scale: 3/8"=1'-0"
dr. by: HAMID
chk. by:

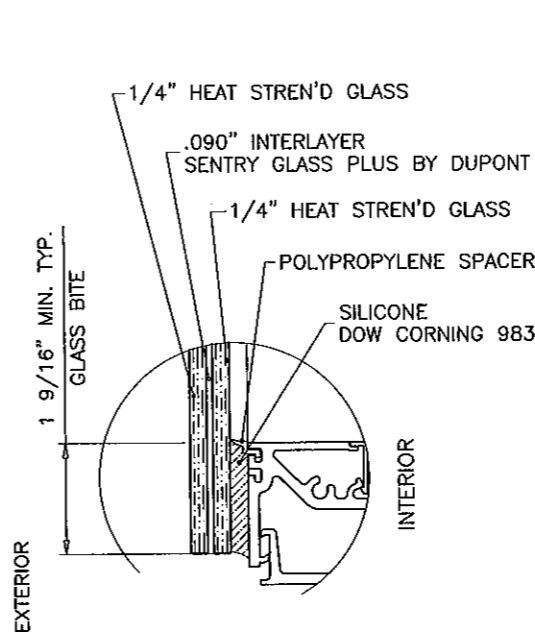
drawing no.
W04-78
sheet 3 of 17

GLASS LOAD CAPACITY - PSF					
NOMINAL DIMS.		GLASS TYPE 'A'	GLASS TYPE 'A1'	GLASS TYPE 'B' & 'B1'	
D.L.O. WIDTH	D.L.O. HEIGHT	EXT. (+) INT. (-)	EXT. (+) INT. (-)	EXT. (+) INT. (-)	
42"	78"	120.0	120.0	100.0	
45"		120.0	120.0	100.0	
48"		120.0	120.0	100.0	
51"		120.0	120.0	100.0	
54"		120.0	120.0	100.0	
57"		120.0	120.0	100.0	
60"		120.0	120.0	100.0	
63"		120.0	120.0	100.0	
66"		120.0	120.0	100.0	
69"		119.2	119.2	100.0	
72"		114.4	114.4	100.0	
75"		110.1	110.1	100.0	
78"		106.0	106.0	100.0	
42"		84"	120.0	120.0	100.0
45"	120.0		120.0	100.0	
48"	120.0		120.0	100.0	
51"	120.0		120.0	100.0	
54"	120.0		120.0	100.0	
57"	120.0		120.0	100.0	
60"	120.0		120.0	100.0	
63"	120.0		120.0	100.0	
66"	120.0		120.0	100.0	
69"	119.2		119.2	100.0	
72"	114.4		114.4	100.0	
75"	110.1		110.1	100.0	
78"	106.0		106.0	100.0	
42"	90"		120.0	120.0	100.0
45"		120.0	120.0	100.0	
48"		120.0	120.0	100.0	
51"		120.0	120.0	100.0	
54"		120.0	120.0	100.0	
57"		120.0	120.0	100.0	
60"		120.0	120.0	100.0	
63"		120.0	120.0	100.0	
66"		118.5	120.0	100.0	
69"		115.1	119.2	100.0	
72"		111.9	114.4	100.0	
42"		96"	120.0	120.0	100.0
45"			120.0	120.0	100.0
48"			120.0	120.0	100.0
51"	120.0		120.0	100.0	
54"	120.0		120.0	100.0	
57"	120.0		120.0	100.0	
60"	117.2		120.0	100.0	
63"	113.5		120.0	100.0	
66"	110.3		116.0	100.0	
42"	102"		120.0	120.0	100.0
45"			120.0	120.0	100.0
48"			120.0	120.0	100.0
51"			120.0	120.0	100.0
54"			117.7	120.0	100.0
57"		113.5	120.0	100.0	
60"		109.4	116.0	100.0	
63"		105.9	112.0	100.0	

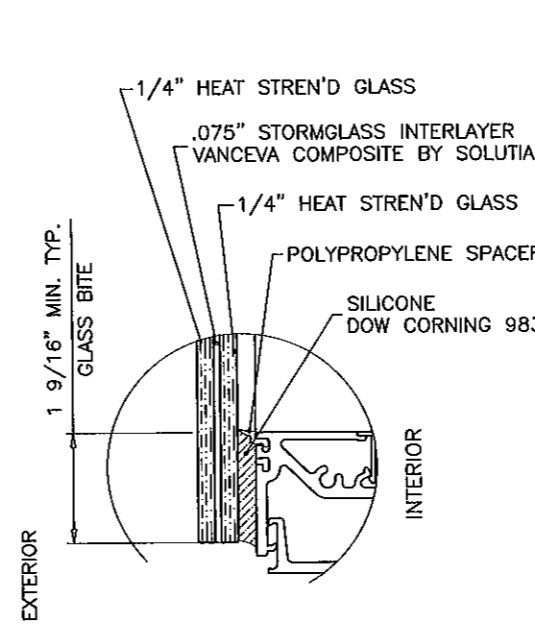
GLASS LOAD CAPACITY - PSF							
NOMINAL DIMS.		GLASS TYPE 'A'	GLASS TYPE 'A1'	GLASS TYPE 'B' & 'B1'			
D.L.O. WIDTH	D.L.O. HEIGHT	EXT. (+) INT. (-)	EXT. (+) INT. (-)	EXT. (+) INT. (-)			
42"	108"	120.0	120.0	100.0			
45"		120.0	120.0	100.0			
48"		120.0	120.0	100.0			
51"		116.9	120.0	100.0			
54"		111.3	119.0	100.0			
57"		106.4	113.0	100.0			
60"		102.5	109.0	100.0			
42"	114"	120.0	120.0	100.0			
45"		120.0	120.0	100.0			
48"		118.4	120.0	100.0			
51"		111.8	119.0	100.0			
54"		105.5	112.0	100.0			
57"		100.3	107.0	100.0			
42"		120"	120.0	120.0	100.0		
45"	120.0		120.0	100.0			
48"	114.3		120.0	100.0			
51"	106.6		115.0	100.0			
54"	100.3		108.0	100.0			
42"	126"		120.0	120.0	100.0		
45"			118.7	120.0	100.0		
48"		109.9	119.0	100.0			
51"		102.4	111.0	100.0			
42"		132"	120.0	120.0	100.0		
45"			115.2	120.0	100.0		
48"			106.3	116.0	100.0		
42"	138"		120.0	120.0	100.0		
45"			112.9	120.0	100.0		
42"			144"	120.0	120.0	100.0	
45"				111.6	120.0	100.0	
42"		150"		120.0	120.0	100.0	
56-1/2"				116-1/2"	100.0	106.0	100.0



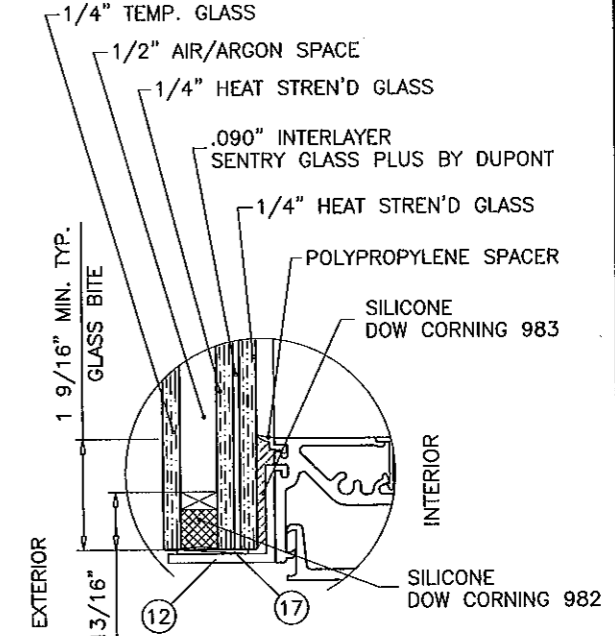
NOTE:
GLASS CAPACITIES ON THIS SHEET ARE
BASED ON ASTM E1300-04 (3 SEC. GUSTS).



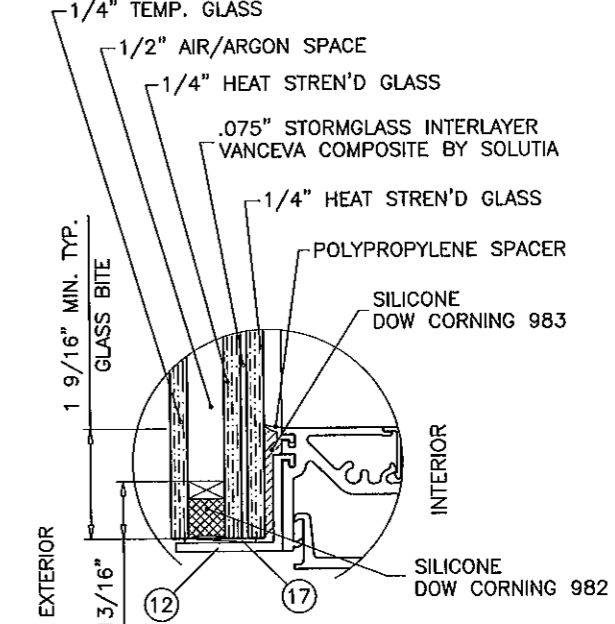
GLASS TYPE 'A'
9/16" OVERALL LAM. GLASS



GLASS TYPE 'B'
9/16" OVERALL LAM. GLASS



GLASS TYPE 'A1'
1-5/16" OVERALL INSUL. LAM. GLASS



GLASS TYPE 'B1'
1-5/16" OVERALL INSUL. LAM. GLASS

GLAZING OPTIONS

PRODUCT REVISED
as complying with the Florida
Building Code
Acceptance No. 10-1213-10
Expiration Date 2/28/02, 2016
By: *Yung I. Chaudhry*
Miami Dade Product Control

NOTE:
OPTION OF .019" CERAMIC FRIT ON ROOM SIDE SURFACE
OF INNER PANE GLASS.
MAX. GLASS AREA LIMITED TO 22.2 SQ. FT. WITH
ASPECT RATIO EQUAL OR LESS THAN 5.

Engr: JAVAD AHMAD
CIVIL
FLA. PE # 70592
C.A.N. 3538

MAY 16 2011

af c

AL-FAROOQ CORPORATION
ENGINEERS & PRODUCT DEVELOPMENT
12335 S.W. 87 AVE
MIAMI, FLORIDA 33174
TEL. (305) 264-8100 FAX. (305) 262-6978
STORE W04-78CTC

PRO-TECH TSC ALUM CURTAIN WALL SYSTEM (L.M.I.)

CRAWFORD TRACEY CORPORATION
3301 SW 13TH DRIVE
DEERFIELD BEACH, FL. 33442-8101
TEL. (954) 698-6888 FAX. (954) 698-6889

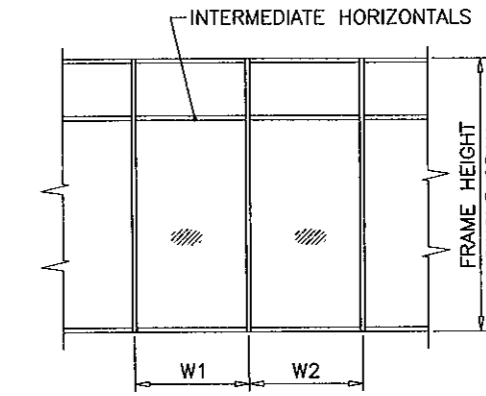
no.	date	description
D	06.19.08	REV. PER BCCO COMMENTS
E	08.19.08	REV. PER BCCO COMMENTS
F	10.30.11	REV. PER BCCO COMMENTS
G	05.10.11	REV. PER BNC COMMENTS

date: 05-25-04
scale: 3/8" = 1"
dr. by: HAMID
chk. by:

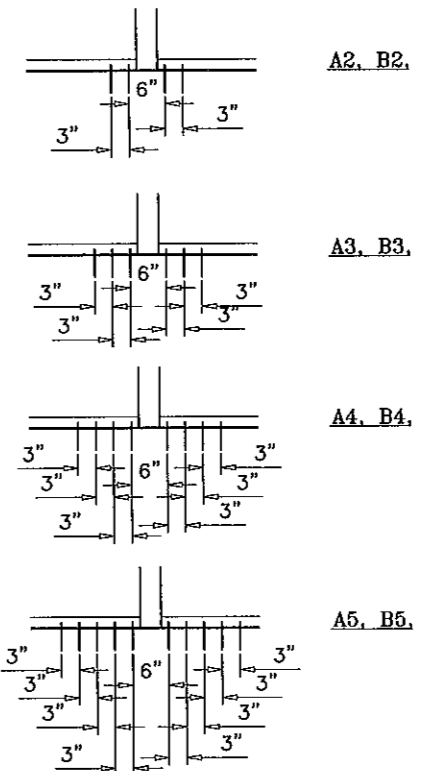
drawing no. **W04-78**
sheet 4 of 17

ANCHOR LOAD CAPACITY - PSF EXT.(+) & INT.(-)									
NOMINAL DIMS.		ANCHORS TYPE 'A'				ANCHORS TYPE 'B'			
WIDTH (W)	FRAME HEIGHT	A2	A3	A4	A5	B2	B3	B4	B5
36"	120"	84.8	120.0	120.0	120.0	96.0	120.0	120.0	120.0
39"		78.3	117.4	120.0	120.0	88.6	120.0	120.0	120.0
42"		72.7	109.0	120.0	120.0	82.3	120.0	120.0	120.0
45"		67.8	101.8	120.0	120.0	76.8	115.2	120.0	120.0
48"		63.6	95.4	112.7	120.0	72.0	108.0	120.0	120.0
51"		59.9	89.8	106.1	120.0	67.8	101.6	120.0	120.0
54"		56.5	84.8	100.2	120.0	64.0	96.0	120.0	120.0
57"		53.6	80.3	94.9	120.0	60.6	90.9	120.0	120.0
60"		50.9	76.3	90.2	120.0	57.6	86.4	115.2	120.0
63"		48.5	72.7	85.9	120.0	54.9	82.3	109.7	120.0
66"		46.3	69.4	82.0	115.6	52.4	78.5	104.7	120.0
69"		44.2	66.4	78.4	110.6	50.1	75.1	100.2	120.0
72"	42.4	63.6	75.1	106.0	48.0	72.0	96.0	120.0	
36"	126"	80.8	120.0	120.0	120.0	91.4	120.0	120.0	120.0
39"		74.5	111.8	120.0	120.0	84.4	120.0	120.0	120.0
42"		69.2	103.8	120.0	120.0	78.4	117.6	120.0	120.0
45"		64.6	96.9	114.5	120.0	73.1	109.7	120.0	120.0
48"		60.6	90.9	107.3	120.0	68.6	102.9	120.0	120.0
51"		57.0	85.5	101.0	120.0	64.5	96.8	120.0	120.0
54"		53.8	80.8	95.4	120.0	61.0	91.4	120.0	120.0
57"		51.0	76.5	90.4	120.0	57.7	86.6	115.5	120.0
60"		48.5	72.7	85.9	120.0	54.9	82.3	109.7	120.0
63"		46.1	69.2	81.8	115.4	52.2	78.4	104.5	120.0
66"		44.1	66.1	78.1	110.1	49.9	74.8	99.7	120.0
69"		42.1	63.2	74.7	105.3	47.7	71.6	95.4	119.3
72"	40.4	60.6	71.6	101.0	45.7	68.6	91.4	114.3	
36"	132"	77.1	115.6	120.0	120.0	87.3	120.0	120.0	120.0
39"		71.2	106.7	120.0	120.0	80.6	120.0	120.0	120.0
42"		66.1	99.1	117.1	120.0	74.8	112.2	120.0	120.0
45"		61.7	92.5	109.3	120.0	69.8	104.7	120.0	120.0
48"		57.8	86.7	102.5	120.0	65.5	98.2	120.0	120.0
51"		54.4	81.6	96.4	120.0	61.6	92.4	120.0	120.0
54"		51.4	77.1	91.1	120.0	58.2	87.3	116.4	120.0
57"		48.7	73.0	86.3	120.0	55.1	82.7	110.2	120.0
60"		46.3	69.4	82.0	115.6	52.4	78.5	104.7	120.0
63"		44.1	66.1	78.1	110.1	49.9	74.8	99.7	120.0
66"		42.0	63.1	74.5	105.1	47.6	71.4	95.2	119.0
69"		40.2	60.3	71.3	100.6	45.5	68.3	91.1	113.8
72"	38.5	57.8	68.3	96.4	43.6	65.5	87.3	109.1	
36"	138"	73.7	110.6	120.0	120.0	83.5	120.0	120.0	120.0
39"		68.1	102.1	120.0	120.0	77.1	115.6	120.0	120.0
42"		63.2	94.8	112.0	120.0	71.6	107.3	120.0	120.0
45"		59.0	88.5	104.5	120.0	66.8	100.2	120.0	120.0
48"		55.3	83.0	98.0	120.0	62.6	93.9	120.0	120.0
51"		52.1	78.1	92.2	120.0	58.9	88.4	117.9	120.0
54"		49.2	73.7	87.1	120.0	55.7	83.5	111.3	120.0
57"		46.6	69.9	82.5	116.4	52.7	79.1	105.4	120.0
60"		44.2	66.4	78.4	110.6	50.1	75.1	100.2	120.0
63"		42.1	63.2	74.7	105.3	47.7	71.6	95.4	119.3
66"		40.2	60.3	71.3	100.6	45.5	68.3	91.1	113.8
69"		38.5	57.7	68.2	96.2	43.6	65.3	87.1	108.9
72"	36.9	55.3	65.3	92.2	41.7	62.6	83.5	104.3	

ANCHOR LOAD CAPACITY - PSF EXT.(+) & INT.(-)										
NOMINAL DIMS.		ANCHORS TYPE 'A'				ANCHORS TYPE 'B'				
WIDTH (W)	FRAME HEIGHT	A2	A3	A4	A5	B2	B3	B4	B5	
36"	144"	70.7	106.0	120.0	120.0	80.0	120.0	120.0	120.0	
39"		65.2	97.8	115.6	120.0	73.8	110.8	120.0	120.0	
42"		60.6	90.9	107.3	120.0	68.6	102.9	120.0	120.0	
45"		56.5	84.8	100.2	120.0	64.0	96.0	120.0	120.0	
48"		53.0	79.5	93.9	120.0	60.0	90.0	120.0	120.0	
51"		49.9	74.8	88.4	120.0	56.5	84.7	112.9	120.0	
54"		47.1	70.7	83.5	117.8	53.3	80.0	106.7	120.0	
57"		44.6	66.9	79.1	111.6	50.5	75.8	101.1	120.0	
60"		42.4	63.6	75.1	106.0	48.0	72.0	96.0	120.0	
63"		40.4	60.6	71.6	101.0	45.7	68.6	91.4	114.3	
66"		38.5	57.8	68.3	96.4	43.6	65.5	87.3	109.1	
69"		36.9	55.3	65.3	92.2	41.7	62.6	83.5	104.3	
36"	150"	67.8	101.8	120.0	120.0	76.8	115.2	120.0	120.0	
39"		62.6	93.9	111.0	120.0	70.9	106.3	120.0	120.0	
42"		58.1	87.2	103.0	120.0	65.8	98.7	120.0	120.0	
45"		54.3	81.4	96.2	120.0	61.4	92.2	120.0	120.0	
48"		50.9	76.3	90.2	120.0	57.6	86.4	115.2	120.0	
51"		47.9	71.8	84.9	119.7	54.2	81.3	108.4	120.0	
54"		45.2	67.8	80.1	113.1	51.2	76.8	102.4	120.0	
57"		42.8	64.3	75.9	107.1	48.5	72.8	97.0	120.0	
60"		40.7	61.1	72.1	101.8	46.1	69.1	92.2	115.2	
63"		38.8	58.1	68.7	96.9	43.9	65.8	87.8	109.7	
66"		37.0	55.5	65.6	92.5	41.9	62.8	83.8	104.7	
36"		156"	65.2	97.8	115.6	120.0	73.8	110.8	120.0	120.0
39"	60.2		90.3	106.7	120.0	68.2	102.2	120.0	120.0	
42"	55.9		83.9	99.1	120.0	63.3	94.9	120.0	120.0	
45"	52.2		78.3	92.5	120.0	59.1	88.6	118.2	120.0	
48"	48.9		73.4	86.7	120.0	55.4	83.1	110.8	120.0	
51"	46.0		69.1	81.6	115.1	52.1	78.2	104.3	120.0	
54"	43.5		65.2	77.1	108.7	49.2	73.8	98.5	120.0	
57"	41.2		61.8	73.0	103.0	46.6	70.0	93.3	116.6	
60"	39.1		58.7	69.4	97.8	44.3	66.5	88.6	110.8	
63"	37.3		55.9	66.1	93.2	42.2	63.3	84.4	105.5	
36"	162"		62.8	94.2	111.3	120.0	71.1	106.7	120.0	120.0
39"			58.0	87.0	102.7	120.0	65.6	98.5	120.0	120.0
42"		53.8	80.8	95.4	120.0	61.0	91.4	120.0	120.0	
45"		50.3	75.4	89.0	120.0	56.9	85.3	113.8	120.0	
48"		47.1	70.7	83.5	117.8	53.3	80.0	106.7	120.0	
51"		44.3	66.5	78.6	110.8	50.2	75.3	100.4	120.0	
54"		41.9	62.8	74.2	104.7	47.4	71.1	94.8	118.5	
57"		39.7	59.5	70.3	99.2	44.9	67.4	89.8	112.3	
60"		37.7	56.5	66.8	94.2	42.7	64.0	85.3	106.7	
36"		168"	60.6	90.9	107.3	120.0	68.6	102.9	120.0	120.0
39"			55.9	83.9	99.1	120.0	63.3	94.9	120.0	120.0
42"			51.9	77.9	92.0	120.0	58.8	88.2	117.6	120.0
45"	48.5		72.7	85.9	120.0	54.9	82.3	109.7	120.0	
48"	45.4		68.1	80.5	113.6	51.4	77.1	102.9	120.0	
51"	42.8		64.1	75.8	106.9	48.4	72.6	96.8	120.0	
54"	40.4		60.6	71.6	101.0	45.7	68.6	91.4	114.3	
57"	38.3		57.4	67.8	95.6	43.3	65.0	86.6	108.3	
60"	36.3		54.5	64.4	90.9	41.1	61.7	82.3	102.9	



$$\text{WIDTH (W)} = \frac{W1 + W2}{2}$$



ANCHORS TYPES A&B: SEE SHEET 9 FOR DESCRIPTION

- A2 = (2) ANCHORS TYPE 'A' AT EACH SIDE OF MULLION
- A3 = (3) ANCHORS TYPE 'A' AT EACH SIDE OF MULLION
- A4 = (4) ANCHORS TYPE 'A' AT EACH SIDE OF MULLION
- A5 = (5) ANCHORS TYPE 'A' AT EACH SIDE OF MULLION
- B2 = (2) ANCHORS TYPE 'B' AT EACH SIDE OF MULLION
- B3 = (3) ANCHORS TYPE 'B' AT EACH SIDE OF MULLION
- B4 = (4) ANCHORS TYPE 'B' AT EACH SIDE OF MULLION
- B5 = (5) ANCHORS TYPE 'B' AT EACH SIDE OF MULLION

ALL OTHER ANCHORS TO BE SPACED AS PER ELEVATION.

Engr: JAVAD AHMAD
CIVIL
FLA. PE # 70592
C.A.N. 3538

MAY 18 2011

PRODUCT REVISED
as complying with the Florida
Building Code
Acceptance No 10-1213-10
Expiration Date 1/18/2016

by: *Ishak L. Khan*
Special Code Product Control

afC

AL-FAROOQ CORPORATION
ENGINEERS & PRODUCT DEVELOPMENT
1235 S.W. 87 AVE
MIAMI, FLORIDA 33174
TEL: (305) 264-8100 FAX: (305) 262-6978
STORE \W04-78CTC

PRO-TECH 7SG ALUM CURTAIN WALL SYSTEM (L.M.I.)

CRAWFORD TRACEY CORPORATION
3301 SW 13TH DRIVE
DEERFIELD BEACH, FL. 33442-8101
TEL: (954) 698-6888 FAX: (954) 698-6889

NO	DATE	BY	DESCRIPTION
D	06.19.08		REV. PER BOCO COMMENTS
E	08.19.08		NO CHANGE THIS SHEET
F	03.02.11		REV. PER BOCO COMMENTS
G	05.10.11		NO CHANGE THIS SHEET

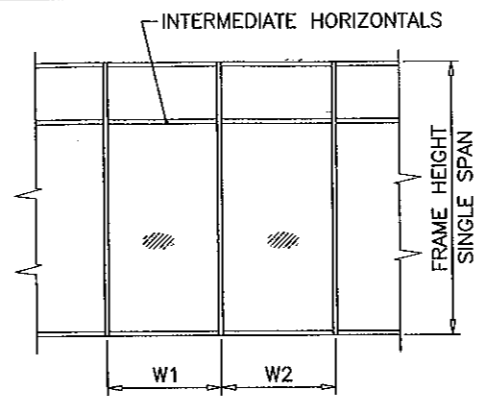
date: 05-25-04 scale: 3/8"=1'-0" dr. by: HAMID chk. by:

drawing no. **W04-78**

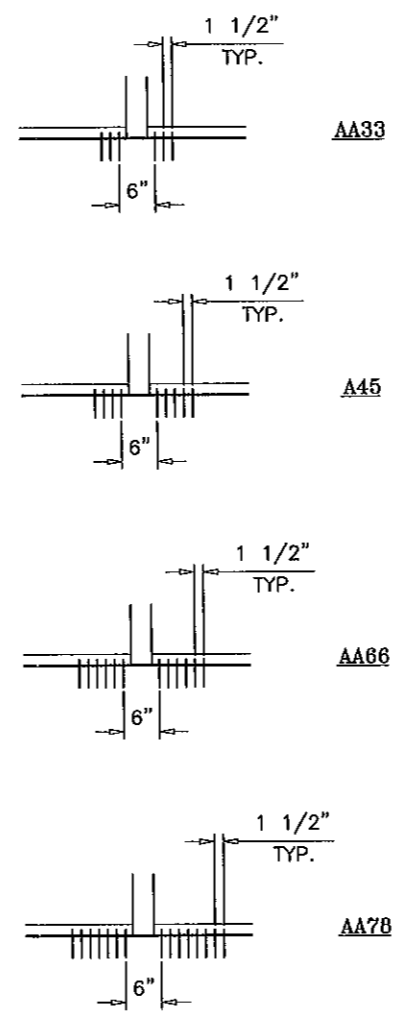
sheet 5 of 17

ANCHOR LOAD CAPACITY - PSF EXT.(+) & INT.(-)					
NOMINAL DIMS.		ANCHORS TYPE 'AA'			
WIDTH (W)	FRAME HEIGHT	AA33	AA45	AA66	AA76
36"	120"	84.8	120.0	120.0	120.0
39"		78.3	117.4	120.0	120.0
42"		72.7	109.0	120.0	120.0
45"		67.8	101.8	120.0	120.0
48"		63.6	95.4	112.7	120.0
51"		59.9	89.8	106.1	120.0
54"		56.5	84.8	100.2	120.0
57"		53.6	80.3	94.9	120.0
60"		50.9	76.3	90.2	120.0
63"		48.5	72.7	85.9	120.0
66"		46.3	69.4	82.0	115.6
69"		44.2	66.4	78.4	110.6
72"		42.4	63.6	75.1	106.0
36"		126"	80.8	120.0	120.0
39"	74.5		111.8	120.0	120.0
42"	69.2		103.8	120.0	120.0
45"	64.6		96.9	114.5	120.0
48"	60.6		90.9	107.3	120.0
51"	57.0		85.5	101.0	120.0
54"	53.8		80.8	95.4	120.0
57"	51.0		76.5	90.4	120.0
60"	48.5		72.7	85.9	120.0
63"	46.1		69.2	81.8	115.4
66"	44.1		66.1	78.1	110.1
69"	42.1		63.2	74.7	105.3
72"	40.4		60.6	71.6	101.0
36"	132"		77.1	115.6	120.0
39"		71.2	106.7	120.0	120.0
42"		66.1	99.1	117.1	120.0
45"		61.7	92.5	109.3	120.0
48"		57.8	86.7	102.5	120.0
51"		54.4	81.6	96.4	120.0
54"		51.4	77.1	91.1	120.0
57"		48.7	73.0	86.3	120.0
60"		46.3	69.4	82.0	115.6
63"		44.1	66.1	78.1	110.1
66"		42.0	63.1	74.5	105.1
69"		40.2	60.3	71.3	100.6
72"		38.5	57.8	68.3	96.4
36"		138"	73.7	110.6	120.0
39"	68.1		102.1	120.0	120.0
42"	63.2		94.8	112.0	120.0
45"	59.0		88.5	104.5	120.0
48"	55.3		83.0	98.0	120.0
51"	52.1		78.1	92.2	120.0
54"	49.2		73.7	87.1	120.0
57"	46.6		69.9	82.5	116.4
60"	44.2		66.4	78.4	110.6
63"	42.1		63.2	74.7	105.3
66"	40.2		60.3	71.3	100.6
69"	38.5		57.7	68.2	96.2
72"	36.9		55.3	65.3	92.2

ANCHOR LOAD CAPACITY - PSF EXT.(+) & INT.(-)						
NOMINAL DIMS.		ANCHORS TYPE 'AA'				
WIDTH (W)	FRAME HEIGHT	AA33	AA45	AA66	AA76	
36"	144"	70.7	106.0	120.0	120.0	
39"		65.2	97.8	115.6	120.0	
42"		60.6	90.9	107.3	120.0	
45"		56.5	84.8	100.2	120.0	
48"		53.0	79.5	93.9	120.0	
51"		49.9	74.8	88.4	120.0	
54"		47.1	70.7	83.5	117.8	
57"		44.6	66.9	79.1	111.6	
60"		42.4	63.6	75.1	106.0	
63"		40.4	60.6	71.6	101.0	
66"		38.5	57.8	68.3	96.4	
69"		36.9	55.3	65.3	92.2	
36"		150"	67.8	101.8	120.0	120.0
39"			62.6	93.9	111.0	120.0
42"	58.1		87.2	103.0	120.0	
45"	54.3		81.4	96.2	120.0	
48"	50.9		76.3	90.2	120.0	
51"	47.9		71.8	84.9	119.7	
54"	45.2		67.8	80.1	113.1	
57"	42.8		64.3	75.9	107.1	
60"	40.7		61.1	72.1	101.8	
63"	38.8		58.1	68.7	96.9	
66"	37.0		55.5	65.6	92.5	
36"	156"		65.2	97.8	115.6	120.0
39"			60.2	90.3	106.7	120.0
42"			55.9	83.9	99.1	120.0
45"		52.2	78.3	92.5	120.0	
48"		48.9	73.4	86.7	120.0	
51"		46.0	69.1	81.6	115.1	
54"		43.5	65.2	77.1	108.7	
57"		41.2	61.8	73.0	103.0	
60"		39.1	58.7	69.4	97.8	
63"		37.3	55.9	66.1	93.2	
36"		162"	62.8	94.2	111.3	120.0
39"			58.0	87.0	102.7	120.0
42"			53.8	80.8	95.4	120.0
45"			50.3	75.4	89.0	120.0
48"	47.1		70.7	83.5	117.8	
51"	44.3		66.5	78.6	110.8	
54"	41.9		62.8	74.2	104.7	
57"	39.7		59.5	70.3	99.2	
60"	37.7		56.5	66.8	94.2	
36"	168"		60.6	90.9	107.3	120.0
39"			55.9	83.9	99.1	120.0
42"			51.9	77.9	92.0	120.0
45"			48.5	72.7	85.9	120.0
48"			45.4	68.1	80.5	113.6
51"		42.8	64.1	75.8	106.9	
54"		40.4	60.6	71.6	101.0	
57"		38.3	57.4	67.8	95.6	
60"		36.3	54.5	64.4	90.9	



$$\text{WIDTH (W)} = \frac{W1 + W2}{2}$$



ANCHORS TYPES AA (INTO 2BY BUCKS): SEE SHEET 9 FOR DESCRIPTION

- AA33= (6) ANCHORS TYPE 'AA' AT MULLION ENDS
- AA45= (9) ANCHORS TYPE 'AA' AT MULLION ENDS
- AA66= (12) ANCHORS TYPE 'AA' AT MULLION ENDS
- AA76= (15) ANCHORS TYPE 'AA' AT MULLION ENDS

ALL OTHER ANCHORS TO BE SPACED AS PER ELEVATION.

Engr: JAVAD AHMAD
CIVIL
FLA. PE # 70592
C.A.N. 3538
MAY 18 2011

PRODUCT REVISED
as complying with the Florida
Building Code
Acceptance No. 10-1213-10
Expiration Date: MAR 02, 2016
By: Khas I. Handa
Initial Date Product Control

af c
AL-FAROOQ CORPORATION
ENGINEERS & PRODUCT DEVELOPMENT
1235 S.W. 87 AVE
MIAMI, FLORIDA 33174
TEL. (305) 264-8100 FAX. (305) 262-6978
STORE/WO4-78CTC

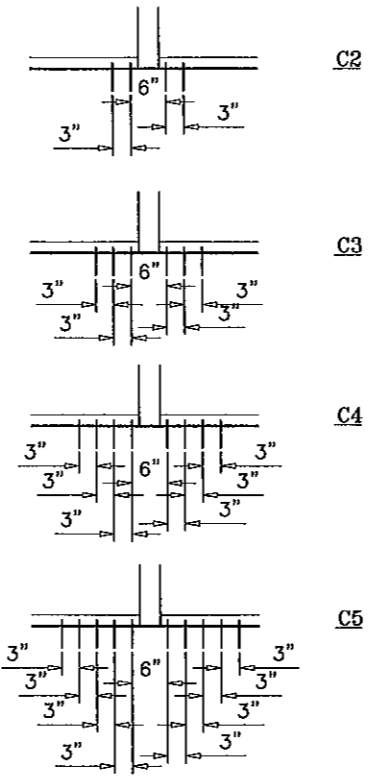
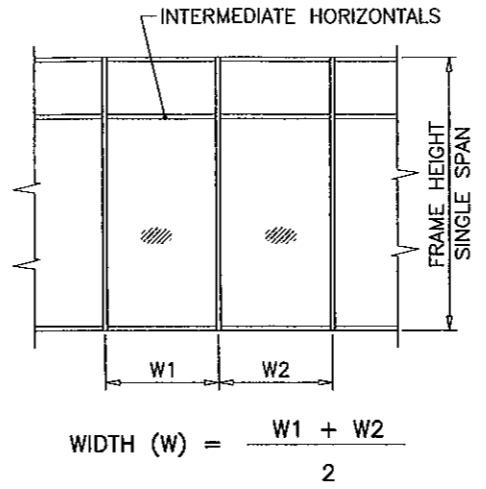
PRO-TECH 75G ALUM CURTAIN WALL SYSTEM (L.M.I.)
CRAWFORD TRACEY CORPORATION
3301 SW 13TH DRIVE
DEERFIELD BEACH, FL. 33442-8101
TEL. (954) 698-6888 FAX. (954) 698-6889

no	date	description	REV. PER BCCO COMMENTS
E	08.19.08		REV. PER BCCO COMMENTS
F	03.02.11		REV. PER BCCO COMMENTS
G	05.10.11		NO CHANGE THIS SHEET

date: 05-25-04
scale: 3/8" = 1'-0"
dr. by: HAMID
chk. by:
drawing no.
WO4-78
sheet 5.1 of 17

ANCHOR LOAD CAPACITY - PSF EXT.(+) & INT.(-)					
NOMINAL DIMS.		ANCHORS TYPE 'C'			
WIDTH (W)	FRAME HEIGHT	C2	C3	C4	C5
36"	120"	120.0	120.0	120.0	120.0
39"		120.0	120.0	120.0	120.0
42"		114.3	120.0	120.0	120.0
45"		106.7	120.0	120.0	120.0
48"		100.0	120.0	120.0	120.0
51"		94.1	120.0	120.0	120.0
54"		88.9	120.0	120.0	120.0
57"		84.2	120.0	120.0	120.0
60"		80.0	120.0	120.0	120.0
63"		76.2	114.3	120.0	120.0
66"		72.7	109.1	120.0	120.0
69"		69.6	104.3	120.0	120.0
72"	66.7	100.0	120.0	120.0	
36"	126"	120.0	120.0	120.0	120.0
39"		117.2	120.0	120.0	120.0
42"		108.8	120.0	120.0	120.0
45"		101.6	120.0	120.0	120.0
48"		95.2	120.0	120.0	120.0
51"		89.6	120.0	120.0	120.0
54"		84.7	120.0	120.0	120.0
57"		80.2	120.0	120.0	120.0
60"		76.2	114.3	120.0	120.0
63"		72.6	108.8	120.0	120.0
66"		69.3	103.9	120.0	120.0
69"		66.3	99.4	120.0	120.0
72"	63.5	95.2	120.0	120.0	
36"	132"	120.0	120.0	120.0	120.0
39"		111.9	120.0	120.0	120.0
42"		103.9	120.0	120.0	120.0
45"		97.0	120.0	120.0	120.0
48"		90.9	120.0	120.0	120.0
51"		85.6	120.0	120.0	120.0
54"		80.8	120.0	120.0	120.0
57"		76.6	114.8	120.0	120.0
60"		72.7	109.1	120.0	120.0
63"		69.3	103.9	120.0	120.0
66"		66.1	99.2	120.0	120.0
69"		63.2	94.9	120.0	120.0
72"	60.6	90.9	120.0	120.0	
36"	138"	115.9	120.0	120.0	120.0
39"		107.0	120.0	120.0	120.0
42"		99.4	120.0	120.0	120.0
45"		92.8	120.0	120.0	120.0
48"		87.0	120.0	120.0	120.0
51"		81.8	120.0	120.0	120.0
54"		77.3	115.9	120.0	120.0
57"		73.2	109.8	120.0	120.0
60"		69.6	104.3	120.0	120.0
63"		66.3	99.4	120.0	120.0
66"		63.2	94.9	120.0	120.0
69"		60.5	90.7	120.0	120.0
72"	58.0	87.0	115.9	120.0	

ANCHOR LOAD CAPACITY - PSF EXT.(+) & INT.(-)						
NOMINAL DIMS.		ANCHORS TYPE 'C'				
WIDTH (W)	FRAME HEIGHT	C2	C3	C4	C5	
36"	144"	111.1	120.0	120.0	120.0	
39"		102.6	120.0	120.0	120.0	
42"		95.2	120.0	120.0	120.0	
45"		88.9	120.0	120.0	120.0	
48"		83.3	120.0	120.0	120.0	
51"		78.4	117.6	120.0	120.0	
54"		74.1	111.1	120.0	120.0	
57"		70.2	105.3	120.0	120.0	
60"		66.7	100.0	120.0	120.0	
63"		63.5	95.2	120.0	120.0	
66"		60.6	90.9	120.0	120.0	
69"		58.0	87.0	115.9	120.0	
36"	150"	106.7	120.0	120.0	120.0	
39"		98.5	120.0	120.0	120.0	
42"		91.4	120.0	120.0	120.0	
45"		85.3	120.0	120.0	120.0	
48"		80.0	120.0	120.0	120.0	
51"		75.3	112.9	120.0	120.0	
54"		71.1	106.7	120.0	120.0	
57"		67.4	101.1	120.0	120.0	
60"		64.0	96.0	120.0	120.0	
63"		61.0	91.4	120.0	120.0	
66"		58.2	87.3	116.4	120.0	
36"		156"	102.6	120.0	120.0	120.0
39"	94.7		120.0	120.0	120.0	
42"	87.9		120.0	120.0	120.0	
45"	82.1		120.0	120.0	120.0	
48"	76.9		115.4	120.0	120.0	
51"	72.4		108.6	120.0	120.0	
54"	68.4		102.6	120.0	120.0	
57"	64.8		97.2	120.0	120.0	
60"	61.5		92.3	120.0	120.0	
63"	58.6		87.9	117.2	120.0	
36"	162"		98.8	120.0	120.0	120.0
39"			91.2	120.0	120.0	120.0
42"		84.7	120.0	120.0	120.0	
45"		79.0	118.5	120.0	120.0	
48"		74.1	111.1	120.0	120.0	
51"		69.7	104.6	120.0	120.0	
54"		65.8	98.8	120.0	120.0	
57"		62.4	93.6	120.0	120.0	
60"		59.3	88.9	118.5	120.0	
36"		168"	95.2	120.0	120.0	120.0
39"			87.9	120.0	120.0	120.0
42"			81.6	120.0	120.0	120.0
45"	76.2		114.3	120.0	120.0	
48"	71.4		107.1	120.0	120.0	
51"	67.2		100.8	120.0	120.0	
54"	63.5		95.2	120.0	120.0	
57"	60.2		90.2	120.0	120.0	
60"	57.1		85.7	114.3	120.0	



ANCHORS TYPES C (INTO METAL STRUCTURES): SEE SHEET 9 FOR DESCRIPTION

- C2 = (2) ANCHORS TYPE 'C' AT EACH SIDE OF MULLION
- C3 = (3) ANCHORS TYPE 'C' AT EACH SIDE OF MULLION
- C4 = (4) ANCHORS TYPE 'C' AT EACH SIDE OF MULLION
- C5 = (5) ANCHORS TYPE 'C' AT EACH SIDE OF MULLION

ALL OTHER ANCHORS TO BE SPACED AS PER ELEVATION.

Engr: JAVAD AHMAD
CIVIL
FLA. PE # 70592
C.A.N. 3538
MAY 16 2011

af c
AL-FAROOQ CORPORATION
ENGINEERS & PRODUCT DEVELOPMENT
1235 S.W. 87 AVE
MIAMI, FLORIDA 33174
TEL. (305) 264-8100 FAX. (305) 262-6978
STORE \W04-78CTC

PRO-TECH 7SG ALUM CURTAIN WALL SYSTEM (L.M.I.)
CRAWFORD TRACEY CORPORATION
3301 SW 13TH DRIVE
DEERFIELD BEACH, FL. 33442-8101
TEL. (954) 698-6888 FAX. (954) 698-6889

NO	DATE	DESCRIPTION	REV. PER	COMMENTS
D	06.19.08			
E	08.19.08			
F	03.02.11			
G	05.10.11			

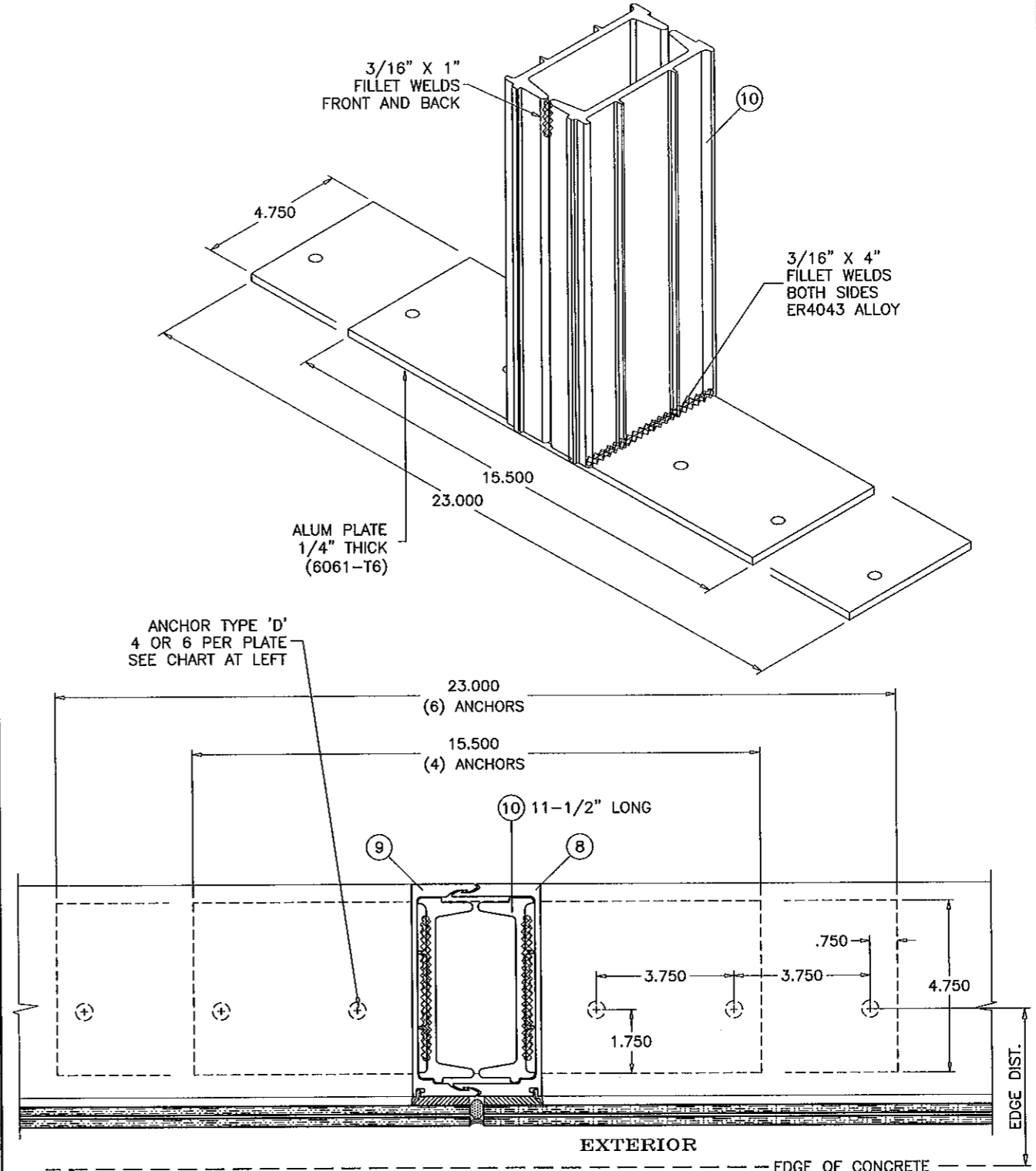
date: 05-25-04
scale: 3/8"=1'-0"
dir. by: HAMID
chk. by:

drawing no.
W04-78
sheet 6 of 17

PRODUCT REVISED
as complying with the Florida
Building Code
Acceptance No 10-1213.10
Expiration Date MAR 02, 2016
by Ishag I. Chantel
Miami Dade Product Control

ANCHOR LOAD CAPACITY - PSF EXT.(+) & INT.(-)					
NOMINAL DIMS.		4 ANCHORS PER PLATE TYPE 'D'		6 ANCHORS PER PLATE TYPE 'D'	
WIDTH (W)	FRAME HEIGHT	2-1/4" EDGE DIST.	3-1/4" EDGE DIST.	2-1/4" EDGE DIST.	3-1/4" EDGE DIST.
36"	120"	108.7	120.0	120.0	120.0
39"		100.3	120.0	120.0	120.0
42"		93.1	120.0	120.0	120.0
45"		86.9	120.0	120.0	120.0
48"		81.5	120.0	120.0	120.0
51"		76.7	120.0	115.1	120.0
54"		72.4	114.5	108.7	120.0
57"		68.6	108.5	102.9	120.0
60"		65.2	103.1	97.8	120.0
63"		62.1	98.2	93.1	120.0
66"		59.3	93.7	88.9	120.0
69"		56.7	89.6	85.0	120.0
72"	54.3	85.9	81.5	120.0	
36"	126"	103.5	120.0	120.0	120.0
39"		95.5	120.0	120.0	120.0
42"		88.7	120.0	120.0	120.0
45"		82.8	120.0	120.0	120.0
48"		77.6	120.0	116.4	120.0
51"		73.1	115.5	109.6	120.0
54"		69.0	109.1	103.5	120.0
57"		65.4	103.3	98.0	120.0
60"		62.1	98.2	93.1	120.0
63"		59.1	93.5	88.7	120.0
66"		56.5	89.2	84.7	120.0
69"		54.0	85.4	81.0	120.0
72"	51.7	81.8	77.6	120.0	
36"	132"	98.8	120.0	120.0	120.0
39"		91.2	120.0	120.0	120.0
42"		84.7	120.0	120.0	120.0
45"		79.0	120.0	118.5	120.0
48"		74.1	117.1	111.1	120.0
51"		69.7	110.2	104.6	120.0
54"		65.9	104.1	98.8	120.0
57"		62.4	98.6	93.6	120.0
60"		59.3	93.7	88.9	120.0
63"		56.5	89.2	84.7	120.0
66"		53.9	85.2	80.8	120.0
69"		51.5	81.5	77.3	120.0
72"	49.4	78.1	74.1	117.2	
36"	138"	94.5	120.0	120.0	120.0
39"		87.2	120.0	120.0	120.0
42"		81.0	120.0	120.0	120.0
45"		75.6	119.5	113.4	120.0
48"		70.9	112.0	106.3	120.0
51"		66.7	105.5	100.1	120.0
54"		63.0	99.6	94.5	120.0
57"		59.7	94.4	89.5	120.0
60"		56.7	89.6	85.0	120.0
63"		54.0	85.4	81.0	120.0
66"		51.5	81.5	77.3	120.0
69"		49.3	77.9	74.0	116.9
72"	47.2	74.7	70.9	112.1	

ANCHOR LOAD CAPACITY - PSF EXT.(+) & INT.(-)						
NOMINAL DIMS.		4 ANCHORS PER PLATE TYPE 'D'		6 ANCHORS PER PLATE TYPE 'D'		
WIDTH (W)	FRAME HEIGHT	2-1/4" EDGE DIST.	3-1/4" EDGE DIST.	2-1/4" EDGE DIST.	3-1/4" EDGE DIST.	
36"	144"	90.6	120.0	120.0	120.0	
39"		83.6	120.0	120.0	120.0	
42"		77.6	120.0	116.4	120.0	
45"		72.4	114.5	108.7	120.0	
48"		67.9	107.4	101.9	120.0	
51"		63.9	101.1	95.9	120.0	
54"		60.4	95.4	90.6	120.0	
57"		57.2	90.4	85.8	120.0	
60"		54.3	85.9	81.5	120.0	
63"		51.7	81.8	77.6	120.0	
66"		49.4	78.1	74.1	117.2	
69"		47.2	74.7	70.9	112.1	
36"	150"	86.9	120.0	120.0	120.0	
39"		80.2	120.0	120.0	120.0	
42"		74.5	117.8	111.8	120.0	
45"		69.5	110.0	104.3	120.0	
48"		65.2	103.1	97.8	120.0	
51"		61.4	97.0	92.0	120.0	
54"		58.0	91.6	86.9	120.0	
57"		54.9	86.8	82.4	120.0	
60"		52.2	82.5	78.2	120.0	
63"		49.7	78.5	74.5	117.8	
66"		47.4	75.0	71.1	112.5	
36"		156"	83.6	120.0	120.0	120.0
39"	77.2		120.0	115.7	120.0	
42"	71.6		113.3	107.5	120.0	
45"	66.9		105.7	100.3	120.0	
48"	62.7		99.1	94.0	120.0	
51"	59.0		93.3	88.5	120.0	
54"	55.7		88.1	83.6	120.0	
57"	52.8		83.5	79.2	120.0	
60"	50.2		79.3	75.2	119.0	
63"	47.8		75.5	71.6	113.3	
36"	162"		80.5	120.0	120.0	120.0
39"			74.3	117.5	111.5	120.0
42"		69.0	109.1	103.5	120.0	
45"		64.4	101.8	96.6	120.0	
48"		60.4	95.4	90.6	120.0	
51"		56.8	89.8	85.2	120.0	
54"		53.7	84.8	80.5	120.0	
57"		50.8	80.4	76.3	120.0	
60"		48.3	76.4	72.4	114.5	
36"		168"	77.6	120.0	116.4	120.0
39"			71.6	113.3	107.5	120.0
42"			66.5	105.2	99.8	120.0
45"	62.1		98.2	93.1	120.0	
48"	58.2		92.0	87.3	120.0	
51"	54.8		86.6	82.2	120.0	
54"	51.7		81.8	77.6	120.0	
57"	49.0		77.5	73.5	116.3	
60"	46.6		73.6	69.9	110.5	



TYPICAL ANCHORS:
 TYPE 'D'- 3/8" DIA. WEDGE-BOLT ANCHOR BY 'POWER FASTENERS'
 DIRECTLY INTO CONCRETE
 1-1/2" MIN. EMBED INTO CONC. (3000 PSI MIN.)
 EDGE DIST. (SEE CHARTS ABOVE)

Engr: JAVAD AHMAD
 CIVIL
 FLA. PE # 70592
 C.A.N. 3538
 MAY 16 2011

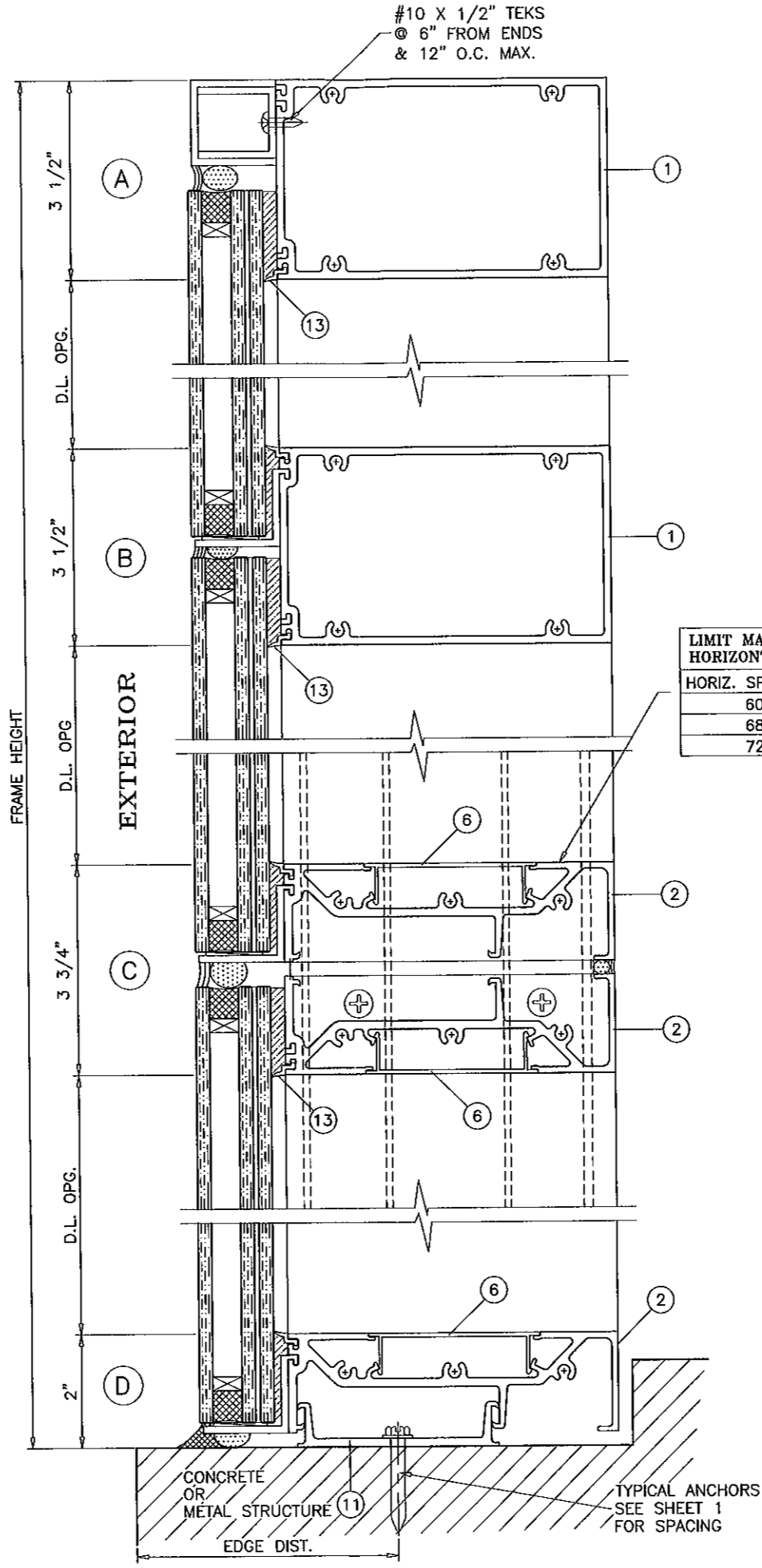
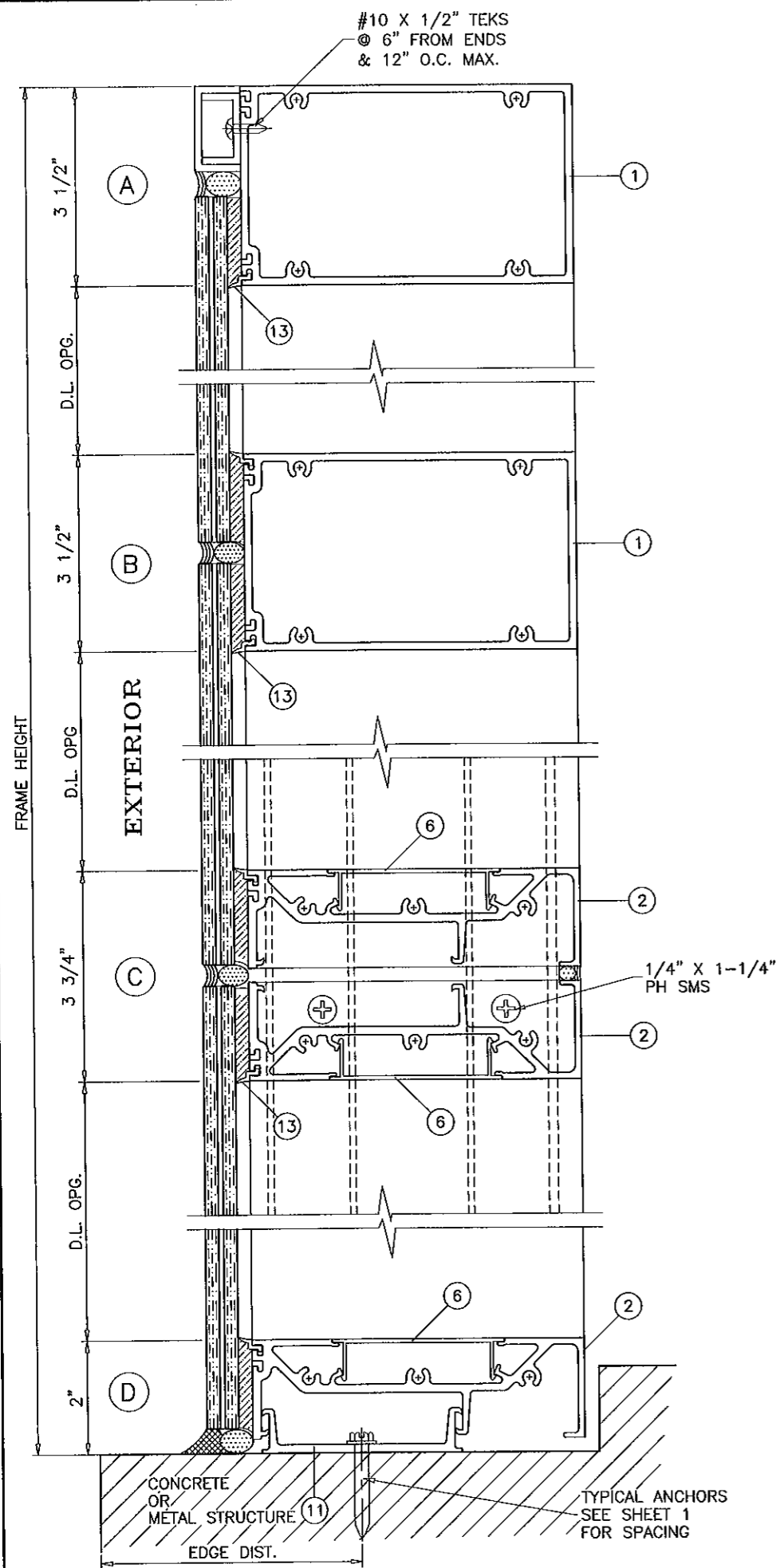
PRODUCT REVISED
 as complying with the Florida
 Building Code
 Acceptance No. 10-1213.10
 Expiration Date: March 2016
 Initial Date: Product Control

af c
AL-FAROOQ CORPORATION
 ENGINEERS & PRODUCT DEVELOPMENT
 1235 S.W. 87 AVE
 MIAMI, FLORIDA 33174
 TEL. (305) 264-8100 FAX. (305) 262-6978
 STORE/W04-78CTC

PRO-TECH 7SG ALUM CURTAIN WALL SYSTEM (L.M.I.)
CRAWFORD TRACEY CORPORATION
 3301 SW 13TH DRIVE
 DEERFIELD BEACH, FL. 33442-8101
 TEL. (954) 698-6888 FAX. (954) 698-6889

NO	DATE	BY	DESCRIPTION
D	06.19.08		REV. PER BOCO COMMENTS
E	06.19.08		NO CHANGE THIS SHEET
F	03.02.11		REV. PER BOCO COMMENTS
G	05.10.11		NO CHANGE THIS SHEET

date: 05-25-04
 scale: 1/4" = 1"
 dr. by: HAMID
 chk. by:
 drawing no.
W04-78
 sheet 7 of 17



LIMIT MAX. DESIGN LOADS FOR THIS HORIZONTAL AS FOLLOWS

HORIZ. SPAN MAX.	DESIGN LOADS
60"	120 PSF
68"	80 PSF
72"	65 PSF

Engr: JAVAD AHMAD
CIVIL
FLA. PE # 70592
C.A.N. 3538

MAY 16 2011

PRODUCT REVISED
as complying with the Florida
Building Code
Acceptance No 10-1213-10
Expiration Date MAR 02, 2016
By Ishag J. Hamid
Initial Date/Product Control

revisions:

no.	date	description	REV. PER BCCO COMMENTS
D	06.19.08		
E	08.19.08		
F	03.02.11		
G	05.10.11		

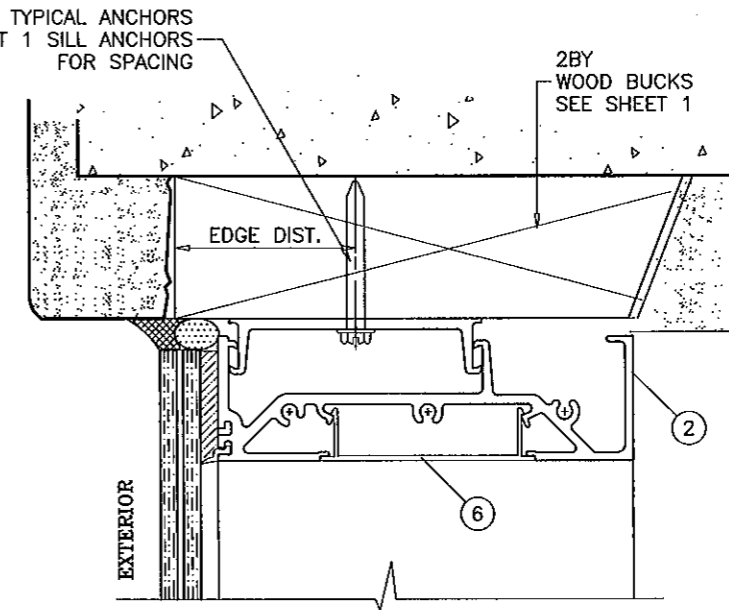
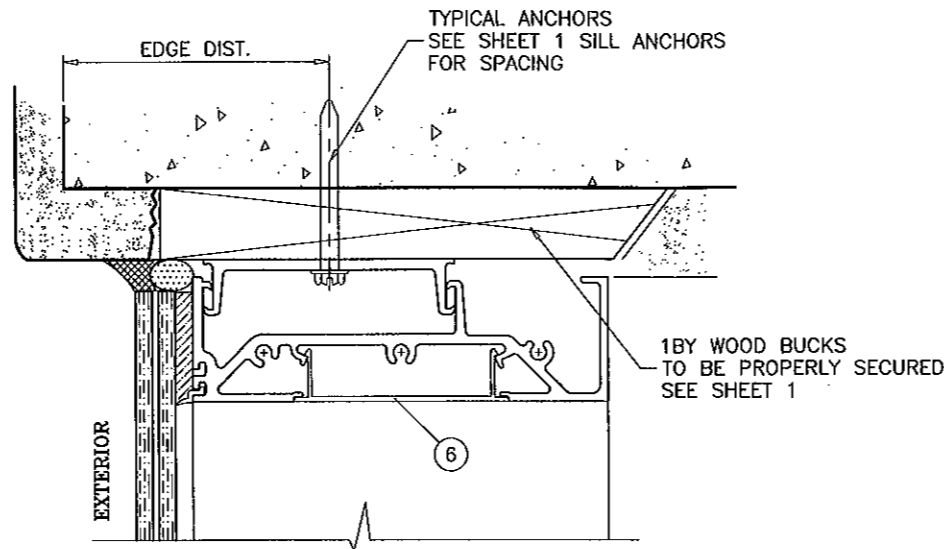
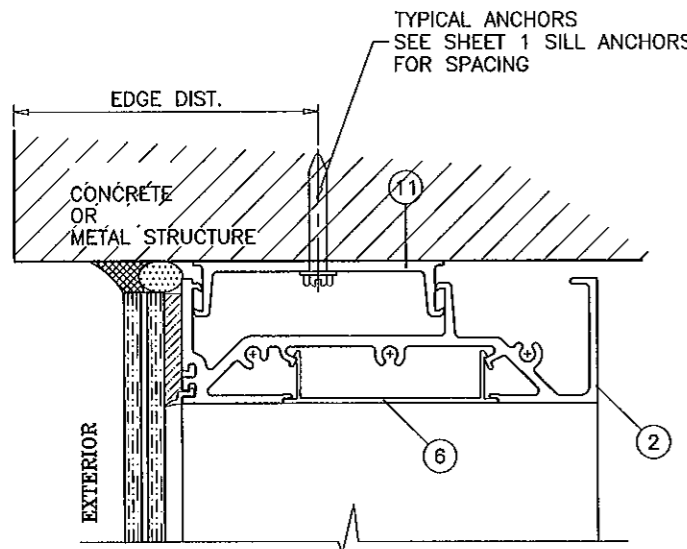
date: 05-25-04
scale: 3/8" = 1"
dr. by: HAMID
chk. by:

drawing no.
W04-78
sheet 8 of 17

AL-FAROOQ CORPORATION
ENGINEERS & PRODUCT DEVELOPMENT
1235 S.W. 87 AVE
MIAMI, FLORIDA 33174
TEL. (305) 264-8100 FAX. (305) 262-6978

PRO-TECH 7SG ALUM CURTAIN WALL SYSTEM (L.M.I.)
CRAWFORD TRACEY CORPORATION
3301 SW 13TH DRIVE
DEERFIELD BEACH, FL. 33442-8101
TEL. (954) 698-6888 FAX. (954) 698-6889

STORE W04-78CTC



WOOD/METAL STRUCTURES NOT BY CRAWFORD TRACEY, MUST SUPPORT LOADS IMPOSED BY GLAZING SYSTEM AND TRANSFER THEM TO THE BUILDING STRUCTURE.

TYPICAL ANCHORS: SEE ELEV. FOR SPACING

- TYPE 'AA' - 5/16" DIA. ULTRACON BY 'ELCO' (Fu=177 KSI, Fy=155 KSI) INTO 2BY WOOD BUCKS OR WOOD STRUCTURES 1-3/8" MIN. PENETRATION INTO WOOD
- TYPE 'A' - 5/16" DIA. ULTRACON BY 'ELCO' (Fu=177 KSI, Fy=155 KSI) THRU 1BY BUCKS INTO CONC. OR MASONRY 1-1/4" MIN. EMBED INTO CONC. OR MASONRY
- TYPE 'B' - 1/4" DIA. ULTRACON BY 'ELCO' (Fu=177 KSI, Fy=155 KSI) DIRECTLY INTO CONC. OR MASONRY 1-1/4" MIN. EMBED INTO CONC. OR MASONRY
- TYPE 'C' - 1/4" DIA TEKS OR SELF DRILLING SCREWS (GRADE 5 CRS) INTO METAL STRUCTURES (MIN. 1/8" EMBED INTO SUBSTRATE)
 STEEL : 1/8" THK. MIN. (Fy = 36 KSI MIN.)
 ALUMINUM : 1/8" THK. MIN. (6063-T5 MIN.)
 (STEEL IN CONTACT WITH ALUMINUM TO BE PLATED OR PAINTED)

TYPICAL EDGE DISTANCE

- INTO CONCRETE AND MASONRY = 2-1/2" MIN.
- INTO WOOD STRUCTURE = 1-1/4" MIN.
- INTO METAL STRUCTURE = 3/4" MIN.

CONCRETE AT HEAD, SILL OR JAMBS f'c = 3000 PSI MIN. (EXCEPT AS NOTED)
 C-90 HOLLOW/FILLED BLOCK AT JAMBS f'm = 2000 PSI MIN.

TYPE 'D' - 3/8" WEDGE BOLTS BY 'POWER FASTENERS' (SEE SHEET 7)

Engr: JAVAD AHMAD
 CIVIL
 FLA. PE # 70592
 C.A.N. 3538
 MAY 16 2011

PRODUCT REVISED
 as complying with the Florida
 Building Code
 Acceptance No. 10-1213-10
 Expiration Date: 02/02/2016
 by: *Shahid Chanda*
 Initial Date: Product Control

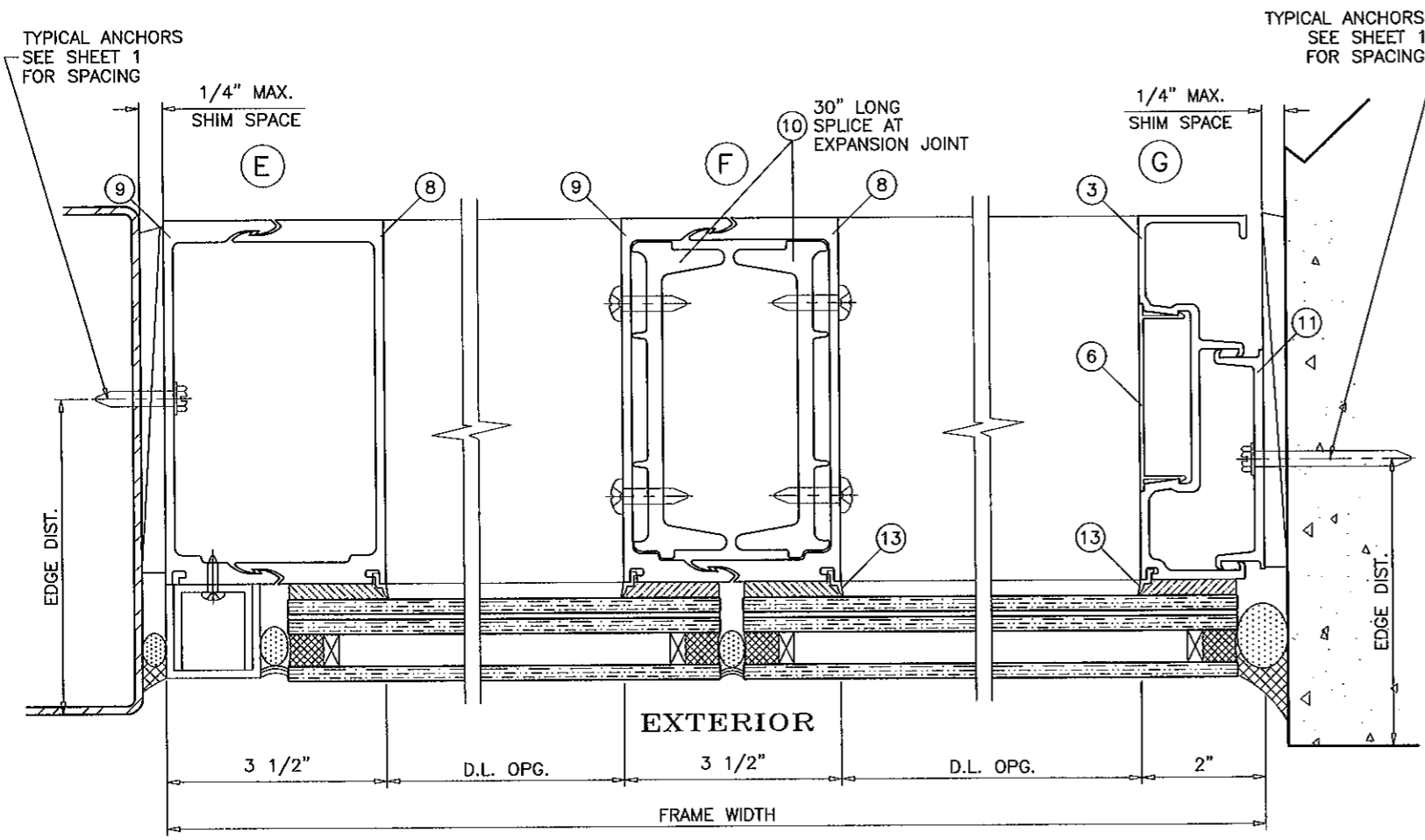
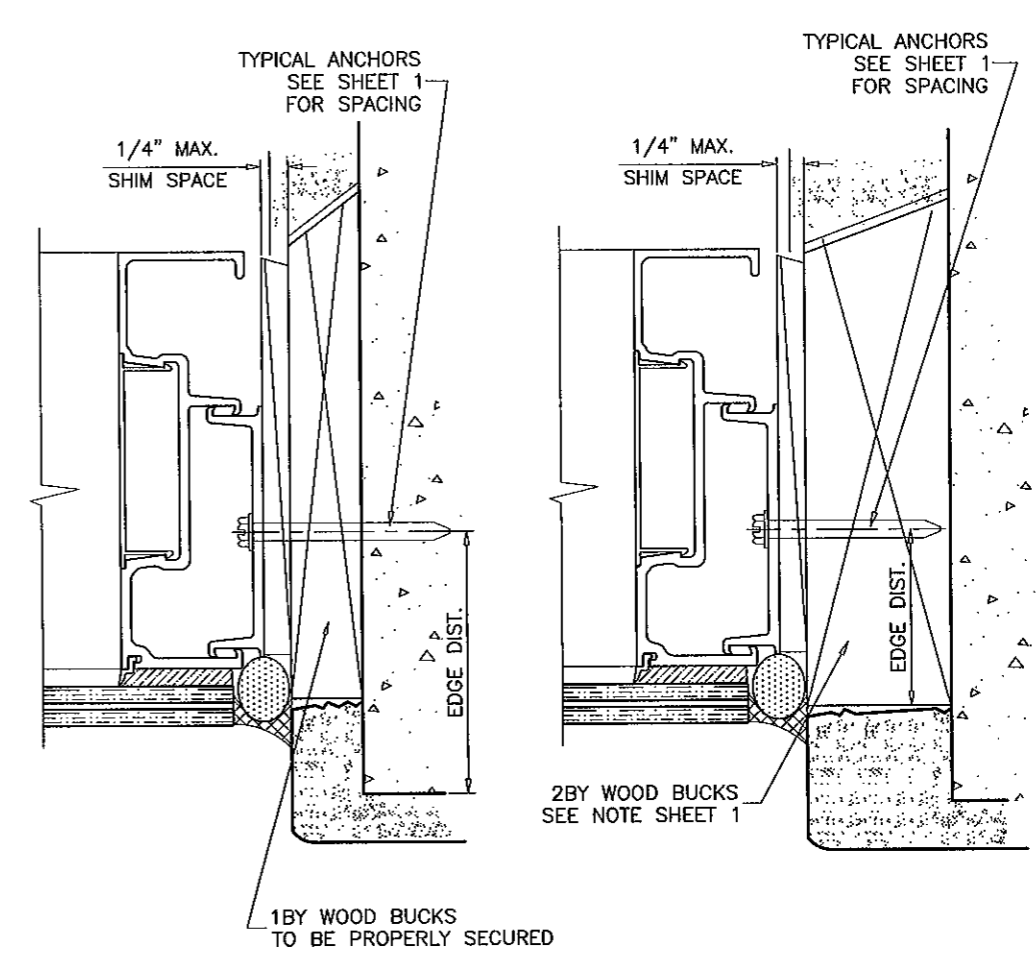
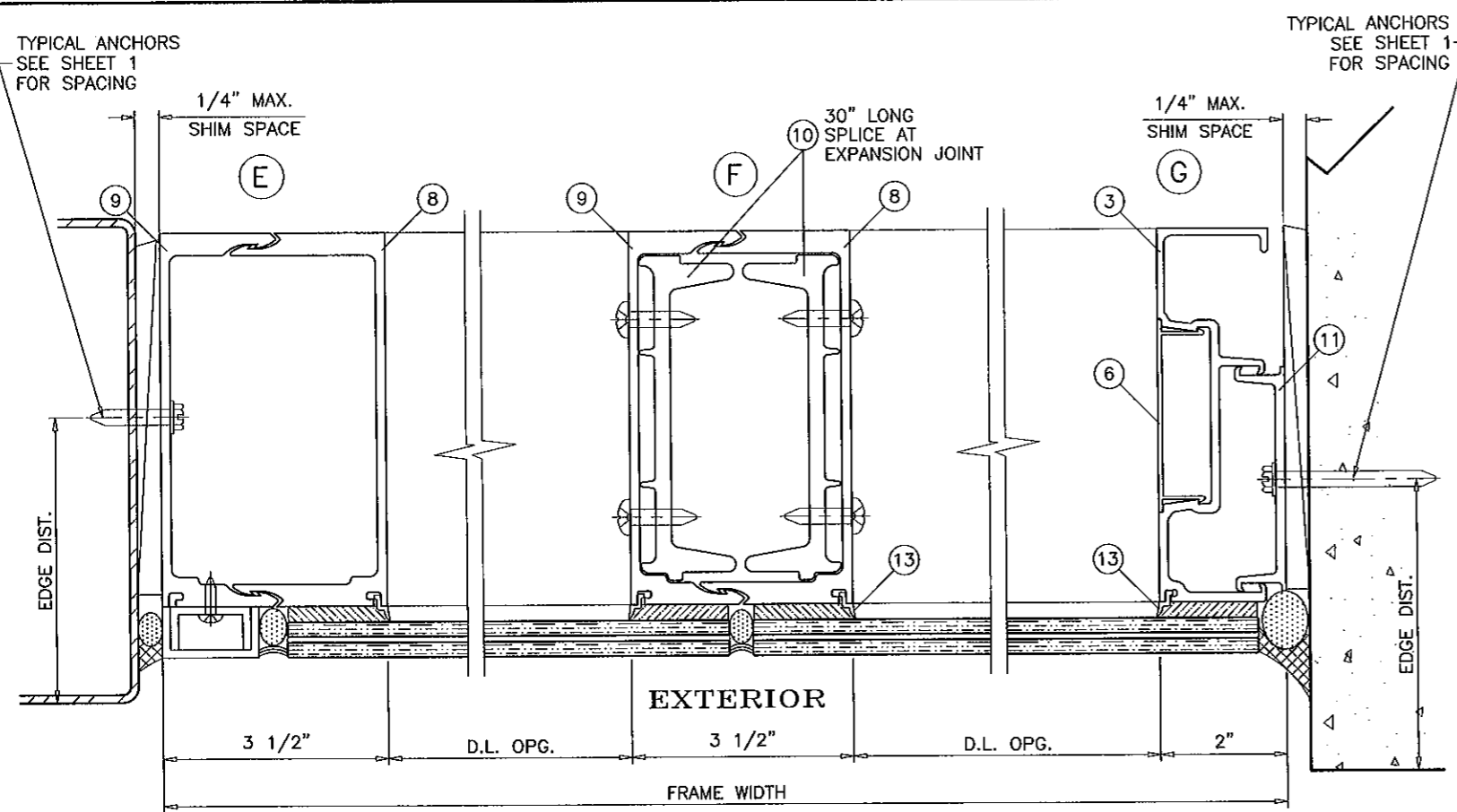
revisions:			
no.	date	description	by
D	06.19.08	REV. PER BCCO COMMENTS	
E	08.19.08	REV. PER BCCO COMMENTS	
F	03.02.11	REV. PER BCCO COMMENTS	
G	05.10.11	NO CHANGE THIS SHEET	

date: 05-25-04
 scale: 3/8" = 1"
 dr. by: HAMID
 chk. by:

drawing no.
W04-78
 sheet 9 of 17

af c
AL-FAROOQ CORPORATION
 ENGINEERS & PRODUCT DEVELOPMENT
 1235 S.W. 87 AVE
 MIAMI, FLORIDA 33174
 TEL. (305) 264-8100 FAX. (305) 262-6978
 STORE \W04-78CTC

PRO-TECH 75G ALUM CURTAIN WALL SYSTEM (L.M.I.)
CRAWFORD TRACEY CORPORATION
 3301 SW 13TH DRIVE
 DEERFIELD BEACH, FL. 33442-8101
 TEL. (954) 698-6888 FAX. (954) 698-6888



Engr: JAVAD AHMAD
 CIVIL
 FLA. PE # 70592
 C.A.N. 3538

MAY 16 2011

PRODUCT REVISED
 as complying with the Florida
 Building Code
 Acceptance No. 10-1213-10
 Expiration Date 02/28/2016
 by *Ismael Dade*
 Ismael Dade/Product Control

af c

AL-FAROOQ CORPORATION
 ENGINEERS & PRODUCT DEVELOPMENT
 1235 S.W. 87 AVE
 MIAMI, FLORIDA 33174
 TEL. (305) 264-8100 FAX. (305) 262-6978
 STORE W04-78CTC

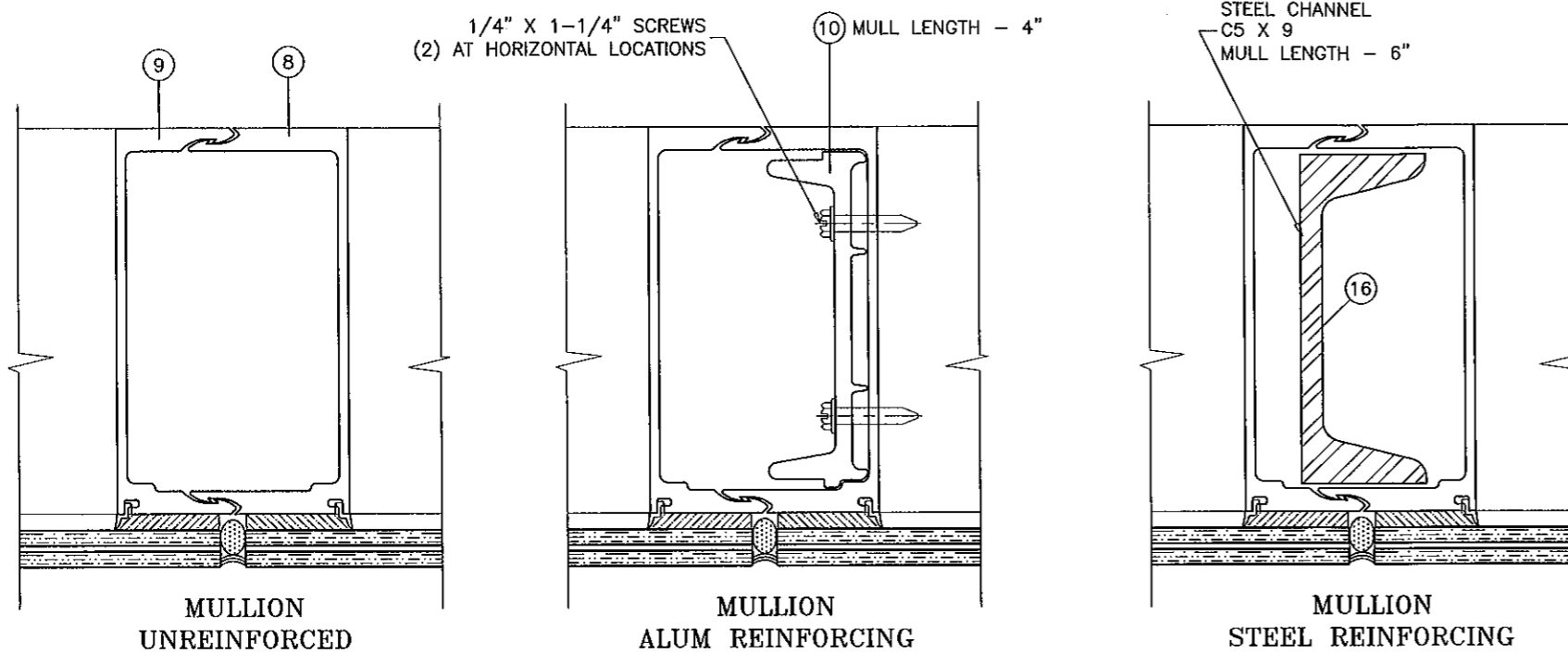
PRO-TECH 75G ALUM CURTAIN WALL SYSTEM (L.M.I.)

CRAWFORD TRACEY CORPORATION
 3301 SW 13TH DRIVE
 DEERFIELD BEACH, FL. 33442-8101
 TEL. (954) 698-6888 FAX. (954) 698-6889

no.	date	description	REV. PER BCCO COMMENTS
D	06.19.08		
E	08.19.08		
F	10.30.11		
G	05.10.11		

date: 05-25-04
 scale: 3/8" = 1"
 dr. by: HAMID
 chk. by:

drawing no.
W04-78
 sheet 10 of 17



EXTERIOR

Engr: JAVAD AHMAD
 CIVIL
 FLA. PE # 70592
 C.A.N. 3538

MAY 16 2011

PRODUCT REVISED
 as complying with the Florida
 Building Code
 Acceptance No. 10-1215-10
 Expiration Date 02/2016
 By: Ishaq I. Chaudhry
 Miami Data/Product Control

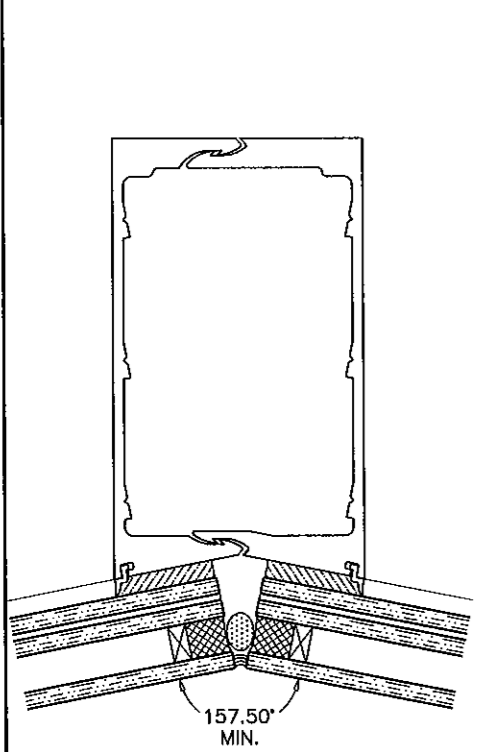
no.	date	description
D	06.19.08	REV. PER BCCO COMMENTS
E	08.19.08	NO CHANGE THIS SHEET
F	03.02.11	REV. PER BCCO COMMENTS
G	05.10.11	NO CHANGE THIS SHEET

date: 05-25-04
 scale: 3/8" = 1"
 dr. by: HAMID
 chk. by:

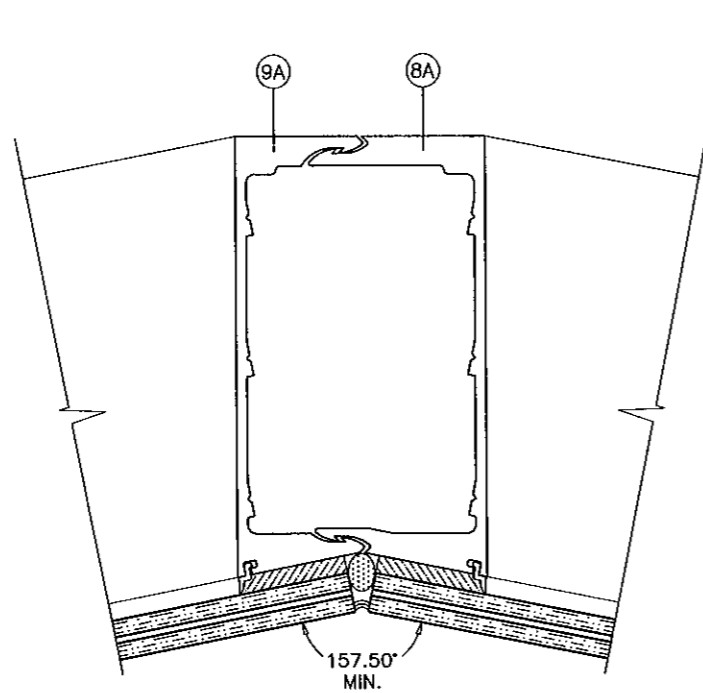
drawing no.
 W04-78
 sheet 11 of 17

PRO-TECH 75G ALUM CURTAIN WALL SYSTEM (L.M.I.)
CRAWFORD TRACEY CORPORATION
 3301 SW 13TH DRIVE
 DEERFIELD BEACH, FL. 33442-8101
 TEL. (954) 698-6888 FAX. (954) 698-6889

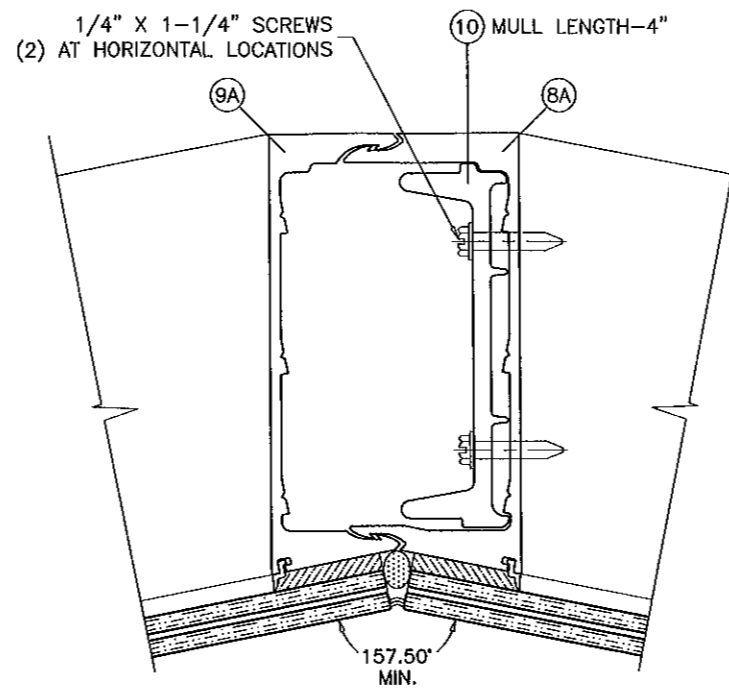
AL-FAROOQ CORPORATION
 ENGINEERS & PRODUCT DEVELOPMENT
 1235 S.W. 87 AVE
 MIAMI, FLORIDA 33174
 TEL. (305) 264-8100 FAX. (305) 262-6978
 STORE W04-78CTC



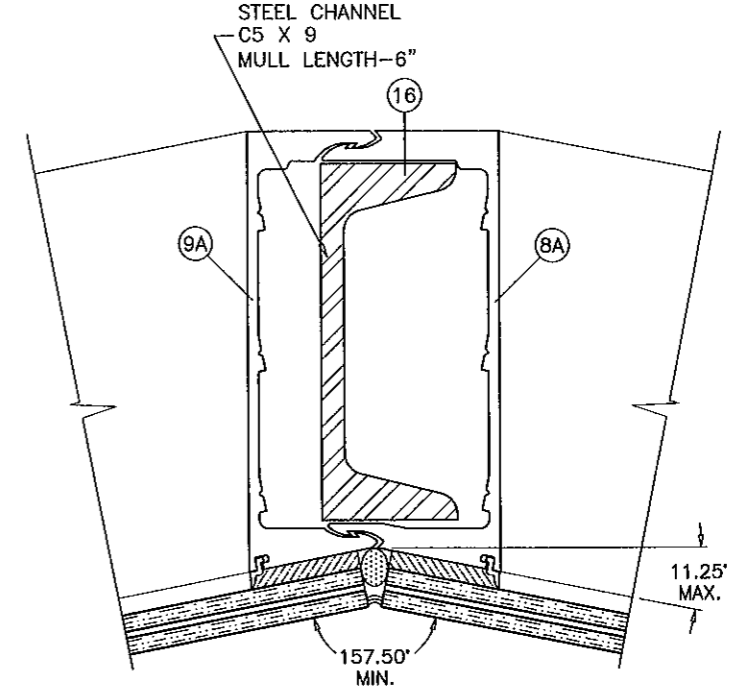
MULLION
UNREINFORCED
MAX. L = 120 IN.



MULLION
UNREINFORCED
MAX. L = 120 IN.

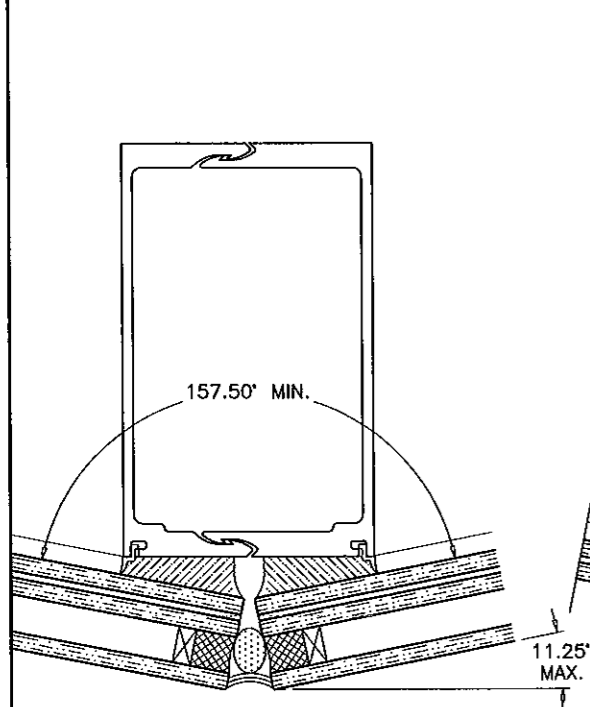


MULLION
ALUM REINFORCING

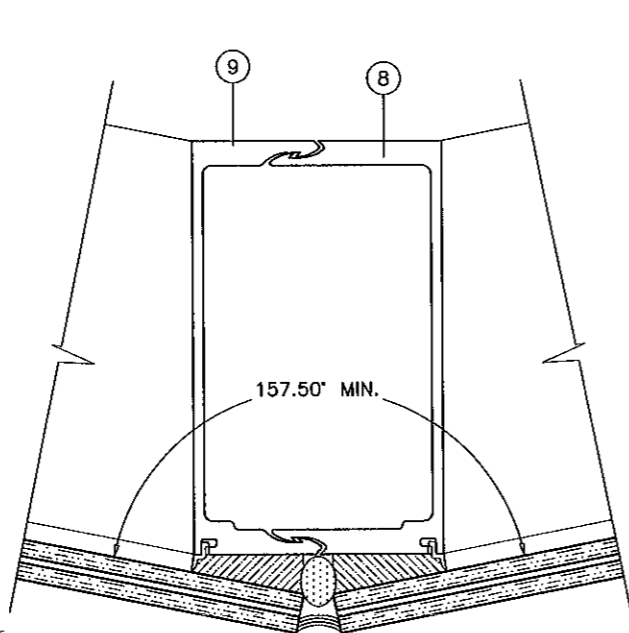


MULLION
STEEL REINFORCING

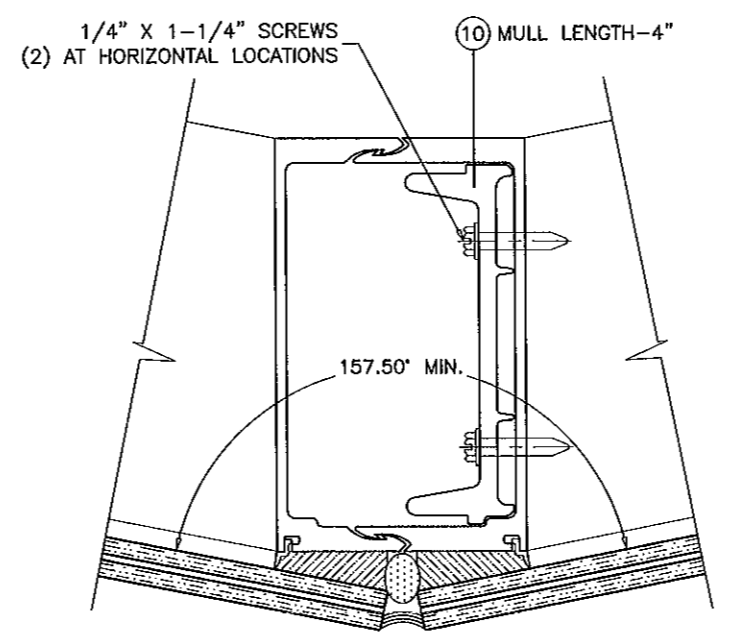
EXTERIOR



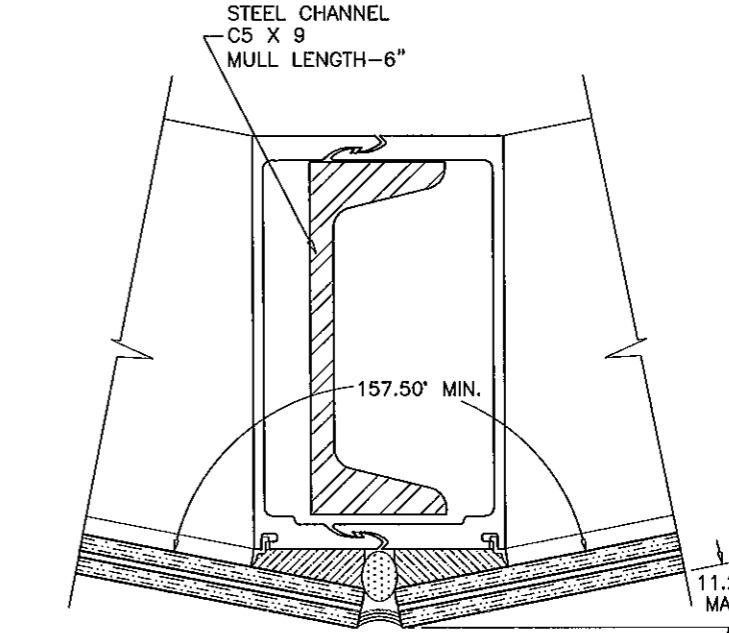
MULLION
UNREINFORCED
MAX. L = 120 IN.



MULLION
UNREINFORCED
MAX. L = 120 IN.



MULLION
ALUM REINFORCING



MULLION
STEEL REINFORCING

EXTERIOR

PRODUCT REVISED
as complying with the Florida
Building Code
Acceptance No 10-1213-10
Expiration Date 10/02/2016
By *Isaac J. Chandra*
Senior Design Product Control

Engr: JAVAD AHMAD
CIVIL
FLA. PE # 70592
C.A.N. 3538
JAVAD AHMAD
16 2016



AL-FAROOQ CORPORATION
ENGINEERS & PRODUCT DEVELOPMENT
1235 S.W. 87 AVE
MIAMI, FLORIDA 33174
TEL. (305) 264-8100 FAX. (305) 262-6978

PRO-TECH 75G ALUM CURTAIN WALL SYSTEM (L.M.I.)
CRAWFORD TRACEY CORPORATION
3301 SW 13TH DRIVE
DEERFIELD BEACH, FL. 33442-8101
TEL. (954) 698-6888 FAX. (954) 698-6889

NO	DATE	BY	DESCRIPTION
D	06.19.08	REV.	PER BCCO COMMENTS
E	06.19.08	REV.	PER BCCO COMMENTS
F	03.02.11	REV.	PER BCCO COMMENTS
G	05.10.11	NO CHANGE	THIS SHEET

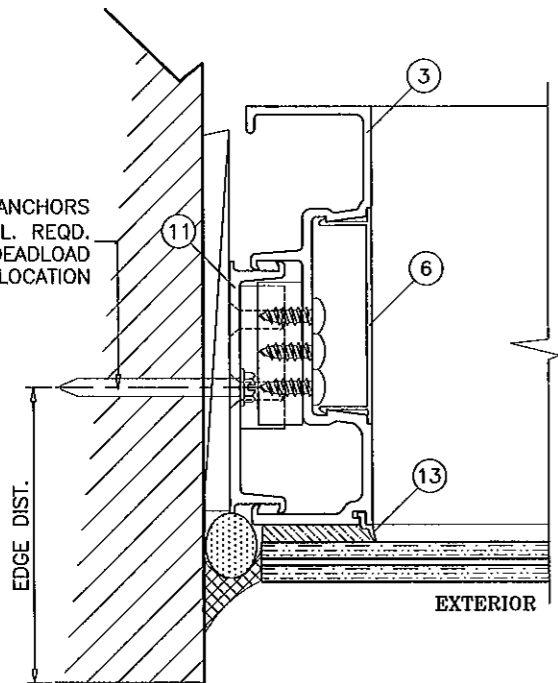
date: 05-25-04
scale: 3/8" = 1"
dr. by: HAMID
chk. by:

drawing no.
W04-78

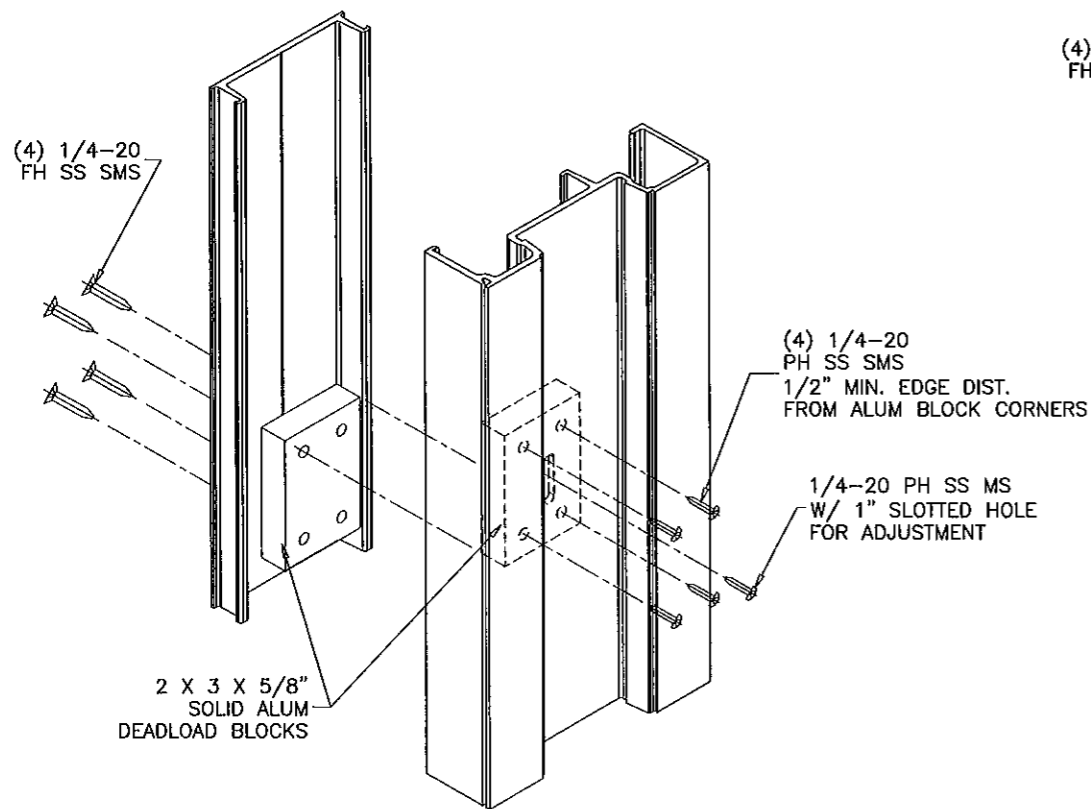
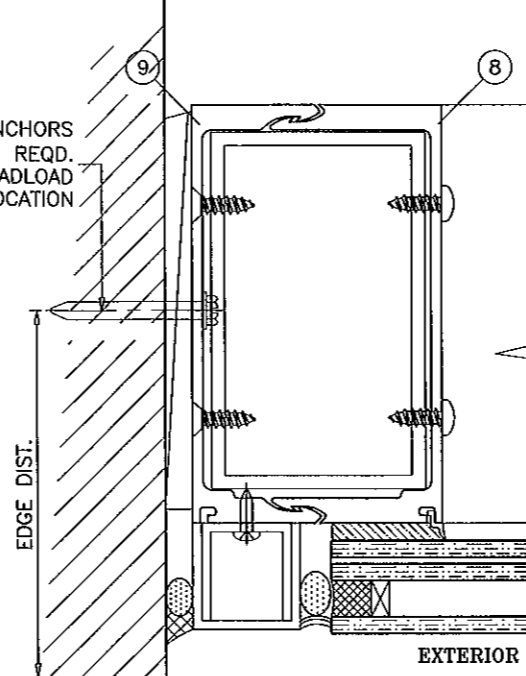
sheet 12 of 17

STORE W04-78CTC

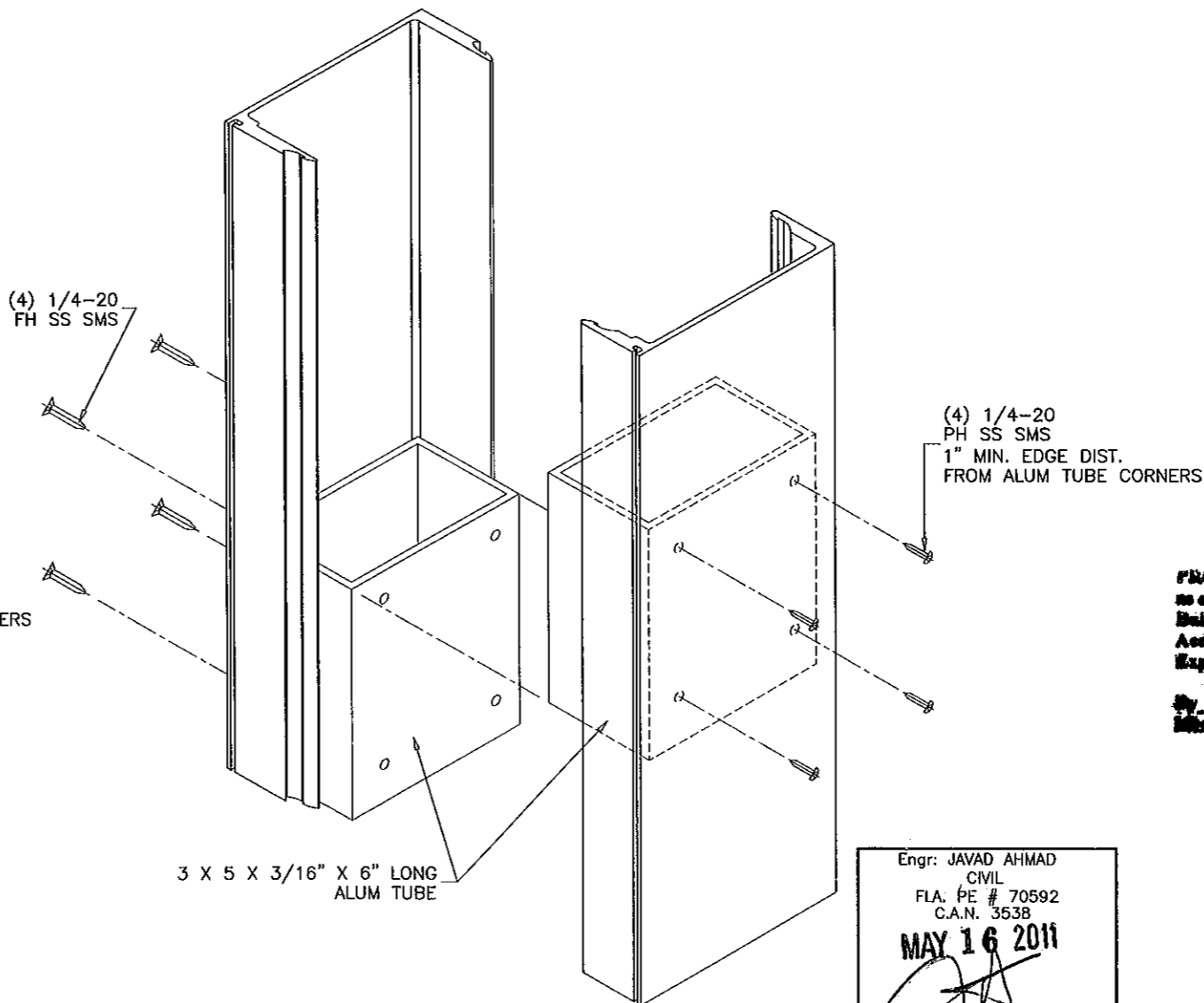
TYPICAL ANCHORS
(3) ADDL. REQD.
AT DEADLOAD
BLOCK LOCATION



TYPICAL ANCHORS
(3) ADDL. REQD.
AT DEADLOAD
BLOCK LOCATION



DEADLOAD BLOCKS DETAIL
TYPICAL JAMBS



DEADLOAD BLOCKS DETAIL
ANCHORED MULLION AT JAMB

Engr: JAVAD AHMAD
CIVIL
FLA. PE # 70592
C.A.N. 353B
MAY 16 2011

PRODUCT REVISED
no complying with the Florida
Building Code
Acceptance No 10-1213-10
Expiration Date 12/31/2016
Isqat Chaudhry
Internal Dead Load Control

NO	DATE	BY	DESCRIPTION
D	06.19.08		REV. PER BOCO COMMENTS
E	08.19.08		REV. PER BOCO COMMENTS
F	03.02.11		REV. PER BOCO COMMENTS
G	05.10.11		NO CHANGE THIS SHEET

date: 05-25-04
scale: 3/8" = 1"
dr. by: HAMID
chk. by:

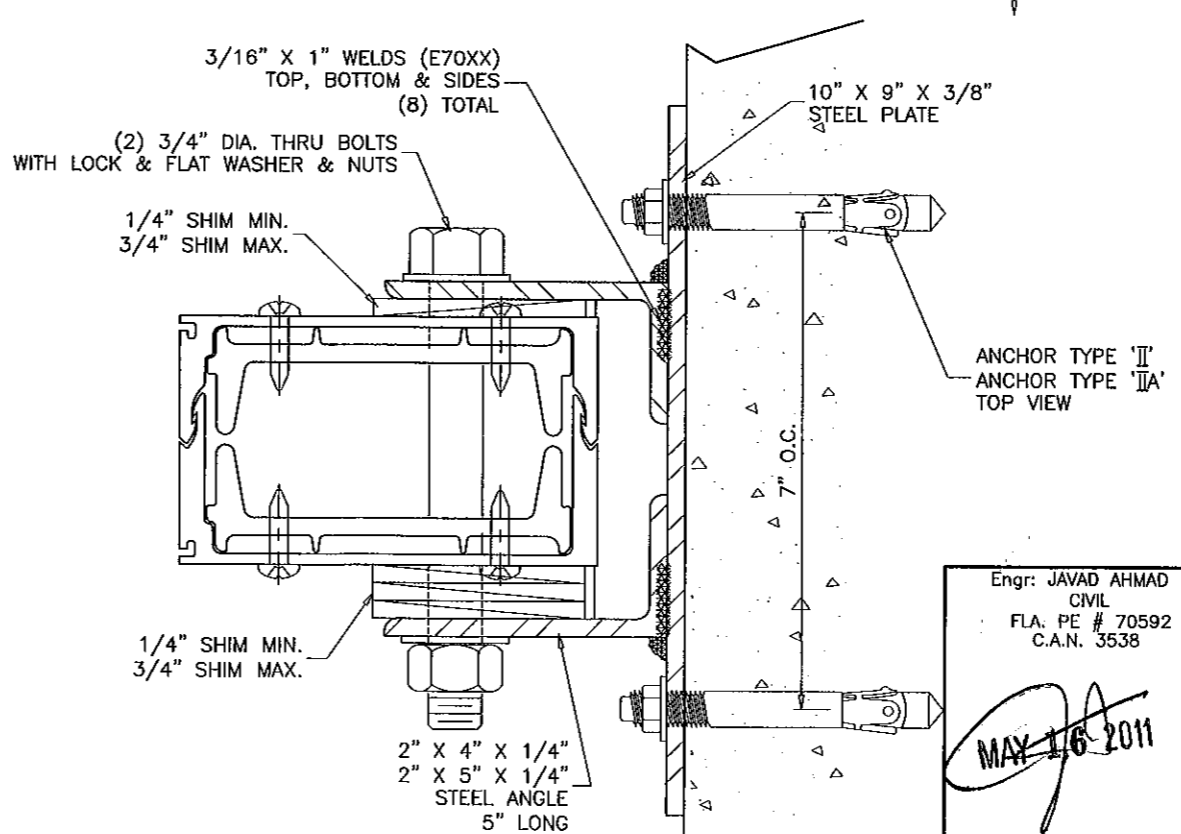
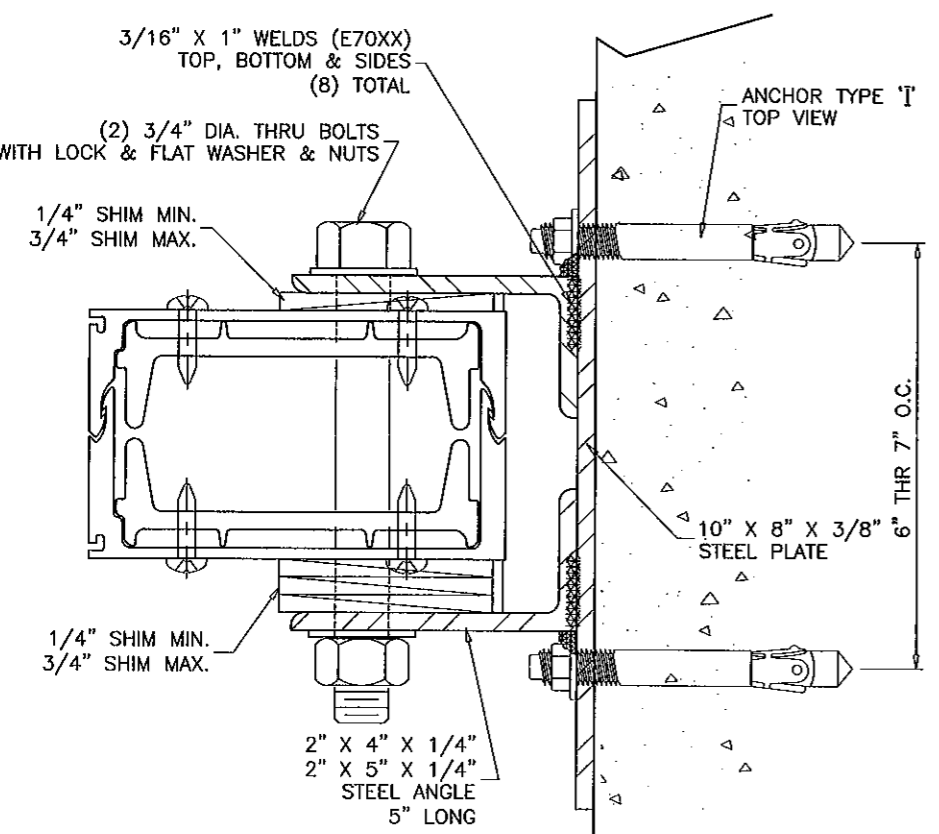
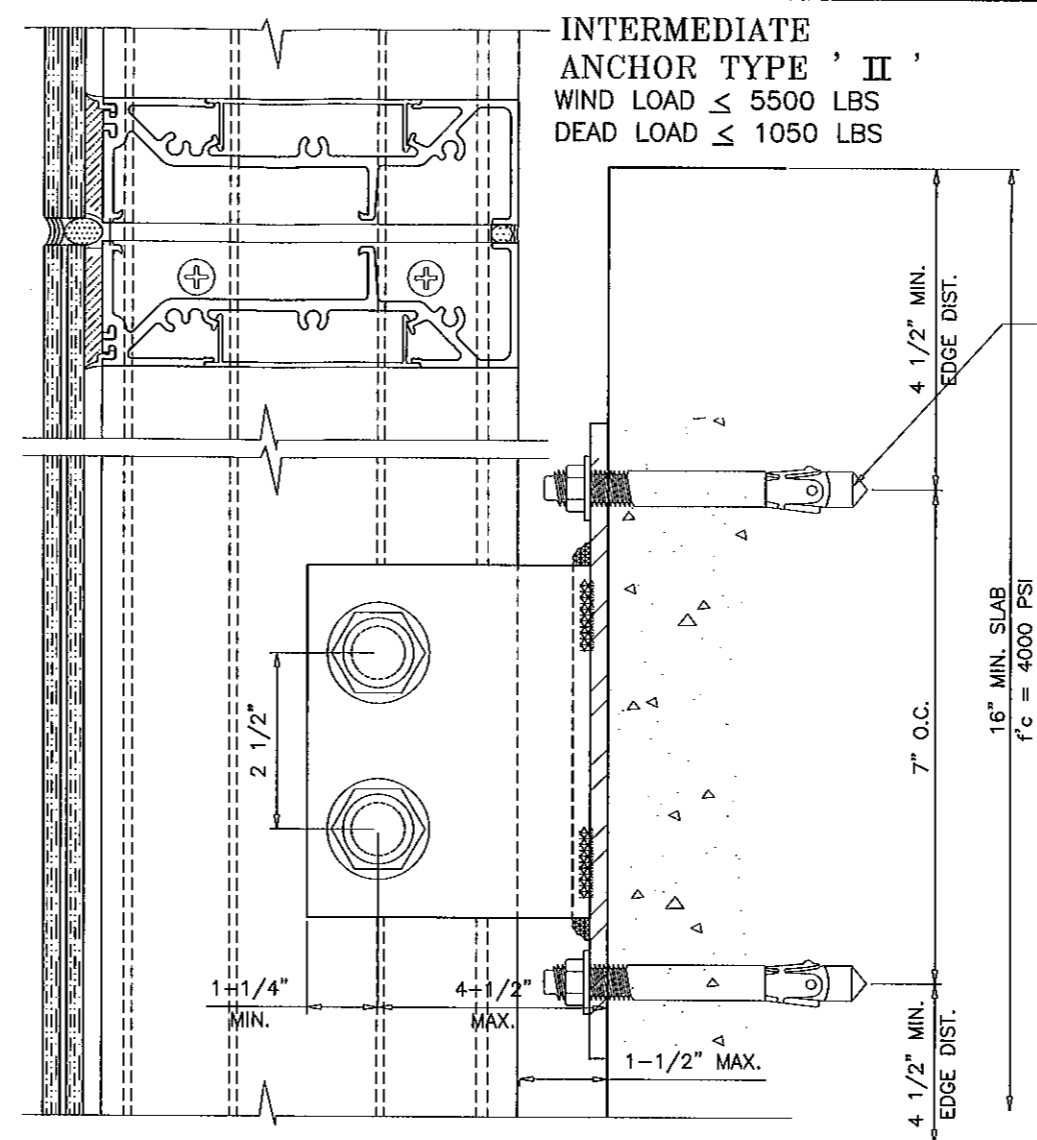
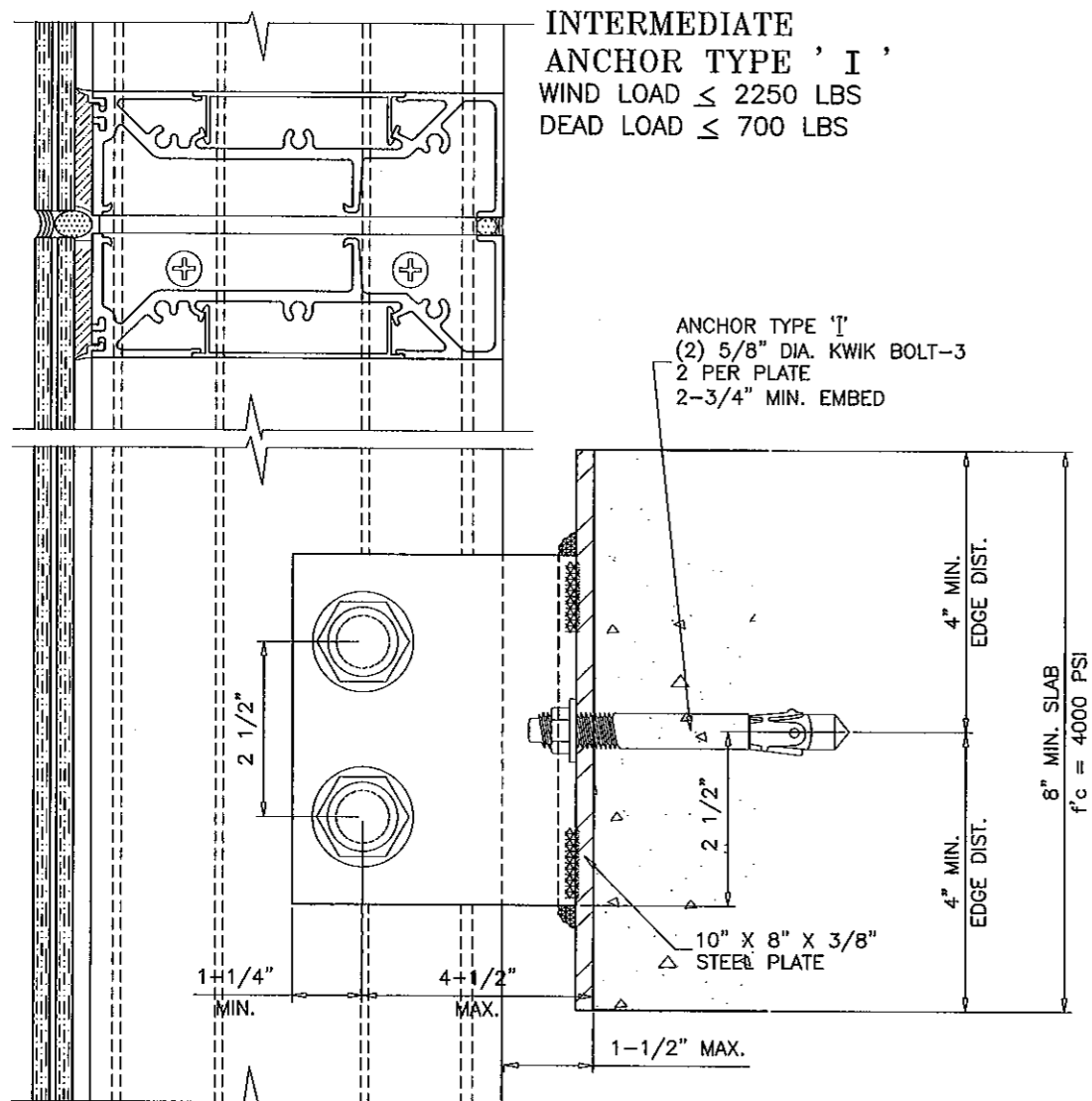
drawing no.
W04-78

sheet 13 of 17

PRO-TECH 7SG ALUM CURTAIN WALL SYSTEM (L.M.I.)
CRAWFORD TRACEY CORPORATION
3301 SW 13TH DRIVE
DEERFIELD BEACH, FL. 33442-8101
TEL. (954) 698-6888 FAX. (954) 698-6889

AL-FAROOQ CORPORATION
ENGINEERS & PRODUCT DEVELOPMENT
1235 S.W. 87 AVE
MIAMI, FLORIDA 33174
TEL. (305) 264-8100 FAX. (305) 262-6978

afc
STORE\W04-78CTC



Engr: JAVAD AHMAD
CIVIL
FLA. PE # 70592
C.A.N. 3538

MAY 16 2011

PRODUCT REVISED
as complying with the Florida
Building Code
Acceptance No 10-1213.10
Expiration Date MAR 02, 2016
By Ishag I. Chaudhry
Miami Dade Product Control

af c

AL-FAROOQ CORPORATION
ENGINEERS & PRODUCT DEVELOPMENT
1235 S.W. 87 AVE
MIAMI, FLORIDA 33174
TEL. (305) 264-8100 FAX. (305) 262-6978
STORE W04-78CTC

PRO-TECH 7SG ALUM CURTAIN WALL SYSTEM (L.M.I.)

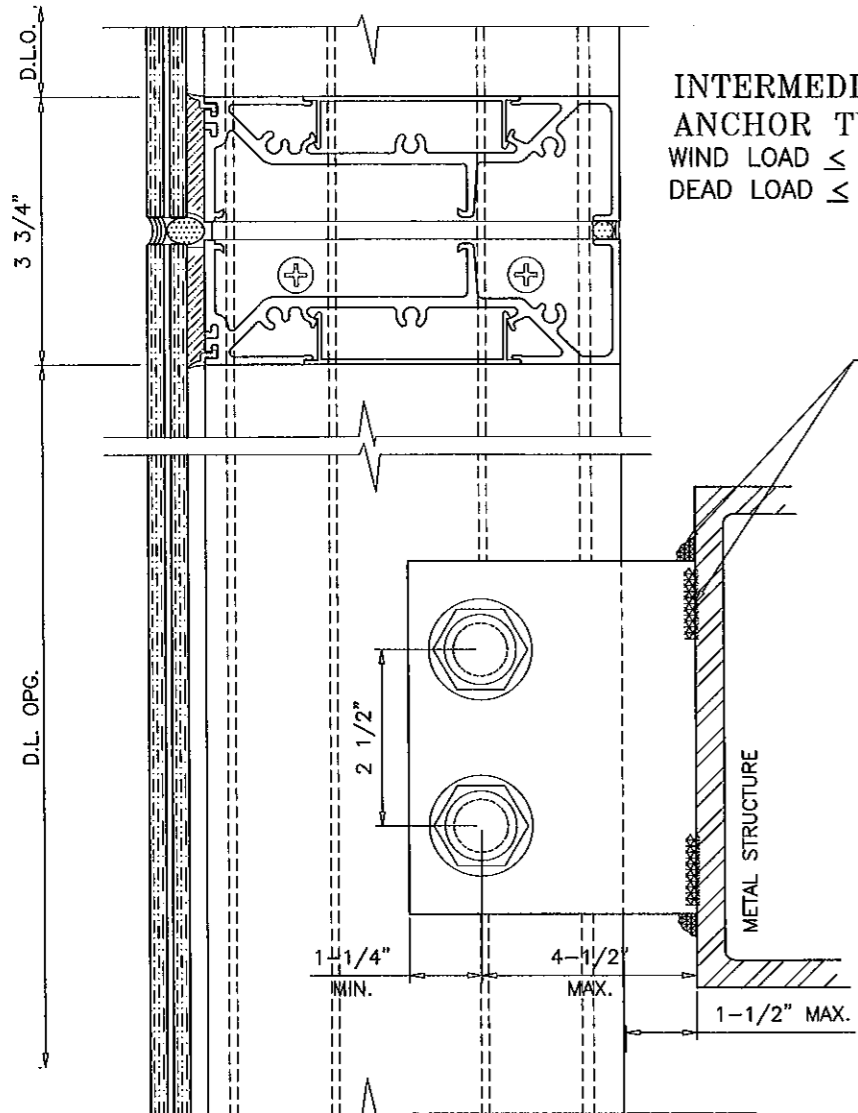
CRAWFORD TRACEY CORPORATION
3301 SW 13TH DRIVE
DEERFIELD BEACH, FL. 33442-8101
TEL. (954) 698-6888 FAX. (954) 698-6889

NO	DATE	DESCRIPTION	BY
D	06.19.08	REV. PER BCCO COMMENTS	
E	08.19.08	NO CHANGE THIS SHEET	
F	03.02.11	REV. PER BCCO COMMENTS	
G	05.10.11	REV. PER BNC COMMENTS	

date: 05-25-04
scale: 3/8" = 1"
dr. by: HAMID
chk. by:

drawing no.
W04-78

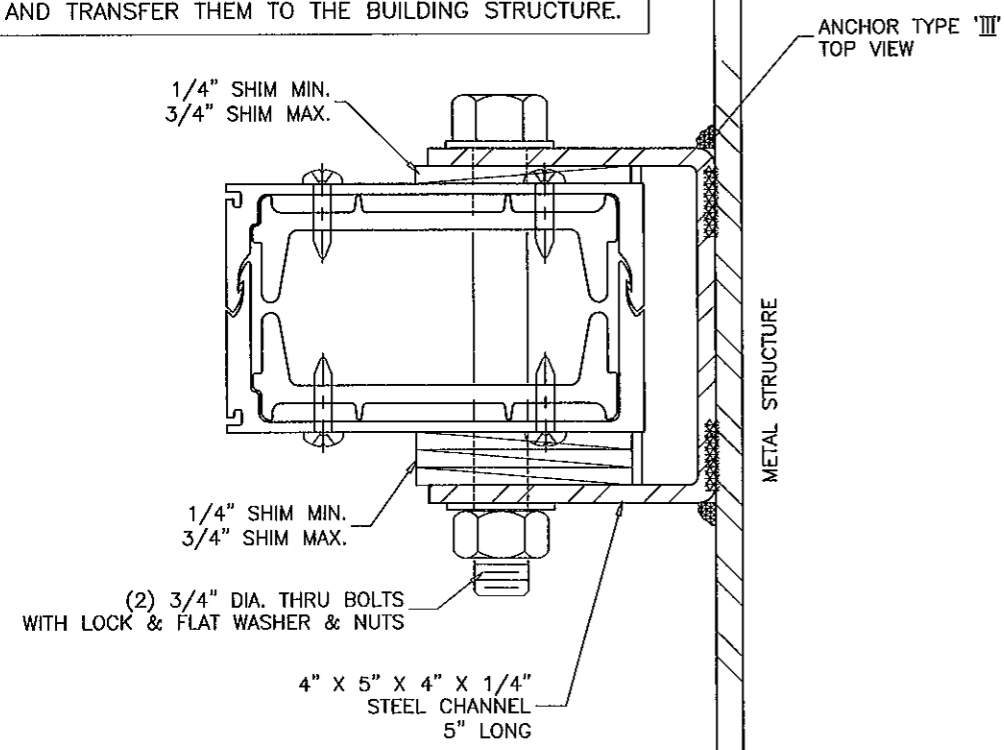
sheet 14 of 17



INTERMEDIATE
ANCHOR TYPE 'III'
WIND LOAD ≤ 8400 LBS
DEAD LOAD ≤ 1050 LBS

ANCHOR TYPE 'III'
3/16" X 1" WELDS (E70XX)
TOP, BOTTOM & SIDES
(8) TOTAL

METAL STRUCTURES NOT BY CRAWFORD TRACEY,
MUST SUPPORT LOADS IMPOSED BY GLAZING SYSTEM
AND TRANSFER THEM TO THE BUILDING STRUCTURE.



PRODUCT REVISED
as complying with the Florida
Building Code
Acceptance No 10-1213.10
Expiration Date MAR 03, 2016
by Ichas L. Chay
Miami Code Product Control

Engr: JAVAD AHMAD
CIVIL
FLA. PE # 70592
C.A.N. 3538
MAY 16 2011

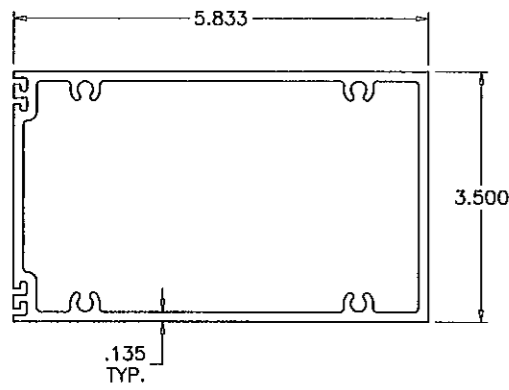
af c
AL-FAROOQ CORPORATION
ENGINEERS & PRODUCT DEVELOPMENT
1235 S.W. 87 AVE
MIAMI, FLORIDA 33174
TEL. (305) 264-8100 FAX. (305) 262-6978
STORE \ W04-78CTC

PRO-TECH 7SG ALUM CURTAIN WALL SYSTEM (L.M.I.)
CRAWFORD TRACEY CORPORATION
3301 SW 13TH DRIVE
DEERFIELD BEACH, FL. 33442-8101
TEL. (954) 698-6888 FAX. (954) 698-6889

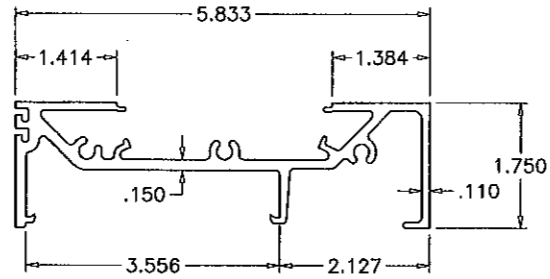
no	date	description	REV. PER BCCO COMMENTS
D	06.19.08		
E	08.19.08		
F	03.02.11		
G	05.10.11		

date: 05-25-04
scale: 3/8" = 1"
dr. by: HAMID
chk. by:

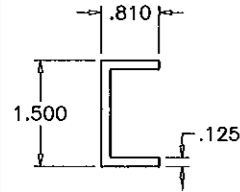
drawing no.
W04-78
sheet 15 of 17



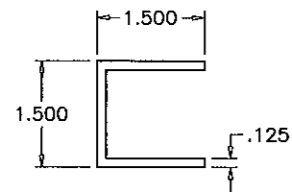
① FRAME HEAD/HORIZONTAL



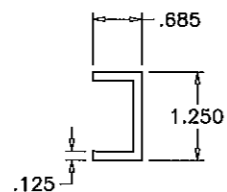
② FRAME HEAD/SILL



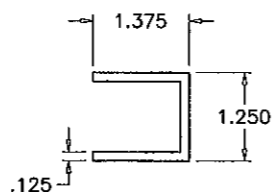
⑤



⑤A

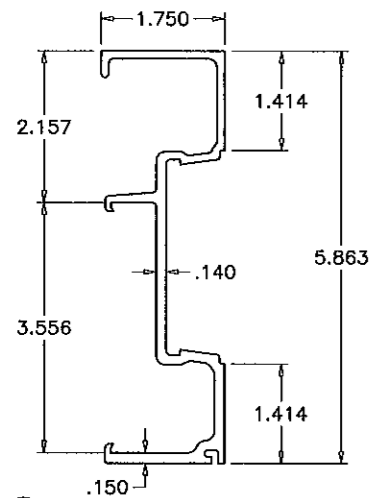


④

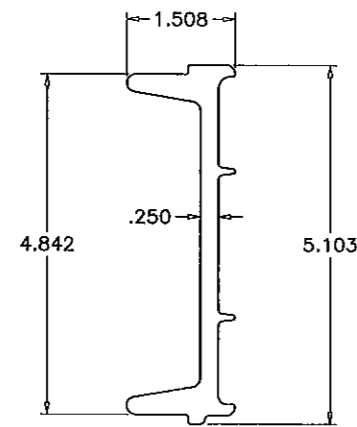


④A

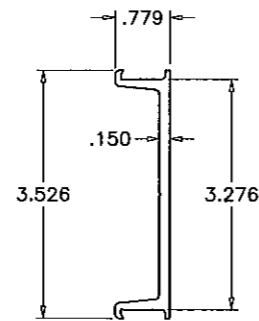
FILLER CHANNELS



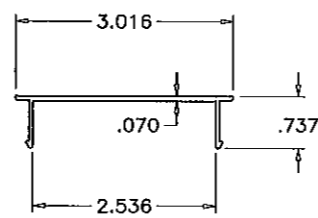
③ FRAME JAMB



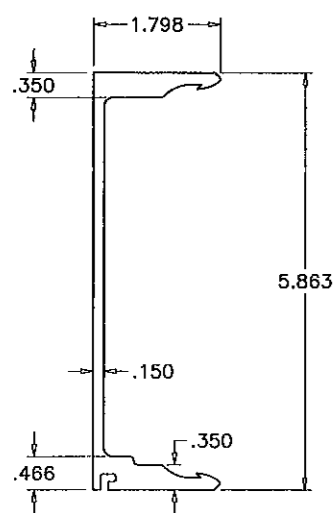
⑩ ALUM REINFORCING OR SPLICE



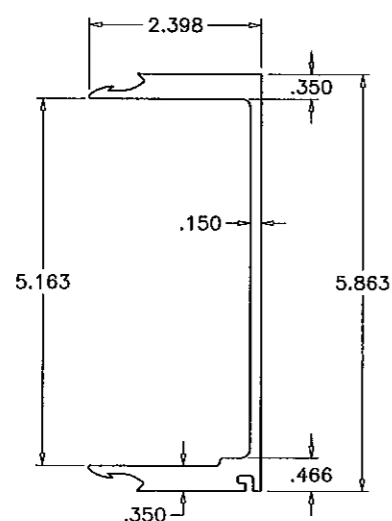
⑪ SUB BUCK



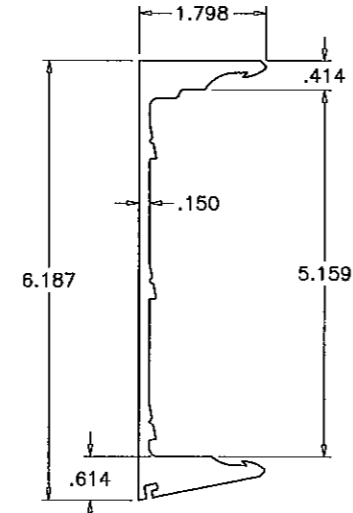
⑥ FRAME COVER



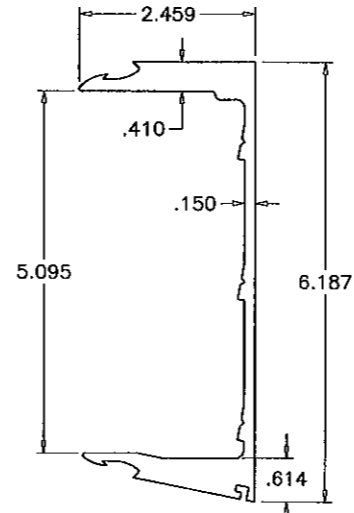
⑨ FEMALE JAMB/MULLION



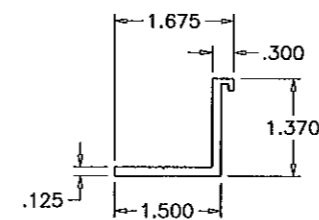
⑧ MALE JAMB/MULLION



⑨A ALT. FEMALE MULLION



⑧A ALT. MALE MULLION



⑫ SETTING PIECE INSUL. LAM. GLASS

Engr: JAVAD AHMAD
CIVIL
FLA. PE # 70592
C.A.N. 3538
MAY 16 2011

PRODUCT REVISED
as complying with the Florida
Building Code
Acceptance No 10-1213-10
Expiration Date MAR 02, 2016
by Iskra L. L...
Miami Dade Product Control

PRO-TECH 75G ALUM CURTAIN WALL SYSTEM (L.M.I.)
CRAWFORD TRACEY CORPORATION
3301 SW 13TH DRIVE
DEERFIELD BEACH, FL. 33442-8101
TEL. (954) 698-6888 FAX. (954) 698-6889

no	date	description	rev. per	by
D	06.19.08	REV. PER BCCO COMMENTS	NO CHANGE THIS SHEET	
E	08.19.08	NO CHANGE THIS SHEET	NO CHANGE THIS SHEET	
F	03.02.11	NO CHANGE THIS SHEET	NO CHANGE THIS SHEET	
G	05.10.11	REV. PER BNC COMMENTS	REV. PER BNC COMMENTS	

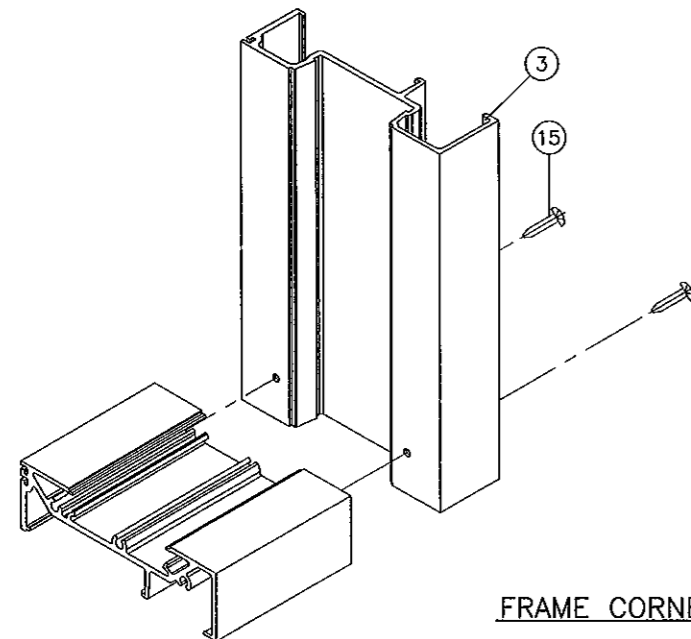
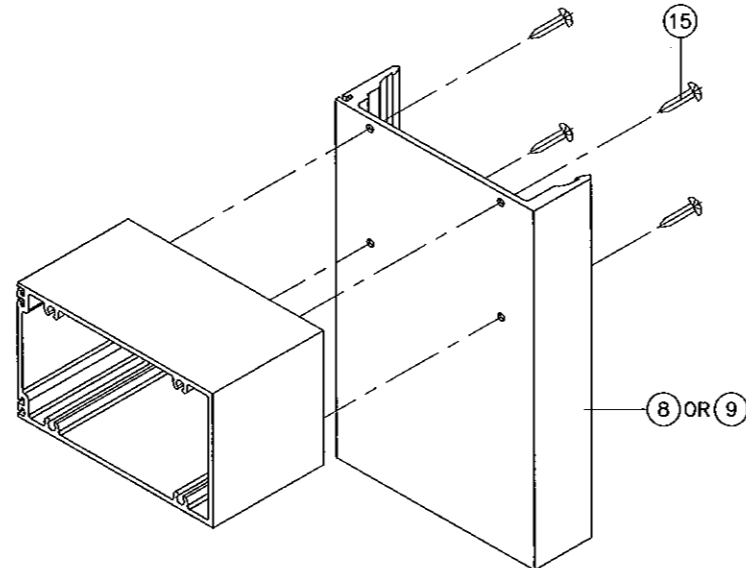
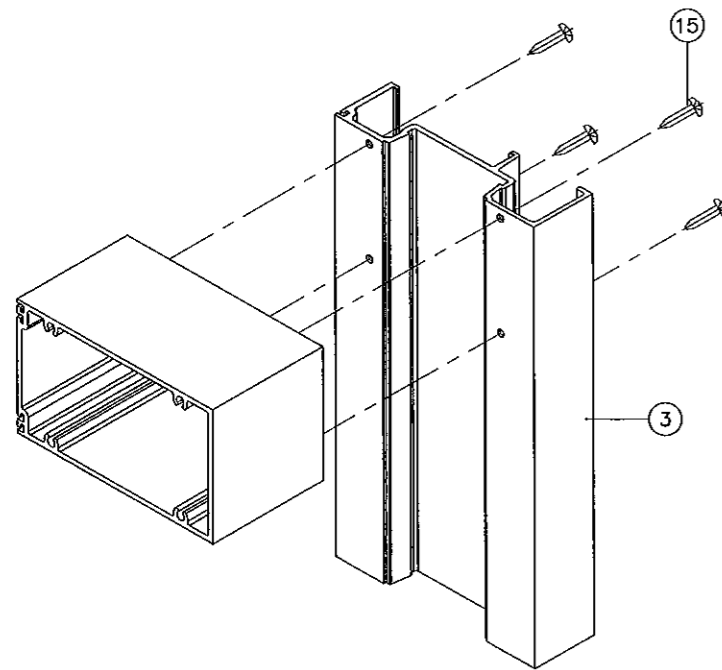
date: 05-25-04
scale: 3/8" = 1"
dr. by: HAMID
chk. by:

drawing no.
W04-78

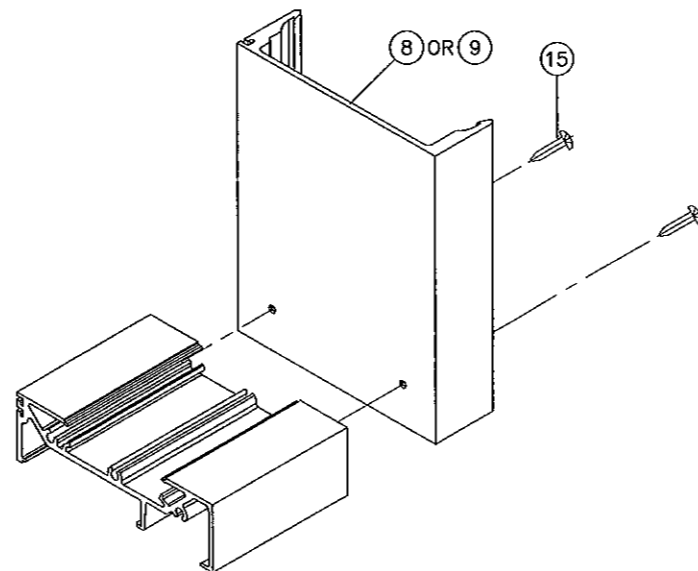
sheet 16 of 17

af c
AL-FAROOQ CORPORATION
ENGINEERS & PRODUCT DEVELOPMENT
12395 S.W. 87 AVE
MIAMI, FLORIDA 33174
TEL. (305) 264-8100 FAX. (305) 262-6978
STORE W04-78CTC

ITEM NO.	PART NO.	QUANTITY	DESCRIPTION	MATERIAL	MANF./SUPPLIER/REMARKS
1	170H342	AS REQD.	FRAME HEAD/HORIZONTAL	6105-T5	-
2	170P176	AS REQD.	FRAME HEAD/SILL	6105-T5	-
3	170J176	AS REQD.	FRAME JAMB	6105-T5	-
4	-	AS REQD.	INT. FILLER CHANNEL (LAM. GLASS)	ALUMINUM	-
4A	-	AS REQD.	INT. FILLER CHANNEL (LAM. INSUL. GLASS)	ALUMINUM	-
5	-	AS REQD.	EXT. FILLER CHANNEL (LAM. GLASS)	ALUMINUM	-
5A	-	AS REQD.	EXT. FILLER CHANNEL (LAM. INSUL. GLASS)	ALUMINUM	-
6	T30U119	AS REQD.	SNAP IN COVER	6063-T6	-
8	170M113	AS REQD.	MALE JAMB/MULLION	6105-T5	-
8A	170M115	AS REQD.	ALT. MALE MULLION	6105-T5	-
9	170M114	AS REQD.	FEMALE JAMB/MULLION	6105-T5	-
9A	170M116	AS REQD.	ALT. FEMALE MULLION	6105-T5	-
10	170R140	AS REQD.	SPLICE	6105-T5	45" LONG
11	B32B070	AS REQD.	SUB-BUCK	6105-T5	-
12	170-116	AS REQD.	5" LONG SETTING PIECE (LAM. INSUL. GLASS)	6105-T5	AT 1/4 POINTS
13	#2	AS REQD.	GLAZING SPACER	POLYPROPYLENE	-
15	1/4"X1-1/4"	AS REQD.	FRAME ASSEMBLY SCREWS	ST. STEEL	PAN HEAD PHILLIPS
16	C5 X 9	AS REQD.	STEEL CHANNEL	-	-
17	-	AS REQD.	SETTING BLOCK (1/16" X 1")	NEOPRENE	AT QUARTER POINTS



FRAME CORNERS



PRODUCT REVISED
 as complying with the Florida
 Building Code
 Acceptance No. 10-1213.10
 Expiration Date: MAR 02, 2016
 Issued Date: Product Control

Engr: JAVAD AHMAD
 CIVIL
 FLA. PE # 70592
 C.A.N. 3538
MAY 10 2011

afC

AL-FAROOQ CORPORATION
 ENGINEERS & PRODUCT DEVELOPMENT
 1235 S.W. 87 AVE
 MIAMI, FLORIDA 33174
 TEL. (305) 264-8100 FAX. (305) 262-9978
 STORE W04-78CTC

PRO-TECH 7SG ALUM CURTAIN WALL SYSTEM (L.M.I.)
CRAWFORD TRACEY CORPORATION
 3301 SW 13TH DRIVE
 DEERFIELD BEACH, FL. 33442-8101
 TEL. (954) 688-6888 FAX. (954) 698-6889

no	date	description	by
D	06.19.08	REV. PER BCCO COMMENTS	
E	08.19.08	NO CHANGE THIS SHEET	
F	05.02.11	NO CHANGE THIS SHEET	
G	05.10.11	REV. PER BNC COMMENTS	

date: 05-25-04
 scale: 3/8" = 1"
 dr. by: HAMID
 chk. by:

drawing no.
W04-78