



**MIAMI-DADE COUNTY**  
**BUILDING CODE COMPLIANCE OFFICE (BCCO)**  
**PRODUCT CONTROL DIVISION**

MIAMI-DADE COUNTY, FLORIDA  
 METRO-DADE FLAGLER BUILDING  
 140 WEST FLAGLER STREET, SUITE 1603  
 MIAMI, FLORIDA 33130-1563  
 (305) 375-2901 FAX (305) 372-6339

**NOTICE OF ACCEPTANCE (NOA)**

[www.miamidade.gov/buildingcode](http://www.miamidade.gov/buildingcode)

**Crawford Tracey Corporation**  
**3301 SW 13<sup>th</sup> Drive**  
**Deerfield Beach, FL 33442**

**SCOPE:**

This NOA is being issued under the applicable rules and regulations governing the use of construction materials. The documentation submitted has been reviewed by Miami-Dade County Product Control Division and accepted by the Board of Rules and Appeals (BORA) to be used in Miami Dade County and other areas where allowed by the Authority Having Jurisdiction (AHJ).

This NOA shall not be valid after the expiration date stated below. The Miami-Dade County Product Control Division (In Miami Dade County) and/or the AHJ (in areas other than Miami Dade County) reserve the right to have this product or material tested for quality assurance purposes. If this product or material fails to perform in the accepted manner, the manufacturer will incur the expense of such testing and the AHJ may immediately revoke, modify, or suspend the use of such product or material within their jurisdiction. BORA reserves the right to revoke this acceptance, if it is determined by Miami-Dade County Product Control Division that this product or material fails to meet the requirements of the applicable building code. This product is approved as described herein, and has been designed to comply with the Florida Building Code, including the High Velocity Hurricane Zone.

**DESCRIPTION: Series "Pro-Tech 7" Aluminum Curtain Wall System – S.M.I.**

**APPROVAL DOCUMENT:** Drawing No. **W07-51**, titled "Pro-Tech 7 Alum Curtain Wall System (S.M.I.)", sheets 1 through 15 of 15, dated 05/29/07, with revision A dated 03/02/10, prepared by Al-Farooq Corporation, signed and sealed by Javad Ahmad, P.E., bearing the Miami-Dade County Product Control Revision stamp with the Notice of Acceptance number and expiration date by the Miami-Dade County Product Control Division.

**MISSILE IMPACT RATING: Small Missile Impact Resistant**

**LABELING:** Each unit shall bear a permanent label with the manufacturer's name or logo, city, state and following statement: "Miami-Dade County Product Control Approved", unless otherwise noted herein.

**RENEWAL** of this NOA shall be considered after a renewal application has been filed and there has been no change in the applicable building code negatively affecting the performance of this product.

**TERMINATION** of this NOA will occur after the expiration date or if there has been a revision or change in the materials, use, and/or manufacture of the product or process. Misuse of this NOA as an endorsement of any product, for sales, advertising or any other purposes shall automatically terminate this NOA. Failure to comply with any section of this NOA shall be cause for termination and removal of NOA.

**ADVERTISEMENT:** The NOA number preceded by the words Miami-Dade County, Florida, and followed by the expiration date may be displayed in advertising literature. If any portion of the NOA is displayed, then it shall be done in its entirety.

**INSPECTION:** A copy of this entire NOA shall be provided to the user by the manufacturer or its distributors and shall be available for inspection at the job site at the request of the Building Official. This NOA revises NOA # **07-0625.01** and consists of this page 1 and evidence pages E-1 and E-2, as well as approval document mentioned above.

The submitted documentation was reviewed by **Manuel Perez, P.E.**



NOA No. 10-0412.04  
 Expiration Date: June 26, 2013  
 Approval Date: June 02, 2010  
 Page 1

Crawford Tracey Corporation

NOTICE OF ACCEPTANCE: EVIDENCE SUBMITTED

**A. DRAWINGS**

1. Manufacturer's die drawings and sections.
2. Drawing No. **W07-51**, titled "Pro-Tech 7 Alum Curtain Wall System (S.M.I.)", sheets 1 through 15 of 15, dated 05/29/07, with revision A dated 03/02/10, prepared by Al-Farooq Corporation, signed and sealed by Javad Ahmad, P.E.

**B. TESTS**

1. Test reports on:
  - 1) Air Infiltration Test, per FBC, TAS 202-94
  - 2) Uniform Static Air Pressure Test, Loading per FBC TAS 202-94
  - 3) Water Resistance Test, per FBC, TAS 202-94
  - 4) Large Missile Impact Test per FBC, TAS 201-94
  - 5) Small Missile Impact Test per FBC, TAS 201-94
  - 6) Cyclic Wind Pressure Loading per FBC, TAS 203-94along with marked-up drawings and installation diagram of an Aluminum Curtain Wall System, prepared by American Test Lab of South Florida, Test Reports No. **ATL-0912.01-05**, dated 01/31/06, signed and sealed by William R. Mehner, P.E. and Henry Hattem, P.E.

*(Submitted under previous NOA # 07-0625.01)*

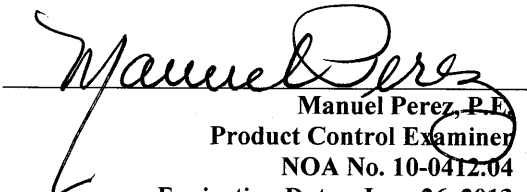
2. Test reports on:
  - 1) Air Infiltration Test, per FBC, TAS 202-94
  - 2) Uniform Static Air Pressure Test, Loading per FBC TAS 202-94
  - 3) Water Resistance Test, per FBC, TAS 202-94
  - 4) Large Missile Impact Test per FBC, TAS 201-94
  - 5) Small Missile Impact Test per FBC, TAS 201-94
  - 6) Cyclic Wind Pressure Loading per FBC, TAS 203-94along with marked-up drawings and installation diagram of an Aluminum Curtain Wall System, prepared by American Test Lab of South Florida, Test Reports No. **ATL-1115.01-01**, dated 02/13/02, **ATL-0521.01-02** and **ATL-0719.02-02**, dated 09/11/02 and **ATL-1129.01-04**, dated 01/05/05, all signed and sealed by William R. Mehner, P.E. and Henry Hattem, P.E.

*(Submitted under previous NOA # 03-0314.01)*

**C. CALCULATIONS**

1. Anchor verification calculations and structural analysis, complying with FBC-2007, prepared by Al-Farooq Corporation, dated 2/26/10, signed and sealed by Javad Ahmad, P.E.

**Complies with ASTM E1300-02/04**

  
Manuel Perez, P.E.  
Product Control Examiner  
NOA No. 10-0412.04  
Expiration Date: June 26, 2013  
Approval Date: June 02, 2010

**Crawford Tracey Corporation**

**NOTICE OF ACCEPTANCE: EVIDENCE SUBMITTED**

**D. QUALITY ASSURANCE**

1. Miami Dade Building Code Compliance Office (BCCO).

**E. MATERIAL CERTIFICATIONS**

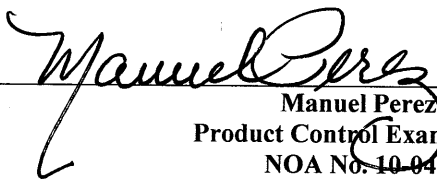
1. Notice of Acceptance No. **05-1208.02** issued to **E.I. DuPont DeNemours & Co., Inc.** for their "**DuPont Butacite PVB Interlayer**" dated 01/05/06, expiring on 12/11/10.

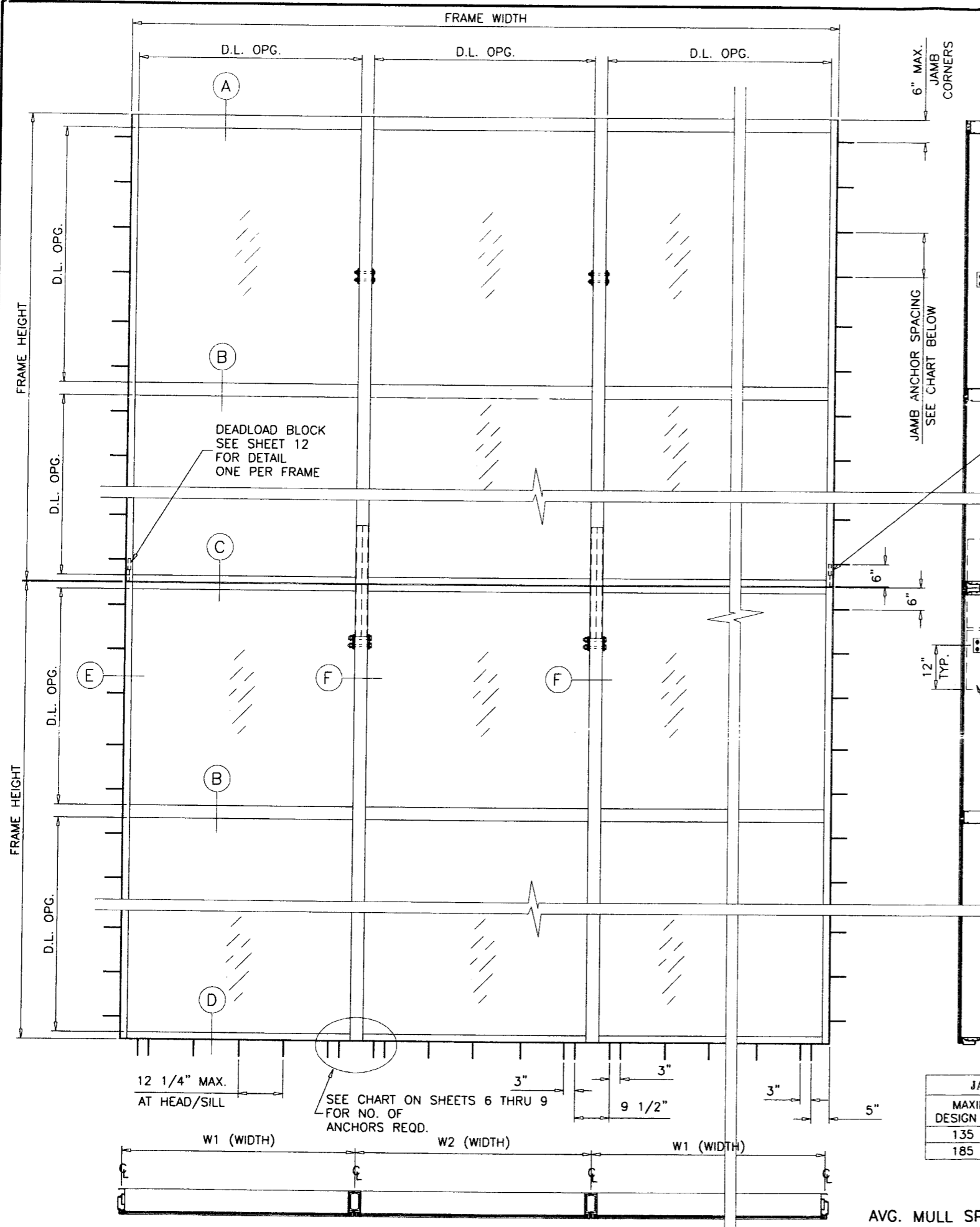
**F. STATEMENTS**

1. Statement letter of conformance and no financial interest, dated February 26, 2010, signed and sealed by Javad Ahmad, P.E.
2. Laboratory compliance letter for Test Report No. **ATLSF-0912.01-05**, issued by American Test Lab of South Florida, dated 01/31/06, signed and sealed by William R. Mehner, P.E. and Henry Hattem, P.E.
3. Laboratory compliance letter for Test Report No. **ATLSF-1129.01-04**, issued by American Test Lab of South Florida, dated 01/05/05, signed and sealed by William R. Mehner, P.E.
4. Laboratory compliance letter for Test Report No. **ATLSF-0719.02-02**, issued by American Test Lab of South Florida, dated 09/11/02, signed and sealed by William R. Mehner, P.E.
5. Laboratory compliance letter for Test Report No. **ATLSF-0521.01-02**, issued by American Test Lab of South Florida, dated 09/11/02, signed and sealed by William R. Mehner, P.E. and Henry Hattem, P.E.
6. Laboratory compliance letter for Test Report No. **ATLSF-1115.01-01**, issued by American Test Lab of South Florida, dated 02/13/02, signed and sealed by William R. Mehner, P.E. and Henry Hattem, P.E.

**G. OTHER**

1. Notice of Acceptance No. **07-0625.01**, issued to Crawford Tracey Corporation for their Series "Pro-Tech 7" Aluminum Curtain Wall System – S.M.I., approved on 03/06/08 and expiring on 06/26/13.

  
Manuel Perez, P.E.  
Product Control Examiner  
NOA No. 10-0412.04  
Expiration Date: June 26, 2013  
Approval Date: June 02, 2010



JAMB ANCHOR SPACING		
MAXIMUM DESIGN LOADS	ANCHORS TYPE 'A'	ANCHORS TYPE 'B' & 'C'
135 PSF	9" O.C.	10" O.C.
185 PSF	6" O.C.	7" O.C.

$$\text{AVG. MULL SPACING} = \frac{W1 + W2}{2}$$

### PRO-TECH 7 ALUM CURTAIN WALL SYSTEM

CURTAIN WALL SYSTEM IS RATED FOR SMALL MISSILE IMPACT. MIAMI-DADE COUNTY APPROVED IMPACT RESISTANT SHUTTERS REQUIRED FOR INSTALLATIONS UP TO 30 FT. OF GRADE. SHUTTERS NOT REQD. FOR INSTALLATIONS ABOVE 30 FT. OF GRADE. CODE REQUIREMENTS FOR SAFEGUARDS MUST BE OBSERVED.

THIS PRODUCT HAS BEEN DESIGNED AND TESTED TO COMPLY WITH THE REQUIREMENTS OF THE FLORIDA BUILDING CODE 2007 EDITION INCLUDING HIGH VELOCITY HURRICANE ZONE (HVHZ).

WOOD BUCKS BY OTHERS, MUST BE ANCHORED PROPERLY TO TRANSFER LOADS TO THE STRUCTURE.

ANCHORS SHALL BE AS LISTED, SPACED AS SHOWN ON DETAILS, ANCHORS EMBEDMENT TO BASE MATERIAL SHALL BE BEYOND WALL DRESSING OR STUCCO.

ANCHORING OR LOADING CONDITIONS NOT SHOWN IN THESE DETAILS ARE NOT PART OF THIS APPROVAL.

A LOAD DURATION INCREASE IS USED IN DESIGN OF ANCHORS INTO WOOD ONLY.

MATERIALS INCLUDING BUT NOT LIMITED TO STEEL/METAL SCREWS, THAT COME INTO CONTACT WITH OTHER DISSIMILAR MATERIALS SHALL MEET THE REQUIREMENTS OF 2007 FLORIDA BLDG. CODE SECTION 2003.8.4.

#### INSTRUCTIONS:

USE CHARTS AS FOLLOWS.

- STEP 1** DETERMINE DESIGN WIND LOAD REQUIREMENT BASED ON WIND VELOCITY, BLDG. HEIGHT, WIND ZONE USING APPLICABLE ASCE 7 STANDARD.
- STEP 2** CHECK MULLION CAPACITY FOR A GIVEN SPACING AND HEIGHT USING CHARTS ON SHEETS 2 & 3 FOR SINGLE SPANS, AND CHARTS ON SHEET 4 FOR EQUAL MULTIPLE SPANS.
- STEP 3** SEE CHARTS ON SHEET 5 FOR DESIGN LOAD CAPACITY OF DESIRED GLASS SIZE BASED ON APPLICABLE WIND DURATION.
- STEP 4** USING CHART ON SHEET 6 THRU 9 SELECT ANCHOR OPTION WITH DESIGN RATING MORE THAN DESIGN LOAD SPECIFIED IN STEP 1 ABOVE.
- STEP 5** THE LOWEST VALUE RESULTING FROM STEPS 2, 3 AND 4 SHALL APPLY TO ENTIRE SYSTEM.

LAMINATED GLASS  
SMALL MISSILE IMPACT

Engr: JAVAD AHMAD  
CIVIL  
FLA. PE # 70592  
C.A.N. 3538

9A  
MAR 18 2010

REVISED  
as req. with the Florida  
10-0412.04  
June 26, 2013  
Manned Perz  
Product Control

**a f c**  
**AL-FAROOQ CORPORATION**  
ENGINEERS & PRODUCT DEVELOPMENT  
1235 S.W. 87 AVE  
MIAMI, FLORIDA 33174  
TEL. (305) 264-8100 FAX. (305) 262-6978  
STORE \W07-51CTC

PRO-TECH 7 ALUM CURTAIN WALL SYSTEM (S.M.I.)  
**CRAWFORD TRACEY CORPORATION**  
3301 SW 13TH DRIVE  
DEERFIELD BEACH, FL. 33442-8101  
TEL. (954) 698-6888 FAX. (954) 698-6889

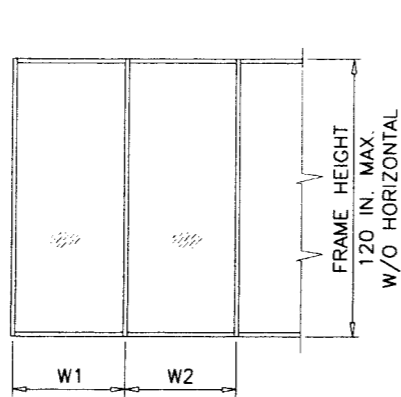
no	date	description
A	03.02.10	UPDATED FOR 2007 FBC

revisions:  
date: 05-29-07  
scale: 3/8" = 1'-0"  
dr. by: HAMID  
chk. by:

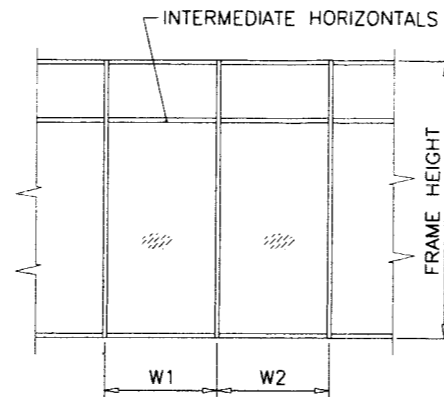
drawing no.  
**W07-51**

sheet 1 of 15

MULLION LOAD CAPACITY - PSF SINGLE SPANS (WITH OR WITHOUT INTERMEDIATE HORIZONTALS)				
NOMINAL DIMS.		WITHOUT REINFORCING		
WIDTH (W)	FRAME HEIGHT	EXT.(+)	INT.(-)	
36"	72"	120.0	170.0	
39"		120.0	170.0	
42"		120.0	170.0	
45"		120.0	170.0	
48"		120.0	170.0	
51"		120.0	170.0	
54"		120.0	170.0	
57"		120.0	170.0	
60"	78"	120.0	170.0	
63"		120.0	170.0	
36"		84"	120.0	170.0
39"			120.0	170.0
42"			120.0	170.0
45"			120.0	170.0
48"			120.0	170.0
51"			120.0	170.0
54"	120.0		170.0	
57"	120.0		170.0	
36"	90"	120.0	170.0	
39"		120.0	170.0	
42"		120.0	170.0	
45"		120.0	170.0	
48"		120.0	170.0	
36"	96"	120.0	170.0	
39"		120.0	170.0	
42"		120.0	170.0	
48"		120.0	170.0	
36"	102"	120.0	170.0	
39"		120.0	170.0	
45"		120.0	170.0	
36"	106"	120.0	170.0	
39"		120.0	170.0	
42"		120.0	170.0	
44"		120.0	170.0	



WIDTH (W) = W1  
AT FRAME JAMB

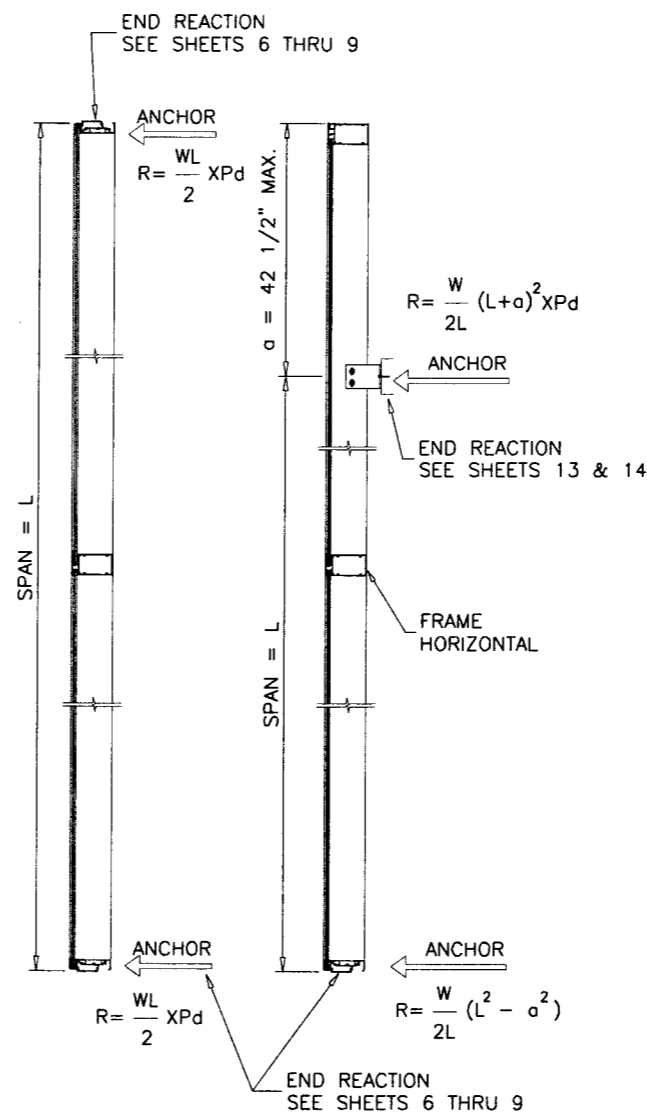


WIDTH (W) =  $\frac{W1 + W2}{2}$   
AT FRAME MULLION



WITHOUT REINFORCING

Ix IN <sup>4</sup>	Sx IN <sup>3</sup>
25.0382	6.5475



Engr: JAVAD AHMAD  
CIVIL  
FLA. PE # 70592  
C.A.N. 3538

MAR 18 2010

PRODUCT REVIEWED  
in compliance with the Florida  
Building Code  
Acceptance No. 10-0412.04  
Expiration Date June 26, 2013

By: *Manuel Perez*  
Miami Dade Product Control  
Division

**af c**  
**AL-FAROOQ CORPORATION**  
ENGINEERS & PRODUCT DEVELOPMENT  
1235 S.W. 87 AVE  
MIAMI, FLORIDA 33174  
TEL. (305) 264-8100 FAX. (305) 262-6978  
STORE \ W02 - 109CTC

PRO-TECH 7 ALUM CURTAIN WALL SYSTEM  
**CRAWFORD TRACEY CORPORATION**  
3301 SW 13TH DRIVE  
DEERFIELD BEACH, FL. 33442-8101  
TEL. (954) 698-6888 FAX. (954) 698-6889

no	date	by	description
A	5.27.03		REV. PER BCCO COMMENTS
B	01.23.07		UPDATED FOR 2004 FBC
C	02.12.10		NO CHANGE THIS SHEET

date: 06-11-02  
scale: -  
dr. by: HAMID  
chk. by:

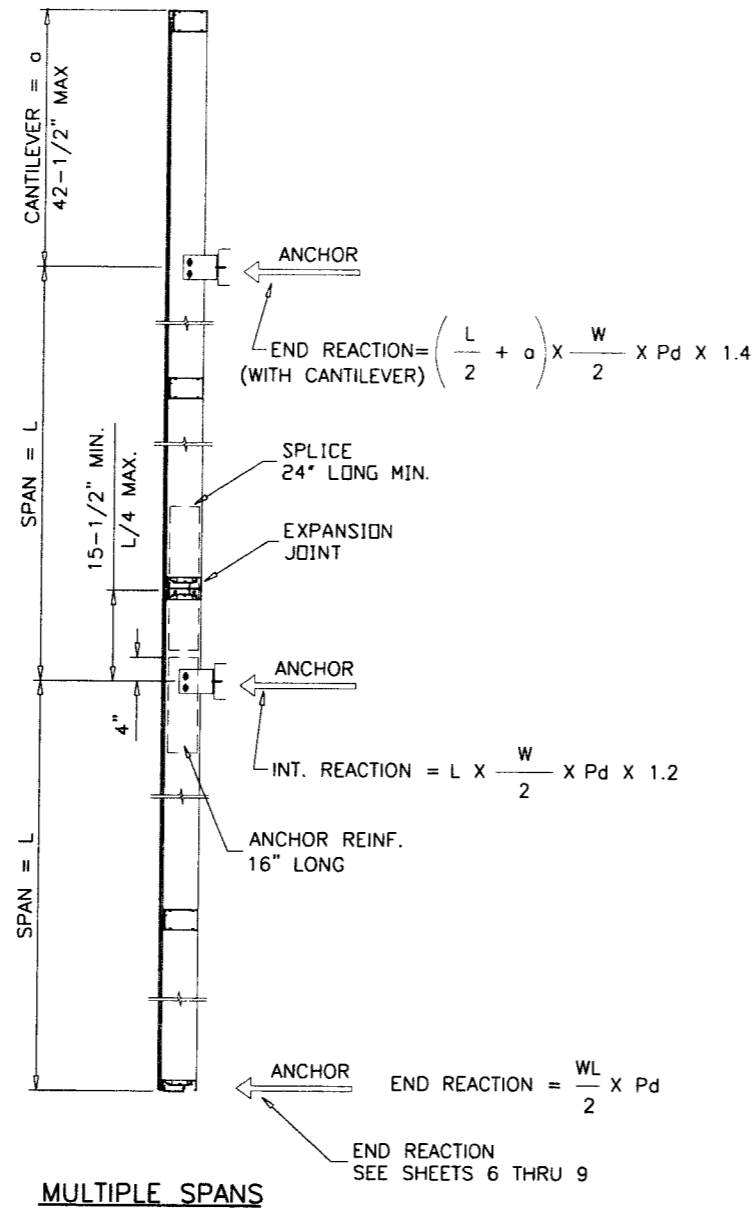
drawing no.  
**W02-109**

sheet 2 of 15



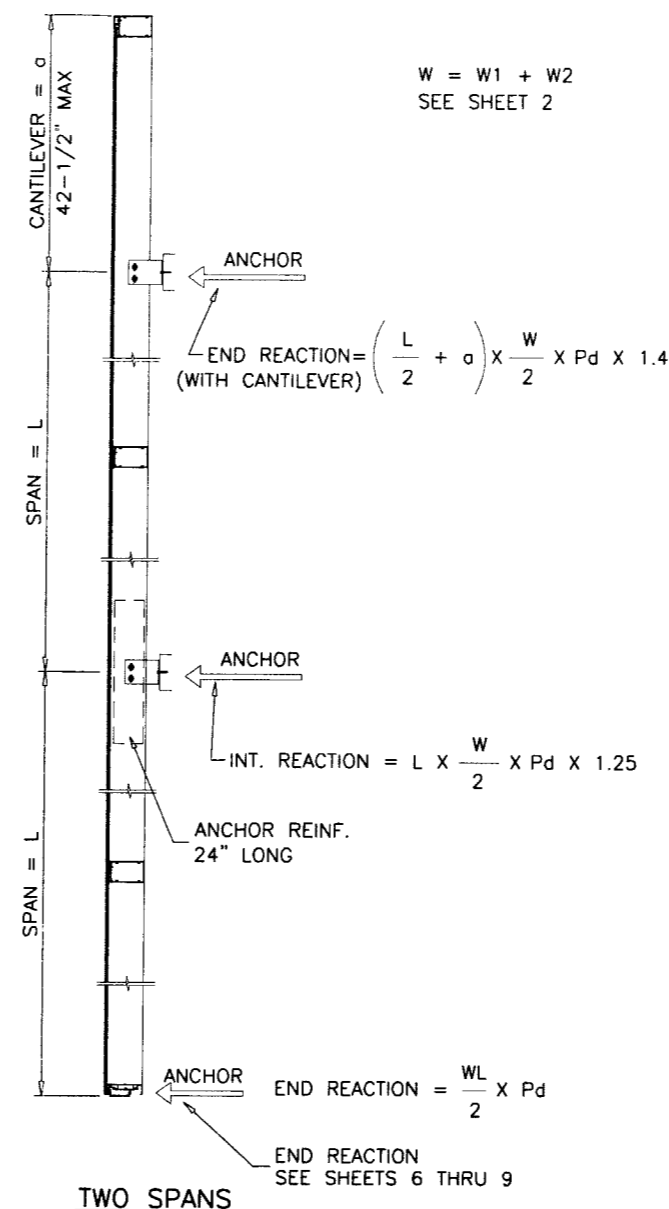
MULLION LOAD CAPACITY - PSF MULTIPLE SPANS			
AVERAGE MULL SPACING	SPAN = L	WITHOUT REINFORCING	WITH ANCHOR REINF.
		EXT.(+)/INT.(-)	EXT.(+)/INT.(-)
36"	120"	120.0	120.0
42"		120.0	120.0
48"		120.0	120.0
54"		120.0	120.0
60"		120.0	120.0
66"		120.0	120.0
72"		117.4	117.4
36"	126"	120.0	120.0
42"		120.0	120.0
48"		120.0	120.0
54"		120.0	120.0
60"		120.0	120.0
66"		120.0	120.0
72"		110.9	110.9
36"	132"	120.0	120.0
42"		120.0	120.0
48"		120.0	120.0
54"		120.0	120.0
60"		120.0	120.0
66"		114.8	114.8
72"		105.2	105.2
36"	138"	120.0	120.0
42"		120.0	120.0
48"		120.0	120.0
54"		120.0	120.0
60"		120.0	120.0
66"		109.2	109.2
72"		100.1	100.1
36"	144"	120.0	120.0
42"		120.0	120.0
48"		120.0	120.0
54"		120.0	120.0
60"		110.2	114.5
66"		100.2	104.1
72"		91.9	95.4
36"	150"	120.0	120.0
42"		120.0	120.0
48"		120.0	120.0
54"		112.1	120.0
60"		100.9	109.5
66"		91.7	99.5
72"		84.1	91.2
36"	156"	120.0	120.0
42"		120.0	120.0
48"		115.8	120.0
54"		102.9	116.5
60"		92.6	104.9
66"	84.2	95.3	
36"	162"	120.0	120.0
42"		120.0	120.0
48"		106.8	120.0
54"		94.9	111.8
60"		85.4	100.6
66"	77.6	91.5	
36"	168"	120.0	120.0
42"		112.9	120.0
48"		98.8	120.0
54"		87.8	107.5
60"		79.0	96.8

Ix IN<sup>4</sup> 25.0382  
Sx IN<sup>3</sup> 6.5475



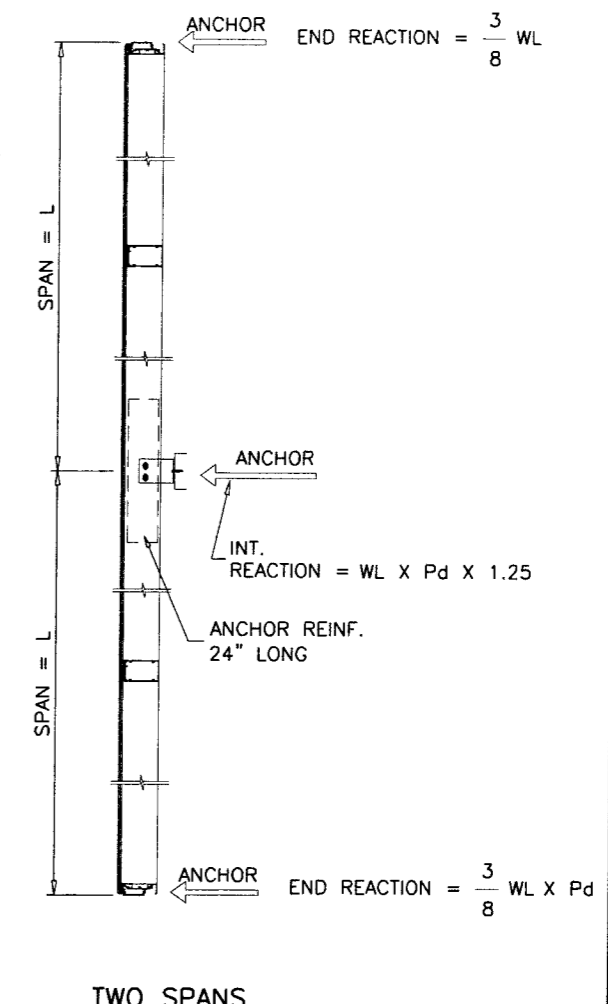
**MULTIPLE SPANS**

MULTIPLE SPANS WITH OR WITHOUT CANTILEVER  
USE TABLE ON THIS SHEET.



**TWO SPANS**

TWO SPANS WITH CANTILEVER  
AND WITHOUT SPLICE/EXPANSION JOINT  
USE TABLE ON THIS SHEET.

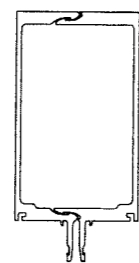


**TWO SPANS**

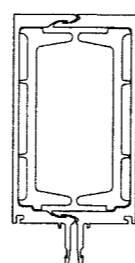
TWO SPANS WITHOUT CANTILEVER  
AND WITHOUT SPLICE/EXPANSION JOINT  
USE TABLE ON THIS SHEET.

UNEQUAL SPANS TO BE CHECKED ON JOB TO JOB BASIS

END REACTIONS MAY CHANGE WITH LOCATION OF  
EXPANSION JOINT AND LENGTH OF CANTILEVER  
WORST CONDITION SHOWN.



WITHOUT REINFORCING



WITH ANCHOR REINFORCING  
LENGTH = 16" OR 24" AT ANCHOR LOCATION

W = W1 + W2  
SEE SHEET 2

Engr: JAVAD AHMAD  
CIVIL  
FLA. PE # 70592  
C.A.N. 3538

MAR 18 2010

PRODUCT REVISED  
to comply with the Florida  
Building Code  
Acceptance No. 10-0412.04  
Expiration Date June 26, 2013

Manuel Perez  
Miami Code Product Control

PRO-TECH 7 ALUM CURTAIN WALL SYSTEM  
**CRAWFORD TRACEY CORPORATION**  
3301 SW 13TH DRIVE  
DEERFIELD BEACH, FL. 33442-8101  
TEL. (954) 698-6888 FAX. (954) 698-6889

no.	date	description
A	5.27.03	REV. PER BCCO COMMENTS
B	01.23.07	UPDATED FOR 2004 FBC
C	02.12.10	NO CHANGE THIS SHEET

date: 06-11-02  
scale: -  
dr. by: HAMID  
chk. by:

drawing no.  
**W02-109**

sheet 4 of 15

**af c**  
**AL-FAROOQ CORPORATION**  
ENGINEERS & PRODUCT DEVELOPMENT  
1235 S.W. 87 AVE  
MIAMI, FLORIDA 33174  
TEL. (305) 264-8100 FAX. (305) 262-6978

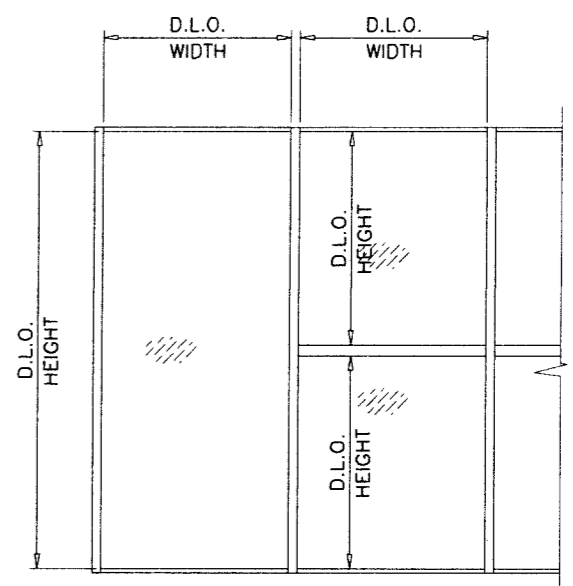
STORE\W02-109CTC

GLASS LOAD CAPACITY - PSF		
NOMINAL DIMS.		GLASS TYPE 'C'
D.L.O. WIDTH	D.L.O. HEIGHT	EXT. (+) INT. (-)
30"	54"	185.0
33"		185.0
36"		185.0
39"		185.0
42"		185.0
45"		185.0
48"		120.0
51"		120.0
54"		120.0
57"		120.0
60"		120.0
63"		120.0
66"		120.0
69"	120.0	
30"	60"	185.0
33"		185.0
36"		185.0
39"		185.0
42"		120.0
45"		120.0
48"		120.0
51"		120.0
54"		120.0
57"		120.0
60"		120.0
63"		120.0
66"		120.0
69"	120.0	
30"	66"	185.0
33"		185.0
36"		185.0
42"		120.0
45"		120.0
48"		120.0
51"		120.0
54"		120.0
57"		120.0
60"		120.0
63"		120.0
66"		120.0
69"		120.0
30"	72"	185.0
33"		185.0
42"		120.0
45"		120.0
48"		120.0
51"		120.0
54"		120.0
57"		120.0
60"		120.0
63"		120.0
66"		120.0
69"		120.0

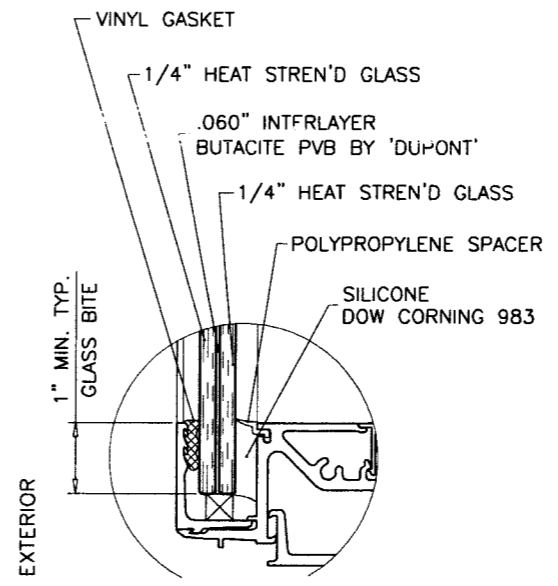
GLASS LOAD CAPACITY - PSF			
NOMINAL DIMS.		GLASS TYPE 'C'	
D.L.O. WIDTH	D.L.O. HEIGHT	EXT. (+) INT. (-)	
42"	78"	120.0	
45"		120.0	
48"		120.0	
51"		120.0	
54"		120.0	
57"		120.0	
60"		120.0	
63"		120.0	
66"		120.0	
69"		120.0	
42"		84"	120.0
45"			120.0
48"			120.0
51"	120.0		
54"	120.0		
57"	120.0		
60"	120.0		
63"	120.0		
66"	120.0		
69"	120.0		
30"	90"		120.0
33"			120.0
36"			120.0
39"		120.0	
42"		120.0	
45"		120.0	
48"		120.0	
51"		120.0	
54"		120.0	
57"		120.0	
60"		120.0	
63"		120.0	
66"		120.0	
69"	120.0		
30"	96"	120.0	
33"		120.0	
36"		120.0	
39"		120.0	
42"		120.0	
45"		120.0	
48"		120.0	
51"		120.0	
54"		120.0	
57"		120.0	
60"		116.4	
63"		112.9	
66"		110.1	
69"	108.0		

GLASS LOAD CAPACITY - PSF			
NOMINAL DIMS.		GLASS TYPE 'C'	
D.L.O. WIDTH	D.L.O. HEIGHT	EXT. (+) INT. (-)	
30"	102"	120.0	
33"		120.0	
36"		120.0	
39"		120.0	
42"		120.0	
45"		120.0	
48"		120.0	
51"		120.0	
54"		118.5	
57"		113.4	
60"		109.2	
63"		105.9	
66"		103.2	
69"	101.3		
30"	108"	120.0	
33"		120.0	
36"		120.0	
39"		120.0	
42"		120.0	
45"		120.0	
48"		120.0	
51"		117.7	
54"		111.8	
57"		106.4	
60"		100.9	
63"		98.8	
66"		96.9	
30"	114"	120.0	
33"		120.0	
36"		120.0	
39"		120.0	
42"		120.0	
45"		120.0	
48"		119.5	
51"		111.9	
54"		105.6	
57"		97.9	
60"		95.3	
63"		93.3	
42"		120"	120.0
45"	120.0		
48"	114.1		
51"	106.6		
54"	98.5		
57"	94.0		
60"	92.2		
42"	126"		120.0
45"			119.1
48"			109.7
51"			102.4
54"			95.2
57"			90.6

GLASS LOAD CAPACITY - PSF			
NOMINAL DIMS.		GLASS TYPE 'C'	
D.L.O. WIDTH	D.L.O. HEIGHT	EXT. (+) INT. (-)	
42"	132"	120.0	
45"		114.4	
48"		106.1	
51"		98.3	
54"		92.4	
42"	138"	120.0	
45"		112.5	
48"		103.5	
51"		95.9	
54"		92.4	
42"	144"	120.0	
45"		111.0	
48"		101.2	
42"		150"	120.0
45"			109.4
48"	100.6		



NOTE:  
GLASS CAPACITIES ON THIS SHEET ARE  
BASED ON ASTM E1300-04 (3 SEC. GUSTS).



GLASS TYPE 'C'  
VISION & SPANDREL

Engr: JAVAD AHMAD  
CIVIL  
FLA. PE # 70592  
C.A.N. 3538

*J.A.*  
MAR 18 2010

PRODUCT REVISION  
as complying with the Florida  
Building Code  
Acceptance No. 10-0412.04  
Expiration Date June 10, 2013

By *Manuel Perez*  
Miami Code Product Control  
Division

**af c**

**AL-FAROOQ CORPORATION**  
ENGINEERS & PRODUCT DEVELOPMENT  
1235 S.W. 87 AVE  
MIAMI, FLORIDA 33174  
TEL. (305) 264-8100 FAX. (305) 262-6978

STORE W07-51CTC

PRO-TECH 7 ALUM CURTAIN WALL SYSTEM (S.M.I.)

**CRAWFORD TRACEY CORPORATION**  
3301 SW 13TH DRIVE  
DEERFIELD BEACH, FL. 33442-8101  
TEL. (954) 698-6888 FAX. (954) 698-6889

no	date	description
A	03.02.10	NO CHANGE THIS SHEET

revisions:

date: 05-29-07  
scale: 3/8" = 1"  
dr. by: HAMID  
chk. by:

drawing no.  
**W07-51**

sheet 5 of 15

ANCHOR LOAD CAPACITY - PSF EXT.(+) & INT.(-)								
NOMINAL DIMS.		ANCHORS TYPE 'A'			ANCHORS TYPE 'B'		ANCHORS TYPE 'C'	
WIDTH (W)	FRAME HEIGHT	A3	A4	A5	B2	B3	C2	C3
36"	72"	185.0	185.0	185.0	185.0	185.0	185.0	185.0
39"		185.0	185.0	185.0	185.0	185.0	185.0	185.0
42"		185.0	185.0	185.0	185.0	185.0	185.0	185.0
45"		185.0	185.0	185.0	185.0	185.0	185.0	185.0
48"		182.0	185.0	185.0	185.0	185.0	185.0	185.0
51"		171.3	185.0	185.0	180.3	185.0	185.0	185.0
54"		173.3	185.0	185.0	170.3	185.0	185.0	185.0
57"		164.2	185.0	185.0	161.3	185.0	185.0	185.0
60"		156.0	185.0	185.0	167.2	185.0	185.0	185.0
63"		148.6	185.0	185.0	159.2	185.0	185.0	185.0
66"		151.3	179.6	185.0	152.0	185.0	185.0	185.0
69"		144.7	171.8	185.0	157.5	185.0	185.0	185.0
72"	138.7	173.3	185.0	150.9	185.0	185.0	185.0	
36"	78"	185.0	185.0	185.0	185.0	185.0	185.0	185.0
39"		185.0	185.0	185.0	185.0	185.0	185.0	185.0
42"		185.0	185.0	185.0	183.7	185.0	185.0	185.0
45"		179.2	185.0	185.0	171.5	185.0	185.0	185.0
48"		168.0	185.0	185.0	176.8	185.0	185.0	185.0
51"		158.1	185.0	185.0	166.4	185.0	185.0	185.0
54"		160.0	185.0	185.0	157.2	185.0	185.0	185.0
57"		151.6	181.9	185.0	148.9	185.0	185.0	185.0
60"		144.0	182.4	185.0	154.3	185.0	185.0	185.0
63"		137.1	173.7	185.0	147.0	183.7	183.7	185.0
66"		139.6	165.8	185.0	140.3	185.0	185.0	185.0
69"		133.6	158.6	185.0	145.4	178.9	178.9	185.0
72"	128.0	160.0	184.0	139.3	171.5	171.5	185.0	
36"	84"	185.0	185.0	185.0	185.0	185.0	185.0	185.0
39"		178.3	185.0	185.0	183.7	185.0	185.0	185.0
42"		178.3	185.0	185.0	170.6	185.0	185.0	185.0
45"		166.4	185.0	185.0	159.2	185.0	185.0	185.0
48"		156.0	185.0	185.0	164.2	185.0	185.0	185.0
51"		146.8	185.0	185.0	154.6	185.0	185.0	185.0
54"		148.6	178.3	185.0	146.0	185.0	185.0	185.0
57"		140.8	168.9	185.0	138.3	185.0	185.0	185.0
60"		133.7	169.4	185.0	143.3	179.1	179.1	185.0
63"		127.3	161.3	185.0	136.5	170.6	170.6	185.0
66"		129.7	154.0	185.0	130.3	173.7	173.7	185.0
69"		124.0	147.3	178.3	135.0	166.2	166.2	185.0
72"	118.9	148.6	170.9	129.4	159.2	159.2	182.5	
36"	90"	180.3	185.0	185.0	185.0	185.0	185.0	185.0
39"		166.4	185.0	185.0	171.5	185.0	185.0	185.0
42"		166.4	185.0	185.0	159.2	185.0	185.0	185.0
45"		155.3	185.0	185.0	148.6	185.0	185.0	185.0
48"		145.6	185.0	185.0	153.3	185.0	185.0	185.0
51"		137.0	176.2	185.0	144.3	183.6	183.6	185.0
54"		138.7	166.4	185.0	136.2	185.0	185.0	185.0
57"		131.4	157.6	185.0	129.1	176.0	176.0	185.0
60"		124.8	158.1	183.0	133.8	167.2	167.2	185.0
63"		118.9	150.6	174.3	127.4	159.2	159.2	182.5
66"		121.0	143.7	174.0	121.6	162.1	162.1	185.0
69"		115.8	137.5	166.4	126.0	155.1	155.1	177.7
72"	110.9	138.7	159.5	120.8	148.6	148.6	170.3	

ANCHOR LOAD CAPACITY - PSF EXT.(+) & INT.(-)								
NOMINAL DIMS.		ANCHORS TYPE 'A'			ANCHORS TYPE 'B'		ANCHORS TYPE 'C'	
WIDTH (W)	FRAME HEIGHT	A3	A4	A5	B2	B3	C2	C3
36"	96"	169.0	185.0	185.0	174.2	185.0	185.0	185.0
39"		156.0	185.0	185.0	160.8	185.0	185.0	185.0
42"		156.0	185.0	185.0	149.3	185.0	185.0	185.0
45"		145.6	176.8	185.0	139.3	185.0	185.0	185.0
48"		136.5	175.5	185.0	143.7	182.9	182.9	185.0
51"		128.5	165.2	185.0	135.2	172.1	172.1	185.0
54"		130.0	156.0	185.0	127.7	174.2	174.2	185.0
57"		123.2	147.8	180.6	121.0	165.0	165.0	185.0
60"		117.0	148.2	171.6	125.4	156.8	156.8	179.6
63"		111.4	141.1	163.4	119.4	149.3	149.3	171.1
66"		113.5	134.7	163.1	114.0	152.0	152.0	174.2
69"		108.5	128.9	156.0	118.1	145.4	145.4	166.6
72"	104.0	130.0	149.5	113.2	139.3	139.3	159.7	
36"	102"	159.1	185.0	185.0	163.9	185.0	185.0	185.0
39"		146.8	185.0	185.0	151.3	185.0	185.0	185.0
42"		146.8	178.3	185.0	140.5	185.0	185.0	185.0
45"		137.0	166.4	185.0	131.1	183.6	183.6	185.0
48"		128.5	165.2	185.0	135.2	172.1	172.1	185.0
51"		120.9	155.5	181.4	127.3	162.0	162.0	185.0
54"		122.4	146.8	179.5	120.2	163.9	163.9	185.0
57"		115.9	139.1	170.0	113.9	155.3	155.3	178.0
60"		110.1	139.5	161.5	118.0	147.5	147.5	169.1
63"		104.9	132.8	153.8	112.4	140.5	140.5	161.0
66"		106.8	126.8	153.5	107.3	143.1	143.1	163.9
69"		102.1	121.3	146.8	111.2	136.8	136.8	156.8
72"	97.9	122.4	140.7	106.5	131.1	131.1	150.3	

SEE SHEET 7 FOR LARGER HEIGHTS

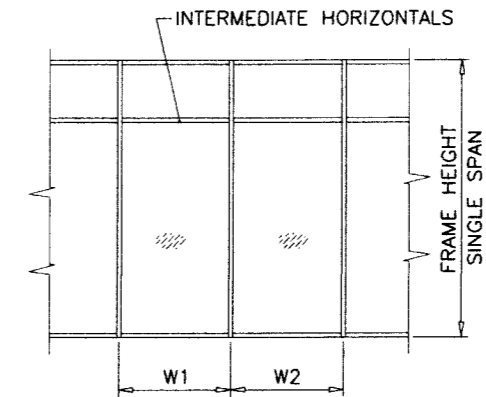
ANCHORS TYPES: SEE SHEET 7 FOR DESCRIPTION

A3 = (3) ANCHORS TYPE 'A' AT EACH SIDE OF MULLION  
A4 = (4) ANCHORS TYPE 'A' AT EACH SIDE OF MULLION  
A5 = (5) ANCHORS TYPE 'A' AT EACH SIDE OF MULLION

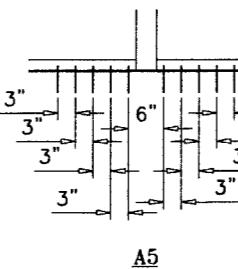
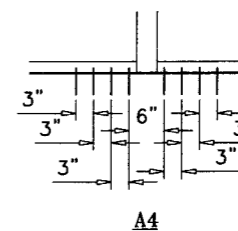
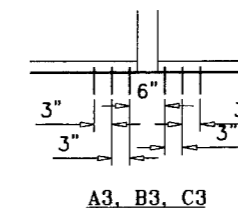
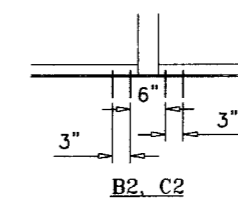
B2 = (2) ANCHORS TYPE 'B' AT EACH SIDE OF MULLION  
B3 = (3) ANCHORS TYPE 'B' AT EACH SIDE OF MULLION

C2 = (2) ANCHORS TYPE 'C' AT EACH SIDE OF MULLION  
C3 = (3) ANCHORS TYPE 'C' AT EACH SIDE OF MULLION

ALL OTHER ANCHORS TO BE SPACED AS PER ELEVATION.



$$\text{WIDTH (W)} = \frac{W1 + W2}{2}$$



Engr: JAVAD AHMAD  
CIVIL  
FLA. PE # 70592  
C.A.N. 3538

MAR 18 2010

PRODUCT REVIEWED  
as complying with the Florida  
Building Code  
Acceptance No. 10-0412.04  
Expiration Date June 26, 2013  
By: *Muhammad*  
Metal Fabrication Consultant  
Division

**afC**  
**AL-FAROOQ CORPORATION**  
ENGINEERS & PRODUCT DEVELOPMENT  
1235 S.W. 87 AVE  
MIAMI, FLORIDA 33174  
TEL. (305) 264-8100 FAX. (305) 262-6978  
STORE/W07-51CTC

PRO-TECH 7 ALUM CURTAIN WALL SYSTEM (S.M.I.)  
**CRAWFORD TRACEY CORPORATION**  
3301 SW 13TH DRIVE  
DEERFIELD BEACH, FL. 33442-8101  
TEL. (954) 698-6888 FAX. (954) 698-6889

no	date	by	description
A	03.02.10		NO CHANGE THIS SHEET

date: 05-29-07  
scale: 1  
dr. by: HAMID  
chk. by:

drawing no.  
**W07-51**  
sheet 6 of 15

ANCHOR LOAD CAPACITY - PSF EXT.(+) & INT.(-)								
NOMINAL DIMS.		ANCHORS TYPE 'A'			ANCHORS TYPE 'B'		ANCHORS TYPE 'C'	
WIDTH (W)	FRAME HEIGHT	A3	A4	A5	B2	B3	C2	C3
36"	108"	135.0	135.0	135.0	135.0	135.0	135.0	135.0
39"		135.0	135.0	135.0	135.0	135.0	135.0	135.0
42"		135.0	135.0	135.0	132.7	135.0	135.0	135.0
45"		129.4	135.0	135.0	123.9	135.0	135.0	135.0
48"		121.3	135.0	135.0	127.7	135.0	135.0	135.0
51"		114.2	135.0	135.0	120.2	135.0	135.0	135.0
54"		115.6	135.0	135.0	113.5	135.0	135.0	135.0
57"		109.5	131.4	135.0	107.6	135.0	135.0	135.0
60"		104.0	131.7	135.0	111.5	135.0	135.0	135.0
63"		99.0	125.5	135.0	106.2	135.0	135.0	135.0
66"		100.8	119.8	135.0	101.3	135.0	135.0	135.0
69"		96.5	114.6	135.0	105.0	129.2	129.2	135.0
72"	92.4	115.6	132.9	100.6	123.9	123.9	135.0	
36"	114"	135.0	135.0	135.0	135.0	135.0	135.0	135.0
39"		131.4	135.0	135.0	135.0	135.0	135.0	135.0
42"		131.4	135.0	135.0	125.7	135.0	135.0	135.0
45"		122.6	135.0	135.0	117.3	135.0	135.0	135.0
48"		114.9	135.0	135.0	121.0	135.0	135.0	135.0
51"		108.2	135.0	135.0	113.9	135.0	135.0	135.0
54"		109.5	131.4	135.0	107.6	135.0	135.0	135.0
57"		103.7	124.5	135.0	101.9	135.0	135.0	135.0
60"		98.5	124.8	135.0	105.6	132.0	132.0	135.0
63"		93.8	118.9	135.0	100.6	125.7	125.7	135.0
66"		95.5	113.5	135.0	96.0	128.0	128.0	135.0
69"		91.4	108.5	131.4	99.5	122.4	122.4	135.0
72"	87.6	109.5	125.9	95.3	117.3	117.3	134.5	
36"	120"	135.0	135.0	135.0	135.0	135.0	135.0	135.0
39"		124.8	135.0	135.0	128.6	135.0	135.0	135.0
42"		124.8	135.0	135.0	119.4	135.0	135.0	135.0
45"		116.5	135.0	135.0	111.5	135.0	135.0	135.0
48"		109.2	135.0	135.0	115.0	135.0	135.0	135.0
51"		102.8	132.1	135.0	108.2	135.0	135.0	135.0
54"		104.0	124.8	135.0	102.2	135.0	135.0	135.0
57"		98.5	118.2	135.0	96.8	132.0	132.0	135.0
60"		93.6	118.6	135.0	100.3	125.4	125.4	135.0
63"		89.1	112.9	130.7	95.5	119.4	119.4	135.0
66"		90.8	107.8	130.5	91.2	121.6	121.6	135.0
69"		86.8	103.1	124.8	94.5	116.3	116.3	133.3
72"	83.2	104.0	119.6	90.6	111.5	111.5	127.7	
36"	126"	128.8	135.0	135.0	132.7	135.0	135.0	135.0
39"		118.9	135.0	135.0	122.5	135.0	135.0	135.0
42"		118.9	135.0	135.0	113.7	135.0	135.0	135.0
45"		110.9	134.7	135.0	106.2	135.0	135.0	135.0
48"		104.0	133.7	135.0	109.5	135.0	135.0	135.0
51"		97.9	125.8	135.0	103.0	131.1	131.1	135.0
54"		99.0	118.9	135.0	97.3	132.7	132.7	135.0
57"		93.8	112.6	135.0	92.2	125.7	125.7	135.0
60"		89.1	112.9	130.7	95.5	119.4	119.4	135.0
63"		84.9	107.5	124.5	91.0	113.7	113.7	130.3
66"		86.4	102.6	124.3	86.9	115.8	115.8	132.7
69"		82.7	98.2	118.9	90.0	110.8	110.8	126.9
72"	79.2	99.0	113.9	86.3	106.2	106.2	121.7	

ANCHOR LOAD CAPACITY - PSF EXT.(+) & INT.(-)								
NOMINAL DIMS.		ANCHORS TYPE 'A'			ANCHORS TYPE 'B'		ANCHORS TYPE 'C'	
WIDTH (W)	FRAME HEIGHT	A3	A4	A5	B2	B3	C2	C3
36"	132"	122.9	135.0	135.0	126.7	135.0	135.0	135.0
39"		113.5	135.0	135.0	116.9	135.0	135.0	135.0
42"		113.5	135.0	135.0	108.6	135.0	135.0	135.0
45"		105.9	128.6	135.0	101.3	135.0	135.0	135.0
48"		99.3	127.6	135.0	104.5	133.0	133.0	135.0
51"		93.4	120.1	135.0	98.4	125.2	125.2	135.0
54"		94.5	113.5	135.0	92.9	126.7	126.7	135.0
57"		89.6	107.5	131.4	88.0	120.0	120.0	135.0
60"		85.1	107.8	124.8	91.2	114.0	114.0	130.6
63"		81.0	102.6	118.9	86.9	108.6	108.6	124.4
66"		82.5	98.0	118.6	82.9	110.5	110.5	126.7
69"		78.9	93.7	113.5	85.9	105.7	105.7	121.2
72"	75.6	94.5	108.7	82.3	101.3	101.3	116.1	
36"	138"	117.6	135.0	135.0	121.2	135.0	135.0	135.0
39"		108.5	135.0	135.0	111.8	135.0	135.0	135.0
42"		108.5	131.8	135.0	103.9	135.0	135.0	135.0
45"		101.3	123.0	135.0	96.9	135.0	135.0	135.0
48"		95.0	122.1	135.0	100.0	127.2	127.2	135.0
51"		89.4	114.9	134.1	94.1	119.7	119.7	135.0
54"		90.4	108.5	132.6	88.9	121.2	121.2	135.0
57"		85.7	102.8	125.7	84.2	114.8	114.8	131.5
60"		81.4	103.1	119.4	87.2	109.0	109.0	125.0
63"		77.5	98.2	113.7	83.1	103.9	103.9	119.0
66"		78.9	93.7	113.5	79.3	105.7	105.7	121.2
69"		75.5	89.6	108.5	82.2	101.1	101.1	115.9
72"	72.3	90.4	104.0	78.8	96.9	96.9	111.1	
36"	144"	112.7	135.0	135.0	116.1	135.0	135.0	135.0
39"		104.0	135.0	135.0	107.2	135.0	135.0	135.0
42"		104.0	126.3	135.0	99.5	135.0	135.0	135.0
45"		97.1	117.9	135.0	92.9	130.0	130.0	135.0
48"		91.0	117.0	135.0	95.8	121.9	121.9	135.0
51"		85.6	110.1	128.5	90.2	114.7	114.7	131.5
54"		86.7	104.0	127.1	85.1	116.1	116.1	133.1
57"		82.1	98.5	120.4	80.7	110.0	110.0	126.1
60"		78.0	98.8	114.4	83.6	104.5	104.5	119.8
63"		74.3	94.1	109.0	79.6	99.5	99.5	114.0
66"		75.6	89.8	108.7	76.0	101.3	101.3	116.1
69"		72.3	85.9	104.0	78.8	96.9	96.9	111.1
72"	69.3	86.7	99.7	75.5	92.9	92.9	106.4	
36"	150"	108.2	135.0	135.0	111.5	135.0	135.0	135.0
39"		99.8	130.6	135.0	102.9	133.8	133.8	135.0
42"		99.8	121.2	135.0	95.5	133.8	133.8	135.0
45"		93.2	113.2	135.0	89.2	124.8	124.8	135.0
48"		87.4	112.3	131.0	92.0	117.0	117.0	134.1
51"		82.2	105.7	123.3	86.6	110.2	110.2	126.2
54"		83.2	99.8	122.0	81.7	111.5	111.5	127.7
57"		78.8	94.6	115.6	77.4	105.6	105.6	121.0
60"		74.9	94.8	109.8	80.3	100.3	100.3	115.0
63"		71.3	90.3	104.6	76.4	95.5	95.5	109.5
66"		72.6	86.2	104.4	73.0	97.3	97.3	111.5
69"		69.5	82.5	99.8	75.6	93.1	93.1	106.6
72"	66.6	83.2	95.7	72.5	89.2	89.2	102.2	

ANCHOR LOAD CAPACITY - PSF EXT.(+) & INT.(-)								
NOMINAL DIMS.		ANCHORS TYPE 'A'			ANCHORS TYPE 'B'		ANCHORS TYPE 'C'	
WIDTH (W)	FRAME HEIGHT	A3	A4	A5	B2	B3	C2	C3
36"	156"	104.0	135.0	135.0	107.2	135.0	135.0	135.0
39"		96.0	125.5	135.0	98.9	128.6	128.6	135.0
42"		96.0	116.6	135.0	91.9	128.6	128.6	135.0
45"		89.6	108.8	134.4	85.7	120.0	120.0	135.0
48"		84.0	108.0	126.0	88.4	112.5	112.5	129.0
51"		79.1	101.6	118.6	83.2	105.9	105.9	121.4
54"		80.0	96.0	117.3	78.6	107.2	107.2	122.8
57"		75.8	90.9	111.2	74.5	101.5	101.5	116.4
60"		72.0	91.2	105.6	77.2	96.5	96.5	110.5
63"		68.6	86.9	100.6	73.5	91.9	91.9	105.3
66"		69.8	82.9	100.4	70.2	93.5	93.5	107.2
69"		66.8	79.3	96.0	72.7	89.5	89.5	102.5
36"	162"	100.1	131.0	135.0	103.2	134.2	134.2	135.0
39"		92.4	120.9	135.0	95.3	123.9	123.9	135.0
42"		92.4	112.3	135.0	88.5	123.9	123.9	135.0
45"		86.3	104.8	129.4	82.6	115.6	115.6	132.5
48"		80.9	104.0	121.3	85.1	108.4	108.4	124.2
51"		76.1	97.9	114.2	80.1	102.0	102.0	116.9
54"		77.0	92.4	113.0	75.7	103.2	103.2	118.3
57"		73.0	87.6	107.0	71.7	97.8	97.8	112.0
60"		69.3	87.8	101.7	74.3	92.9	92.9	106.4
63"		66.0	83.6	96.8	70.8	88.5	88.5	101.4
66"		67.2	79.8	96.6	67.6	90.1	90.1	103.2
36"		168"	96.6	126.3	135.0	99.5	129.4	129.4
39"	89.1		116.6	135.0	91.9	119.4	119.4	135.0
42"	89.1		108.2	133.7	85.3	119.4	119.4	135.0
45"	83.2		101.0	124.8	79.6	111.5	111.5	127.7
48"	78.0		100.3	117.0	82.1	104.5	104.5	119.8
51"	73.4		94.4	110.1	77.3	98.4	98.4	112.7
54"	74.3		89.1	109.0	73.0	99.5	99.5	114.0
57"	70.4		84.5	103.2	69.1	94.3	94.3	108.0
60"	66.9		84.7	98.1	71.7	89.6	89.6	102.6
63"	63.7		80.7	93.4	68.2	85.3	85.3	97.8

Engr: JAVAD AHMAD  
CIVIL  
FLA. PE # 70592  
C.A.N. 3538

MAR 18 2010

PRODUCT REVISED  
as complying with the Florida  
Building Code  
Acceptance No. 10-0412-04  
Expiration Date June 26, 2013

Manuel Perry  
District Product Control  
District

**afC**  
**AL-FAROOQ CORPORATION**  
ENGINEERS & PRODUCT DEVELOPMENT  
1235 S.W. 87 AVE  
MIAMI, FLORIDA 33174  
TEL. (305) 264-8100 FAX. (305) 262-6978  
STORE/W07-51CTC

PRO-TECH 7 ALUM CURTAIN WALL SYSTEM (S.M.I.)  
**CRAWFORD TRACEY CORPORATION**  
3301 SW 13TH DRIVE  
DEERFIELD BEACH, FL. 33442-8101  
TEL. (954) 698-6888 FAX. (954) 698-6889

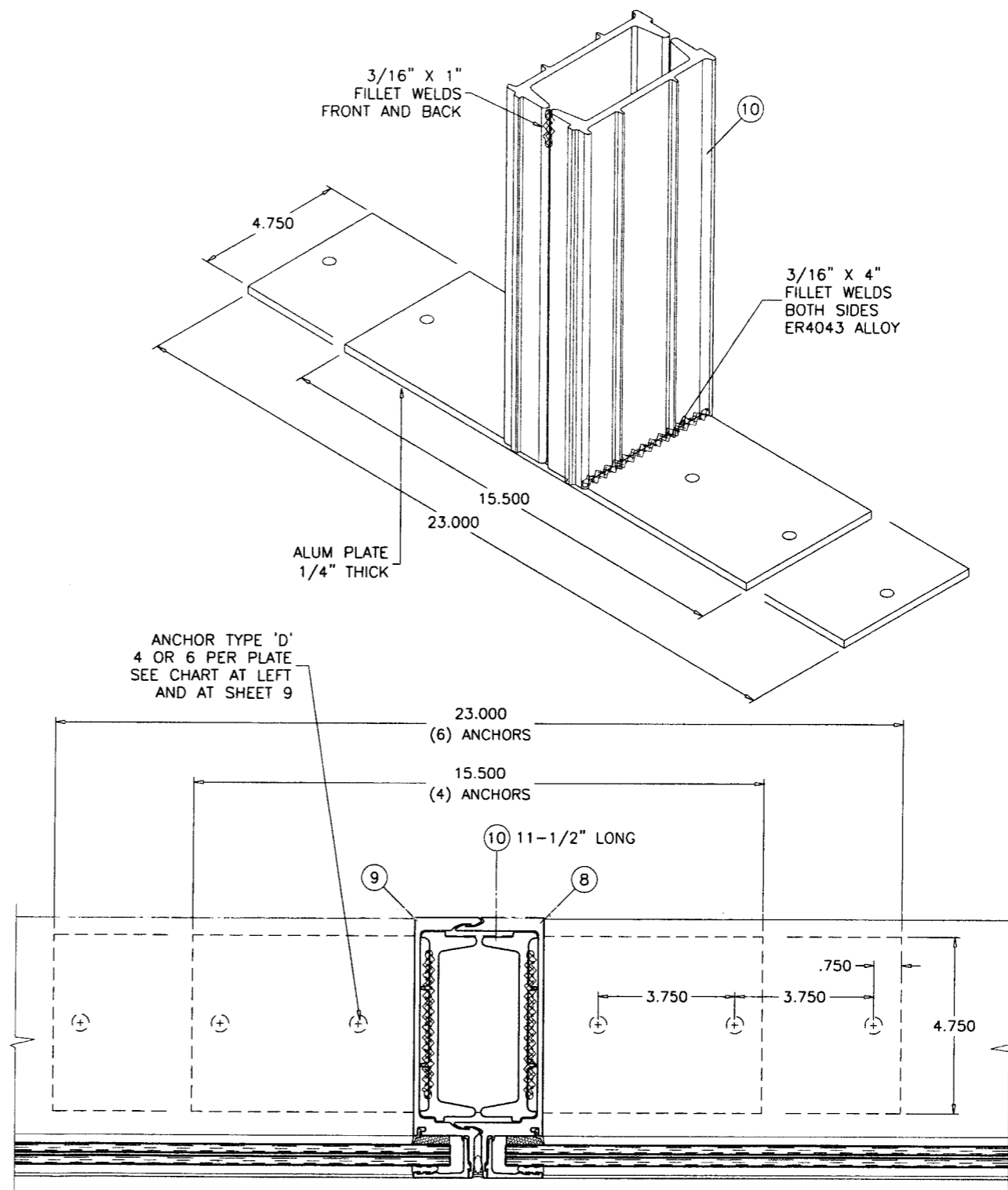
revisions:

no	date	description
A	10.02.10	NO CHANGE THIS SHEET

date: 05-29-07

ANCHOR LOAD CAPACITY - PSF EXT.(+) & INT.(-)					
NOMINAL DIMS.		4 ANCHORS PER PLATE TYPE 'D'		6 ANCHORS PER PLATE TYPE 'D'	
WIDTH (W)	FRAME HEIGHT	3-1/4" EDGE DIST.	4" EDGE DIST.	3-1/4" EDGE DIST.	4" EDGE DIST.
36"	72"	185.0	185.0	185.0	185.0
39"		185.0	185.0	185.0	185.0
42"		185.0	185.0	185.0	185.0
45"		185.0	185.0	185.0	185.0
48"		185.0	185.0	185.0	185.0
51"		185.0	185.0	185.0	185.0
54"		185.0	185.0	185.0	185.0
57"		181.6	185.0	185.0	185.0
60"	78"	172.5	185.0	185.0	185.0
63"		164.3	185.0	185.0	185.0
36"		185.0	185.0	185.0	185.0
39"		185.0	185.0	185.0	185.0
42"		185.0	185.0	185.0	185.0
45"		185.0	185.0	185.0	185.0
48"		185.0	185.0	185.0	185.0
51"		185.0	185.0	185.0	185.0
54"	177.0	185.0	185.0	185.0	
57"	167.6	185.0	185.0	185.0	
36"	84"	185.0	185.0	185.0	185.0
39"		185.0	185.0	185.0	185.0
42"		185.0	185.0	185.0	185.0
45"		185.0	185.0	185.0	185.0
48"		184.9	185.0	185.0	185.0
51"	174.0	185.0	185.0	185.0	
54"	164.3	185.0	185.0	185.0	
36"	90"	185.0	185.0	185.0	185.0
39"		185.0	185.0	185.0	185.0
42"		185.0	185.0	185.0	185.0
45"		184.0	185.0	185.0	185.0
48"		172.5	185.0	185.0	185.0
51"	162.4	185.0	185.0	185.0	
36"	96"	185.0	185.0	185.0	185.0
39"		185.0	185.0	185.0	185.0
42"		184.9	185.0	185.0	185.0
45"		172.5	185.0	185.0	185.0
48"		161.8	185.0	185.0	185.0
36"	102"	185.0	185.0	185.0	185.0
39"		185.0	185.0	185.0	185.0
42"		174.0	185.0	185.0	185.0
45"		162.4	185.0	185.0	185.0
36"	106"	185.0	185.0	185.0	185.0
39"		180.3	185.0	185.0	185.0
42"		167.4	185.0	185.0	185.0
44"		159.8	185.0	185.0	185.0

SEE SHEET 9 FOR LARGER HEIGHTS



**TYPICAL ANCHORS:**

TYPE 'D' - 3/8" DIA. POWERS WEDGE-BOLT ANCHOR  
 DIRECTLY INTO CONCRETE  
 1-1/2" MIN. EMBED INTO CONC. (3000 PSI MIN.)  
 EDGE DIST. (SEE CHARTS)

Engr: JAVAD AHMAD  
 CIVIL  
 FLA. PE # 70592  
 C.A.N. 3538

*JA*  
 MAR 18 2010

PRODUCT REVISIONS  
 as existing with the Florida  
 Building Code  
 Approved By: 10-0412.04  
 Date: June 26, 2013

*Manuel Perez*  
 Division

**afc**  
**AL-FAROOQ CORPORATION**  
 ENGINEERS & PRODUCT DEVELOPMENT  
 1235 S.W. 87 AVE  
 MIAMI, FLORIDA 33174  
 TEL. (305) 264-8100 FAX. (305) 262-6978  
 STORE \W07-51CTC

PRO-TECH 7 ALUM CURTAIN WALL SYSTEM (S.M.I.)  
**CRAWFORD TRACEY CORPORATION**  
 3301 SW 13TH DRIVE  
 DEERFIELD BEACH, FL. 33442-8101  
 TEL. (954) 698-6888 FAX. (954) 698-6889

no	date	description
A	10.03.02.10	UPDATED FOR 2007 FBC

date: 05-29-07  
 scale: 1/4" = 1"  
 dr. by: HAMID  
 chk. by:

drawing no.  
**W07-51**  
 sheet 8 of 15

ANCHOR LOAD CAPACITY - PSF EXT.(+) & INT.(-)					
NOMINAL DIMS.		4 ANCHORS PER PLATE TYPE 'D'		6 ANCHORS PER PLATE TYPE 'D'	
WIDTH (W)	FRAME HEIGHT	3-1/4" EDGE DIST.	4" EDGE DIST.	3-1/4" EDGE DIST.	4" EDGE DIST.
36"	102"	135.0	135.0	135.0	135.0
39"		135.0	135.0	135.0	135.0
42"		135.0	135.0	135.0	135.0
45"		135.0	135.0	135.0	135.0
48"		135.0	135.0	135.0	135.0
51"		135.0	135.0	135.0	135.0
54"		135.0	135.0	135.0	135.0
57"		128.2	135.0	135.0	135.0
60"		121.8	135.0	135.0	135.0
63"		116.0	135.0	135.0	135.0
66"		110.7	135.0	135.0	135.0
69"		105.9	135.0	135.0	135.0
72"	101.5	129.7	135.0	135.0	
36"	108"	135.0	135.0	135.0	135.0
39"		135.0	135.0	135.0	135.0
42"		135.0	135.0	135.0	135.0
45"		135.0	135.0	135.0	135.0
48"		135.0	135.0	135.0	135.0
51"		135.0	135.0	135.0	135.0
54"		127.8	135.0	135.0	135.0
57"		121.1	135.0	135.0	135.0
60"		115.0	135.0	135.0	135.0
63"		109.5	135.0	135.0	135.0
66"		104.6	133.7	135.0	135.0
69"		100.0	127.8	135.0	135.0
72"	95.9	122.5	135.0	135.0	
36"	114"	135.0	135.0	135.0	135.0
39"		135.0	135.0	135.0	135.0
42"		135.0	135.0	135.0	135.0
45"		135.0	135.0	135.0	135.0
48"		135.0	135.0	135.0	135.0
51"		128.2	135.0	135.0	135.0
54"		121.1	135.0	135.0	135.0
57"		114.7	135.0	135.0	135.0
60"		109.0	135.0	135.0	135.0
63"		103.8	132.7	135.0	135.0
66"		99.1	126.6	135.0	135.0
69"		94.8	121.1	135.0	135.0
72"	90.8	116.1	135.0	135.0	
36"	120"	135.0	135.0	135.0	135.0
39"		135.0	135.0	135.0	135.0
42"		135.0	135.0	135.0	135.0
45"		135.0	135.0	135.0	135.0
48"		129.4	135.0	135.0	135.0
51"		121.8	135.0	135.0	135.0
54"		115.0	135.0	135.0	135.0
57"		109.0	135.0	135.0	135.0
60"		103.5	132.3	135.0	135.0
63"		98.6	126.0	135.0	135.0
66"		94.1	120.3	135.0	135.0
69"		90.0	115.1	135.0	135.0
72"	86.3	110.3	129.4	135.0	

ANCHOR LOAD CAPACITY - PSF EXT.(+) & INT.(-)					
NOMINAL DIMS.		4 ANCHORS PER PLATE TYPE 'D'		6 ANCHORS PER PLATE TYPE 'D'	
WIDTH (W)	FRAME HEIGHT	3-1/4" EDGE DIST.	4" EDGE DIST.	3-1/4" EDGE DIST.	4" EDGE DIST.
36"	126"	135.0	135.0	135.0	135.0
39"		135.0	135.0	135.0	135.0
42"		135.0	135.0	135.0	135.0
45"		131.5	135.0	135.0	135.0
48"		123.2	135.0	135.0	135.0
51"		116.0	135.0	135.0	135.0
54"		109.5	135.0	135.0	135.0
57"		103.8	132.7	135.0	135.0
60"		98.6	126.0	135.0	135.0
63"		93.9	120.0	135.0	135.0
66"		89.6	114.6	134.4	135.0
69"		85.7	109.6	128.6	135.0
72"	82.2	105.0	123.2	135.0	
36"	132"	135.0	135.0	135.0	135.0
39"		135.0	135.0	135.0	135.0
42"		134.4	135.0	135.0	135.0
45"		125.5	135.0	135.0	135.0
48"		117.6	135.0	135.0	135.0
51"		110.7	135.0	135.0	135.0
54"		104.6	133.7	135.0	135.0
57"		99.1	126.6	135.0	135.0
60"		94.1	120.3	135.0	135.0
63"		89.6	114.6	134.4	135.0
66"		85.6	109.4	128.3	135.0
69"		81.8	104.6	122.8	135.0
72"	78.4	100.2	117.6	135.0	
36"	138"	135.0	135.0	135.0	135.0
39"		135.0	135.0	135.0	135.0
42"		128.6	135.0	135.0	135.0
45"		120.0	135.0	135.0	135.0
48"		112.5	135.0	135.0	135.0
51"		105.9	135.0	135.0	135.0
54"		100.0	127.8	135.0	135.0
57"		94.8	121.1	135.0	135.0
60"		90.0	115.1	135.0	135.0
63"		85.7	109.6	128.6	135.0
66"		81.8	104.6	122.8	135.0
69"		78.3	100.1	117.4	135.0
72"	75.0	95.9	112.5	135.0	
36"	144"	135.0	135.0	135.0	135.0
39"		132.7	135.0	135.0	135.0
42"		123.2	135.0	135.0	135.0
45"		115.0	135.0	135.0	135.0
48"		107.8	135.0	135.0	135.0
51"		101.5	129.7	135.0	135.0
54"		95.9	122.5	135.0	135.0
57"		90.0	116.1	135.0	135.0
60"		86.3	110.3	129.4	135.0
63"		82.2	105.0	123.2	135.0
66"		78.4	100.2	117.6	135.0
69"		75.0	95.9	112.5	135.0

ANCHOR LOAD CAPACITY - PSF EXT.(+) & INT.(-)						
NOMINAL DIMS.		4 ANCHORS PER PLATE TYPE 'D'		6 ANCHORS PER PLATE TYPE 'D'		
WIDTH (W)	FRAME HEIGHT	3-1/4" EDGE DIST.	4" EDGE DIST.	3-1/4" EDGE DIST.	4" EDGE DIST.	
36"	150"	135.0	135.0	135.0	135.0	
39"		127.4	135.0	135.0	135.0	
42"		118.3	135.0	135.0	135.0	
45"		110.4	135.0	135.0	135.0	
48"		103.5	132.3	135.0	135.0	
51"		97.4	124.5	135.0	135.0	
54"		92.0	117.6	135.0	135.0	
57"		87.2	111.4	130.8	135.0	
60"		82.8	105.9	124.2	135.0	
63"		78.9	100.8	118.3	135.0	
66"		75.3	96.2	112.9	135.0	
36"		156"	132.7	135.0	135.0	135.0
39"	122.5		135.0	135.0	135.0	
42"	113.8		135.0	135.0	135.0	
45"	106.2		135.0	135.0	135.0	
48"	99.5		127.2	135.0	135.0	
51"	93.7		119.7	135.0	135.0	
54"	88.5		113.1	132.7	135.0	
57"	83.8		107.1	125.7	135.0	
60"	79.6		101.8	119.4	135.0	
63"	75.8		96.9	113.8	135.0	
36"	162"		127.8	135.0	135.0	135.0
39"			118.0	135.0	135.0	135.0
42"		109.5	135.0	135.0	135.0	
45"		102.2	130.7	135.0	135.0	
48"		95.9	122.5	135.0	135.0	
51"		90.2	115.3	135.0	135.0	
54"		85.2	108.9	127.8	135.0	
57"		80.7	103.2	121.1	135.0	
60"		76.7	98.0	115.0	135.0	
36"		168"	123.2	135.0	135.0	135.0
39"			113.8	135.0	135.0	135.0
42"			105.6	135.0	135.0	135.0
45"	98.6		126.0	135.0	135.0	
48"	92.4		118.1	135.0	135.0	
51"	87.0		111.2	130.5	135.0	
54"	82.2		105.0	123.2	135.0	
57"	77.8		99.5	116.8	135.0	
60"	73.9		94.5	110.9	135.0	

Engr: JAVAD AHMAD  
CIVIL  
FLA. PE # 70592  
C.A.N. 3538

*JA*

MAR 18 2010

PRODUCT REVIEWED  
as complying with the Florida  
Building Code  
Approval No. 10-0412-04  
Expiration Date June 26, 2013

*Manuel Perez*

Professional Seal

**afC**

**AL-FAROOQ CORPORATION**  
ENGINEERS & PRODUCT DEVELOPMENT  
12395 S.W. 87 AVE  
MIAMI, FLORIDA 33174  
TEL. (305) 264-8100 FAX. (305) 262-6978

STORE \W07-51CTC

PRO-TECH 7 ALUM CURTAIN WALL SYSTEM (S.M.I.)

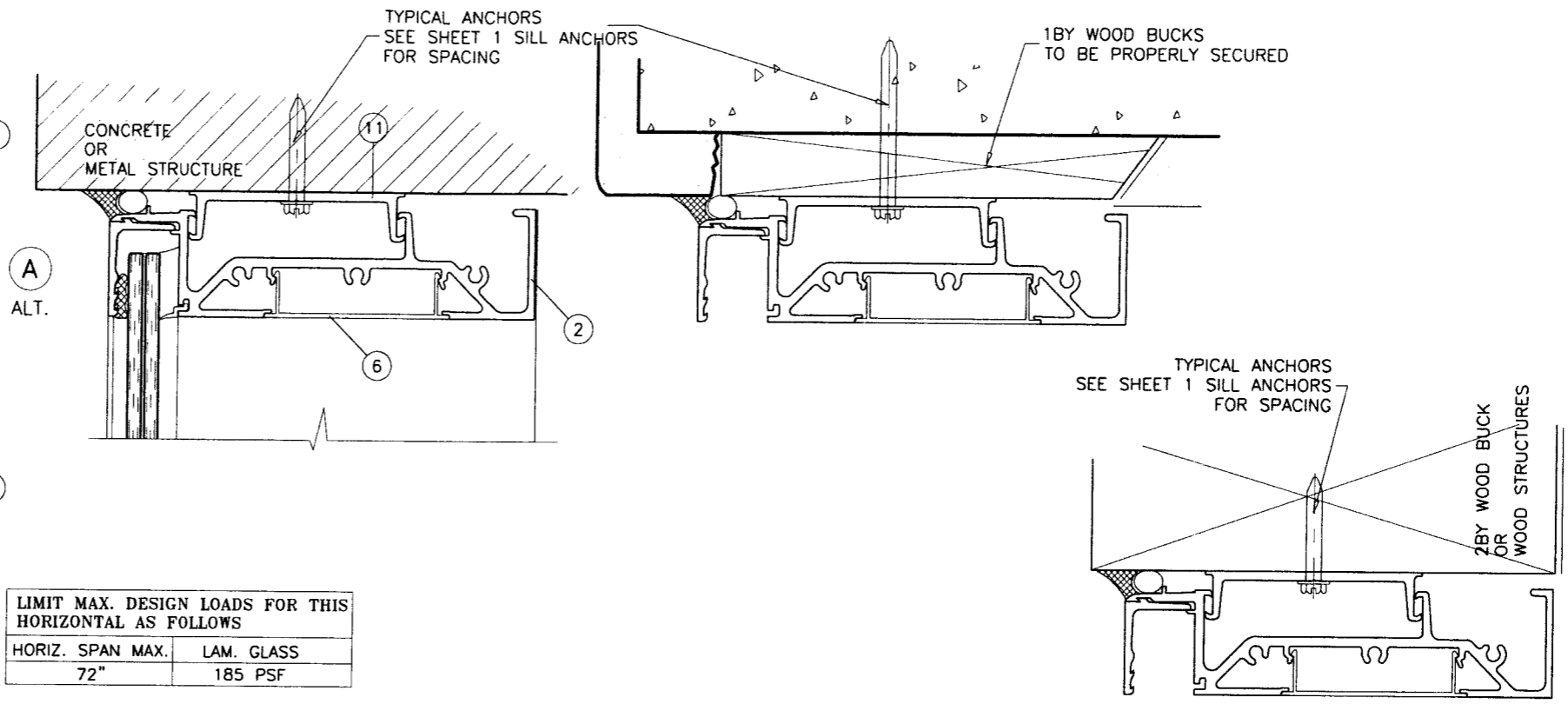
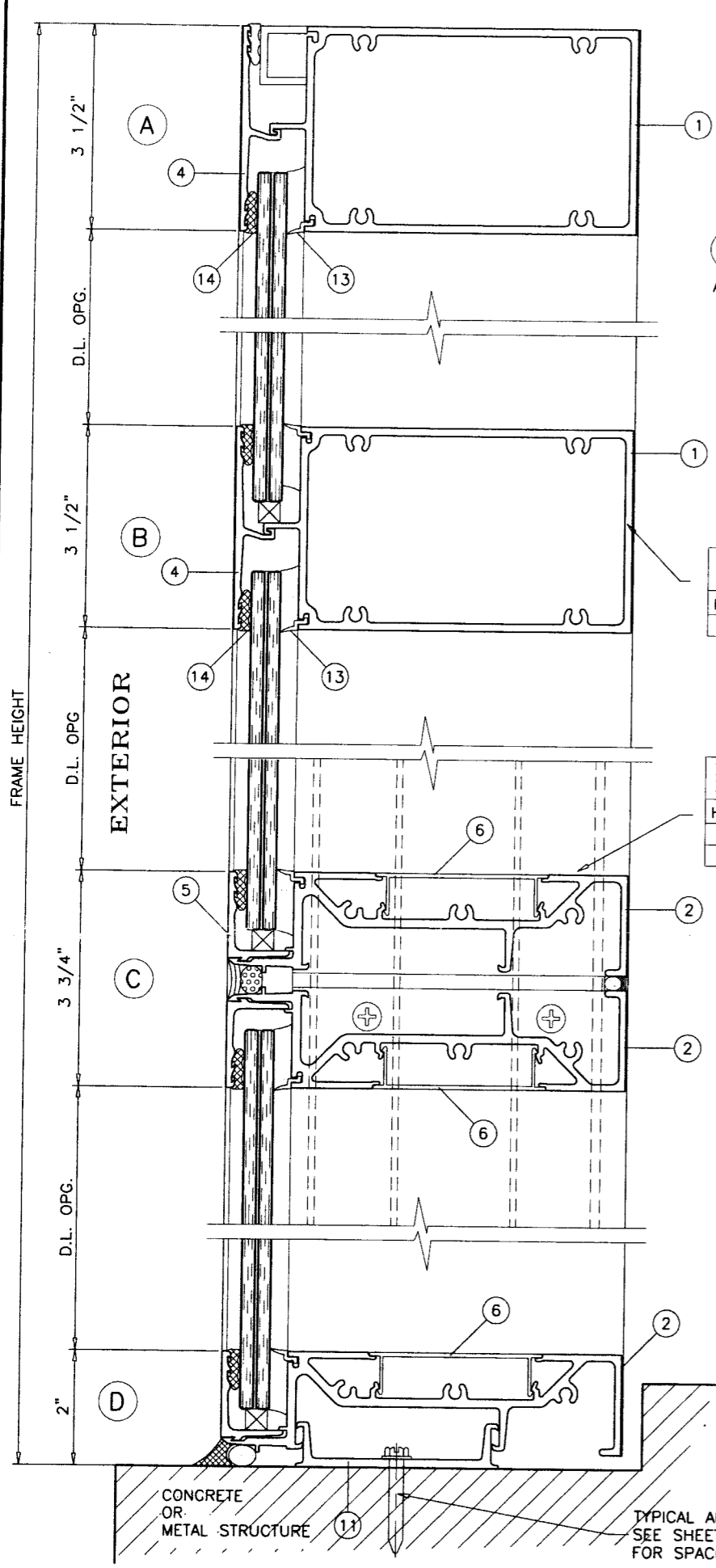
**CRAWFORD TRACEY CORPORATION**  
3301 SW 13TH DRIVE  
DEERFIELD BEACH, FL. 33442-8101  
TEL. (954) 698-6888 FAX. (954) 698-6889

revisions:	no	date	description
	A	03.02.10	UPDATED FOR 2007 FEC

date: 05-29-07  
scale: -  
dr. by: HAMID  
chk. by:

drawing no.  
**W07-51**

sheet 9 of 15



LIMIT MAX. DESIGN LOADS FOR THIS HORIZONTAL AS FOLLOWS

HORIZ. SPAN MAX.	LAM. GLASS
72"	185 PSF

LIMIT MAX. DESIGN LOADS FOR THIS HORIZONTAL AS FOLLOWS

HORIZ. SPAN MAX.	LAM. GLASS
66"	120 PSF
72"	100 PSF

**TYPICAL ANCHORS:** SEE ELEV. FOR SPACING AT HEAD, SILL AND JAMBS

- TYPE 'A' - 5/16" DIA. ULTRACON BY 'ELCO' (Fu=177 KSI, Fy=155 KSI) INTO 2BY WOOD BUCKS OR WOOD STRUCTURES 1-3/8" MIN. PENETRATION INTO WOOD THRU 1BY BUCKS INTO CONC. OR MASONRY 1-1/4" MIN. EMBED INTO CONC. OR MASONRY
- TYPE 'B' - 1/4" DIA. ULTRACON BY 'ELCO' (Fu=177 KSI, Fy=155 KSI) DIRECTLY INTO CONC. OR MASONRY 1-5/8" MIN. EMBED INTO CONC. OR MASONRY
- TYPE 'C' - #14 SMS OR SELF DRILLING SCREWS (GRADE 2 CRS) INTO METAL STRUCTURES  
STEEL : 12 GA. MIN. (Fy = 36 KSI MIN.)  
ALUMINUM : 1/8" THK. MIN. (6063-T5 MIN.)  
(STEEL IN CONTACT WITH ALUMINUM TO BE PLATED OR PAINTED)

**TYPICAL EDGE DISTANCE**

- INTO CONCRETE AND MASONRY = 2-1/2" MIN.
- INTO WOOD STRUCTURE = 1" MIN.
- INTO METAL STRUCTURE = 3/4" MIN.
- CONCRETE AT HEAD, SILL OR JAMBS f'c = 3000 PSI MIN.
- C-90 HOLLOW/FILLED BLOCK AT JAMBS f'm = 2000 PSI MIN.

TYPE 'D' - SEE SHEET 8

WOOD BUCKS AND METAL STRUCTURES NOT BY CRAWFORD TRACEY MUST SUPPORT LOADS IMPOSED BY GLAZING SYSTEM AND TRANSFER THEM TO THE BUILDING STRUCTURE.

Engr: JAVAD AHMAD  
CIVIL  
FLA. PE # 70592  
C.A.N. 3538  
  
MAR 18 2010

PRODUCT REVISED  
AS complying with the Florida Building Code  
Amendment No. 10-0412.04  
June 26, 2013  
*Muhammad Peraz*

**afC**  
**AL-FAROOQ CORPORATION**  
ENGINEERS & PRODUCT DEVELOPMENT  
1235 S.W. 87 AVE  
MIAMI, FLORIDA 33174  
TEL. (305) 264-8100 FAX. (305) 262-6978  
STORE W07-51CTC

PRC-TECH 7 ALUM CURTAIN WALL SYSTEM (S.M.I.)  
**CRAWFORD TRACEY CORPORATION**  
3301 SW 13TH DRIVE  
DEERFIELD BEACH, FL. 33442-8101  
TEL. (954) 698-6888 FAX. (954) 698-6889

revisions:		no	date	by	description
A	03.02.10				UPDATED FOR 2007 FBC

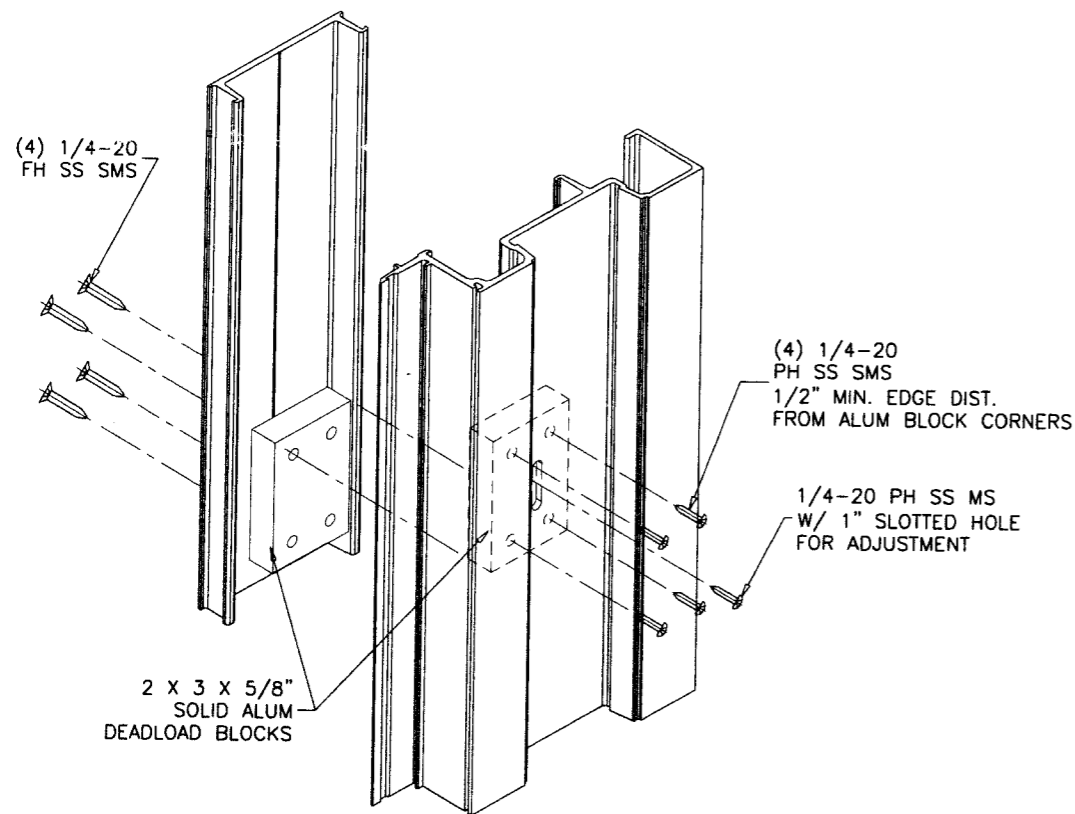
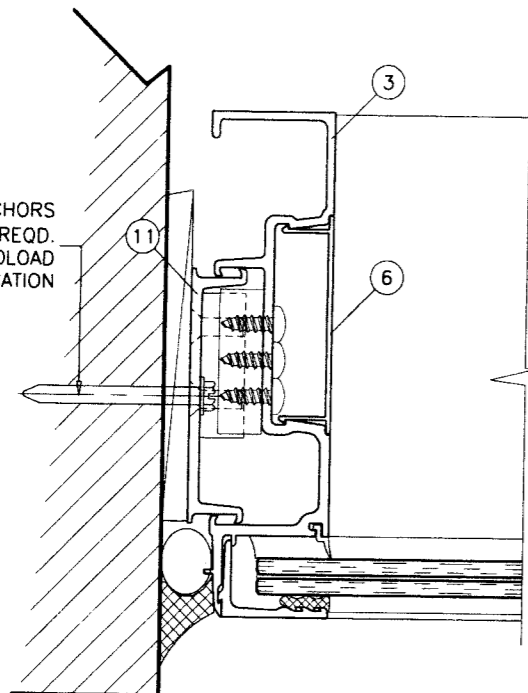
date: 05-29-07	scale: 3/8" = 1"
dr. by: HAMID	chk. by:

drawing no.	W07-51
sheet 10 of 15	



TYPICAL ANCHORS  
(3) ADDL. REQD.  
AT DEADLOAD  
BLOCK LOCATION



DEADLOAD BLOCKS DETAIL  
TYPICAL JAMBS

ITEM NO.	PART NO.	QUANTITY	DESCRIPTION	MATERIAL	MANF./SUPPLIER/REMARKS
1	170H340	AS REQD.	FRAME HORIZONTAL	6063-T6	-
2	170P175	AS REQD.	FRAME SILL	6063-T6	-
3	170J175	AS REQD.	FRAME JAMB	6063-T6	-
4	162F340	AS REQD.	GLAZING ADAPTER	6063-T6	-
5	162F111	AS REQD.	GLAZING ADAPTER	6063-T6	-
6	T30U119	AS REQD.	SNAP IN COVER	6063-T6	-
7	170J175	AS REQD.	FRAME JAMB	-	-
8	170M111	AS REQD.	MALE MULLION	6005-T5	-
9	170M112	AS REQD.	FEMALE MULLION	6005-T5	-
10	170R140	AS REQD.	SPLICE/MULLION REINF./ANCHOR REINF.	6063-T6	-
11	B32B070	AS REQD.	SUB-BUCK	6105-T5	-
12	-	AS REQD.	STEEL REINFORCING	-	-
13	#2	AS REQD.	GLAZING SPACER	POLYPROPYLENE	-
14	#5	AS REQD.	EXTERIOR GASKET	VINYL	-
15	1/4"x1-1/4"	AS REQD.	FRAME ASSEMBLY SCREWS	ST. STEEL	PAN HEAD PHILLIPS
16	-	-	-	-	-

**af c**  
**AL-FAROOQ CORPORATION**  
ENGINEERS & PRODUCT DEVELOPMENT  
1235 S.W. 87 AVE  
MIAMI, FLORIDA 33174  
TEL. (305) 264-8100 FAX. (305) 262-6978

PRO-TECH 7 ALUM CURTAIN WALL SYSTEM (S.M.I.)  
**CRAWFORD TRACEY CORPORATION**  
3301 SW 13TH DRIVE  
DEERFIELD BEACH, FL. 33442-8101  
TEL. (954) 698-6888 FAX. (954) 698-6889

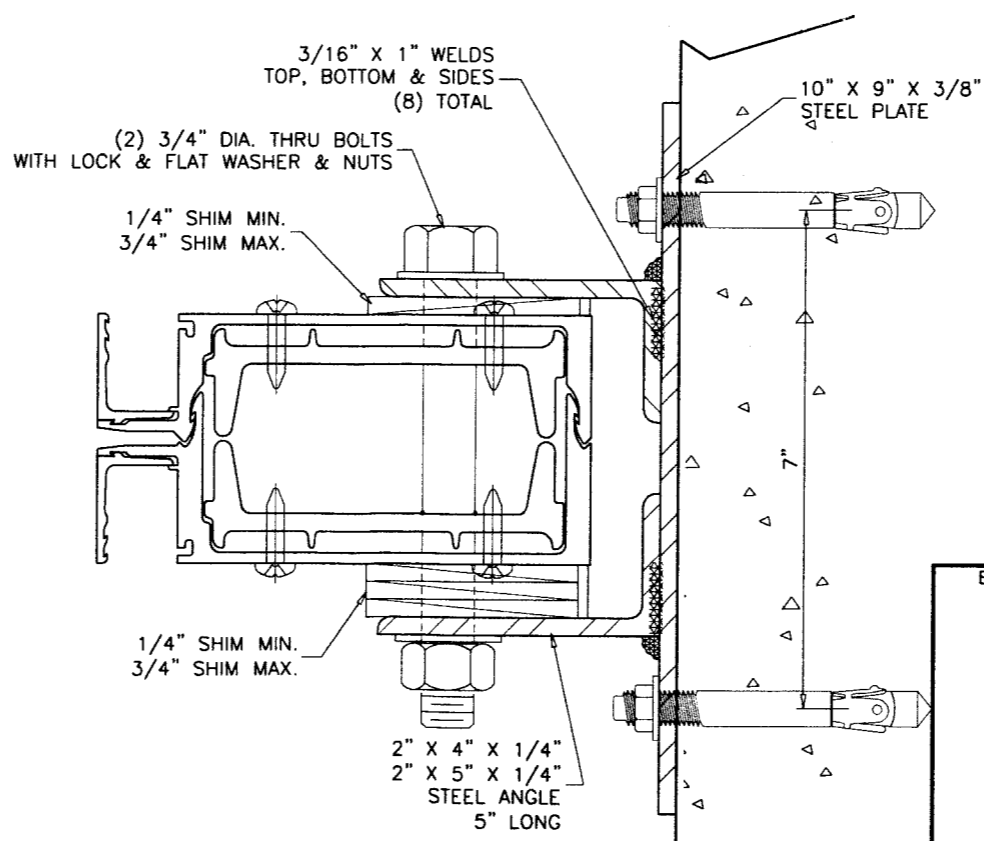
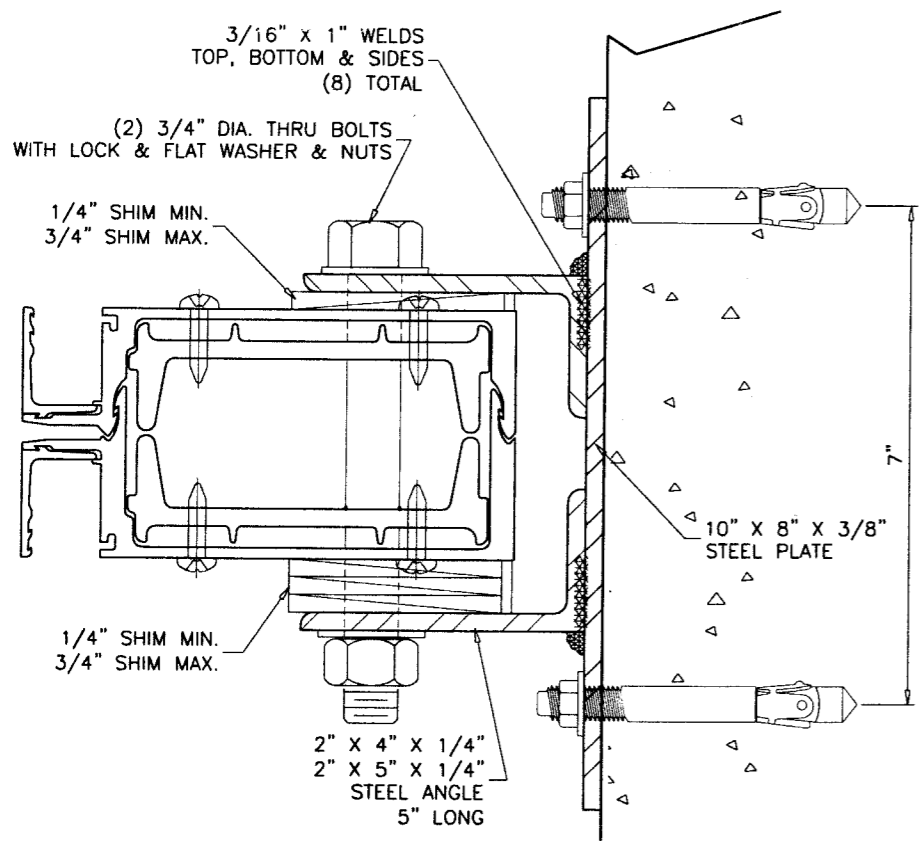
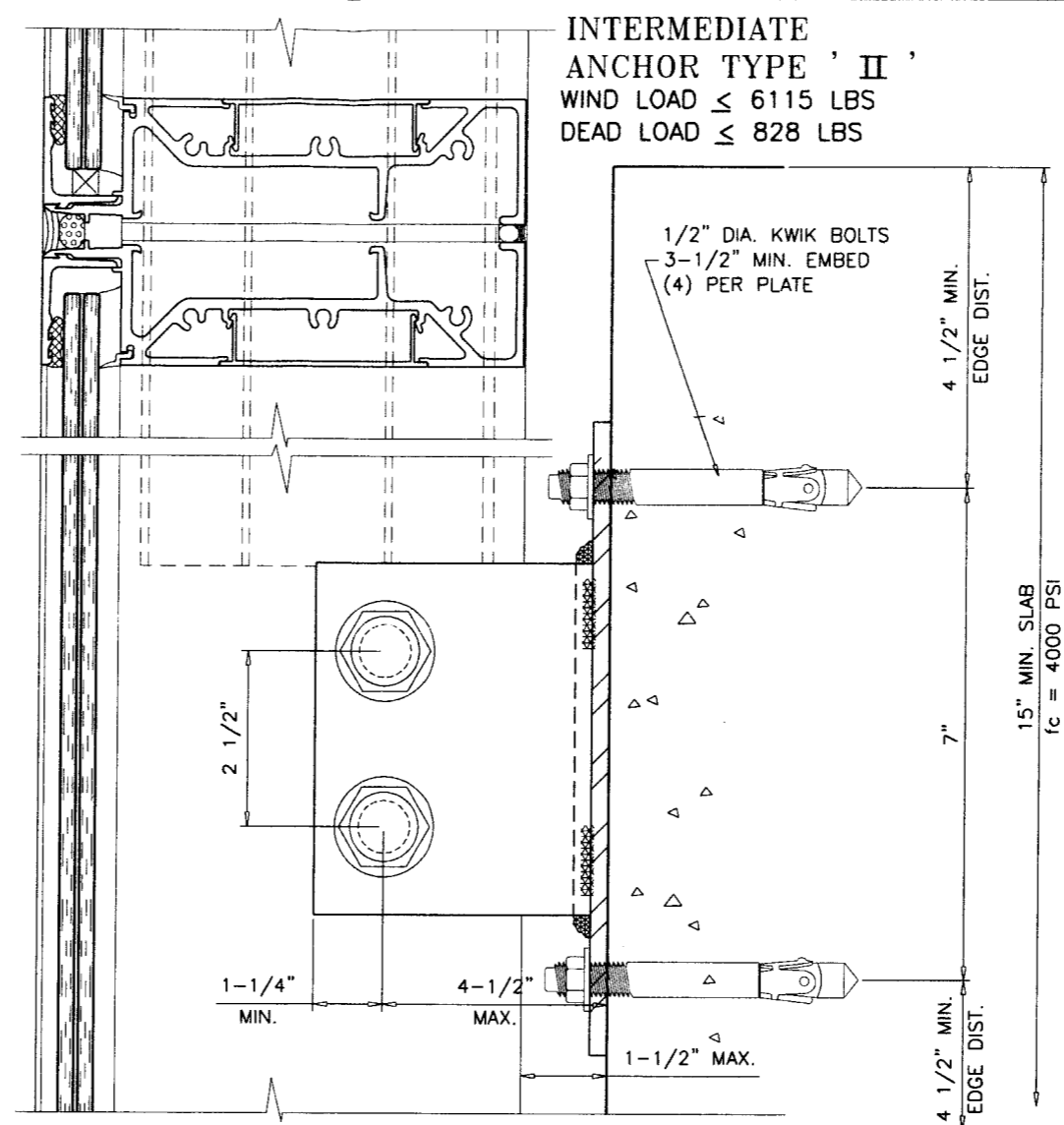
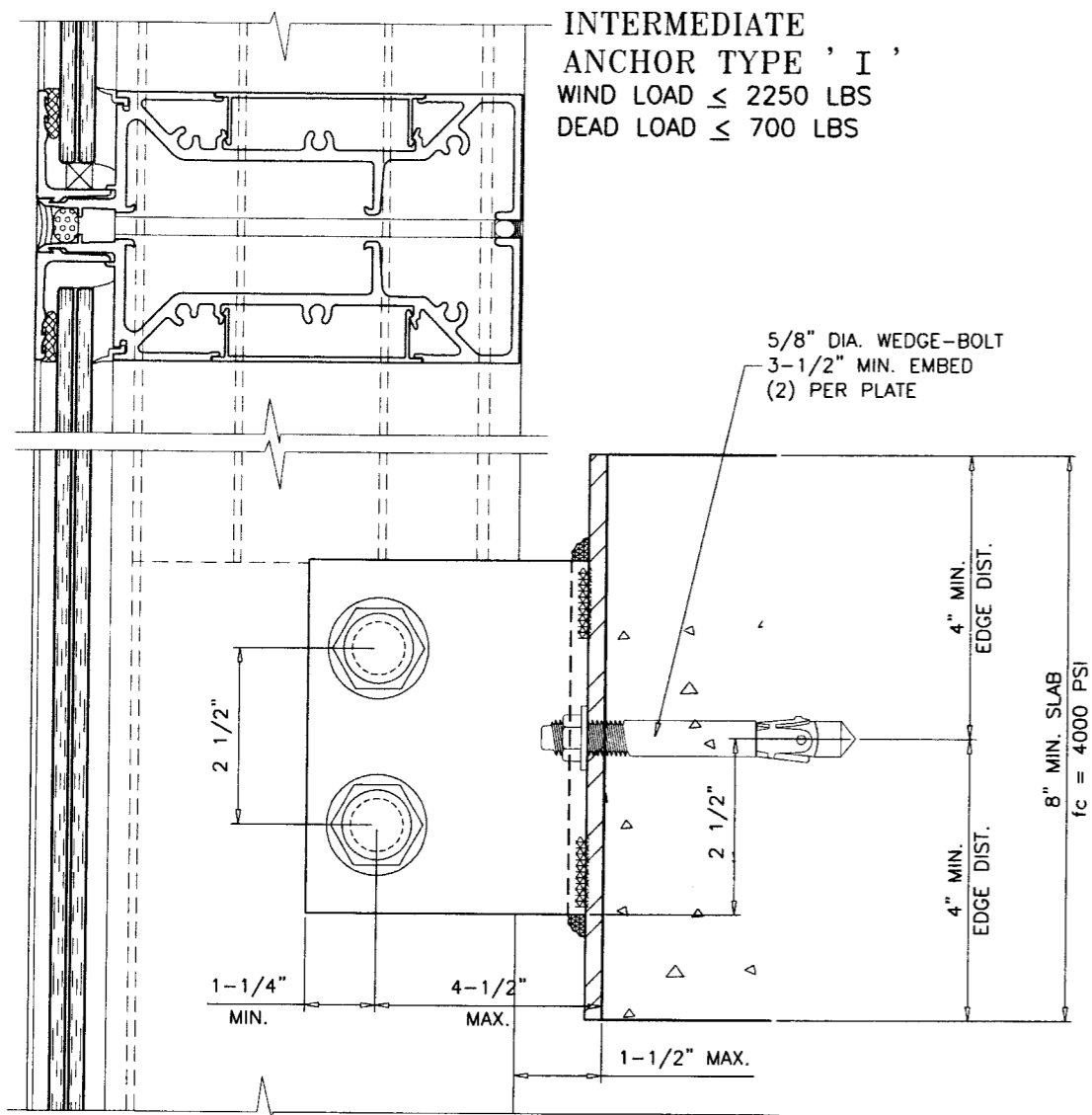
no	date	description
A	03.02.10	NO CHANGE THIS SHEET

Engr: JAVAD AHMAD  
CIVIL  
FLA. PE # 70592  
C.A.N. 3538  
  
MAR 18 2010

PRODUCT REVIEWED  
in compliance with the Florida  
Building Code  
Approval No. 10-0412.04  
June 26, 2013  
By: *Manuel Perez*  
Product Control  
Director

date: 05-29-07  
scale: 3/8" = 1"  
dr. by: HAMID  
chk. by:  
drawing no.  
**W07-51**  
sheet 12 of 15

STORE \W07-51CTC



MIN. CONC.  $f_c' = 4000$  PSI

Engr: JAVAD AHMAD  
 CIVIL  
 FLA. PE # 70592  
 C.A.N. 3538

*JA*  
 MAR 18 2010

PRODUCT REVISION  
 as complying with the Florida  
 Building Code  
 Accepted on 10-04-12-04  
 Regulation No. June 26, 2013

*Manuel Perez*  
 Regional Sales Product Control  
 Division

**af c**

**AL-FAROOQ CORPORATION**  
 ENGINEERS & PRODUCT DEVELOPMENT  
 1235 S.W. 87 AVE  
 MIAMI, FLORIDA 33174  
 TEL. (305) 264-8100 FAX. (305) 262-6978  
 STORE W07-51CTC

PRO-TECH 7 ALUM CURTAIN WALL SYSTEM (S.M.I.)

**CRAWFORD TRACEY CORPORATION**  
 3301 SW 13TH DRIVE  
 DEERFIELD BEACH, FL. 33442-8101  
 TEL. (954) 698-6888 FAX. (954) 698-6889

no	date	by	description
A	03.02.10		UPDATED FOR 2007 FBC

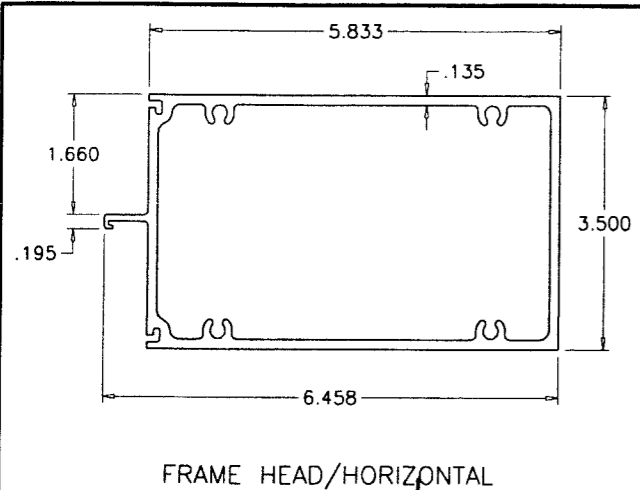
revisions:

date: 05-29-07  
 scale: 3/8" = 1"  
 dr. by: HAMID  
 chk. by:

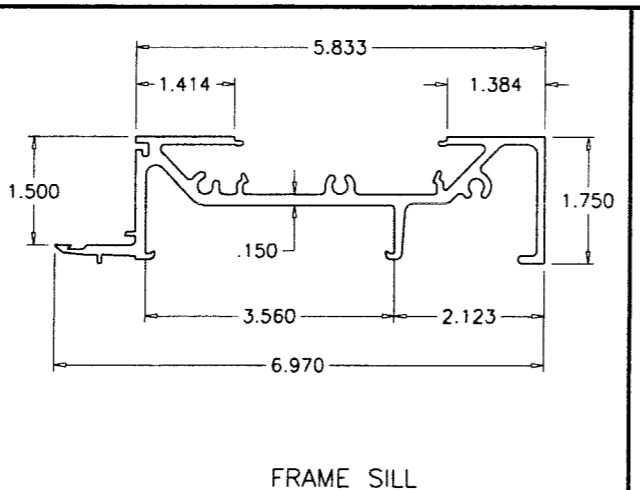
drawing no.  
**W07-51**

sheet 13 of 15

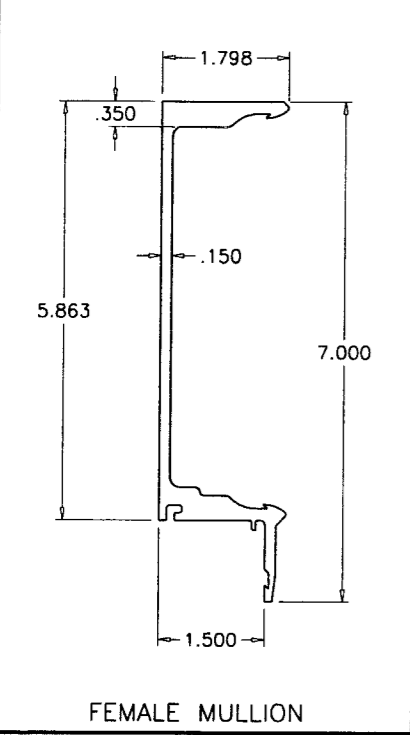




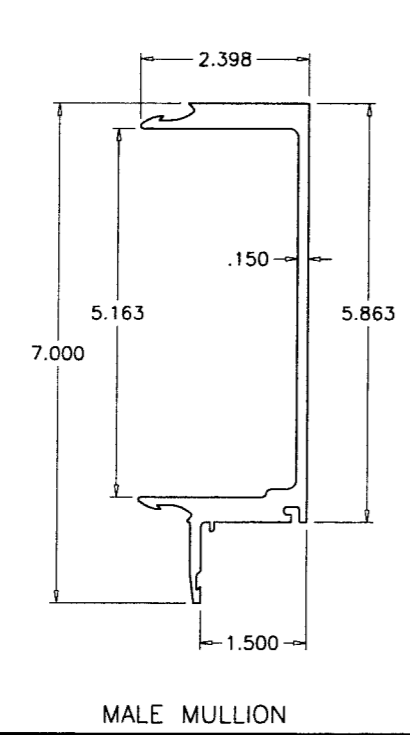
FRAME HEAD/HORIZONTAL



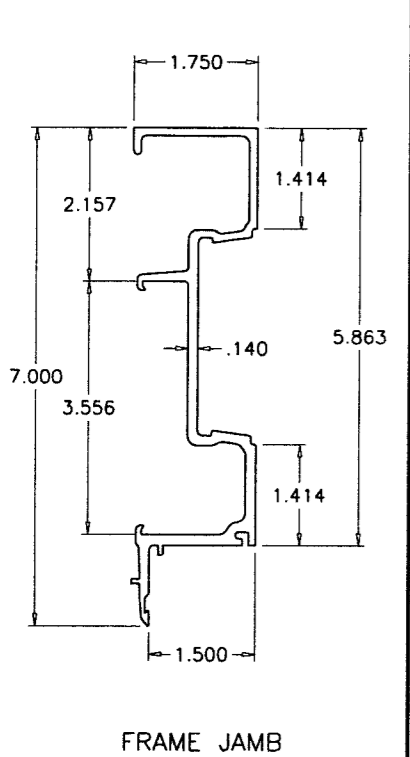
FRAME SILL



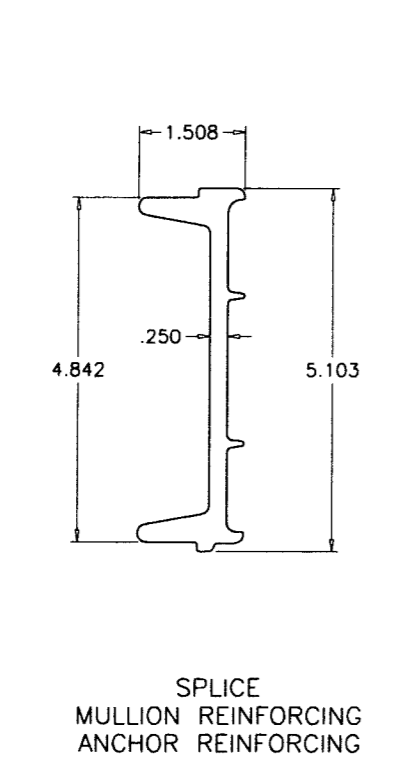
FEMALE MULLION



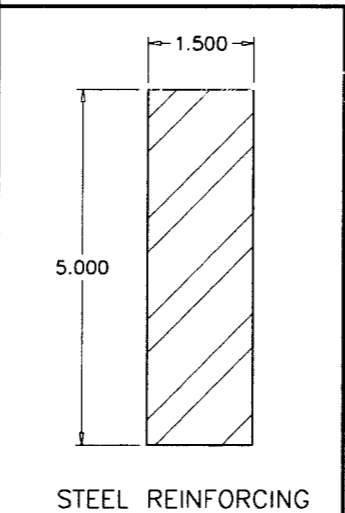
MALE MULLION



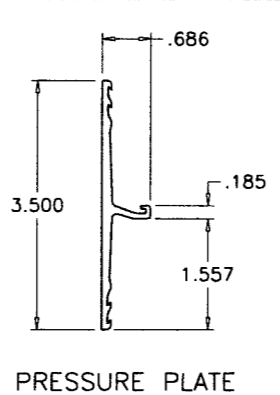
FRAME JAMB



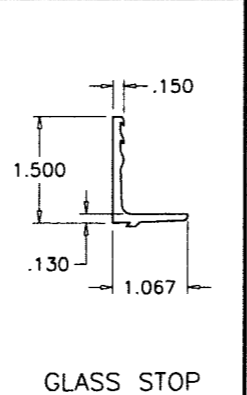
SPLICE MULLION ANCHOR REINFORCING



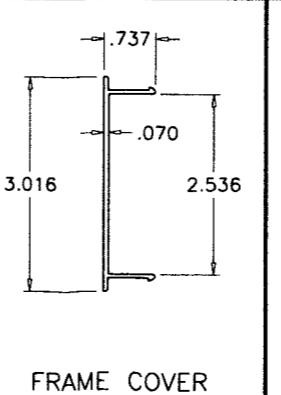
STEEL REINFORCING



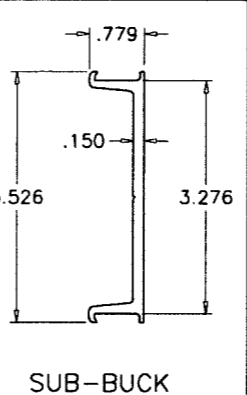
PRESSURE PLATE



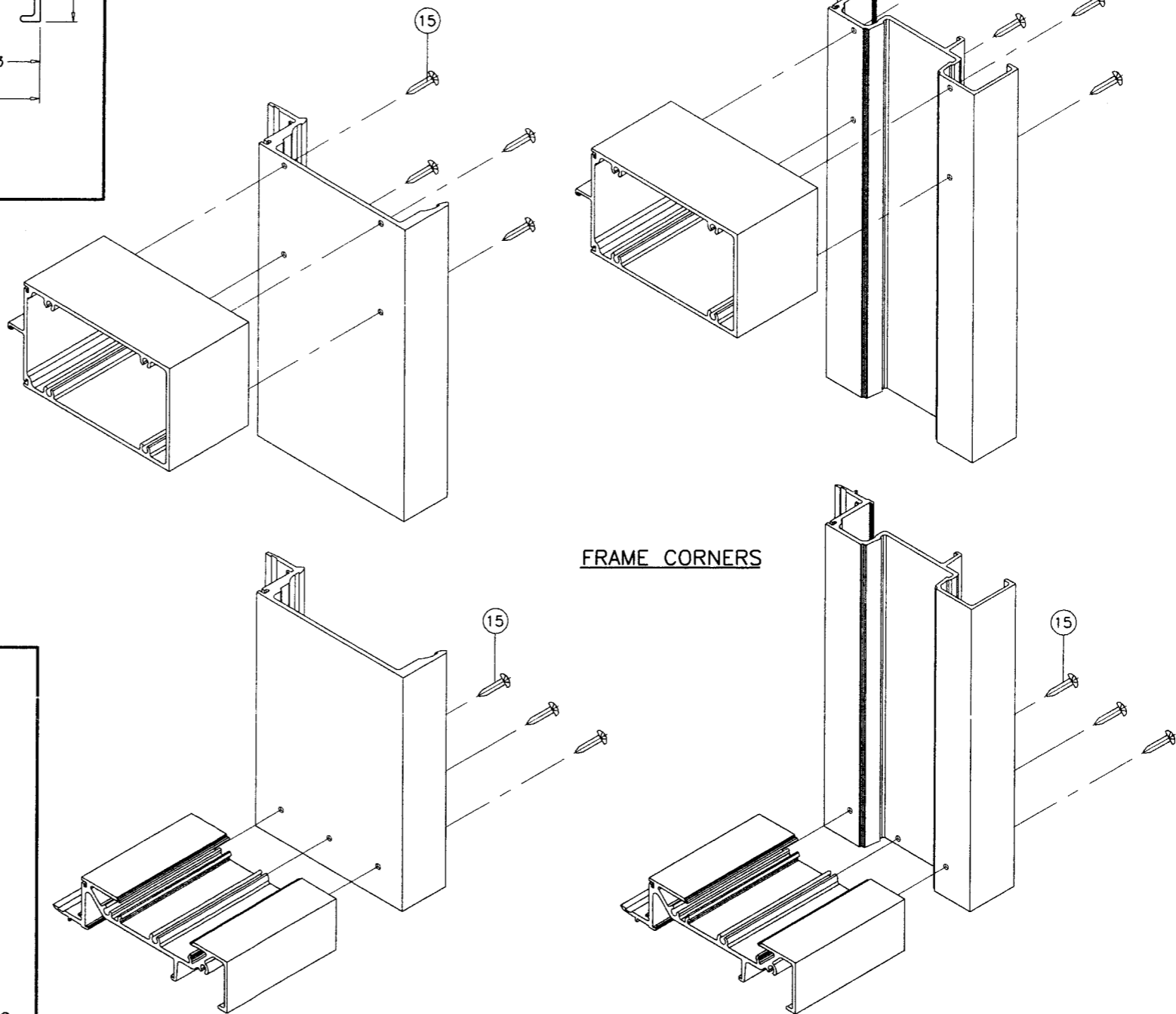
GLASS STOP



FRAME COVER



SUB-BUCK



FRAME CORNERS

Engr: JAVAD AHMAD  
 CIVIL  
 FLA. PE # 70592  
 C.A.N. 3538  
 MAR 18 2010

REVISIONS: 10-DA-12-DA  
 June 26, 2013  
 dr. by: HAMID  
 chk. by:

**af c**  
**AL-FAROOQ CORPORATION**  
 ENGINEERS & PRODUCT DEVELOPMENT  
 1235 S.W. 87 AVE  
 MIAMI, FLORIDA 33174  
 TEL. (305) 264-8100 FAX. (305) 262-6978  
 STORE \W07-51CTC

PRO-TECH 7 ALUM CURTAIN WALL SYSTEM (S.M.I.)  
**CRAWFORD TRACEY CORPORATION**  
 3301 SW 13TH DRIVE  
 DEERFIELD BEACH, FL. 33442-8101  
 TEL. (954) 698-6888 FAX. (954) 698-6889

no	date	description
A	03.02.10	NO CHANGE THIS SHEET

date: 05-29-07  
 scale: 3/8" = 1"  
 dr. by: HAMID  
 chk. by:  
 drawing no. **W07-51**  
 sheet 15 of 15