



BUILDING CODE COMPLIANCE OFFICE (BCCO)
PRODUCT CONTROL DIVISION

MIAMI-DADE COUNTY, FLORIDA
METRO-DADE FLAGLER BUILDING
140 WEST FLAGLER STREET, SUITE 1603
MIAMI, FLORIDA 33130-1563
(305) 375-2901 FAX (305) 372-6339

NOTICE OF ACCEPTANCE (NOA)

www.miamidade.gov/buildingcode

Crawford Tracey Corporation
3301 SW 13th Drive
Deerfield Beach, FL 33442

SCOPE:

This NOA is being issued under the applicable rules and regulations governing the use of construction materials. The documentation submitted has been reviewed by Miami-Dade County Product Control Division and accepted by the Board of Rules and Appeals (BORA) to be used in Miami Dade County and other areas where allowed by the Authority Having Jurisdiction (AHJ).

This NOA shall not be valid after the expiration date stated below. The Miami-Dade County Product Control Division (In Miami Dade County) and/or the AHJ (in areas other than Miami Dade County) reserve the right to have this product or material tested for quality assurance purposes. If this product or material fails to perform in the accepted manner, the manufacturer will incur the expense of such testing and the AHJ may immediately revoke, modify, or suspend the use of such product or material within their jurisdiction. BORA reserves the right to revoke this acceptance, if it is determined by Miami-Dade County Product Control Division that this product or material fails to meet the requirements of the applicable building code. This product is approved as described herein, and has been designed to comply with the Florida Building Code, including the High Velocity Hurricane Zone.

DESCRIPTION: Series "Pro-Tech 7" Aluminum Curtain Wall System – L.M.I.

APPROVAL DOCUMENT: Drawing No. **W02-109**, titled "Pro-Tech 7 Alum Curtain Wall System (L.M.I.)", sheets 1 through 15 of 15, dated 06/11/02, with revision C dated 02/12/10, prepared by Al-Farooq Corporation, signed and sealed by Javad Ahmad, P.E., bearing the Miami-Dade County Product Control Revision stamp with the Notice of Acceptance number and expiration date by the Miami-Dade County Product Control Division.

MISSILE IMPACT RATING: Large and Small Missile Impact Resistant

LABELING: Each unit shall bear a permanent label with the manufacturer's name or logo, city, state and following statement: "Miami-Dade County Product Control Approved", unless otherwise noted herein.

RENEWAL of this NOA shall be considered after a renewal application has been filed and there has been no change in the applicable building code negatively affecting the performance of this product.

TERMINATION of this NOA will occur after the expiration date or if there has been a revision or change in the materials, use, and/or manufacture of the product or process. Misuse of this NOA as an endorsement of any product, for sales, advertising or any other purposes shall automatically terminate this NOA. Failure to comply with any section of this NOA shall be cause for termination and removal of NOA.

ADVERTISEMENT: The NOA number preceded by the words Miami-Dade County, Florida, and followed by the expiration date may be displayed in advertising literature. If any portion of the NOA is displayed, then it shall be done in its entirety.

INSPECTION: A copy of this entire NOA shall be provided to the user by the manufacturer or its distributors and shall be available for inspection at the job site at the request of the Building Official. This NOA revises **NOA # 07-0625.02** and consists of this page 1 and evidence pages E-1 and E-2, as well as approval document mentioned above.

The submitted documentation was reviewed by **Manuel Perez, P.E.**



NOA No. 10-0412.05
Expiration Date: June 26, 2013
Approval Date: June 02, 2010
Page 1

Crawford Tracey Corporation

NOTICE OF ACCEPTANCE: EVIDENCE SUBMITTED

A. DRAWINGS

1. Manufacturer's die drawings and sections.
2. Drawing No. **W02-109**, titled "Pro-Tech 7 Alum Curtain Wall System (L.M.I.)", sheets 1 through 15 of 15, dated 06/11/02, with revision C dated 02/12/10, prepared by Al-Farooq Corporation, signed and sealed by Javad Ahmad, P.E.

B. TESTS

1. Test reports on: 1) Air Infiltration Test, per FBC, TAS 202-94
2) Uniform Static Air Pressure Test, Loading per FBC TAS 202-94
3) Water Resistance Test, per FBC, TAS 202-94
4) Large Missile Impact Test per FBC, TAS 201-94
5) Small Missile Impact Test per FBC, TAS 201-94
6) Cyclic Wind Pressure Loading per FBC, TAS 203-94
along with marked-up drawings and installation diagram of an Aluminum Curtain Wall System, prepared by American Test Lab of South Florida, Test Reports No. **ATL-0912.01-05**, dated 01/31/06, signed and sealed by William R. Mehner, P.E. and Henry Hattem, P.E.

(Submitted under previous NOA # 07-0625.02)

2. Test reports on: 1) Air Infiltration Test, per FBC, TAS 202-94
2) Uniform Static Air Pressure Test, Loading per FBC TAS 202-94
3) Water Resistance Test, per FBC, TAS 202-94
4) Large Missile Impact Test per FBC, TAS 201-94
5) Small Missile Impact Test per FBC, TAS 201-94
6) Cyclic Wind Pressure Loading per FBC, TAS 203-94


along with marked-up drawings and installation diagram of an Aluminum Curtain Wall System, prepared by American Test Lab of South Florida, Test Reports No. **ATL-1115.01-01**, dated 02/13/02, **ATL-0521.01-02** and **ATL-0719.02-02**, dated 09/11/02 and **ATL-1129.01-04**, dated 01/05/05, all signed and sealed by William R. Mehner, P.E. and Henry Hattem, P.E.

(Submitted under previous NOA # 03-0314.01)

C. CALCULATIONS

1. Anchor verification calculations and structural analysis, complying with FBC-2007, prepared by Al-Farooq Corporation, dated 2/26/10, signed and sealed by Javad Ahmad, P.E.

Complies with ASTM E1300-02/04


Manuel Perez, P.E.
Product Control Examiner
NOA No. 10-0412.05
Expiration Date: June 26, 2013
Approval Date: June 02, 2010

Crawford Tracey Corporation

NOTICE OF ACCEPTANCE: EVIDENCE SUBMITTED

D. QUALITY ASSURANCE

1. Miami Dade Building Code Compliance Office (BCCO).

E. MATERIAL CERTIFICATIONS

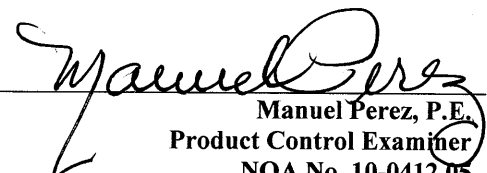
1. Notice of Acceptance No. **09-0312.03** issued to E.I. DuPont DeNemours & Co., Inc. for their "**DuPont Sentry Glass® Interlayer**" dated 05/13/09, expiring on 01/14/12.

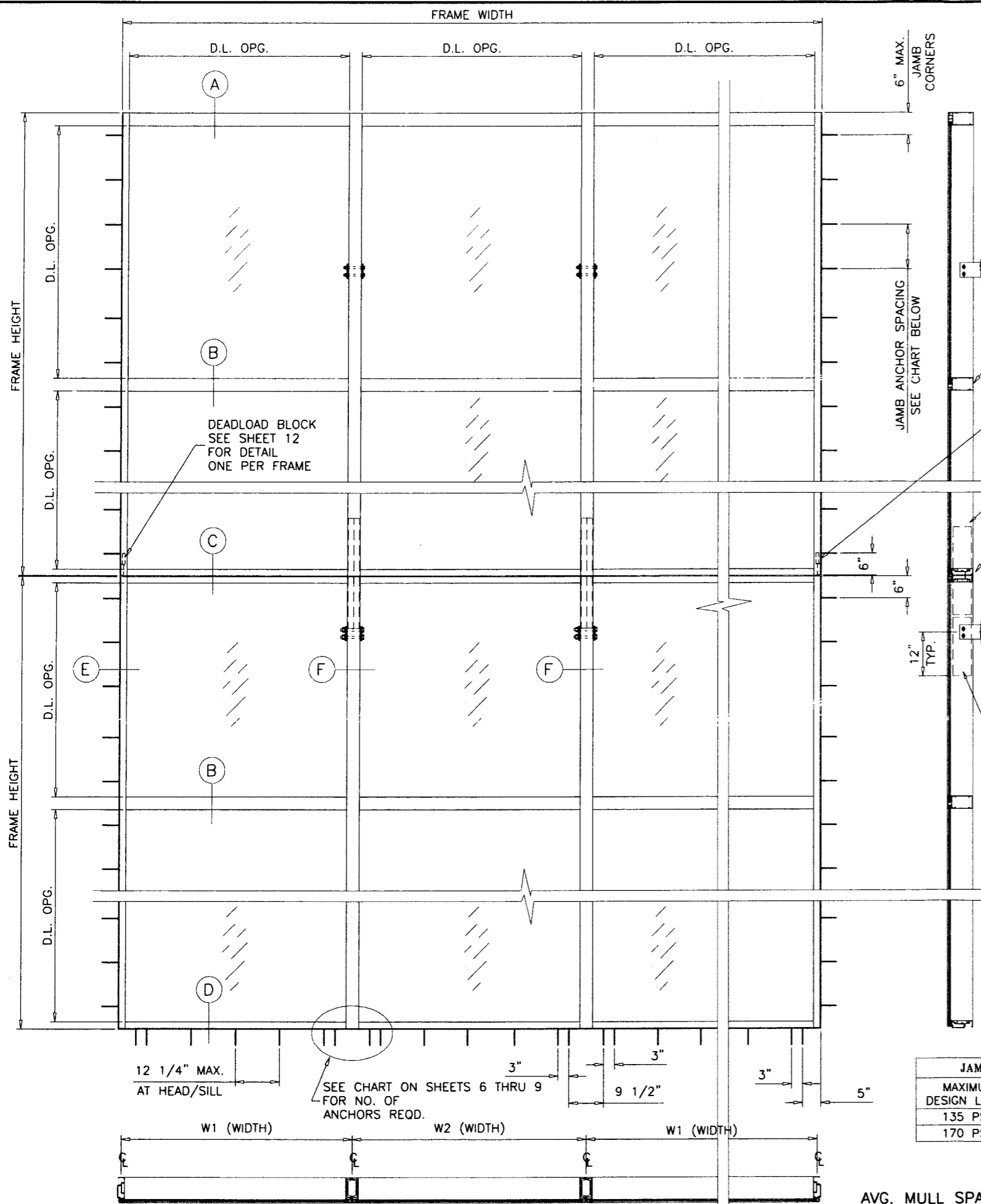
F. STATEMENTS

1. Statement letter of conformance and no financial interest, dated February 10, 2010, signed and sealed by Javad Ahmad, P.E.
2. Laboratory compliance letter for Test Report No. **ATLSF-0912.01-05**, issued by American Test Lab of South Florida, dated 01/31/06, signed and sealed by William R. Mehner, P.E. and Henry Hattem, P.E.
3. Laboratory compliance letter for Test Report No. **ATLSF-1129.01-04**, issued by American Test Lab of South Florida, dated 01/05/05, signed and sealed by William R. Mehner, P.E.
4. Laboratory compliance letter for Test Report No. **ATLSF-0719.02-02**, issued by American Test Lab of South Florida, dated 09/11/02, signed and sealed by William R. Mehner, P.E.
5. Laboratory compliance letter for Test Report No. **ATLSF-0521.01-02**, issued by American Test Lab of South Florida, dated 09/11/02, signed and sealed by William R. Mehner, P.E. and Henry Hattem, P.E.
6. Laboratory compliance letter for Test Report No. **ATLSF-1115.01-01**, issued by American Test Lab of South Florida, dated 02/13/02, signed and sealed by William R. Mehner, P.E. and Henry Hattem, P.E.

G. OTHER

1. Notice of Acceptance No. **07-0625.02**, issued to Crawford Tracey Corporation for their Series "Pro-Tech 7" Aluminum Curtain Wall System – L.M.I., approved on 03/06/08 and expiring on 06/26/13.


Manuel Perez, P.E.
Product Control Examiner
NOA No. 10-0412.05
Expiration Date: June 26, 2013
Approval Date: June 02, 2010



SEE SHEETS 13&14 FOR DETAILS

FRAME HORIZONTAL

DEADLOAD BLOCK SEE SHEET 12 FOR DETAIL ONE PER FRAME

SPLICE 24\"/>

EXPANSION JOINT

SEE SHEET 13&14 FOR DETAILS

ANCHOR REINF. OPTIONAL SEE SHEET 4 FOR CAPACITY

PRO-TECH 7 ALUM CURTAIN WALL SYSTEM

CURTAIN WALL SYSTEM IS RATED FOR LARGE & SMALL MISSILE IMPACT. SHUTTERS ARE NOT REQD.

CODE REQUIREMENTS FOR SAFEGUARDS MUST BE OBSERVED.

THIS PRODUCT HAS BEEN DESIGNED AND TESTED TO COMPLY WITH THE REQUIREMENTS OF THE FLORIDA BUILDING CODE 2007 EDITION INCLUDING HIGH VELOCITY HURRICANE ZONE (HVHZ).

WOOD BUCKS BY OTHERS, MUST BE ANCHORED PROPERLY TO TRANSFER LOADS TO THE STRUCTURE.

ANCHORS SHALL BE AS LISTED, SPACED AS SHOWN ON DETAILS, ANCHORS EMBEDMENT TO BASE MATERIAL SHALL BE BEYOND WALL DRESSING OR STUCCO.

ANCHORING OR LOADING CONDITIONS NOT SHOWN IN THESE DETAILS ARE NOT PART OF THIS APPROVAL.

A LOAD DURATION INCREASE IS USED IN DESIGN OF ANCHORS INTO WOOD ONLY.

MATERIALS INCLUDING BUT NOT LIMITED TO STEEL/METAL SCREWS, THAT COME INTO CONTACT WITH OTHER DISSIMILAR MATERIALS SHALL MEET THE REQUIREMENTS OF 2007 FLORIDA BLDG. CODE SECTION 2003.8.4.

INSTRUCTIONS:

USE CHARTS AS FOLLOWS.

- STEP 1** DETERMINE DESIGN WIND LOAD REQUIREMENT BASED ON WIND VELOCITY, BLDG. HEIGHT, WIND ZONE USING APPLICABLE ASCE 7 STANDARD.
- STEP 2** CHECK MULLION CAPACITY FOR A GIVEN SPACING AND HEIGHT USING CHARTS ON SHEETS 2 & 3 FOR SINGLE SPANS, AND CHARTS ON SHEET 4 FOR EQUAL MULTIPLE SPANS.
- STEP 3** SEE CHARTS ON SHEET 5 FOR DESIGN LOAD CAPACITY OF DESIRED GLASS SIZE BASED ON APPLICABLE WIND DURATION.
- STEP 4** USING CHART ON SHEET 6 THRU 9 SELECT ANCHOR OPTION WITH DESIGN RATING MORE THAN DESIGN LOAD SPECIFIED IN STEP 1 ABOVE.
- STEP 5** THE LOWEST VALUE RESULTING FROM STEPS 2, 3 AND 4 SHALL APPLY TO ENTIRE SYSTEM.

LAMINATED GLASS
LARGE MISSILE IMPACT

JAMB ANCHOR SPACING		
MAXIMUM DESIGN LOADS	ANCHORS TYPE 'A'	ANCHORS TYPE 'B' & 'C'
135 PSF	9" O.C.	10" O.C.
170 PSF	7" O.C.	8" O.C.

Engr: JAVAD AHMAD
CIVIL
FLA. PE # 70592
C.A.N. 3538

PRODUCT REVISION:
complying with the Florida Building Code
Amendment No. 10-0412.05
Expiration Date: June 26, 2013

JA
MAR 18 2010

Youssef Pera
Sales/Design Product Control
Division

$$\text{AVG. MULL SPACING} = \frac{W1 + W2}{2}$$

TYPICAL ELEVATION

af c
AL-FAROOQ CORPORATION
ENGINEERS & PRODUCT DEVELOPMENT
1235 S.W. 87 AVE
MIAMI, FLORIDA 33174
TEL. (305) 264-8100 FAX. (305) 262-6978
STORE/W02-109CTC

PRO-TECH 7 ALUM CURTAIN WALL SYSTEM (L.M.I.)
CRAWFORD TRACEY CORPORATION
3301 SW 13TH DRIVE
DEERFIELD BEACH, FL. 33442-8101
TEL. (954) 698-6888 FAX. (954) 698-6889

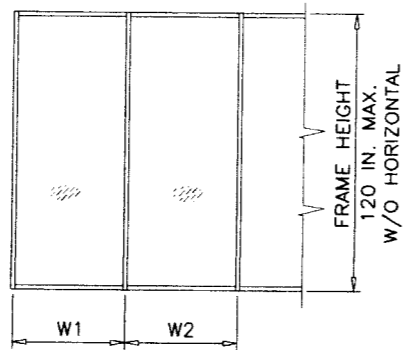
no	date	description
A	5.27.03	NO CHANGE THIS SHEET
B	01.23.07	UPDATED FOR 2004 FBC
C	02.12.10	UPDATED FOR 2007 FBC

date:	06-11-02
scale:	3/8"=1'-0"
dr. by:	HAMID
chk. by:	

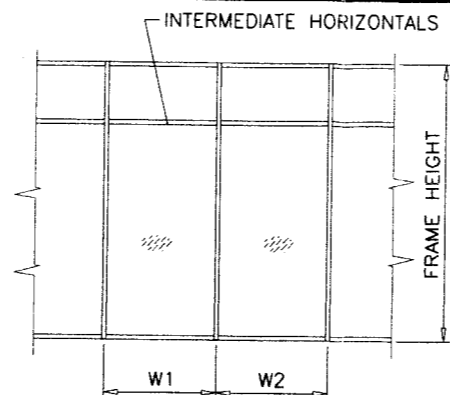
drawing no.
W02-109
sheet 1 of 15

MULLION LOAD CAPACITY - PSF
SINGLE SPANS
(WITH OR WITHOUT INTERMEDIATE HORIZONTALS)

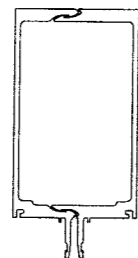
NOMINAL DIMS.		WITHOUT REINFORCING		
WIDTH (W)	FRAME HEIGHT	EXT.(+)	INT.(-)	
36"	72"	120.0	185.0	
39"		120.0	185.0	
42"		120.0	185.0	
45"		120.0	185.0	
48"		120.0	185.0	
51"		120.0	185.0	
54"		120.0	185.0	
57"		120.0	185.0	
60"	78"	120.0	185.0	
63"		120.0	185.0	
36"		84"	120.0	185.0
39"			120.0	185.0
42"			120.0	185.0
45"			120.0	185.0
48"			120.0	185.0
51"			120.0	185.0
54"	120.0		185.0	
57"	120.0		185.0	
36"	90"	120.0	185.0	
39"		120.0	185.0	
42"		120.0	185.0	
45"		120.0	185.0	
48"		120.0	185.0	
36"	96"	120.0	185.0	
39"		120.0	185.0	
42"		120.0	185.0	
45"		120.0	185.0	
36"	102"	120.0	185.0	
39"		120.0	185.0	
42"		120.0	185.0	
36"	106"	120.0	185.0	
39"		120.0	185.0	
42"		120.0	185.0	
44"		120.0	185.0	



WIDTH (w) = W1
AT FRAME JAMB

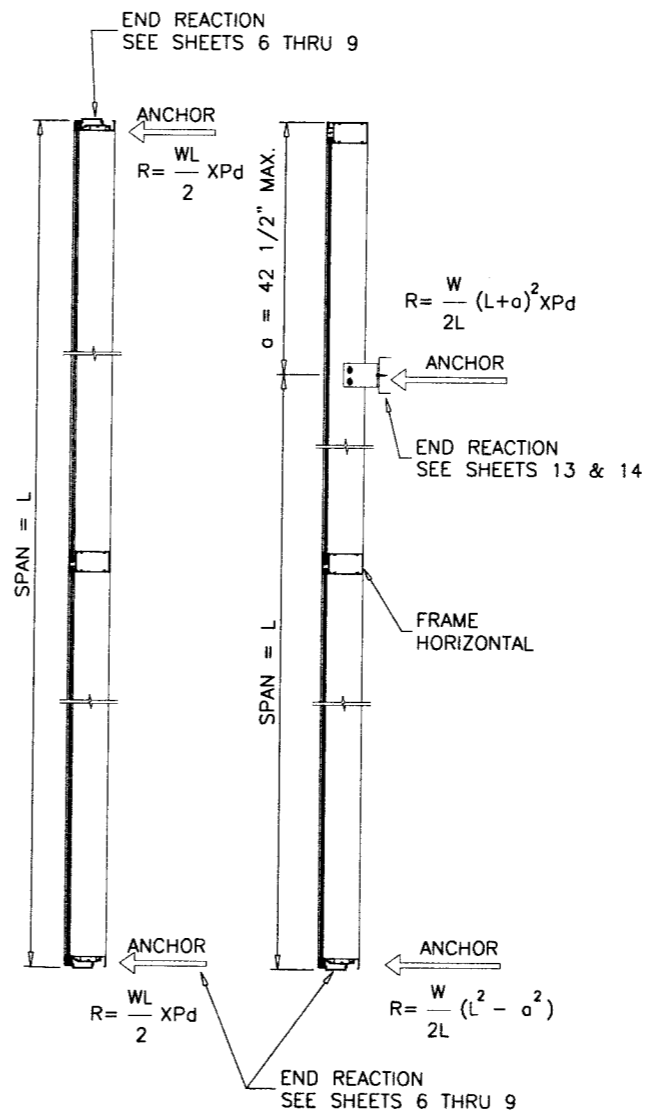


WIDTH (w) = $\frac{W1 + W2}{2}$
AT FRAME MULLION



WITHOUT REINFORCING

Ix IN ⁴	Sx IN ³
25.0382	6.5475



Engr: JAVAD AHMAD
CIVIL
FLA. PE # 70592
C.A.N. 3538

J.A.

MAR 18 2010

PRODUCT REVISED
as complying with the Florida
Building Code
Adopted by 10-0412.05
June 26, 2013

By *Manuel Jara*
Product Development Division

af c
AL-FAROOQ CORPORATION
ENGINEERS & PRODUCT DEVELOPMENT
1235 S.W. 87 AVE
MIAMI, FLORIDA 33174
TEL. (305) 264-8100 FAX. (305) 262-6978
STORE W07-51CTC

PRO-TECH 7 ALUM CURTAIN WALL SYSTEM (S.M.I.)
CRAWFORD TRACEY CORPORATION
3301 SW 13TH DRIVE
DEERFIELD BEACH, FL. 33442-8101
TEL. (954) 698-6888 FAX. (954) 698-6889

no.	date	description
A	03.02.10	NO CHANGE THIS SHEET

revisions:

date: 05-29-07
scale: -
dr. by: HAMID
chk. by:

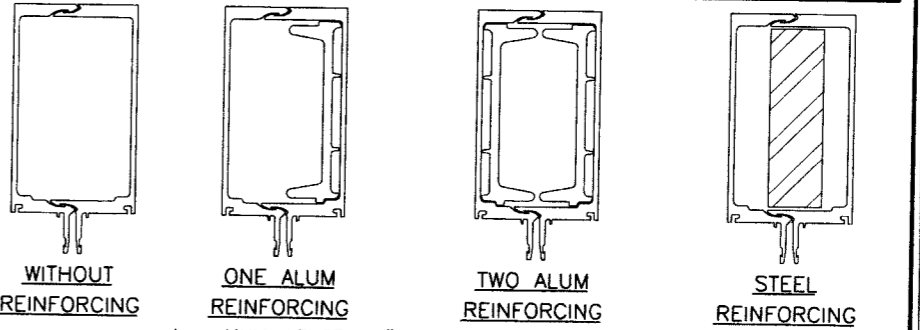
drawing no.
W07-51

sheet 2 of 15

MULLION LOAD CAPACITY - PSF SINGLE SPANS (WITH OR WITHOUT INTERMEDIATE HORIZONTALS)							
NOMINAL DIMS.		WITHOUT REINFORCING	ONE ALUM REINFORCING	TWO ALUM REINFORCING	STEEL REINFORCING		
WIDTH (W)	FRAME HEIGHT	EXT.(+)/INT.(-)	EXT.(+)/INT.(-)	EXT.(+)/INT.(-)	EXT.(+)	INT.(-)	
36"	108"		120.0	120.0	120.0	135.0	
39"			120.0	120.0	120.0	120.0	135.0
42"			120.0	120.0	120.0	120.0	135.0
45"			120.0	120.0	120.0	120.0	135.0
48"			120.0	120.0	120.0	120.0	135.0
51"			120.0	120.0	120.0	120.0	135.0
54"			120.0	120.0	120.0	120.0	135.0
57"			120.0	120.0	120.0	120.0	135.0
60"			120.0	120.0	120.0	120.0	135.0
63"			120.0	120.0	120.0	120.0	135.0
66"			120.0	120.0	120.0	120.0	135.0
69"			120.0	120.0	120.0	120.0	135.0
72"		120.0	120.0	120.0	120.0	135.0	
36"	114"		120.0	120.0	120.0	135.0	
39"			120.0	120.0	120.0	120.0	135.0
42"			120.0	120.0	120.0	120.0	135.0
45"			120.0	120.0	120.0	120.0	135.0
48"			120.0	120.0	120.0	120.0	135.0
51"			120.0	120.0	120.0	120.0	135.0
54"			120.0	120.0	120.0	120.0	135.0
57"			120.0	120.0	120.0	120.0	135.0
60"			120.0	120.0	120.0	120.0	135.0
63"			120.0	120.0	120.0	120.0	135.0
66"			120.0	120.0	120.0	120.0	135.0
69"			120.0	120.0	120.0	120.0	135.0
72"		118.8	118.8	118.8	120.0	135.0	
36"	120"		120.0	120.0	120.0	135.0	
39"			120.0	120.0	120.0	120.0	135.0
42"			120.0	120.0	120.0	120.0	135.0
45"			120.0	120.0	120.0	120.0	135.0
48"			120.0	120.0	120.0	120.0	135.0
51"			120.0	120.0	120.0	120.0	135.0
54"			120.0	120.0	120.0	120.0	135.0
57"			120.0	120.0	120.0	120.0	135.0
60"			120.0	120.0	120.0	120.0	135.0
63"			120.0	120.0	120.0	120.0	135.0
66"			120.0	120.0	120.0	120.0	135.0
69"			117.8	117.8	117.8	120.0	135.0
72"		112.9	112.9	112.9	120.0	135.0	
36"	126"		120.0	120.0	120.0	135.0	
39"			120.0	120.0	120.0	120.0	135.0
42"			120.0	120.0	120.0	120.0	135.0
45"			120.0	120.0	120.0	120.0	135.0
48"			120.0	120.0	120.0	120.0	135.0
51"			120.0	120.0	120.0	120.0	135.0
54"			120.0	120.0	120.0	120.0	135.0
57"			120.0	120.0	120.0	120.0	135.0
60"			120.0	120.0	120.0	120.0	135.0
63"			120.0	120.0	120.0	120.0	135.0
66"			115.9	117.3	117.3	120.0	135.0
69"			110.8	112.2	112.2	120.0	135.0
72"		106.2	107.5	107.5	120.0	135.0	

MULLION LOAD CAPACITY - PSF SINGLE SPANS (WITH OR WITHOUT INTERMEDIATE HORIZONTALS)							
NOMINAL DIMS.		WITHOUT REINFORCING	ONE ALUM REINFORCING	TWO ALUM REINFORCING	STEEL REINFORCING		
WIDTH (W)	FRAME HEIGHT	EXT.(+)/INT.(-)	EXT.(+)/INT.(-)	EXT.(+)/INT.(-)	EXT.(+)	INT.(-)	
36"	132"		120.0	120.0	120.0	135.0	
39"			120.0	120.0	120.0	120.0	135.0
42"			120.0	120.0	120.0	120.0	135.0
45"			120.0	120.0	120.0	120.0	135.0
48"			120.0	120.0	120.0	120.0	135.0
51"			120.0	120.0	120.0	120.0	135.0
54"			120.0	120.0	120.0	120.0	135.0
57"			116.7	120.0	120.0	120.0	135.0
60"			110.9	120.0	120.0	120.0	135.0
63"			105.6	117.3	117.3	120.0	135.0
66"			100.8	112.0	112.0	120.0	135.0
69"			96.4	107.1	107.1	120.0	135.0
72"		92.4	102.6	102.6	120.0	135.0	
36"	138"		120.0	120.0	120.0	135.0	
39"			120.0	120.0	120.0	120.0	135.0
42"			120.0	120.0	120.0	120.0	135.0
45"			120.0	120.0	120.0	120.0	135.0
48"			120.0	120.0	120.0	120.0	135.0
51"			114.1	120.0	120.0	120.0	135.0
54"			107.8	120.0	120.0	120.0	135.0
57"			102.1	120.0	120.0	120.0	135.0
60"			97.0	117.8	117.8	120.0	135.0
63"			92.4	112.2	112.2	120.0	135.0
66"			88.2	107.1	107.1	120.0	135.0
69"			84.4	102.4	102.4	120.0	135.0
72"		80.8	98.2	98.2	120.0	135.0	
36"	144"		120.0	120.0	120.0	135.0	
39"			120.0	120.0	120.0	120.0	135.0
42"			120.0	120.0	120.0	120.0	135.0
45"			113.9	120.0	120.0	120.0	135.0
48"			106.7	120.0	120.0	120.0	135.0
51"			100.5	120.0	120.0	120.0	135.0
54"			94.9	120.0	120.0	120.0	135.0
57"			89.9	114.0	118.8	120.0	135.0
60"			85.4	108.3	112.9	120.0	135.0
63"			81.3	103.1	107.5	120.0	135.0
66"			77.6	98.4	102.6	120.0	135.0
69"			74.3	94.1	98.2	120.0	135.0
72"		71.2	90.2	94.1	94.1	94.1	
36"	150"		120.0	120.0	120.0	135.0	
39"			116.2	120.0	120.0	120.0	135.0
42"			107.9	120.0	120.0	120.0	135.0
45"			100.7	120.0	120.0	120.0	135.0
48"			94.4	119.7	120.0	120.0	135.0
51"			88.9	112.7	120.0	120.0	135.0
54"			83.9	106.4	120.0	120.0	135.0
57"			79.5	100.8	114.1	120.0	135.0
60"			75.5	95.8	108.4	120.0	135.0
63"			72.0	91.2	103.2	120.0	135.0
66"			68.7	87.1	98.5	120.0	135.0
69"			65.7	83.3	94.2	94.2	94.2
72"		63.0	79.8	90.3	90.3	90.3	

MULLION LOAD CAPACITY - PSF SINGLE SPANS (WITH OR WITHOUT INTERMEDIATE HORIZONTALS)							
NOMINAL DIMS.		WITHOUT REINFORCING	ONE ALUM REINFORCING	TWO ALUM REINFORCING	STEEL REINFORCING		
WIDTH (W)	FRAME HEIGHT	EXT.(+)/INT.(-)	EXT.(+)/INT.(-)	EXT.(+)/INT.(-)	EXT.(+)	INT.(-)	
36"	156"		111.9	120.0	120.0	135.0	
39"			103.3	120.0	120.0	120.0	135.0
42"			95.9	120.0	120.0	120.0	135.0
45"			89.5	113.5	120.0	120.0	135.0
48"			84.0	106.4	120.0	120.0	135.0
51"			79.0	100.2	120.0	120.0	135.0
54"			74.6	94.6	114.6	120.0	135.0
57"			70.7	89.6	108.6	120.0	135.0
60"			67.2	85.1	103.1	120.0	135.0
63"			64.0	81.1	98.2	120.0	135.0
66"			61.1	77.4	93.8	93.8	93.8
69"			58.4	74.0	89.7	89.7	89.7
36"	162"		100.0	120.0	120.0	135.0	
39"			92.3	117.0	120.0	120.0	135.0
42"			85.7	108.6	120.0	120.0	135.0
45"			80.0	101.4	120.0	120.0	135.0
48"			75.0	95.0	115.1	120.0	135.0
51"			70.6	89.4	108.3	120.0	135.0
54"			66.6	84.5	102.3	120.0	135.0
57"			63.1	80.0	96.9	120.0	135.0
60"			60.0	76.0	92.1	120.0	135.0
63"			57.1	72.4	87.7	87.7	87.7
66"			54.5	69.1	83.7	83.7	83.7
36"		168"		89.6	113.6	120.0	135.0
39"			82.7	104.9	120.0	120.0	135.0
42"			76.8	97.4	118.0	120.0	135.0
45"			71.7	90.9	110.1	120.0	135.0
48"			67.2	85.2	103.2	120.0	135.0
51"			63.3	80.2	97.1	120.0	135.0
54"			59.7	75.7	91.7	120.0	135.0
57"			56.6	71.8	86.9	120.0	135.0
60"			53.8	68.2	82.6	120.0	134.9
63"			51.2	64.9	78.6	78.6	78.6



L = MULL LENGTH-4" L = MULL LENGTH-4" L = MULL LENGTH-6"

Ix IN ⁴	Sx IN ³	Ix IN ⁴	Sx IN ³	Ix IN ⁴	Sx IN ³
25.0382	6.5475	31.7421	8.3005	38.4460	10.0536

ALUMINUM	Ix IN ⁴	Sx IN ³
STEEL	25.0382	6.5475
TOTAL	15.6250	6.2500
Ix ALUM + Ix STL X 2.9	70.3507	

Engr: JAVAD AHMAD
CIVIL
FLA. PE # 70592
C.A.N. 3538

JA

MAR 18 2010

PRODUCT REVISED
as complying with the Florida
Building Code
Acceptance No. 10-0412-05
Expiration Date June 28, 2013

Manuel Perez

Miami Guide Product Control
Division

afC

AL-FAROOQ CORPORATION
ENGINEERS & PRODUCT DEVELOPMENT
1235 S.W. 87 AVE
MIAMI, FLORIDA 33174
TEL. (305) 264-8100 FAX. (305) 262-6978

PRO-TECH 7 ALUM CURTAIN WALL SYSTEM (S.M.I.)

CRAWFORD TRACEY CORPORATION
3301 SW 13TH DRIVE
DEERFIELD BEACH, FL. 33442-8101
TEL. (954) 698-6888 FAX. (954) 698-6889

revisions:	no.	date	description
	A	03.02.10	NO CHANGE THIS SHEET

date:	05-29-07
scale:	-
dr. by:	HAMID
chk. by:	

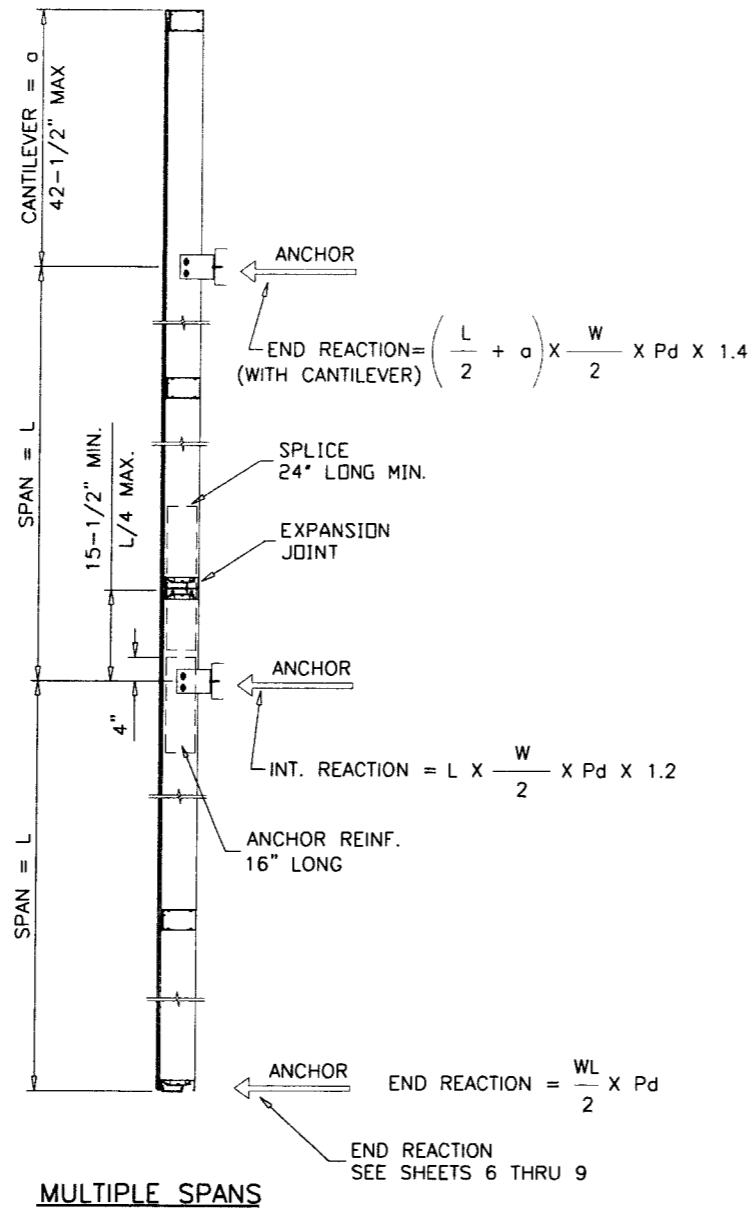
drawing no. **W07-51**

sheet 3 of 15

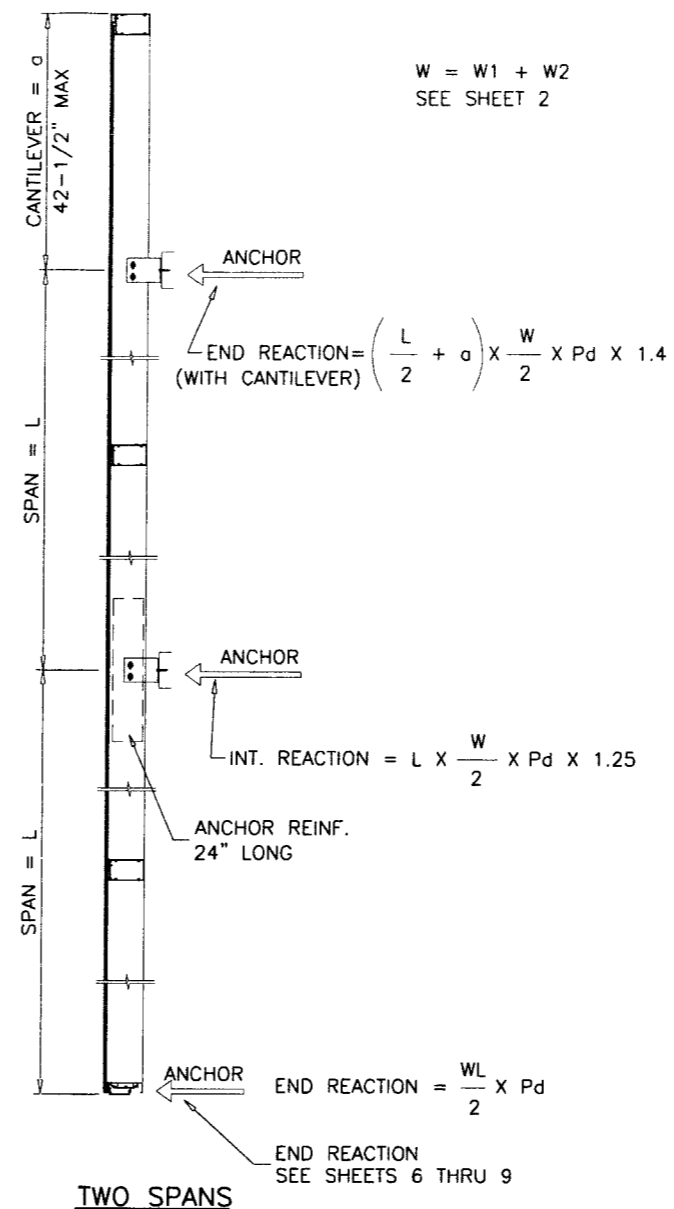
STORE W07-51CTC

MULLION LOAD CAPACITY - PSF
MULTIPLE SPANS

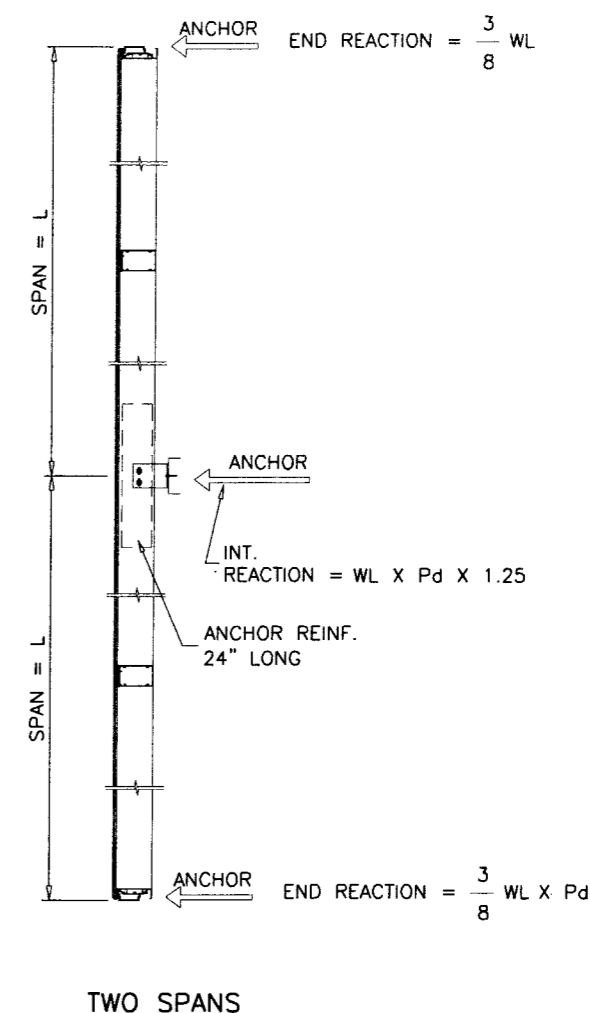
AVERAGE MULL SPACING	SPAN = L	WITHOUT REINFORCING	WITH ANCHOR REINF.
		EXT.(+)/INT.(-)	EXT.(+)/INT.(-)
36"	120"	120.0	120.0
42"		120.0	120.0
48"		120.0	120.0
54"		120.0	120.0
60"		120.0	120.0
66"		120.0	120.0
72"		117.4	117.4
36"	126"	120.0	120.0
42"		120.0	120.0
48"		120.0	120.0
54"		120.0	120.0
60"		120.0	120.0
66"		120.0	120.0
72"		110.9	110.9
36"	132"	120.0	120.0
42"		120.0	120.0
48"		120.0	120.0
54"		120.0	120.0
60"		120.0	120.0
66"		114.8	114.8
72"		105.2	105.2
36"	138"	120.0	120.0
42"		120.0	120.0
48"		120.0	120.0
54"		120.0	120.0
60"		120.0	120.0
66"		109.2	109.2
72"		100.1	100.1
36"	144"	120.0	120.0
42"		120.0	120.0
48"		120.0	120.0
54"		120.0	120.0
60"		110.2	114.5
66"		100.2	104.1
72"		91.9	95.4
36"	150"	120.0	120.0
42"		120.0	120.0
48"		120.0	120.0
54"		112.1	120.0
60"		100.9	109.5
66"		91.7	99.5
72"		84.1	91.2
36"	156"	120.0	120.0
42"		120.0	120.0
48"		115.8	120.0
54"		102.9	116.5
60"		92.6	104.9
66"	84.2	95.3	
36"	162"	120.0	120.0
42"		120.0	120.0
48"		106.8	120.0
54"		94.9	111.8
60"		85.4	100.6
66"	77.6	91.5	
36"	168"	120.0	120.0
42"		112.9	120.0
48"		98.8	120.0
54"		87.8	107.5
60"		79.0	96.8



MULTIPLE SPANS
MULTIPLE SPANS WITH OR WITHOUT CANTILEVER
USE TABLE ON THIS SHEET.

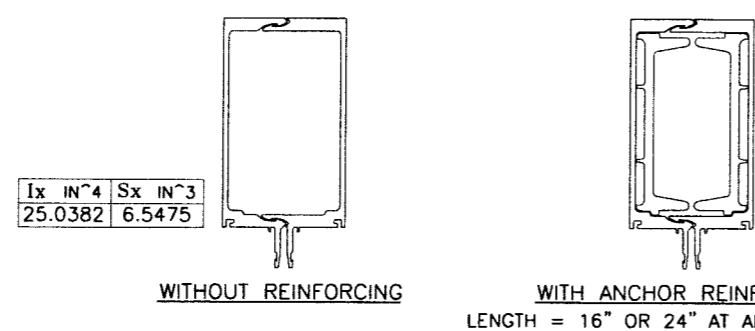


TWO SPANS
TWO SPANS WITH CANTILEVER
AND WITHOUT SPLICE/EXPANSION JOINT
USE TABLE ON THIS SHEET.



TWO SPANS
TWO SPANS WITHOUT CANTILEVER
AND WITHOUT SPLICE/EXPANSION JOINT
USE TABLE ON THIS SHEET.

UNEQUAL SPANS TO BE CHECKED ON JOB TO JOB BASIS
END REACTIONS MAY CHANGE WITH LOCATION OF
EXPANSION JOINT AND LENGTH OF CANTILEVER
WORST CONDITION SHOWN.



Engr: JAVAD AHMAD
CIVIL
FLA. PE # 70592
C.A.N. 3538
MAR 18 2010

PRODUCT REVIEWED
as complying with the Florida
Building Code
Adopted on 10-04-05
Expiration Date June 26, 2013
by: *Manuel Perez*

AL-FAROOQ CORPORATION
ENGINEERS & PRODUCT DEVELOPMENT
1235 S.W. 87 AVE
MIAMI, FLORIDA 33174
TEL. (305) 264-8100 FAX. (305) 262-6978
STORE \W07-51CTC

PRO-TECH 7 ALUM CURTAIN WALL SYSTEM (S.M.I.)
CRAWFORD TRACEY CORPORATION
3301 SW 13TH DRIVE
DEERFIELD BEACH, FL. 33442-8101
TEL. (954) 698-6888 FAX. (954) 698-6889

no	date	by	description
A	03.02.10		NO CHANGE THIS SHEET

revisions:

date: 05-29-07
scale: -
dr. by: HAMID
chk. by:

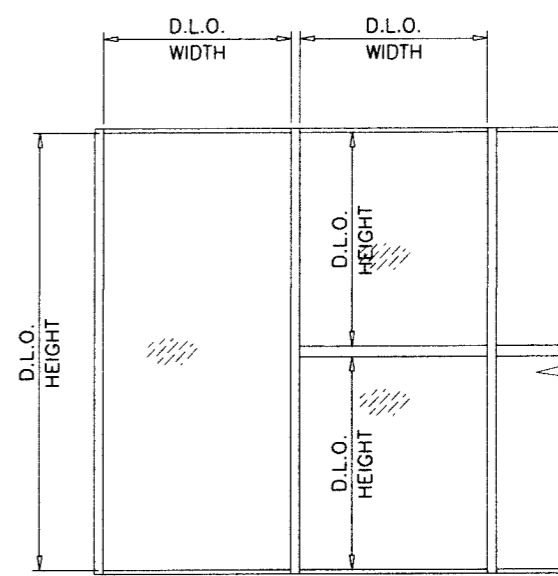
drawing no.
W07-51
sheet 4 of 15

GLASS LOAD CAPACITY - PSF				
NOMINAL DIMS.		GLASS TYPE 'A'	GLASS TYPE 'B'	
D.L.O. WIDTH	D.L.O. HEIGHT	EXT. (+) INT. (-)	EXT. (+) INT. (-)	
30"	54"	135.0	170.0	
33"		135.0	170.0	
36"		135.0	170.0	
39"		135.0	170.0	
42"		135.0	170.0	
45"		135.0	170.0	
48"		135.0	120.0	
51"		135.0	120.0	
54"		135.0	120.0	
57"		135.0	120.0	
60"		135.0	120.0	
63"		135.0	120.0	
66"		80.0	120.0	
69"		80.0	120.0	
72"		80.0	-	
30"		60"	135.0	170.0
33"	135.0		170.0	
36"	135.0		170.0	
39"	135.0		170.0	
42"	135.0		120.0	
45"	135.0		120.0	
48"	135.0		120.0	
51"	135.0		120.0	
54"	135.0		120.0	
57"	135.0		120.0	
60"	80.0		120.0	
63"	80.0		120.0	
66"	80.0		120.0	
69"	80.0		120.0	
30"	66"		135.0	170.0
33"			135.0	170.0
36"		135.0	170.0	
42"		135.0	120.0	
45"		135.0	120.0	
48"		135.0	120.0	
51"		135.0	120.0	
54"		80.0	120.0	
57"		80.0	120.0	
60"		80.0	120.0	
63"		80.0	120.0	
66"		80.0	120.0	
69"		80.0	120.0	
30"		72"	135.0	170.0
33"			135.0	170.0
42"			135.0	120.0
45"	135.0		120.0	
48"	135.0		120.0	
51"	80.0		120.0	
54"	80.0		120.0	
57"	80.0		120.0	
60"	80.0		120.0	
63"	80.0		120.0	
66"	80.0		120.0	
69"	80.0		120.0	

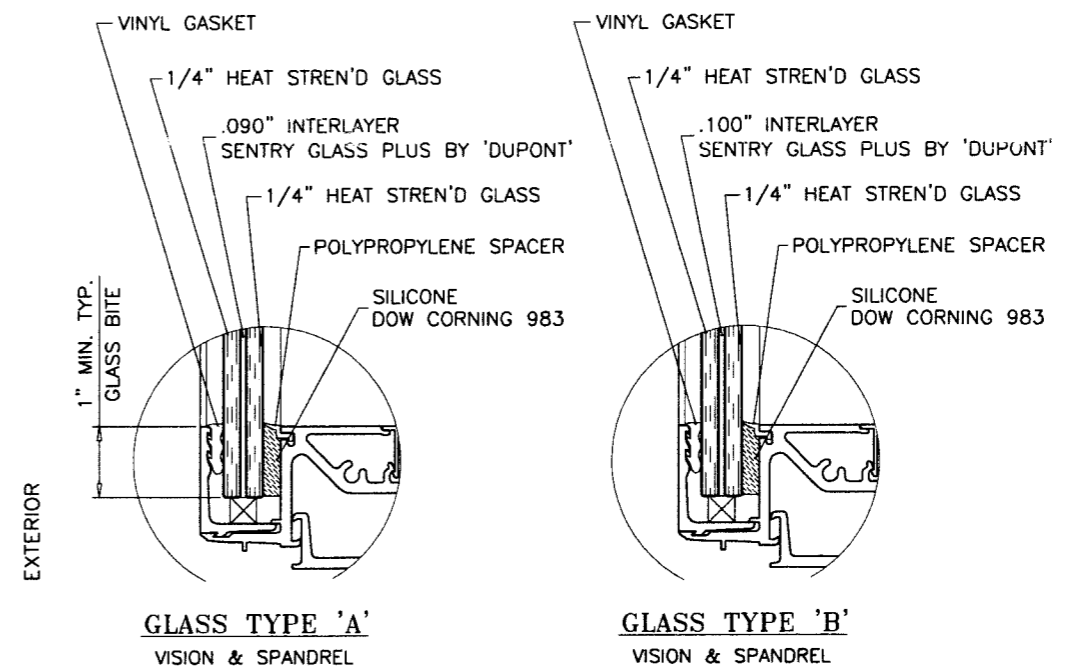
GLASS LOAD CAPACITY - PSF				
NOMINAL DIMS.		GLASS TYPE 'A'	GLASS TYPE 'B'	
D.L.O. WIDTH	D.L.O. HEIGHT	EXT. (+) INT. (-)	EXT. (+) INT. (-)	
42"	78"	135.0	120.0	
45"		135.0	120.0	
48"		80.0	120.0	
51"		80.0	120.0	
54"		80.0	120.0	
57"		80.0	120.0	
60"		80.0	120.0	
63"		80.0	120.0	
66"		80.0	120.0	
69"		-	120.0	
42"		84"	135.0	120.0
45"			80.0	120.0
48"			80.0	120.0
51"			80.0	120.0
54"			80.0	120.0
57"			80.0	120.0
60"	80.0		120.0	
63"	45.0		120.0	
66"	45.0		120.0	
69"	-		120.0	
30"	90"		135.0	120.0
33"			135.0	120.0
36"			135.0	120.0
39"			135.0	120.0
42"			120.0	120.0
45"			120.0	120.0
48"		120.0	120.0	
51"		120.0	120.0	
54"		120.0	120.0	
57"		120.0	120.0	
60"		45.0	120.0	
63"		45.0	120.0	
66"		45.0	117.3	
69"		-	114.5	
30"		96"	135.0	120.0
33"			135.0	120.0
36"	135.0		120.0	
39"	120.0		120.0	
42"	120.0		120.0	
45"	120.0		120.0	
48"	120.0		120.0	
51"	120.0		120.0	
54"	120.0		120.0	
57"	45.0		120.0	
60"	45.0		116.4	
63"	45.0		112.9	
66"	45.0		110.1	
69"	-		108.0	

GLASS LOAD CAPACITY - PSF				
NOMINAL DIMS.		GLASS TYPE 'A'	GLASS TYPE 'B'	
D.L.O. WIDTH	D.L.O. HEIGHT	EXT. (+) INT. (-)	EXT. (+) INT. (-)	
30"	102"	135.0	120.0	
33"		135.0	120.0	
36"		80.0	120.0	
39"		80.0	120.0	
42"		80.0	120.0	
45"		80.0	120.0	
48"		80.0	120.0	
51"		80.0	120.0	
54"		45.0	118.5	
57"		45.0	113.4	
60"		45.0	109.2	
63"		45.0	105.9	
66"		45.0	103.2	
69"		-	101.3	
30"		108"	135.0	120.0
33"			80.0	120.0
36"	80.0		120.0	
39"	80.0		120.0	
42"	80.0		120.0	
45"	80.0		120.0	
48"	80.0		120.0	
51"	45.0		117.7	
54"	45.0		111.8	
57"	45.0		106.4	
60"	45.0		100.9	
63"	45.0		98.8	
66"	45.0		96.9	
30"	114"		135.0	120.0
33"			80.0	120.0
36"			80.0	120.0
39"		80.0	120.0	
42"		80.0	120.0	
45"		80.0	120.0	
48"		45.0	119.5	
51"		45.0	111.9	
54"		45.0	105.6	
57"		45.0	97.9	
60"		45.0	95.3	
63"		45.0	93.3	
42"		120"	80.0	120.0
45"			45.0	120.0
48"			45.0	114.1
51"			45.0	106.6
54"	45.0		98.5	
57"	45.0		94.0	
60"	45.0		92.2	
42"	126"		45.0	120.0
45"			45.0	119.1
48"			45.0	109.7
51"			45.0	102.4
54"			45.0	95.2
57"			45.0	90.6

GLASS LOAD CAPACITY - PSF			
NOMINAL DIMS.		GLASS TYPE 'A'	GLASS TYPE 'B'
D.L.O. WIDTH	D.L.O. HEIGHT	EXT. (+) INT. (-)	EXT. (+) INT. (-)
42"	132"	45.0	120.0
45"		45.0	114.4
48"		45.0	106.1
51"		45.0	98.3
54"		45.0	92.4
42"	138"	45.0	120.0
45"		45.0	112.5
48"		45.0	103.5
51"		45.0	95.9
42"		144"	45.0
45"	45.0		111.0
48"	45.0		101.2
42"	150"	45.0	120.0
45"		45.0	109.4
48"		45.0	100.6



NOTE:
GLASS CAPACITIES ON THIS SHEET ARE
BASED ON ASTM E1300-04 (3 SEC. GUSTS).



Engr: JAVAD AHMAD
CIVIL
FLA. PE # 70592
C.A.N. 3538

MAR 18 2010

PRODUCT REVISED
in compliance with the Florida
Building Code
Approval No. 10-0412-05
Expiry Date: June 30, 2013

Muhammad Peraz
Miami Trade Product Control
Division

afC
AL-FAROOQ CORPORATION
ENGINEERS & PRODUCT DEVELOPMENT
1235 S.W. 87 AVE
MIAMI, FLORIDA 33174
TEL. (305) 264-8100 FAX. (305) 262-6978
STORE/WO2-109CTC

PRO-TECH 7 ALUM CURTAIN WALL SYSTEM
CRAWFORD TRACEY CORPORATION
3301 SW 13TH DRIVE
DEERFIELD BEACH, FL. 33442-8101
TEL. (954) 698-6888 FAX. (954) 698-6889

no	date	description
A	5.27.03	REV. PER BCCO COMMENTS
B	01.23.07	UPDATED FOR 2004 FBC
C	02.12.10	NO CHANGE THIS SHEET

date: 06-11-02
scale: 3/8" = 1"
dr. by: HAMID
chk. by:

drawing no.
W02-109
sheet 5 of 15

ANCHOR LOAD CAPACITY - PSF EXT.(+) & INT.(-)								
NOMINAL DIMS.		ANCHORS TYPE 'A'			ANCHORS TYPE 'B'		ANCHORS TYPE 'C'	
WIDTH (W)	FRAME HEIGHT	A3	A4	A5	B2	B3	C2	C3
36"	72"	170.0	170.0	170.0	170.0	170.0	170.0	170.0
39"		170.0	170.0	170.0	170.0	170.0	170.0	170.0
42"		170.0	170.0	170.0	170.0	170.0	170.0	170.0
45"		170.0	170.0	170.0	170.0	170.0	170.0	170.0
48"		170.0	170.0	170.0	170.0	170.0	170.0	170.0
51"		170.0	170.0	170.0	170.0	170.0	170.0	170.0
54"		170.0	170.0	170.0	170.0	170.0	170.0	170.0
57"		164.2	170.0	170.0	161.3	170.0	170.0	170.0
60"		156.0	170.0	170.0	167.2	170.0	170.0	170.0
63"		148.6	170.0	170.0	159.2	170.0	170.0	170.0
66"		151.3	170.0	170.0	152.0	170.0	170.0	170.0
69"		144.7	170.0	170.0	157.5	170.0	170.0	170.0
72"	138.4	170.0	170.0	150.9	170.0	170.0	170.0	
36"	78"	170.0	170.0	170.0	170.0	170.0	170.0	170.0
39"		170.0	170.0	170.0	170.0	170.0	170.0	170.0
42"		170.0	170.0	170.0	170.0	170.0	170.0	170.0
45"		170.0	170.0	170.0	170.0	170.0	170.0	170.0
48"		168.0	170.0	170.0	170.0	170.0	170.0	170.0
51"		158.1	170.0	170.0	166.4	170.0	170.0	170.0
54"		160.0	170.0	170.0	157.2	170.0	170.0	170.0
57"		151.6	170.0	170.0	148.9	170.0	170.0	170.0
60"		144.0	170.0	170.0	154.3	170.0	170.0	170.0
63"		137.1	170.0	170.0	147.0	170.0	170.0	170.0
66"		139.6	165.8	170.0	140.3	170.0	170.0	170.0
69"		133.6	158.6	170.0	145.4	170.0	170.0	170.0
72"	128.0	160.0	170.0	139.3	170.0	170.0	170.0	
36"	84"	170.0	170.0	170.0	170.0	170.0	170.0	170.0
39"		170.0	170.0	170.0	170.0	170.0	170.0	170.0
42"		170.0	170.0	170.0	170.0	170.0	170.0	170.0
45"		166.4	170.0	170.0	159.2	170.0	170.0	170.0
48"		156.0	170.0	170.0	164.2	170.0	170.0	170.0
51"		146.8	170.0	170.0	154.6	170.0	170.0	170.0
54"		148.6	170.0	170.0	146.0	170.0	170.0	170.0
57"		140.8	168.9	170.0	138.3	170.0	170.0	170.0
60"		133.7	169.4	170.0	143.3	170.0	170.0	170.0
63"		127.3	161.3	170.0	136.5	170.0	170.0	170.0
66"		129.7	154.0	170.0	130.3	170.0	170.0	170.0
69"		124.0	147.3	170.0	135.0	166.2	166.2	170.0
72"	118.9	148.6	170.0	129.4	159.2	159.2	170.0	
36"	90"	170.0	170.0	170.0	170.0	170.0	170.0	170.0
39"		166.4	170.0	170.0	170.0	170.0	170.0	170.0
42"		166.4	170.0	170.0	159.2	170.0	170.0	170.0
45"		155.3	170.0	170.0	148.6	170.0	170.0	170.0
48"		145.6	170.0	170.0	153.3	170.0	170.0	170.0
51"		137.0	170.0	170.0	144.3	170.0	170.0	170.0
54"		138.7	166.4	170.0	136.2	170.0	170.0	170.0
57"		131.4	157.6	170.0	129.1	170.0	170.0	170.0
60"		124.8	158.1	170.0	133.8	167.2	167.2	170.0
63"		118.9	150.6	170.0	127.4	159.2	159.2	170.0
66"		121.0	143.7	170.0	121.6	162.1	162.1	170.0
69"		115.8	137.5	166.4	126.0	155.1	155.1	170.0
72"	110.9	138.7	159.5	120.8	148.6	148.6	170.0	

ANCHOR LOAD CAPACITY - PSF EXT.(+) & INT.(-)								
NOMINAL DIMS.		ANCHORS TYPE 'A'			ANCHORS TYPE 'B'		ANCHORS TYPE 'C'	
WIDTH (W)	FRAME HEIGHT	A3	A4	A5	B2	B3	C2	C3
36"	96"	169.0	170.0	170.0	170.0	170.0	170.0	170.0
39"		156.0	170.0	170.0	160.8	170.0	170.0	170.0
42"		156.0	170.0	170.0	149.3	170.0	170.0	170.0
45"		145.6	170.0	170.0	139.3	170.0	170.0	170.0
48"		136.5	170.0	170.0	143.7	170.0	170.0	170.0
51"		128.5	165.2	170.0	135.2	170.0	170.0	170.0
54"		130.0	156.0	170.0	127.7	170.0	170.0	170.0
57"		123.2	147.8	170.0	121.0	165.0	165.0	170.0
60"		117.0	148.2	170.0	125.4	156.8	156.8	170.0
63"		111.4	141.1	163.4	119.4	149.3	149.3	170.0
66"		113.5	134.7	163.1	114.0	152.0	152.0	170.0
69"		108.5	128.9	156.0	118.1	145.4	145.4	166.6
72"	104.0	130.0	149.5	113.2	139.3	139.3	159.7	
36"	102"	159.1	170.0	170.0	163.9	170.0	170.0	170.0
39"		146.8	170.0	170.0	151.3	170.0	170.0	170.0
42"		146.8	170.0	170.0	140.5	170.0	170.0	170.0
45"		137.0	166.4	170.0	131.1	170.0	170.0	170.0
48"		128.5	165.2	170.0	135.2	170.0	170.0	170.0
51"		120.9	155.5	170.0	127.3	162.0	162.0	170.0
54"		122.4	146.8	170.0	120.2	163.9	163.9	170.0
57"		115.9	139.1	170.0	113.9	155.3	155.3	170.0
60"		110.1	139.5	161.5	118.0	147.5	147.5	169.1
63"		104.9	132.8	153.8	112.4	140.5	140.5	161.0
66"		106.8	126.8	153.5	107.3	143.1	143.1	163.9
69"		102.1	121.3	146.8	111.2	136.8	136.8	156.8
72"	97.9	122.4	140.7	106.5	131.1	131.1	150.3	

SEE SHEET 7 FOR LARGER HEIGHTS

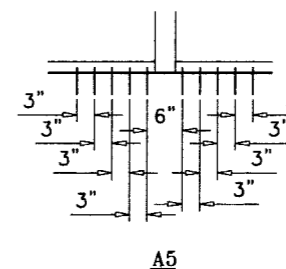
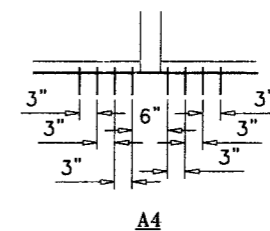
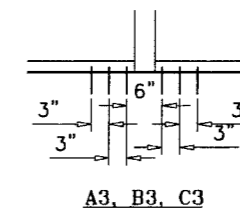
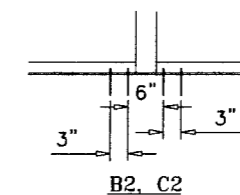
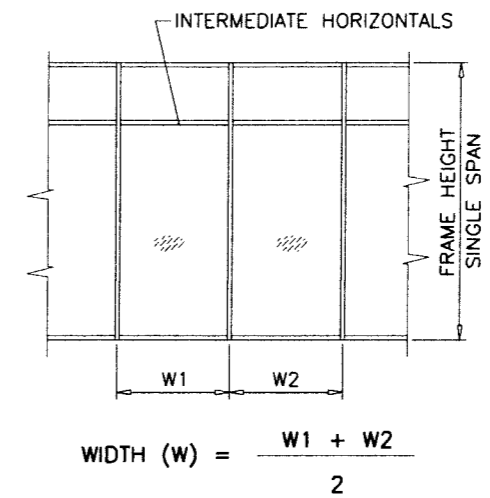
ANCHORS TYPES: SEE SHEET 7 FOR DESCRIPTION

A3 = (3) ANCHORS TYPE 'A' AT EACH SIDE OF MULLION
A4 = (4) ANCHORS TYPE 'A' AT EACH SIDE OF MULLION
A5 = (5) ANCHORS TYPE 'A' AT EACH SIDE OF MULLION

B2 = (2) ANCHORS TYPE 'B' AT EACH SIDE OF MULLION
B3 = (3) ANCHORS TYPE 'B' AT EACH SIDE OF MULLION

C2 = (2) ANCHORS TYPE 'C' AT EACH SIDE OF MULLION
C3 = (3) ANCHORS TYPE 'C' AT EACH SIDE OF MULLION

ALL OTHER ANCHORS TO BE SPACED AS PER ELEVATION.



Engr: JAVAD AHMAD
CIVIL
FLA. PE # 70592
C.A.N. 3538

10-D412.05
JUNE 26, 2013

MAR 18 2010

PRODUCT REVIEWED
as complying with the Florida
Building Code

10-D412.05
JUNE 26, 2013

MANUEL PEREZ
Product Control
Division

af c
AL-FAROOQ CORPORATION
ENGINEERS & PRODUCT DEVELOPMENT
1235 S.W. 87 AVE
MIAMI, FLORIDA 33174
TEL. (305) 264-8100 FAX. (305) 262-6978
STORE \W02 - 109CTC

PRO-TECH 7 ALUM CURTAIN WALL SYSTEM

CRAWFORD TRACEY CORPORATION
3301 SW 13TH DRIVE
DEERFIELD BEACH, FL. 33442-8101
TEL. (954) 698-6888 FAX. (954) 698-6889

no	date	description
B	01.23.07	UPDATED FOR 2004 FBC
C	02.12.10	NO CHANGE THIS SHEET

date: 06-11-02
scale: -
dr. by: HAMID
chk. by:

drawing no.
W02-109
sheet 6 of 15

ANCHOR LOAD CAPACITY - PSF EXT.(+) & INT.(-)								
NOMINAL DIMS.		ANCHORS TYPE 'A'			ANCHORS TYPE 'B'		ANCHORS TYPE 'C'	
WIDTH (W)	FRAME HEIGHT	A3	A4	A5	B2	B3	C2	C3
36"	108"	135.0	135.0	135.0	135.0	135.0	135.0	135.0
39"		135.0	135.0	135.0	135.0	135.0	135.0	135.0
42"		135.0	135.0	135.0	132.7	135.0	135.0	135.0
45"		129.4	135.0	135.0	123.9	135.0	135.0	135.0
48"		121.3	135.0	135.0	127.7	135.0	135.0	135.0
51"		114.2	135.0	135.0	120.2	135.0	135.0	135.0
54"		115.6	135.0	135.0	113.5	135.0	135.0	135.0
57"		109.5	131.4	135.0	107.6	135.0	135.0	135.0
60"		104.0	131.7	135.0	111.5	135.0	135.0	135.0
63"		99.0	125.5	135.0	106.2	135.0	135.0	135.0
66"		100.8	119.8	135.0	101.3	135.0	135.0	135.0
69"		96.5	114.6	135.0	105.0	129.2	129.2	135.0
72"	92.4	115.6	132.9	100.6	123.9	123.9	135.0	
36"	114"	135.0	135.0	135.0	135.0	135.0	135.0	135.0
39"		131.4	135.0	135.0	135.0	135.0	135.0	135.0
42"		131.4	135.0	135.0	125.7	135.0	135.0	135.0
45"		122.6	135.0	135.0	117.3	135.0	135.0	135.0
48"		114.9	135.0	135.0	121.0	135.0	135.0	135.0
51"		108.2	135.0	135.0	113.9	135.0	135.0	135.0
54"		109.5	131.4	135.0	107.6	135.0	135.0	135.0
57"		103.7	124.5	135.0	101.9	135.0	135.0	135.0
60"		98.5	124.8	135.0	105.6	132.0	132.0	135.0
63"		93.8	118.9	135.0	100.6	125.7	125.7	135.0
66"		95.5	113.5	135.0	96.0	128.0	128.0	135.0
69"		91.4	108.5	131.4	99.5	122.4	122.4	135.0
72"	87.6	109.5	125.9	95.3	117.3	117.3	134.5	
36"	120"	135.0	135.0	135.0	135.0	135.0	135.0	135.0
39"		124.8	135.0	135.0	128.6	135.0	135.0	135.0
42"		124.8	135.0	135.0	119.4	135.0	135.0	135.0
45"		116.5	135.0	135.0	111.5	135.0	135.0	135.0
48"		109.2	135.0	135.0	115.0	135.0	135.0	135.0
51"		102.8	132.1	135.0	108.2	135.0	135.0	135.0
54"		104.0	124.8	135.0	102.2	135.0	135.0	135.0
57"		98.5	118.2	135.0	96.8	132.0	132.0	135.0
60"		93.6	118.6	135.0	100.3	125.4	125.4	135.0
63"		89.1	112.9	130.7	95.5	119.4	119.4	135.0
66"		90.8	107.8	130.5	91.2	121.6	121.6	135.0
69"		86.8	103.1	124.8	94.5	116.3	116.3	133.3
72"	83.2	104.0	119.6	90.6	111.5	111.5	127.7	
36"	126"	128.8	135.0	135.0	132.7	135.0	135.0	135.0
39"		118.9	135.0	135.0	122.5	135.0	135.0	135.0
42"		118.9	135.0	135.0	113.7	135.0	135.0	135.0
45"		110.9	134.7	135.0	106.2	135.0	135.0	135.0
48"		104.0	133.7	135.0	109.5	135.0	135.0	135.0
51"		97.9	125.8	135.0	103.0	131.1	131.1	135.0
54"		99.0	118.9	135.0	97.3	132.7	132.7	135.0
57"		93.8	112.6	135.0	92.2	125.7	125.7	135.0
60"		89.1	112.9	130.7	95.5	119.4	119.4	135.0
63"		84.9	107.5	124.5	91.0	113.7	113.7	130.3
66"		86.4	102.6	124.3	86.9	115.8	115.8	132.7
69"		82.7	98.2	118.9	90.0	110.8	110.8	126.9
72"	79.2	99.0	113.9	86.3	106.2	106.2	121.7	

ANCHOR LOAD CAPACITY - PSF EXT.(+) & INT.(-)								
NOMINAL DIMS.		ANCHORS TYPE 'A'			ANCHORS TYPE 'B'		ANCHORS TYPE 'C'	
WIDTH (W)	FRAME HEIGHT	A3	A4	A5	B2	B3	C2	C3
36"	132"	122.9	135.0	135.0	126.7	135.0	135.0	135.0
39"		113.5	135.0	135.0	116.9	135.0	135.0	135.0
42"		113.5	135.0	135.0	108.6	135.0	135.0	135.0
45"		105.9	128.6	135.0	101.3	135.0	135.0	135.0
48"		99.3	127.6	135.0	104.5	133.0	133.0	135.0
51"		93.4	120.1	135.0	98.4	125.2	125.2	135.0
54"		94.5	113.5	135.0	92.9	126.7	126.7	135.0
57"		89.6	107.5	131.4	88.0	120.0	120.0	135.0
60"		85.1	107.8	124.8	91.2	114.0	114.0	130.6
63"		81.0	102.6	118.9	86.9	108.6	108.6	124.4
66"		82.5	98.0	118.6	82.9	110.5	110.5	126.7
69"		78.9	93.7	113.5	85.9	105.7	105.7	121.2
72"	75.6	94.5	108.7	82.3	101.3	101.3	116.1	
36"	138"	117.6	135.0	135.0	121.2	135.0	135.0	135.0
39"		108.5	135.0	135.0	111.8	135.0	135.0	135.0
42"		108.5	131.8	135.0	103.9	135.0	135.0	135.0
45"		101.3	123.0	135.0	96.9	135.0	135.0	135.0
48"		95.0	122.1	135.0	100.0	127.2	127.2	135.0
51"		89.4	114.9	134.1	94.1	119.7	119.7	135.0
54"		90.4	108.5	132.6	88.9	121.2	121.2	135.0
57"		85.7	102.8	125.7	84.2	114.8	114.8	131.5
60"		81.4	103.1	119.4	87.2	109.0	109.0	125.0
63"		77.5	98.2	113.7	83.1	103.9	103.9	119.0
66"		78.9	93.7	113.5	79.3	105.7	105.7	121.2
69"		75.5	89.6	108.5	82.2	101.1	101.1	115.9
72"	72.3	90.4	104.0	78.8	96.9	96.9	111.1	
36"	144"	112.7	135.0	135.0	116.1	135.0	135.0	135.0
39"		104.0	135.0	135.0	107.2	135.0	135.0	135.0
42"		104.0	126.3	135.0	99.5	135.0	135.0	135.0
45"		97.1	117.9	135.0	92.9	130.0	130.0	135.0
48"		91.0	117.0	135.0	95.8	121.9	121.9	135.0
51"		85.6	110.1	128.5	90.2	114.7	114.7	131.5
54"		86.7	104.0	127.1	85.1	116.1	116.1	133.1
57"		82.1	98.5	120.4	80.7	110.0	110.0	126.1
60"		78.0	98.8	114.4	83.6	104.5	104.5	119.8
63"		74.3	94.1	109.0	79.6	99.5	99.5	114.0
66"		75.6	89.8	108.7	76.0	101.3	101.3	116.1
69"		72.3	85.9	104.0	78.8	96.9	96.9	111.1
72"	69.3	86.7	99.7	75.5	92.9	92.9	106.4	
36"	150"	108.2	135.0	135.0	111.5	135.0	135.0	135.0
39"		99.8	130.6	135.0	102.9	133.8	133.8	135.0
42"		99.8	121.2	135.0	95.5	133.8	133.8	135.0
45"		93.2	113.2	135.0	89.2	124.8	124.8	135.0
48"		87.4	112.3	131.0	92.0	117.0	117.0	134.1
51"		82.2	105.7	123.3	86.6	110.2	110.2	126.2
54"		83.2	99.8	122.0	81.7	111.5	111.5	127.7
57"		78.8	94.6	115.6	77.4	105.6	105.6	121.0
60"		74.9	94.8	109.8	80.3	100.3	100.3	115.0
63"		71.3	90.3	104.6	76.4	95.5	95.5	109.5
66"		72.6	86.2	104.4	73.0	97.3	97.3	111.5
69"		69.5	82.5	99.8	75.6	93.1	93.1	106.6
72"	66.6	83.2	95.7	72.5	89.2	89.2	102.2	

ANCHOR LOAD CAPACITY - PSF EXT.(+) & INT.(-)								
NOMINAL DIMS.		ANCHORS TYPE 'A'			ANCHORS TYPE 'B'		ANCHORS TYPE 'C'	
WIDTH (W)	FRAME HEIGHT	A3	A4	A5	B2	B3	C2	C3
36"	156"	104.0	135.0	135.0	107.2	135.0	135.0	135.0
39"		96.0	125.5	135.0	98.9	128.6	128.6	135.0
42"		96.0	116.6	135.0	91.9	128.6	128.6	135.0
45"		89.6	108.8	134.4	85.7	120.0	120.0	135.0
48"		84.0	108.0	126.0	88.4	112.5	112.5	129.0
51"		79.1	101.6	118.6	83.2	105.9	105.9	121.4
54"		80.0	96.0	117.3	78.6	107.2	107.2	122.8
57"		75.8	90.9	111.2	74.5	101.5	101.5	116.4
60"		72.0	91.2	105.6	77.2	96.5	96.5	110.5
63"		68.6	86.9	100.6	73.5	91.9	91.9	105.3
66"		69.8	82.9	100.4	70.2	93.5	93.5	107.2
69"		66.8	79.3	96.0	72.7	89.5	89.5	102.5
36"	162"	100.1	131.0	135.0	103.2	134.2	134.2	135.0
39"		92.4	120.9	135.0	95.3	123.9	123.9	135.0
42"		92.4	112.3	135.0	88.5	123.9	123.9	135.0
45"		86.3	104.8	129.4	82.6	115.6	115.6	132.5
48"		80.9	104.0	121.3	85.1	108.4	108.4	124.2
51"		76.1	97.9	114.2	80.1	102.0	102.0	116.9
54"		77.0	92.4	113.0	75.7	103.2	103.2	118.3
57"		73.0	87.6	107.0	71.7	97.8	97.8	112.0
60"		69.3	87.8	101.7	74.3	92.9	92.9	106.4
63"		66.0	83.6	96.8	70.8	88.5	88.5	101.4
66"		67.2	79.8	96.6	67.6	90.1	90.1	103.2
36"		168"	96.6	126.3	135.0	99.5	129.4	129.4
39"	89.1		116.6	135.0	91.9	119.4	119.4	135.0
42"	89.1		108.2	133.7	85.3	119.4	119.4	135.0
45"	83.2		101.0	124.8	79.6	111.5	111.5	127.7
48"	78.0		100.3	117.0	82.1	104.5	104.5	119.8
51"	73.4		94.4	110.1	77.3	98.4	98.4	112.7
54"	74.3		89.1	109.0	73.0	99.5	99.5	114.0
57"	70.4		84.5	103.2	69.1	94.3	94.3	108.0
60"	66.9		84.7	98.1	71.7	89.6	89.6	102.6
63"	63.7		80.7	93.4	68.2	85.3	85.3	97.8

Engr: JAVAD AHMAD
CIVIL
FLA. PE # 70592
C.A.N. 3538

J.A.

MAR 18 2010

PRODUCT REVISED
or complying with the Florida
Building Code
Approval No. 10-0412-05
Expiration Date June 26, 2013

Manuel Perez
Product Control
Division

afC

AL-FAROOQ CORPORATION
ENGINEERS & PRODUCT DEVELOPMENT
1235 S.W. 87 AVE
MIAMI, FLORIDA 33174
TEL. (305) 264-8100 FAX. (305) 262-6978

STORE \ W02-109CTC

PRO-TECH 7 ALUM CURTAIN WALL SYSTEM

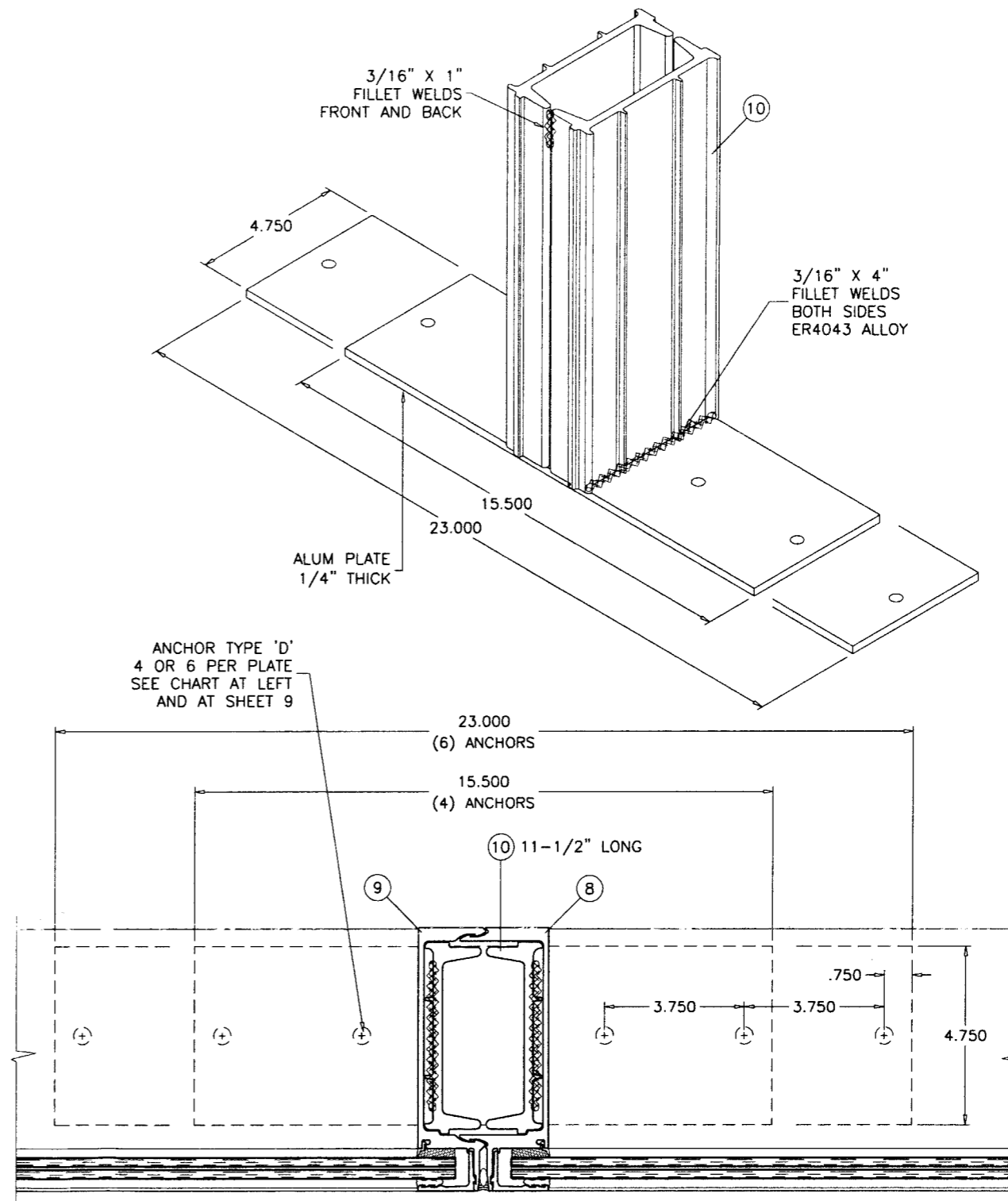
CRAWFORD TRACEY CORPORATION
3301 SW 13TH DRIVE
DEERFIELD BEACH, FL. 33442-8101
TEL. (954) 698-6888 FAX. (954) 698-6889

revisions:

no	date	description
B	01.23.07	UPDATED FOR 2004 FBC

ANCHOR LOAD CAPACITY - PSF EXT.(+) & INT.(-)					
NOMINAL DIMS.		4 ANCHORS PER PLATE TYPE 'D'		6 ANCHORS PER PLATE TYPE 'D'	
WIDTH (W)	FRAME HEIGHT	3-1/4" EDGE DIST.	4" EDGE DIST.	3-1/4" EDGE DIST.	4" EDGE DIST.
36"	72"	170.0	170.0	170.0	170.0
39"		170.0	170.0	170.0	170.0
42"		170.0	170.0	170.0	170.0
45"		170.0	170.0	170.0	170.0
48"		170.0	170.0	170.0	170.0
51"		170.0	170.0	170.0	170.0
54"		170.0	170.0	170.0	170.0
57"		170.0	170.0	170.0	170.0
60"		170.0	170.0	170.0	170.0
63"		164.3	170.0	170.0	170.0
36"	78"	170.0	170.0	170.0	170.0
39"		170.0	170.0	170.0	170.0
42"		170.0	170.0	170.0	170.0
45"		170.0	170.0	170.0	170.0
48"		170.0	170.0	170.0	170.0
51"		170.0	170.0	170.0	170.0
54"		170.0	170.0	170.0	170.0
57"		167.6	170.0	170.0	170.0
36"	84"	170.0	170.0	170.0	170.0
39"		170.0	170.0	170.0	170.0
42"		170.0	170.0	170.0	170.0
45"		170.0	170.0	170.0	170.0
48"		170.0	170.0	170.0	170.0
51"		164.3	170.0	170.0	170.0
36"	90"	170.0	170.0	170.0	170.0
39"		170.0	170.0	170.0	170.0
42"		170.0	170.0	170.0	170.0
45"		170.0	170.0	170.0	170.0
48"		162.4	170.0	170.0	170.0
36"	96"	170.0	170.0	170.0	170.0
39"		170.0	170.0	170.0	170.0
42"		170.0	170.0	170.0	170.0
45"		161.8	170.0	170.0	170.0
36"	102"	170.0	170.0	170.0	170.0
39"		170.0	170.0	170.0	170.0
42"		162.4	170.0	170.0	170.0
36"	106"	170.0	170.0	170.0	170.0
39"		170.0	170.0	170.0	170.0
42"		167.4	170.0	170.0	170.0
44"	159.8	170.0	170.0	170.0	170.0

SEE SHEET 9 FOR LARGER HEIGHTS



ANCHOR TYPE 'D'
4 OR 6 PER PLATE
SEE CHART AT LEFT
AND AT SHEET 9

TYPICAL ANCHORS:

TYPE 'D' - 3/8" DIA. POWERS WEDGE-BOLT ANCHOR
DIRECTLY INTO CONCRETE
1-1/2" MIN. EMBED INTO CONC. (3000 PSI MIN.)
EDGE DIST. (SEE CHARTS)

Engr: JAVAD AHMAD
CIVIL
FLA. PE # 70592
C.A.N. 3538

JA
MAR 18 2010

PRODUCT REVISED
in accordance with the Florida
Building Code
As of: 10-04-05
Revision Date: June 26, 2013

dr. by: HAMID
chk. by:

afC
AL-FAROOQ CORPORATION
ENGINEERS & PRODUCT DEVELOPMENT
12335 S.W. 87 AVE
MIAMI, FLORIDA 33174
TEL. (305) 264-8100 FAX. (305) 262-6978
STORE/WO2-109CTC

PRO-TECH 7 ALUM CURTAIN WALL SYSTEM
CRAWFORD TRACEY CORPORATION
3301 SW 13TH DRIVE
DEERFIELD BEACH, FL. 33442-8101
TEL. (954) 698-6888 FAX. (954) 698-6889

no	date	description
B	01.23.07	UPDATED FOR 2004 FBC
C	02.12.10	UPDATED FOR 2007 FBC

date: 06-11-02
scale: 1/4" = 1"
drawing no. **W02-109**
sheet 8 of 15

ANCHOR LOAD CAPACITY - PSF EXT.(+) & INT.(-)					
NOMINAL DIMS.		4 ANCHORS PER PLATE TYPE 'D'		6 ANCHORS PER PLATE TYPE 'D'	
WIDTH (W)	FRAME HEIGHT	3-1/4" EDGE DIST.	4" EDGE DIST.	3-1/4" EDGE DIST.	4" EDGE DIST.
36"	102"	135.0	135.0	135.0	135.0
39"		135.0	135.0	135.0	135.0
42"		135.0	135.0	135.0	135.0
45"		135.0	135.0	135.0	135.0
48"		135.0	135.0	135.0	135.0
51"		135.0	135.0	135.0	135.0
54"		135.0	135.0	135.0	135.0
57"		128.2	135.0	135.0	135.0
60"		121.8	135.0	135.0	135.0
63"		116.0	135.0	135.0	135.0
66"		110.7	135.0	135.0	135.0
69"		105.9	135.0	135.0	135.0
72"		101.5	129.7	135.0	135.0
36"		108"	135.0	135.0	135.0
39"	135.0		135.0	135.0	135.0
42"	135.0		135.0	135.0	135.0
45"	135.0		135.0	135.0	135.0
48"	135.0		135.0	135.0	135.0
51"	135.0		135.0	135.0	135.0
54"	127.8		135.0	135.0	135.0
57"	121.1		135.0	135.0	135.0
60"	115.0		135.0	135.0	135.0
63"	109.5		135.0	135.0	135.0
66"	104.6		133.7	135.0	135.0
69"	100.0		127.8	135.0	135.0
72"	95.9		122.5	135.0	135.0
36"	114"		135.0	135.0	135.0
39"		135.0	135.0	135.0	135.0
42"		135.0	135.0	135.0	135.0
45"		135.0	135.0	135.0	135.0
48"		135.0	135.0	135.0	135.0
51"		128.2	135.0	135.0	135.0
54"		121.1	135.0	135.0	135.0
57"		114.7	135.0	135.0	135.0
60"		109.0	135.0	135.0	135.0
63"		103.8	132.7	135.0	135.0
66"		99.1	126.6	135.0	135.0
69"		94.8	121.1	135.0	135.0
72"		90.8	116.1	135.0	135.0
36"		120"	135.0	135.0	135.0
39"	135.0		135.0	135.0	135.0
42"	135.0		135.0	135.0	135.0
45"	135.0		135.0	135.0	135.0
48"	129.4		135.0	135.0	135.0
51"	121.8		135.0	135.0	135.0
54"	115.0		135.0	135.0	135.0
57"	109.0		135.0	135.0	135.0
60"	103.5		132.3	135.0	135.0
63"	98.6		126.0	135.0	135.0
66"	94.1		120.3	135.0	135.0
69"	90.0		115.1	135.0	135.0
72"	86.3		110.3	129.4	135.0

ANCHOR LOAD CAPACITY - PSF EXT.(+) & INT.(-)					
NOMINAL DIMS.		4 ANCHORS PER PLATE TYPE 'D'		6 ANCHORS PER PLATE TYPE 'D'	
WIDTH (W)	FRAME HEIGHT	3-1/4" EDGE DIST.	4" EDGE DIST.	3-1/4" EDGE DIST.	4" EDGE DIST.
36"	126"	135.0	135.0	135.0	135.0
39"		135.0	135.0	135.0	135.0
42"		135.0	135.0	135.0	135.0
45"		131.5	135.0	135.0	135.0
48"		123.2	135.0	135.0	135.0
51"		116.0	135.0	135.0	135.0
54"		109.5	135.0	135.0	135.0
57"		103.8	132.7	135.0	135.0
60"		98.6	126.0	135.0	135.0
63"		93.9	120.0	135.0	135.0
66"		89.6	114.6	134.4	135.0
69"		85.7	109.6	128.6	135.0
72"		82.2	105.0	123.2	135.0
36"		132"	135.0	135.0	135.0
39"	135.0		135.0	135.0	135.0
42"	134.4		135.0	135.0	135.0
45"	125.5		135.0	135.0	135.0
48"	117.6		135.0	135.0	135.0
51"	110.7		135.0	135.0	135.0
54"	104.6		133.7	135.0	135.0
57"	99.1		126.6	135.0	135.0
60"	94.1		120.3	135.0	135.0
63"	89.6		114.6	134.4	135.0
66"	85.6		109.4	128.3	135.0
69"	81.8		104.6	122.8	135.0
72"	78.4		100.2	117.6	135.0
36"	138"		135.0	135.0	135.0
39"		135.0	135.0	135.0	135.0
42"		128.6	135.0	135.0	135.0
45"		120.0	135.0	135.0	135.0
48"		112.5	135.0	135.0	135.0
51"		105.9	135.0	135.0	135.0
54"		100.0	127.8	135.0	135.0
57"		94.8	121.1	135.0	135.0
60"		90.0	115.1	135.0	135.0
63"		85.7	109.6	128.6	135.0
66"		81.8	104.6	122.8	135.0
69"		78.3	100.1	117.4	135.0
72"		75.0	95.9	112.5	135.0
36"		144"	135.0	135.0	135.0
39"	132.7		135.0	135.0	135.0
42"	123.2		135.0	135.0	135.0
45"	115.0		135.0	135.0	135.0
48"	107.8		135.0	135.0	135.0
51"	101.5		129.7	135.0	135.0
54"	95.9		122.5	135.0	135.0
57"	90.0		116.1	135.0	135.0
60"	86.3		110.3	129.4	135.0
63"	82.2		105.0	123.2	135.0
66"	78.4		100.2	117.6	135.0
69"	75.0		95.9	112.5	135.0

ANCHOR LOAD CAPACITY - PSF EXT.(+) & INT.(-)						
NOMINAL DIMS.		4 ANCHORS PER PLATE TYPE 'D'		6 ANCHORS PER PLATE TYPE 'D'		
WIDTH (W)	FRAME HEIGHT	3-1/4" EDGE DIST.	4" EDGE DIST.	3-1/4" EDGE DIST.	4" EDGE DIST.	
36"	150"	135.0	135.0	135.0	135.0	
39"		127.4	135.0	135.0	135.0	
42"		118.3	135.0	135.0	135.0	
45"		110.4	135.0	135.0	135.0	
48"		103.5	132.3	135.0	135.0	
51"		97.4	124.5	135.0	135.0	
54"		92.0	117.6	135.0	135.0	
57"		87.2	111.4	130.8	135.0	
60"		82.8	105.9	124.2	135.0	
63"		78.9	100.8	118.3	135.0	
66"		75.3	96.2	112.9	135.0	
36"		156"	132.7	135.0	135.0	135.0
39"			122.5	135.0	135.0	135.0
42"			113.8	135.0	135.0	135.0
45"	106.2		135.0	135.0	135.0	
48"	99.5		127.2	135.0	135.0	
51"	93.7		119.7	135.0	135.0	
54"	88.5		113.1	132.7	135.0	
57"	83.8		107.1	125.7	135.0	
60"	79.6		101.8	119.4	135.0	
63"	75.8		96.9	113.8	135.0	
36"	162"		127.8	135.0	135.0	135.0
39"			118.0	135.0	135.0	135.0
42"			109.5	135.0	135.0	135.0
45"			102.2	130.7	135.0	135.0
48"		95.9	122.5	135.0	135.0	
51"		90.2	115.3	135.0	135.0	
54"		85.2	108.9	127.8	135.0	
57"		80.7	103.2	121.1	135.0	
60"		76.7	98.0	115.0	135.0	
36"		168"	123.2	135.0	135.0	135.0
39"			113.8	135.0	135.0	135.0
42"			105.6	135.0	135.0	135.0
45"			98.6	126.0	135.0	135.0
48"			92.4	118.1	135.0	135.0
51"	87.0		111.2	130.5	135.0	
54"	82.2		105.0	123.2	135.0	
57"	77.8		99.5	116.8	135.0	
60"	73.9		94.5	110.9	135.0	

Engr: JAVAD AHMAD
CIVIL
FLA. PE # 70592
C.A.N. 3538

JA
MAR 18 2010

10-DA12-05
JUNE 26, 2013

Manuel Perez
Product Control

af c
AL-FAROOQ CORPORATION
ENGINEERS & PRODUCT DEVELOPMENT
1235 S.W. 87 AVE
MIAMI, FLORIDA 33174
TEL. (305) 264-8100 FAX. (305) 262-6978
STORE/WO2-109CTC

PRO-TECH 7 ALUM CURTAIN WALL SYSTEM
CRAWFORD TRACEY CORPORATION
3301 SW 13TH DRIVE
DEERFIELD BEACH, FL. 33442-8101
TEL. (954) 698-6888 FAX. (954) 698-6889

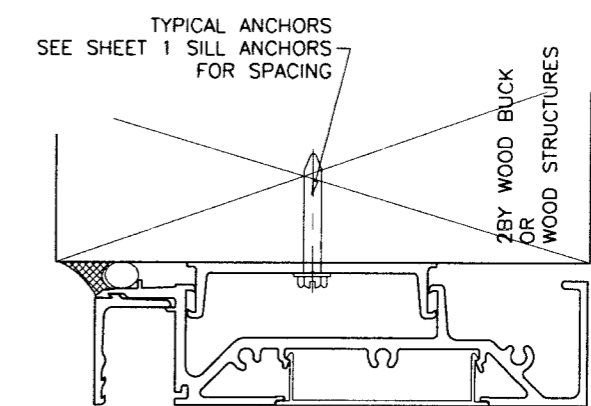
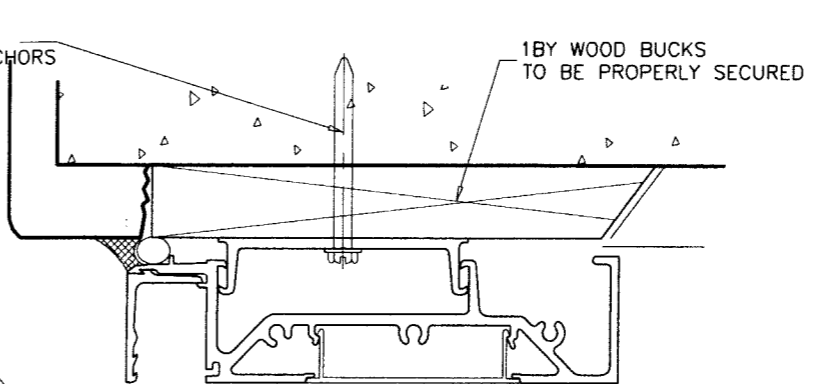
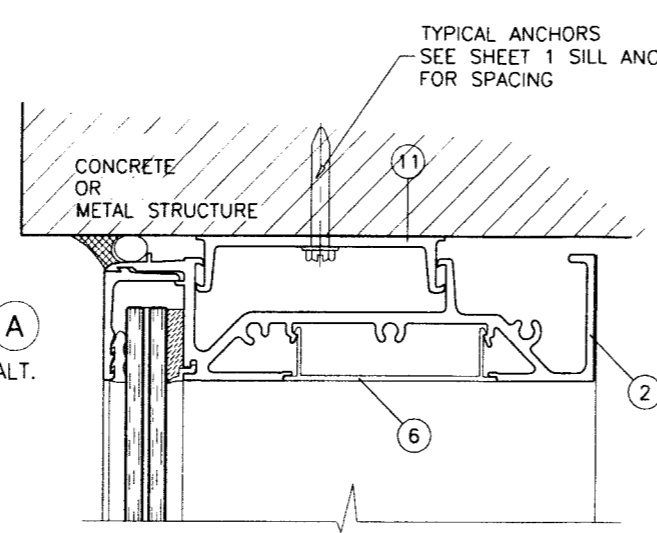
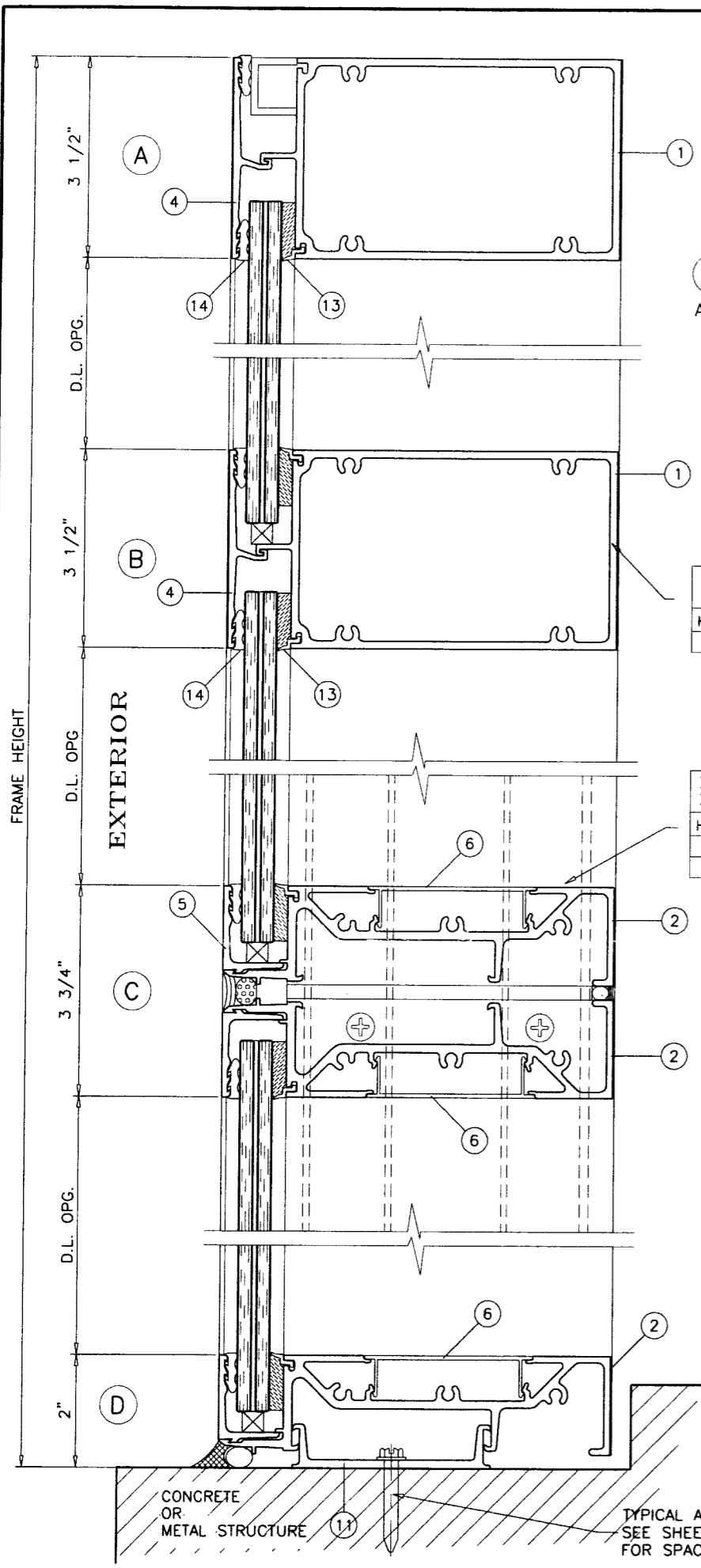
revisions:

no	date	description
B	01.23.07	UPDATED FOR 2004 FBC
C	02.12.10	UPDATED FOR 2007 FBC

date: 06-11-02
scale: 1/4" = 1"
dr. by: HAMID
chk. by:

drawing no.
W02-109

sheet 9 of 15



LIMIT MAX. DESIGN LOADS FOR THIS HORIZONTAL AS FOLLOWS

HORIZ. SPAN MAX.	LAM. GLASS
72"	170 SF

LIMIT MAX. DESIGN LOADS FOR THIS HORIZONTAL AS FOLLOWS

HORIZ. SPAN MAX.	LAM. GLASS
66"	120 PSF
72"	100 PSF

TYPICAL ANCHORS: SEE ELEV. FOR SPACING AT HEAD, SILL AND JAMBS

- TYPE 'A'- **5/16" DIA. ULTRACON BY 'ELCO'** (Fu=177 KSI, Fy=155 KSI) INTO 2BY WOOD BUCKS OR WOOD STRUCTURES 1-3/8" MIN. PENETRATION INTO WOOD THRU 1BY BUCKS INTO CONC. OR MASONRY 1-1/4" MIN. EMBED INTO CONC. OR MASONRY
- TYPE 'B'- **1/4" DIA. ULTRACON BY 'ELCO'** (Fu=177 KSI, Fy=155 KSI) DIRECTLY INTO CONC. OR MASONRY 1-5/8" MIN. EMBED INTO CONC. OR MASONRY
- TYPE 'C'- **#14 SMS OR SELF DRILLING SCREWS** (GRADE 2 CRS) INTO METAL STRUCTURES
STEEL : 12 GA. MIN. (Fy = 36 KSI MIN.)
ALUMINUM : 1/8" THK. MIN. (6063-T5 MIN.)
(STEEL IN CONTACT WITH ALUMINUM TO BE PLATED OR PAINTED)

TYPICAL EDGE DISTANCE

- INTO CONCRETE AND MASONRY = 2-1/2" MIN.
- INTO WOOD STRUCTURE = 1" MIN.
- INTO METAL STRUCTURE = 3/4" MIN.

CONCRETE AT HEAD, SILL OR JAMBS f'c = 3000 PSI MIN.
C-90 HOLLOW/FILLED BLOCK AT JAMBS f'm = 2000 PSI MIN.

TYPE 'D'- SEE SHEET 8

WOOD BUCKS AND METAL STRUCTURES NOT BY CRAWFORD TRACEY MUST SUPPORT LOADS IMPOSED BY GLAZING SYSTEM AND TRANSFER THEM TO THE BUILDING STRUCTURE.

Engr: JAVAD AHMAD
CIVIL
FLA. PE # 70592
C.A.N. 3538
MAR 18 2010

PRODUCT REVISED
as complying with the Florida
Building Code
10-0412.05
Application Date June 26, 2013
By: *Manuel Perez*
Division

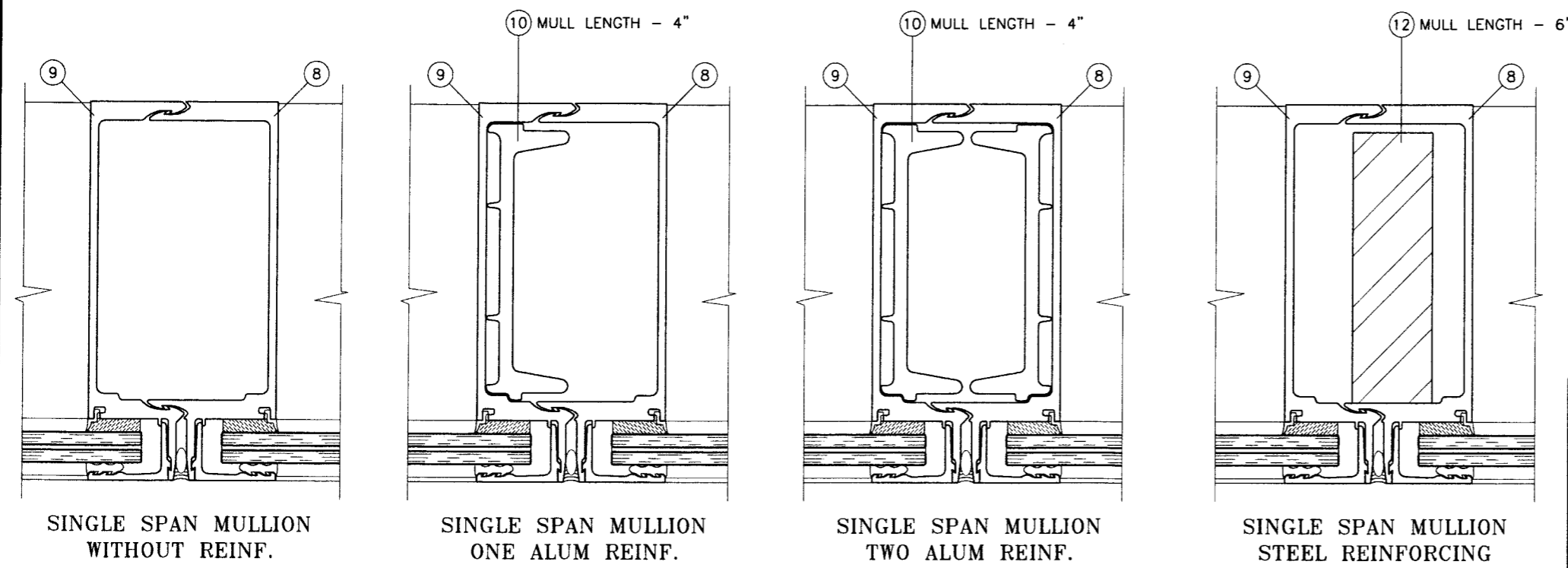
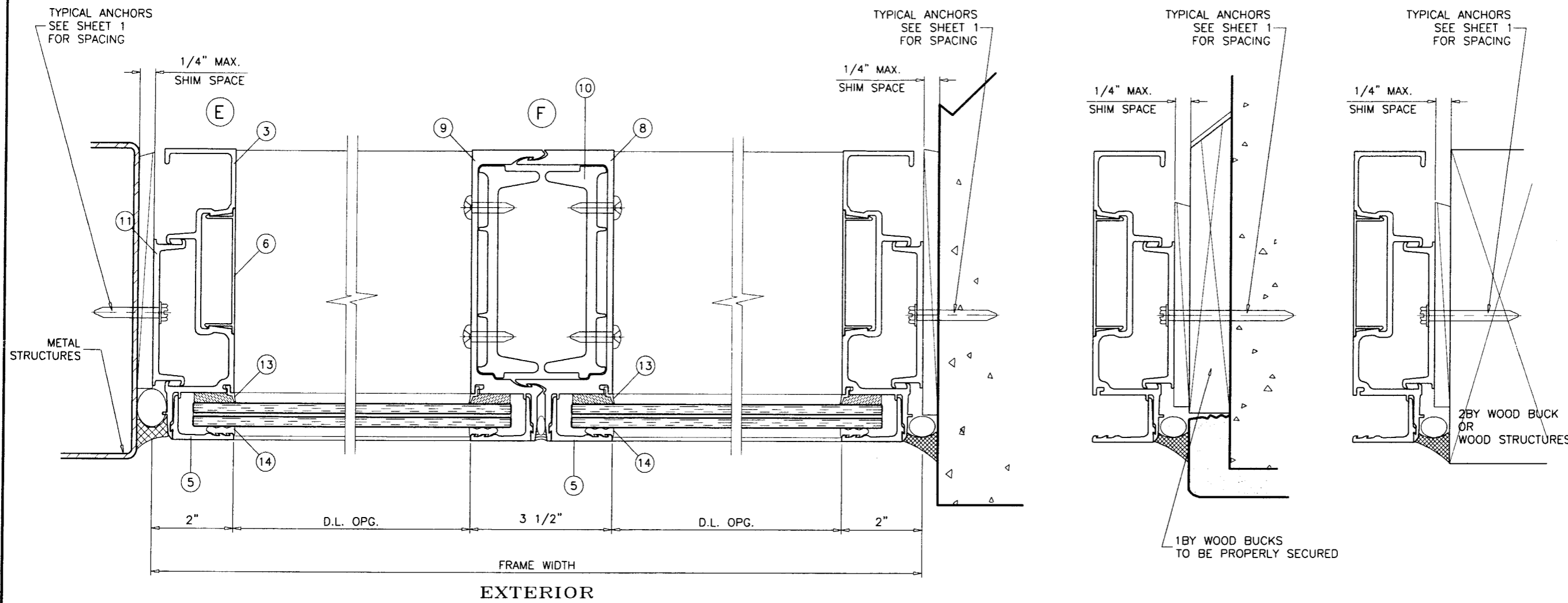
af c
AL-FAROOQ CORPORATION
ENGINEERS & PRODUCT DEVELOPMENT
1235 S.W. 87 AVE
MIAMI, FLORIDA 33174
TEL. (305) 264-8100 FAX. (305) 262-6978
STORE \W02-109CTC

PRO-TECH 7 ALUM CURTAIN WALL SYSTEM
CRAWFORD TRACEY CORPORATION
3301 SW 13TH DRIVE
DEERFIELD BEACH, FL. 33442-8101
TEL. (954) 698-6888 FAX. (954) 698-6889

revisions:

no	date	by	description
A	5.27.03		NO CHANGE THIS SHEET
B	01.23.07		UPDATED FOR 2004 FBC
C	02.12.10		UPDATED FOR 2007 FBC

date: 06-11-02
scale: 3/8" = 1"
dr. by: HAMID
chk. by:
drawing no. **W02-109**
sheet 10 of 15



Engr: JAVAD AHMAD
 CIVIL
 FLA. PE # 70592
 C.A.N. 3538
 MAR 18 2010

PRODUCT REVISED
 as complying with the Florida
 Building Code
 Approval Date: 10-0412.05
 Signature Date: June 26, 2013
Manuel Paez

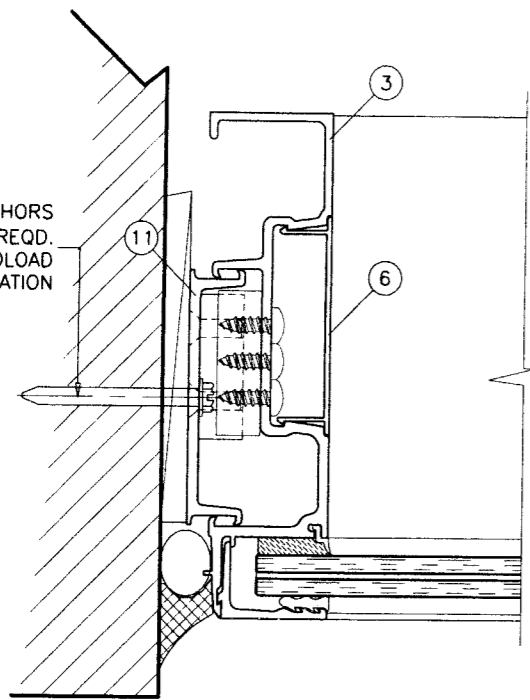
af c
AL-FAROOQ CORPORATION
 ENGINEERS & PRODUCT DEVELOPMENT
 1235 S.W. 87 AVE
 MIAMI, FLORIDA 33174
 TEL. (305) 264-8100 FAX. (305) 262-6978
 STORE/W02-109CTC

PRO-TECH 7 ALUM CURTAIN WALL SYSTEM
CRAWFORD TRACEY CORPORATION
 3301 SW 13TH DRIVE
 DEERFIELD BEACH, FL. 33442-8101
 TEL. (954) 698-6888 FAX. (954) 698-6889

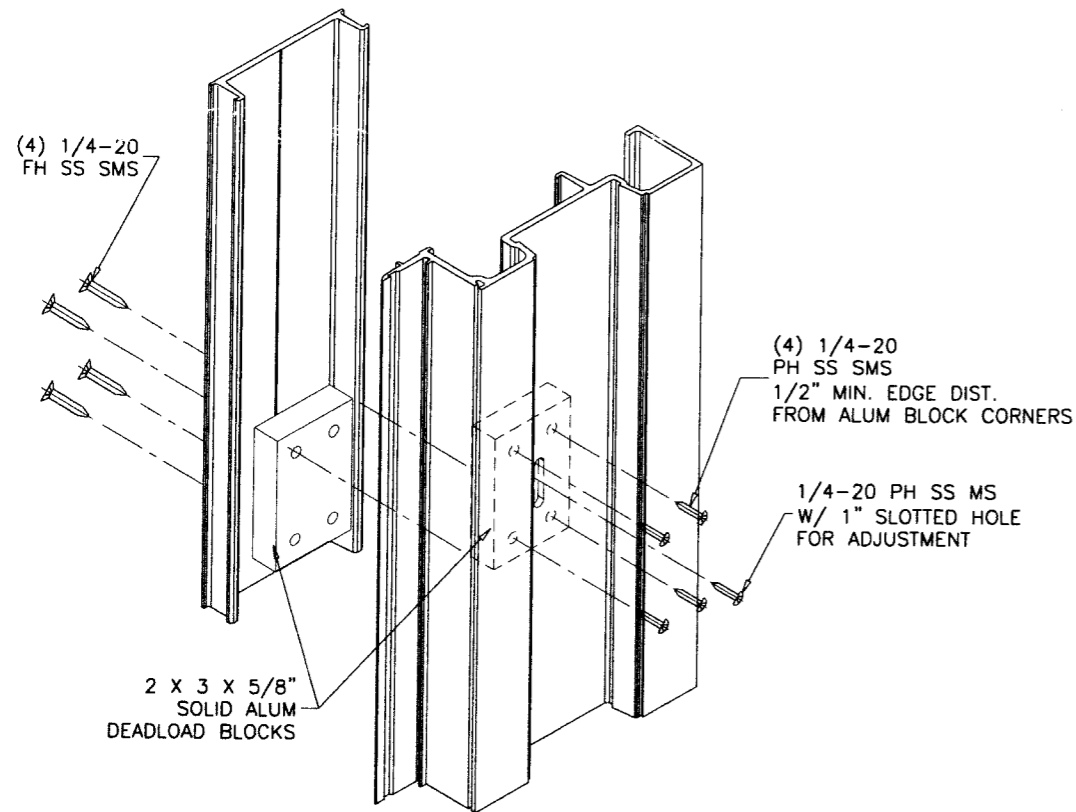
no.	date	description
A	5.27.03	NO CHANGE THIS SHEET
B	01.23.07	UPDATED FOR 2004 FBC
C	02.12.10	NO CHANGE THIS SHEET

date: 06-11-02
 scale: 3/8" = 1"
 dr. by: HAMID
 ch. by:
 drawing no.
W02-109
 sheet 11 of 15

TYPICAL ANCHORS
(3) ADDL. REQD.
AT DEADLOAD
BLOCK LOCATION



ITEM NO.	PART NO.	QUANTITY	DESCRIPTION	MATERIAL	MANF./SUPPLIER/REMARKS
1	170H340	AS REQD.	FRAME HORIZONTAL	6063-T6	-
2	170P175	AS REQD.	FRAME SILL	6063-T6	-
3	170J175	AS REQD.	FRAME JAMB	6063-T6	-
4	162F340	AS REQD.	GLAZING ADAPTER	6063-T6	-
5	162F111	AS REQD.	GLAZING ADAPTER	6063-T6	-
6	T30U119	AS REQD.	SNAP IN COVER	6063-T6	-
7	170J175	AS REQD.	FRAME JAMB	-	-
8	170M111	AS REQD.	MALE MULLION	6005-T5	-
9	170M112	AS REQD.	FEMALE MULLION	6005-T5	-
10	170R140	AS REQD.	SPLICE/MULLION REINF./ANCHOR REINF.	6063-T6	-
11	B32B070	AS REQD.	SUB-BUCK	6105-T5	-
12	-	AS REQD.	STEEL REINFORCING	-	-
13	#2	AS REQD.	GLAZING SPACER	POLYPROPYLENE	-
14	#5	AS REQD.	EXTERIOR GASKET	VINYL	-
15	1/4"X1-1/4"	AS REQD.	FRAME ASSEMBLY SCREWS	ST. STEEL	PAN HEAD PHILLIPS
16	-	-	-	-	-



DEADLOAD BLOCKS DETAIL
TYPICAL JAMBS

Engr: JAVAD AHMAD
CIVIL
FLA. PE # 70592
C.A.N. 3538

MAR 18 2010

J.A.

date: 06-11-02
scale: 3/8" = 1"
dr. by: HAMID
chk. by:

10-0412.05
June 26, 2013

Manuel Perez

AL-FAROOQ CORPORATION
ENGINEERS & PRODUCT DEVELOPMENT
12335 S.W. 87 AVE
MIAMI, FLORIDA 33174
TEL. (305) 264-8100 FAX. (305) 262-6978

STORE \ W02 - 109CTC

PRO-TECH 7 ALUM CURTAIN WALL SYSTEM

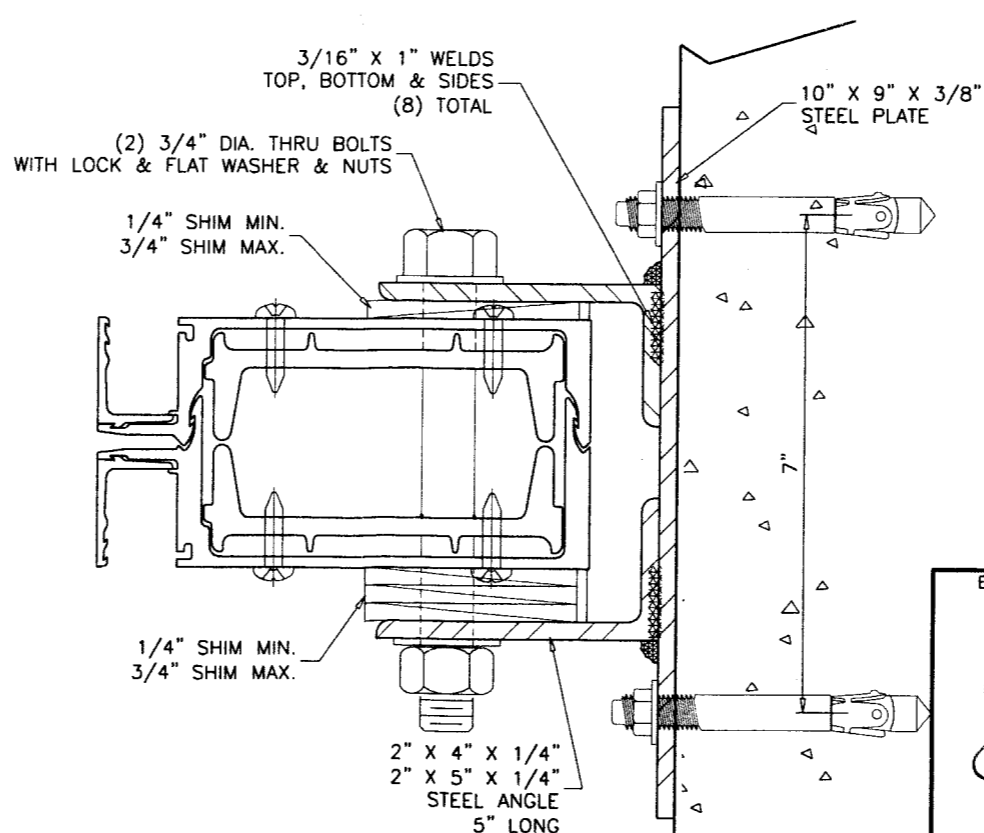
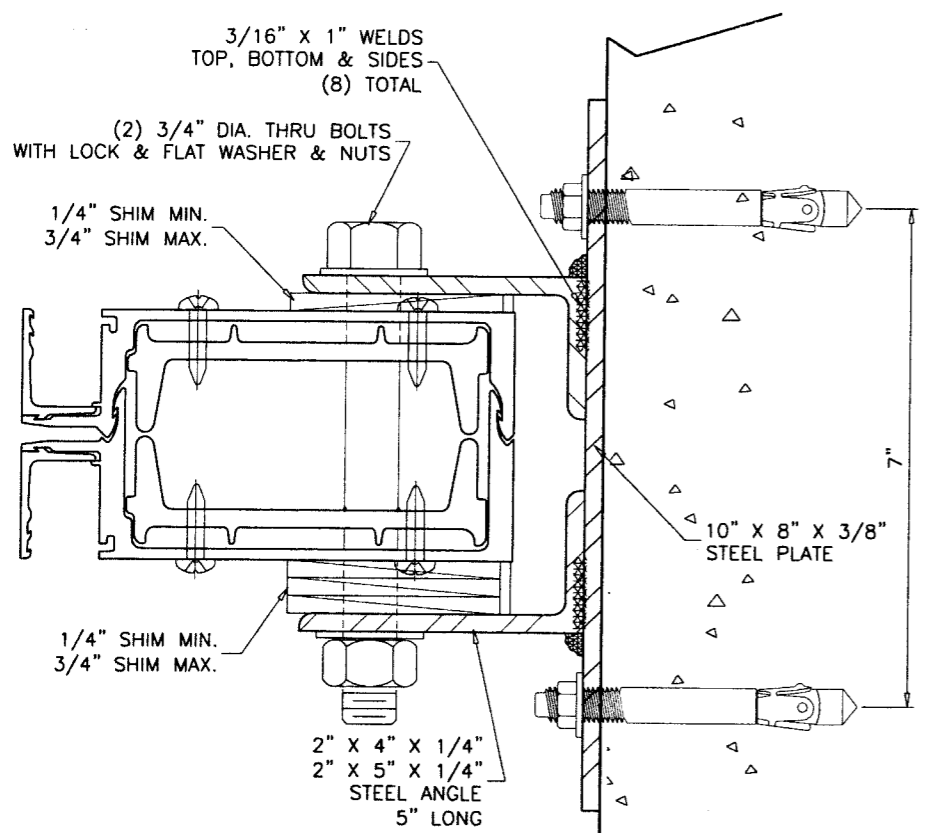
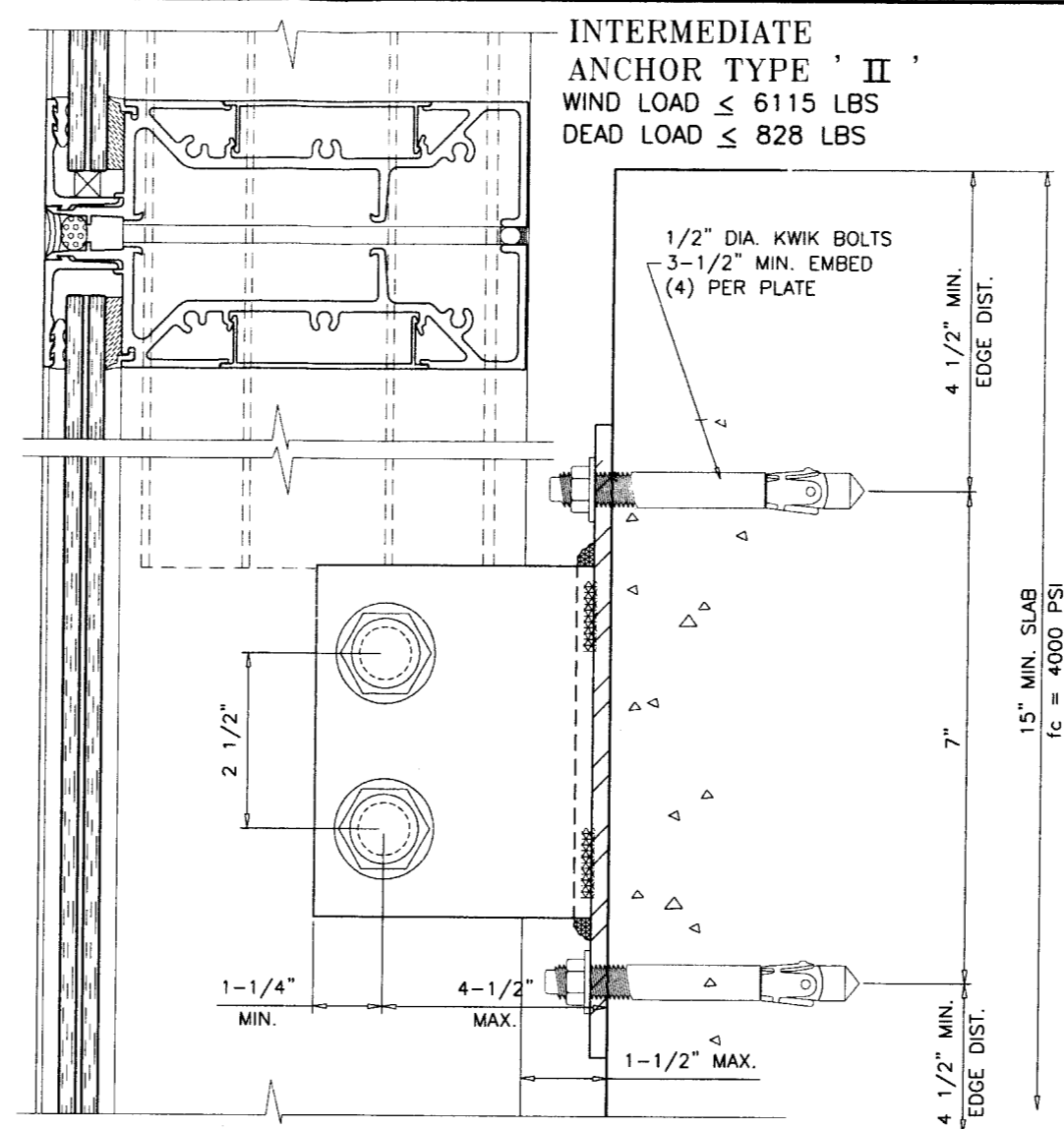
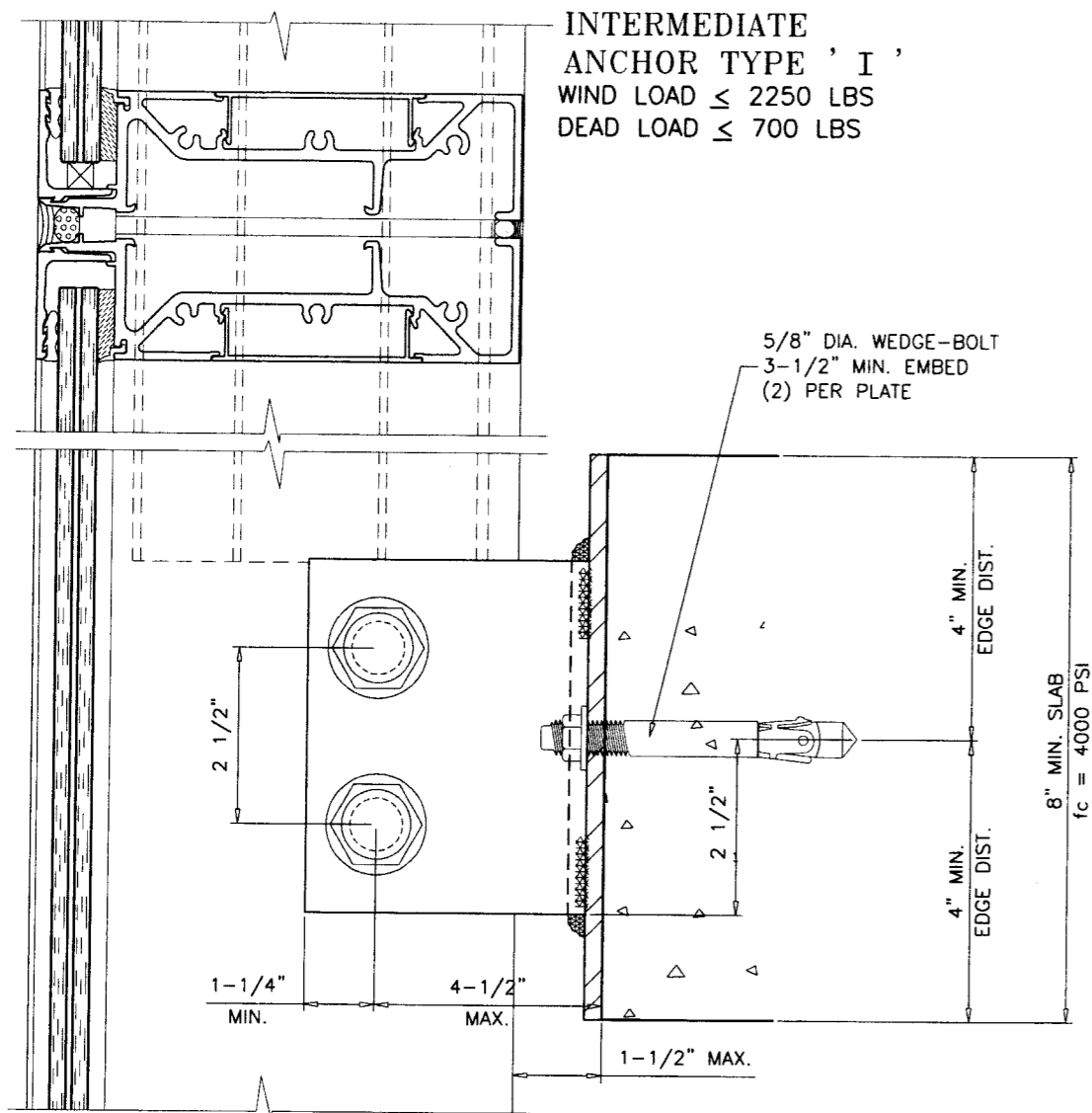
CRAWFORD TRACEY CORPORATION
3301 SW 13TH DRIVE
DEERFIELD BEACH, FL. 33442-8101
TEL. (954) 698-6888 FAX. (954) 698-6889

revisions:	no	date	by	description
	B	01.23.07		UPDATED FOR 2004 FBC
	C	02.12.10		NO CHANGE THIS SHEET

date: 06-11-02
scale: 3/8" = 1"
dr. by: HAMID
chk. by:

drawing no.
W02-109

sheet 12 of 15



MIN. CONC. $f_c' = 4000$ PSI

Engr: JAVAD AHMAD
 CIVIL
 FLA. PE # 70592
 C.A.N. 3538
 MAR 18 2010

PRODUCT REVIEWED
 as complying with the Florida
 Building Code
 Acceptance No. 10-0412.05
 Expiration Date June 10, 2013

J. Ahmad

a f c
AL-FAROOQ CORPORATION
 ENGINEERS & PRODUCT DEVELOPMENT
 1235 S.W. 87 AVE
 MIAMI, FLORIDA 33174
 TEL. (305) 264-8100 FAX. (305) 262-6978
 STORE W02-109CTC

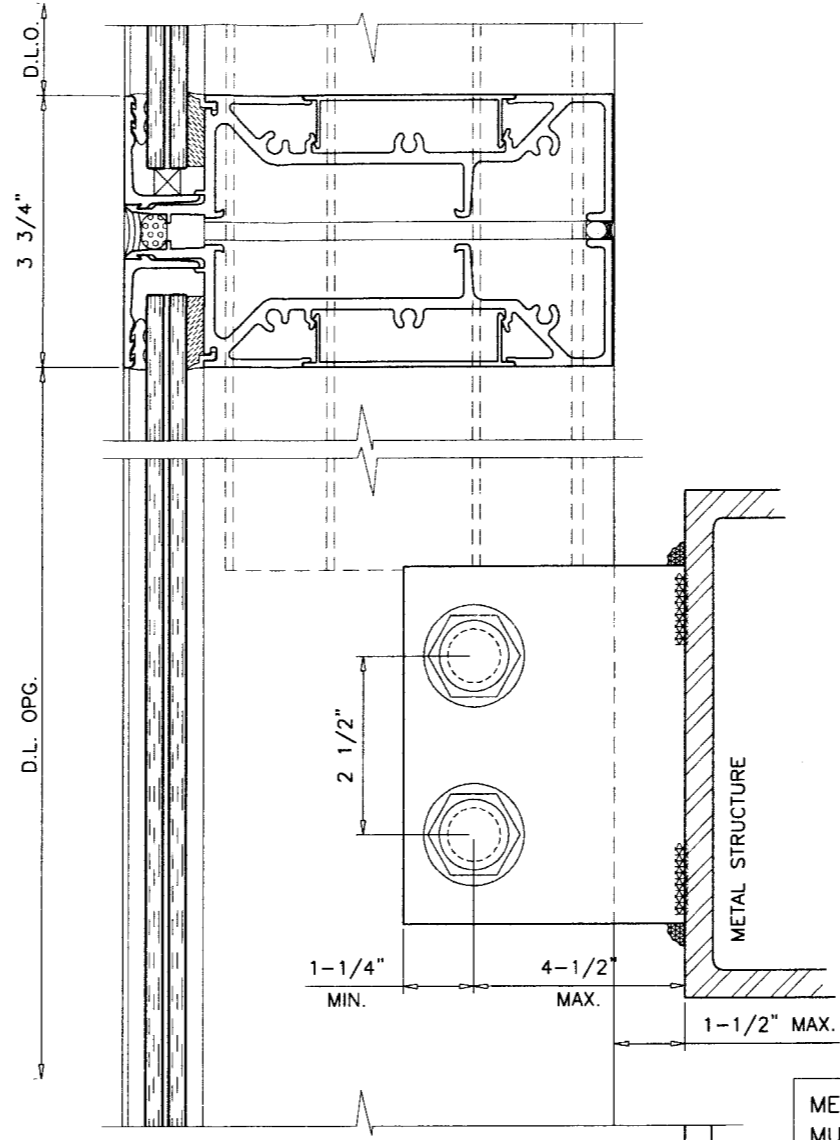
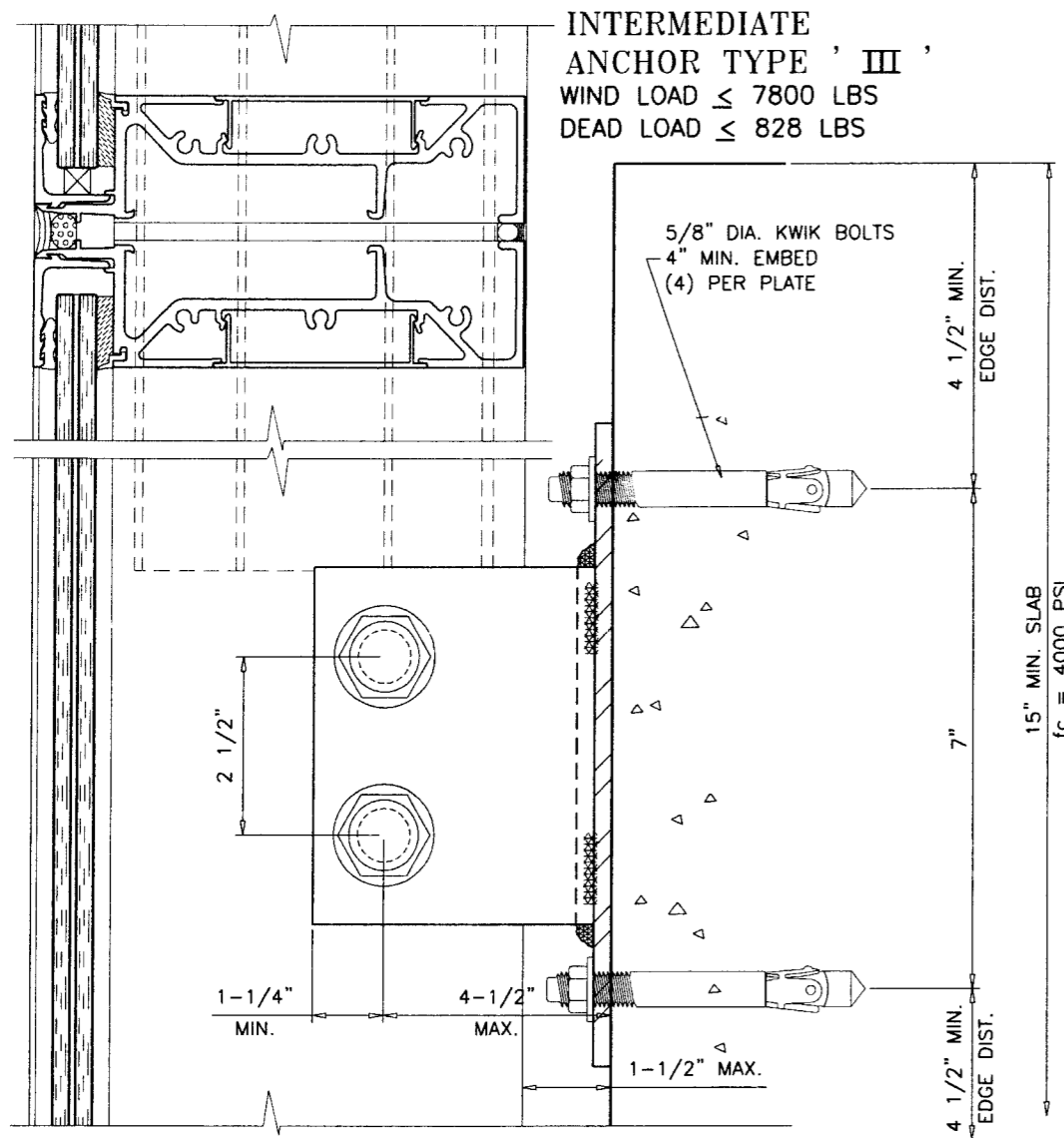
FIRRO-TECH 7 ALUM CURTAIN WALL SYSTEM
CRAWFORD TRACEY CORPORATION
 3301 SW 13TH DRIVE
 DEERFIELD BEACH, FL. 33442-8101
 TEL. (954) 698-6888 FAX. (954) 698-6889

revisions:

no	date	description
A	5.27.03	NO CHANGE THIS SHEET
B	01.23.07	UPDATED FOR 2004 FBC
C	02.12.10	UPDATED FOR 2007 FBC

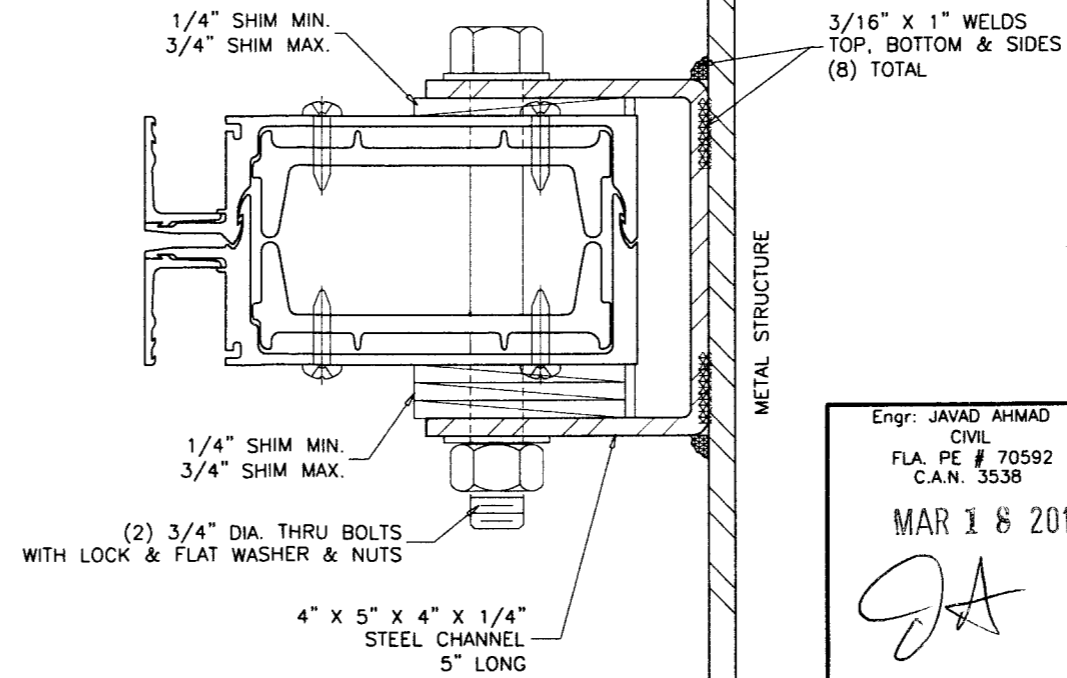
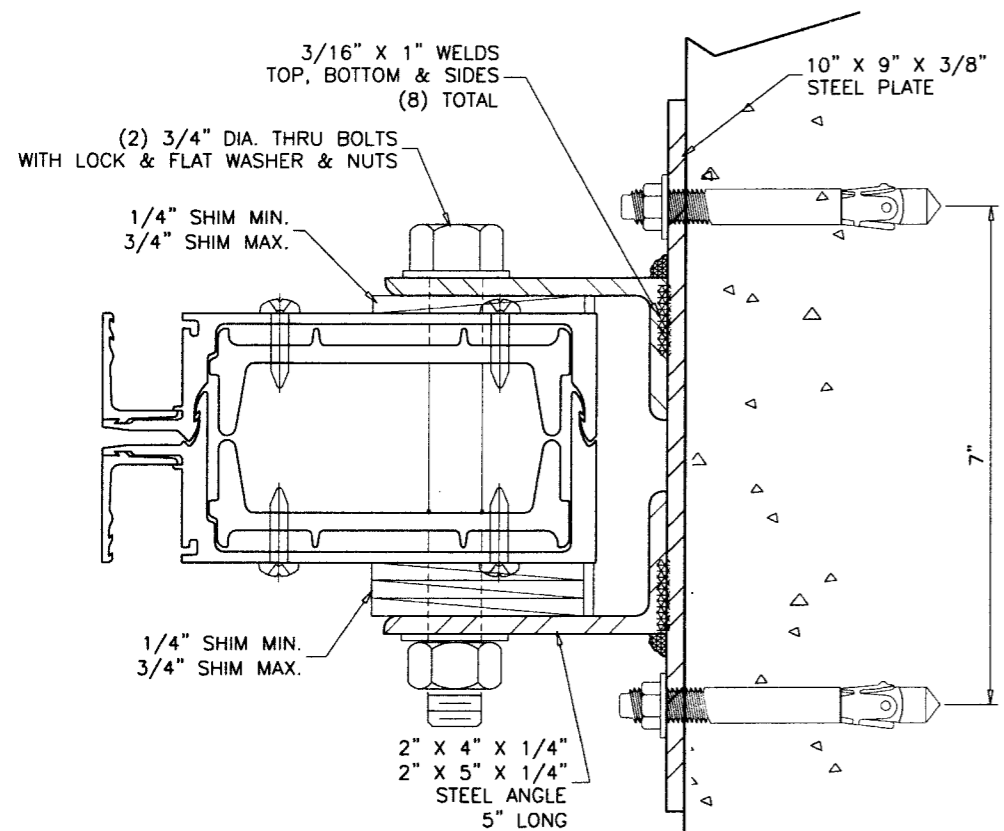
date: 06-11-02
 scale: 3/8" = 1"
 dr. by: HAMID
 ch. by:
 drawing no.
W02-109
 sheet 13 of 15

INTERMEDIATE ANCHOR TYPE ' III '
 WIND LOAD \leq 7800 LBS
 DEAD LOAD \leq 828 LBS



INTERMEDIATE ANCHOR TYPE ' IV '
 WIND LOAD \leq 8800 LBS
 DEAD LOAD \leq 828 LBS

METAL STRUCTURES NOT BY CRAWFORD TRACEY, MUST SUPPORT LOADS IMPOSED BY GLAZING SYSTEM AND TRANSFER THEM TO THE BUILDING STRUCTURE.



Engr: JAVAD AHMAD
 CIVIL
 FLA. PE # 70592
 C.A.N. 3538
 MAR 18 2010
JA

PRODUCT REVIEWED
 as complying with the Florida
 Building Code
 Approval No. 10-0412.05
 June 26, 2013
Manuel Perez

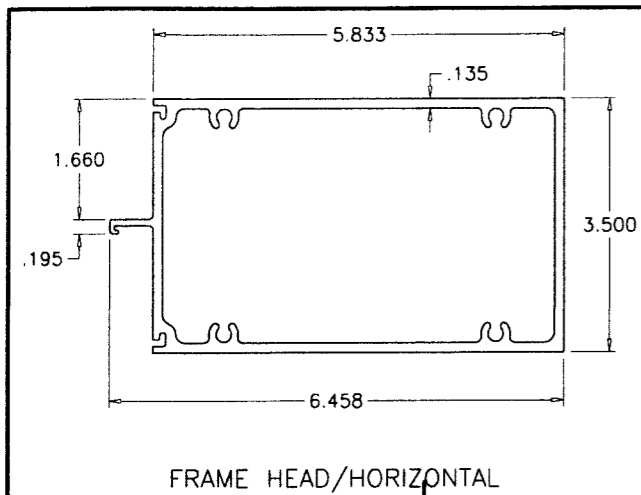
afC
AL-FAROOQ CORPORATION
 ENGINEERS & PRODUCT DEVELOPMENT
 1235 S.W. 87 AVE
 MIAMI, FLORIDA 33174
 TEL. (305) 264-8100 FAX. (305) 262-6978
 STORE/W02-109CTC

PRO-TECH 7 ALUM CURTAIN WALL SYSTEM
CRAWFORD TRACEY CORPORATION
 3301 SW 13TH DRIVE
 DEERFIELD BEACH, FL. 33442-8101
 TEL. (954) 698-6888 FAX. (954) 698-6889

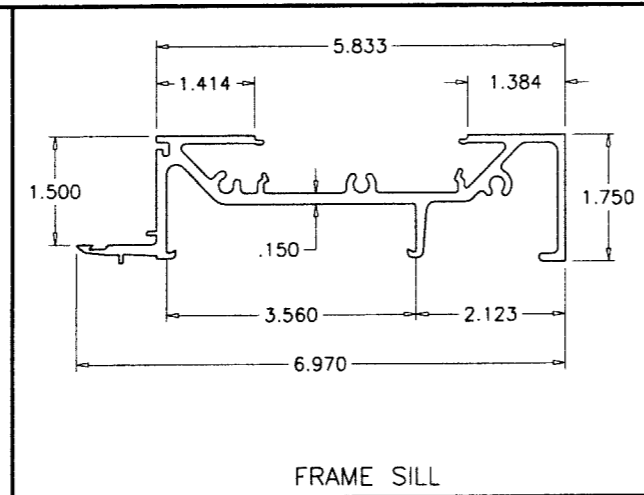
no	date	description
A	5.27.03	NO CHANGE THIS SHEET
B	01.23.07	UPDATED FOR 2004 FBC
C	02.12.10	NO CHANGE THIS SHEET

date: 06-11-02
 scale: 3/8" = 1"
 dr. by: HAMID
 chk. by:

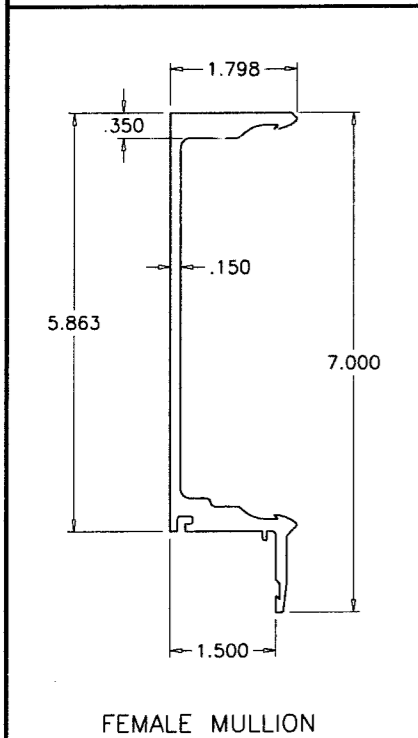
drawing no.
W02-109
 sheet 14 of 15



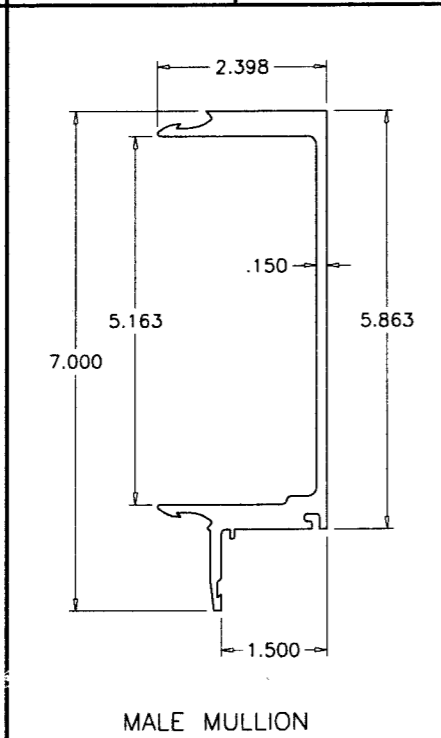
FRAME HEAD/HORIZONTAL



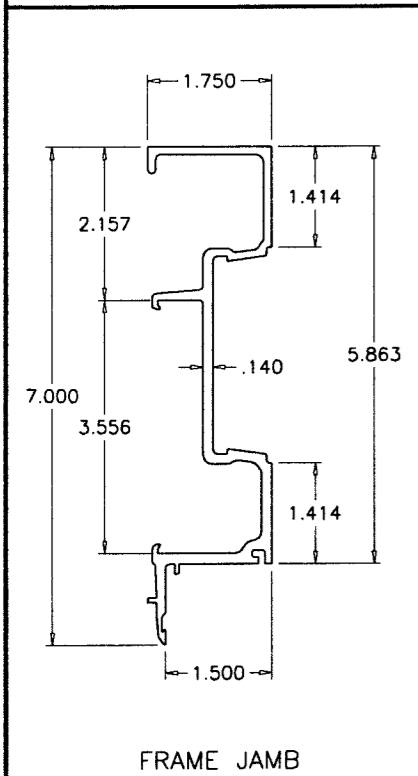
FRAME SILL



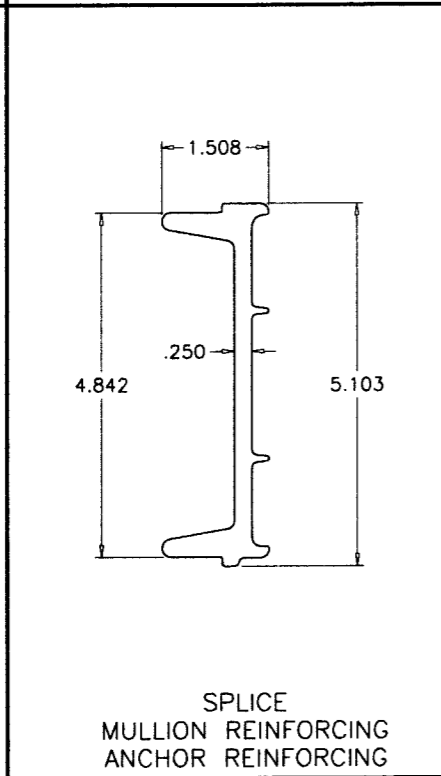
FEMALE MULLION



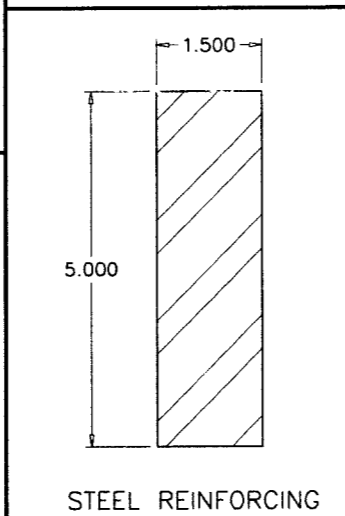
MALE MULLION



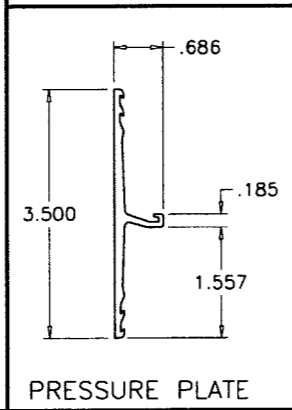
FRAME JAMB



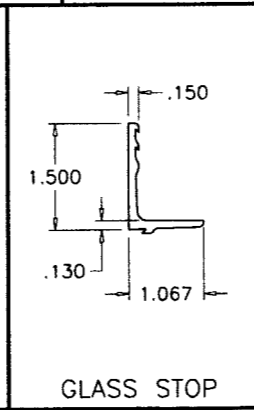
SPLICE MULLION REINFORCING ANCHOR REINFORCING



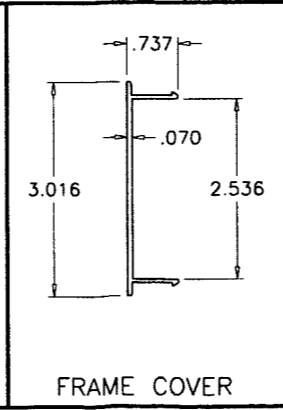
STEEL REINFORCING



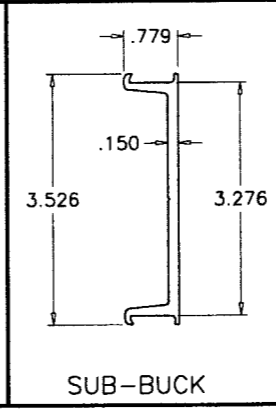
PRESSURE PLATE



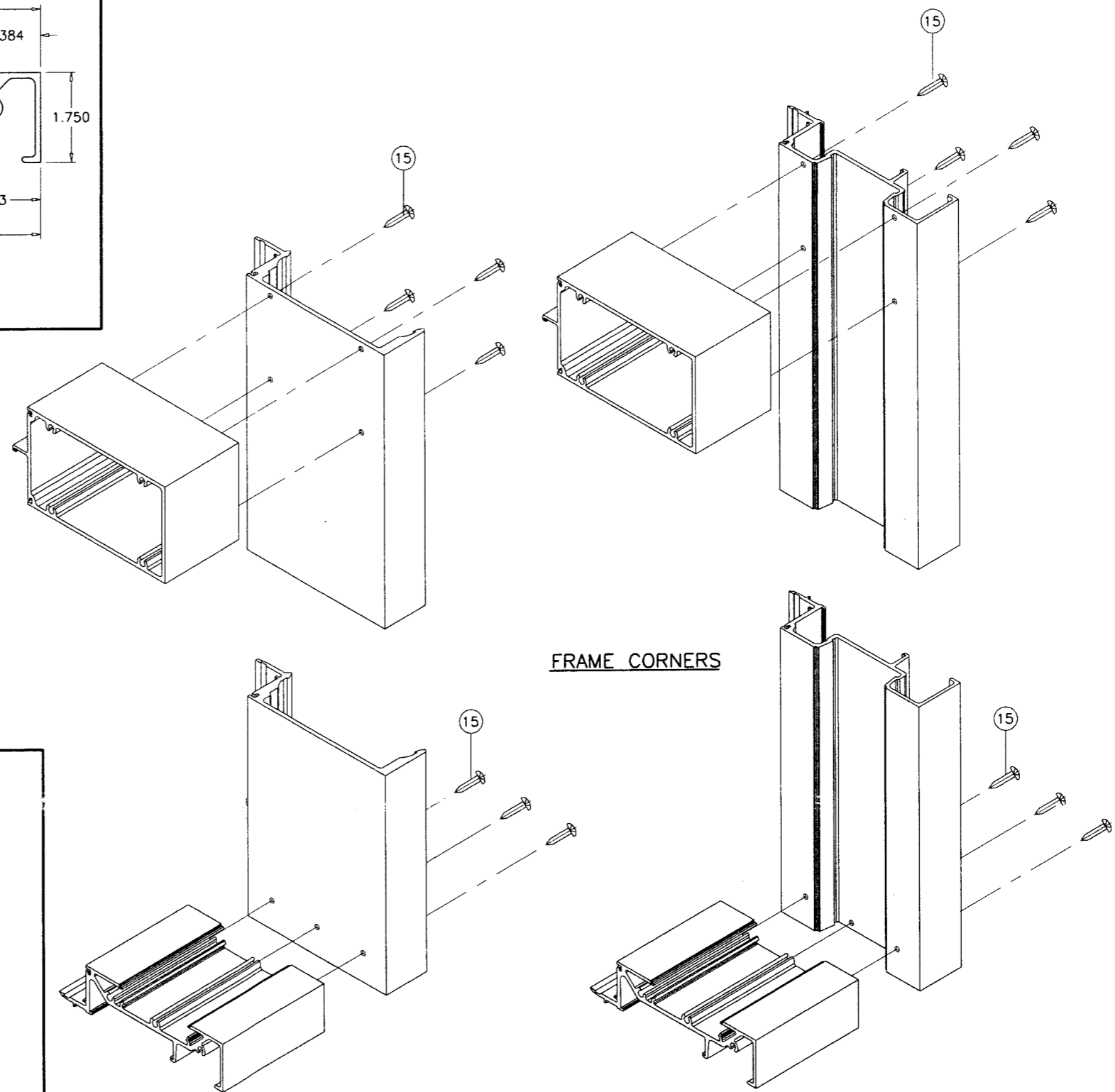
GLASS STOP



FRAME COVER



SUB-BUCK



FRAME CORNERS

Engr: JAVAD AHMAD
 CIVIL
 FLA. PE # 70592
 C.A.N. 3538
 MAR 18 2010

PRODUCT REVISION
 as existing with the Florida
 Building Code
 Approved by:
 10-0412.05
 JUNE 26, 2013
 Manuel Perez

af c
AL-FAROOQ CORPORATION
 ENGINEERS & PRODUCT DEVELOPMENT
 1235 S.W. 87 AVE
 MIAMI, FLORIDA 33174
 TEL. (305) 264-8100 FAX. (305) 262-6978
 STORE/W02-109CTC

PRO-TECH 7 ALUM CURTAIN WALL SYSTEM
CRAWFORD TRACEY CORPORATION
 3301 SW 13TH DRIVE
 DEERFIELD BEACH, FL. 33442-8101
 TEL. (954) 698-6888 FAX. (954) 698-6889

no	date	description
A	5.27.03	NO CHANGE THIS SHEET
B	01.23.07	UPDATED FOR 2004 FBC
C	02.12.10	NO CHANGE THIS SHEET

date: 06-11-02
 scale: 3/8" = 1"
 dr. by: HAMID
 chk. by:
 drawing no.
W02-109
 sheet 15 of 15