



MIAMI-DADE COUNTY
BUILDING CODE COMPLIANCE OFFICE (BCCO)
PRODUCT CONTROL DIVISION

MIAMI-DADE COUNTY, FLORIDA
METRO-DADE FLAGLER BUILDING
140 WEST FLAGLER STREET, SUITE 1603
MIAMI, FLORIDA 33130-1563
(305) 375-2901 FAX (305) 372-6339

NOTICE OF ACCEPTANCE (NOA)

www.maimidade.gov/buildingcode

Crawford Tracey Corporation
3301 SW 13th Drive
Deerfield Beach, FL 33442

SCOPE:

This NOA is being issued under the applicable rules and regulations governing the use of construction materials. The documentation submitted has been reviewed by Miami-Dade County Product Control Division and accepted by the Board of Rules and Appeals (BORA) to be used in Miami Dade County and other areas where allowed by the Authority Having Jurisdiction (AHJ).

This NOA shall not be valid after the expiration date stated below. The Miami-Dade County Product Control Division (In Miami Dade County) and/or the AHJ (in areas other than Miami Dade County) reserve the right to have this product or material tested for quality assurance purposes. If this product or material fails to perform in the accepted manner, the manufacturer will incur the expense of such testing and the AHJ may immediately revoke, modify, or suspend the use of such product or material within their jurisdiction. BORA reserves the right to revoke this acceptance, if it is determined by Miami-Dade County Product Control Division that this product or material fails to meet the requirements of the applicable building code.

This product is approved as described herein, and has been designed to comply with the Florida Building Code, including the High Velocity Hurricane Zone.

DESCRIPTION: Series "Pro-Tech 45SG" Aluminum Window Wall System – S.M.I.

APPROVAL DOCUMENT: Drawing No. **W06-02**, titled "Pro-Tech 45SG Alum. Window Wall System (S.M.I.)", sheets 1 through 8 of 8, dated 01/05/06 with revision A dated 02/27/08, prepared by Al-Farooq Corporation, signed and sealed by Humayoun Farooq, P.E., bearing the Miami-Dade County Product Control Revision stamp with the Notice of Acceptance number and expiration date by the Miami-Dade County Product Control Division.

MISSILE IMPACT RATING: Small Missile Impact Resistant

LABELING: Each unit shall bear a permanent label with the manufacturer's name or logo, city, state and following statement: "Miami-Dade County Product Control Approved", unless otherwise noted herein.

RENEWAL of this NOA shall be considered after a renewal application has been filed and there has been no change in the applicable building code negatively affecting the performance of this product.

TERMINATION of this NOA will occur after the expiration date or if there has been a revision or change in the materials, use, and/or manufacture of the product or process. Misuse of this NOA as an endorsement of any product, for sales, advertising or any other purposes shall automatically terminate this NOA. Failure to comply with any section of this NOA shall be cause for termination and removal of NOA.

ADVERTISEMENT: The NOA number preceded by the words Miami-Dade County, Florida, and followed by the expiration date may be displayed in advertising literature. If any portion of the NOA is displayed, then it shall be done in its entirety.

INSPECTION: A copy of this entire NOA shall be provided to the user by the manufacturer or its distributors and shall be available for inspection at the job site at the request of the Building Official. This NOA **revises NOA # 06-0119.11** and consists of this page 1 and evidence pages E-1 and E-2, as well as approval document mentioned above.

The submitted documentation was reviewed by **Manuel Perez, P.E.**



NOA No. 08-0415.07
Expiration Date: June 22, 2011
Approval Date: May 22, 2008
Page 1

Crawford Tracey Corporation

NOTICE OF ACCEPTANCE: EVIDENCE SUBMITTED

A. DRAWINGS

1. Manufacturer's die drawings and sections.
2. Drawing No. **W06-02**, titled "Pro-Tech 45SG Alum Window Wall System (S.M.I)", sheets 1 through 8 of 8, dated 01/05/06, with revision A dated 02/27/08, prepared by Al-Farooq, signed and sealed by Humayoun Farooq, P.E.

B. TESTS

1. Test reports on 1) Air Infiltration Test, per FBC, TAS 202-94
2) Uniform Static Air Pressure Test, Loading per FBC TAS 202-94
3) Water Resistance Test, per FBC, TAS 202-94
4) Large Missile Impact Test per FBC, TAS 201-94
5) Small Missile Impact Test per FBC, TAS 201-94
6) Cyclic Wind Pressure Loading per FBC, TAS 203-94
along with marked-up drawings and installation diagram of a series 45SG aluminum window wall system, prepared by American Test Lab of South Florida, Test Report No. **ATL-1129.01-07**, dated 01/29/08, signed and sealed by Henry Hattem, P.E.
2. Test reports on 1) Air Infiltration Test, per FBC, TAS 202-94
2) Uniform Static Air Pressure Test, Loading per FBC, TAS 202-94
3) Water Resistance Test, per FBC, TAS 202-94
4) Small Missile Impact Test per FBC, TAS 201-94
5) Cyclic Wind Pressure Loading per FBC, TAS 203-94
along with marked-up drawings and installation diagram of a Pro -Tech 45SG -SMI, aluminum window wall system, prepared by American Test Lab of South Florida, Test Report No. **ATL-0310.01-05** dates 06/01/05, signed and sealed by Henry Hattem, P.E.
(Submitted under NOA# 06-0119.11)

C. CALCULATIONS

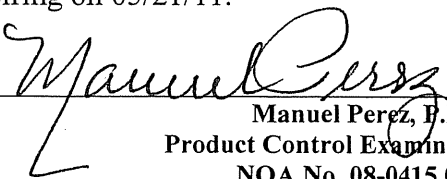
1. Anchor verification calculations and structural analysis, complying with FBC-2004, prepared by Al-Farooq Corporation, dated 03/05/08, signed and sealed by Humayoun Farooq, P.E.
Complies with ASTM E1300-02

D. QUALITY ASSURANCE

1. Miami Dade Building Code Compliance Office (BCCO).

E. MATERIAL CERTIFICATIONS

1. Notice of Acceptance No. **06-0216.06** issued to Solutia Inc. for their "**Saflex III G Clear or colored Interlayer**" dated 05/04/06, expiring on 05/21/11.


Manuel Perez, P.E.
Product Control Examiner
NOA No. 08-0415.07
Expiration Date: June 22, 2011
Approval Date: May 22, 2008

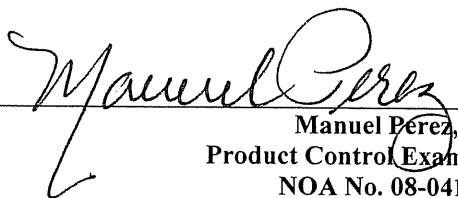
NOTICE OF ACCEPTANCE: EVIDENCE SUBMITTED

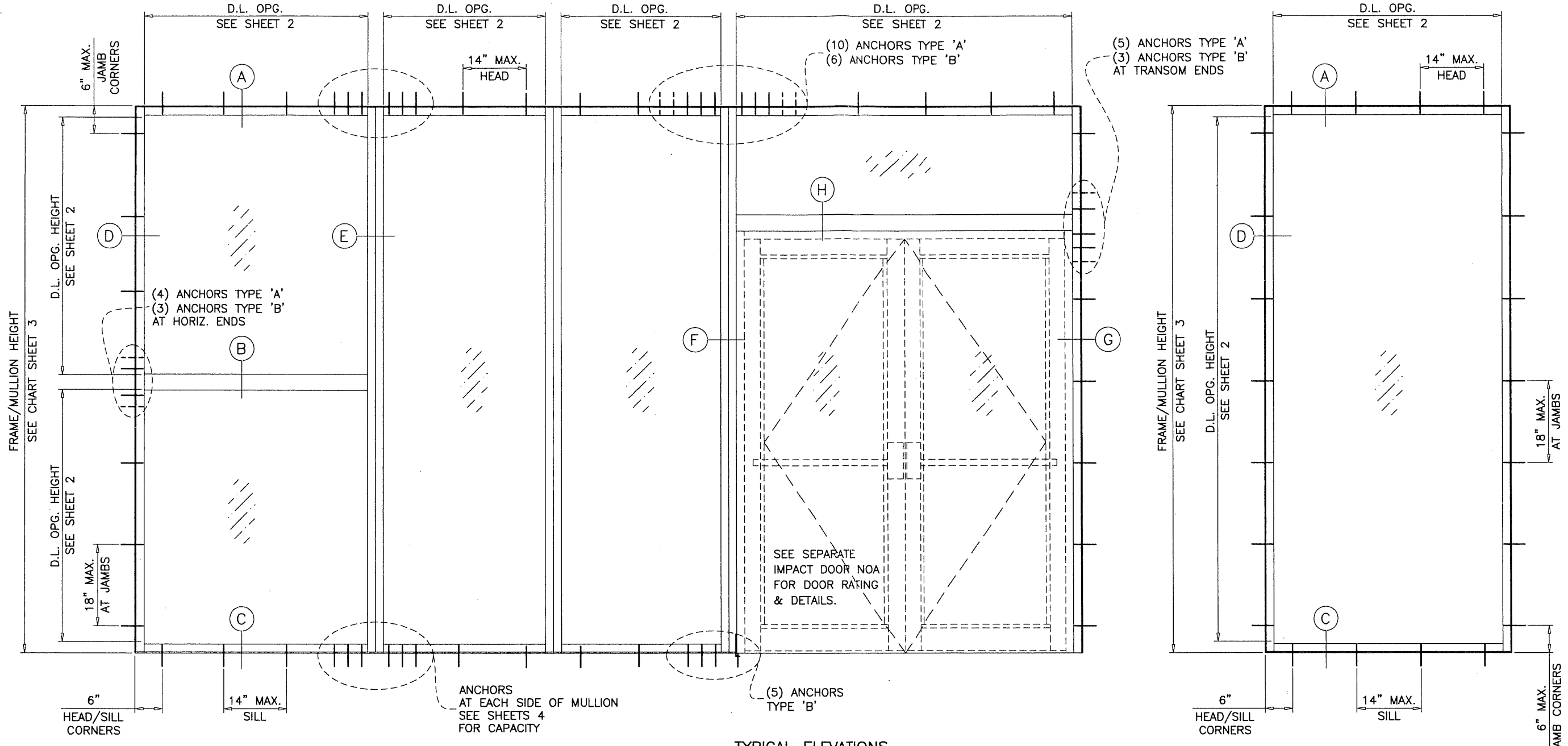
F. STATEMENTS

1. Statement letter of conformance, dated March 5, 2008, signed and sealed by Humayoun Farooq, P.E.
2. Statement letter of no financial interest, dated March 5, 2008, signed and sealed by Humayoun Farooq, P.E.
3. Laboratory compliance letter for Test Report No. **ATL-1129.01-07**, issued by American Test Lab of South Florida, dated 01/29/08, signed and sealed by Henry Hattem, P.E.

G. OTHER

1. Notice of Acceptance No. **06-0119.11**, issued to Crawford Tracey Corporation for "Series "Pro-Tech 45SG" Aluminum Window Wall System - S.M.I.", dated 06/22/06 and expiring on 06/22/11.


Manuel Perez, P.E.
Product Control Examiner
NOA No. 08-0415.07
Expiration Date: June 22, 2011
Approval Date: May 22, 2008



TYPICAL ELEVATIONS

PRO-TECH 45SG ALUM WINDOW WALL SYSTEM

THIS SYSTEM MAY BE USED IN CONJUNCTION WITH MIAMI-DADE COUNTY APPR'D LARGE MISSILE IMPACT RESISTANT DOORS. LOWER DESIGN PRESSURE FROM WINDOW WALL SYSTEM OR DOOR APPROVAL WILL APPLY TO ENTIRE SYSTEM.

CODE REQUIREMENTS FOR SAFEGUARDS MUST BE OBSERVED.

THIS PRODUCT HAS BEEN DESIGNED AND TESTED TO COMPLY WITH THE REQUIREMENTS OF THE FLORIDA BUILDING CODE 2004 EDITION INCLUDING HIGH VELOCITY HURRICANE ZONE (HVHZ).

WOOD BUCKS BY OTHERS, MUST BE ANCHORED PROPERLY TO TRANSFER LOADS TO THE STRUCTURE.

ANCHORS SHALL BE AS LISTED, SPACED AS SHOWN ON DETAILS, ANCHORS EMBEDMENT TO BASE MATERIAL SHALL BE BEYOND WALL DRESSING OR STUCCO.

ANCHORING OR LOADING CONDITIONS NOT SHOWN IN THESE DETAILS ARE NOT PART OF THIS APPROVAL.

A LOAD DURATION INCREASE IN ALLOWABLE STRESS IS USED IN DESIGN OF ANCHORS INTO WOOD ONLY.

MATERIALS INCLUDING BUT NOT LIMITED TO STEEL/METAL SCREWS, THAT COME INTO CONTACT WITH OTHER DISSIMILAR MATERIALS SHALL MEET THE REQUIREMENTS OF 2004 FLORIDA BLDG. CODE SECTION 2003.8.4.

THIS SYSTEM IS RATED FOR SMALL MISSILE IMPACT. MIAMI-DADE COUNTY APPROVED IMPACT RESISTANT SHUTTERS REQUIRED FOR INSTALLATIONS UP TO 30 FT. OF GRADE. SHUTTERS NOT REQD. FOR INSTALLATIONS ABOVE 30 FT. OF GRADE.

INSTRUCTIONS:

USE CHARTS AS FOLLOWS.

- STEP 1** DETERMINE DESIGN WIND LOAD REQUIREMENTS BASED ON WIND VELOCITY, BLDG. HEIGHT, WIND ZONE USING APPLICABLE ASCE 7 STANDARD.
- STEP 2** SEE CHARTS ON SHEETS 2 FOR DESIGN LOAD CAPACITY OF DESIRED GLASS SIZE BASED ON APPLICABLE
- STEP 3** CHECK MULLION CAPACITY FOR A GIVEN SPACING AND HEIGHT USING CHARTS ON SHEET 3 THE CAPACITY SHOULD EXCEED THE DESIGN LOAD.
- STEP 4** USING CHART ON SHEETS 4 SELECT ANCHOR OPTION WITH DESIGN RATING MORE THAN DESIGN LOAD SPECIFIED IN STEP 1 ABOVE.
- STEP 5** THE LOWEST VALUE RESULTING FROM STEPS 2, 3 AND 4 SHALL APPLY TO ENTIRE SYSTEM.

**LAMINATED GLASS
SMALL MISSILE IMPACT**

Engr: DR. HUMAYCUN FAROOQ
STRUCTURES
FLA. PE # 16557
C.A.N. 3538

DATE: MAR 17 2008

PRODUCT REVISED
in compliance with the Florida
Building Code
Acceptance No. 08-0415.07
Expiration Date 06/22/2011
By: *Mauro Perez*
Division: Product Control

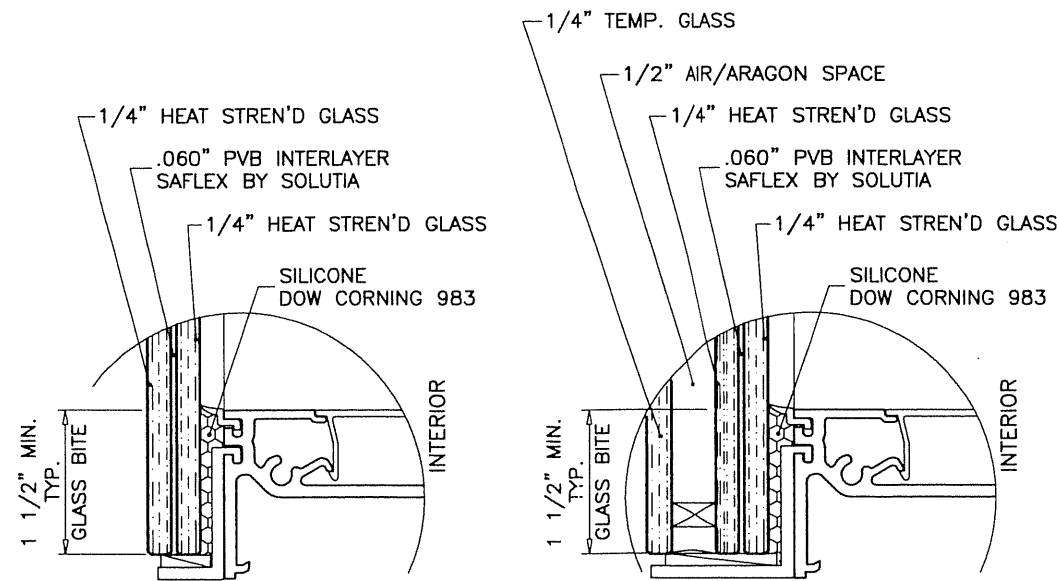
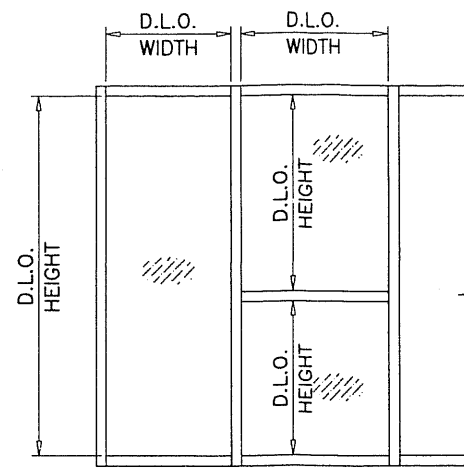
af c
AL-FAROOQ CORPORATION
ENGINEERS & PRODUCT DEVELOPMENT
1235 S.W. 87 AVE
MIAMI, FLORIDA 33174
TEL. (305) 264-8100 FAX. (305) 262-6978
STORE/W06-02CTC

PRO-TECH 45SG ALUM WINDOW WALL SYSTEM (S.M.I.)
CRAWFORD TRACEY CORPORATION
3301 SW 13TH DRIVE
DEERFIELD BEACH, FL. 33442-8101
TEL. (954) 698-6888 FAX. (954) 698-6889

revisions:	no.	date	by	description
	A	02.27.08		NOTES REV.
date:	01-05-06			
scale:	1/2" = 1'-0"			
dr. by:	HAMID			
chk. by:				
drawing no.	W06-02			
sheet	1 of 8			

GLASS LOAD CAPACITY - PSF			
NOMINAL DIMS.		GLASS TYPE 'A'	GLASS TYPE 'A1'
D.L.O. WIDTH	D.L.O. HEIGHT	EXT. (+) INT. (-)	EXT. (+) INT. (-)
24"	72"	100.0	100.0
30"		100.0	100.0
36"		100.0	100.0
42"		100.0	100.0
48"		100.0	100.0
54"		100.0	100.0
60"		100.0	100.0
66"		100.0	100.0
72"	100.0	100.0	
24"	78"	100.0	100.0
30"		100.0	100.0
36"		100.0	100.0
42"		100.0	100.0
48"		100.0	100.0
54"		100.0	100.0
60"		100.0	100.0
66"		100.0	100.0
24"	84"	100.0	100.0
30"		100.0	100.0
36"		100.0	100.0
42"		100.0	100.0
48"		100.0	100.0
54"		100.0	100.0
60"	100.0	100.0	
24"	90"	100.0	100.0
30"		100.0	100.0
36"		100.0	100.0
42"		100.0	100.0
48"		100.0	100.0
54"		100.0	100.0
24"	96"	100.0	100.0
30"		100.0	100.0
36"		100.0	100.0
42"		100.0	100.0
48"		100.0	100.0
54"		100.0	100.0
24"	102"	100.0	100.0
30"		100.0	100.0
36"		100.0	100.0
42"		100.0	100.0
48"		100.0	100.0

GLASS LOAD CAPACITY - PSF			
NOMINAL DIMS.		GLASS TYPE 'A'	GLASS TYPE 'A1'
D.L.O. WIDTH	D.L.O. HEIGHT	EXT. (+) INT. (-)	EXT. (+) INT. (-)
24"	108"	100.0	100.0
30"		100.0	100.0
36"		100.0	100.0
42"		100.0	100.0
48"		100.0	100.0
24"	114"	100.0	100.0
30"		100.0	100.0
36"		100.0	100.0
42"		100.0	100.0
24"	120"	100.0	100.0
30"		100.0	100.0
36"		100.0	100.0
42"		100.0	100.0
44-1/2"		116-1/2"	100.0
56-1/2"	92-1/2"	94.9	100.0



GLASS TYPE 'A'
9/16" OVERALL LAM. GLASS

GLASS TYPE 'A1'
1-5/16" OVERALL INSUL. LAM. GLASS

GLAZING OPTIONS

NOTE:
GLASS CAPACITIES ON THIS SHEET ARE
BASED ON ASTM E1300-02 (3 SEC. GUSTS).

Engr: DR. HUMAYOUN FAROOQ
STRUCTURES
FLA. PE # 16557
C.A.N. 3538

PRODUCT REVISED:
As complying with the Florida
Building Code
Adopted No. 08-0415.07
Revision Date 06/22/2011
By: *Manuel Perez*
Minimum Code Product Control
Division

MAR 17 2008

af c
AL-FAROOQ CORPORATION
ENGINEERS & PRODUCT DEVELOPMENT
1235 S.W. 87 AVE
MIAMI, FLORIDA 33174
TEL. (305) 264-8100 FAX. (305) 262-6978
STORE/W06-02CTC

PRO-TECH 45SG ALUM WINDOW WALL SYSTEM (S.M.I.)
CRAWFORD TRACEY CORPORATION
3301 SW 13TH DRIVE
DEERFIELD BEACH, FL. 33442-8101
TEL. (954) 698-6888 FAX. (954) 698-6889

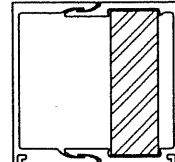
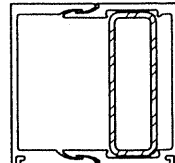
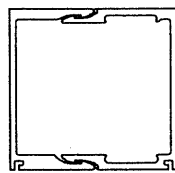
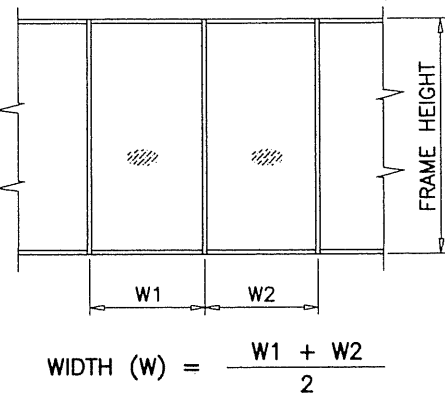
revisions:		no	date	by	description
A	02.27.08				INSUL. GLASS ADDED

date: 01-05-06
scale: 1/2" = 1"
dr. by: HAMID
chk. by:

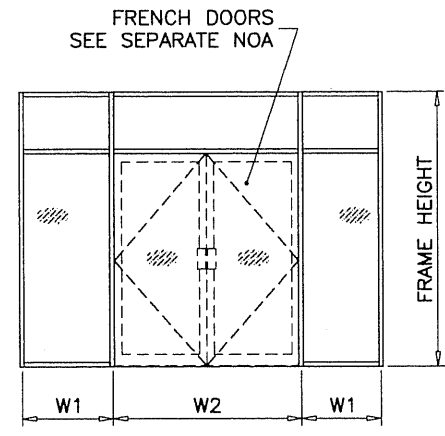
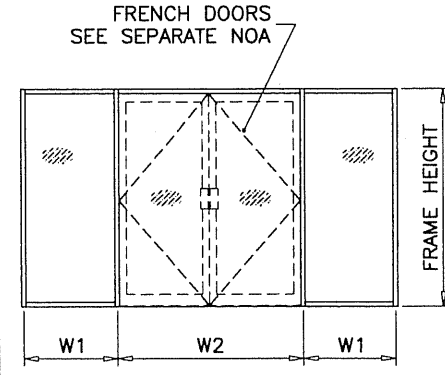
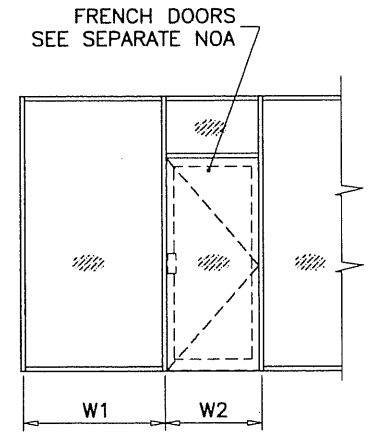
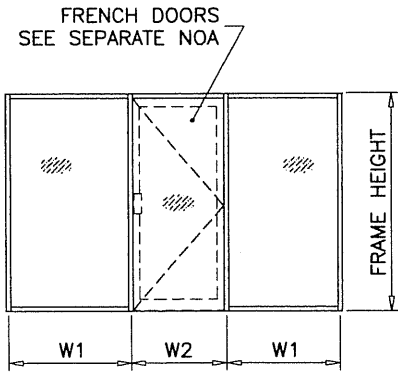
drawing no.
W06-02

sheet 2 of 8

MULLION LOAD CAPACITY - PSF WITHOUT INTERMEDIATE HORIZONTALS					
NOMINAL DIMS.		WITHOUT REINF.	LIGHT REINF.	HEAVY REINF.	
WIDTH (W)	FRAME HEIGHT	EXT. (+) INT. (-)	EXT. (+) INT. (-)	EXT. (+) INT. (-)	
24"	78"	100.0	100.0	100.0	
30"		100.0	100.0	100.0	
36"		100.0	100.0	100.0	
42"		100.0	100.0	100.0	
48"		100.0	100.0	100.0	
54"		100.0	100.0	100.0	
60"		100.0	100.0	100.0	
66"		100.0	100.0	100.0	
72"	100.0	100.0	100.0		
24"	84"	100.0	100.0	100.0	
30"		100.0	100.0	100.0	
36"		100.0	100.0	100.0	
42"		100.0	100.0	100.0	
48"		100.0	100.0	100.0	
54"		94.9	100.0	100.0	
60"		89.2	100.0	100.0	
66"		85.2	100.0	100.0	
24"	90"	100.0	100.0	100.0	
30"		100.0	100.0	100.0	
36"		100.0	100.0	100.0	
42"		91.1	100.0	100.0	
48"		82.0	100.0	100.0	
54"		75.4	98.1	100.0	
60"		70.4	91.3	100.0	
24"		96"	100.0	100.0	100.0
30"	99.9		100.0	100.0	
36"	84.8		100.0	100.0	
42"	74.2		100.0	100.0	
48"	66.6		93.1	100.0	
54"	60.9		84.8	100.0	
60"	56.7		78.5	100.0	
24"	102"		100.0	100.0	100.0
30"		82.9	100.0	100.0	
36"		70.2	100.0	100.0	
42"		61.3	91.6	100.0	
48"		54.8	81.7	100.0	
54"		50.0	74.1	100.0	
24"		108"	86.1	100.0	100.0
30"			69.6	100.0	100.0
36"	58.8		93.5	100.0	
42"	51.2		81.2	100.0	
48"	45.7		72.2	99.9	
24"	114"		73.0	100.0	100.0
30"			59.0	93.8	100.0
36"			49.8	79.1	100.0
42"		43.3	68.8	100.0	
48"		38.5	61.3	89.0	
24"		120"	62.5	99.4	100.0
30"			50.4	80.2	100.0
36"			42.5	67.6	100.0
42"	36.9		58.7	90.1	
48"	32.8		52.2	79.9	



MULLION LOAD CAPACITY - PSF WITH INTERMEDIATE HORIZONTALS OR MULLION WITH DOORS					
NOMINAL DIMS.		WITHOUT REINF.	LIGHT REINF.	HEAVY REINF.	
WIDTH (W)	FRAME HEIGHT	EXT. (+) INT. (-)	EXT. (+) INT. (-)	EXT. (+) INT. (-)	
24"	78"	100.0	100.0	100.0	
30"		100.0	100.0	100.0	
36"		100.0	100.0	100.0	
42"		100.0	100.0	100.0	
48"		100.0	100.0	100.0	
54"		99.7	100.0	100.0	
60"		89.8	100.0	100.0	
66"		81.6	94.2	100.0	
72"	74.8	86.4	100.0		
24"	84"	100.0	100.0	100.0	
30"		100.0	100.0	100.0	
36"		100.0	100.0	100.0	
42"		100.0	100.0	100.0	
48"		89.8	100.0	100.0	
54"		79.9	99.3	100.0	
60"		71.9	89.4	100.0	
66"		65.3	81.3	100.0	
24"	90"	100.0	100.0	100.0	
30"		100.0	100.0	100.0	
36"		97.4	100.0	100.0	
42"		83.5	100.0	100.0	
48"		73.0	97.3	100.0	
54"		64.9	86.5	100.0	
60"		58.4	77.9	100.0	
24"		96"	100.0	100.0	100.0
30"	96.3		100.0	100.0	
36"	80.2		100.0	100.0	
42"	68.8		97.8	100.0	
48"	60.2		85.5	100.0	
54"	53.5		76.0	100.0	
60"	48.1		68.4	94.7	
24"	102"		100.0	100.0	100.0
30"		80.3	100.0	100.0	
36"		66.9	100.0	100.0	
42"		57.3	86.6	100.0	
48"		50.2	75.8	100.0	
54"		44.6	67.4	93.2	
24"		108"	84.5	100.0	100.0
30"			67.6	100.0	100.0
36"	56.4		89.6	100.0	
42"	48.3		76.8	100.0	
48"	42.3		67.2	93.5	
24"	114"		71.9	100.0	100.0
30"			57.5	91.4	100.0
36"			47.9	76.2	100.0
42"		41.1	65.3	95.9	
48"		35.9	57.2	83.9	
24"		120"	61.6	98.0	100.0
30"			49.3	78.4	100.0
36"			41.1	65.3	100.0
42"	35.2		56.0	86.6	
48"	30.8		49.0	75.7	



WIDTH (W) = $\frac{W1}{2} + \frac{W2}{4}$

WIDTH (W) = $\frac{W1 + W2}{2}$

Engr. DR. HUMAYOON FAROOQ
STRUCTURES
FLA. PE # 16557
C.A.N. 3538

APR 17 2008

PRODUCT REVIEWED
as complying with the Florida
Building Code
Approval No. 08-0415.07
Expiration Date 06/22/2011

By: *[Signature]*
Manufacturer Product Control
Date: *[Signature]*

af
AL-FAROOQ CORPORATION
ENGINEERS & PRODUCT DEVELOPMENT
1235 S.W. 87 AVE
MIAMI, FLORIDA 33174
TEL. (305) 264-8100 FAX. (305) 262-6978
STORE W06-02CTC

PRO-TECH 45SG ALUM WINDOW WALL SYSTEM (S.M.I.)
CRAWFORD TRACEY CORPORATION
3301 SW 13TH DRIVE
DEERFIELD BEACH, FL. 33442-8101
TEL. (954) 698-6888 FAX. (954) 698-6889

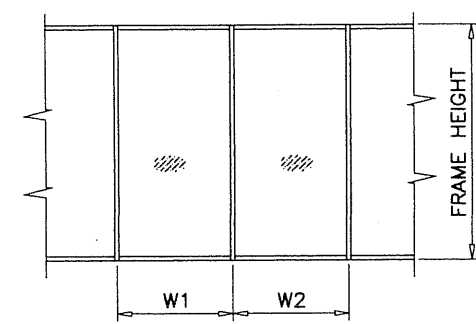
no.	date	by	description
A	02.27.08		NO CHANGE THIS SHEET

date: 01-05-06
scale:
dr. by: HAMID
chk. by:

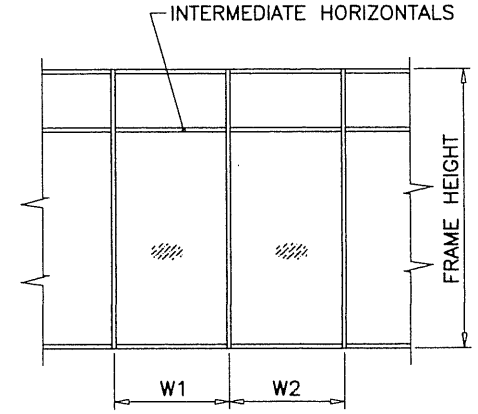
drawing no.
W06-02
sheet 3 of 8

ANCHOR LOAD CAPACITY - PSF
EXT.(+) & INT.(-)

NOMINAL DIMS.		ANCHORS TYPE 'A'		ANCHORS TYPE 'B'		
WIDTH (W)	FRAME HEIGHT	A2	A3	B1	B2	
24"	78"	100.0	100.0	100.0	100.0	
30"		100.0	100.0	100.0	100.0	
36"		100.0	100.0	100.0	100.0	
42"		100.0	100.0	100.0	100.0	
48"		100.0	100.0	100.0	100.0	
54"		98.5	100.0	100.0	100.0	
60"		98.5	100.0	100.0	100.0	
66"		94.0	100.0	100.0	100.0	
72"	94.0	100.0	100.0	100.0		
24"	84"	100.0	100.0	100.0	100.0	
30"		100.0	100.0	100.0	100.0	
36"		100.0	100.0	100.0	100.0	
42"		100.0	100.0	100.0	100.0	
48"		100.0	100.0	100.0	100.0	
54"		91.4	100.0	100.0	100.0	
60"		91.4	100.0	100.0	100.0	
66"		87.3	100.0	100.0	100.0	
24"	90"	100.0	100.0	100.0	100.0	
30"		100.0	100.0	100.0	100.0	
36"		100.0	100.0	100.0	100.0	
42"		100.0	100.0	100.0	100.0	
48"		96.0	100.0	100.0	100.0	
54"		85.3	100.0	100.0	100.0	
60"		85.3	100.0	100.0	100.0	
24"		96"	100.0	100.0	100.0	100.0
30"	100.0		100.0	100.0	100.0	
36"	100.0		100.0	100.0	100.0	
42"	100.0		100.0	100.0	100.0	
48"	90.0		100.0	98.8	100.0	
54"	80.0		100.0	98.8	100.0	
60"	80.0		96.0	98.8	100.0	
24"	102"		100.0	100.0	100.0	100.0
30"		100.0	100.0	100.0	100.0	
36"		94.1	100.0	100.0	100.0	
42"		94.1	100.0	100.0	100.0	
48"		84.7	100.0	92.9	100.0	
54"		75.3	100.0	92.9	100.0	
24"		108"	100.0	100.0	100.0	100.0
30"			100.0	100.0	100.0	100.0
36"	88.9		100.0	100.0	100.0	
42"	88.9		100.0	100.0	100.0	
48"	80.0		100.0	87.8	100.0	
24"	114"		100.0	100.0	100.0	100.0
30"			100.0	100.0	99.8	100.0
36"			84.2	100.0	99.8	100.0
42"		84.2	100.0	95.0	100.0	
48"		75.8	100.0	83.2	100.0	
24"		120"	96.0	100.0	100.0	100.0
30"			96.0	100.0	94.8	100.0
36"			80.0	100.0	94.8	100.0
42"	80.0		96.0	90.3	100.0	
48"	72.0		96.0	79.0	100.0	

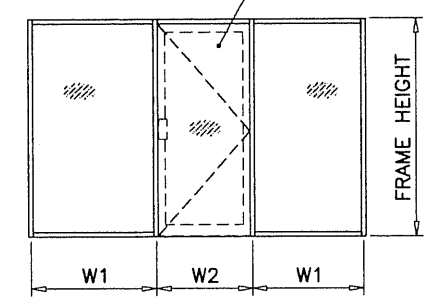


$$\text{WIDTH (W)} = \frac{W1 + W2}{2}$$



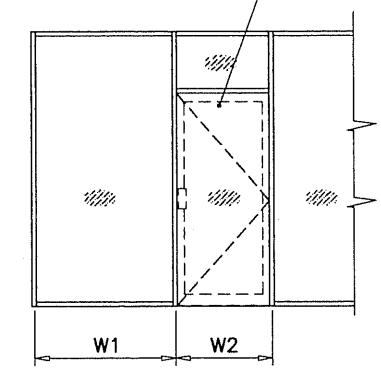
$$\text{WIDTH (W)} = \frac{W1 + W2}{2}$$

FRENCH DOORS
SEE SEPARATE NOA



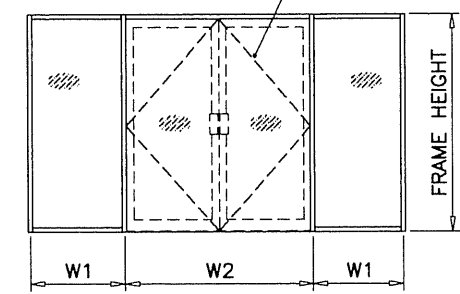
$$\text{WIDTH (W)} = \frac{W1 + W2}{2}$$

FRENCH DOORS
SEE SEPARATE NOA



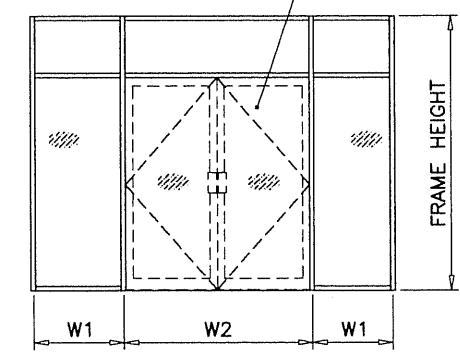
$$\text{WIDTH (W)} = \frac{W1 + W2}{2}$$

FRENCH DOORS
SEE SEPARATE NOA

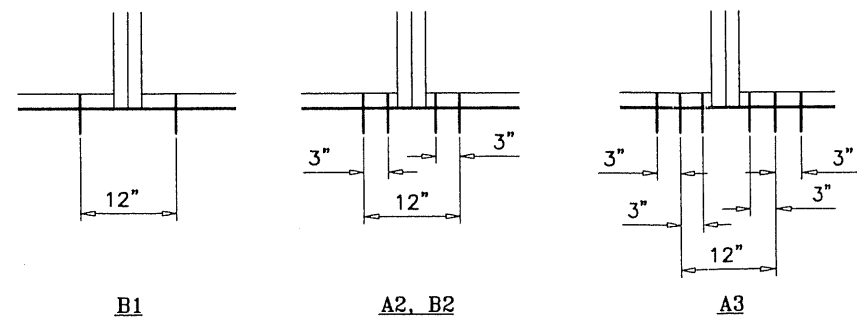


$$\text{WIDTH (W)} = \frac{W1}{2} + \frac{W2}{4}$$

FRENCH DOORS
SEE SEPARATE NOA



$$\text{WIDTH (W)} = \frac{W1 + W2}{2}$$



ANCHORS TYPES: SEE SHEET 5 FOR DESCRIPTION
 A2 = (2) ANCHORS TYPE 'A' AT EACH SIDE OF MULLION
 A3 = (3) ANCHORS TYPE 'A' AT EACH SIDE OF MULLION
 B1 = (1) ANCHOR TYPE 'B' AT EACH SIDE OF MULLION
 B2 = (2) ANCHORS TYPE 'B' AT EACH SIDE OF MULLION
 ALL OTHER ANCHORS TO BE SPACED AS PER ELEVATION.

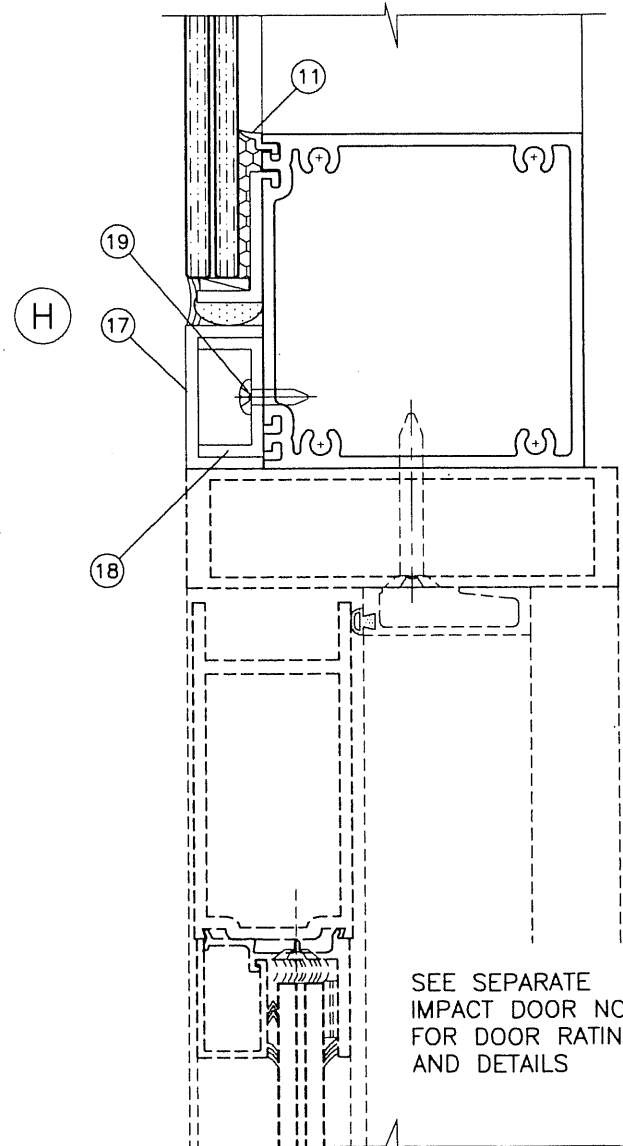
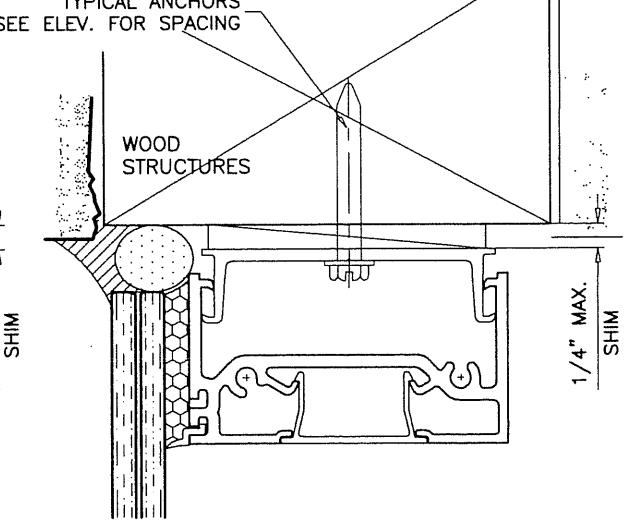
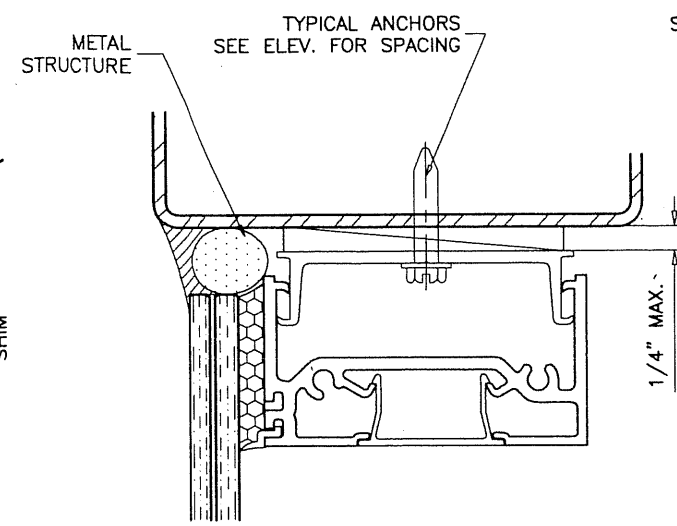
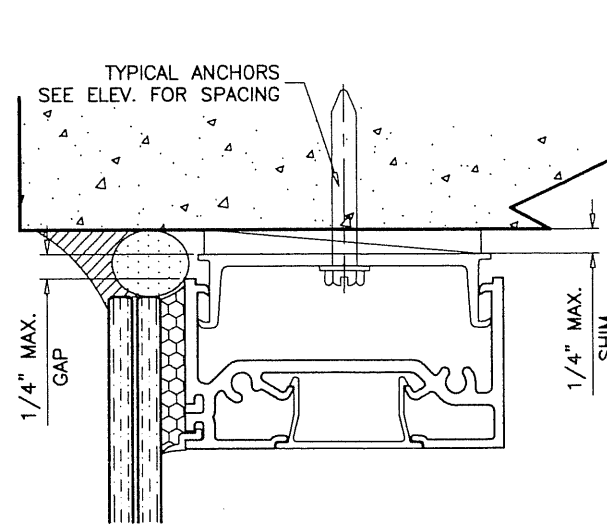
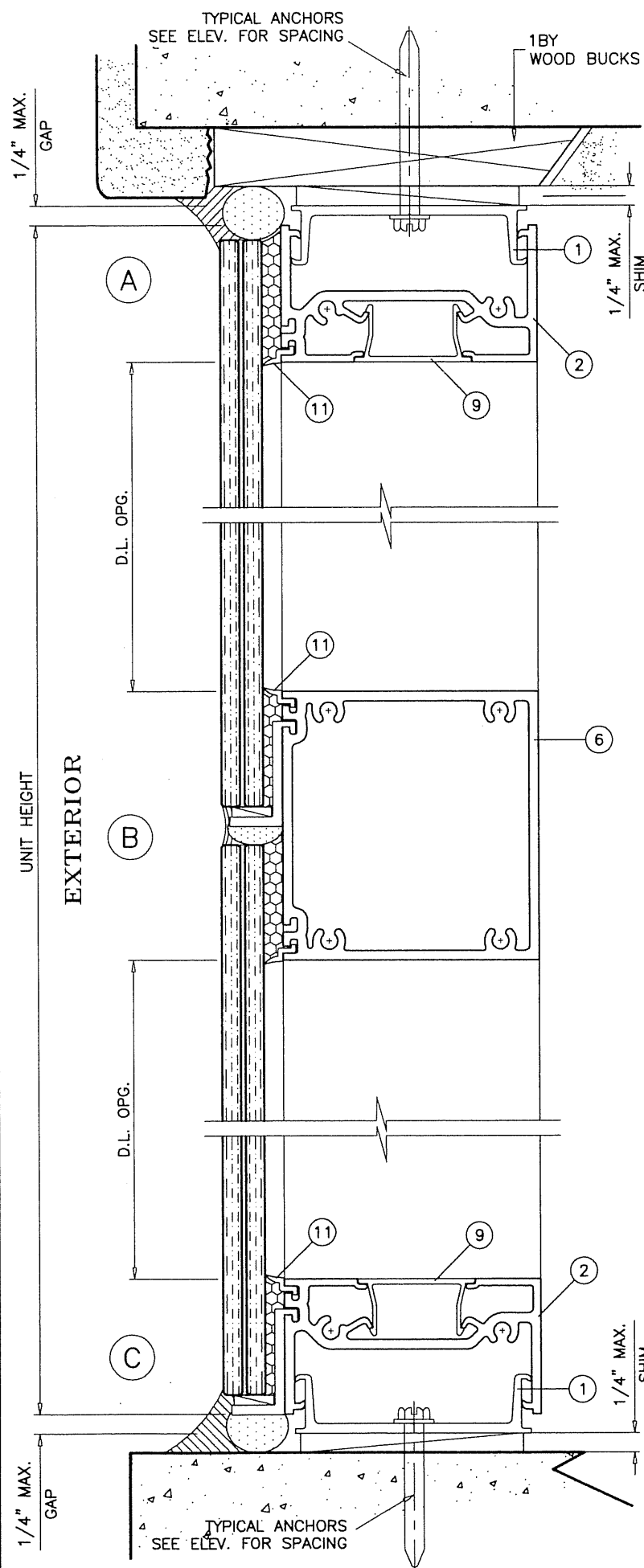
Engr. DR. HUMAYOON FAROOQ
 STRUCTURES
 F.I.A. PE # 16557
 C.A.N. 3538
 MAR 17 2008

PRODUCT REVISED
 in complying with the Florida
 Building Code
 Acceptance No. 08-0415-07
 Expiration Date 06/22/2011
 Dr. Manuel Perez
 Director, Product Control

AL-FAROOQ CORPORATION
 ENGINEERS & PRODUCT DEVELOPMENT
 1235 S.W. 87 AVE
 MIAMI, FLORIDA 33174
 TEL. (305) 264-8100 FAX. (305) 262-6978
 STORE W06-02CTC

PRO-TECH 45SG ALUM WINDOW WALL SYSTEM (S.M.I.)
CRAWFORD TRACEY CORPORATION
 3301 SW 13TH DRIVE
 DEERFIELD BEACH, FL. 33442-8101
 TEL. (954) 698-6888 FAX. (954) 698-6889

revisions:	by description	NO CHANGE THIS SHEET
no date		
A 02.27.08		
date: 01-05-06	scale: 1/2" = 1"	dr. by: HAMID
		chk. by:
drawing no. W06-02		
sheet 4 of 8		



SEE SEPARATE
IMPACT DOOR NOA
FOR DOOR RATING
AND DETAILS

WOOD BUCKS AND METAL STRUCTURES NOT BY CRAWFORD TRACEY
MUST SUPPORT LOADS IMPOSED BY GLAZING SYSTEM AND
TRANSFER THEM TO THE BUILDING STRUCTURE.

TYPICAL ANCHORS: SEE ELEV. FOR SPACING

TYPE 'A' - 1/4" TAPCONS

INTO 2BY WOOD BUCKS OR WOOD STRUCTURES
1-1/2" MIN. PENETRATION INTO WOOD

THRU 1BY WOOD BUCKS INTO
3000 PSI MIN. CONC. OR C-90 GROUT FILLED BLOCK
1-1/4" MIN. EMBED INTO CONC. OR MASONRY

TYPE 'B' - 1/4" TAPCONS

DIRECTLY INTO CONC. OR MASONRY
3000 PSI MIN. CONC. OR C-90 GROUT FILLED BLOCK
1-1/4" MIN. EMBED INTO CONC. OR MASONRY

1/4" TEKS OR SELF DRILLING SCREWS

INTO METAL STRUCTURES

STEEL : 12 GA. MIN. (Fy = 36 KSI MIN.)
ALUMINUM : 1/8" THK. MIN. (6063-T5 MIN.)
(STEEL IN CONTACT WITH ALUMINUM TO BE PLATED OR PAINTED)

TYPICAL EDGE DISTANCE

INTO CONCRETE AND MASONRY = 3" MIN.
INTO WOOD STRUCTURE = 1" MIN.
INTO METAL STRUCTURE = 3/4" MIN.

SEALANTS:

ALL FRAME JOINTS ON EXTERIOR TO BE SEALED WITH
DOW CORNING 795 SILICONE SEALANT.

Engr. DR. HUMAYOUN FAROOQ
STRUCTURES
FLA. PE # 15557
C.A.N. 3538

By *Manuel Perez*
MAR 17 2008

PRODUCT REVISED
in compliance with the Florida
Building Code
Acceptance No. **08-0415.07**
Expiration Date **06/22/2011**

By *Manuel Perez*
Miami Dade Product Control
Division

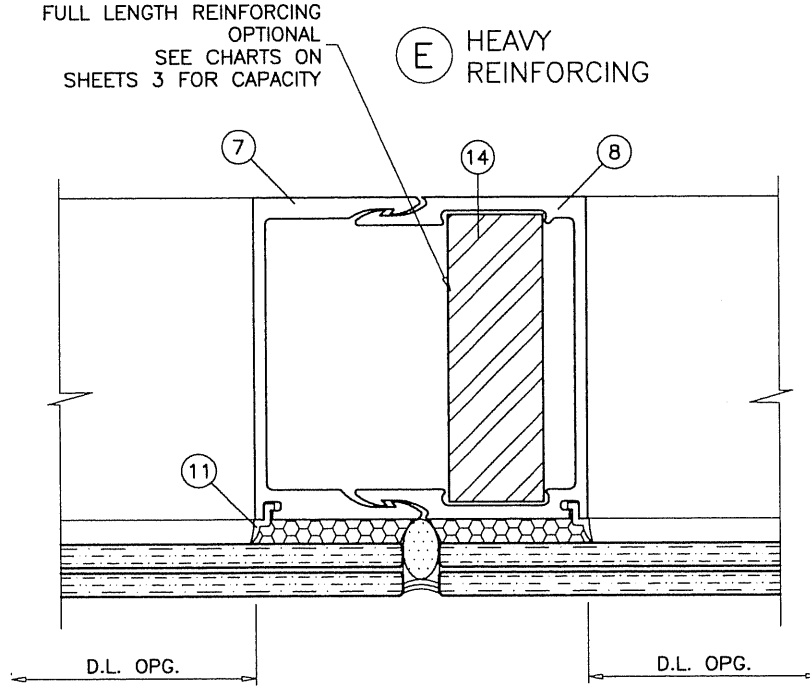
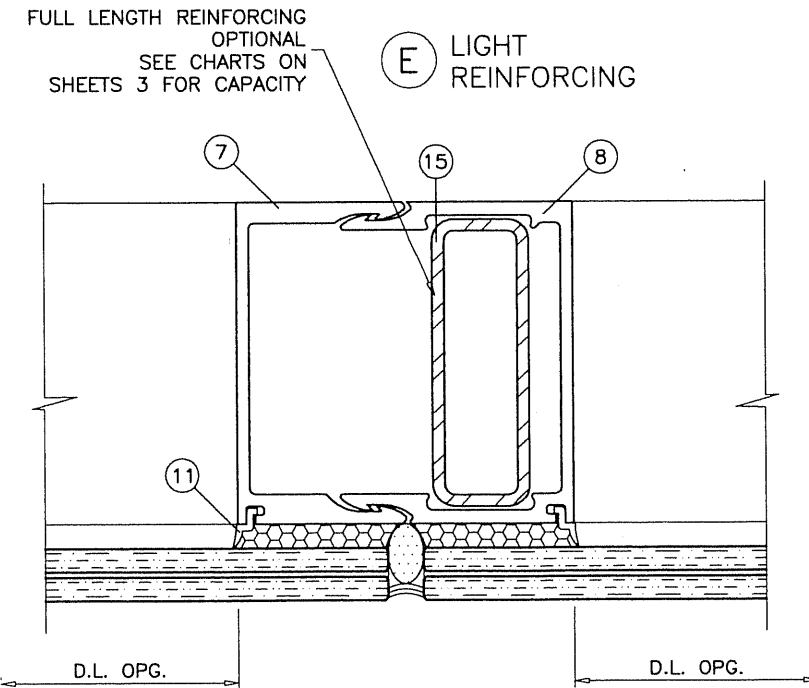
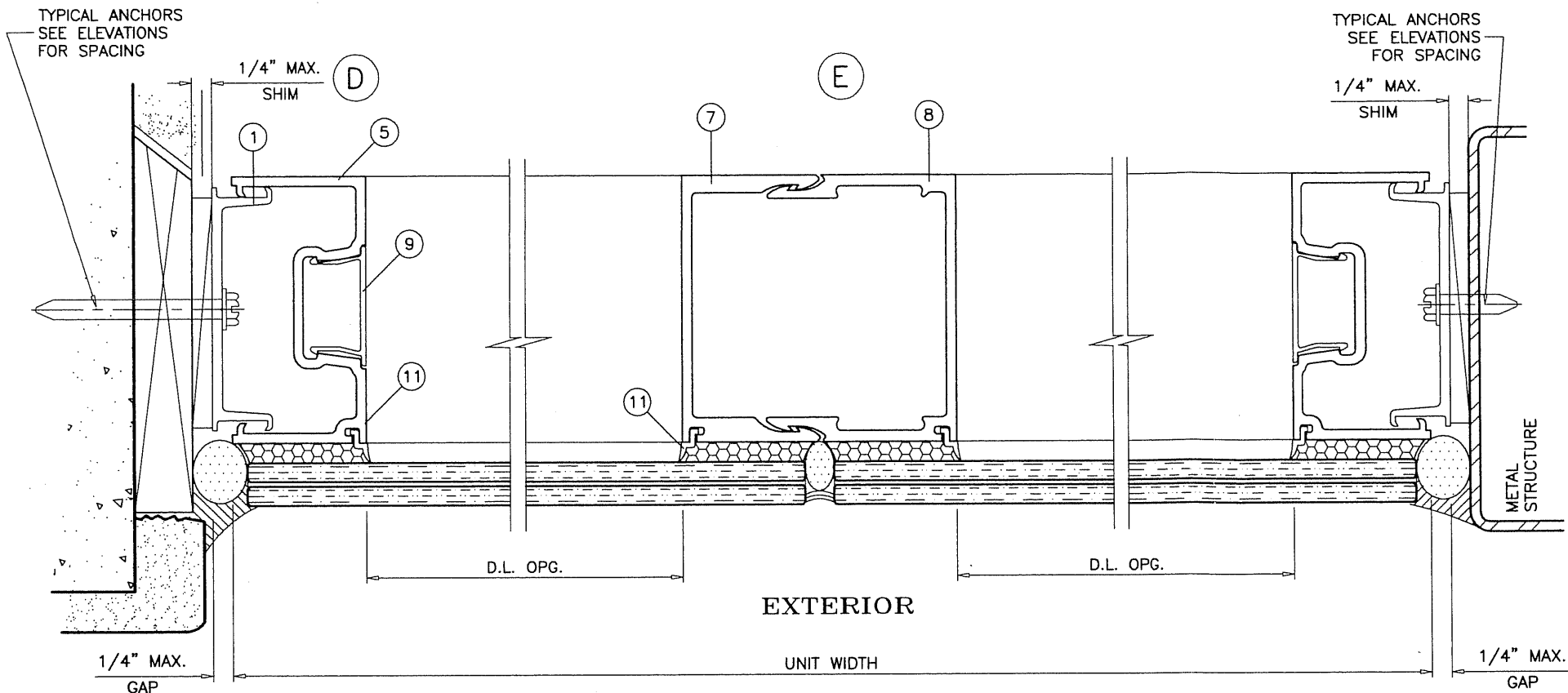
af c
AL-FAROOQ CORPORATION
ENGINEERS & PRODUCT DEVELOPMENT
1235 S.W. 87 AVE
MIAMI, FLORIDA 33174
TEL. (305) 264-8100 FAX. (305) 262-6978
STORE \W06-02CTC

PRO-TECH 45SG ALUM WINDOW WALL SYSTEM (S.M.I.)
CRAWFORD TRACEY CORPORATION
3301 SW 13TH DRIVE
DEERFIELD BEACH, FL. 33442-8101
TEL. (954) 698-6888 FAX. (954) 698-6889

revisions:	no	date	by	description
	A	02.27.08		NO CHANGE THIS SHEET

date: 01-05-06
scale: 1/2" = 1"
dr. by: HAMID
chk. by:

drawing no.
W06-02
sheet 5 of 8



Engr. DR. HUMAYOON FAROOQ
 STRUCTURES
 FLA. PE # 16557
 C.A.N. 3538

MAR 17 2006

PRODUCT REVISED
 as complying with the Florida
 Building Code
 Association No. **08-045.07**
 Expiration Date **06/22/2011**

By *Manuel Perez*
 Structural Engineer
 Professional Seal

afco

AL-FAROOQ CORPORATION
 ENGINEERS & PRODUCT DEVELOPMENT
 1235 S.W. 87 AVE
 MIAMI, FLORIDA 33174
 TEL. (305) 264-8100 FAX. (305) 262-6978
 STORE W06-02CTC

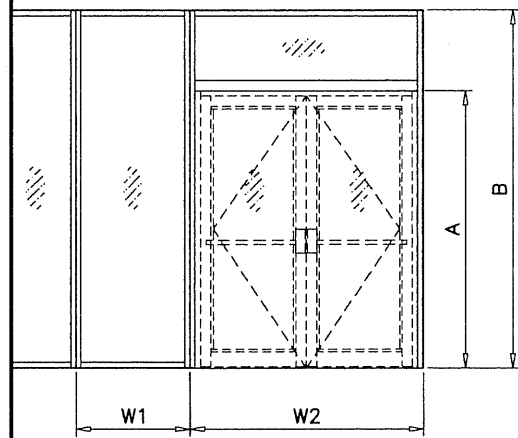
PRO-TECH 4SSG ALUM WINDOW WALL SYSTEM (S.M.I.)

CRAWFORD TRACEY CORPORATION
 3301 SW 13TH DRIVE
 DEERFIELD BEACH, FL. 33442-8101
 TEL. (954) 698-6888 FAX. (954) 698-6889

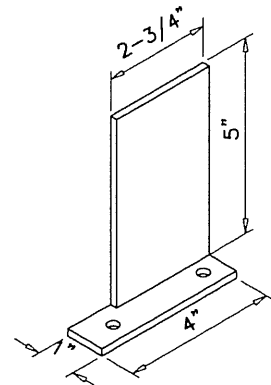
revisions:	no	date	by	description
	A	02.27.08		NO CHANGE THIS SHEET

date: 01-05-06
 scale: 1/2" = 1"
 dr. by: HAMID
 chk. by:

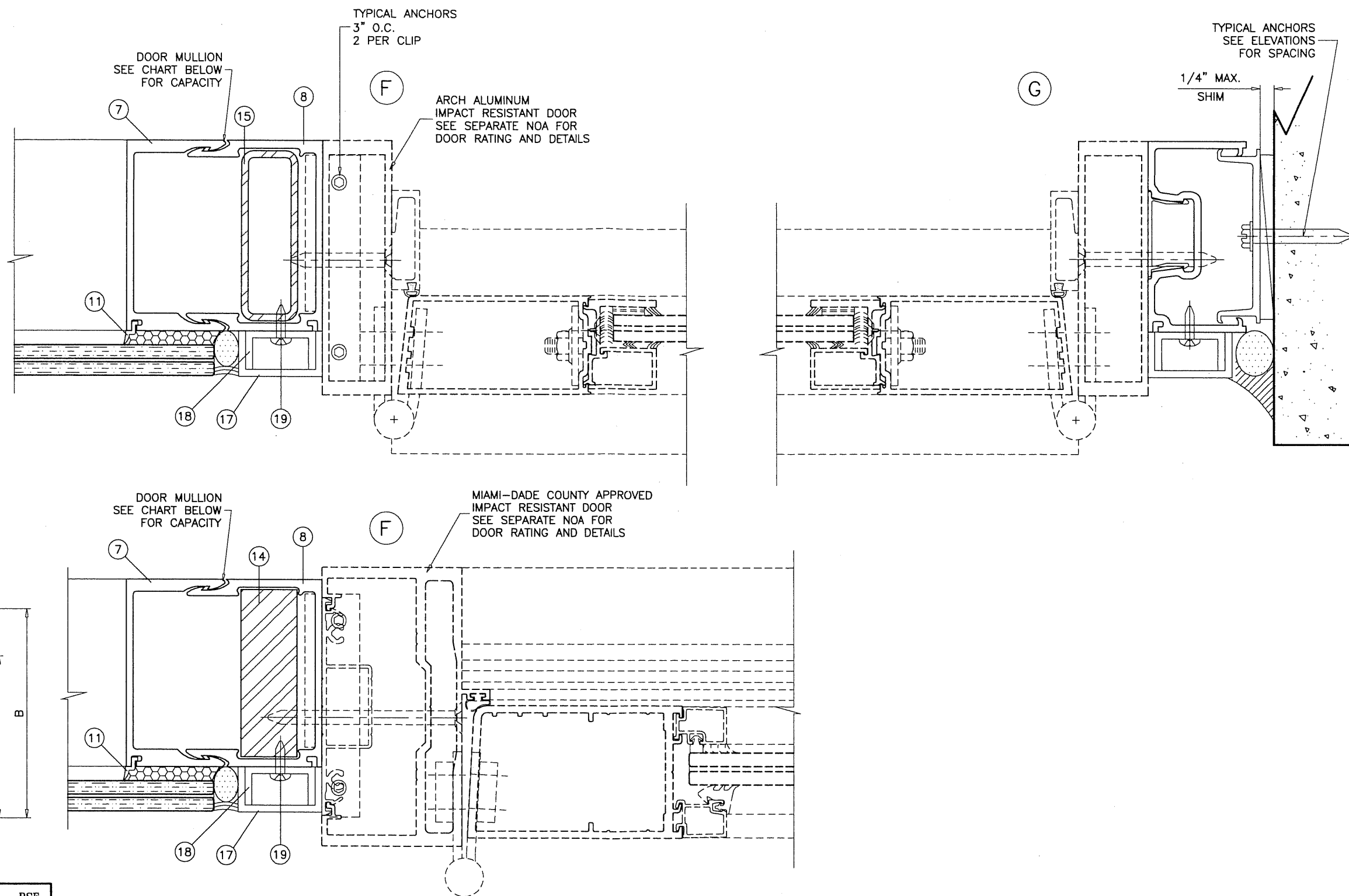
drawing no.
W06-02
 sheet 6 of 8



DOOR MULLION DESIGN LOAD CAPACITY - PSF				
FRAME HEIGHT-B INCHES MAX.	DOOR HEIGHT-A INCHES MAX.	WIDTH-W1 INCHES MAX.	WIDTH-W2 INCHES MAX.	EXT. (+) INT. (-)
120	96	36	72	70.1
	90			66.1
	84			62.0
	80			59.4
114	96	42	72	80.0
	90			68.5
108	96	48	72	80.0
	90			80.0
102	96	54	72	80.0
	90			80.0



DOOR MULLION INSTALLATION CLIP
1 X 5 X 3/16" ALUM ANGLE



af c
AL-FAROOQ CORPORATION
 ENGINEERS & PRODUCT DEVELOPMENT
 1235 S.W. 87 AVE
 MIAMI, FLORIDA 33174
 TEL. (305) 264-8100 FAX. (305) 262-6978
 STORE\W06-02CTC

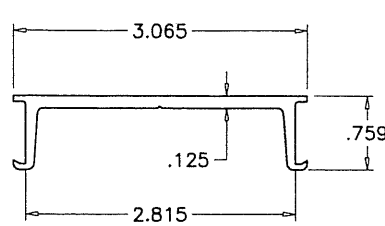
PRO-TECH 45SG ALUM WINDOW WALL SYSTEM (S.M.I.)
CRAWFORD TRACEY CORPORATION
 3301 SW 13TH DRIVE
 DEERFIELD BEACH, FL. 33442-8101
 TEL. (954) 698-6888 FAX. (954) 698-6889

no	date	by	description
A	02.27.08		NO CHANGE THIS SHEET

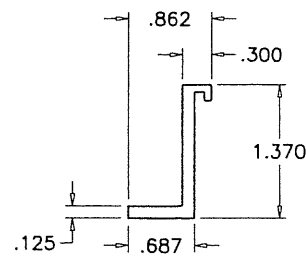
date: 01-05-06
 scale: 1/2" = 1"
 dr. by: HAMID
 chk. by:

Engr. DR. HUMAYOUN FAROOQ
 STRUCTURES
 FLA. PE # 16557
 C.A.N. 3538
 MAR 17 2008

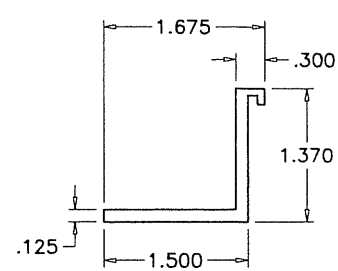
PRODUCT REVISED
 in complying with the Florida
 Building Code
 Acceptance No. **08-0415.07**
 Expiration Date **06/22/2011**
 By: *Manuel P...*
 Miami/Dade Product Control
 Division



① SUB BUCK

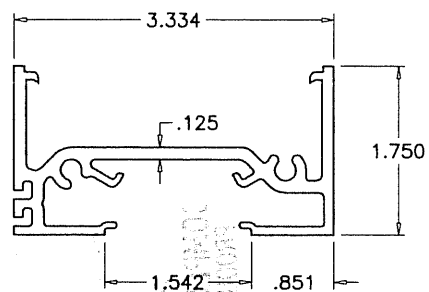


⑩ SETTING PIECE LAM. GLASS

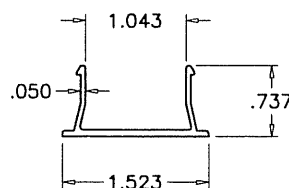


⑩A SETTING PIECE INSUL. LAM. GLASS

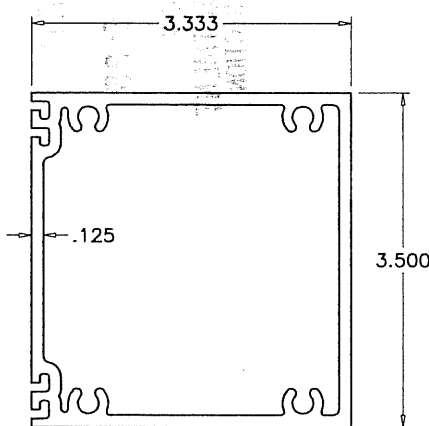
ITEM NO.	PART NUMBER	QUANTITY	DESCRIPTION	MATERIAL	MANF./SUPPLIER/REMARKS
1	B44B001	AS REQD.	SUB BUCK	6105-T5	-
2	144P176	AS REQD.	FRAME HEAD/SILL	6063-T6	-
5	144J176	AS REQD.	FRAME JAMB	6063-T6	-
6	144H342	AS REQD.	HORIZONTAL	6063-T6	-
7	144M114	AS REQD.	FEMALE MULLION	6063-T6	-
8	144M113	AS REQD.	MALE MULLION	6063-T6	-
9	T44U119	AS REQD.	SNAP-IN COVER	6063-T6	-
10	170X115	AS REQD.	4" LONG SETTING PIECE (LAM. GLASS)	6105-T5	AT 1/4 POINTS
10A	170X116	AS REQD.	4" LONG SETTING PIECE (INSUL. LAM. GLASS)	6105-T5	AT 1/4 POINTS
11	#2	AS REQD.	INTERIOR GLAZING GASKET	POLYPROPYLENE	-
12	-	-	-	-	-
13	983	-	GLAZING COMPOUND	SILICONE	DOW CORNING
14	-	AS REQD.	STEEL BAR, FULL LENGTH	STEEL	1" X 3"
15	-	AS REQD.	REINFORCING TUBE, FULL LENGTH	STEEL	1 X 3 X 11 GA.
16	#14 X 1-1/4"	AS REQD.	FRAME ASSEMBLY SCREWS	ST. STEEL	P.H. SMS
17	-	AS REQD.	FILLER CHANNEL	ALUMINUM	13/16 X 1-1/2 X 13/16 X 1/8"
18	-	AS REQD.	FILLER CHANNEL	ALUMINUM	11/16 X 1-1/4 X 11/16 X 1/8"
19	#10 X 1"	AS REQD.	FILLER CHANNEL SCREWS	AT. STEEL	AT 14" O.C.



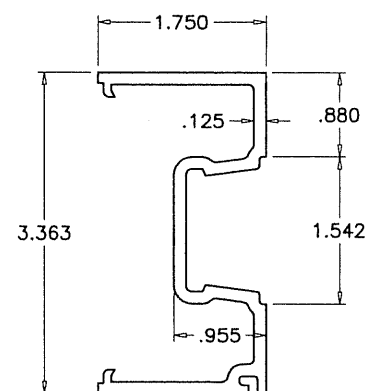
② FRAME HEAD/SILL



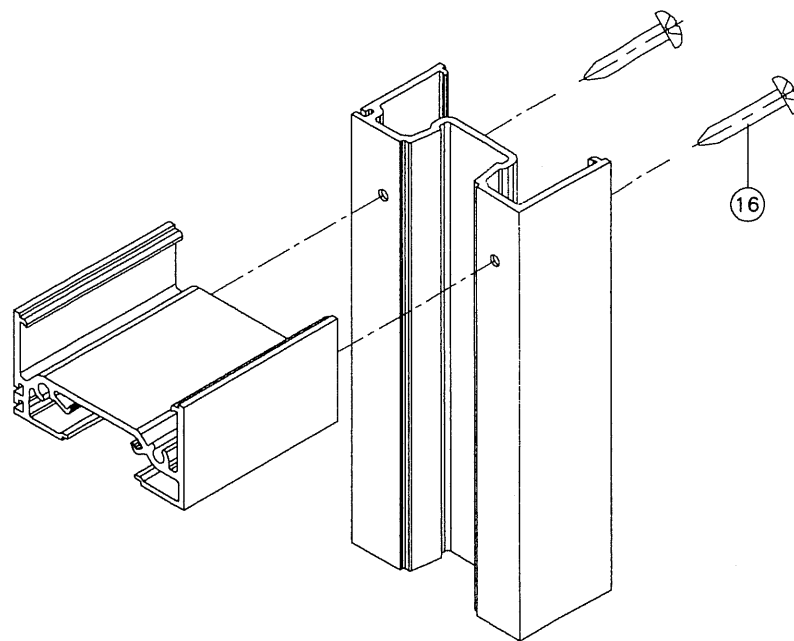
⑨ SNAP-IN COVER



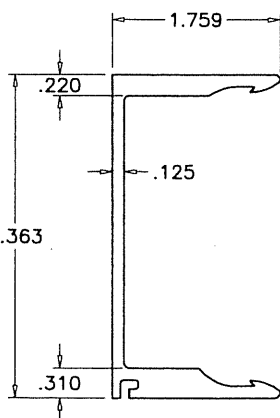
⑥ FRAME HORIZONTAL



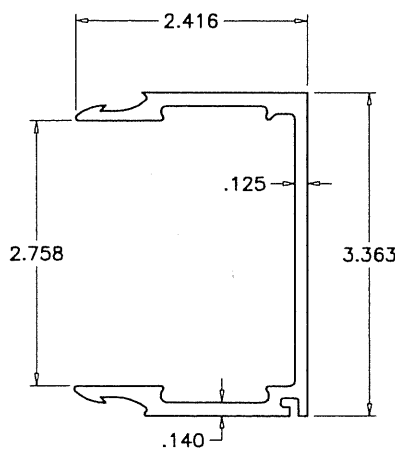
⑤ FRAME JAMB



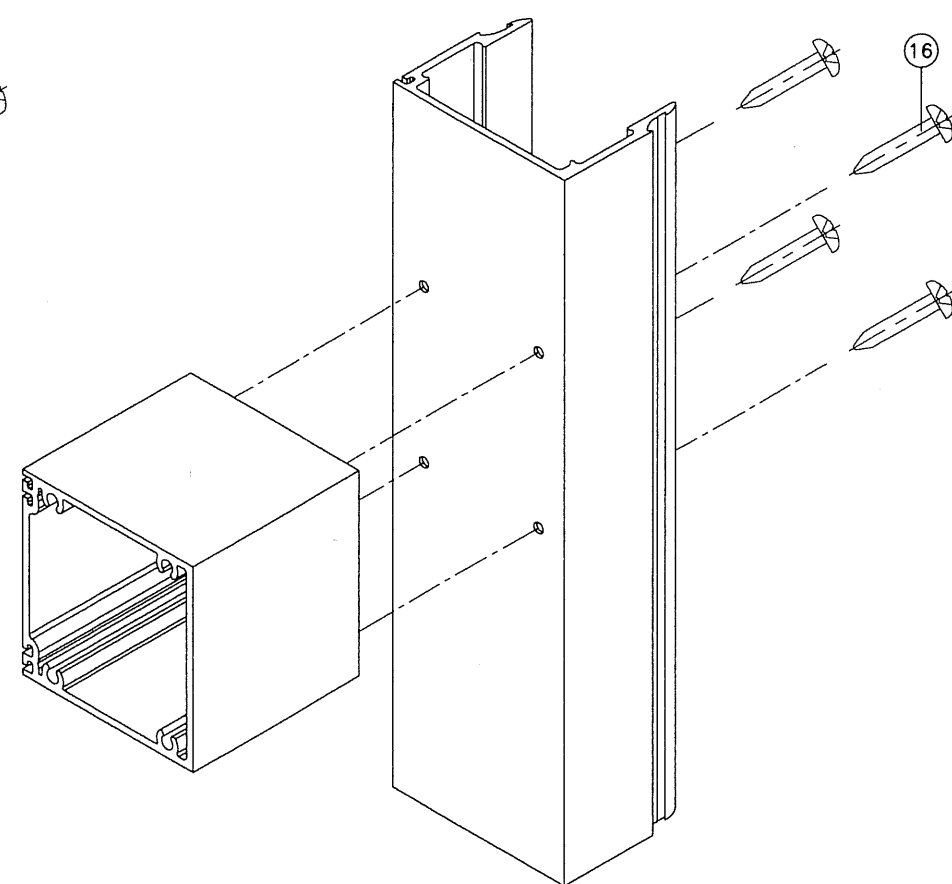
FRAME TOP/BOTTOM CORNER



⑦ FEMALE MULLION



⑧ MALE MULLION



FRAME HORIZONTAL CORNER

Engr: DR. HUMAYOUN FAROOQ
STRUCTURES
FLA. PE # 16557
C.A.N. 3538

PRODUCT REVISED
as complying with the Florida
Building Code
Acceptance No. 08-0415.07
Expiration Date 06/22/2011

by *Manuel Perez*
MAR 17 2008

PRO-TECH 45SG ALUM WINDOW WALL SYSTEM (S.M.I.)
CRAWFORD TRACEY CORPORATION
3301 SW 13TH DRIVE
DEERFIELD BEACH, FL. 33442-8101
TEL. (954) 698-6888 FAX. (954) 698-6889

AL-FAROOQ CORPORATION
ENGINEERS & PRODUCT DEVELOPMENT
1235 S.W. 87 AVE
MIAMI, FLORIDA 33174
TEL. (305) 264-8100 FAX. (305) 262-6978
STORE \W06-02CTC

revisions:	no.	date	by	description
	A	02.27.08		SETTING PIECE ADDED

date: 01-05-06
scale: 1/2" = 1"
dr. by: HAMID
chk. by:

drawing no.
W06-02
sheet 8 of 8