



**MIAMI-DADE COUNTY**  
**BUILDING AND NEIGHBORHOOD COMPLIANCE DEPARTMENT (BNC)**  
**BOARD AND CODE ADMINISTRATION DIVISION**

**MIAMI-DADE COUNTY, FLORIDA**  
**PRODUCT CONTROL SECTION**  
 11805 SW 26<sup>th</sup> Street, Room 208  
 Miami, Florida 33175-2474  
 T (786) 315-2590 F (786) 315-2599

**NOTICE OF ACCEPTANCE (NOA)**

[www.miamidade.gov/building](http://www.miamidade.gov/building)

**Crawford Tracey Corporation**  
**3301 SW 13<sup>th</sup> Drive**  
**Deerfield Beach, FL 33442**

**SCOPE:**

This NOA is being issued under the applicable rules and regulations governing the use of construction materials. The documentation submitted has been reviewed and accepted by Miami-Dade County BNC-Product Control Section to be used in Miami-Dade County and other areas where allowed by the Authority Having Jurisdiction (AHJ).

This NOA shall not be valid after the expiration date stated below. The Miami-Dade County Product Control Section (In Miami-Dade County) and/or the AHJ (in areas other than Miami-Dade County) reserve the right to have this product or material tested for quality assurance purposes. If this product or material fails to perform in the accepted manner, the manufacturer will incur the expense of such testing and the AHJ may immediately revoke, modify, or suspend the use of such product or material within their jurisdiction. BNC reserves the right to revoke this acceptance, if it is determined by Miami-Dade County Product Control Section that this product or material fails to meet the requirements of the applicable building code.

This product is approved as described herein, and has been designed to comply with the Florida Building Code, including the High Velocity Hurricane Zone.

**DESCRIPTION: Series "Pro-Tech 45SG" Aluminum Window Wall System – L.M.I.**

**APPROVAL DOCUMENT:** Drawing No. **W05-31**, titled "Pro-Tech 45SG Alum. Window Wall System (L.M.I.)", sheets 1 through 8 of 8, dated 06/24/05 with revision "C" dated 03/21/11, prepared by Al-Farooq Corporation, signed and sealed by Javad Ahmad, P. E., bearing the Miami-Dade County Product Control Revision stamp with the Notice of Acceptance number and Expiration date by the Miami-Dade County Product Control Section.

**MISSILE IMPACT RATING: Large and Small Missile Impact Resistant.**

**LABELING:** Each unit shall bear a permanent label with the manufacturer's name or logo, city, state, model/ series and following statement: "Miami-Dade County Product Control Approved" unless otherwise noted herein.

**RENEWAL** of this NOA shall be considered after a renewal application has been filed and there has been no change in the applicable building code negatively affecting the performance of this product.

**TERMINATION** of this NOA will occur after the expiration date or if there has been a revision or change in the materials, use, and/or manufacture of the product or process. Misuse of this NOA as an endorsement of any product, for sales, advertising or any other purposes shall automatically terminate this NOA. Failure to comply with any section of this NOA shall be cause for termination and removal of NOA.

**ADVERTISEMENT:** The NOA number preceded by the words Miami-Dade County, Florida, and followed by the expiration date may be displayed in advertising literature. If any portion of the NOA is displayed, then it shall be done in its entirety.

**INSPECTION:** A copy of this entire NOA shall be provided to the user by the manufacturer or its distributors and shall be available for inspection at the job site at the request of the Building Official. This NOA **revises and renews NOA No. 08-0415.08** and consists of this page 1, evidence pages E-1 and E-2, as well as approval document mentioned above.

The submitted documentation was reviewed by **Jaime D. Gascon, P. E.**



*J. Gascon.*  
*4/7/11.*

**NOA No. 10-1213.12**  
**Expiration Date: June 22, 2016**  
**Approval Date: April 14, 2011**  
 Page 1

Crawford Tracey Corporation

NOTICE OF ACCEPTANCE: EVIDENCE SUBMITTED

**A. DRAWINGS**

1. Manufacturer's die drawings and sections.
2. Drawing No **W05-31**, titled "Pro-Tech 45SG Alum. Window Wall System (L.M.I.)", sheets 1 through 8 of 8, dated 06/24/05 with revision "C" dated 03/21/11, prepared by Al-Farooq Corporation, signed and sealed by Javad Ahmad, P. E.

**B. TESTS**

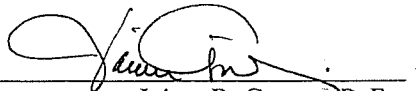
1. Test reports on:
  - 1) Air Infiltration Test, per FBC, TAS 202-94
  - 2) Uniform Static Air Pressure Test, Loading per FBC TAS 202-94
  - 3) Water Resistance Test, per FBC, TAS 202-94
  - 4) Large Missile Impact Test per FBC, TAS 201-94
  - 5) Small Missile Impact Test per FBC, TAS 201-94
  - 6) Cyclic Wind Pressure Loading per FBC, TAS 203-94along with marked-up drawings and installation diagram of a series 45SG aluminum window wall system, prepared by American Test Lab of South Florida, Test Report No. **ATLSF-1129-01-07**, dated 01/29/08, signed and sealed by Henry Hattem, P. E.  
*(Submitted under previous NOA No.08-0415.08)*
2. Test reports on:
  - 1) Air Infiltration Test, per FBC, TAS 202-94
  - 2) Uniform Static Air Pressure Test, Loading per FBC TAS 202-94
  - 3) Water Resistance Test, per FBC, TAS 202-94
  - 4) large Missile Impact Test per FBC, TAS 201-94
  - 5) Cyclic Wind Pressure Loading per FBC, TAS 203-94along with marked-up drawings and installation diagram of a Pro-Tech 45SG – SMI, aluminum window wall system, prepared by American Test Lab of South Florida, Test Report No. **ATLSF-0310.01-05** dates 06/01/05, signed and sealed by Henry Hattem, P. E.  
*(Submitted under previous NOA No.06-0119.10)*

**C. CALCULATIONS**

1. Anchor verification calculations and structural analysis, complying with FBC-2007, prepared by Al-Farooq Corporation, dated 11/24/10, signed, sealed and dated 03/29/11 by Javad Ahmad, P. E.  
**Complies with ASTM E1300-02/ 04**

**D. QUALITY ASSURANCE**

1. Miami-Dade Building and Neighborhood Compliance Department (BNC).



---

Jaime D. Gascon, P. E.

Product Control Section Supervisor

NOA No. 10-1213.12

Expiration Date: June 22, 2016

Approval Date: April 14, 2011

Crawford Tracey Corporation

NOTICE OF ACCEPTANCE: EVIDENCE SUBMITTED

**E. MATERIAL CERTIFICATIONS**

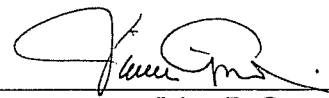
1. Notice of Acceptance No. **10-0413.04** issued to E.I. DuPont DeNemours & Co., Inc. for their “**DuPont Sentry Glass® Interlayer**” dated 05/26/2010, expiring on 01/14/12.
2. Notice of Acceptance No. **08-0206.01** issued to Solutia Inc. for their “**Saflex HP Glass Interlayer**” dated 04/17/2008, expiring on 04/17/2013.
3. Notice of Acceptance No. **08-0520.08** issued to Solutia Inc. for their “**Vanceva Composites Glass Interlayer**” dated 7/17/08, expiring on 12/11/13.

**F. STATEMENTS**

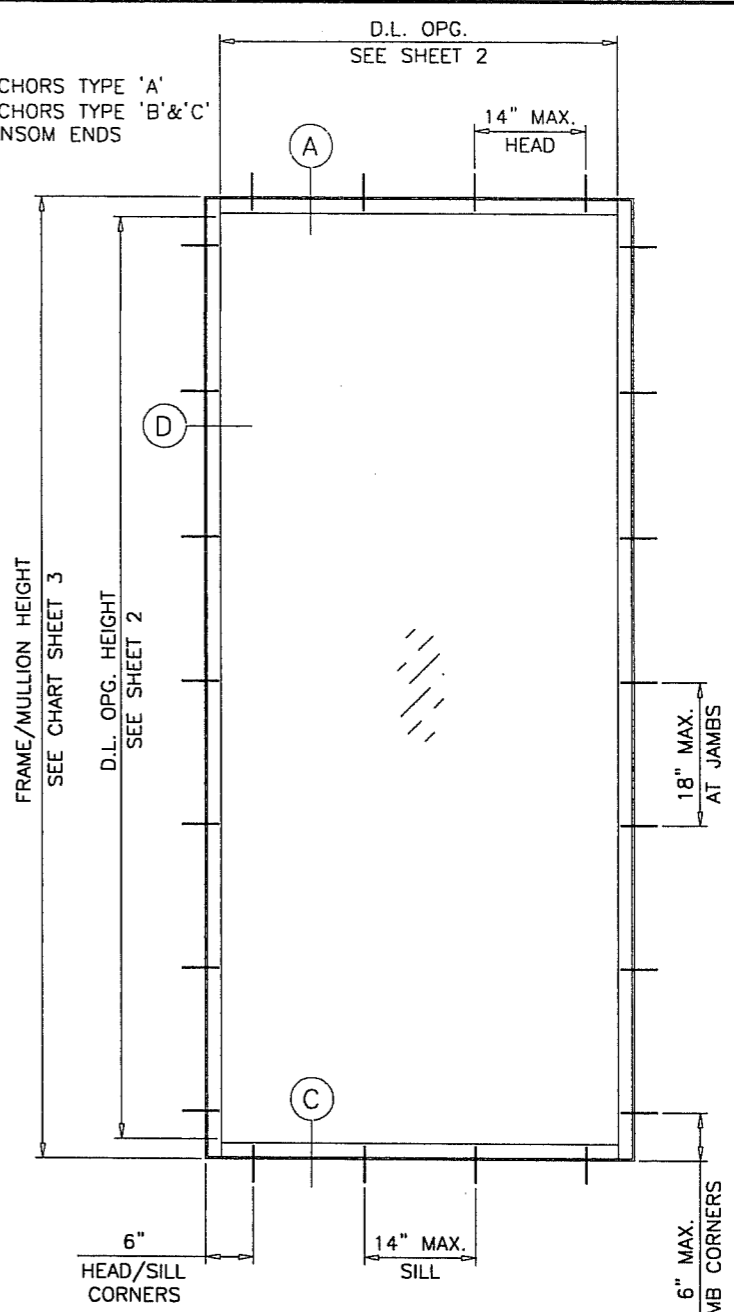
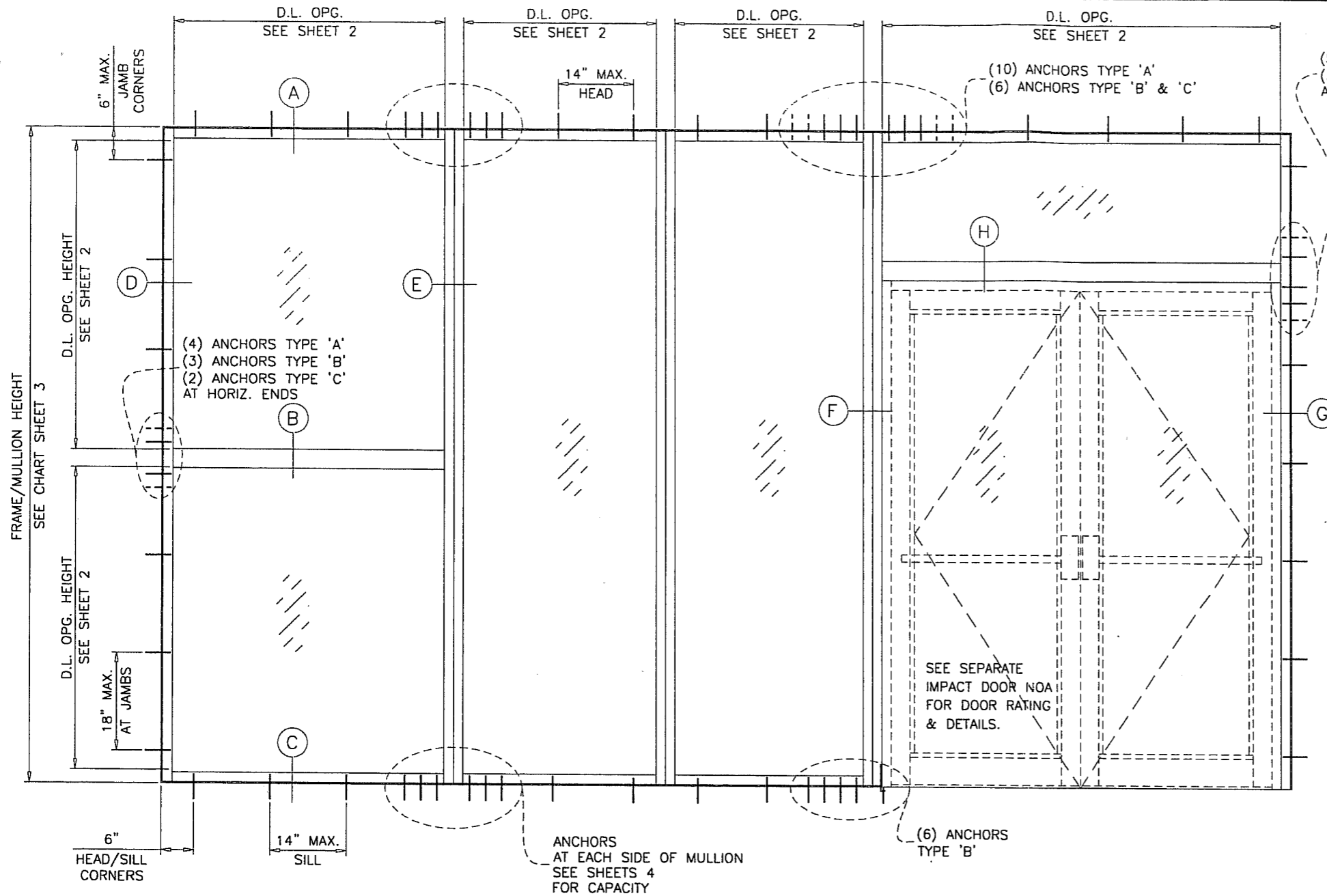
1. Statement letter of no financial interest, conformance and compliance with the FBC-2007, dated 11/24/10, signed and sealed by Javad Ahmad, P. E.
2. Laboratory compliance letter for Test Report No. **ATLSF-1129-01-07**, issued by American Test Lab of South Florida, Inc., dated 01/29/08, signed and sealed by Henry Hattem, P. E.  
*(Submitted under previous NOA No.08-0415.08)*
3. Laboratory compliance letter for Test Report No. **ATLSF-0310.01-05**, issued by American Test Lab of South Florida, Inc., dated 06/01/05, signed and sealed by Henry Hattem, P. E.  
*(Submitted under previous NOA No. 06-0119.10)*

**G. OTHERS**

1. Notice of Acceptance No. **08-0415.08**, issued to Crawford Tracey Corporation for their Series “**Pro-Tech 45SG Aluminum Window Wall System – L.M.I.**”, approved on 05/22/08 and expiring on 06/22/11.



Jaime D. Gascon, P. E.  
Product Control Section Supervisor  
NOA No. 10-1213.12  
Expiration Date: June 22, 2016  
Approval Date: April 14, 2011



TYPICAL ELEVATIONS

THIS SYSTEM IS RATED FOR LARGE MISSILE IMPACT. SHUTTERS ARE NOT REQUIRED.

**PRO-TECH 45SG ALUM WINDOW WALL SYSTEM**

THIS SYSTEM MAY BE USED IN CONJUNCTION WITH MIAMI-DADE COUNTY APPR'D LARGE MISSILE IMPACT RESISTANT DOORS. LOWER DESIGN PRESSURE FROM WINDOW WALL SYSTEM OR DOOR APPROVAL WILL APPLY TO ENTIRE SYSTEM.

CODE REQUIREMENTS FOR SAFEGUARDS MUST BE OBSERVED.

THIS PRODUCT HAS BEEN DESIGNED AND TESTED TO COMPLY WITH THE REQUIREMENTS OF THE FLORIDA BUILDING CODE 2007 EDITION INCLUDING HIGH VELOCITY HURRICANE ZONE (HVHZ).

WOOD BUCKS BY OTHERS, MUST BE ANCHORED PROPERLY TO TRANSFER LOADS TO THE STRUCTURE.

ANCHORS SHALL BE AS LISTED, SPACED AS SHOWN ON DETAILS, ANCHORS EMBEDMENT TO BASE MATERIAL SHALL BE BEYOND WALL DRESSING OR STUCCO.

ANCHORING OR LOADING CONDITIONS NOT SHOWN IN THESE DETAILS ARE NOT PART OF THIS APPROVAL.

A LOAD DURATION INCREASE IS USED IN DESIGN OF ANCHORS INTO WOOD ONLY.

MATERIALS INCLUDING BUT NOT LIMITED TO STEEL/METAL SCREWS, THAT COME INTO CONTACT WITH OTHER DISSIMILAR MATERIALS SHALL MEET THE REQUIREMENTS OF 2007 FLORIDA BLDG. CODE SECTION 2003.8.4.

**INSTRUCTIONS:**

USE CHARTS AS FOLLOWS.

- STEP 1** DETERMINE DESIGN WIND LOAD REQUIREMENTS BASED ON WIND VELOCITY, BLDG. HEIGHT, WIND ZONE USING APPLICABLE ASCE 7 STANDARD.
- STEP 2** SEE CHARTS ON SHEETS 2 FOR DESIGN LOAD CAPACITY OF DESIRED GLASS SIZE.
- STEP 3** CHECK MULLION CAPACITY FOR A GIVEN SPACING AND HEIGHT USING CHARTS ON SHEET 3 THE CAPACITY SHOULD EXCEED THE DESIGN LOAD.
- STEP 4** USING CHART ON SHEETS 4 SELECT ANCHOR OPTION WITH DESIGN RATING MORE THAN DESIGN LOAD SPECIFIED IN STEP 1 ABOVE.
- STEP 5** THE LOWEST VALUE RESULTING FROM STEPS 2, 3 AND 4 SHALL APPLY TO ENTIRE SYSTEM.

LAMINATED GLASS  
LARGE MISSILE IMPACT

Engr: JAVAD AHMAD  
CIVIL  
FLA. PE # 70592  
C.A.N. 3538

MAR 29 2011

PRODUCT REVISED  
as complying with the Florida  
Building Code  
Acceptance No 10-1213-12  
Expiration Date 06/22/2016  
By [Signature]  
Miami Dade Product Control

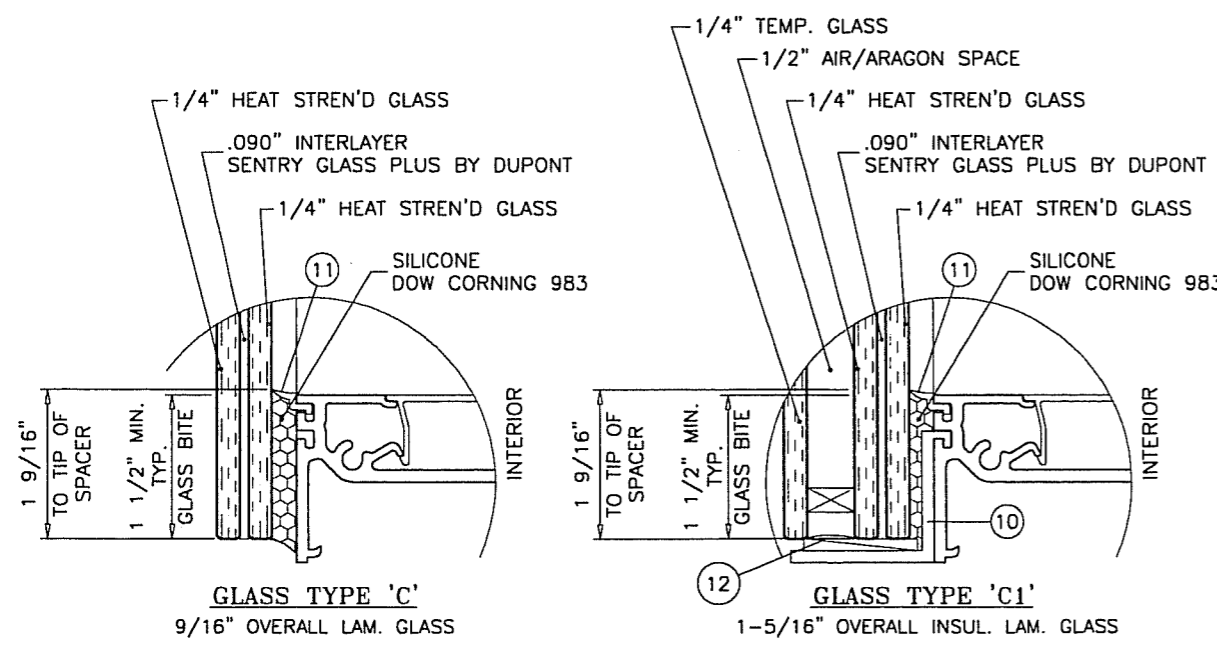
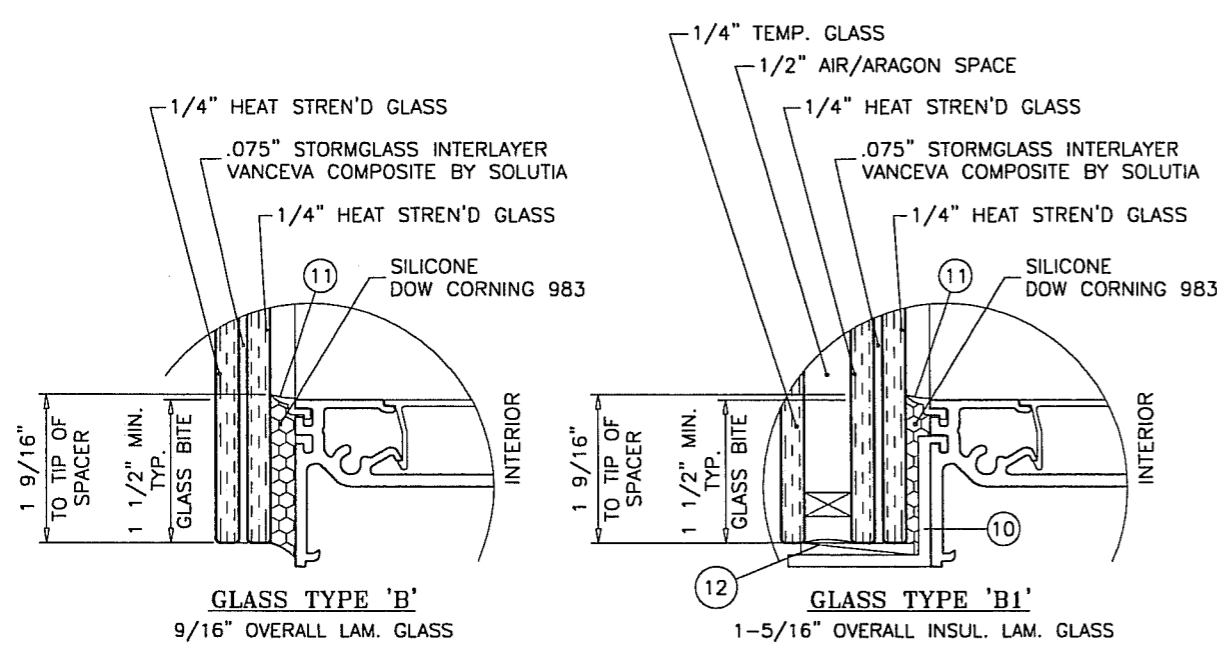
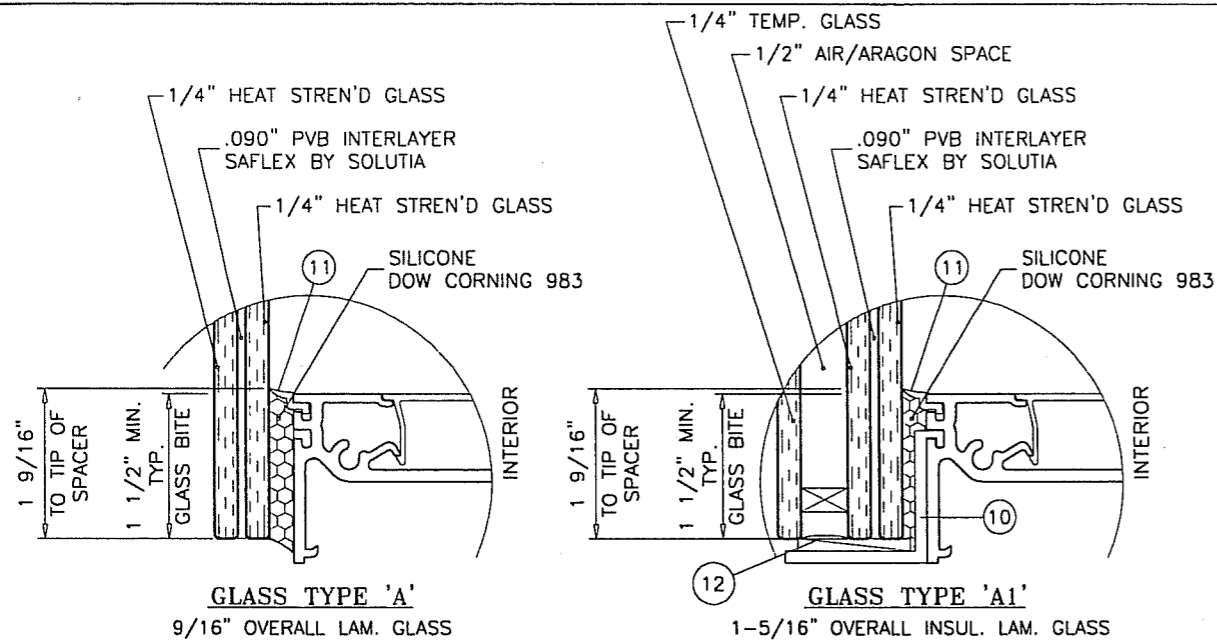
no	date	by	description
A	02.27.08	NOTES REV.	
B	11.29.10	GENERAL REVISION	
C	03.21.11	NO CHANGE THIS SHEET	

date: 06-24-05  
scale: 1/2"=1'-0"  
dr. by: HAMID  
chk. by:

drawing no.  
**W05-31**  
sheet 1 of 8

**af c**  
**AL-FAROOQ CORPORATION**  
ENGINEERS & PRODUCT DEVELOPMENT  
1235 S.W. 87 AVE  
MIAMI, FLORIDA 33174  
TEL. (305) 264-8100 FAX. (305) 262-6978  
STORE\W05-31CTC

PRO-TECH 45SG ALUM WINDOW WALL SYSTEM (L.M.I.)  
**CRAWFORD TRACEY CORPORATION**  
3301 SW 13TH DRIVE  
DEERFIELD BEACH, FL. 33442-8101  
TEL. (954) 698-6888 FAX. (954) 698-6889

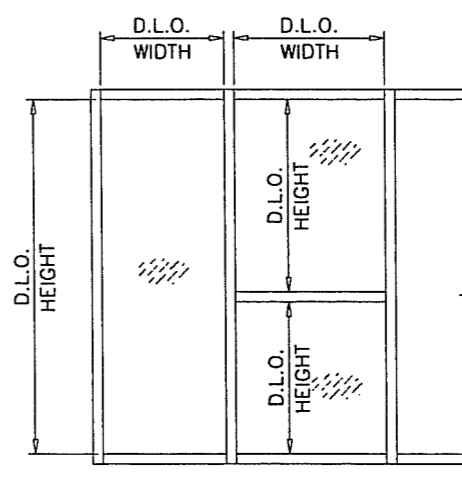


**GLAZING OPTIONS**

GLASS LOAD CAPACITY - PSF				
NOMINAL DIMS.		GLASS TYPE 'A' & 'AI'	GLASS TYPE 'B' & 'C'	GLASS TYPE 'BI' & 'CI'
D.L.O. WIDTH	D.L.O. HEIGHT	EXT. (+) INT. (-)	EXT. (+) INT. (-)	EXT. (+) INT. (-)
24"	54"	80.0	100.0	100.0
30"		80.0	100.0	100.0
36"		80.0	100.0	100.0
42"		80.0	100.0	100.0
48"		80.0	100.0	100.0
54"		80.0	100.0	100.0
60"		80.0	100.0	100.0
66"		80.0	100.0	100.0
72"	80.0	100.0	100.0	
24"	60"	80.0	100.0	100.0
30"		80.0	100.0	100.0
36"		80.0	100.0	100.0
42"		80.0	100.0	100.0
48"		80.0	100.0	100.0
54"		80.0	100.0	100.0
60"		80.0	100.0	100.0
66"		80.0	100.0	100.0
72"	80.0	100.0	100.0	
24"	66"	80.0	100.0	100.0
30"		80.0	100.0	100.0
36"		80.0	100.0	100.0
42"		80.0	100.0	100.0
48"		80.0	100.0	100.0
54"		80.0	100.0	100.0
60"		80.0	100.0	100.0
66"		80.0	100.0	100.0
72"	80.0	100.0	100.0	
24"	72"	80.0	100.0	100.0
30"		80.0	100.0	100.0
36"		80.0	100.0	100.0
42"		80.0	100.0	100.0
48"		80.0	100.0	100.0
54"		80.0	100.0	100.0
60"		80.0	100.0	100.0
66"		80.0	100.0	100.0
72"	80.0	100.0	100.0	
24"	78"	80.0	100.0	100.0
30"		80.0	100.0	100.0
36"		80.0	100.0	100.0
42"		80.0	100.0	100.0
48"		80.0	100.0	100.0
54"		80.0	100.0	100.0
60"		80.0	100.0	100.0
66"		80.0	100.0	100.0
72"	80.0	100.0	100.0	
24"	84"	80.0	100.0	100.0
30"		80.0	100.0	100.0
36"		80.0	100.0	100.0
42"		80.0	100.0	100.0
48"		80.0	100.0	100.0
54"		80.0	100.0	100.0
60"		80.0	100.0	100.0
66"		80.0	100.0	100.0

GLASS LOAD CAPACITY - PSF				
NOMINAL DIMS.		GLASS TYPE 'A' & 'AI'	GLASS TYPE 'B' & 'C'	GLASS TYPE 'BI' & 'CI'
D.L.O. WIDTH	D.L.O. HEIGHT	EXT. (+) INT. (-)	EXT. (+) INT. (-)	EXT. (+) INT. (-)
24"	90"	80.0	100.0	100.0
30"		80.0	100.0	100.0
36"		80.0	100.0	100.0
42"		80.0	100.0	100.0
48"		80.0	100.0	100.0
24"	96"	80.0	100.0	100.0
30"		80.0	100.0	100.0
36"		80.0	100.0	100.0
42"		80.0	100.0	100.0
48"		80.0	100.0	100.0
24"	102"	80.0	100.0	100.0
30"		80.0	100.0	100.0
36"		80.0	100.0	100.0
42"		80.0	100.0	100.0
48"		80.0	100.0	100.0
24"	108"	80.0	100.0	100.0
30"		80.0	100.0	100.0
36"		80.0	100.0	100.0
42"		80.0	100.0	100.0
48"		80.0	100.0	100.0
24"	114"	80.0	100.0	100.0
30"		80.0	100.0	100.0
36"		80.0	100.0	100.0
42"		80.0	100.0	100.0
48"		80.0	100.0	100.0
24"	120"	80.0	100.0	100.0
30"		80.0	100.0	100.0
36"		80.0	100.0	100.0
42"		80.0	100.0	100.0
48"		80.0	100.0	100.0
44-1/2"	116-1/2"	80.0	100.0	100.0
56-1/2"	68-1/2"	80.0	100.0	100.0
56-1/2"	92-1/2"	80.0	100.0	100.0

NOTE: GLASS CAPACITIES ON THIS SHEET ARE BASED ON ASTM E1300-04 (3 SEC. GUSTS).



PRODUCT REVISED as complying with the Florida Building Code Acceptance No. 10-1213-12 Expiration Date 06/22/2016  
By: [Signature] Miami Dade Product Control

Engr: JAVAD AHMAD CIVIL FLA. PE # 70592 C.A.N. 3538  
MAR 29 2011

**AL-FAROOQ CORPORATION**  
ENGINEERS & PRODUCT DEVELOPMENT  
1235 S.W. 87 AVE  
MIAMI, FLORIDA 33174  
TEL. (305) 264-8100 FAX. (305) 262-6978  
STORE W05-31CTC

PRO-TECH 45SG ALUM WINDOW WALL SYSTEM (L.M.I.)  
**CRAWFORD TRACEY CORPORATION**  
3301 SW 13TH DRIVE  
DEERFIELD BEACH, FL. 33442-8101  
TEL. (954) 698-6888 FAX. (954) 698-6889

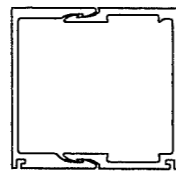
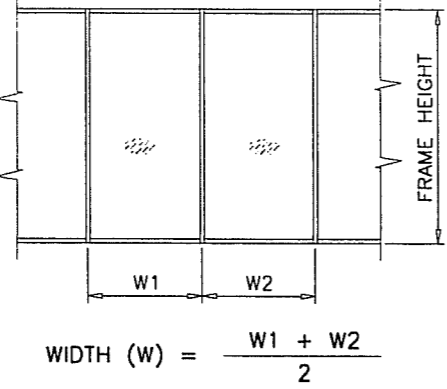
no.	date	description
A	02.27.08	INSUL. GLASS ADDED
B	11.29.10	GENERAL REVISION
C	03.21.11	REV. PER BNC COMMENTS

date: 06-24-05  
scale: 1/2" = 1"  
dr. by: HAMID  
chk. by:

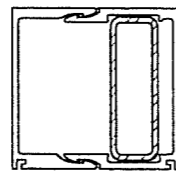
drawing no. **W05-31**  
sheet 2 of 8

MULLION LOAD CAPACITY - PSF  
WITHOUT INTERMEDIATE HORIZONTALS

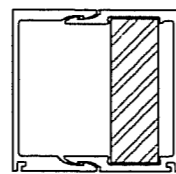
NOMINAL DIMS.		WITHOUT REINF.	LIGHT REINF.	HEAVY REINF.
WIDTH (W)	FRAME HEIGHT	EXT. (+) INT. (-)	EXT. (+) INT. (-)	EXT. (+) INT. (-)
24"	78"	100.0	100.0	100.0
30"		100.0	100.0	100.0
36"		100.0	100.0	100.0
42"		100.0	100.0	100.0
48"		100.0	100.0	100.0
54"		100.0	100.0	100.0
60"		100.0	100.0	100.0
66"		100.0	100.0	100.0
72"	100.0	100.0	100.0	
24"	84"	100.0	100.0	100.0
30"		100.0	100.0	100.0
36"		100.0	100.0	100.0
42"		100.0	100.0	100.0
48"		100.0	100.0	100.0
54"		94.9	100.0	100.0
60"		89.2	100.0	100.0
66"		85.2	100.0	100.0
24"	90"	100.0	100.0	100.0
30"		100.0	100.0	100.0
36"		100.0	100.0	100.0
42"		91.1	100.0	100.0
48"		82.0	100.0	100.0
54"		75.4	98.1	100.0
60"	70.4	91.3	100.0	
24"	96"	100.0	100.0	100.0
30"		99.9	100.0	100.0
36"		84.8	100.0	100.0
42"		74.2	100.0	100.0
48"		66.6	93.1	100.0
54"		60.9	84.8	100.0
60"	56.7	78.5	100.0	
24"	102"	100.0	100.0	100.0
30"		82.9	100.0	100.0
36"		70.2	100.0	100.0
42"		61.3	91.6	100.0
48"		54.8	81.7	100.0
54"		50.0	74.1	100.0
24"	108"	86.1	100.0	100.0
30"		69.6	100.0	100.0
36"		58.8	93.5	100.0
42"		51.2	81.2	100.0
48"		45.7	72.2	99.9
24"	114"	73.0	100.0	100.0
30"		59.0	93.8	100.0
36"		49.8	79.1	100.0
42"		43.3	68.8	100.0
48"		38.5	61.3	89.0
24"	120"	62.5	99.4	100.0
30"		50.4	80.2	100.0
36"		42.5	67.6	100.0
42"		36.9	58.7	90.1
48"		32.8	52.2	79.9



WITHOUT REINFORCING



LIGHT REINFORCING

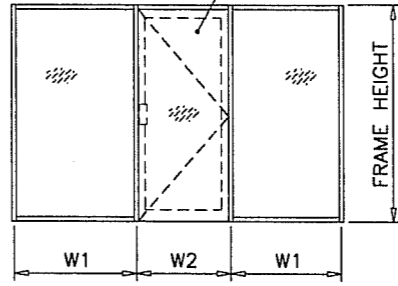


HEAVY REINFORCING

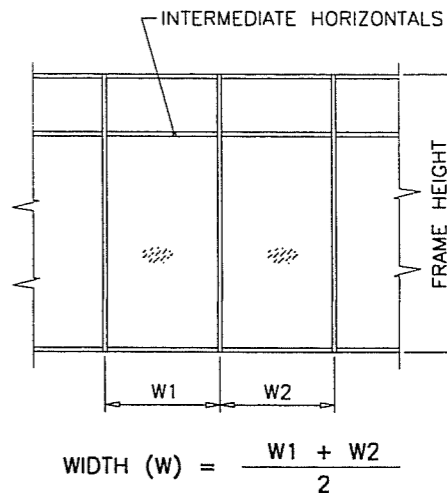
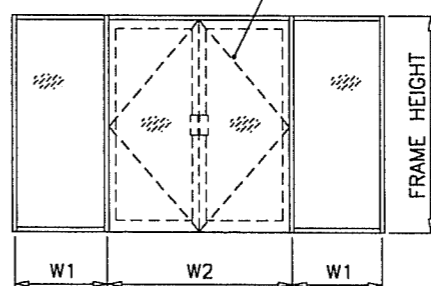
MULLION LOAD CAPACITY - PSF  
WITH INTERMEDIATE HORIZONTALS OR MULLION WITH DOORS

NOMINAL DIMS.		WITHOUT REINF.	LIGHT REINF.	HEAVY REINF.
WIDTH (W)	FRAME HEIGHT	EXT. (+) INT. (-)	EXT. (+) INT. (-)	EXT. (+) INT. (-)
24"	78"	100.0	100.0	100.0
30"		100.0	100.0	100.0
36"		100.0	100.0	100.0
42"		100.0	100.0	100.0
48"		100.0	100.0	100.0
54"		99.7	100.0	100.0
60"		89.8	100.0	100.0
66"		81.6	94.2	100.0
72"	74.8	86.4	100.0	
24"	84"	100.0	100.0	100.0
30"		100.0	100.0	100.0
36"		100.0	100.0	100.0
42"		100.0	100.0	100.0
48"		89.8	100.0	100.0
54"		79.9	99.3	100.0
60"		71.9	89.4	100.0
66"		65.3	81.3	100.0
24"	90"	100.0	100.0	100.0
30"		100.0	100.0	100.0
36"		97.4	100.0	100.0
42"		83.5	100.0	100.0
48"		73.0	97.3	100.0
54"		64.9	86.5	100.0
60"	58.4	77.9	100.0	
24"	96"	100.0	100.0	100.0
30"		96.3	100.0	100.0
36"		80.2	100.0	100.0
42"		68.8	97.8	100.0
48"		60.2	85.5	100.0
54"		53.5	76.0	100.0
60"	48.1	68.4	94.7	
24"	102"	100.0	100.0	100.0
30"		80.3	100.0	100.0
36"		66.9	100.0	100.0
42"		57.3	86.6	100.0
48"		50.2	75.8	100.0
54"		44.6	67.4	93.2
24"	108"	84.5	100.0	100.0
30"		67.6	100.0	100.0
36"		56.4	89.6	100.0
42"		48.3	76.8	100.0
48"		42.3	67.2	93.5
24"	114"	71.9	100.0	100.0
30"		57.5	91.4	100.0
36"		47.9	76.2	100.0
42"		41.1	65.3	95.9
48"		35.9	57.2	83.9
24"	120"	61.6	98.0	100.0
30"		49.3	78.4	100.0
36"		41.1	65.3	100.0
42"		35.2	56.0	86.6
48"		30.8	49.0	75.7

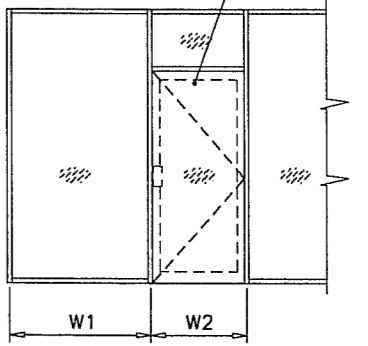
FRENCH DOORS  
SEE SEPARATE NOA



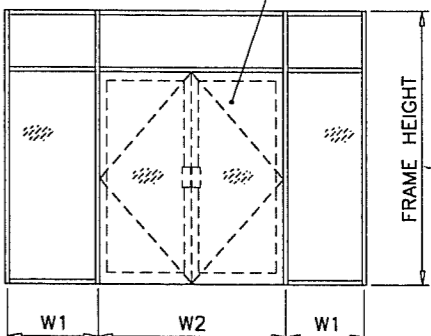
FRENCH DOORS  
SEE SEPARATE NOA



FRENCH DOORS  
SEE SEPARATE NOA



FRENCH DOORS  
SEE SEPARATE NOA



Engr: JAVAD AHMAD  
CIVIL  
FLA. PE # 70592  
C.A.N. 3538  
MAR 29 2011

PRODUCT REVISED  
as complying with the Florida  
Building Code  
Acceptance No. 10-123.12  
Expiration Date 06/22/2016  
By: *[Signature]*  
Miami Dade Product Control

**afC**  
**AL-FAROOQ CORPORATION**  
ENGINEERS & PRODUCT DEVELOPMENT  
1235 S.W. 87 AVE  
MIAMI, FLORIDA 33174  
TEL. (305) 264-8100 FAX. (305) 262-6978  
STORE W05-31CTC

PRO-TECH 45SG ALUM WINDOW WALL SYSTEM (L.M.I.)  
**CRAWFORD TRACEY CORPORATION**  
3301 SW 13TH DRIVE  
DEERFIELD BEACH, FL. 33442-8101  
TEL. (954) 698-6888 FAX. (954) 698-6889

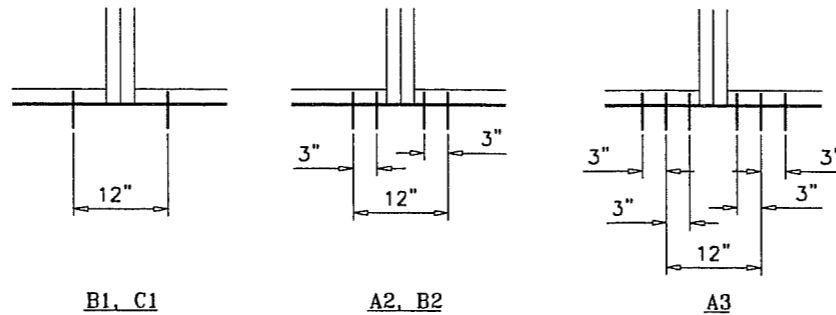
no	date	description
A	02.27.08	NO CHANGE THIS SHEET
B	11.29.10	NO CHANGE THIS SHEET
C	03.21.11	NO CHANGE THIS SHEET

date: 06-24-05  
scale:  
dr. by: HAMID  
chk. by:

drawing no.  
**W05-31**  
sheet 3 of 8

ANCHOR LOAD CAPACITY - PSF  
EXT.(+) & INT.(-)

NOMINAL DIMS.		ANCHORS TYPE 'A'		ANCHORS TYPE 'B'		ANCHORS TYPE 'C'
WIDTH (W)	FRAME HEIGHT	A2	A3	B1	B2	C1
24"	78"	100.0	100.0	100.0	100.0	100.0
30"		100.0	100.0	100.0	100.0	100.0
36"		100.0	100.0	100.0	100.0	100.0
42"		100.0	100.0	100.0	100.0	100.0
48"		100.0	100.0	100.0	100.0	100.0
54"		100.0	100.0	98.5	100.0	100.0
60"		100.0	100.0	100.0	100.0	100.0
66"		95.6	100.0	100.0	100.0	100.0
72"	100.0	100.0	100.0	100.0	100.0	
24"	84"	100.0	100.0	100.0	100.0	100.0
30"		100.0	100.0	100.0	100.0	100.0
36"		100.0	100.0	100.0	100.0	100.0
42"		100.0	100.0	100.0	100.0	100.0
48"		100.0	100.0	100.0	100.0	100.0
54"		93.0	100.0	91.4	100.0	100.0
60"		97.6	100.0	100.0	100.0	100.0
66"		88.7	100.0	93.5	100.0	100.0
24"	90"	100.0	100.0	96.0	100.0	100.0
30"		100.0	100.0	100.0	100.0	100.0
36"		100.0	100.0	96.0	100.0	100.0
42"		100.0	100.0	100.0	100.0	100.0
48"		97.6	100.0	96.0	100.0	100.0
54"		86.8	100.0	85.3	100.0	100.0
60"		91.1	100.0	96.0	100.0	100.0
66"		100.0	100.0	90.0	100.0	100.0
24"	96"	100.0	100.0	100.0	100.0	100.0
30"		100.0	100.0	100.0	100.0	100.0
36"		100.0	100.0	90.0	100.0	100.0
42"		100.0	100.0	100.0	100.0	100.0
48"		91.5	100.0	90.0	100.0	100.0
54"		81.3	100.0	80.0	100.0	100.0
60"		85.4	100.0	90.0	100.0	100.0
66"		100.0	100.0	84.7	100.0	100.0
24"	102"	100.0	100.0	100.0	100.0	100.0
30"		100.0	100.0	100.0	100.0	100.0
36"		95.7	100.0	84.7	100.0	100.0
42"		98.4	100.0	96.8	100.0	100.0
48"		86.1	100.0	84.7	100.0	100.0
54"		76.5	100.0	75.3	100.0	100.0
60"		100.0	100.0	80.0	100.0	100.0
66"		100.0	100.0	96.0	100.0	100.0
24"	108"	100.0	100.0	100.0	100.0	100.0
30"		100.0	100.0	96.0	100.0	100.0
36"		90.4	100.0	80.0	100.0	100.0
42"		93.0	100.0	91.4	100.0	100.0
48"		81.3	100.0	80.0	100.0	100.0
60"		100.0	100.0	75.8	100.0	100.0
66"		100.0	100.0	90.9	100.0	100.0
72"		85.6	100.0	75.8	100.0	100.0
24"	114"	100.0	100.0	100.0	100.0	100.0
30"		100.0	100.0	100.0	100.0	100.0
36"		85.6	100.0	75.8	100.0	100.0
42"		88.1	100.0	86.6	100.0	100.0
48"		77.1	100.0	75.8	100.0	100.0
60"		100.0	100.0	72.0	100.0	100.0
66"		100.0	100.0	86.4	100.0	100.0
72"		81.3	100.0	72.0	100.0	100.0
24"	120"	100.0	100.0	100.0	100.0	100.0
30"		100.0	100.0	100.0	100.0	100.0
36"		81.3	100.0	72.0	100.0	100.0
42"		83.7	100.0	82.3	100.0	100.0
48"		73.2	97.6	72.0	100.0	100.0



B1, C1

A2, B2

A3

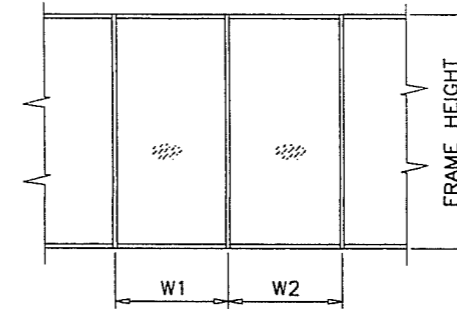
ANCHORS TYPES: SEE SHEET 5 FOR DESCRIPTION

A2 = (2) ANCHORS TYPE 'A' AT EACH SIDE OF MULLION  
A3 = (3) ANCHORS TYPE 'A' AT EACH SIDE OF MULLION

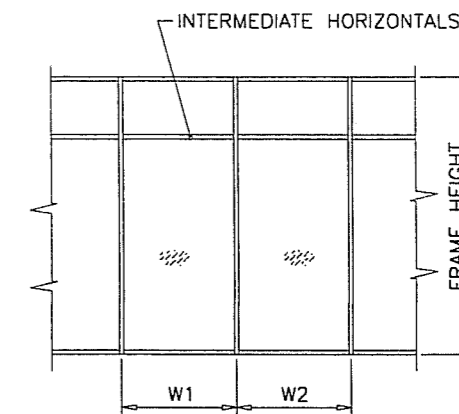
B1 = (1) ANCHOR TYPE 'B' AT EACH SIDE OF MULLION  
B2 = (2) ANCHORS TYPE 'B' AT EACH SIDE OF MULLION

C1 = (1) ANCHOR TYPE 'C' AT EACH SIDE OF MULLION

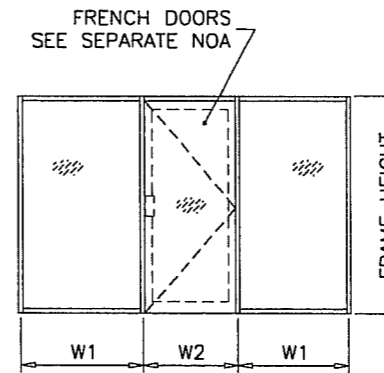
ALL OTHER ANCHORS TO BE SPACED AS PER ELEVATION.



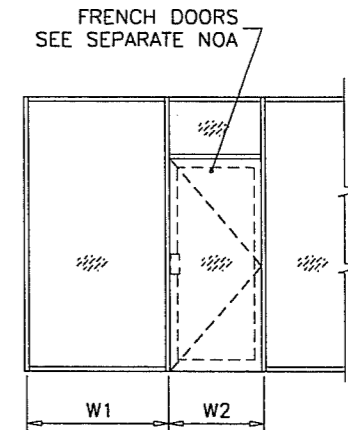
$$\text{WIDTH (W)} = \frac{W1 + W2}{2}$$



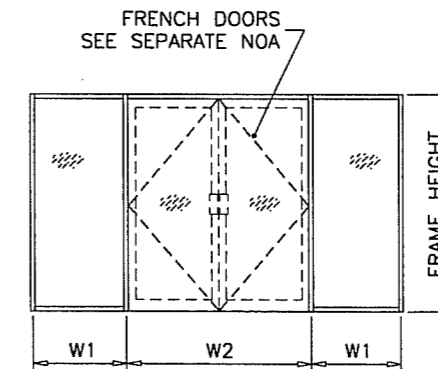
$$\text{WIDTH (W)} = \frac{W1 + W2}{2}$$



$$\text{WIDTH (W)} = \frac{W1 + W2}{2}$$



$$\text{WIDTH (W)} = \frac{W1 + W2}{2}$$



$$\text{WIDTH (W)} = \frac{W1}{2} + \frac{W2}{4}$$

Engr: JAVAD AHMAD  
CIVIL  
FLA. PE # 70592  
C.A.N. 3538  
MAR 20 2011

PRODUCT REVISED  
as complying with the Florida  
Building Code  
Acceptance No 10-1213/12  
Expiration Date 06/22/2016  
By [Signature]  
Miami Trade Product Control

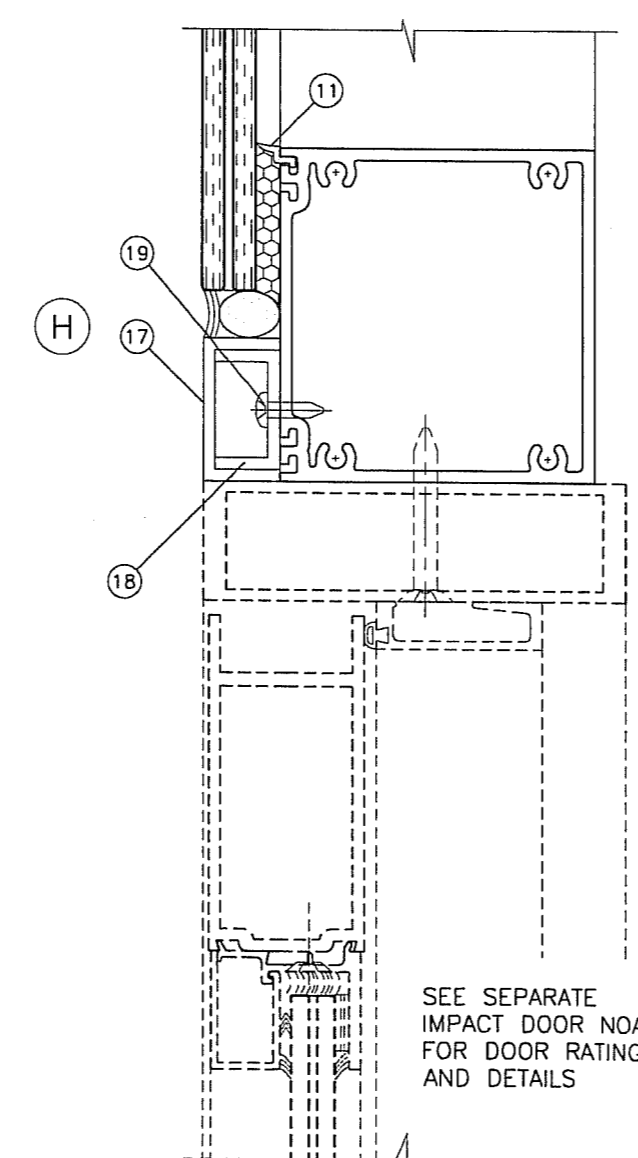
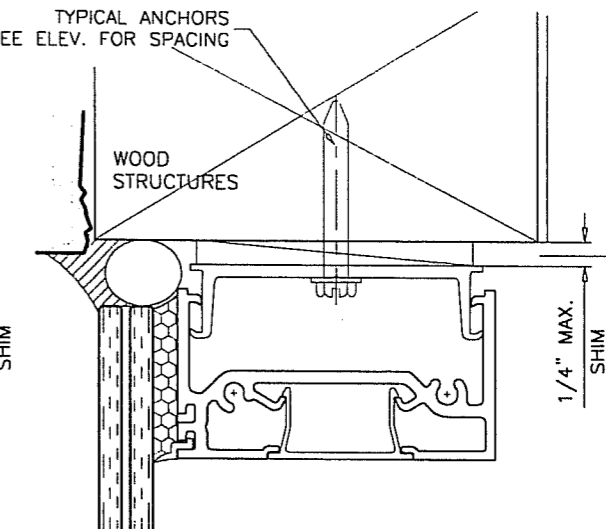
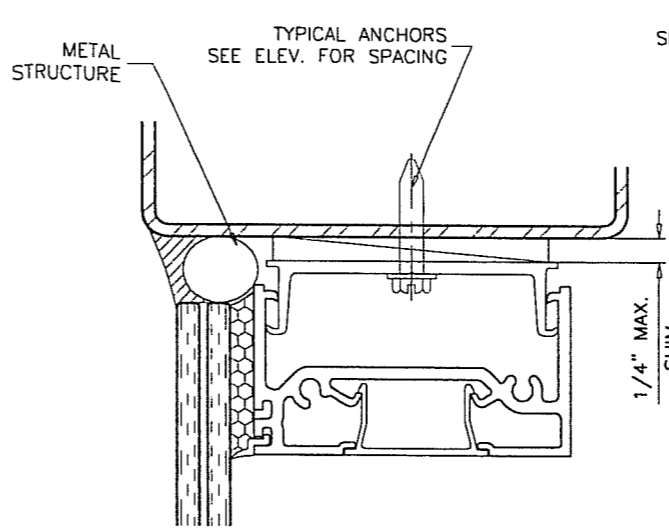
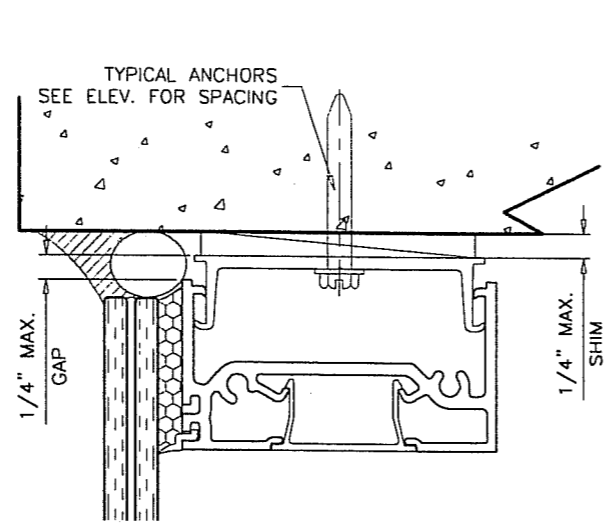
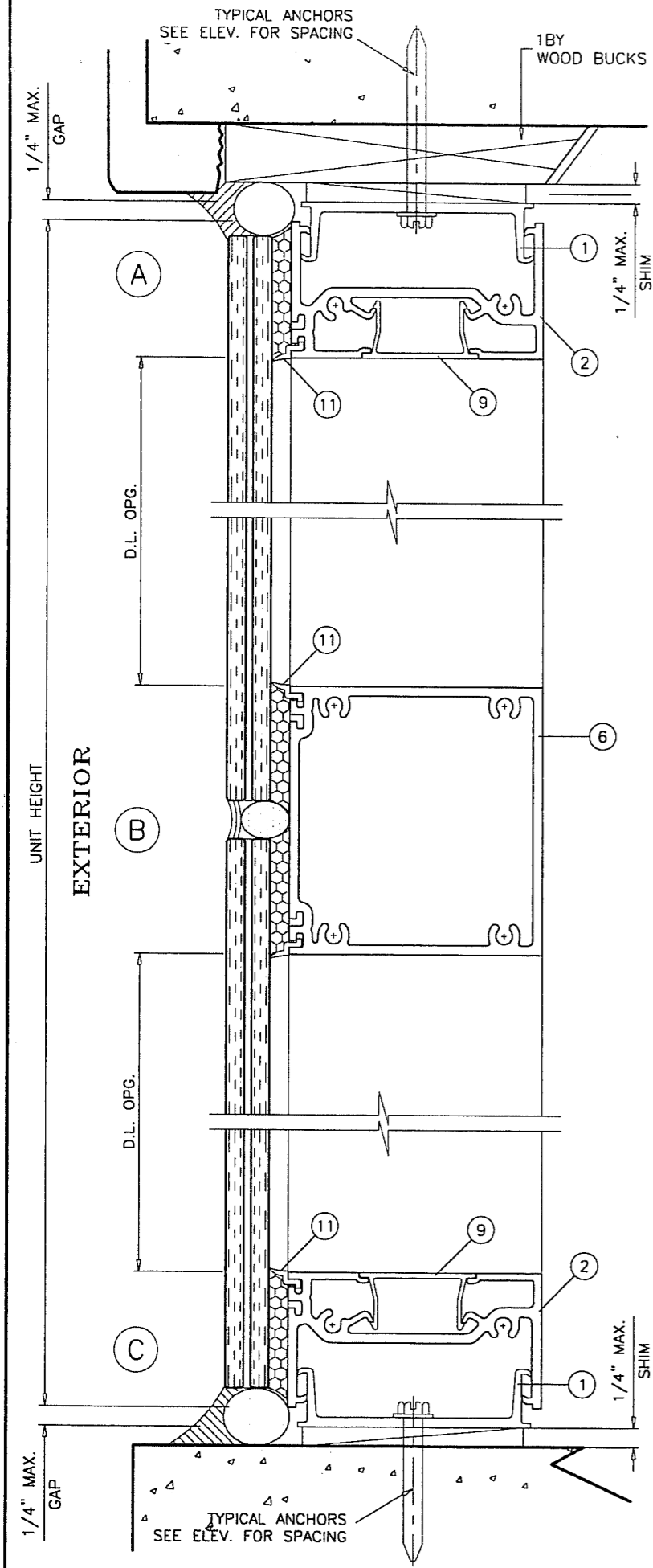
**af**  
**AL-FAROOQ CORPORATION**  
ENGINEERS & PRODUCT DEVELOPMENT  
12335 S.W. 87 AVE  
MIAMI, FLORIDA 33174  
TEL. (305) 264-8100 FAX. (305) 262-6978  
STORE/W05-31CTC

PRO-TECH 455G ALUM WINDOW WALL SYSTEM (L.M.I.)  
**CRAWFORD TRACEY CORPORATION**  
3301 SW 13TH DRIVE  
DEERFIELD BEACH, FL. 33442-8101  
TEL. (954) 698-6888 FAX. (954) 698-6889

no	date	description
A	02.27.08	NO CHANGE THIS SHEET
B	11.29.10	GENERAL REVISION
C	03.21.11	NO CHANGE THIS SHEET

date: 06-24-05  
scale: 1/2" = 1"  
dr. by: HAMID  
chk. by:

drawing no.  
**W05-31**  
sheet 4 of 8



WOOD BUCKS AND METAL STRUCTURES NOT BY CRAWFORD TRACEY MUST SUPPORT LOADS IMPOSED BY GLAZING SYSTEM AND TRANSFER THEM TO THE BUILDING STRUCTURE.

**TYPICAL ANCHORS:** SEE ELEV. FOR SPACING

TYPE 'A' - 1/4" DIA. ULTRACON BY 'ELCO' ( $F_u=177$  KSI,  $F_y=155$  KSI)  
 INTO 2BY WOOD BUCKS OR WOOD STRUCTURES  
 1-3/8" MIN. PENETRATION INTO WOOD  
 THRU 1BY BUCKS INTO CONC. OR MASONRY  
 1-1/4" MIN. EMBED INTO CONC. OR MASONRY

TYPE 'B' - 1/4" DIA. ULTRACON BY 'ELCO' ( $F_u=177$  KSI,  $F_y=155$  KSI)  
 DIRECTLY INTO CONC. OR MASONRY  
 1-1/4" MIN. EMBED INTO CONC. OR MASONRY

TYPE 'C' - 1/4" DIA. TEKS OR SELF DRILLING SCREWS (GRADE 5 CRS)  
 INTO METAL STRUCTURES  
 STEEL : 1/8" MIN. ( $F_y = 36$  KSI MIN.)  
 ALUMINUM : 1/8" THK. MIN. (6063-T5 MIN.)  
 (STEEL IN CONTACT WITH ALUMINUM TO BE PLATED OR PAINTED)

**TYPICAL EDGE DISTANCE**  
 INTO CONCRETE AND MASONRY = 2-1/2" MIN.  
 INTO WOOD STRUCTURE = 1" MIN.  
 INTO METAL STRUCTURE = 3/4" MIN.

CONCRETE AT HEAD, SILL OR JAMBS  $f'_c = 3000$  PSI MIN.  
 C-90 HOLLOW/FILLED BLOCK AT JAMBS  $f'_m = 2000$  PSI MIN.

**SEALANTS:**  
 ALL FRAME JOINTS ON EXTERIOR TO BE SEALED WITH DOW CORNING 795 SILICONE SEALANT.

Engr: JAVAD AHMAD  
 CIVIL  
 FLA. PE # 70592  
 C.A.N. 3538

MAR 29 2011

PRODUCT REVISED  
 as complying with the Florida  
 Building Code  
 Acceptance No. 10-1213.12  
 Expiration Date 06/12/2016

By *[Signature]*  
 Miami Dade Product Control

**af c**

**AL-FAROOQ CORPORATION**  
 ENGINEERS & PRODUCT DEVELOPMENT  
 1235 S.W. 87 AVE  
 MIAMI, FLORIDA 33174  
 TEL. (305) 264-8100 FAX. (305) 262-6978  
 STORE W05-31CTC

PRO-TECH 45SG ALUM WINDOW WALL SYSTEM (L.M.I.)

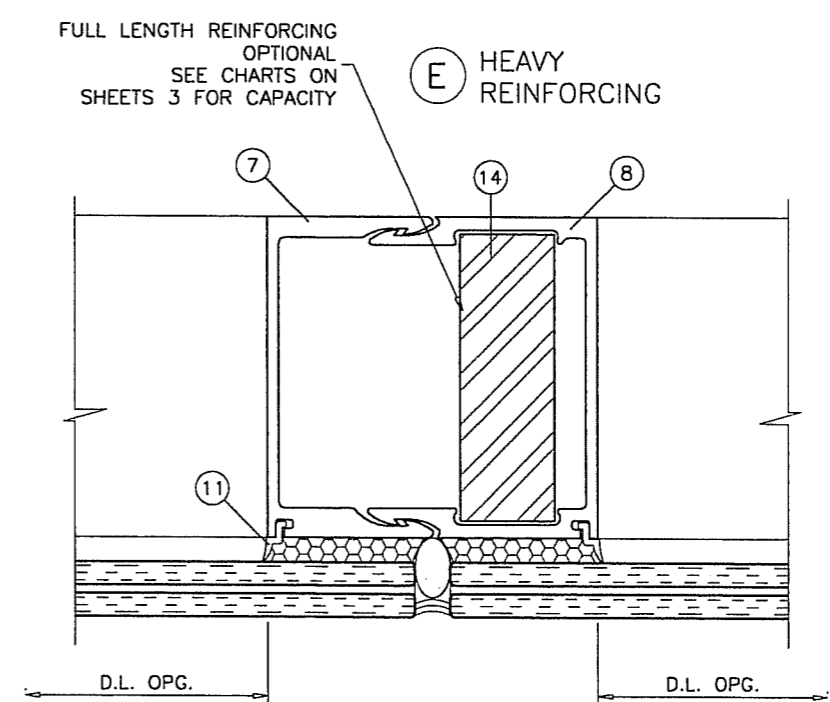
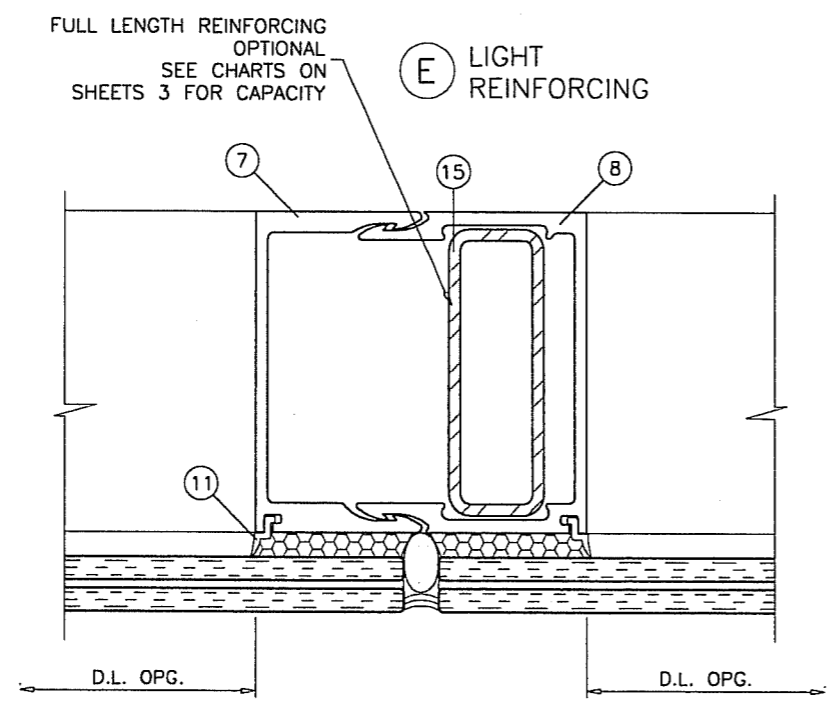
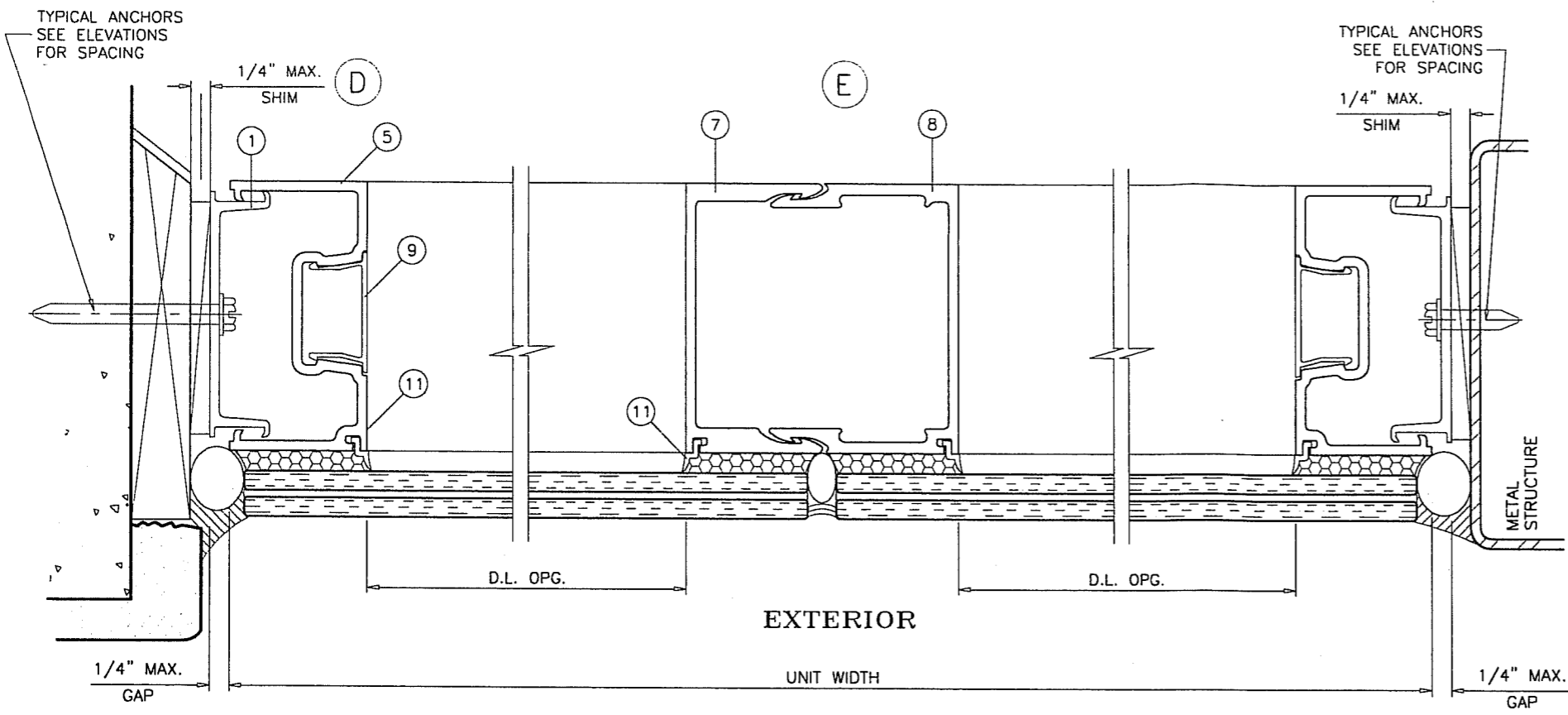
**CRAWFORD TRACEY CORPORATION**  
 3301 SW 13TH DRIVE  
 DEERFIELD BEACH, FL. 33442-8101  
 TEL. (954) 698-6888 FAX. (954) 698-6889

NO	DATE	BY	DESCRIPTION
A	02.27.08		NO CHANGE THIS SHEET
B	11.29.10		GENERAL REVISION
C	03.21.11		REV. PER BNC COMMENTS

revisions:

date: 06-24-05  
 scale: 1/2" = 1"  
 dr. by: HAMID  
 chk. by:

drawing no. **W05-31**  
 sheet 5 of 8



Engr: JAVAD AHMAD  
 CIVIL  
 FLA. PE # 70592  
 C.A.N. 3538

MAR 29 2011

PRODUCT REVISED  
 as complying with the Florida  
 Building Code  
 Acceptance No. 10-1213-12  
 Expiration Date 06/22/2016

By *[Signature]*  
 Miami Dade Product Control

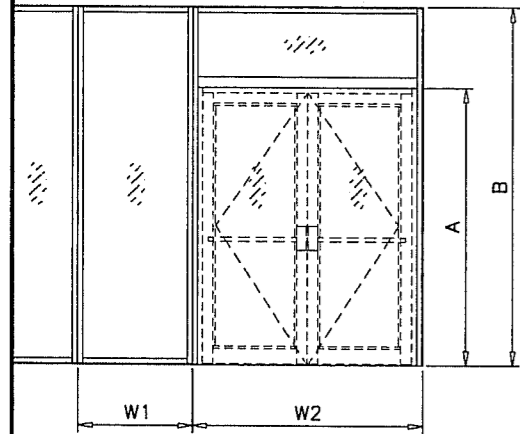
**af c**  
**AL-FAROOQ CORPORATION**  
 ENGINEERS & PRODUCT DEVELOPMENT  
 1235 S.W. 87 AVE  
 MIAMI, FLORIDA 33174  
 TEL. (305) 264-8100 FAX. (305) 262-6978  
 STORE\W05-31CTC

PRO-TECH 45SG ALUM WINDOW WALL SYSTEM (L.M.I.)  
**CRAWFORD TRACEY CORPORATION**  
 3301 SW 13TH DRIVE  
 DEERFIELD BEACH, FL. 33442-8101  
 TEL. (954) 698-6888 FAX. (954) 698-6889

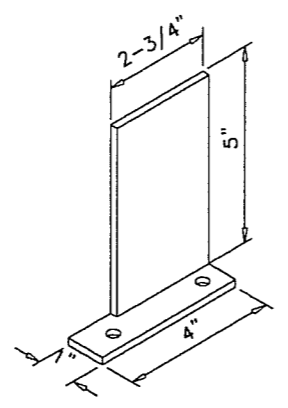
NO	DATE	DESCRIPTION
A	02.27.08	NO CHANGE THIS SHEET
B	11.29.10	NO CHANGE THIS SHEET
C	03.21.11	NO CHANGE THIS SHEET

date: 06-24-05  
 scale: 1/2" = 1"  
 dr. by: HAMID  
 chk. by:

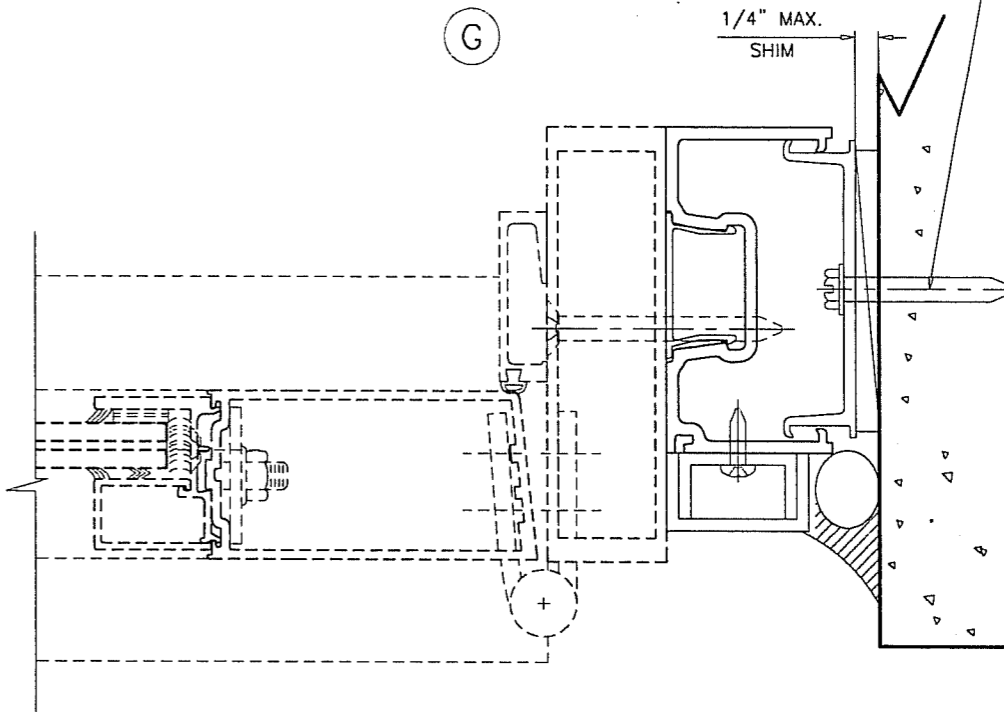
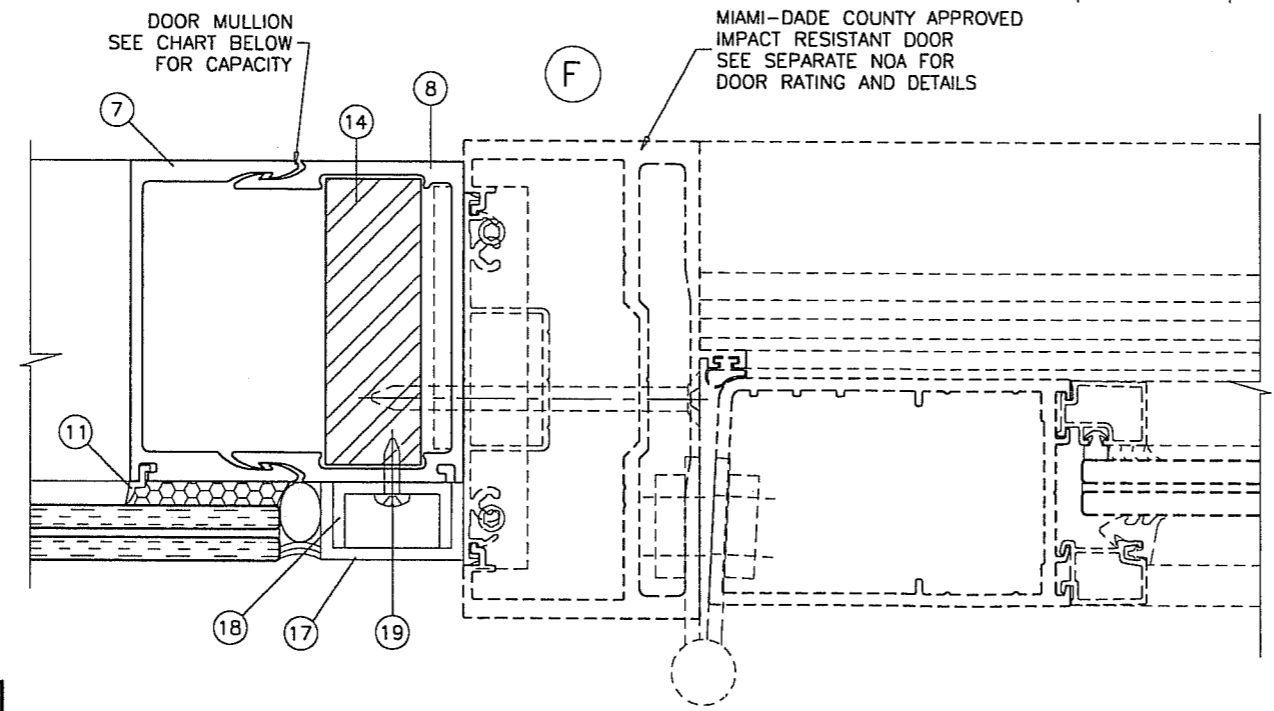
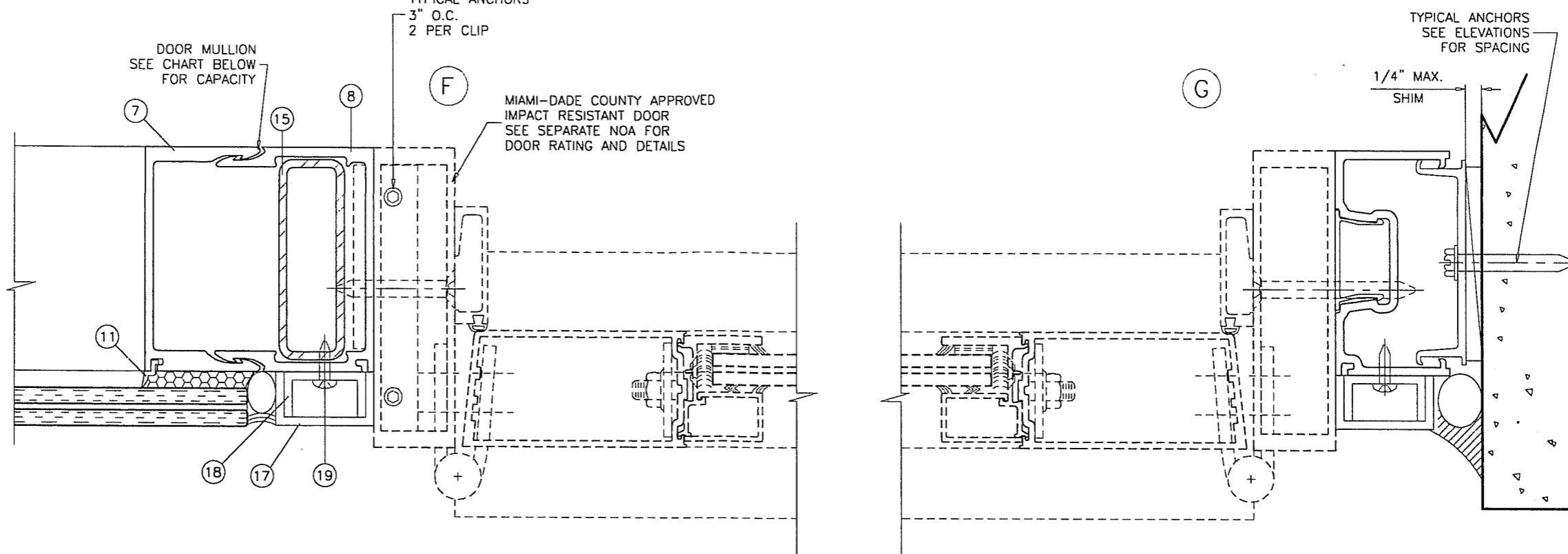
drawing no.  
**W05-31**  
 sheet 6 of 8



DOOR MULLION DESIGN LOAD CAPACITY - PSF				
FRAME HEIGHT-B INCHES MAX.	DOOR HEIGHT-A INCHES MAX.	WIDTH-W1 INCHES MAX.	WIDTH-W2 INCHES MAX.	EXT. (+) INT. (-)
120	96	36	72	70.1
	90			66.1
	84			62.0
	80			59.4
114	96	42	72	80.0
	90			68.5
108	96	48	72	80.0
	90			80.0
102	96	54	72	80.0
	90			80.0



DOOR MULLION INSTALLATION CLIP  
1 X 5 X 3/16" ALUM ANGLE



Engr: JAVAD AHMAD  
CIVIL  
FLA. PE # 70592  
C.A.N. 3538

*[Signature]*  
MAR 29 2011

PRODUCT REVISED  
as complying with the Florida  
Building Code  
Acceptance No 1021213.12  
Expiration Date 06/22/2016

By *[Signature]*  
Miami Dade Product Control

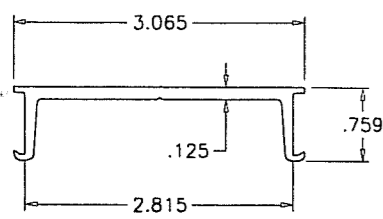
**AL-FAROOQ CORPORATION**  
ENGINEERS & PRODUCT DEVELOPMENT  
1235 S.W. 87 AVE  
MIAMI, FLORIDA 33174  
TEL. (305) 264-8100 FAX. (305) 262-6978  
STORE/W05-31CTC

PRO-TECH 45SG ALUM WINDOW WALL SYSTEM (L.M.I.)  
**CRAWFORD TRACEY CORPORATION**  
3301 SW 13TH DRIVE  
DEERFIELD BEACH, FL. 33442-8101  
TEL. (954) 698-6888 FAX. (954) 698-6889

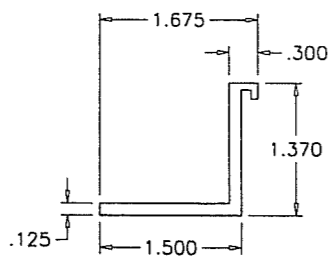
no	date	by	description
A	02.27.08		NO CHANGE THIS SHEET
B	11.29.10		NO CHANGE THIS SHEET
C	03.21.11		NO CHANGE THIS SHEET

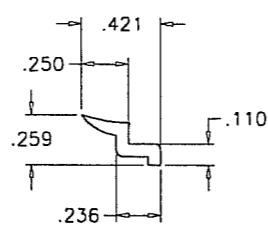
date: 06-24-05	scale: 1/2" = 1"	dr. by: HAMID	chk. by:
drawing no. W05-31		sheet 7 of 8	



① SUB BUCK



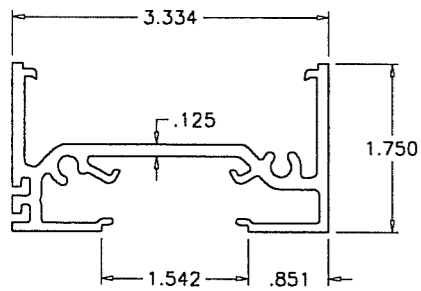
⑩ SETTING PIECE  
INSUL. LAM. GLASS



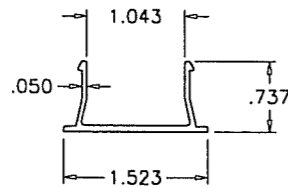
⑪ INT. GLAZING SPACER

SCALE 1:1

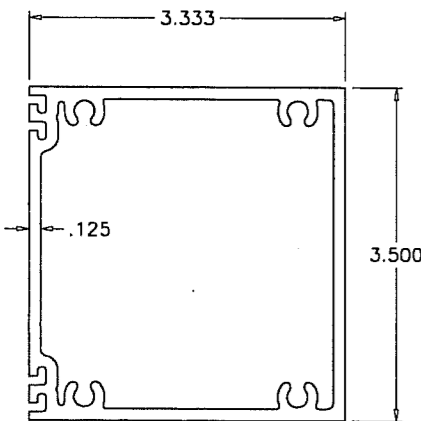
ITEM NO.	PART NUMBER	QUANTITY	DESCRIPTION	MATERIAL	MANF./SUPPLIER/REMARKS
1	B44B001	AS REQD.	SUB BUCK	6105-T5	-
2	144P176	AS REQD.	FRAME HEAD/SILL	6063-T6	-
5	144J176	AS REQD.	FRAME JAMB	6063-T6	-
6	144H342	AS REQD.	HORIZONTAL	6063-T6	-
7	144M114	AS REQD.	FEMALE MULLION	6063-T6	-
8	144M113	AS REQD.	MALE MULLION	6063-T6	-
9	T44U119	AS REQD.	SNAP-IN COVER	6063-T6	-
10	170-116	AS REQD.	4" LONG SETTING PIECE (INSUL. LAM. GLASS)	6105-T5	AT 1/4 POINTS
11	#0932	AS REQD.	INTERIOR GLAZING SPACER	POLYPROPYLENE	DUROMETER ±100 SHORE A
12	-	2/ LITE	SETTING BLOCK (1/8" X 1-3/16" X 4" LONG)	EPDM	DUROMETER ±75 SHORE A
13	983	-	GLAZING COMPOUND	SILICONE	DOW CORNING
14	-	AS REQD.	STEEL BAR, FULL LENGTH	A36 STEEL	1" X 3"
15	-	AS REQD.	REINFORCING TUBE, FULL LENGTH	A36 STEEL	1 X 3 X 11 GA.
16	#14 X 1-1/4"	AS REQD.	FRAME ASSEMBLY SCREWS	ST. STEEL	P.H. SMS
17	-	AS REQD.	FILLER CHANNEL	6063-T6	13/16 X 1-1/2 X 13/16 X 1/8"
18	-	AS REQD.	FILLER CHANNEL	6063-T6	11/16 X 1-1/4 X 11/16 X 1/8"
19	#10 X 1"	AS REQD.	FILLER CHANNEL SCREWS	ST. STEEL	AT 14" O.C.



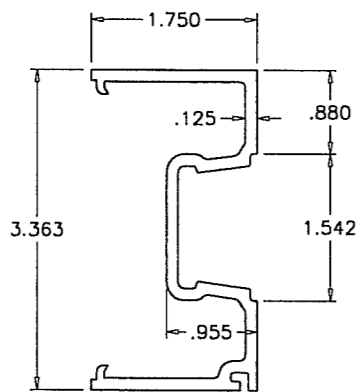
② FRAME HEAD/SILL



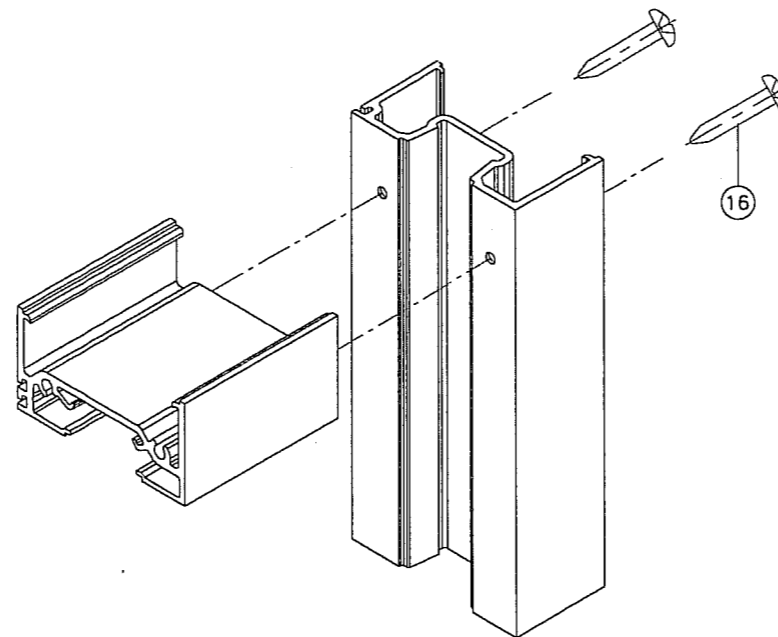
⑨ SNAP-IN COVER



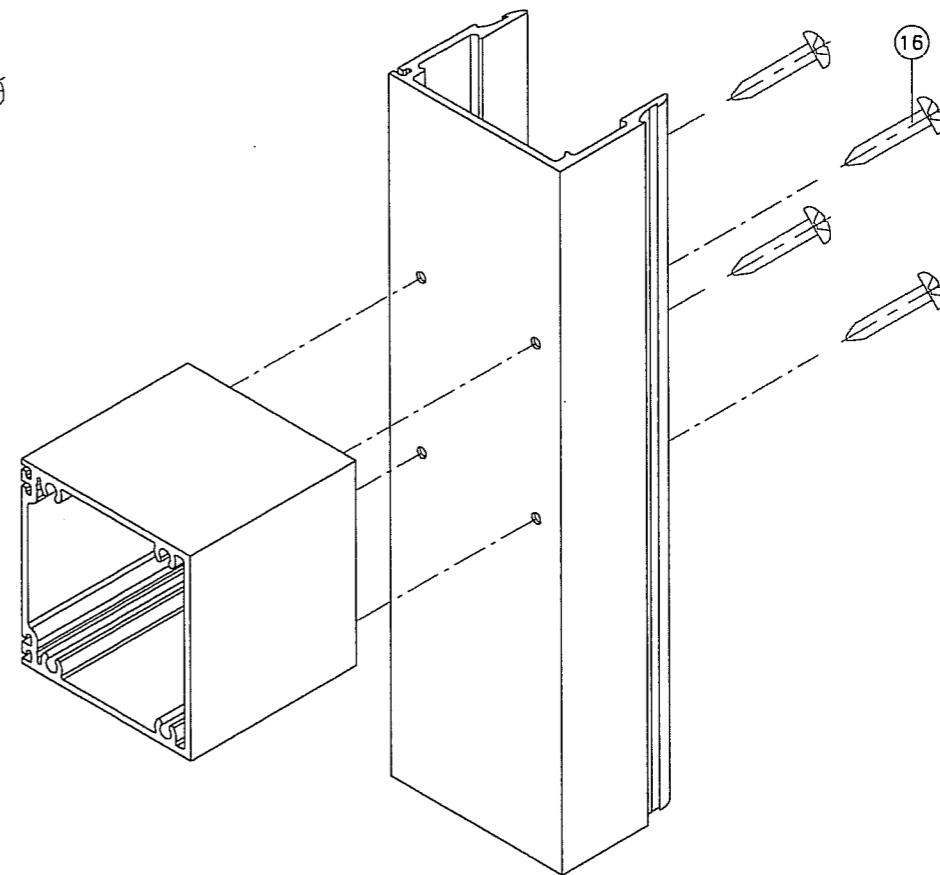
⑥ FRAME HORIZONTAL



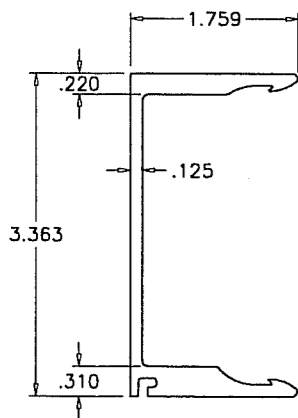
⑤ FRAME JAMB



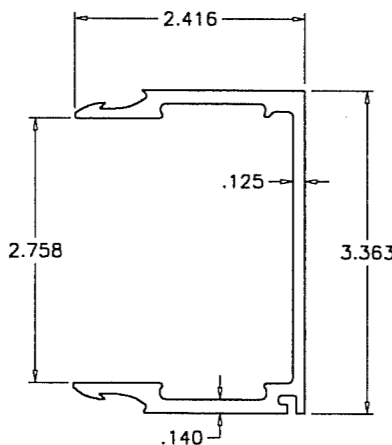
FRAME TOP/BOTTOM CORNER



FRAME HORIZONTAL CORNER



⑦ FEMALE MULLION



⑧ MALE MULLION

Engr: JAVAD AHMAD  
CIVIL  
FLA. PE # 70592  
C.A.N. 3538

MAR 29 2011

PRODUCT REVISED  
as complying with the Florida  
Building Code  
Acceptance No. 10-1213.12  
Expiration Date 06/22/2016

By: *[Signature]*  
Miami Dade Product Control

PRO-TECH 45SG ALUM WINDOW WALL SYSTEM (L.M.I.)  
**CRAWFORD TRACEY CORPORATION**  
3301 SW 13TH DRIVE  
DEERFIELD BEACH, FL. 33442-8101  
TEL. (954) 698-6888 FAX. (954) 698-6889

no	date	by	description
A	02.27.08		SETTING PIECE ADDED
B	11.29.10		NO CHANGE THIS SHEET
C	03.21.11		REV. PER BNC COMMENTS

date: 06-24-05  
scale: 1/2" = 1"  
dr. by: HAMID  
chk. by:

drawing no.  
**W05-31**

sheet 8 of 8

**AL-FAROOQ CORPORATION**  
ENGINEERS & PRODUCT DEVELOPMENT  
1235 S.W. 87 AVE  
MIAMI, FLORIDA 33174  
TEL. (305) 264-8100 FAX. (305) 262-6978

afC

STORE\W05-31CTC