



**MIAMI-DADE COUNTY**  
 BUILDING CODE COMPLIANCE OFFICE (BCCO)  
 PRODUCT CONTROL DIVISION

MIAMI-DADE COUNTY, FLORIDA  
 METRO-DADE FLAGLER BUILDING  
 140 WEST FLAGLER STREET, SUITE 1603  
 MIAMI, FLORIDA 33130-1563  
 (305) 375-2901 FAX (305) 372-6339

**NOTICE OF ACCEPTANCE (NOA)**

[www.miamidade.gov/buildingcode](http://www.miamidade.gov/buildingcode)

**Crawford Tracey Corp.**  
 3301 SW 13<sup>th</sup> Drive  
 Deerfield Beach, FL 33442

**SCOPE:**

This NOA is being issued under the applicable rules and regulations governing the use of construction materials. The documentation submitted has been reviewed by Miami-Dade County Product Control Division and accepted by the Board of Rules and Appeals (BORA) to be used in Miami Dade County and other areas where allowed by the Authority Having Jurisdiction (AHJ).

This NOA shall not be valid after the expiration date stated below. The Miami-Dade County Product Control Division (In Miami Dade County) and/or the AHJ (in areas other than Miami Dade County) reserve the right to have this product or material tested for quality assurance purposes. If this product or material fails to perform in the accepted manner, the manufacturer will incur the expense of such testing and the AHJ may immediately revoke, modify, or suspend the use of such product or material within their jurisdiction. BORA reserves the right to revoke this acceptance, if it is determined by Miami-Dade County Product Control Division that this product or material fails to meet the requirements of the applicable building code. This product is approved as described herein, and has been designed to comply with the Florida Building Code, including the High Velocity Hurricane Zone.

**DESCRIPTION: Series "Pro-Tech 45" Aluminum Window Wall System – S.M.I.**

**APPROVAL DOCUMENT:** Drawing No. W04-70, titled "Pro-Tech 45 Alum. Window Wall System (S.M.I.)", sheets 1 through 8 of 8, dated 08/06/04 with revision C dated 07/02/09, prepared by Al-Farooq Corporation, signed and sealed by Arshad Viqar, P.E., bearing the Miami-Dade County Product Control Revision stamp with the Notice of Acceptance number and expiration date by the Miami-Dade County Product Control Division.

**MISSILE IMPACT RATING: Small Missile Impact Resistant**

**LABELING:** Each unit shall bear a permanent label with the manufacturer's name or logo, city, state and following statement: "Miami-Dade County Product Control Approved", unless otherwise noted herein.

**RENEWAL** of this NOA shall be considered after a renewal application has been filed and there has been no change in the applicable building code negatively affecting the performance of this product.

**TERMINATION** of this NOA will occur after the expiration date or if there has been a revision or change in the materials, use, and/or manufacture of the product or process. Misuse of this NOA as an endorsement of any product, for sales, advertising or any other purposes shall automatically terminate this NOA. Failure to comply with any section of this NOA shall be cause for termination and removal of NOA.

**ADVERTISEMENT:** The NOA number preceded by the words Miami-Dade County, Florida, and followed by the expiration date may be displayed in advertising literature. If any portion of the NOA is displayed, then it shall be done in its entirety.

**INSPECTION:** A copy of this entire NOA shall be provided to the user by the manufacturer or its distributors and shall be available for inspection at the job site at the request of the Building Official.

This NOA revises and renews NOA # 05-1222.10 and consists of this page 1 and evidence pages E-1 and E-2, as well as approval document mentioned above.

The submitted documentation was reviewed by **Manuel Perez, P.E.**



NOA No. 09-0720.10  
 Expiration Date: November 25, 2014  
 Approval Date: November 04, 2009

NOTICE OF ACCEPTANCE: EVIDENCE SUBMITTED

A. DRAWINGS

1. Manufacturer's die drawings and sections.
2. Drawing No **W04-70**, Sheets 1 through 8 of 8, titled "Pro-Tech 45 Alum. Window Wall System (S.M.I.)", dated 07/29/08 with revision C dated 07/02/09, prepared by Al-Farooq Corporation, signed and sealed by Arshad Viqar, P.E.

B. TESTS

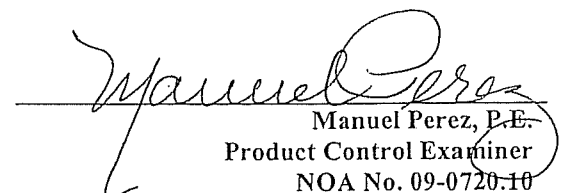
1. Test reports on
  - 1) Air Infiltration Test, per FBC, TAS 202-94
  - 2) Uniform Static Air Pressure Test, Loading per FBC, TAS 202-94
  - 3) Water Resistance Test, per FBC, TAS 202-94
  - 4) Small Missile Impact Test per FBC, TAS 201-94
  - 5) Cyclic Wind Pressure Loading per FBC, TAS 203-94along with marked-up drawings and installation diagram of an aluminum window wall system, prepared by American Test Lab of South Florida, Test Report No. **ATL-0717.01-03**, dated 03/17/04, signed and sealed by William R. Mehner, P.E.  
**"Submitted under NOA# 04-0908.04"**
2. Test reports on
  - 1) Air Infiltration Test, per FBC, TAS 202-94
  - 2) Uniform Static Air Pressure Test, Loading per FBC, TAS 202-94
  - 3) Water Resistance Test, per FBC, TAS 202-94
  - 4) Cyclic Wind Pressure Loading per FBC, TAS 203-94along with marked-up drawings and installation diagram of an aluminum window wall system, prepared by American Test Lab of South Florida, Test Report No. **ATL-0112.01-04**, dated 03/10/04, signed and sealed by William R. Mehner, P.E.  
**"Submitted under NOA# 04-0908.04"**

C. CALCULATIONS

1. Anchor verification calculations and structural analysis, complying with FBC-2004 and 2007, prepared by Al-Farooq Corporation, dated 07/02/09, signed and sealed by Arshad Viqar, P.E.  
**Complies with ASTM E1300-98/02/04.**

D. QUALITY ASSURANCE

1. Miami Dade Building Code Compliance Office (BCCO).

  
Manuel Perez, P.E.  
Product Control Examiner  
NOA No. 09-0720.10  
Expiration Date: November 25, 2014  
Approval Date: November 04, 2009

NOTICE OF ACCEPTANCE: EVIDENCE SUBMITTED

**E. MATERIAL CERTIFICATIONS**

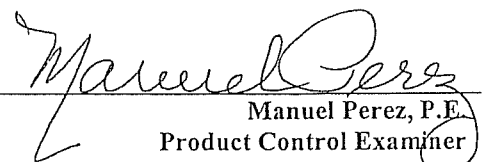
1. Notice of Acceptance No. **06-0216.06** issued to Solutia Inc. for their “**Saflex IIIG Clear or colored interlayer**” dated 05/04/06, expiring on 05/21/11.

**F. STATEMENTS**

1. Statement letter of conformance and no financial interest, dated July 7, 2009, signed and sealed by Arshad Viqar, P.E.

**G. OTHERS**

1. Notice of Acceptance No. **05-1222.10**, issued to Crawford Tracey Corporation for their “**Pro-Tech 45 Aluminum Window Wall System – S.M.I.**”, approved on 07/06/06 and expiring on 11/25/09.



---

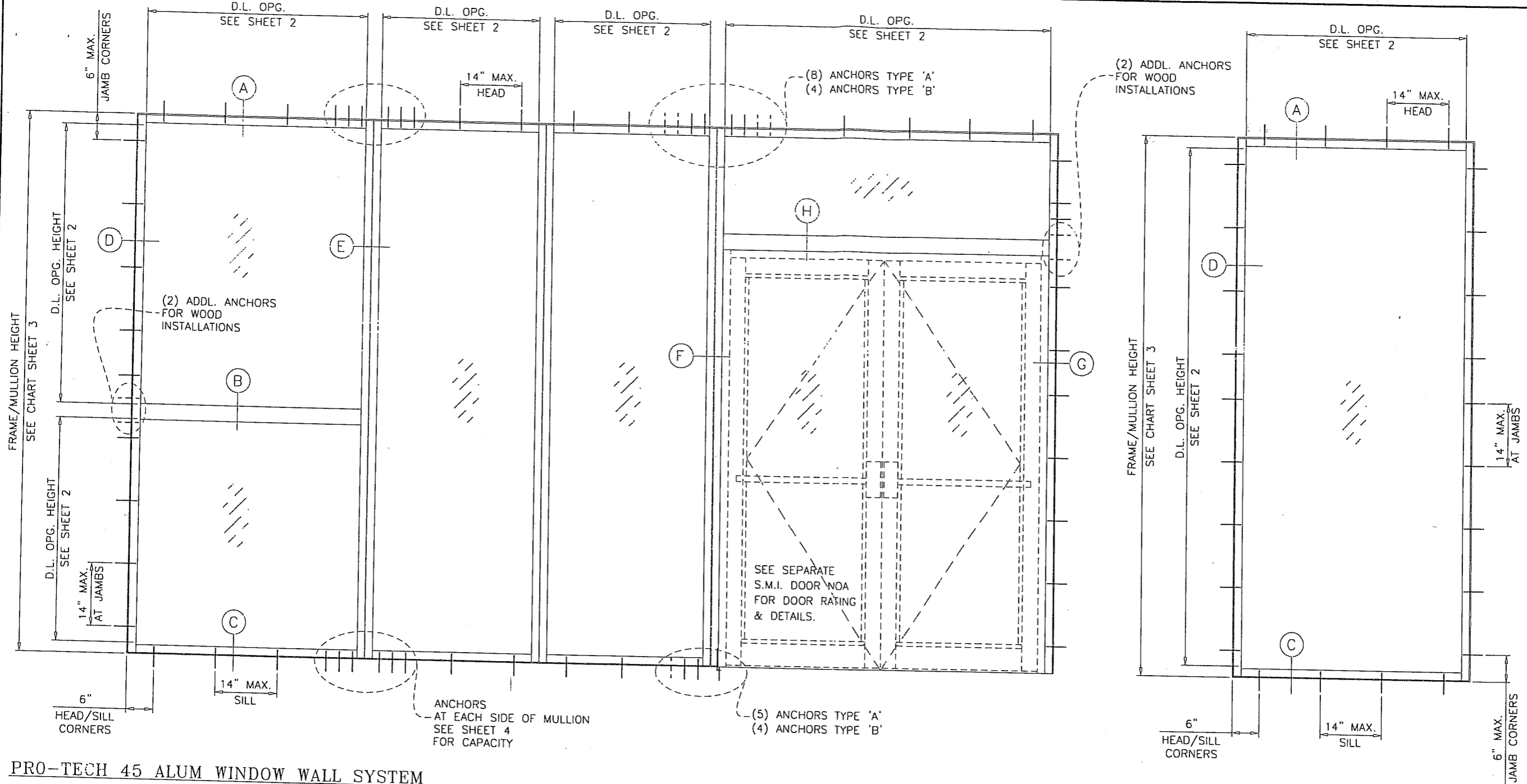
Manuel Perez, P.E.

Product Control Examiner

NOA No. 09-0720.10

Expiration Date: November 25, 2014

Approval Date: November 04, 2009



**PRO-TECH 45 ALUM WINDOW WALL SYSTEM**

THIS SYSTEM MAY BE USED IN CONJUNCTION WITH MIAMI-DADE COUNTY APPR'D SMALL MISSILE IMPACT RESISTANT FRENCH DOORS.

CODE REQUIREMENTS FOR SAFEGUARDS MUST BE OBSERVED.

THIS PRODUCT HAS BEEN DESIGNED AND TESTED TO COMPLY WITH THE REQUIREMENTS OF THE FLORIDA BUILDING CODE 2007 EDITION INCLUDING HIGH VELOCITY HURRICANE ZONE (HVHZ).

WOOD BUCKS BY OTHERS, MUST BE ANCHORED PROPERLY TO TRANSFER LOADS TO THE STRUCTURE.

ANCHORS SHALL BE AS LISTED, SPACED AS SHOWN ON DETAILS, ANCHORS EMBEDMENT TO BASE MATERIAL SHALL BE BEYOND WALL DRESSING OR STUCCO.

ANCHORING OR LOADING CONDITIONS NOT SHOWN IN THESE DETAILS ARE NOT PART OF THIS APPROVAL.

A LOAD DURATION INCREASE IS USED IN DESIGN OF ANCHORS INTO WOOD ONLY.

MATERIALS INCLUDING BUT NOT LIMITED TO STEEL/METAL SCREWS, THAT COME INTO CONTACT WITH OTHER DISSIMILAR MATERIALS SHALL MEET THE REQUIREMENTS OF 2007 FLORIDA BLDG. CODE SECTION 2003.8.4.

**TYPICAL ELEVATIONS**

**INSTRUCTIONS:**

USE CHARTS AS FOLLOWS.

- STEP 1** DETERMINE DESIGN WIND LOAD REQUIREMENT BASED ON WIND VELOCITY, BLDG. HEIGHT, WIND ZONE USING APPLICABLE ASCE 7 STANDARD.
- STEP 2** SEE CHARTS ON SHEETS 2 FOR DESIGN LOAD CAPACITY OF DESIRED GLASS SIZE.
- STEP 3** CHECK MULLION CAPACITY FOR A GIVEN SPACING AND HEIGHT USING CHARTS ON SHEET 3 THE CAPACITY SHOULD EXCEED THE DESIGN LOAD.
- STEP 4** USING CHARTS ON SHEET 4 SELECT ANCHOR OPTION WITH DESIGN RATING MORE THAN DESIGN LOAD SPECIFIED IN STEP 1 ABOVE.
- STEP 5** THE LOWEST VALUE RESULTING FROM STEPS 2, 3 AND 4 SHALL APPLY TO ENTIRE SYSTEM.

THIS SYSTEM IS RATED FOR SMALL MISSILE IMPACT. MIAMI-DADE COUNTY APPROVED IMPACT RESISTANT SHUTTERS REQUIRED FOR INSTALLATIONS UP TO 30 FT. OF GRADE. SHUTTERS NOT REQD. FOR INSTALLATIONS ABOVE 30 FT. OF GRADE.

Engr: ARSHAD VIQAR  
CIVIL  
FLA. PE # 38863  
C.A.N. 3533  
JUL 08 2009

PRODUCT REVISED  
as complying with the Florida  
Building Code  
Acceptance No. 09-0720.10  
Registration Date NOV. 25, 2014  
By: *Manuel Perez*  
Miami-Dade Product Control  
Division

**AL-FAROOQ CORPORATION**  
ENGINEERS & PRODUCT DEVELOPMENT  
1235 S.W. 87 AVE.  
MIAMI, FLORIDA 33174  
TEL. (305) 264-8100 FAX. (305) 262-6978

PRO-TECH 45 ALUM WINDOW WALL SYSTEM (S.M.I.)  
**CRAWFORD TRACEY CORPORATION**  
3301 SW 13TH DRIVE  
DEERFIELD BEACH, FL. 33442-8101  
TEL. (954) 698-6888 FAX. (954) 698-6889

no	date	description
A	10.18.04	NO CHANGE THIS SHEET
B	06.31.05	UPDATED FOR 2004 FBC
C	07.02.09	UPDATED FOR 2007 FBC

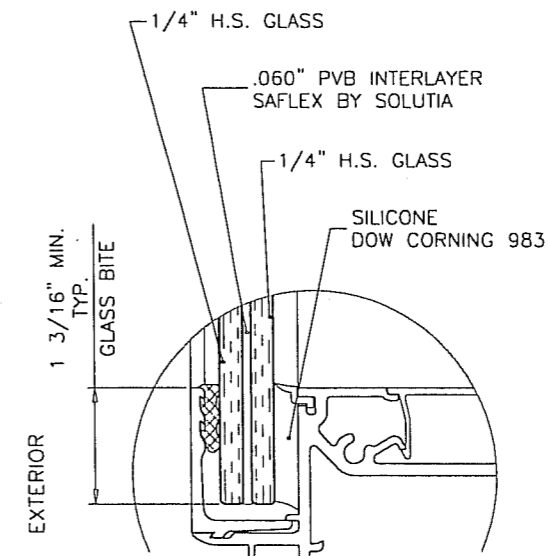
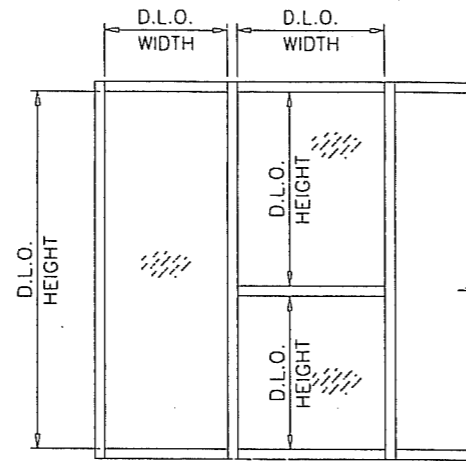
date: 08-06-04  
scale: 1/2" = 1'-0"  
dr. by: HAMID  
chk. by:

drawing no.  
**W04-70**

sheet 1 of 8

STORE W04-70CTC

GLASS LOAD CAPACITY - PSF		LAMINATED GLASS EXT.(+) & INT.(-)	
NOMINAL DIMS.			
D.L.O. WIDTH	D.L.O. HEIGHT		
56-1/2"	68-1/2"	80.0	
20"	74"	80.0	
26"		80.0	
32"		80.0	
38"		80.0	
44"		80.0	
50"		80.0	
51-1/4"	80"	80.0	
20"		80.0	
26"		80.0	
32"		80.0	
38"		80.0	
44"		80.0	
47-5/16"	86"	80.0	
20"		80.0	
26"		80.0	
32"		80.0	
44"		80.0	
20"	92"	80.0	
		26"	80.0
		32"	80.0
		38"	80.0
		41-1/4"	80.0
20"	98"	80.0	
		26"	80.0
		32"	80.0
		38"	80.0
		38-5/8"	80.0
20"	104"	80.0	
		26"	80.0
		32"	80.0
		36-7/16"	80.0
		20"	110"
26"	80.0		
32"	80.0		
34-7/16"	80.0		
20"	116"	80.0	
		26"	80.0
		32"	80.0
32-11/16"	120"	80.0	
20"		80.0	
26"	120"	80.0	
31-5/8"		80.0	



GLAZING DETAIL

NOTE:  
GLASS CAPACITIES ON THIS SHEET ARE  
BASED ON ASTM E1300-02/04 (3 SEC. GUSTS).

Engr: ARSHAD VIQAR  
CIVIL  
FLA. PE # 38863  
C.A.N. 3538  
JUL 08 2009

PRODUCT REVISED  
to comply with the Florida  
Building Code  
Acceptance No. 09-0720-10  
Expiration Date NOV. 25 2014  
By: *Manuel Pera*  
Miami Made Product Certified  
Division

**afcc**

**AL-FAROOQ CORPORATION**  
ENGINEERS & PRODUCT DEVELOPMENT  
1235 S.W. 87 AVE  
MIAMI, FLORIDA 33174  
TEL. (305) 264-8100 FAX. (305) 262-6978  
STORE W04-70CTC

---

PRO-TECH 45 ALUM WINDOW WALL SYSTEM (S.M.I.)

**CRAWFORD TRACEY CORPORATION**  
3301 SW 13TH DRIVE  
DEERFIELD BEACH, FL. 33442-8101  
TEL. (954) 698-6888 FAX. (954) 698-6889

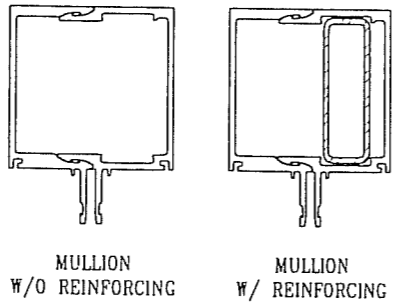
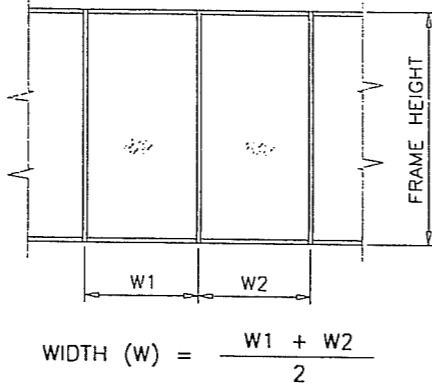
no	date	description
A	10.18.04	NO CHANGE THIS SHEET
B	06.31.05	NOTE ADDED
C	07.02.09	UPDATED FOR 2007. FBC

revisions:

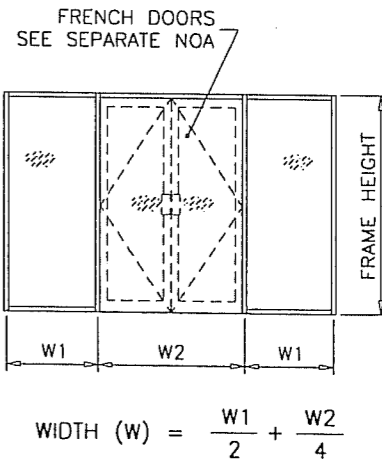
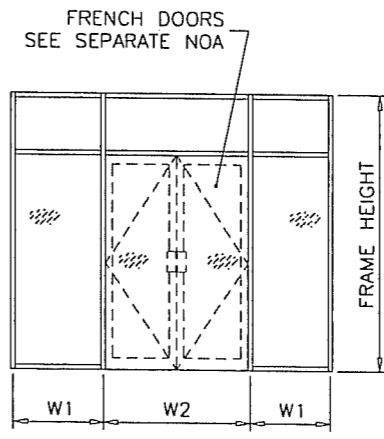
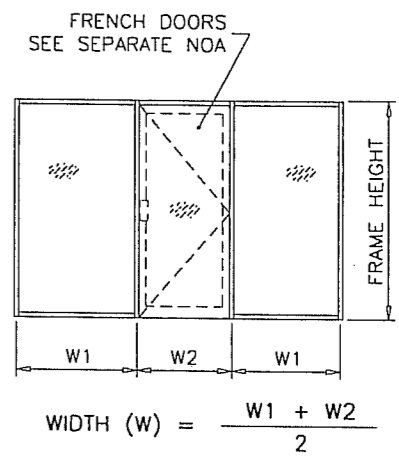
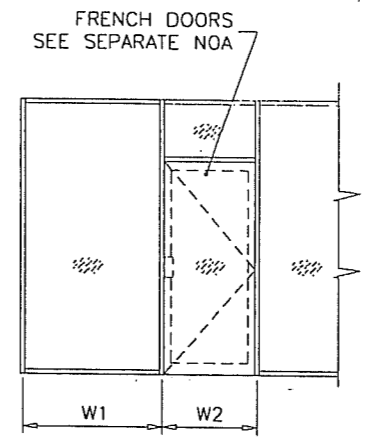
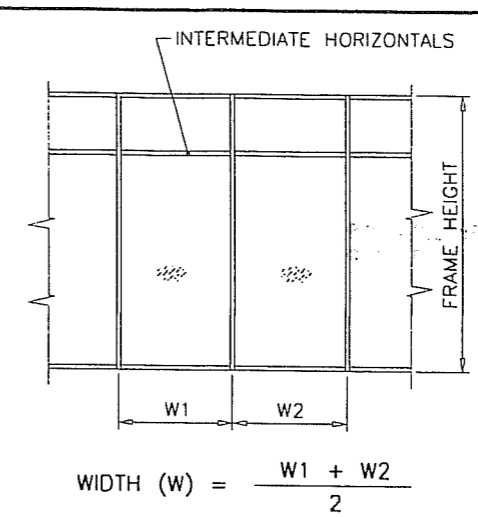
date: 08-06-04  
scale: 1/2" = 1"  
dr. by: HAMID  
chk. by:

drawing no. **W04-70**  
sheet 2 of 8

MULLION LOAD CAPACITY - PSF WITHOUT INTERMEDIATE HORIZONTALS			
NOMINAL DIMS.		WITHOUT REINFORCING	WITH REINFORCING
WIDTH (W)	FRAME HEIGHT	EXT.(+) & INT.(-)	EXT.(+) & INT.(-)
24"	78"	80.0	80.0
30"		80.0	80.0
36"		80.0	80.0
42"		80.0	80.0
48"		80.0	80.0
54"		80.0	80.0
60"		80.0	80.0
66"		80.0	80.0
72"	80.0	80.0	
24"	84"	80.0	80.0
30"		80.0	80.0
36"		80.0	80.0
42"		80.0	80.0
48"		80.0	80.0
54"		80.0	80.0
60"		80.0	80.0
66"		80.0	80.0
24"	90"	80.0	80.0
30"		80.0	80.0
36"		80.0	80.0
42"		80.0	80.0
48"		80.0	80.0
60"		80.0	80.0
24"	96"	80.0	80.0
30"		80.0	80.0
36"		80.0	80.0
42"		80.0	80.0
48"		80.0	80.0
60"		75.1	80.0
24"	102"	80.0	80.0
30"		80.0	80.0
36"		80.0	80.0
42"		80.0	80.0
48"		80.0	80.0
60"		69.5	80.0
24"	108"	-	80.0
30"		-	80.0
36"		-	80.0
42"		-	80.0
48"		-	80.0
60"		-	80.0
24"	114"	-	80.0
30"		-	80.0
36"		-	80.0
42"		-	80.0
48"		-	71.9
60"		-	80.0
24"	120"	-	80.0
30"		-	80.0
36"		-	79.3
42"		-	68.8
48"		-	61.2



MULLION LOAD CAPACITY - PSF WITH INTERMEDIATE HORIZONTALS OR MULLIONS WITH DOORS			
NOMINAL DIMS.		WITHOUT REINFORCING	WITH REINFORCING
WIDTH (W)	FRAME HEIGHT	EXT.(+) & INT.(-)	EXT.(+) & INT.(-)
24"	78"	80.0	80.0
30"		80.0	80.0
36"		80.0	80.0
42"		80.0	80.0
48"		80.0	80.0
54"		80.0	80.0
60"		80.0	80.0
66"		80.0	80.0
72"	77.9	80.0	
24"	84"	80.0	80.0
30"		80.0	80.0
36"		80.0	80.0
42"		80.0	80.0
48"		80.0	80.0
54"		80.0	80.0
60"		80.0	80.0
66"		72.8	80.0
24"	90"	80.0	80.0
30"		80.0	80.0
36"		80.0	80.0
42"		80.0	80.0
48"		80.0	80.0
60"		77.3	80.0
24"	96"	80.0	80.0
30"		80.0	80.0
36"		80.0	80.0
42"		80.0	80.0
48"		76.4	80.0
60"		67.9	80.0
24"	102"	80.0	80.0
30"		80.0	80.0
36"		80.0	80.0
42"		80.0	80.0
48"		79.0	80.0
60"		61.1	80.0
24"	108"	-	80.0
30"		-	80.0
36"		-	80.0
42"		-	80.0
48"		-	80.0
60"		-	80.0
24"	114"	-	80.0
30"		-	80.0
36"		-	80.0
42"		-	76.6
48"		-	67.0
60"		-	80.0
24"	120"	-	80.0
30"		-	80.0
36"		-	76.6
42"		-	65.7
48"		-	57.5



Engr: ARSHAD VIQAR  
CIVIL  
FLA. PE # 38863  
C.A.N. 3538  
JUL 08 2009

PRODUCT REVISIONS  
As complying with the Florida  
Building Code  
Assurance No. 09-0720-10  
Expiration Date NOV. 25, 2014

**AL-FAROOQ CORPORATION**  
ENGINEERS & PRODUCT DEVELOPMENT  
1235 S.W. 87 AVE  
MIAMI, FLORIDA 33174  
TEL. (305) 264-8100 FAX. (305) 262-6978  
STORE W04-70CTC

PRO-TECH 45 ALUM WINDOW WALL SYSTEM (S.M.I.)  
**CRAWFORD TRACEY CORPORATION**  
3301 SW 13TH DRIVE  
DEERFIELD BEACH, FL. 33442-8101  
TEL. (954) 698-6888 FAX. (954) 698-6889

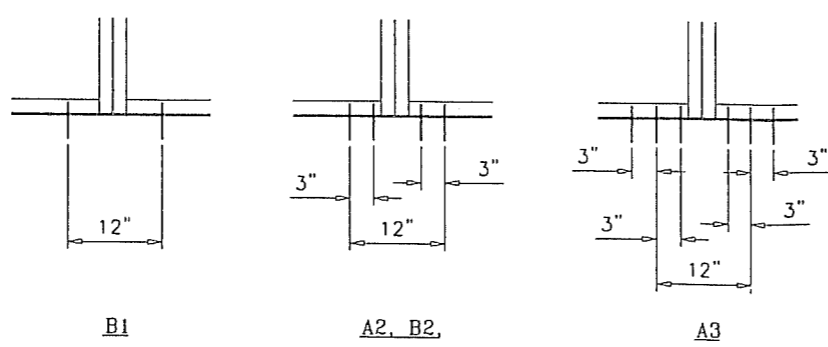
no	date	description
A	10.18.04	NO CHANGE THIS SHEET
B	08.31.05	CHARTS REV.
C	07.02.09	UPDATED FOR 2007 FBC

date: 08-06-04  
scale:  
dr. by: HAMID  
chk. by:

drawing no.  
**W04-70**

sheet 3 of 8

ANCHOR LOAD CAPACITY - PSF EXT.(+) & INT.(-)					
NOMINAL DIMS.		ANCHORS TYPE 'A'		ANCHORS TYPE 'B'	
WIDTH (W)	FRAME HEIGHT	A2	A3	B1	B2
24"	78"	80.0	80.0	80.0	80.0
30"		80.0	80.0	80.0	80.0
36"		80.0	80.0	80.0	80.0
42"		80.0	80.0	80.0	80.0
48"		80.0	80.0	80.0	80.0
54"		80.0	80.0	80.0	80.0
60"		80.0	80.0	80.0	80.0
66"		80.0	80.0	80.0	80.0
72"	80.0	80.0	80.0	80.0	
24"	84"	80.0	80.0	80.0	80.0
30"		80.0	80.0	80.0	80.0
36"		80.0	80.0	80.0	80.0
42"		80.0	80.0	80.0	80.0
48"		80.0	80.0	80.0	80.0
54"		80.0	80.0	80.0	80.0
60"		80.0	80.0	80.0	80.0
66"		80.0	80.0	80.0	80.0
24"	90"	80.0	80.0	80.0	80.0
30"		80.0	80.0	80.0	80.0
36"		80.0	80.0	80.0	80.0
42"		80.0	80.0	80.0	80.0
48"		80.0	80.0	80.0	80.0
54"		80.0	80.0	80.0	80.0
60"		80.0	80.0	80.0	80.0
66"		80.0	80.0	80.0	80.0
24"	96"	80.0	80.0	80.0	80.0
30"		80.0	80.0	80.0	80.0
36"		80.0	80.0	80.0	80.0
42"		80.0	80.0	80.0	80.0
48"		80.0	80.0	80.0	80.0
54"		80.0	80.0	80.0	80.0
60"		80.0	80.0	80.0	80.0
66"		80.0	80.0	80.0	80.0
24"	102"	80.0	80.0	80.0	80.0
30"		80.0	80.0	80.0	80.0
36"		80.0	80.0	80.0	80.0
42"		80.0	80.0	80.0	80.0
48"		80.0	80.0	80.0	80.0
54"		77.0	80.0	80.0	80.0
60"		80.0	80.0	80.0	80.0
66"		80.0	80.0	80.0	80.0
24"	108"	80.0	80.0	80.0	80.0
30"		80.0	80.0	80.0	80.0
36"		80.0	80.0	80.0	80.0
42"		80.0	80.0	80.0	80.0
48"		80.0	80.0	80.0	80.0
54"		80.0	80.0	80.0	80.0
60"		80.0	80.0	80.0	80.0
66"		80.0	80.0	80.0	80.0
24"	114"	80.0	80.0	80.0	80.0
30"		80.0	80.0	80.0	80.0
36"		80.0	80.0	80.0	80.0
42"		80.0	80.0	80.0	80.0
48"		77.0	80.0	80.0	80.0
54"		80.0	80.0	80.0	80.0
60"		80.0	80.0	80.0	80.0
66"		80.0	80.0	80.0	80.0
24"	120"	80.0	80.0	80.0	80.0
30"		80.0	80.0	80.0	80.0
36"		80.0	80.0	80.0	80.0
42"		80.0	80.0	80.0	80.0
48"		74.0	80.0	79.0	80.0
54"		80.0	80.0	80.0	80.0
60"		80.0	80.0	80.0	80.0
66"		80.0	80.0	80.0	80.0

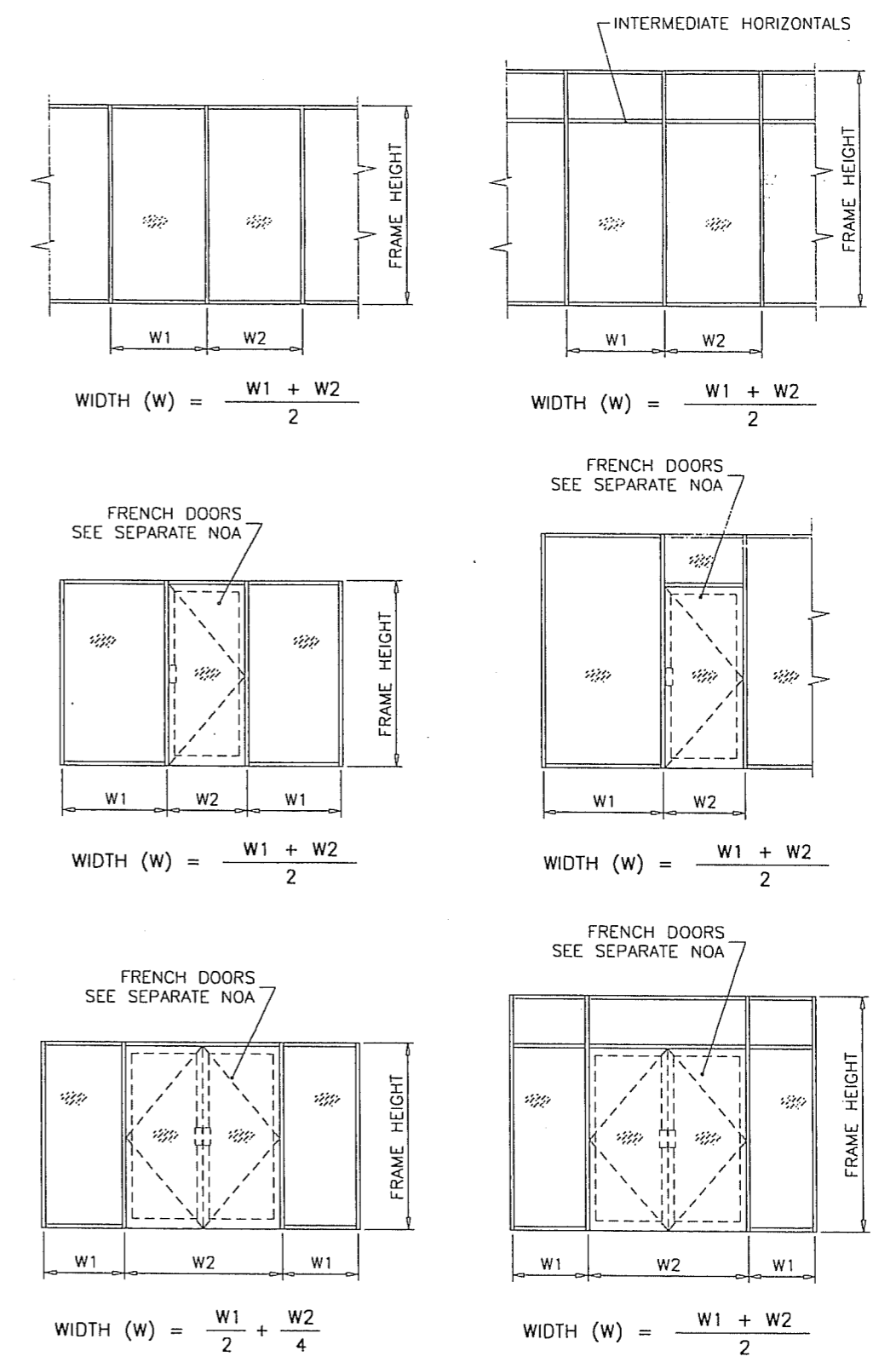


ANCHORS TYPES: SEE SHEET 5 FOR DESCRIPTION

A2 = (2) ANCHORS TYPE 'A' AT EACH SIDE OF MULLION  
A3 = (3) ANCHORS TYPE 'A' AT EACH SIDE OF MULLION

B1 = (1) ANCHOR TYPE 'B' AT EACH SIDE OF MULLION  
B2 = (2) ANCHORS TYPE 'B' AT EACH SIDE OF MULLION

ALL OTHER ANCHORS TO BE SPACED AS PER ELEVATION.



Engr: ARSHAD VIQAR  
CIVIL  
FLA. PE # 38863  
C.A.N. 3538

**PRODUCT REVISED**  
to comply with the Florida  
Building Code  
Approval No. 09-0720.10  
Expiration Date NOV. 25, 2014

By: *Marcus Perez*  
Florida Trade Product Council  
Division

JUL 08 2009

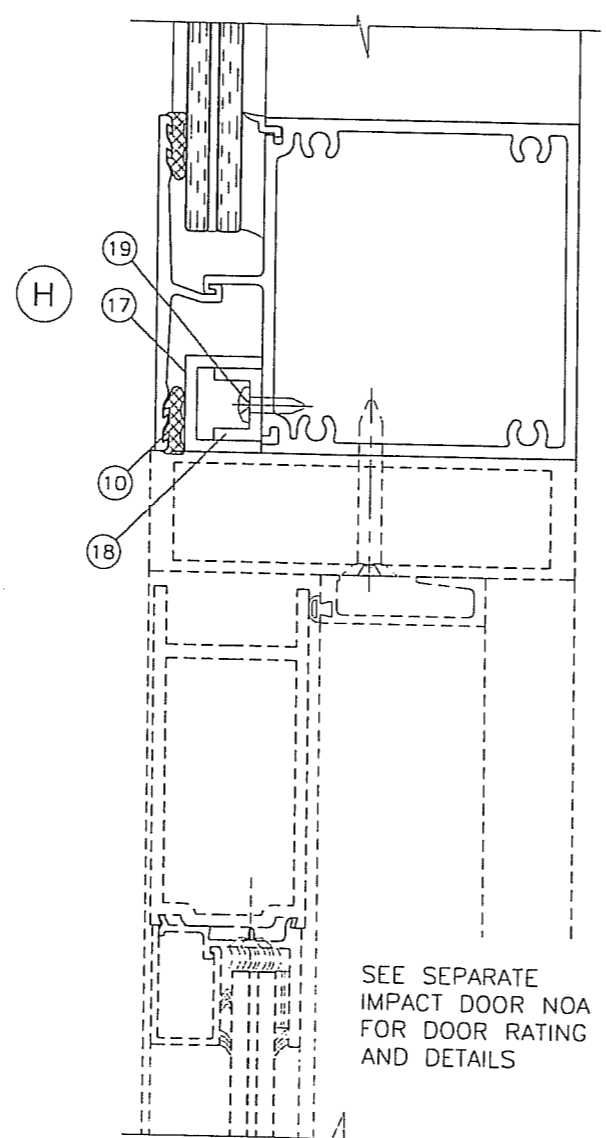
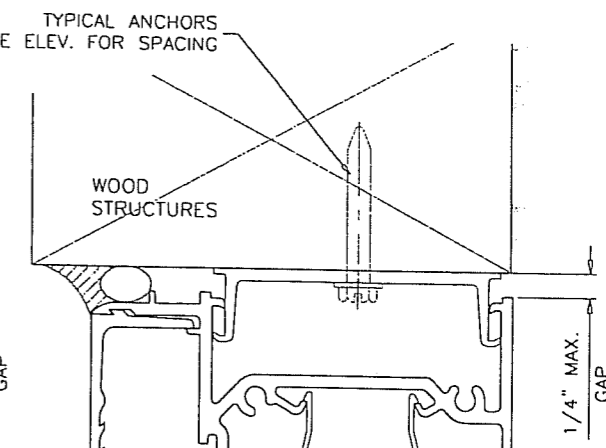
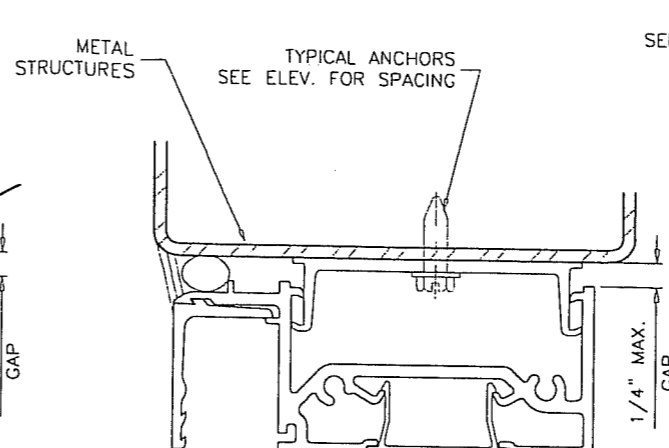
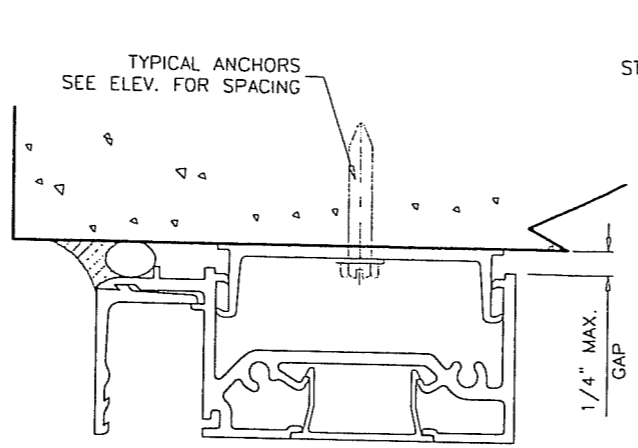
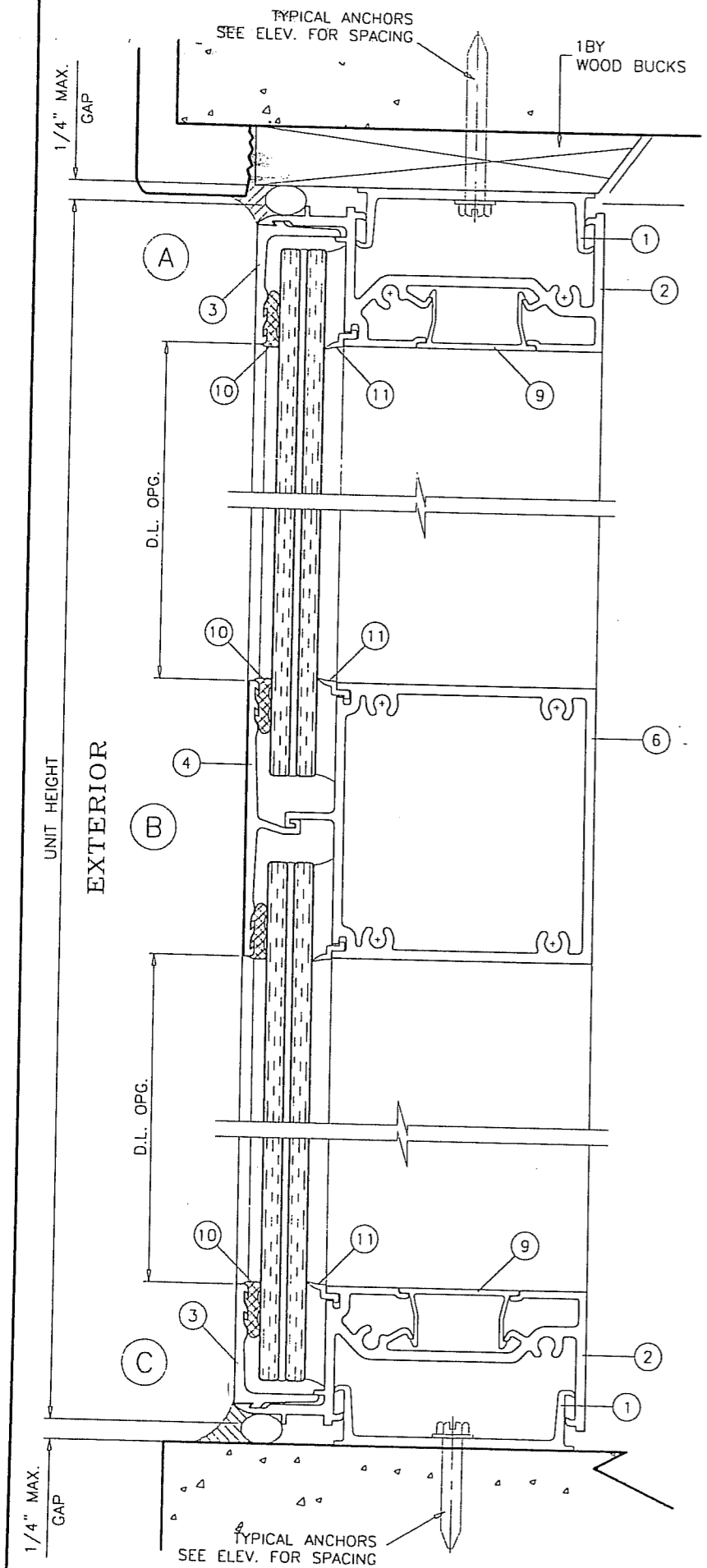
**AL-FAROOQ CORPORATION**  
ENGINEERS & PRODUCT DEVELOPMENT  
1235 S.W. 87 AVE  
MIAMI, FLORIDA 33174  
TEL. (305) 264-8100 FAX. (305) 262-6978  
STORE W04-70CTC

PRO-TECH 45 ALUM WINDOW WALL SYSTEM (S.M.I.)  
**CRAWFORD TRACEY CORPORATION**  
3301 SW 13TH DRIVE  
DEERFIELD BEACH, FL. 33442-8101  
TEL. (954) 698-6888 FAX. (954) 698-6889

no	date	by	description
A	10.18.04		NO CHANGE THIS SHEET
B	08.31.05		CHART REV.
C	07.02.09		UPDATED FOR 2007 FBC

date: 08-06-04  
scale:  
dr. by: HAMID  
chk. by:

drawing no.  
**W04-70**  
sheet 4 of 8



WOOD BUCKS NOT BY CRAWFORD TRACEY, MUST SUPPORT LOADS IMPOSED BY GLAZING SYSTEM AND TRANSFER THEM TO THE BUILDING STRUCTURE.

- TYPICAL ANCHORS:** SEE ELEV. FOR SPACING
- TYPE 'A' - 1/4" DIA. ULTRACON BY 'ELCO' ( $F_u=177$  KSI,  $F_y=155$  KSI)  
 INTO 2BY WOOD BUCKS OR WOOD STRUCTURES  
 1-3/8" MIN. PENETRATION INTO WOOD  
 THRU 1BY BUCKS INTO CONC. OR MASONRY  
 1-1/4" MIN. EMBED INTO CONC. OR MASONRY
  - TYPE 'B' - 1/4" DIA. ULTRACON BY 'ELCO' ( $F_u=177$  KSI,  $F_y=155$  KSI)  
 DIRECTLY INTO CONC. OR MASONRY  
 1-1/4" MIN. EMBED INTO CONC. OR MASONRY
  - TYPE 'B' - #14 SMS OR SELF DRILLING SCREWS (GRADE 2 CRS)  
 INTO METAL STRUCTURES  
 STEEL : 12 GA. MIN. ( $F_y = 36$  KSI MIN.)  
 ALUMINUM : 1/8" THK. MIN. (6063-T5 MIN.)  
 (STEEL IN CONTACT WITH ALUMINUM TO BE PLATED OR PAINTED)
- TYPICAL EDGE DISTANCE**
- INTO CONCRETE AND MASONRY = 2-1/2" MIN.
  - INTO WOOD STRUCTURE = 1" MIN.
  - INTO METAL STRUCTURE = 3/4" MIN.
- CONCRETE  $f'_c = 3000$  PSI MIN.  
 C-90 HOLLOW/FILLED BLOCK  $f'_m = 2000$  PSI MIN.

**AL-FAROOQ CORPORATION**  
 ENGINEERS & PRODUCT DEVELOPMENT  
 1235 S.W. 87 AVE  
 MIAMI, FLORIDA 33174  
 TEL. (305) 264-8100 FAX. (305) 262-6978  
 STORE W04-70CTC

PRO-TECH 45 ALUM WINDOW WALL SYSTEM (S.M.I.)  
**CRAWFORD TRACEY CORPORATION**  
 3301 SW 13TH DRIVE  
 DEERFIELD BEACH, FL. 33442-8101  
 TEL. (954) 698-6888 FAX. (954) 698-6889

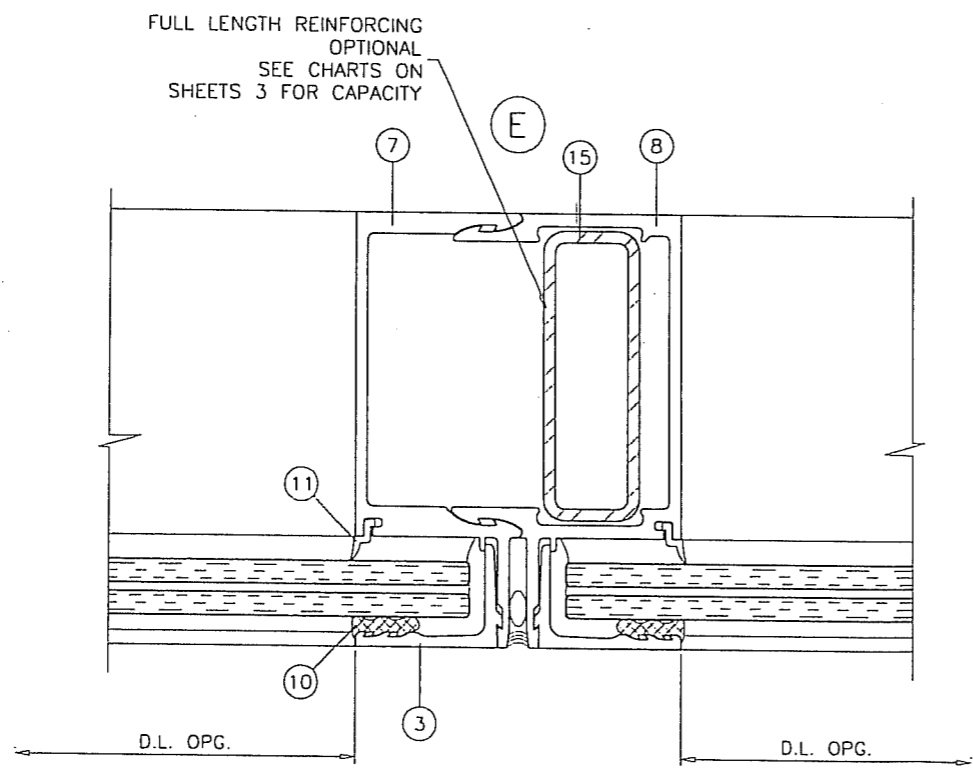
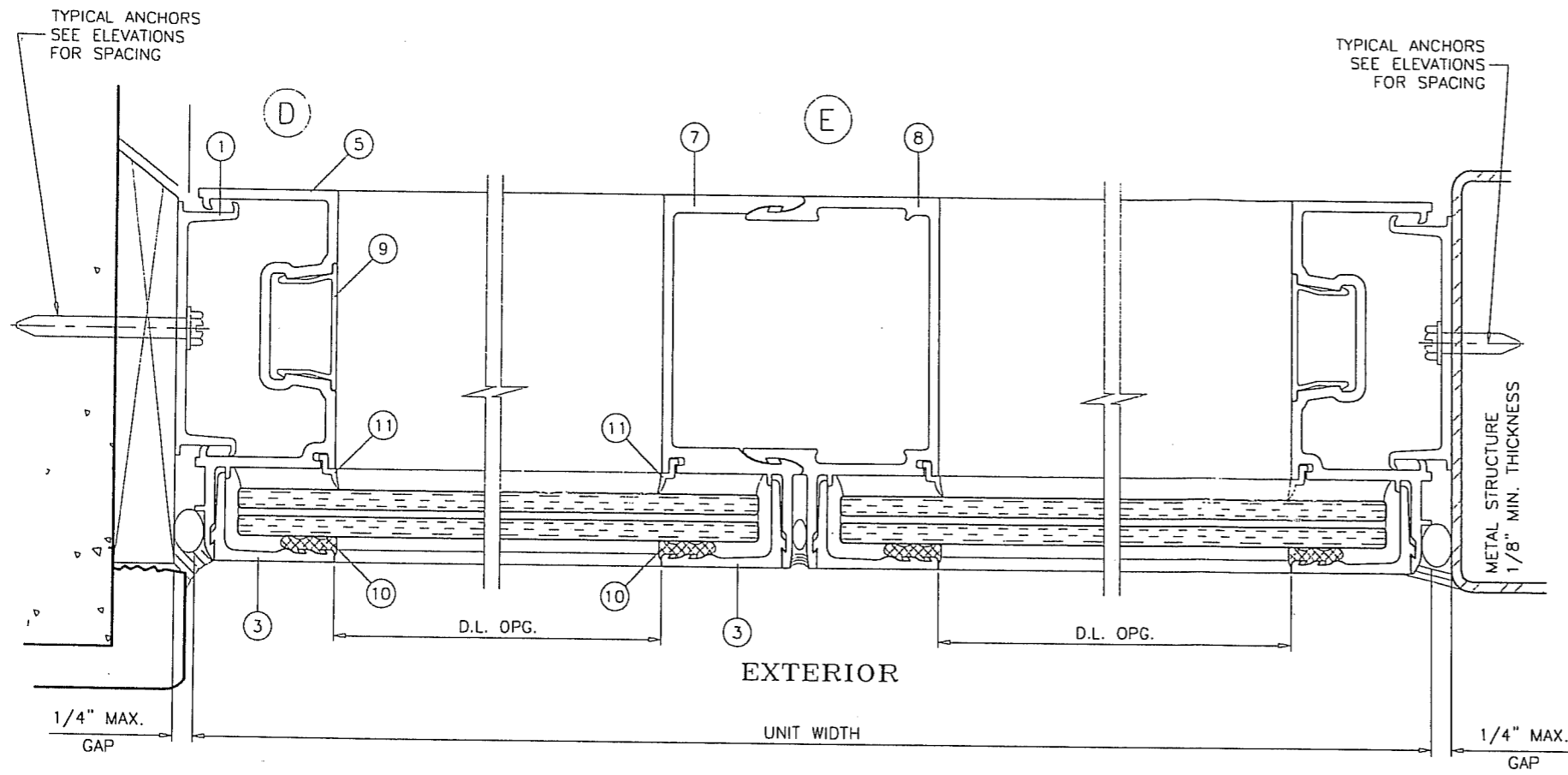
NO.	DATE	DESCRIPTION
A	10.18.04	NO CHANGE THIS SHEET
B	08.31.05	METAL STRUCTURE REV.
C	07.02.09	UPDATED FOR 2007 FBC

date:	08-08-04
scale:	1/2" = 1"
dr. by:	HAMID
chk. by:	

Engr: ARSHAD VIOAR  
 CIVIL  
 FLA. PE # 38863  
 C.A.N. 3538  
 JUL 08 2009

PRODUCT REVIEWED  
 in compliance with the Florida  
 Building Code  
 Acceptance No. 09-0720-10  
 Expiration Date NOV. 25, 2014  
 By: *Manuel Perez*

drawing no.  
**W04-70**  
 sheet 5 of 8



**afc**

**AL-FAROOQ CORPORATION**  
 ENGINEERS & PRODUCT DEVELOPMENT  
 1235 S.W. 87 AVE  
 MIAMI, FLORIDA 33174  
 TEL. (305) 264-8100 FAX. (305) 262-6978

PRO-TECH 45 ALUM WINDOW WALL SYSTEM (S.M.I.)

**CRAWFORD TRACEY CORPORATION**  
 3301 SW 13TH DRIVE  
 DEERFIELD BEACH, FL. 33442-8101  
 TEL. (954) 698-6888 FAX. (954) 698-6889

no	date	by	description
A	10.18.04		NO CHANGE THIS SHEET
B	08.31.05		NO CHANGE THIS SHEET
C	07.02.09		UPDATED FOR 2007 FBC

date: 08-06-04  
 scale: 1/2" = 1"  
 dr. by: HAMID  
 chk. by:

drawing no.  
**W04-70**  
 sheet 6 of 8

Engr: ARSHAD VIQAR  
 CIVIL  
 FLA. PE # 38863  
 C.A.N. 3538

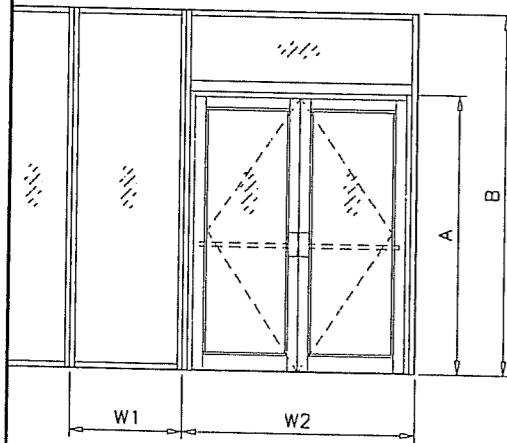
*[Signature]*

JUL 08 2009

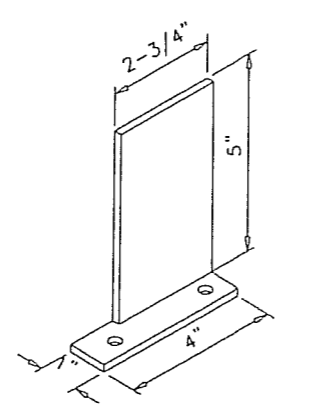
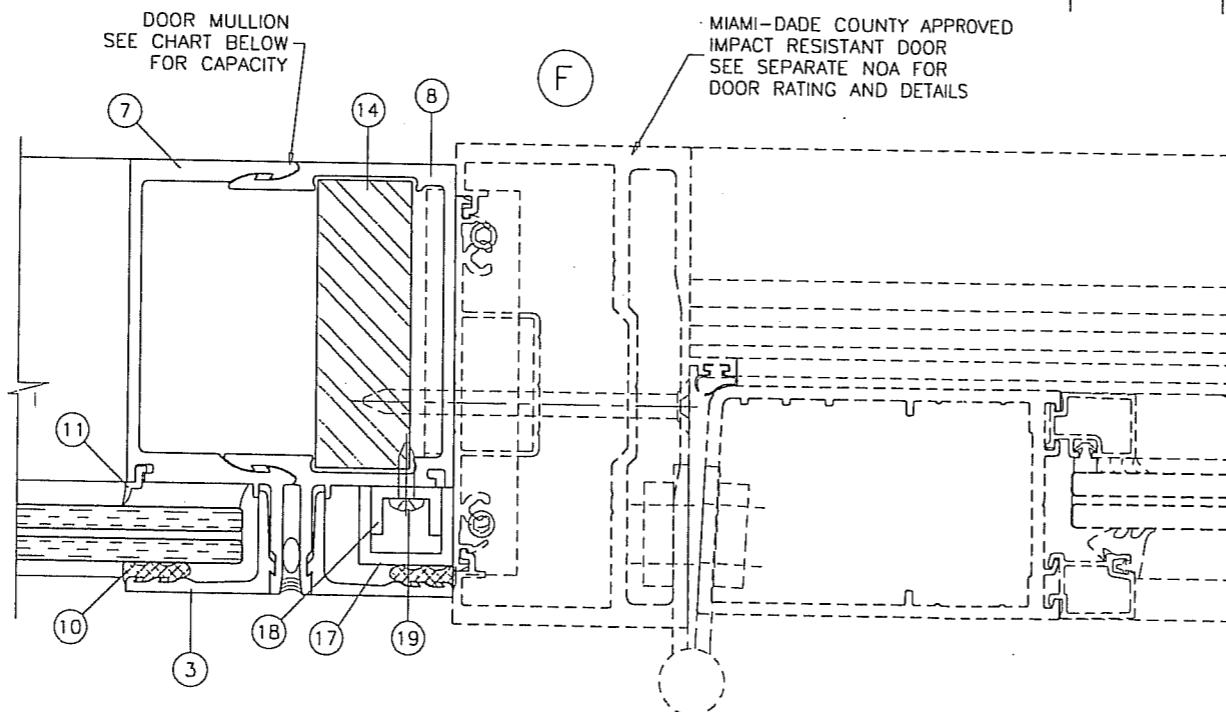
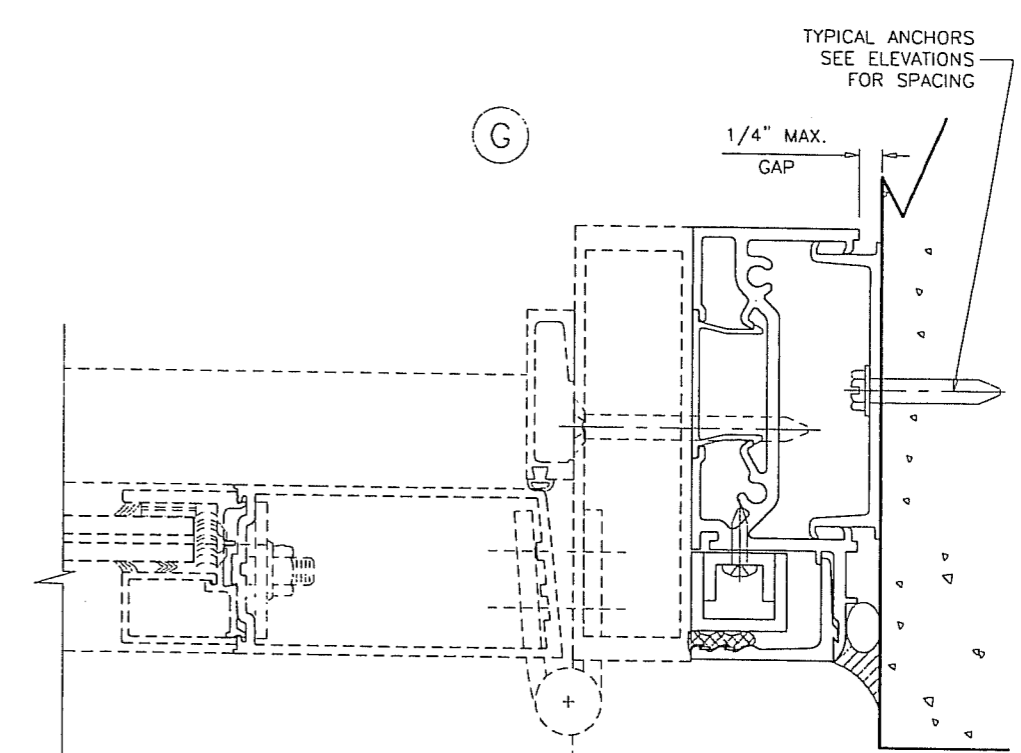
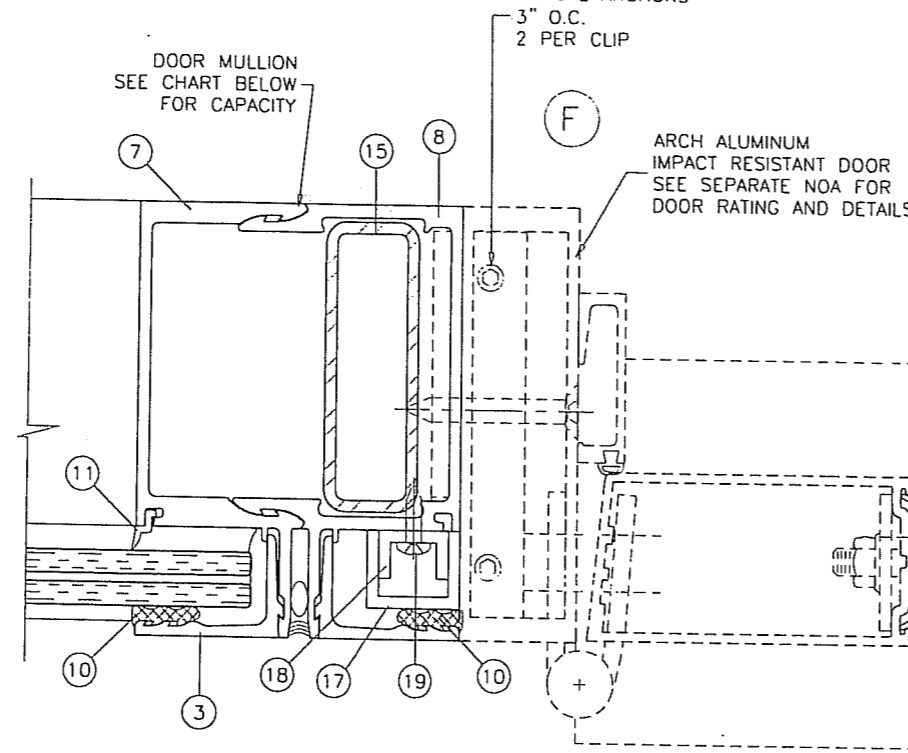
PRODUCT REVISED  
 as complying with the Florida  
 Building Code  
 Acceptance No. 09-0720-10  
 Expiration Date NOV. 25, 2014

*[Signature]*  
 Project Control  
 Director

STORE\W04-70CTC



DOOR MULLION DESIGN LOAD CAPACITY - PSF				
FRAME HEIGHT-B INCHES MAX.	DOOR HEIGHT-A INCHES MAX.	WIDTH-W1 INCHES MAX.	WIDTH-W2 INCHES MAX.	EXT. (+) INT. (-)
120	96	36	78	80.0
	90			80.0
	84			77.6
	80			74.5
114	96	40	78	80.0
	80			80.0
108	96	46	78	80.0
	80			80.0
102	96	52	78	80.0
	80			80.0



DOOR MULLION INSTALLATION CLIP  
1 X 5 X 3/16" ALUM ANGLE

**AL-FAROOQ CORPORATION**  
ENGINEERS & PRODUCT DEVELOPMENT  
1235 S.W. 87 AVE  
MIAMI, FLORIDA 33174  
TEL. (305) 264-8100 FAX. (305) 262-6978  
STORE W04-70CTC

PRO-TECH 45 ALUM WINDOW WALL SYSTEM (S.M.I.)  
**CRAWFORD TRACEY CORPORATION**  
3301 SW 13TH DRIVE  
DEERFIELD BEACH, FL. 33442-8101  
TEL. (954) 698-6888 FAX. (954) 698-6889

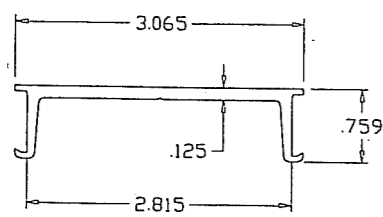
no	date	description
A	10.18.04	REV. PER BECCO COMMENTS
B	08.31.05	NO CHANGE THIS SHEET
C	07.02.09	UPDATED FOR 2007 FBC

date: 08-06-04  
scale: 1/2" = 1"  
dr. by: HAMID  
chk. by:

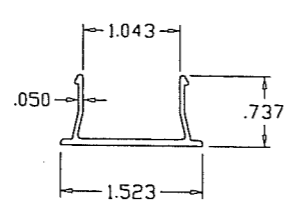
Engr: ARSHAD VIQAR  
CIVIL  
FLA. PE # 38863  
C.A.N. 3538  
JUL 08 2009

PRODUCT REVIEWED  
in compliance with the Florida  
Building Code  
Acceptance No. 09-0720.10  
Expiration Date NOV. 25, 2014  
By: *Mansour*  
Miami-Dade Product Control  
Division

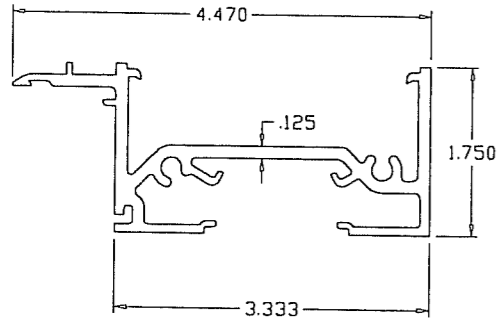
drawing no.  
**W04-70**  
sheet 7 of 8



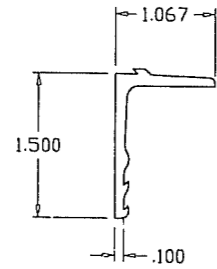
① SUB BUCK



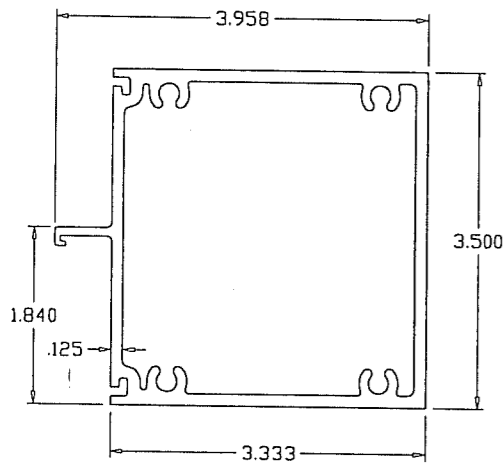
⑨ SNAP-IN COVER



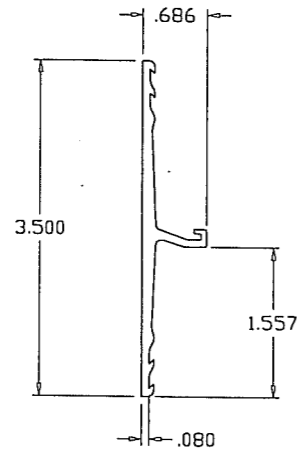
② FRAME HEAD/SILL



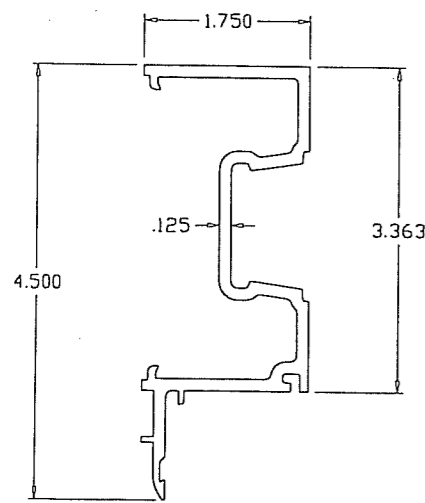
③ GLAZING RETAINER (HEAD/JAMB/SILL)



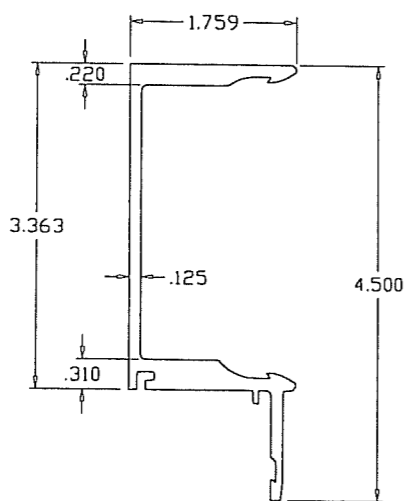
⑥ FRAME HORIZONTAL



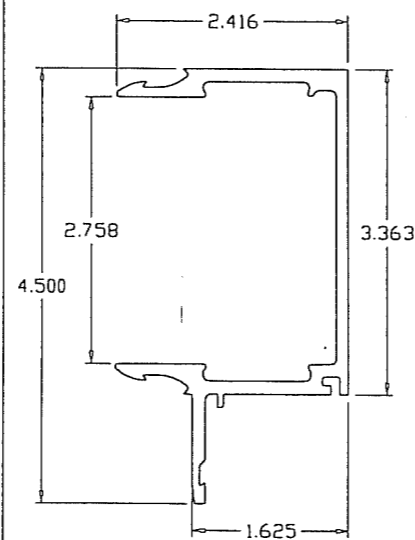
④ GLAZING RETAINER (HORIZONTAL)



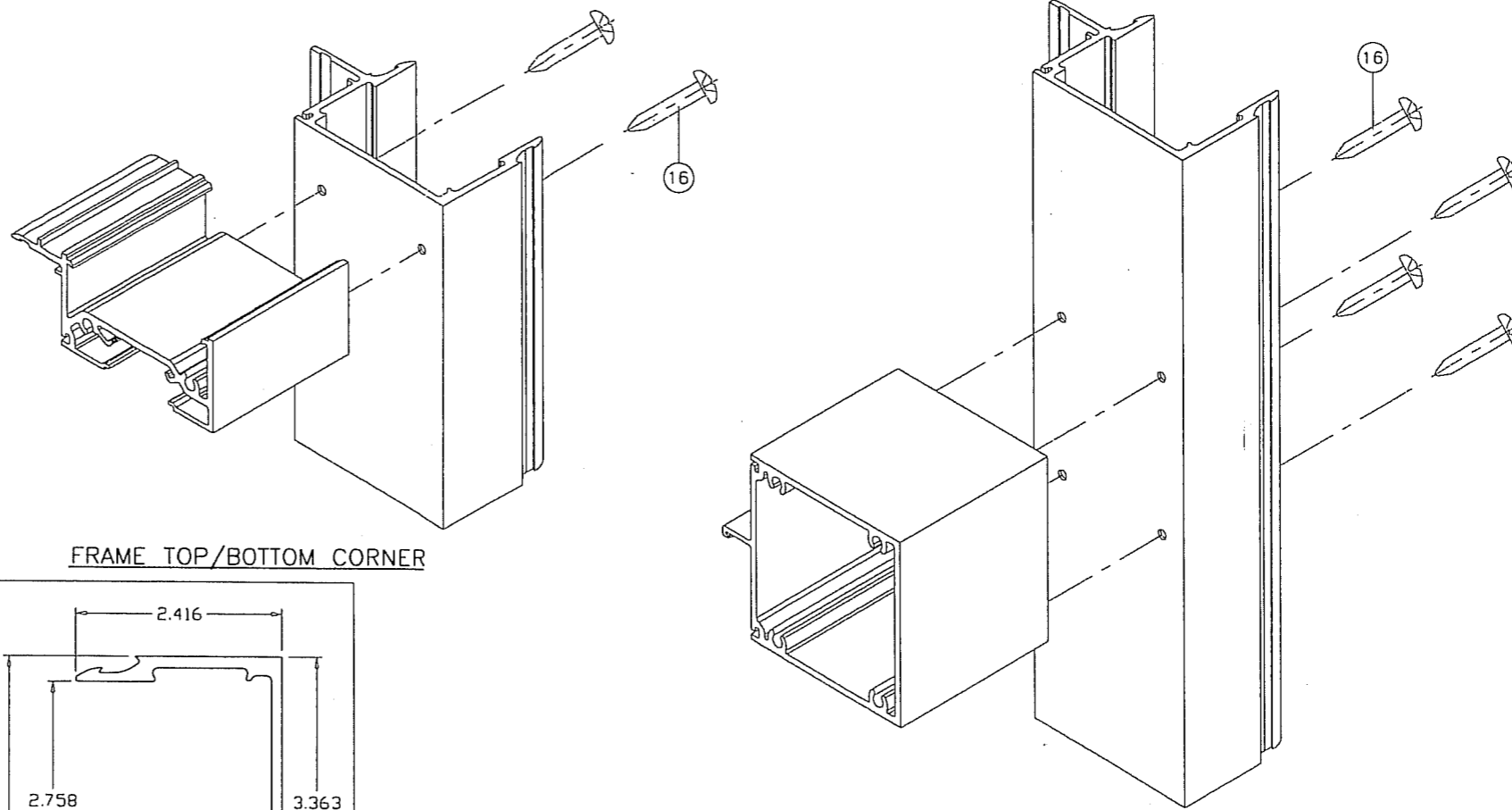
⑤ FRAME JAMB



⑦ FEMALE MULLION



⑧ MALE MULLION



FRAME TOP/BOTTOM CORNER

FRAME HORIZONTAL CORNER

ITEM NO.	PART NUMBER	QUANTITY	DESCRIPTION	MATERIAL	MANF./SUPPLIER/REMARKS
1	B44B001	AS REQD.	SUB BUCK	6105-T5	-
2	144P175	AS REQD.	FRAME HEAD/SILL	6063-T6	-
3	162F111	AS REQD.	GLAZING RETAINER (HEAD/SILL/JAMB)	6063-T6	-
4	162F340	AS REQD.	GLAZING RETAINER (HORIZONTAL)	6063-T6	-
5	144J175	AS REQD.	FRAME JAMB	6063-T6	-
6	144H301	AS REQD.	HORIZONTAL	6063-T6	-
7	144M112	AS REQD.	FEMALE MULLION	6063-T6	-
8	144M111	AS REQD.	MALE MULLION	6063-T6	-
9	T44U119	AS REQD.	SNAP-IN COVER	6063-T6	-
10	#5	AS REQD.	EXTERIOR GLAZING GASKET	POLYPROPYLENE	-
11	#2	AS REQD.	INTERIOR GLAZING GASKET	POLYPROPYLENE	-
12	-	-	-	-	-
13	983	-	GLAZING COMPOUND	SILICONE	DOW CORNING
14	-	AS REQD.	STEEL BAR, FULL LENGTH	STEEL	1" X 3"
15	-	AS REQD.	REINFORCING TUBE, FULL LENGTH	STEEL	1 X 3 X 11 GA.
16	#14 X 1-1/4"	AS REQD.	FRAME ASSEMBLY SCREWS	ST. STEEL	P.H. SMS
17	-	AS REQD.	FILLER CHANNEL	ALUMINUM	13/16 X 1 X 13/16 X 1/8"
18	-	AS REQD.	FILLER CHANNEL	ALUMINUM	1/2 X 3/4 X 1/2 X 1/8"
19	#10 X 1"	AS REQD.	FILLER CHANNEL SCREWS	AT. STEEL	AT 14" O.C.

Engr: ARSHAD VIQAR  
 CIVIL  
 FLA. PE # 38863  
 C.A.N. 3538  
 JUL 08 2009

PRODUCT REVIEWED  
 as complying with the Florida  
 Building Code  
 Acceptance No. 09-0720.10  
 Expiration Date NOV. 25, 2014  
 By: *Manuel Perez*  
 Director/Field Product Control

**af c**  
**AL-FAROOQ CORPORATION**  
 ENGINEERS & PRODUCT DEVELOPMENT  
 1235 S.W. 87 AVE  
 MIAMI, FLORIDA 33174  
 TEL. (305) 264-8100 FAX. (305) 262-6978  
 STORE W04-70CTC

PRO-TECH 45 ALUM WINDOW WALL SYSTEM (S.M.I.)  
**CRAWFORD TRACEY CORPORATION**  
 3301 SW 13TH DRIVE  
 DEERFIELD BEACH, FL. 33442-8101  
 TEL. (954) 698-6888 FAX. (954) 698-6889

no	date	description
A	10.18.04	NO CHANGE THIS SHEET
B	08.31.05	NO CHANGE THIS SHEET
C	07.02.09	UPDATED FOR 2007 FBC

date: 08-06-04  
 scale: 1/2" = 1"  
 dr. by: HAMID  
 chk. by:

drawing no.  
**W04-70**  
 sheet 8 of 8

WHITE. PT 455A  
 HD 151X  
 AD. III III

@OMBS . 84" . 11  
 66" - 1111

Maus . 84" . 1  
 64 . 1

1 3/4" ARS .  
 AD" . III III III  
 84" . 11  
 66" . III

3/2" ARS -  
 84" . 1  
 64" . III  
 AD" . III III III  
 20" . III