



BUILDING CODE COMPLIANCE OFFICE (BCCO)  
PRODUCT CONTROL DIVISION

MIAMI-DADE COUNTY, FLORIDA  
METRO-DADE FLAGLER BUILDING  
140 WEST FLAGLER STREET, SUITE 1603  
MIAMI, FLORIDA 33130-1563  
(305) 375-2901 FAX (305) 375-2908  
www.buildingcodeonline.com

**NOTICE OF ACCEPTANCE (NOA)**

**Crawford Tracy Corporation**  
3301 S. W. 13 th Drive  
DeerField Beach, Fl. 33442

**SCOPE:**

This NOA is being issued under the applicable rules and regulations governing the use of construction materials. The documentation submitted has been reviewed by Miami-Dade County Product Control Division and accepted by the Board of Rules and Appeals (BORA) to be used in Miami Dade County and other areas where allowed by the Authority Having Jurisdiction (AHJ).

This NOA shall not be valid after the expiration date stated below. The Miami-Dade County Product Control Division (In Miami Dade County) and/or the AHJ (in areas other than Miami Dade County) reserve the right to have this product or material tested for quality assurance purposes. If this product or material fails to perform in the accepted manner, the manufacturer will incur the expense of such testing and the AHJ may immediately revoke, modify, or suspend the use of such product or material within their jurisdiction. BORA reserves the right to revoke this acceptance, if it is determined by Miami-Dade County Product Control Division that this product or material fails to meet the requirements of the applicable building code.

This product is approved as described herein, and has been designed to comply with the Florida Building Code, including the High Velocity Hurricane Zone of the Florida Building Code.

**DESCRIPTION: Series "Pro-Tech 7SG" Aluminum Glazed Curtain Wall System-SM Impact**

**APPROVAL DOCUMENT:** Drawing No. **W04-104**, titled "Pro-Tech 7SG Alum Curtain Wall System (SMI)" Sheets 1 through 13 of 13, dated 05/25/04 and last revised on 02-09-2006, prepared by Al-Farooq Corporation, signed and sealed by Dr. Humayoun Farooq, P. E., bearing the Miami-Dade County Product Control Approval stamp with the Notice of Acceptance number and approval date by the Miami-Dade County Product Control Division.

**MISSILE IMPACT RATING: Small Missile Impact Resistant**

**Limitation: Units to be used above 30 feet above the grade**

**LABELING:** Each unit shall bear a permanent label with the manufacturer's name or logo, city, state and following statement: "Miami-Dade County Product Control Approved", unless otherwise noted herein.

**RENEWAL** of this NOA shall be considered after a renewal application has been filed and there has been no change in the applicable building code negatively affecting the performance of this product.

**TERMINATION** of this NOA will occur after the expiration date or if there has been a revision or change in the materials, use, and/or manufacture of the product or process. Misuse of this NOA as an endorsement of any product, for sales, advertising or any other purposes shall automatically terminate this NOA. Failure to comply with any section of this NOA shall be cause for termination and removal of NOA.

**ADVERTISEMENT:** The NOA number preceded by the words Miami-Dade County, Florida, and followed by the expiration date may be displayed in advertising literature. If any portion of the NOA is displayed, then it shall be done in its entirety.

**INSPECTION:** A copy of this entire NOA shall be provided to the user by the manufacturer or its distributors and shall be available for inspection at the job site at the request of the Building Official.

This NOA consists of this page 1 and evidence page E-1, as well as approval document mentioned above.

The submitted documentation was reviewed by **Ishaq I. Chanda, P.E.**



**NOA No 05-0301.02**  
**Expiration Date: March 02, 2011**  
**Approval Date: March 02 2006**

9  
2/10/06

Crawford Tracy Corporation.

**NOTICE OF ACCEPTANCE: EVIDENCE SUBMITTED**

**A. DRAWINGS**

1. Manufacturer's die drawings and sections.
2. Drawing No. **W04-104**, titled "Pro-Tech 7SG Alum Curtain Wall System (LMI)" Sheets 1 through 13 of 13, dated 05/25/04 and last revised on 02-09-2006, prepared by Al-Farooq Corporation, signed and sealed by Dr. Humayoun Farooq, P. E.

**B. TESTS**

1. Test reports on
  - 1) Air Infiltration Test, per TAS 202-94
  - 2) Uniform Static Air Pressure Test, Loading per TAS 202-94
  - 3) Water Resistance Test, per TAS 202-94
  - 4) Small Missile Impact Test, TAS 201-94
  - 5) Large Missile Impact Test, TAS 201-94
  - 6) Cyclic Loading Test, per TAS 203-94

Along with installation diagram of aluminum glazed curtain wall system marked-up by American Test Lab of South Florida, **ATL 0217.01-04 (SMI)** dated 08-23-04 and revised by addendum letter dated 01-30-06 and Test Report No. **ATL 0315.01-04 (LMI)** dated 08-19-04, both signed and sealed by William R. Mehner, P.E. & Henry Hatem, P. E.

2. Additional Test reports on
  - 1) Uniform Static Air Pressure Test, Loading per TAS 202-94
  - 2) Small Missile Impact Test, TAS 201-94
  - 3) Large Missile Impact Test, TAS 201-94
  - 4) Cyclic Loading Test, per TAS 203-94

Along with installation diagram of aluminum glazed curtain wall system marked-up by American Test Lab of South Florida, Test Report No. **ATL 0419.02-04 (SMI)** dated 08-19-04 and Test Report No. **ATL 1129.01-04 (LMI)** dated 08-19-04 and revised by addendum letter dated 01-30-06, both signed & sealed by William R. Mehner, P.E. & Henry Hatem, P. E.

**C. CALCULATIONS:**

1. Anchor calculations and structural analysis, dated 12-21-04 and revised on 02-09-2006 & 2-21-2006, prepared by Al-Farooq Corporation, signed and sealed by Dr. Humayoun Farooq, P. E

**D. QUALITY ASSURANCE BY:**

1. Miami-Dade County Code Compliance Office (BCCO)

**E. MATERIAL CERTIFICATIONS**

1. Notice of Acceptance No. **01-0205.02** issued to Solutia Inc. for ".Saflex / Keep Safe Max", expiring on 05/21/06.

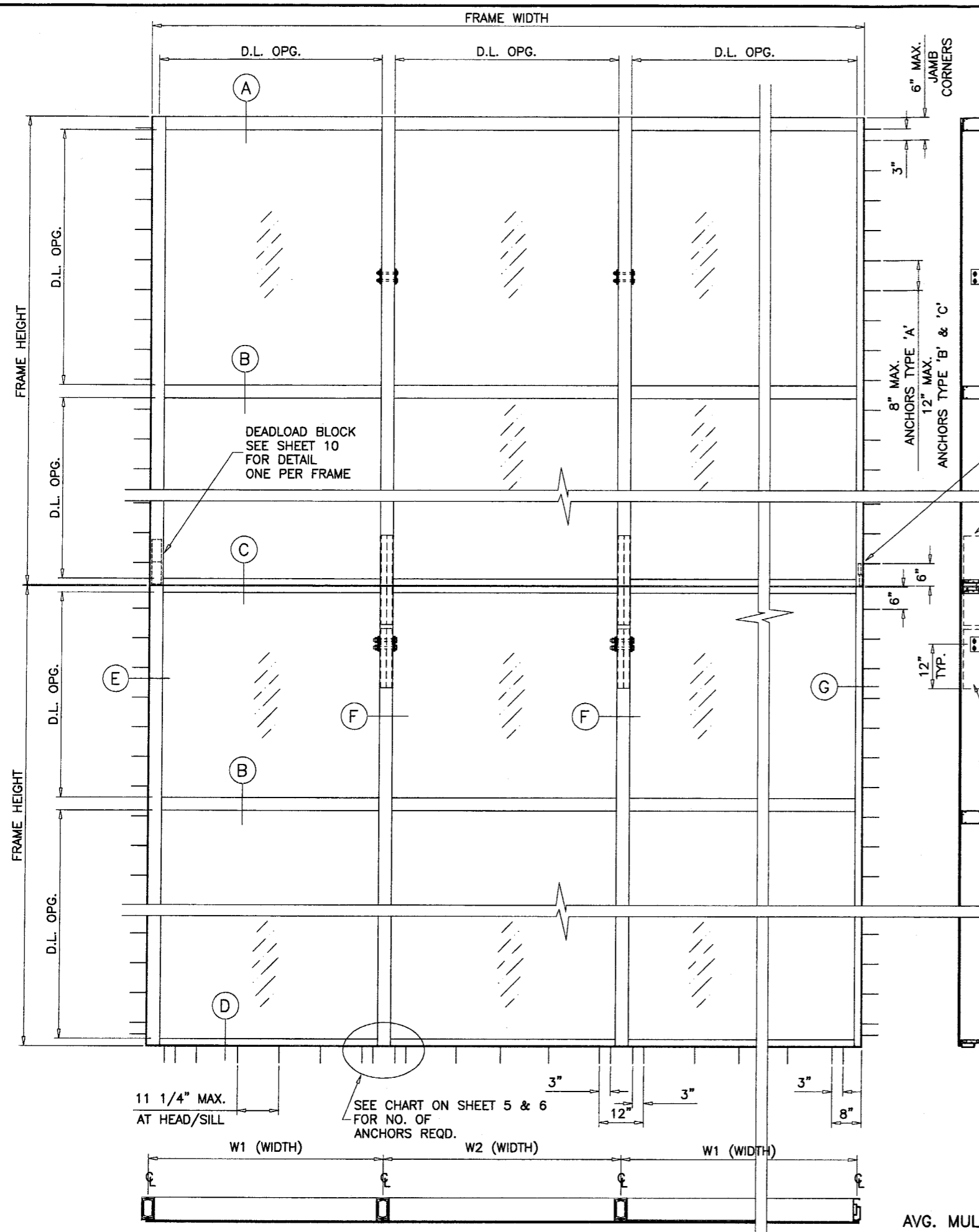
**F. STATEMENTS**

1. Statement letter of conformance, dated 08-23-05, signed by Dr. Humayoun Farooq, P. E.
2. Statement letter of "No financial interest", dated 10-17-05, signed by Dr. Humayoun Farooq, P. E.
3. Letters of compliance, (statements of compliance stated in above test reports)

**G. OTHER**

1. Test proposal from ATLSF dated 11/06/2003, approved by BCCO.

Ishaq I. Chanda  
Ishaq I. Chanda, P.E.  
Product Control Examiner  
NOA No 05-0301.02  
Expiration Date: March 02, 2011  
Approval Date: March 02, 2006



SEE SHEETS 11&12 FOR DETAILS

FRAME HORIZONTAL

DEADLOAD BLOCK SEE SHEET 10 FOR DETAIL ONE PER FRAME

SPLICE 24" LONG MIN.

EXPANSION JOINT

SEE SHEET 11&12 FOR DETAILS

SPLICE REINF. 16" LONG AT ANCHOR LOCATION

6" MAX. JAMB CORNERS

3"

8" MAX. ANCHORS TYPE 'A'

12" MAX. ANCHORS TYPE 'B' & 'C'

6"

6"

12" TYP.

**PRO-TECH 7SG ALUM CURTAIN WALL SYSTEM**

THIS PRODUCT RATED FOR SMALL MISSILE IMPACT. MIAMI-DADE COUNTY APPROVED IMPACT RESISTANT SHUTTERS REQUIRED FOR INSTALLATIONS UP TO 30 FT. OF GRADE. SHUTTERS NOT REQD. FOR INSTALLATIONS ABOVE 30 FT. OF GRADE. SEE SHEETS 2 THRU 6 FOR DESIGN LOAD RATING. CODE REQUIREMENTS FOR SAFEGUARDS MUST BE OBSERVED.

THIS PRODUCT HAS BEEN DESIGNED AND TESTED TO COMPLY WITH THE REQUIREMENTS OF THE FLORIDA BUILDING CODE 2004 EDITION INCLUDING HIGH VELOCITY HURRICANE ZONE. WOOD BUCKS BY OTHERS, MUST BE ANCHORED PROPERLY TO TRANSFER LOADS TO THE STRUCTURE. ANCHORS SHALL BE AS LISTED, SPACED AS SHOWN ON DETAILS, ANCHORS EMBEDMENT TO BASE MATERIAL SHALL BE BEYOND WALL DRESSING OR STUCCO. ANCHORING OR LOADING CONDITIONS NOT SHOWN IN THESE DETAILS ARE NOT PART OF THIS APPROVAL. A LOAD DURATION INCREASE IN ALLOWABLE STRESS IS USED IN DESIGN OF WOOD ANCHORS ONLY. ALL STEEL IN CONTACT WITH ALUMINUM TO BE PAINTED OR PLATED.

**INSTRUCTIONS:**

USE CHARTS AS FOLLOWS.

- STEP 1** DETERMINE DESIGN WIND LOAD REQUIREMENT BASED ON WIND VELOCITY, BLDG. HEIGHT, WIND ZONE USING APPLICABLE ASCE 7 STANDARD.
- STEP 2** CHECK MULLION CAPACITY FOR A GIVEN SPACING AND HEIGHT USING CHARTS ON SHEET 2 FOR SINGLE SPANS, AND CHARTS ON SHEET 3 FOR EQUAL MULTIPLE SPANS.
- STEP 3** SEE CHARTS ON SHEET 4 FOR DESIGN LOAD CAPACITY OF DESIRED GLASS SIZE BASED ON APPLICABLE WIND DURATION.
- STEP 4** USING CHART ON SHEET 5 & 6 SELECT ANCHOR OPTION WITH DESIGN RATING MORE THAN DESIGN LOAD SPECIFIED IN STEP 1 ABOVE.
- STEP 5** THE LOWEST VALUE RESULTING FROM STEPS 2, 3 AND 4 SHALL APPLY TO ENTIRE SYSTEM.

Approved as complying with the Florida Building Code  
 Date MARCH 02, 2006  
 NOAH 05-0301.02  
 Miami Dade Product Control Division  
 By (Shaq) L. Chaudh

LAMINATED GLASS  
 SMALL MISSILE IMPACT

Engr. DR. HUMAYOUN FAROOQ  
 STRUCTURES  
 FLA. PE # 16557  
 C.A.N. 3538

FEB 09 2006

AVG. MULL SPACING =  $W = \frac{W1 + W2}{2}$

TYPICAL ELEVATION

afc

**AL-FAROOQ CORPORATION**  
 ENGINEERS, PLANNERS & PRODUCT DESIGN  
 1235 SW 87 AVE  
 MIAMI, FLORIDA 33174  
 TEL. (305) 264-8100 FAX. (305) 262-6978

**PRO-TECH 7SG ALUM CURTAIN WALL SYSTEM (S.M.I.)**  
**CRAWFORD TRACEY CORPORATION**  
 3301 SW 13TH DRIVE  
 DEERFIELD BEACH, FL. 33442-8101  
 TEL. (954) 698-6888 FAX. (954) 698-6889

| no. | date     | by                     | description |
|-----|----------|------------------------|-------------|
| A   | 09.16.05 | REV. PER BCCO COMMENTS |             |
| B   | 02.08.06 | REV. PER BCCO COMMENTS |             |

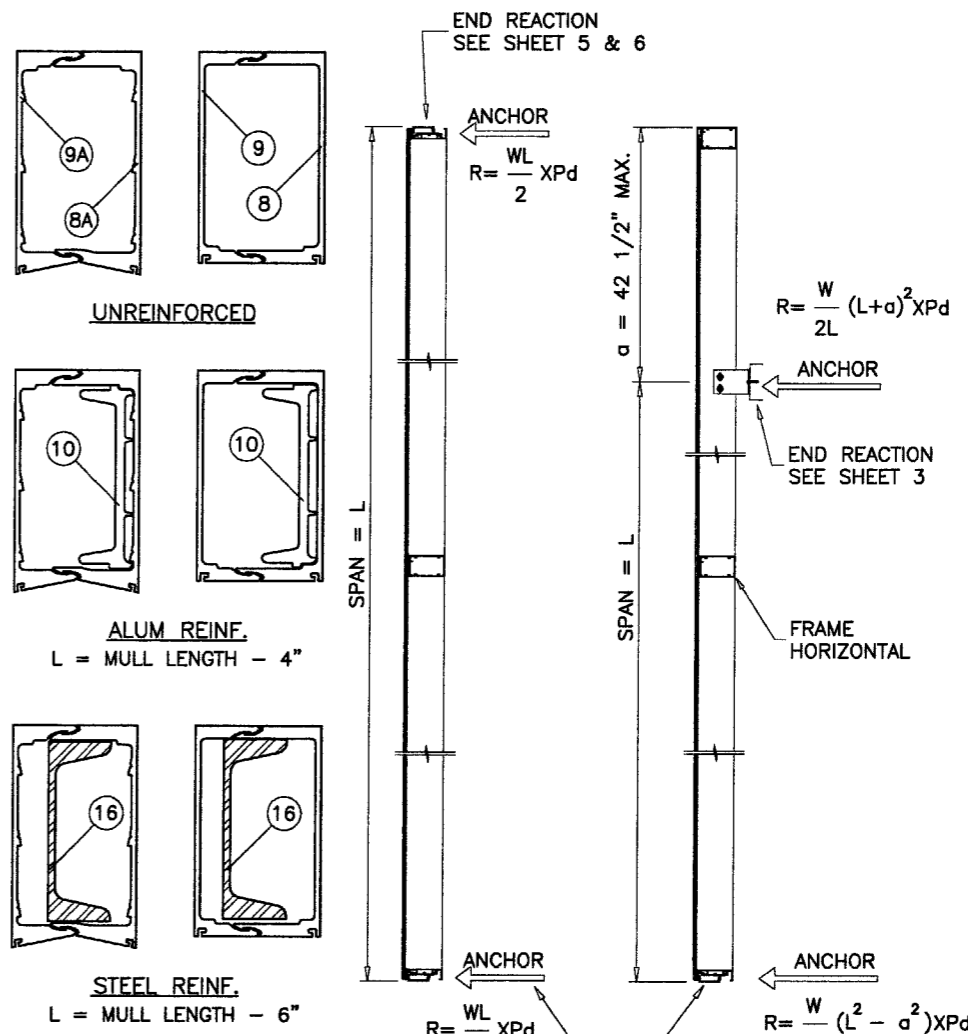
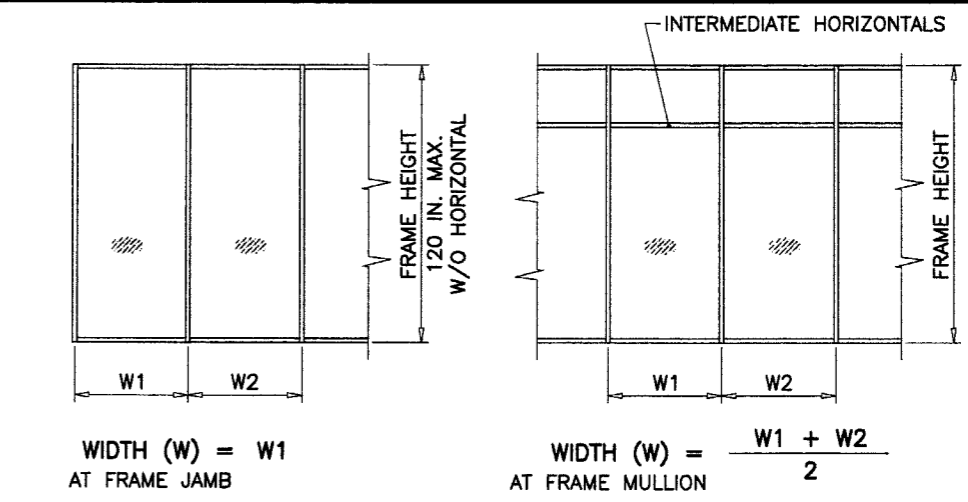
date: 12-29-04  
 scale: 3/8"=1'-0"  
 dr. by: HAMID  
 chk. by:

drawing no.  
**W04-104**

STORE W04-104CTC

| MULLION LOAD CAPACITY - PSF<br>SINGLE SPANS (WITH OR WITHOUT INTERMEDIATE HORIZONTALS) |              |                   |                   |                   |
|----------------------------------------------------------------------------------------|--------------|-------------------|-------------------|-------------------|
| NOMINAL DIMS.                                                                          |              | UNREINFORCED      | ALUM REINF.       | STEEL REINF.      |
| WIDTH (W)                                                                              | FRAME HEIGHT | EXT.(+) & INT.(-) | EXT.(+) & INT.(-) | EXT.(+) & INT.(-) |
| 36"                                                                                    | 120"         | 120.0             | 120.0             | 120.0             |
| 39"                                                                                    |              | 120.0             | 120.0             | 120.0             |
| 42"                                                                                    |              | 120.0             | 120.0             | 120.0             |
| 45"                                                                                    |              | 120.0             | 120.0             | 120.0             |
| 48"                                                                                    |              | 120.0             | 120.0             | 120.0             |
| 51"                                                                                    |              | 117.5             | 120.0             | 120.0             |
| 54"                                                                                    |              | 111.0             | 120.0             | 120.0             |
| 57"                                                                                    |              | 105.1             | 120.0             | 120.0             |
| 60"                                                                                    |              | 99.9              | 120.0             | 120.0             |
| 63"                                                                                    |              | -                 | 120.0             | 120.0             |
| 66"                                                                                    |              | -                 | 120.0             | 120.0             |
| 69"                                                                                    |              | -                 | 120.0             | 120.0             |
| 72"                                                                                    | -            | 120.0             | 120.0             |                   |
| 36"                                                                                    | 126"         | -                 | 120.0             | 120.0             |
| 39"                                                                                    |              | -                 | 120.0             | 120.0             |
| 42"                                                                                    |              | -                 | 120.0             | 120.0             |
| 45"                                                                                    |              | -                 | 120.0             | 120.0             |
| 48"                                                                                    |              | -                 | 120.0             | 120.0             |
| 51"                                                                                    |              | -                 | 120.0             | 120.0             |
| 54"                                                                                    |              | -                 | 120.0             | 120.0             |
| 57"                                                                                    |              | -                 | 120.0             | 120.0             |
| 60"                                                                                    |              | -                 | 120.0             | 120.0             |
| 63"                                                                                    |              | -                 | 120.0             | 120.0             |
| 66"                                                                                    |              | -                 | 120.0             | 120.0             |
| 69"                                                                                    |              | -                 | 120.0             | 120.0             |
| 72"                                                                                    | -            | 120.0             | 120.0             |                   |
| 36"                                                                                    | 132"         | -                 | 120.0             | 120.0             |
| 39"                                                                                    |              | -                 | 120.0             | 120.0             |
| 42"                                                                                    |              | -                 | 120.0             | 120.0             |
| 45"                                                                                    |              | -                 | 120.0             | 120.0             |
| 48"                                                                                    |              | -                 | 120.0             | 120.0             |
| 51"                                                                                    |              | -                 | 120.0             | 120.0             |
| 54"                                                                                    |              | -                 | 120.0             | 120.0             |
| 57"                                                                                    |              | -                 | 120.0             | 120.0             |
| 60"                                                                                    |              | -                 | 120.0             | 120.0             |
| 63"                                                                                    |              | -                 | 120.0             | 120.0             |
| 66"                                                                                    |              | -                 | 114.6             | 120.0             |
| 69"                                                                                    |              | -                 | 109.6             | 120.0             |
| 72"                                                                                    | -            | 105.0             | 120.0             |                   |
| 36"                                                                                    | 138"         | -                 | 120.0             | 120.0             |
| 39"                                                                                    |              | -                 | 120.0             | 120.0             |
| 42"                                                                                    |              | -                 | 120.0             | 120.0             |
| 45"                                                                                    |              | -                 | 120.0             | 120.0             |
| 48"                                                                                    |              | -                 | 120.0             | 120.0             |
| 51"                                                                                    |              | -                 | 120.0             | 120.0             |
| 54"                                                                                    |              | -                 | 120.0             | 120.0             |
| 57"                                                                                    |              | -                 | 116.1             | 120.0             |
| 60"                                                                                    |              | -                 | 110.3             | 120.0             |
| 63"                                                                                    |              | -                 | 105.1             | 120.0             |
| 66"                                                                                    |              | -                 | 100.3             | 120.0             |
| 69"                                                                                    |              | -                 | 95.9              | 120.0             |
| 72"                                                                                    | -            | 91.9              | 118.7             |                   |

| MULLION LOAD CAPACITY - PSF<br>SINGLE SPANS (WITH OR WITHOUT INTERMEDIATE HORIZONTALS) |              |                   |                   |                   |       |
|----------------------------------------------------------------------------------------|--------------|-------------------|-------------------|-------------------|-------|
| NOMINAL DIMS.                                                                          |              | UNREINFORCED      | ALUM REINF.       | STEEL REINF.      |       |
| WIDTH (W)                                                                              | FRAME HEIGHT | EXT.(+) & INT.(-) | EXT.(+) & INT.(-) | EXT.(+) & INT.(-) |       |
| 36"                                                                                    | 144"         | -                 | 120.0             | 120.0             |       |
| 39"                                                                                    |              | -                 | 120.0             | 120.0             |       |
| 42"                                                                                    |              | -                 | 120.0             | 120.0             |       |
| 45"                                                                                    |              | -                 | 120.0             | 120.0             |       |
| 48"                                                                                    |              | -                 | 120.0             | 120.0             |       |
| 51"                                                                                    |              | -                 | 114.2             | 120.0             |       |
| 54"                                                                                    |              | -                 | 107.9             | 120.0             |       |
| 57"                                                                                    |              | -                 | 102.2             | 120.0             |       |
| 60"                                                                                    |              | -                 | 97.1              | 120.0             |       |
| 63"                                                                                    |              | -                 | 92.5              | 120.0             |       |
| 66"                                                                                    |              | -                 | 88.3              | 118.9             |       |
| 69"                                                                                    |              | -                 | 84.4              | 113.7             |       |
| 36"                                                                                    | 150"         | -                 | 120.0             | 120.0             |       |
| 39"                                                                                    |              | -                 | 120.0             | 120.0             |       |
| 42"                                                                                    |              | -                 | 120.0             | 120.0             |       |
| 45"                                                                                    |              | -                 | 114.5             | 120.0             |       |
| 48"                                                                                    |              | -                 | 107.4             | 120.0             |       |
| 51"                                                                                    |              | -                 | 101.1             | 120.0             |       |
| 54"                                                                                    |              | -                 | 95.4              | 120.0             |       |
| 57"                                                                                    |              | -                 | 90.4              | 120.0             |       |
| 60"                                                                                    |              | -                 | 85.9              | 120.0             |       |
| 63"                                                                                    |              | -                 | 81.8              | 114.8             |       |
| 66"                                                                                    |              | -                 | 78.1              | 109.6             |       |
| 36"                                                                                    |              | 156"              | -                 | 120.0             | 120.0 |
| 39"                                                                                    | -            |                   | 117.5             | 120.0             |       |
| 42"                                                                                    | -            |                   | 109.1             | 120.0             |       |
| 45"                                                                                    | -            |                   | 101.8             | 120.0             |       |
| 48"                                                                                    | -            |                   | 95.5              | 120.0             |       |
| 51"                                                                                    | -            |                   | 89.8              | 120.0             |       |
| 54"                                                                                    | -            |                   | 84.8              | 120.0             |       |
| 57"                                                                                    | -            |                   | 80.4              | 117.3             |       |
| 60"                                                                                    | -            |                   | 76.4              | 111.5             |       |
| 63"                                                                                    | -            |                   | 72.7              | 106.1             |       |
| 36"                                                                                    | 162"         |                   | -                 | 113.6             | 120.0 |
| 39"                                                                                    |              |                   | -                 | 104.9             | 120.0 |
| 42"                                                                                    |              | -                 | 97.4              | 120.0             |       |
| 45"                                                                                    |              | -                 | 90.9              | 120.0             |       |
| 48"                                                                                    |              | -                 | 85.2              | 120.0             |       |
| 51"                                                                                    |              | -                 | 80.2              | 120.0             |       |
| 54"                                                                                    |              | -                 | 75.8              | 114.8             |       |
| 57"                                                                                    |              | -                 | 71.8              | 108.8             |       |
| 60"                                                                                    |              | -                 | 68.2              | 103.4             |       |
| 36"                                                                                    |              | 168"              | -                 | 101.9             | 120.0 |
| 39"                                                                                    |              |                   | -                 | 94.1              | 120.0 |
| 42"                                                                                    |              |                   | -                 | 87.3              | 120.0 |
| 45"                                                                                    | -            |                   | 81.5              | 120.0             |       |
| 48"                                                                                    | -            |                   | 76.4              | 120.0             |       |
| 51"                                                                                    | -            |                   | 71.9              | 113.1             |       |
| 54"                                                                                    | -            |                   | 67.9              | 106.8             |       |
| 57"                                                                                    | -            |                   | 64.4              | 101.2             |       |
| 60"                                                                                    | -            |                   | 61.1              | 96.1              |       |



Approved as complying with the  
Florida Building Code  
Date 11/24/02  
NOA# 05-030102  
Miami Dade Product Control  
Division  
By Slag 1. Chaudh

Engr: DR. HUMAYOUN FAROOQ  
STRUCTURES  
FLA. PE # 16557  
C.A.N. 3538

FEB 09 2006

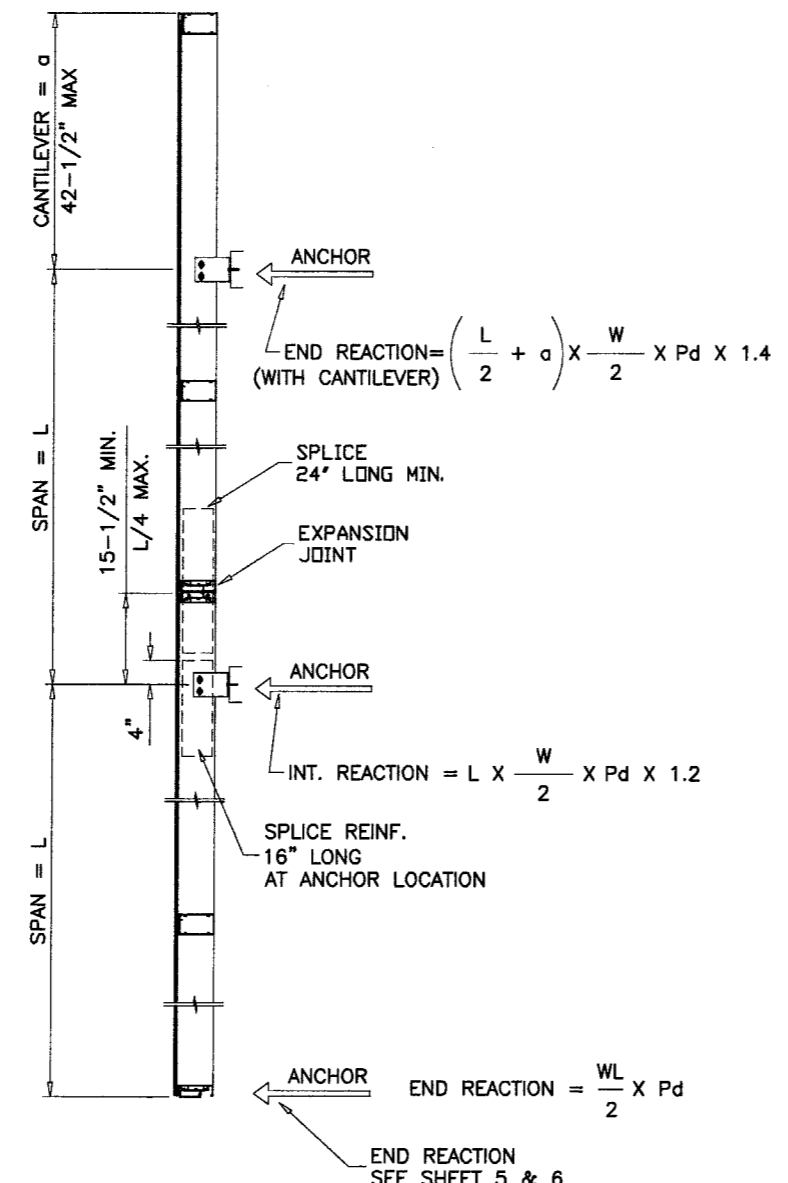
**AL-FAROOQ CORPORATION**  
ENGINEERS, PLANNERS & PRODUCT DESIGN  
1235 SW 87 AVE  
MIAMI, FLORIDA 33174  
TEL. (305) 264-8100 FAX. (305) 262-6978  
STORE/WO4-104CTC

**PRO-TECH 7SG ALUM CURTAIN WALL SYSTEM (S.M.I.)**  
**CRAWFORD TRACEY CORPORATION**  
3301 SW 13TH DRIVE  
DEERFIELD BEACH, FL. 33442-8101  
TEL. (954) 698-6888 FAX. (954) 698-6889

| no | date     | description            |
|----|----------|------------------------|
| A  | 09.16.05 | REV. PER BCCO COMMENTS |
| B  | 02.08.06 | REV. PER BCCO COMMENTS |

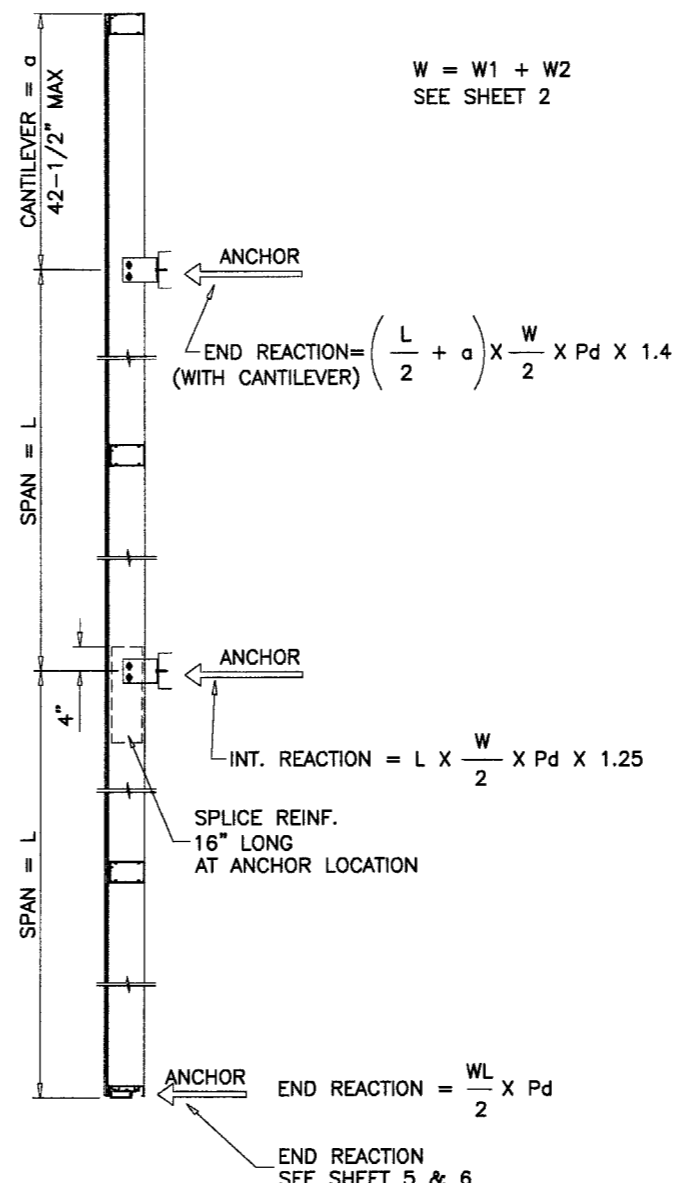
date: 12-29-04  
scale: 3/8"=1'-0"  
dr. by: HAMID  
chk. by:  
drawing no.  
**W04-104**  
sheet 2 of 13

| MULLION LOAD CAPACITY - PSF<br>MULTIPLE SPANS |          |                 |                 |
|-----------------------------------------------|----------|-----------------|-----------------|
| AVG. MULL SPACING                             | SPAN = L | UNREINFORCED    | ALUM REINF.     |
|                                               |          | EXT.(+)/INT.(-) | EXT.(+)/INT.(-) |
| 36"                                           | 120"     | 120.0           | 120.0           |
| 42"                                           |          | 120.0           | 120.0           |
| 48"                                           |          | 120.0           | 120.0           |
| 54"                                           |          | 120.0           | 120.0           |
| 60"                                           |          | 116.7           | 120.0           |
| 66"                                           |          | 106.1           | 120.0           |
| 72"                                           | 97.2     | 120.0           |                 |
| 36"                                           | 126"     | 120.0           | 120.0           |
| 42"                                           |          | 120.0           | 120.0           |
| 48"                                           |          | 120.0           | 120.0           |
| 54"                                           |          | 120.0           | 120.0           |
| 60"                                           |          | 110.1           | 120.0           |
| 66"                                           |          | 100.1           | 120.0           |
| 72"                                           | 91.7     | 114.7           |                 |
| 36"                                           | 132"     | 120.0           | 120.0           |
| 42"                                           |          | 120.0           | 120.0           |
| 48"                                           |          | 120.0           | 120.0           |
| 54"                                           |          | 116.0           | 120.0           |
| 60"                                           |          | 104.4           | 120.0           |
| 66"                                           |          | 94.9            | 118.7           |
| 72"                                           | 87.0     | 108.8           |                 |
| 36"                                           | 138"     | 120.0           | 120.0           |
| 42"                                           |          | 120.0           | 120.0           |
| 48"                                           |          | 120.0           | 120.0           |
| 54"                                           |          | 110.3           | 120.0           |
| 60"                                           |          | 99.3            | 120.0           |
| 66"                                           |          | 90.3            | 112.9           |
| 72"                                           | 82.8     | 103.5           |                 |
| 36"                                           | 144"     | 120.0           | 120.0           |
| 42"                                           |          | 120.0           | 120.0           |
| 48"                                           |          | 118.4           | 120.0           |
| 54"                                           |          | 105.2           | 120.0           |
| 60"                                           |          | 94.7            | 118.4           |
| 66"                                           |          | 86.1            | 107.6           |
| 36"                                           | 150"     | 120.0           | 120.0           |
| 42"                                           |          | 120.0           | 120.0           |
| 48"                                           |          | 113.2           | 120.0           |
| 54"                                           |          | 100.6           | 120.0           |
| 60"                                           |          | 90.5            | 113.2           |
| 66"                                           |          | 82.3            | 102.9           |
| 36"                                           | 156"     | 120.0           | 120.0           |
| 42"                                           |          | 120.0           | 120.0           |
| 48"                                           |          | 108.4           | 120.0           |
| 54"                                           |          | 96.3            | 120.0           |
| 60"                                           |          | 86.7            | 108.4           |
| 36"                                           |          | 162"            | 120.0           |
| 42"                                           | 118.9    |                 | 120.0           |
| 48"                                           | 104.0    |                 | 120.0           |
| 54"                                           | 92.5     |                 | 115.6           |
| 60"                                           | 83.2     |                 | 104.0           |
| 36"                                           | 168"     |                 | 120.0           |
| 42"                                           |          | 113.6           | 120.0           |
| 48"                                           |          | 99.4            | 120.0           |
| 54"                                           |          | 88.4            | 110.9           |
| 60"                                           |          | 79.5            | 99.8            |



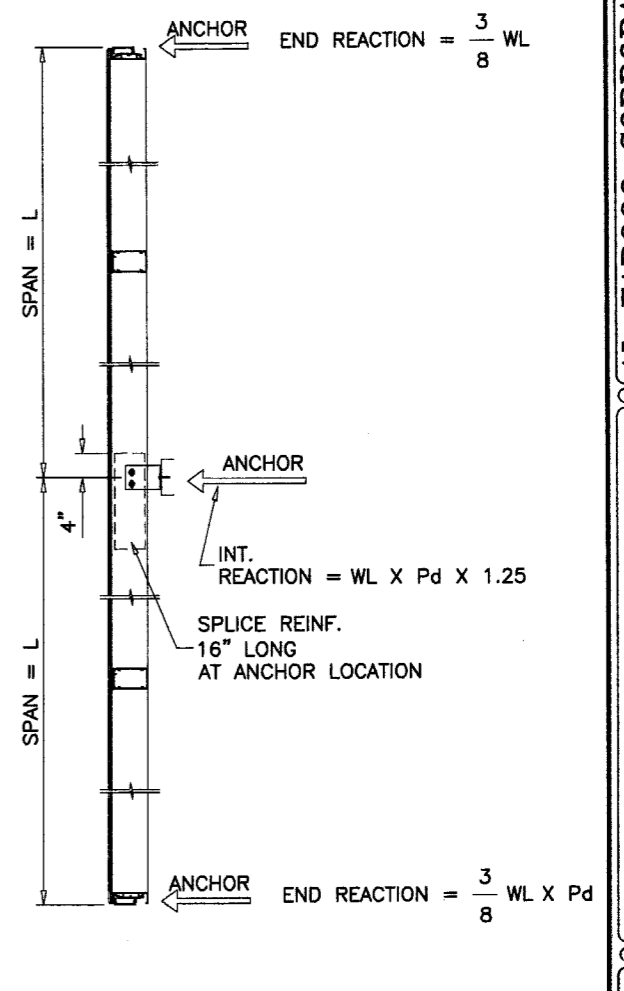
**MULTIPLE SPANS**

MULTIPLE SPANS WITH OR WITHOUT CANTILEVER  
USE TABLE ON THIS SHEET.



**TWO SPANS**

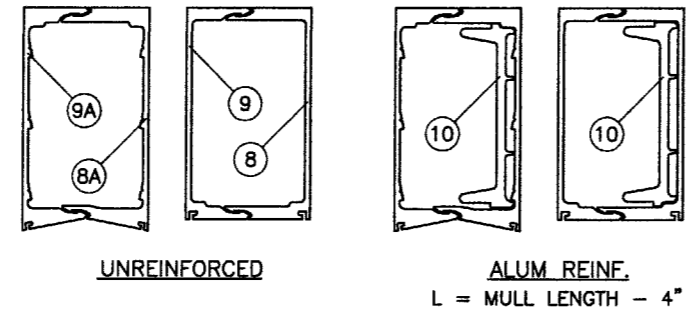
TWO SPANS WITH CANTILEVER  
AND WITHOUT SPLICE/EXPANSION JOINT  
USE TABLE ON THIS SHEET.



**TWO SPANS**

TWO SPANS WITHOUT CANTILEVER  
AND WITHOUT SPLICE/EXPANSION JOINT  
USE TABLE ON THIS SHEET.

UNEQUAL SPANS TO BE CHECKED ON JOB TO JOB BASIS  
END REACTIONS MAY CHANGE WITH LOCATION OF  
EXPANSION JOINT AND LENGTH OF CANTILEVER  
WORST CONDITION SHOWN.



Approved as complying with the  
Florida Building Code  
Date MARCH 02, 2006  
NOA# 05-030102  
Miami Dade Product Control  
Division  
By Ishag I. Chaudhry

Engr: DR. HUMAYOUN FAROOQ  
STRUCTURES  
FLA. PE # 16537  
C.A.N. 3538

FEB 09 2006

**afc**

**AL-FAROOQ CORPORATION**  
ENGINEERS, PLANNERS & PRODUCT DESIGN  
1235 SW 87 AVE  
MIAMI, FLORIDA 33174  
TEL. (305) 264-8100 FAX. (305) 262-6978  
STORE\W04-104CTC

---

**PRO-TECH 7SG ALUM CURTAIN WALL SYSTEM (S.M.I.)**  
**CRAWFORD TRACEY CORPORATION**  
3301 SW 13TH DRIVE  
DEERFIELD BEACH, FL. 33442-8101  
TEL. (954) 698-6888 FAX. (954) 698-6889

| NO. | DATE     | DESCRIPTION | REV. PER | COMMENTS      |
|-----|----------|-------------|----------|---------------|
| A   | 09.16.05 |             | REV. PER | BCCO COMMENTS |
| B   | 02.08.06 |             | REV. PER | BCCO COMMENTS |

revisions:

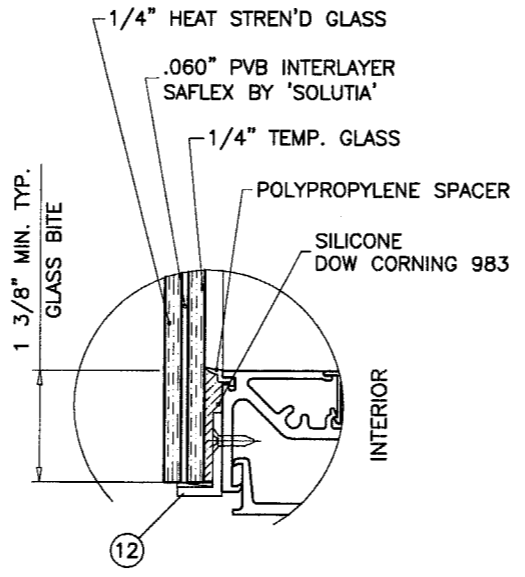
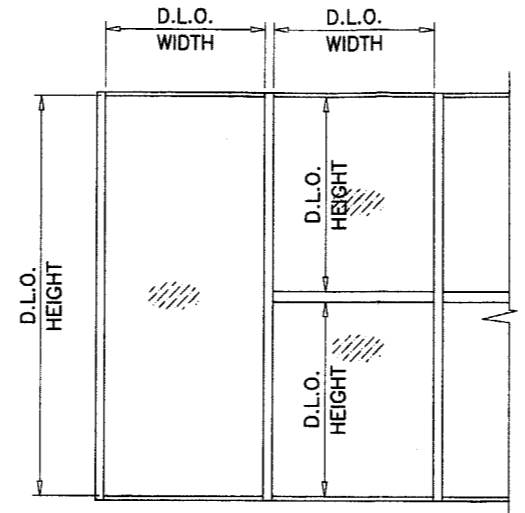
date: 12-29-04  
scale: 3/8"=1'-0"  
dr. by: HAMID  
chk. by:

drawing no.  
**W04-104**  
sheet 3 of 13

| GLASS LOAD CAPACITY - PSF<br>BASED ON<br>ASTM E1300-98 (60 SEC. WIND) |               |                      |
|-----------------------------------------------------------------------|---------------|----------------------|
| NOMINAL DIMS.                                                         | LOADS         |                      |
| D.L.O. WIDTH                                                          | D.L.O. HEIGHT | EXT. (+)<br>INT. (-) |
| 42"                                                                   | 54"           | 120.0                |
| 45"                                                                   |               | 120.0                |
| 48"                                                                   |               | 120.0                |
| 51"                                                                   |               | 120.0                |
| 54"                                                                   |               | 120.0                |
| 57"                                                                   |               | 120.0                |
| 60"                                                                   |               | 120.0                |
| 63"                                                                   |               | 120.0                |
| 66"                                                                   | 120.0         |                      |
| 69"                                                                   | 120.0         |                      |
| 72"                                                                   | 120.0         |                      |
| 75"                                                                   | 120.0         |                      |
| 78"                                                                   | 118.0         |                      |
| 42"                                                                   | 60"           | 120.0                |
| 45"                                                                   |               | 120.0                |
| 48"                                                                   |               | 120.0                |
| 51"                                                                   |               | 120.0                |
| 54"                                                                   |               | 120.0                |
| 57"                                                                   |               | 120.0                |
| 60"                                                                   |               | 120.0                |
| 63"                                                                   |               | 120.0                |
| 66"                                                                   | 120.0         |                      |
| 69"                                                                   | 119.1         |                      |
| 72"                                                                   | 114.6         |                      |
| 75"                                                                   | 110.4         |                      |
| 78"                                                                   | 106.3         |                      |
| 42"                                                                   | 66"           | 120.0                |
| 45"                                                                   |               | 120.0                |
| 48"                                                                   |               | 120.0                |
| 51"                                                                   |               | 120.0                |
| 54"                                                                   |               | 120.0                |
| 57"                                                                   |               | 120.0                |
| 60"                                                                   |               | 120.0                |
| 63"                                                                   |               | 117.6                |
| 66"                                                                   | 111.6         |                      |
| 69"                                                                   | 107.7         |                      |
| 72"                                                                   | 103.9         |                      |
| 75"                                                                   | 100.3         |                      |
| 78"                                                                   | 96.9          |                      |
| 42"                                                                   | 72"           | 120.0                |
| 45"                                                                   |               | 120.0                |
| 48"                                                                   |               | 120.0                |
| 51"                                                                   |               | 120.0                |
| 54"                                                                   |               | 120.0                |
| 57"                                                                   |               | 120.0                |
| 60"                                                                   |               | 114.6                |
| 63"                                                                   |               | 109.0                |
| 66"                                                                   | 103.9         |                      |
| 69"                                                                   | 99.1          |                      |
| 72"                                                                   | 94.5          |                      |
| 75"                                                                   | 91.6          |                      |
| 78"                                                                   | 88.8          |                      |

| GLASS LOAD CAPACITY - PSF<br>BASED ON<br>ASTM E1300-98 (60 SEC. WIND) |               |                      |
|-----------------------------------------------------------------------|---------------|----------------------|
| NOMINAL DIMS.                                                         | LOADS         |                      |
| D.L.O. WIDTH                                                          | D.L.O. HEIGHT | EXT. (+)<br>INT. (-) |
| 42"                                                                   | 78"           | 120.0                |
| 45"                                                                   |               | 120.0                |
| 48"                                                                   |               | 120.0                |
| 51"                                                                   |               | 120.0                |
| 54"                                                                   |               | 118.0                |
| 57"                                                                   |               | 111.9                |
| 60"                                                                   |               | 106.3                |
| 63"                                                                   |               | 101.4                |
| 66"                                                                   | 96.9          |                      |
| 69"                                                                   | 92.7          |                      |
| 72"                                                                   | 88.8          |                      |
| 75"                                                                   | 85.0          |                      |
| 78"                                                                   | 81.4          |                      |
| 42"                                                                   | 84"           | 120.0                |
| 45"                                                                   |               | 120.0                |
| 48"                                                                   |               | 120.0                |
| 51"                                                                   |               | 116.7                |
| 54"                                                                   |               | 109.8                |
| 57"                                                                   |               | 103.9                |
| 60"                                                                   |               | 98.8                 |
| 63"                                                                   |               | 94.5                 |
| 66"                                                                   | 90.6          |                      |
| 69"                                                                   | 86.8          |                      |
| 72"                                                                   | 83.4          |                      |
| 75"                                                                   | 80.1          |                      |
| 78"                                                                   | 77.1          |                      |
| 42"                                                                   | 90"           | 120.0                |
| 45"                                                                   |               | 120.0                |
| 48"                                                                   |               | 117.7                |
| 51"                                                                   |               | 109.2                |
| 54"                                                                   |               | 102.4                |
| 57"                                                                   |               | 96.9                 |
| 60"                                                                   |               | 92.1                 |
| 63"                                                                   |               | 88.2                 |
| 66"                                                                   | 84.6          |                      |
| 69"                                                                   | 81.4          |                      |
| 72"                                                                   | 78.4          |                      |
| 75"                                                                   | 75.0          |                      |
| 78"                                                                   | 71.6          |                      |
| 42"                                                                   | 96"           | 120.0                |
| 45"                                                                   |               | 111.0                |
| 48"                                                                   |               | 102.6                |
| 51"                                                                   |               | 95.8                 |
| 54"                                                                   |               | 90.4                 |
| 57"                                                                   |               | 86.1                 |
| 60"                                                                   |               | 82.3                 |
| 63"                                                                   |               | 79.0                 |
| 66"                                                                   | 75.7          |                      |

| GLASS LOAD CAPACITY - PSF<br>BASED ON<br>ASTM E1300-98 (60 SEC. WIND) |               |                      |
|-----------------------------------------------------------------------|---------------|----------------------|
| NOMINAL DIMS.                                                         | LOADS         |                      |
| D.L.O. WIDTH                                                          | D.L.O. HEIGHT | EXT. (+)<br>INT. (-) |
| 42"                                                                   | 102"          | 120.0                |
| 45"                                                                   |               | 116.4                |
| 48"                                                                   |               | 105.4                |
| 51"                                                                   |               | 96.9                 |
| 54"                                                                   |               | 90.3                 |
| 57"                                                                   |               | 84.9                 |
| 60"                                                                   |               | 80.7                 |
| 63"                                                                   |               | 77.1                 |
| 42"                                                                   | 108"          | 120.0                |
| 45"                                                                   |               | 111.7                |
| 48"                                                                   |               | 100.6                |
| 51"                                                                   |               | 92.1                 |
| 54"                                                                   |               | 85.3                 |
| 57"                                                                   |               | 80.1                 |
| 60"                                                                   |               | 75.7                 |
| 63"                                                                   |               | 71.3                 |
| 42"                                                                   | 114"          | 120.0                |
| 45"                                                                   |               | 107.8                |
| 48"                                                                   |               | 96.6                 |
| 51"                                                                   |               | 87.9                 |
| 54"                                                                   |               | 81.1                 |
| 57"                                                                   |               | 75.7                 |
| 60"                                                                   |               | 70.3                 |
| 63"                                                                   |               | 65.0                 |
| 42"                                                                   | 120"          | 120.0                |
| 45"                                                                   |               | 119.5                |
| 48"                                                                   |               | 104.7                |
| 51"                                                                   |               | 93.3                 |
| 54"                                                                   |               | 84.4                 |
| 57"                                                                   |               | 77.5                 |
| 60"                                                                   |               | 72.1                 |
| 63"                                                                   |               | 66.8                 |
| 42"                                                                   | 126"          | 117.0                |
| 45"                                                                   |               | 102.1                |
| 48"                                                                   |               | 90.4                 |
| 51"                                                                   |               | 81.4                 |
| 54"                                                                   |               | 74.9                 |
| 57"                                                                   |               | 69.9                 |
| 60"                                                                   |               | 65.2                 |
| 63"                                                                   |               | 60.6                 |
| 42"                                                                   | 132"          | 114.9                |
| 45"                                                                   |               | 99.9                 |
| 48"                                                                   |               | 88.2                 |
| 51"                                                                   |               | 79.9                 |
| 54"                                                                   |               | 74.9                 |
| 57"                                                                   |               | 70.2                 |
| 60"                                                                   |               | 65.6                 |
| 63"                                                                   |               | 61.0                 |
| 42"                                                                   | 138"          | 112.9                |
| 45"                                                                   |               | 98.1                 |
| 48"                                                                   |               | 86.4                 |
| 51"                                                                   |               | 78.1                 |
| 54"                                                                   |               | 73.1                 |
| 57"                                                                   |               | 68.4                 |
| 60"                                                                   |               | 63.8                 |
| 63"                                                                   |               | 59.4                 |
| 42"                                                                   | 144"          | 111.1                |
| 45"                                                                   |               | 96.6                 |
| 48"                                                                   |               | 84.9                 |
| 51"                                                                   |               | 76.6                 |
| 54"                                                                   |               | 71.6                 |
| 57"                                                                   |               | 67.0                 |
| 60"                                                                   |               | 62.4                 |
| 63"                                                                   |               | 57.9                 |
| 42"                                                                   | 150"          | 109.5                |
| 45"                                                                   |               | 95.0                 |
| 48"                                                                   |               | 83.3                 |
| 51"                                                                   |               | 75.0                 |
| 54"                                                                   |               | 70.0                 |
| 57"                                                                   |               | 65.4                 |
| 60"                                                                   |               | 60.8                 |
| 63"                                                                   |               | 56.3                 |
| 42"                                                                   | 156-1/2"      | 107.0                |
| 45"                                                                   |               | 92.1                 |
| 48"                                                                   |               | 80.4                 |
| 51"                                                                   |               | 72.1                 |
| 54"                                                                   |               | 67.1                 |
| 57"                                                                   |               | 62.4                 |
| 60"                                                                   |               | 57.8                 |
| 63"                                                                   |               | 53.2                 |
| 42"                                                                   | 162"          | 104.5                |
| 45"                                                                   |               | 89.6                 |
| 48"                                                                   |               | 77.9                 |
| 51"                                                                   |               | 69.6                 |
| 54"                                                                   |               | 64.6                 |
| 57"                                                                   |               | 60.0                 |
| 60"                                                                   |               | 55.4                 |
| 63"                                                                   |               | 50.8                 |
| 42"                                                                   | 168"          | 102.0                |
| 45"                                                                   |               | 87.1                 |
| 48"                                                                   |               | 75.4                 |
| 51"                                                                   |               | 67.1                 |
| 54"                                                                   |               | 62.1                 |
| 57"                                                                   |               | 57.4                 |
| 60"                                                                   |               | 52.8                 |
| 63"                                                                   |               | 48.2                 |
| 42"                                                                   | 174"          | 99.5                 |
| 45"                                                                   |               | 84.6                 |
| 48"                                                                   |               | 72.9                 |
| 51"                                                                   |               | 64.6                 |
| 54"                                                                   |               | 59.6                 |
| 57"                                                                   |               | 55.0                 |
| 60"                                                                   |               | 50.4                 |
| 63"                                                                   |               | 45.8                 |
| 42"                                                                   | 180"          | 97.0                 |
| 45"                                                                   |               | 82.1                 |
| 48"                                                                   |               | 70.4                 |
| 51"                                                                   |               | 62.1                 |
| 54"                                                                   |               | 57.1                 |
| 57"                                                                   |               | 52.4                 |
| 60"                                                                   |               | 47.8                 |
| 63"                                                                   |               | 43.2                 |
| 42"                                                                   | 186"          | 94.5                 |
| 45"                                                                   |               | 79.6                 |
| 48"                                                                   |               | 67.9                 |
| 51"                                                                   |               | 59.6                 |
| 54"                                                                   |               | 54.6                 |
| 57"                                                                   |               | 50.0                 |
| 60"                                                                   |               | 45.4                 |
| 63"                                                                   |               | 40.8                 |
| 42"                                                                   | 192"          | 92.0                 |
| 45"                                                                   |               | 77.1                 |
| 48"                                                                   |               | 65.4                 |
| 51"                                                                   |               | 57.1                 |
| 54"                                                                   |               | 52.1                 |
| 57"                                                                   |               | 47.4                 |
| 60"                                                                   |               | 42.8                 |
| 63"                                                                   |               | 38.2                 |
| 42"                                                                   | 198"          | 89.5                 |
| 45"                                                                   |               | 74.6                 |
| 48"                                                                   |               | 62.9                 |
| 51"                                                                   |               | 54.6                 |
| 54"                                                                   |               | 49.6                 |
| 57"                                                                   |               | 45.0                 |
| 60"                                                                   |               | 40.4                 |
| 63"                                                                   |               | 35.8                 |
| 42"                                                                   | 204"          | 87.0                 |
| 45"                                                                   |               | 72.1                 |
| 48"                                                                   |               | 60.4                 |
| 51"                                                                   |               | 52.1                 |
| 54"                                                                   |               | 47.1                 |
| 57"                                                                   |               | 42.4                 |
| 60"                                                                   |               | 37.8                 |
| 63"                                                                   |               | 33.2                 |
| 42"                                                                   | 210"          | 84.5                 |
| 45"                                                                   |               | 69.6                 |
| 48"                                                                   |               | 57.9                 |
| 51"                                                                   |               | 49.6                 |
| 54"                                                                   |               | 44.6                 |
| 57"                                                                   |               | 40.0                 |
| 60"                                                                   |               | 35.4                 |
| 63"                                                                   |               | 30.8                 |
| 42"                                                                   | 216"          | 82.0                 |
| 45"                                                                   |               | 67.1                 |
| 48"                                                                   |               | 55.4                 |
| 51"                                                                   |               | 47.1                 |
| 54"                                                                   |               | 42.1                 |
| 57"                                                                   |               | 37.4                 |
| 60"                                                                   |               | 32.8                 |
| 63"                                                                   |               | 28.2                 |
| 42"                                                                   | 222"          | 79.5                 |
| 45"                                                                   |               | 64.6                 |
| 48"                                                                   |               | 52.9                 |
| 51"                                                                   |               | 44.6                 |
| 54"                                                                   |               | 39.6                 |
| 57"                                                                   |               | 35.0                 |
| 60"                                                                   |               | 30.4                 |
| 63"                                                                   |               | 25.8                 |
| 42"                                                                   | 228"          | 77.0                 |
| 45"                                                                   |               | 62.1                 |
| 48"                                                                   |               | 50.4                 |
| 51"                                                                   |               | 42.1                 |
| 54"                                                                   |               | 37.1                 |
| 57"                                                                   |               | 32.4                 |
| 60"                                                                   |               | 27.8                 |
| 63"                                                                   |               | 23.2                 |
| 42"                                                                   | 234"          | 74.5                 |
| 45"                                                                   |               | 59.6                 |
| 48"                                                                   |               | 47.9                 |
| 51"                                                                   |               | 39.6                 |
| 54"                                                                   |               | 34.6                 |
| 57"                                                                   |               | 30.0                 |
| 60"                                                                   |               | 25.4                 |
| 63"                                                                   |               | 20.8                 |
| 42"                                                                   | 240"          | 72.0                 |
| 45"                                                                   |               | 57.1                 |
| 48"                                                                   |               | 45.4                 |
| 51"                                                                   |               | 37.1                 |
| 54"                                                                   |               | 32.1                 |
| 57"                                                                   |               | 27.4                 |
| 60"                                                                   |               | 22.8                 |
| 63"                                                                   |               | 18.2                 |
| 42"                                                                   | 246"          | 69.5                 |
| 45"                                                                   |               | 54.6                 |
| 48"                                                                   |               | 42.9                 |
| 51"                                                                   |               | 34.6                 |
| 54"                                                                   |               | 29.6                 |
| 57"                                                                   |               | 25.0                 |
| 60"                                                                   |               | 20.4                 |
| 63"                                                                   |               | 15.8                 |
| 42"                                                                   | 252"          | 67.0                 |
| 45"                                                                   |               | 52.1                 |
| 48"                                                                   |               | 40.4                 |
| 51"                                                                   |               | 32.1                 |
| 54"                                                                   |               | 27.1                 |
| 57"                                                                   |               | 22.4                 |
| 60"                                                                   |               | 17.8                 |
| 63"                                                                   |               | 13.2                 |
| 42"                                                                   | 258"          | 64.5                 |
| 45"                                                                   |               | 49.6                 |
| 48"                                                                   |               | 37.9                 |
| 51"                                                                   |               | 29.6                 |
| 54"                                                                   |               | 24.6                 |
| 57"                                                                   |               | 20.0                 |
| 60"                                                                   |               | 15.4                 |
| 63"                                                                   |               | 10.8                 |
| 42"                                                                   | 264"          | 62.0                 |
| 45"                                                                   |               | 47.1                 |
| 48"                                                                   |               | 35.4                 |
| 51"                                                                   |               | 27.1                 |
| 54"                                                                   |               | 22.1                 |
| 57"                                                                   |               | 17.4                 |
| 60"                                                                   |               | 12.8                 |
| 63"                                                                   |               | 8.2                  |
| 42"                                                                   | 270"          | 59.5                 |
| 45"                                                                   |               | 44.6                 |
| 48"                                                                   |               | 32.9                 |
| 51"                                                                   |               | 24.6                 |
| 54"                                                                   |               | 19.6                 |
| 57"                                                                   |               | 15.0                 |
| 60"                                                                   |               | 10.4                 |
| 63"                                                                   |               | 5.8                  |
| 42"                                                                   | 276"          | 57.0                 |
| 45"                                                                   |               | 42.1                 |
| 48"                                                                   |               | 30.4                 |
| 51"                                                                   |               | 22.1                 |
| 54"                                                                   |               | 17.1                 |
| 57"                                                                   |               | 12.4                 |
| 60"                                                                   |               | 7.8                  |
| 63"                                                                   |               | 3.2                  |
| 42"                                                                   | 282"          | 54.5                 |
| 45"                                                                   |               | 39.6                 |
| 48"                                                                   |               | 27.9                 |
| 51"                                                                   |               | 19.6                 |
| 54"                                                                   |               | 14.6                 |
| 57"                                                                   |               | 10.0                 |
| 60"                                                                   |               | 5.4                  |
| 63"                                                                   |               | 0.8                  |
| 42"                                                                   | 288"          | 52.0                 |
| 45"                                                                   |               | 37.1                 |
| 48"                                                                   |               | 25.4                 |
| 51"                                                                   |               | 17.1                 |
| 54"                                                                   |               | 12.1                 |
| 57"                                                                   |               | 7.4                  |
| 60"                                                                   |               | 2.8                  |
| 63"                                                                   |               | -1.8                 |
| 42"                                                                   | 294"          | 49.5                 |
| 45"                                                                   |               | 34.6                 |
| 48"                                                                   |               | 22.9                 |
| 51"                                                                   |               | 14.6                 |
| 54"                                                                   |               | 9.6                  |
| 57"                                                                   |               | 5.0                  |
| 60"                                                                   |               | 0.4                  |
| 63"                                                                   |               | -4.2                 |
| 42"                                                                   | 300"          | 47.0                 |
| 45"                                                                   |               | 32.1                 |
| 48"                                                                   |               | 20.4                 |
| 51"                                                                   |               | 12.1                 |
| 54"                                                                   |               | 7.1                  |
| 57"                                                                   |               | 2.4                  |
| 60"                                                                   |               | -2.2                 |
| 63"                                                                   |               | -6.8                 |



GLAZING DETAIL

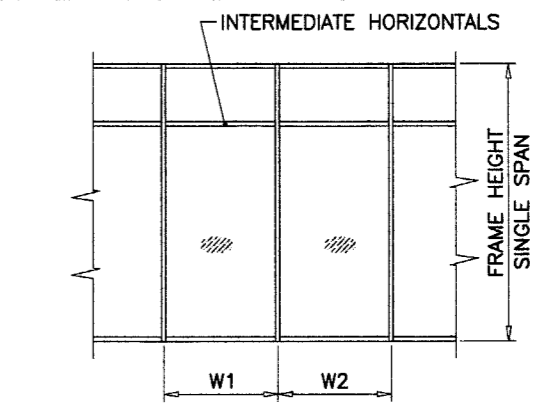
Approved as complying with the Florida Building Code  
 Date: MAR 20 2006  
 NOA#: 05-0301-02  
 Miami Dade Product Control Division  
 By: Shag I. Chaudhry

NOTE:  
 OPTION OF .019" CERAMIC FRIT ON ROOM SIDE SURFACE OF INNER PANE GLASS.  
 MAX. GLASS AREA LIMITED TO 22.2 SQ. FT. WITH ASPECT RATIO EQUAL OR LESS THAN 5.

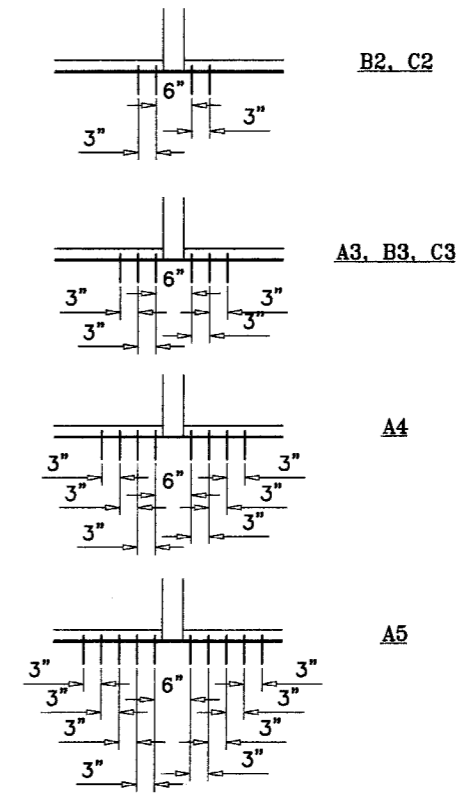
| GLASS LOAD CAPACITY - PSF<br>BASED ON<br>ASTM E1300-02 (3 SEC. GUSTS) |               |                      |
|-----------------------------------------------------------------------|---------------|----------------------|
| NOMINAL DIMS.                                                         | LOADS         |                      |
| D.L.O. WIDTH                                                          | D.L.O. HEIGHT | EXT. (+)<br>INT. (-) |
| 42"                                                                   | 54"           | 120.0                |
| 45"                                                                   |               | 120.0                |
| 48"                                                                   |               | 120.0                |
| 51"                                                                   |               | 120.0                |
| 54"                                                                   |               | 120.0                |
| 57"                                                                   |               | 120.0                |
| 60"                                                                   |               | 120.0                |
| 63"                                                                   |               | 120.0                |
| 42"                                                                   | 60"           | 120.0                |
| 45"                                                                   |               | 120.0                |
| 48"                                                                   |               | 120.0                |
| 51"                                                                   |               | 120.0                |
| 54"                                                                   |               | 120.0                |
| 57"                                                                   |               | 120.0                |
| 60"                                                                   |               | 120.0                |
| 63"                                                                   |               | 120.0                |
| 42"                                                                   | 66"           | 120.0                |
| 45"                                                                   |               | 120.0                |
| 48"                                                                   |               | 120.0                |
| 51"                                                                   |               | 120.0                |
| 54"                                                                   |               | 120.0                |
| 57"                                                                   |               | 120.0                |
| 60"                                                                   |               | 120.0                |
| 63"                                                                   |               | 120.0                |
| 42"                                                                   | 72"           | 120.0                |
| 45"                                                                   |               | 120.0                |
| 48"                                                                   |               | 120.0                |
| 51"                                                                   |               | 120.0                |
| 54"                                                                   |               | 120.0                |
| 57"                                                                   |               | 120.0                |
| 60"                                                                   |               | 120.0                |
| 63"                                                                   |               | 120.0                |
| 42"                                                                   | 78"           | 120.0                |
| 45"                                                                   |               | 120.0                |
| 48"                                                                   |               | 120.0                |
| 51"                                                                   |               | 120.0                |
| 54"                                                                   |               | 120.0                |
| 57"                                                                   |               | 120.0                |
| 60"                                                                   |               | 120.0                |
| 63"                                                                   |               | 120.0                |
| 42"                                                                   | 84"           | 120.0                |
| 45"                                                                   |               | 120.0                |
| 48"                                                                   |               | 120.0                |
| 51"                                                                   |               | 120.0                |
| 54"                                                                   |               | 120.0                |
| 57"                                                                   |               | 120.0                |
| 60"                                                                   |               | 120.0                |
| 63"                                                                   |               | 120.0                |
| 42"                                                                   | 90"           | 120.0                |
| 45"                                                                   |               | 120.0                |
| 48"                                                                   |               | 120.0                |
| 51"                                                                   |               | 120.0                |
| 54"                                                                   |               | 120.0                |
| 57"                                                                   |               | 120.0                |
| 60"                                                                   |               | 120.0                |
| 63"                                                                   |               | 120.0                |
| 42"                                                                   | 96"           | 120.0                |
| 45"                                                                   |               | 120.0                |
| 48"                                                                   |               | 120.0                |
| 51"                                                                   |               | 120.0                |
| 54"                                                                   |               | 120.0                |
| 57"                                                                   |               | 120.0                |
| 60"                                                                   |               | 120.0                |
| 63"                                                                   |               | 120.0                |
| 42"                                                                   | 102"          | 120.0                |
| 45"                                                                   |               | 120.0                |
| 48"                                                                   |               | 120.0                |
| 51"                                                                   |               | 120.0                |
| 54"                                                                   |               | 120.0                |
| 57"                                                                   |               | 120.0                |
| 60"                                                                   |               | 120.0                |
| 63"                                                                   |               | 120.0                |
| 42"                                                                   | 108"          | 120.0                |
| 45"                                                                   |               | 120.0                |
| 48"                                                                   |               | 120.0                |
| 51"                                                                   |               | 120.0                |
| 54"                                                                   |               | 120.0                |
| 57"                                                                   |               | 120.0                |
| 60"                                                                   |               | 120.0                |
| 63"                                                                   |               | 120.0                |
| 42"                                                                   | 114"          | 120.0                |
| 45"                                                                   |               | 120.0                |
| 48"                                                                   |               | 120.0                |
| 51"                                                                   |               | 120.0                |
| 54"                                                                   |               | 120.0                |
| 57"                                                                   |               | 120.0                |
| 60"                                                                   |               | 120.0                |
| 63"                                                                   |               | 120.0                |
| 42"                                                                   | 120"          | 120.0                |
| 45"                                                                   |               | 120.0                |
| 48"                                                                   |               | 120.0                |
| 51"                                                                   |               | 120.0                |
| 54"                                                                   |               | 120.0                |
| 57"                                                                   |               | 120.0                |
| 60"                                                                   |               | 120.0                |
| 63"                                                                   |               | 120.0                |
| 42"                                                                   | 126"          | 120.0                |
| 45"                                                                   |               | 120.0                |
| 48"                                                                   |               | 120.0                |
| 51"                                                                   |               | 120.0                |
| 54"                                                                   |               | 120.0                |
| 57"                                                                   |               | 120.0                |
| 60"                                                                   |               | 120.0                |
| 63"                                                                   |               | 120.0                |
| 42"                                                                   | 132"          | 120.0                |
| 45"                                                                   |               | 120.0                |
| 48"                                                                   |               | 120.0                |
| 51"                                                                   |               | 120.0                |
| 54"                                                                   |               | 120.0                |
| 57"                                                                   |               | 120.0                |
| 60"                                                                   |               | 120.0                |
| 63"                                                                   |               | 120.0                |
| 42"                                                                   | 138"          | 120.0                |
| 45"                                                                   |               | 120.0                |
| 48"                                                                   |               | 120.0                |
| 51"                                                                   |               | 120.0                |
| 54"                                                                   |               | 120.0                |
| 57"                                                                   |               | 120.0                |
| 60"                                                                   |               | 120.0                |
| 63"                                                                   |               |                      |

| ANCHOR LOAD CAPACITY - PSF<br>EXT.(+) & INT.(-) |              |                  |       |       |                  |       |                  |       |
|-------------------------------------------------|--------------|------------------|-------|-------|------------------|-------|------------------|-------|
| NOMINAL DIMS.                                   |              | ANCHORS TYPE 'A' |       |       | ANCHORS TYPE 'B' |       | ANCHORS TYPE 'C' |       |
| WIDTH (W)                                       | FRAME HEIGHT | A3               | A4    | A5    | B2               | B3    | C2               | C3    |
| 36"                                             | 120"         | 120.0            | 120.0 | 120.0 | 120.0            | 120.0 | 120.0            | 120.0 |
| 39"                                             |              | 120.0            | 120.0 | 120.0 | 120.0            | 120.0 | 120.0            | 120.0 |
| 42"                                             |              | 120.0            | 120.0 | 120.0 | 120.0            | 120.0 | 112.9            | 120.0 |
| 45"                                             |              | 116.5            | 120.0 | 120.0 | 120.0            | 120.0 | 105.3            | 120.0 |
| 48"                                             |              | 109.2            | 120.0 | 120.0 | 120.0            | 120.0 | 105.3            | 120.0 |
| 51"                                             |              | 102.8            | 120.0 | 120.0 | 120.0            | 120.0 | 102.2            | 120.0 |
| 54"                                             |              | 102.8            | 120.0 | 120.0 | 113.7            | 120.0 | 96.6             | 120.0 |
| 57"                                             |              | 98.5             | 118.2 | 120.0 | 107.7            | 120.0 | 91.5             | 120.0 |
| 60"                                             |              | 93.6             | 118.2 | 120.0 | 107.7            | 120.0 | 91.5             | 118.5 |
| 63"                                             |              | 89.1             | 112.9 | 120.0 | 106.3            | 120.0 | 90.3             | 112.9 |
| 66"                                             |              | 89.1             | 107.8 | 120.0 | 101.5            | 120.0 | 86.2             | 112.9 |
| 69"                                             |              | 86.8             | 103.1 | 120.0 | 101.5            | 120.0 | 86.2             | 109.9 |
| 72"                                             | 83.2         | 103.1            | 119.6 | 100.8 | 120.0            | 85.6  | 105.3            |       |
| 36"                                             | 126"         | 120.0            | 120.0 | 120.0 | 120.0            | 120.0 | 120.0            | 120.0 |
| 39"                                             |              | 118.9            | 120.0 | 120.0 | 120.0            | 120.0 | 115.8            | 120.0 |
| 42"                                             |              | 118.9            | 120.0 | 120.0 | 120.0            | 120.0 | 107.5            | 120.0 |
| 45"                                             |              | 110.9            | 120.0 | 120.0 | 118.1            | 120.0 | 100.3            | 120.0 |
| 48"                                             |              | 104.0            | 120.0 | 120.0 | 118.1            | 120.0 | 100.3            | 120.0 |
| 51"                                             |              | 97.9             | 120.0 | 120.0 | 114.6            | 120.0 | 97.4             | 120.0 |
| 54"                                             |              | 97.9             | 118.9 | 120.0 | 108.3            | 120.0 | 92.0             | 120.0 |
| 57"                                             |              | 93.8             | 112.6 | 120.0 | 102.6            | 120.0 | 87.1             | 118.8 |
| 60"                                             |              | 89.1             | 112.6 | 120.0 | 102.6            | 120.0 | 87.1             | 112.9 |
| 63"                                             |              | 84.9             | 107.5 | 120.0 | 101.2            | 120.0 | 86.0             | 107.5 |
| 66"                                             |              | 84.9             | 102.6 | 120.0 | 96.6             | 120.0 | 82.1             | 107.5 |
| 69"                                             |              | 82.7             | 98.2  | 118.9 | 96.6             | 120.0 | 82.1             | 104.7 |
| 72"                                             | 79.2         | 98.2             | 113.9 | 96.0  | 118.1            | 81.5  | 100.3            |       |
| 36"                                             | 132"         | 120.0            | 120.0 | 120.0 | 120.0            | 120.0 | 119.7            | 120.0 |
| 39"                                             |              | 113.5            | 120.0 | 120.0 | 120.0            | 120.0 | 110.5            | 120.0 |
| 42"                                             |              | 113.5            | 120.0 | 120.0 | 120.0            | 120.0 | 102.6            | 120.0 |
| 45"                                             |              | 105.9            | 120.0 | 120.0 | 112.7            | 120.0 | 95.8             | 120.0 |
| 48"                                             |              | 99.3             | 120.0 | 120.0 | 112.7            | 120.0 | 95.8             | 120.0 |
| 51"                                             |              | 93.4             | 120.0 | 120.0 | 109.4            | 120.0 | 92.9             | 118.3 |
| 54"                                             |              | 93.4             | 113.5 | 120.0 | 103.3            | 120.0 | 87.8             | 118.3 |
| 57"                                             |              | 89.6             | 107.5 | 120.0 | 97.9             | 120.0 | 83.2             | 113.4 |
| 60"                                             |              | 85.1             | 107.5 | 120.0 | 97.9             | 120.0 | 83.2             | 107.7 |
| 63"                                             |              | 81.0             | 102.6 | 118.9 | 96.6             | 120.0 | 82.1             | 102.6 |
| 66"                                             |              | 81.0             | 98.0  | 118.6 | 92.2             | 120.0 | 78.3             | 102.6 |
| 69"                                             |              | 78.9             | 93.7  | 113.5 | 92.2             | 117.6 | 78.3             | 99.9  |
| 72"                                             | 75.6         | 93.7             | 108.7 | 91.6  | 112.7            | 77.8  | 95.8             |       |
| 36"                                             | 138"         | 117.6            | 120.0 | 120.0 | 120.0            | 120.0 | 114.5            | 120.0 |
| 39"                                             |              | 108.5            | 120.0 | 120.0 | 120.0            | 120.0 | 105.7            | 120.0 |
| 42"                                             |              | 108.5            | 120.0 | 120.0 | 115.5            | 120.0 | 98.1             | 120.0 |
| 45"                                             |              | 101.3            | 120.0 | 120.0 | 107.8            | 120.0 | 91.6             | 120.0 |
| 48"                                             |              | 95.0             | 120.0 | 120.0 | 107.8            | 120.0 | 91.6             | 120.0 |
| 51"                                             |              | 89.4             | 114.9 | 120.0 | 104.7            | 120.0 | 88.9             | 113.1 |
| 54"                                             |              | 89.4             | 108.5 | 120.0 | 98.8             | 120.0 | 84.0             | 113.1 |
| 57"                                             |              | 85.7             | 102.8 | 120.0 | 93.6             | 120.0 | 79.5             | 108.5 |
| 60"                                             |              | 81.4             | 102.8 | 119.4 | 93.6             | 120.0 | 79.5             | 103.0 |
| 63"                                             |              | 77.5             | 98.2  | 113.7 | 92.4             | 115.5 | 78.5             | 98.1  |
| 66"                                             |              | 77.5             | 93.7  | 113.5 | 88.2             | 115.5 | 74.9             | 98.1  |
| 69"                                             |              | 75.5             | 89.6  | 108.5 | 88.2             | 112.5 | 74.9             | 95.6  |
| 72"                                             | 72.3         | 89.6             | 104.0 | 87.6  | 107.8            | 74.4  | 91.6             |       |

| ANCHOR LOAD CAPACITY - PSF<br>EXT.(+) & INT.(-) |              |                  |       |       |                  |       |                  |       |       |
|-------------------------------------------------|--------------|------------------|-------|-------|------------------|-------|------------------|-------|-------|
| NOMINAL DIMS.                                   |              | ANCHORS TYPE 'A' |       |       | ANCHORS TYPE 'B' |       | ANCHORS TYPE 'C' |       |       |
| WIDTH (W)                                       | FRAME HEIGHT | A3               | A4    | A5    | B2               | B3    | C2               | C3    |       |
| 36"                                             | 144"         | 112.7            | 120.0 | 120.0 | 120.0            | 120.0 | 109.7            | 120.0 |       |
| 39"                                             |              | 104.0            | 120.0 | 120.0 | 119.2            | 120.0 | 101.3            | 120.0 |       |
| 42"                                             |              | 104.0            | 120.0 | 120.0 | 110.7            | 120.0 | 94.0             | 120.0 |       |
| 45"                                             |              | 97.1             | 117.9 | 120.0 | 103.3            | 120.0 | 87.8             | 120.0 |       |
| 48"                                             |              | 91.0             | 117.0 | 120.0 | 103.3            | 120.0 | 87.8             | 115.2 |       |
| 51"                                             |              | 85.6             | 110.1 | 120.0 | 100.3            | 120.0 | 85.2             | 108.4 |       |
| 54"                                             |              | 85.6             | 104.0 | 120.0 | 94.7             | 120.0 | 80.5             | 108.4 |       |
| 57"                                             |              | 82.1             | 98.5  | 120.0 | 89.7             | 120.0 | 76.2             | 103.9 |       |
| 60"                                             |              | 78.0             | 98.5  | 114.4 | 89.7             | 116.3 | 76.2             | 98.8  |       |
| 63"                                             |              | 74.3             | 94.1  | 109.0 | 88.6             | 110.7 | 75.2             | 94.0  |       |
| 66"                                             |              | 74.3             | 89.8  | 108.7 | 84.5             | 110.7 | 71.8             | 94.0  |       |
| 69"                                             |              | 72.3             | 85.9  | 104.0 | 84.5             | 107.8 | 71.8             | 91.6  |       |
| 36"                                             | 150"         | 108.2            | 120.0 | 120.0 | 120.0            | 120.0 | 105.3            | 120.0 |       |
| 39"                                             |              | 99.8             | 120.0 | 120.0 | 114.5            | 120.0 | 97.2             | 120.0 |       |
| 42"                                             |              | 99.8             | 120.0 | 120.0 | 106.3            | 120.0 | 90.3             | 120.0 |       |
| 45"                                             |              | 93.2             | 113.2 | 120.0 | 99.2             | 120.0 | 84.3             | 118.0 |       |
| 48"                                             |              | 87.4             | 112.3 | 120.0 | 99.2             | 120.0 | 84.3             | 110.6 |       |
| 51"                                             |              | 82.2             | 105.7 | 120.0 | 96.3             | 120.0 | 81.8             | 104.1 |       |
| 54"                                             |              | 82.2             | 99.8  | 120.0 | 90.9             | 120.0 | 77.2             | 104.1 |       |
| 57"                                             |              | 78.8             | 94.6  | 115.6 | 86.1             | 117.5 | 73.2             | 99.8  |       |
| 60"                                             |              | 74.9             | 94.6  | 109.8 | 86.1             | 111.6 | 73.2             | 94.8  |       |
| 63"                                             |              | 71.3             | 90.3  | 104.6 | 85.0             | 106.3 | 72.2             | 90.3  |       |
| 66"                                             |              | 71.3             | 86.2  | 104.4 | 81.2             | 106.3 | 68.9             | 90.3  |       |
| 36"                                             |              | 156"             | 104.0 | 120.0 | 120.0            | 119.2 | 120.0            | 101.3 | 120.0 |
| 39"                                             | 96.0         |                  | 120.0 | 120.0 | 110.1            | 120.0 | 93.5             | 120.0 |       |
| 42"                                             | 96.0         |                  | 116.6 | 120.0 | 102.2            | 120.0 | 86.8             | 120.0 |       |
| 45"                                             | 89.6         |                  | 108.8 | 120.0 | 95.4             | 120.0 | 81.0             | 113.4 |       |
| 48"                                             | 84.0         |                  | 108.0 | 120.0 | 95.4             | 120.0 | 81.0             | 106.3 |       |
| 51"                                             | 79.1         |                  | 101.6 | 118.6 | 92.6             | 117.8 | 78.6             | 100.1 |       |
| 54"                                             | 79.1         |                  | 96.0  | 117.3 | 87.4             | 117.8 | 74.3             | 100.1 |       |
| 57"                                             | 75.8         |                  | 90.9  | 111.2 | 82.8             | 113.0 | 70.4             | 96.0  |       |
| 60"                                             | 72.0         |                  | 90.9  | 105.6 | 82.8             | 107.3 | 70.4             | 91.2  |       |
| 63"                                             | 68.6         |                  | 86.9  | 100.6 | 81.8             | 102.2 | 69.5             | 86.8  |       |
| 36"                                             | 162"         |                  | 100.1 | 120.0 | 120.0            | 114.8 | 120.0            | 97.5  | 120.0 |
| 39"                                             |              |                  | 92.4  | 120.0 | 120.0            | 106.0 | 120.0            | 90.0  | 117.0 |
| 42"                                             |              | 92.4             | 112.3 | 120.0 | 98.4             | 120.0 | 83.6             | 117.0 |       |
| 45"                                             |              | 86.3             | 104.8 | 120.0 | 91.9             | 120.0 | 78.0             | 109.2 |       |
| 48"                                             |              | 80.9             | 104.0 | 120.0 | 91.9             | 120.0 | 78.0             | 102.4 |       |
| 51"                                             |              | 76.1             | 97.9  | 114.2 | 89.2             | 113.5 | 75.7             | 96.4  |       |
| 54"                                             |              | 76.1             | 92.4  | 113.0 | 84.2             | 113.5 | 71.5             | 96.4  |       |
| 57"                                             |              | 73.0             | 87.6  | 107.0 | 79.8             | 108.8 | 67.8             | 92.4  |       |
| 60"                                             |              | 69.3             | 87.6  | 101.7 | 79.8             | 103.3 | 70.2             | 87.8  |       |
| 36"                                             |              | 168"             | 96.6  | 120.0 | 120.0            | 110.7 | 120.0            | 94.0  | 120.0 |
| 39"                                             |              |                  | 89.1  | 116.6 | 120.0            | 102.2 | 120.0            | 86.8  | 112.9 |
| 42"                                             |              |                  | 89.1  | 108.2 | 120.0            | 94.9  | 120.0            | 80.6  | 112.9 |
| 45"                                             | 83.2         |                  | 101.0 | 120.0 | 88.6             | 120.0 | 75.2             | 105.3 |       |
| 48"                                             | 78.0         |                  | 100.3 | 117.0 | 88.6             | 116.3 | 75.2             | 98.8  |       |
| 51"                                             | 73.4         |                  | 94.4  | 110.1 | 86.0             | 109.4 | 73.0             | 92.9  |       |
| 54"                                             | 73.4         |                  | 89.1  | 109.0 | 81.2             | 109.4 | 69.0             | 92.9  |       |
| 57"                                             | 70.4         |                  | 84.5  | 103.2 | 76.9             | 104.9 | 65.3             | 89.1  |       |
| 60"                                             | 66.9         |                  | 84.5  | 98.1  | 76.9             | 99.6  | 65.3             | 84.6  |       |



$$WIDTH (W) = \frac{W1 + W2}{2}$$



ANCHORS TYPES: SEE SHEET 7 FOR DESCRIPTION

- A3 = (3) ANCHORS TYPE 'A' AT EACH SIDE OF MULLION
- A4 = (4) ANCHORS TYPE 'A' AT EACH SIDE OF MULLION
- A5 = (5) ANCHORS TYPE 'A' AT EACH SIDE OF MULLION
- B2 = (2) ANCHORS TYPE 'B' AT EACH SIDE OF MULLION
- B3 = (3) ANCHORS TYPE 'B' AT EACH SIDE OF MULLION
- C2 = (2) ANCHORS TYPE 'C' AT EACH SIDE OF MULLION
- C3 = (3) ANCHORS TYPE 'C' AT EACH SIDE OF MULLION

ALL OTHER ANCHORS TO BE SPACED AS PER ELEVATION.

Approved as complying with the Florida Building Code  
 Date MARCH 02, 2006  
 NOA# 05-030102  
 Miami Code Product Control  
 Division  
 By Ishag L. Chant

Engr. DR. HUMAYOUN FAROOQ  
 STRUCTURES  
 FLA. PE # 16557  
 C.A.N. 3538

FEB 09 2006

**AL-FAROOQ CORPORATION**  
 ENGINEERS, PLANNERS & PRODUCT DESIGN  
 1235 SW 87 AVE  
 MIAMI, FLORIDA 33174  
 TEL. (305) 264-8100 FAX. (305) 262-6978  
 STORE W04-104CTC

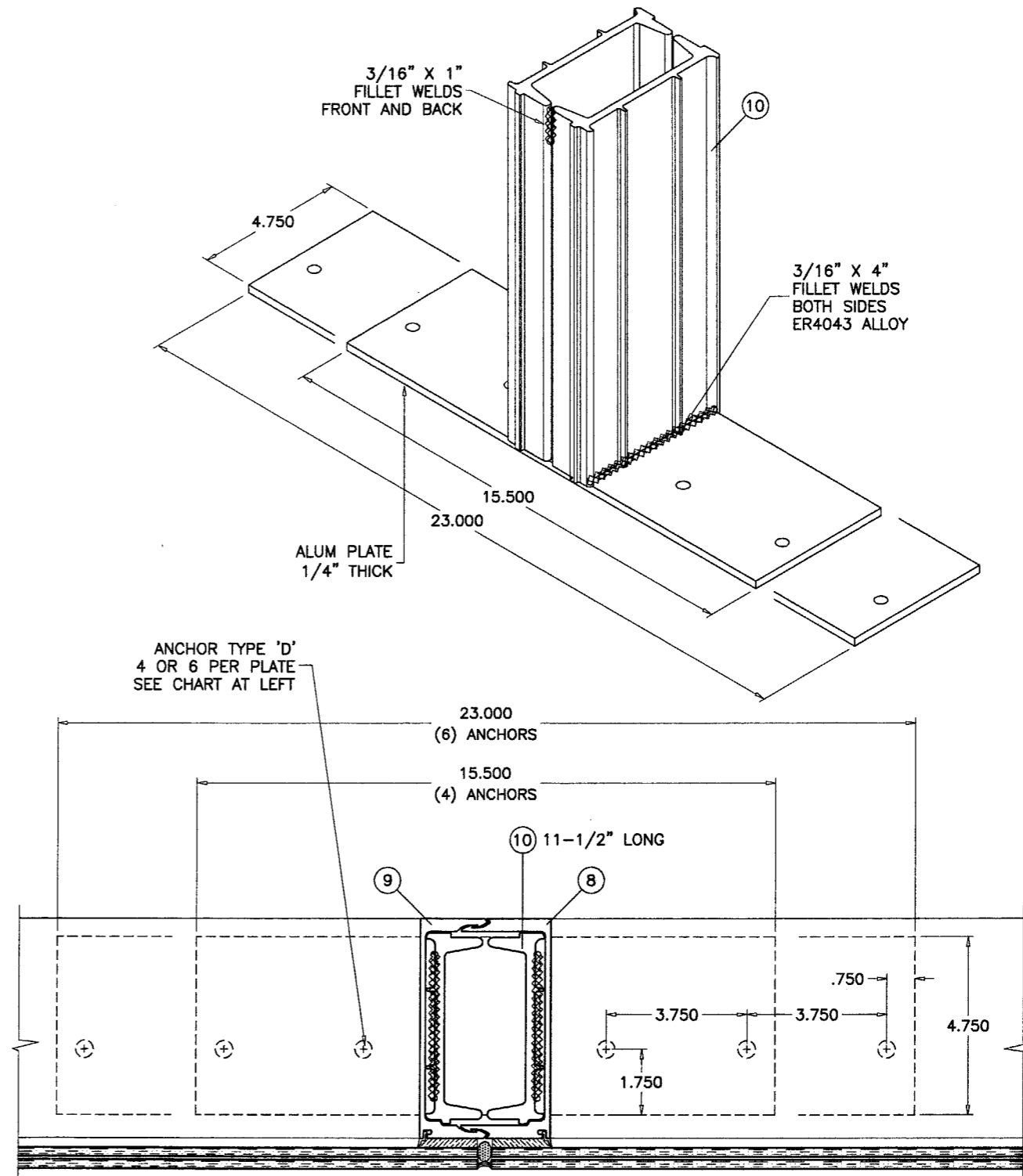
PRO-TECH 75G ALUM CURTAIN WALL SYSTEM (S.M.I.)  
**CRAWFORD TRACEY CORPORATION**  
 3301 SW 13TH DRIVE  
 DEERFIELD BEACH, FL. 33442-8101  
 TEL. (954) 698-6888 FAX. (954) 698-6889

| NO. | DATE     | BY                     | DESCRIPTION |
|-----|----------|------------------------|-------------|
| A   | 09.16.05 | REV. PER BCCO COMMENTS |             |
| B   | 02.08.06 | REV. PER BCCO COMMENTS |             |

date: 12-29-04  
 scale: 3/8"=1'-0"  
 dr. by: HAMID  
 chk. by:  
 drawing no. **W04-104**  
 sheet 5 of 13

| ANCHOR LOAD CAPACITY - PSF<br>EXT.(+) & INT.(-) |              |                                    |                      |                                    |                      |
|-------------------------------------------------|--------------|------------------------------------|----------------------|------------------------------------|----------------------|
| NOMINAL DIMS.                                   |              | 4 ANCHORS<br>PER PLATE<br>TYPE 'D' |                      | 6 ANCHORS<br>PER PLATE<br>TYPE 'D' |                      |
| WIDTH (W)                                       | FRAME HEIGHT | 2-1/4"<br>EDGE DIST.               | 3-1/4"<br>EDGE DIST. | 2-1/4"<br>EDGE DIST.               | 3-1/4"<br>EDGE DIST. |
| 36"                                             | 120"         | 120.0                              | 120.0                | 120.0                              | 120.0                |
| 39"                                             |              | 120.0                              | 120.0                | 120.0                              | 120.0                |
| 42"                                             |              | 120.0                              | 120.0                | 120.0                              | 120.0                |
| 45"                                             |              | 120.0                              | 120.0                | 120.0                              | 120.0                |
| 48"                                             |              | 120.0                              | 120.0                | 120.0                              | 120.0                |
| 51"                                             |              | 113.6                              | 120.0                | 120.0                              | 120.0                |
| 54"                                             |              | 107.3                              | 120.0                | 120.0                              | 120.0                |
| 57"                                             |              | 101.7                              | 120.0                | 120.0                              | 120.0                |
| 60"                                             |              | 96.6                               | 120.0                | 120.0                              | 120.0                |
| 63"                                             |              | 92.0                               | 120.0                | 120.0                              | 120.0                |
| 66"                                             |              | 87.8                               | 117.1                | 120.0                              | 120.0                |
| 69"                                             |              | 84.0                               | 112.0                | 120.0                              | 120.0                |
| 72"                                             | 80.5         | 107.3                              | 120.0                | 120.0                              |                      |
| 36"                                             | 126"         | 120.0                              | 120.0                | 120.0                              | 120.0                |
| 39"                                             |              | 120.0                              | 120.0                | 120.0                              | 120.0                |
| 42"                                             |              | 120.0                              | 120.0                | 120.0                              | 120.0                |
| 45"                                             |              | 120.0                              | 120.0                | 120.0                              | 120.0                |
| 48"                                             |              | 115.0                              | 120.0                | 120.0                              | 120.0                |
| 51"                                             |              | 108.2                              | 120.0                | 120.0                              | 120.0                |
| 54"                                             |              | 102.2                              | 120.0                | 120.0                              | 120.0                |
| 57"                                             |              | 96.8                               | 120.0                | 120.0                              | 120.0                |
| 60"                                             |              | 92.0                               | 120.0                | 120.0                              | 120.0                |
| 63"                                             |              | 87.6                               | 116.8                | 120.0                              | 120.0                |
| 66"                                             |              | 83.6                               | 111.5                | 120.0                              | 120.0                |
| 69"                                             |              | 80.0                               | 106.6                | 120.0                              | 120.0                |
| 72"                                             | 76.7         | 102.2                              | 115.0                | 120.0                              |                      |
| 36"                                             | 132"         | 120.0                              | 120.0                | 120.0                              | 120.0                |
| 39"                                             |              | 120.0                              | 120.0                | 120.0                              | 120.0                |
| 42"                                             |              | 120.0                              | 120.0                | 120.0                              | 120.0                |
| 45"                                             |              | 117.1                              | 120.0                | 120.0                              | 120.0                |
| 48"                                             |              | 109.8                              | 120.0                | 120.0                              | 120.0                |
| 51"                                             |              | 103.3                              | 120.0                | 120.0                              | 120.0                |
| 54"                                             |              | 97.6                               | 120.0                | 120.0                              | 120.0                |
| 57"                                             |              | 92.4                               | 120.0                | 120.0                              | 120.0                |
| 60"                                             |              | 87.8                               | 117.1                | 120.0                              | 120.0                |
| 63"                                             |              | 83.6                               | 111.5                | 120.0                              | 120.0                |
| 66"                                             |              | 79.8                               | 106.4                | 119.7                              | 120.0                |
| 69"                                             |              | 76.4                               | 101.8                | 114.5                              | 120.0                |
| 72"                                             | 73.2         | 97.5                               | 109.8                | 120.0                              |                      |
| 36"                                             | 138"         | 120.0                              | 120.0                | 120.0                              | 120.0                |
| 39"                                             |              | 120.0                              | 120.0                | 120.0                              | 120.0                |
| 42"                                             |              | 120.0                              | 120.0                | 120.0                              | 120.0                |
| 45"                                             |              | 112.0                              | 120.0                | 120.0                              | 120.0                |
| 48"                                             |              | 105.0                              | 120.0                | 120.0                              | 120.0                |
| 51"                                             |              | 98.8                               | 120.0                | 120.0                              | 120.0                |
| 54"                                             |              | 93.3                               | 120.0                | 120.0                              | 120.0                |
| 57"                                             |              | 88.4                               | 117.9                | 120.0                              | 120.0                |
| 60"                                             |              | 84.0                               | 112.0                | 120.0                              | 120.0                |
| 63"                                             |              | 80.0                               | 106.6                | 120.0                              | 120.0                |
| 66"                                             |              | 76.4                               | 101.8                | 114.5                              | 120.0                |
| 69"                                             |              | 73.0                               | 97.4                 | 109.6                              | 120.0                |
| 72"                                             | 70.0         | 93.3                               | 105.0                | 120.0                              |                      |

| ANCHOR LOAD CAPACITY - PSF<br>EXT.(+) & INT.(-) |              |                                    |                      |                                    |                      |       |
|-------------------------------------------------|--------------|------------------------------------|----------------------|------------------------------------|----------------------|-------|
| NOMINAL DIMS.                                   |              | 4 ANCHORS<br>PER PLATE<br>TYPE 'D' |                      | 6 ANCHORS<br>PER PLATE<br>TYPE 'D' |                      |       |
| WIDTH (W)                                       | FRAME HEIGHT | 2-1/4"<br>EDGE DIST.               | 3-1/4"<br>EDGE DIST. | 2-1/4"<br>EDGE DIST.               | 3-1/4"<br>EDGE DIST. |       |
| 36"                                             | 144"         | 120.0                              | 120.0                | 120.0                              | 120.0                |       |
| 39"                                             |              | 120.0                              | 120.0                | 120.0                              | 120.0                |       |
| 42"                                             |              | 115.0                              | 120.0                | 120.0                              | 120.0                |       |
| 45"                                             |              | 107.3                              | 120.0                | 120.0                              | 120.0                |       |
| 48"                                             |              | 100.6                              | 120.0                | 120.0                              | 120.0                |       |
| 51"                                             |              | 94.7                               | 120.0                | 120.0                              | 120.0                |       |
| 54"                                             |              | 89.4                               | 119.2                | 120.0                              | 120.0                |       |
| 57"                                             |              | 84.7                               | 112.9                | 120.0                              | 120.0                |       |
| 60"                                             |              | 80.5                               | 107.3                | 120.0                              | 120.0                |       |
| 63"                                             |              | 76.7                               | 102.2                | 115.0                              | 120.0                |       |
| 66"                                             |              | 73.2                               | 97.5                 | 109.8                              | 120.0                |       |
| 69"                                             |              | 70.0                               | 93.3                 | 105.0                              | 120.0                |       |
| 36"                                             | 150"         | 120.0                              | 120.0                | 120.0                              | 120.0                |       |
| 39"                                             |              | 118.9                              | 120.0                | 120.0                              | 120.0                |       |
| 42"                                             |              | 110.4                              | 120.0                | 120.0                              | 120.0                |       |
| 45"                                             |              | 103.0                              | 120.0                | 120.0                              | 120.0                |       |
| 48"                                             |              | 96.6                               | 120.0                | 120.0                              | 120.0                |       |
| 51"                                             |              | 90.9                               | 120.0                | 120.0                              | 120.0                |       |
| 54"                                             |              | 85.9                               | 114.5                | 120.0                              | 120.0                |       |
| 57"                                             |              | 81.3                               | 108.4                | 120.0                              | 120.0                |       |
| 60"                                             |              | 77.3                               | 103.0                | 115.9                              | 120.0                |       |
| 63"                                             |              | 73.6                               | 98.1                 | 110.4                              | 120.0                |       |
| 66"                                             |              | 70.3                               | 93.6                 | 105.4                              | 120.0                |       |
| 36"                                             |              | 156"                               | 120.0                | 120.0                              | 120.0                | 120.0 |
| 39"                                             | 114.3        |                                    | 120.0                | 120.0                              | 120.0                |       |
| 42"                                             | 106.2        |                                    | 120.0                | 120.0                              | 120.0                |       |
| 45"                                             | 99.1         |                                    | 120.0                | 120.0                              | 120.0                |       |
| 48"                                             | 92.9         |                                    | 120.0                | 120.0                              | 120.0                |       |
| 51"                                             | 87.4         |                                    | 116.5                | 120.0                              | 120.0                |       |
| 54"                                             | 82.6         |                                    | 110.1                | 120.0                              | 120.0                |       |
| 57"                                             | 78.2         |                                    | 104.3                | 117.3                              | 120.0                |       |
| 60"                                             | 74.3         |                                    | 99.0                 | 111.1                              | 120.0                |       |
| 63"                                             | 70.8         |                                    | 94.3                 | 106.1                              | 120.0                |       |
| 36"                                             | 162"         |                                    | 119.3                | 120.0                              | 120.0                | 120.0 |
| 39"                                             |              |                                    | 110.1                | 120.0                              | 120.0                | 120.0 |
| 42"                                             |              | 102.2                              | 120.0                | 120.0                              | 120.0                |       |
| 45"                                             |              | 95.4                               | 120.0                | 120.0                              | 120.0                |       |
| 48"                                             |              | 89.4                               | 119.2                | 120.0                              | 120.0                |       |
| 51"                                             |              | 84.2                               | 112.2                | 120.0                              | 120.0                |       |
| 54"                                             |              | 79.5                               | 106.0                | 119.2                              | 120.0                |       |
| 57"                                             |              | 75.3                               | 100.4                | 113.0                              | 120.0                |       |
| 60"                                             |              | 71.6                               | 95.4                 | 107.3                              | 120.0                |       |
| 36"                                             |              | 168"                               | 115.0                | 120.0                              | 120.0                | 120.0 |
| 39"                                             |              |                                    | 106.2                | 120.0                              | 120.0                | 120.0 |
| 42"                                             |              |                                    | 98.6                 | 120.0                              | 120.0                | 120.0 |
| 45"                                             | 92.0         |                                    | 120.0                | 120.0                              | 120.0                |       |
| 48"                                             | 86.3         |                                    | 115.0                | 120.0                              | 120.0                |       |
| 51"                                             | 81.2         |                                    | 108.2                | 120.0                              | 120.0                |       |
| 54"                                             | 76.7         |                                    | 102.2                | 115.0                              | 120.0                |       |
| 57"                                             | 72.6         |                                    | 96.8                 | 108.9                              | 120.0                |       |
| 60"                                             | 69.0         |                                    | 92.0                 | 103.5                              | 120.0                |       |



**TYPICAL ANCHORS:**

TYPE 'D' - 3/8" DIA. POWERS WEDGE-BOLT ANCHOR  
 DIRECTLY INTO CONCRETE  
 1-1/2" MIN. EMBED INTO CONC. (3000 PSI MIN.)  
 EDGE DIST. (SEE CHARTS)

Engr. DR. HUMAYOUN FAROOQ  
 STRUCTURES  
 FLA. PE # 16557  
 C.A.N. 3538

**FEB 09 2006**

Approved as complying with the  
 Florida Building Code  
 Date MARCH 02, 2006  
 NOAH 05-0301.02  
 Miami Dade Product Control  
 Division  
 By Shag I. Chanda

**afc**

**AL-FAROOQ CORPORATION**  
 ENGINEERS, PLANNERS & PRODUCT DESIGN  
 1235 SW 87 AVE  
 MIAMI, FLORIDA 33174  
 TEL. (305) 264-8100 FAX. (305) 262-6978  
 STORE W04-104CTC

---

**PRO-TECH 75G ALUM CURTAIN WALL SYSTEM (S.M.I.)**  
**CRAWFORD TRACEY CORPORATION**  
 3301 SW 13TH DRIVE  
 DEERFIELD BEACH, FL. 33442-8101  
 TEL. (954) 688-6888 FAX. (954) 688-6889

---

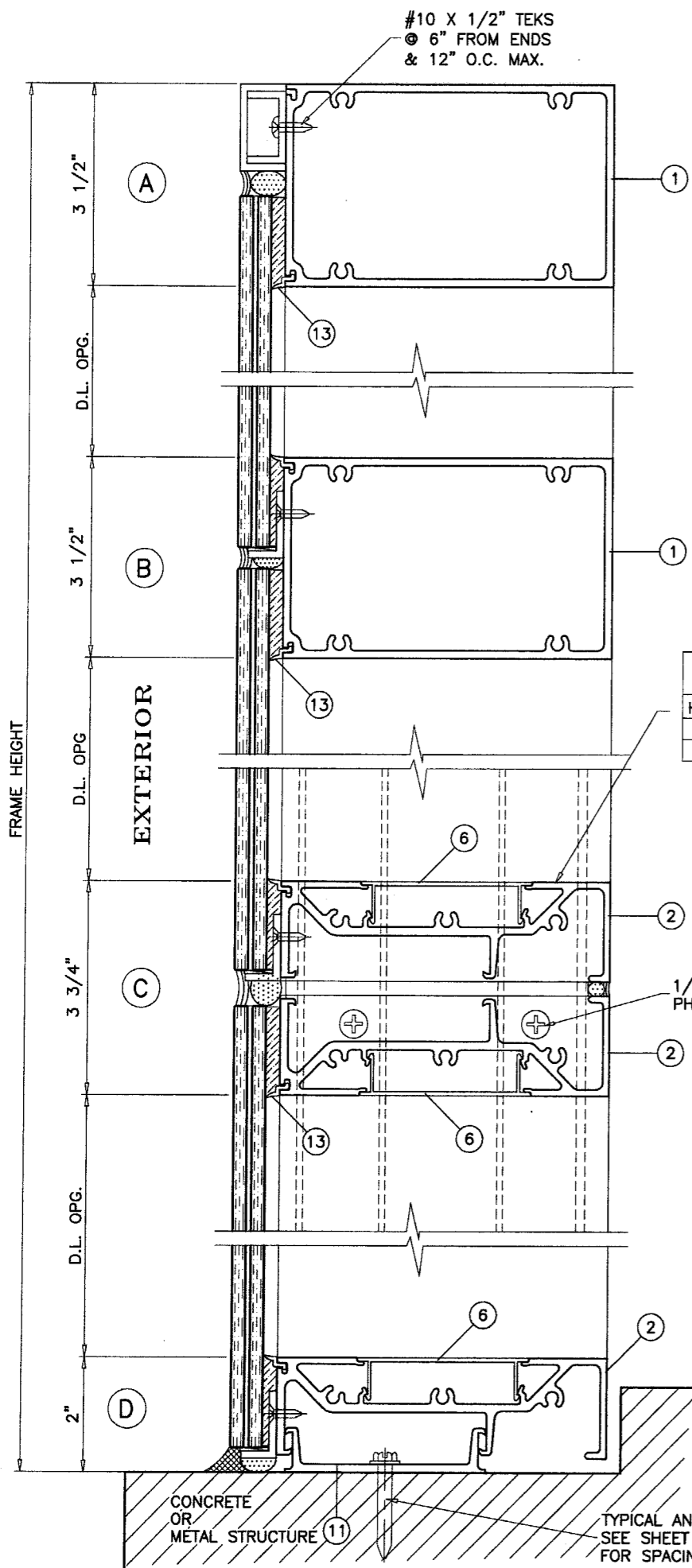
| NO. | DATE     | DESCRIPTION            |
|-----|----------|------------------------|
| A   | 09.16.05 | REV. PER BCCO COMMENTS |
| B   | 02.08.06 | REV. PER BCCO COMMENTS |

---

date: 12-29-04  
 scale: 1/4" = 1"  
 dr. by: HAMID  
 chk. by:

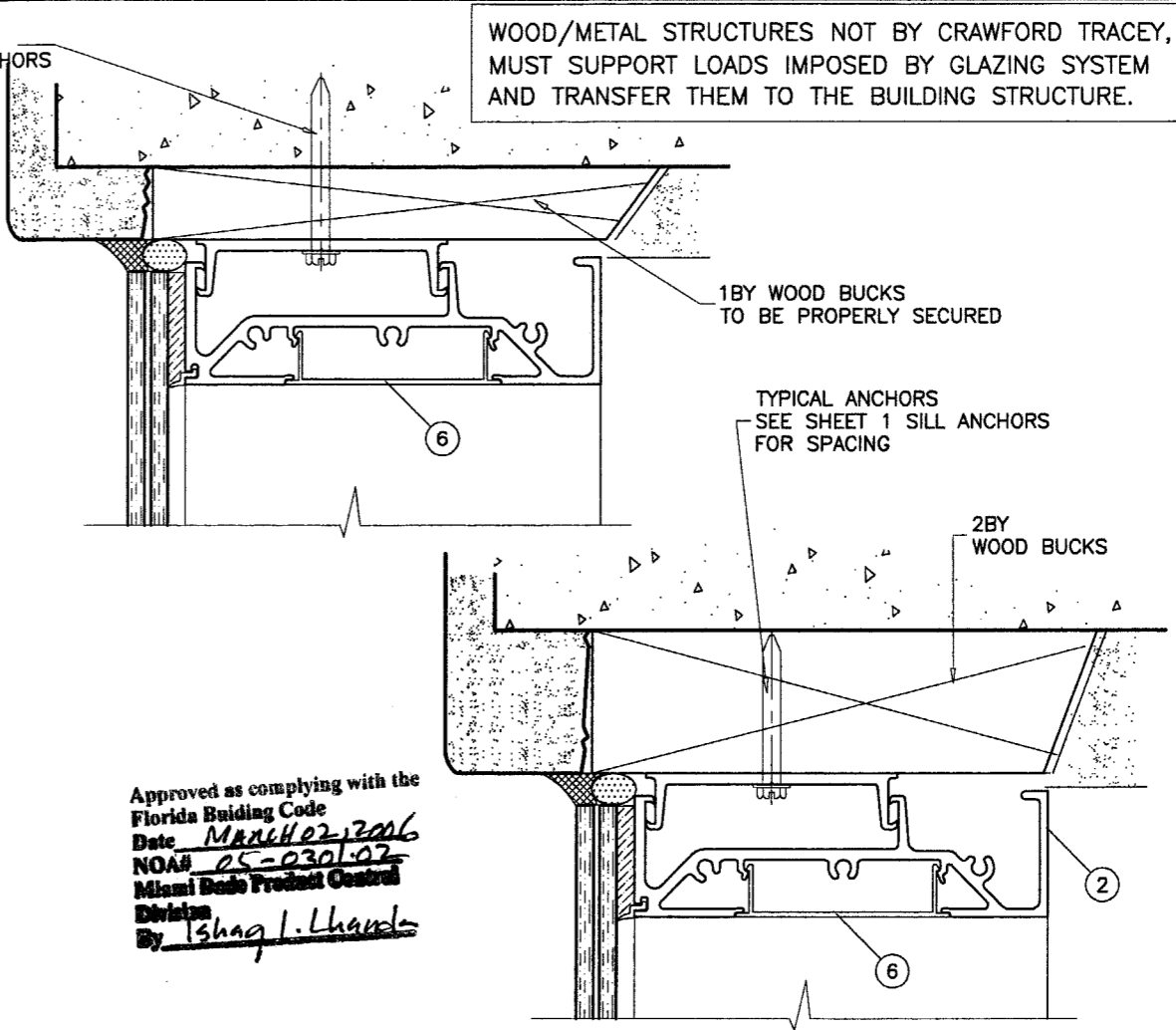
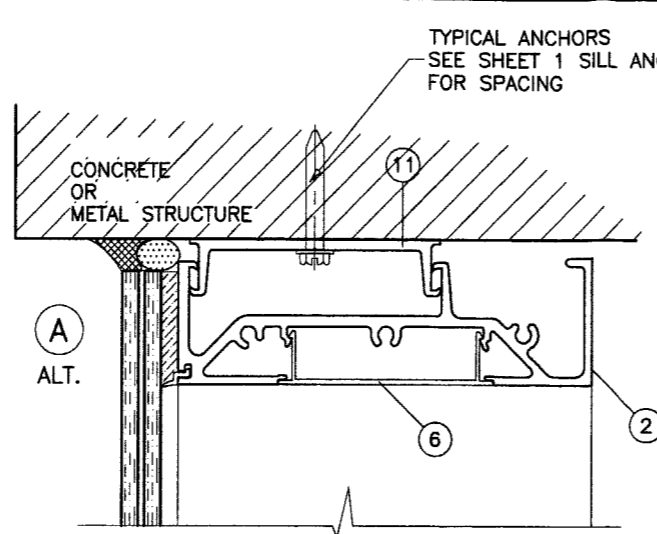
---

drawing no.  
**W04-104**  
 sheet 6 of 13



LIMIT MAX. DESIGN LOADS FOR THIS HORIZONTAL AS FOLLOWS

| HORIZ. SPAN MAX. | LAM. GLASS |
|------------------|------------|
| 60"              | 120 PSF    |
| 68"              | 100 PSF    |



Approved as complying with the Florida Building Code  
 Date MARCH 22, 2006  
 NOA# 05-0301-07  
 Miami Dade Product Control Division  
 By Ishag I. Lhanda

TYPICAL ANCHORS: SEE ELEV. FOR SPACING

- TYPE 'A'- 1/4" TAPCONS BY 'ELCO' INTO WOOD STRUCTURES  
 2" MIN. PENETRATION INTO WOOD  
 THRU WOOD BUCKS INTO CONC. OR MASONRY  
 1-1/4" MIN. EMBED INTO CONC. OR MASONRY BEYOND WOOD
- TYPE 'B'- 1/4" TAPCONS BY 'ELCO' DIRECTLY INTO CONC. OR MASONRY  
 1-1/4" MIN. EMBED INTO CONC. OR MASONRY
- TYPE 'C'- 1/4" TEKS BY ITW OR SELF DRILLING SCREWS (GRADE 5 CRS) INTO METAL STRUCTURES (STEEL OR ALUMINUM 1/8" MIN. THICK.)  
 STEEL : Fy = 36 KSI MIN.  
 ALUMINUM : 6063-T5 MIN.  
 (STEEL IN CONTACT WITH ALUMINUM TO BE PLATED OR PAINTED)

TYPICAL EDGE DISTANCE  
 INTO CONCRETE AND MASONRY = 3" MIN.  
 INTO WOOD STRUCTURE = 1" MIN.

TYPE 'D'- SEE SHEET 6

Engr. DR. HUMAYOUN FAROOQ  
 STRUCTURES  
 FLA. PE # 15557  
 C.A.N. 3538

FEB 09 2006

**AL-FAROOQ CORPORATION**  
 ENGINEERS, PLANNERS & PRODUCT DESIGN  
 1235 SW 87 AVE  
 MIAMI, FLORIDA 33174  
 TEL. (305) 264-8100 FAX. (305) 262-6978  
 STORE W04-104CTC

PRO-TECH 75G ALUM CURTAIN WALL SYSTEM (S.M.I.)

**CRAWFORD TRACEY CORPORATION**  
 3301 SW 13TH DRIVE  
 DEERFIELD BEACH, FL. 33442-8101  
 TEL. (954) 698-6888 FAX. (954) 698-6889

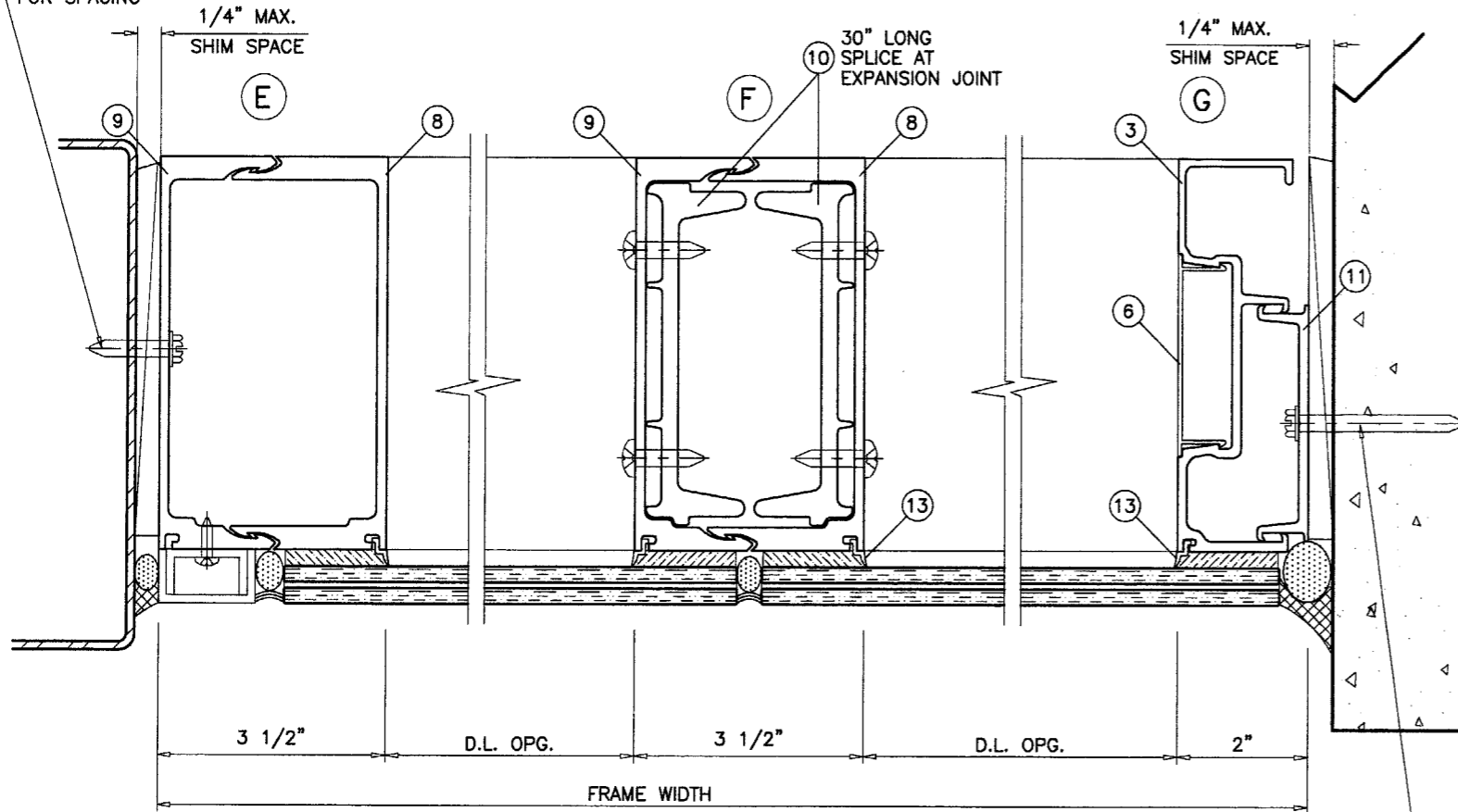
| no | date     | by            | description |
|----|----------|---------------|-------------|
| A  | 09.16.05 | REV. PER BCCO | COMMENTS    |
| B  | 02.08.06 | REV. PER BCCO | COMMENTS    |

date: 12-29-04  
 scale: 3/8" = 1"  
 dr. by: HAMID  
 chk. by:

drawing no.  
**W04-104**

sheet 7 of 13

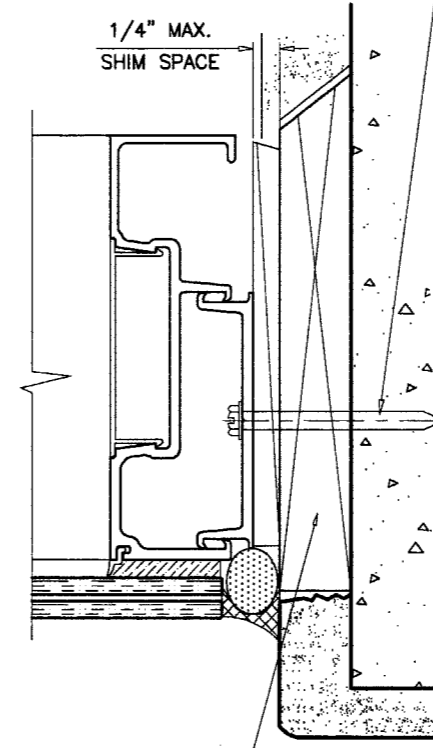
TYPICAL ANCHORS  
SEE SHEET 1  
FOR SPACING



EXTERIOR

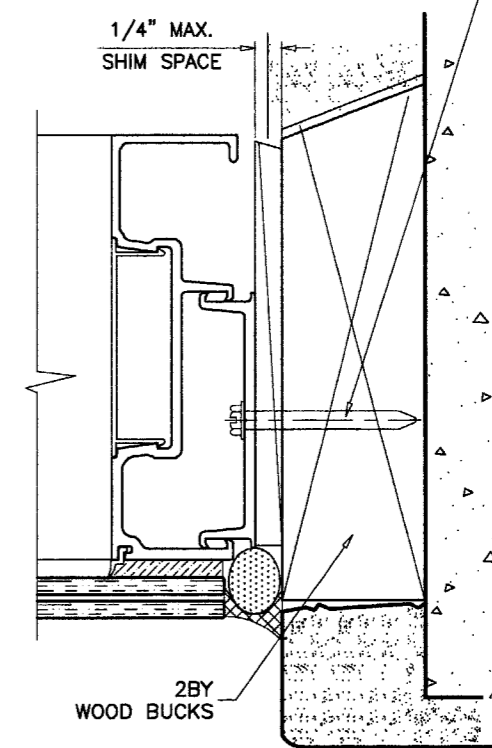
TYPICAL ANCHORS  
SEE SHEET 1  
FOR SPACING

TYPICAL ANCHORS  
SEE SHEET 1  
FOR SPACING



1BY WOOD BUCKS  
TO BE PROPERLY SECURED

TYPICAL ANCHORS  
SEE SHEET 1  
FOR SPACING

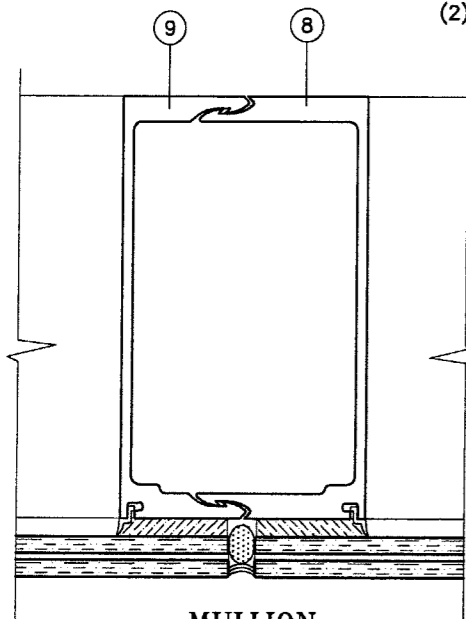


2BY  
WOOD BUCKS

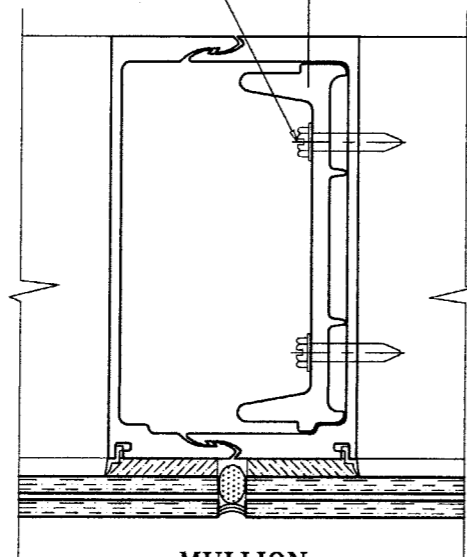
1/4" X 1-1/4" SCREWS  
(2) AT HORIZONTAL LOCATIONS

10 MULL LENGTH - 4"

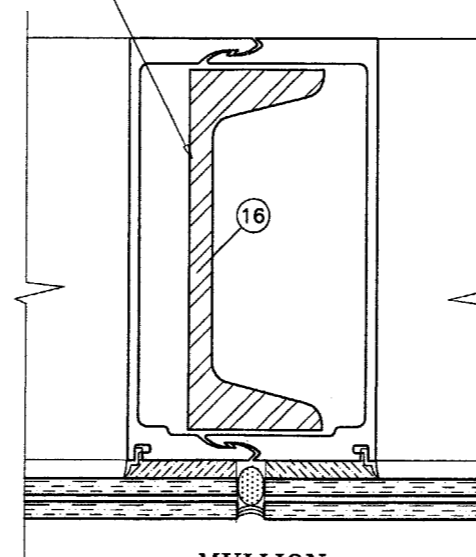
STEEL CHANNEL  
C5 X 9  
MULL LENGTH - 6"



MULLION  
UNREINFORCED



MULLION  
ALUM REINFORCING



MULLION  
STEEL REINFORCING

Approved as complying with the  
Florida Building Code  
Date MARCH 02, 2006  
NOAH 05-0301-02  
Miami Dade Product Control  
Division  
By Ishag J. Chanda

Engr. DR. HUMAYOUN FAROOQ  
STRUCTURES  
FLA. PE # 16557  
C.A.N. 3538

FEB 09 2006



**AL-FAROOQ CORPORATION**  
ENGINEERS, PLANNERS & PRODUCT DESIGN  
1235 SW 87 AVE  
MIAMI, FLORIDA 33174  
TEL. (305) 264-8100 FAX. (305) 262-6978

PRO-TECH 7SG ALUM CURTAIN WALL SYSTEM (S.M.I.)  
**CRAWFORD TRACEY CORPORATION**  
3301 SW 13TH DRIVE  
DEERFIELD BEACH, FL. 33442-8101  
TEL. (954) 688-6888 FAX. (954) 698-6889

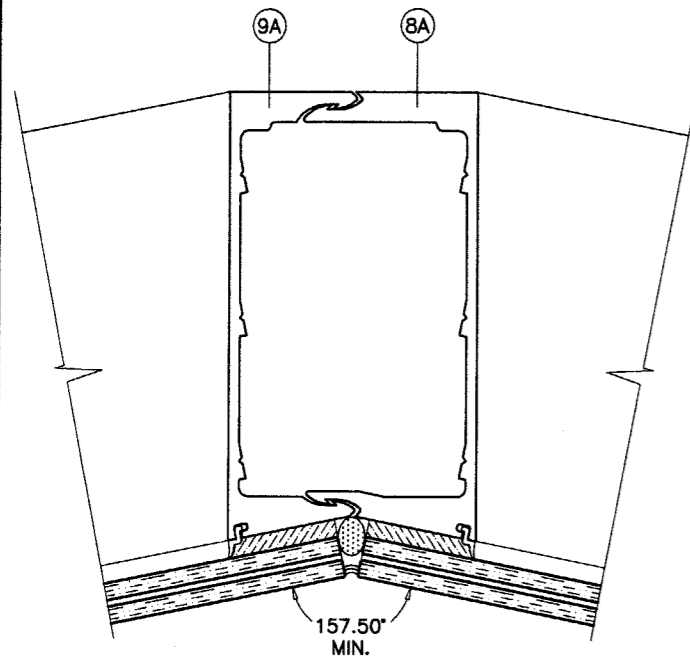
| revisions: |          | no                     | date | by | description |
|------------|----------|------------------------|------|----|-------------|
| A          | 09.16.05 | REV. PER BCCO COMMENTS |      |    |             |
| B          | 02.08.06 | REV. PER BCCO COMMENTS |      |    |             |

date: 12-29-04  
scale: 3/8" = 1"  
dr. by: HAMID  
chk. by:

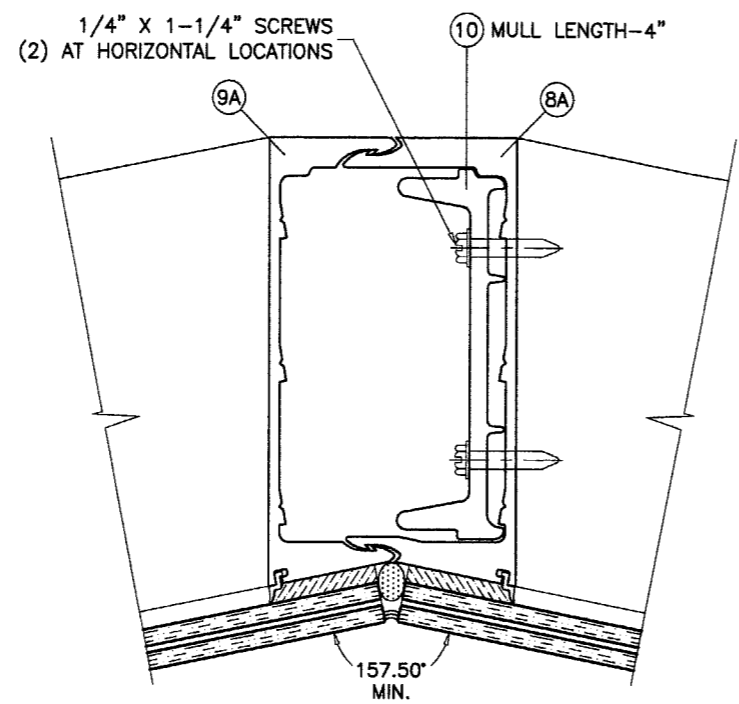
drawing no.  
**W04-104**

sheet 8 of 13

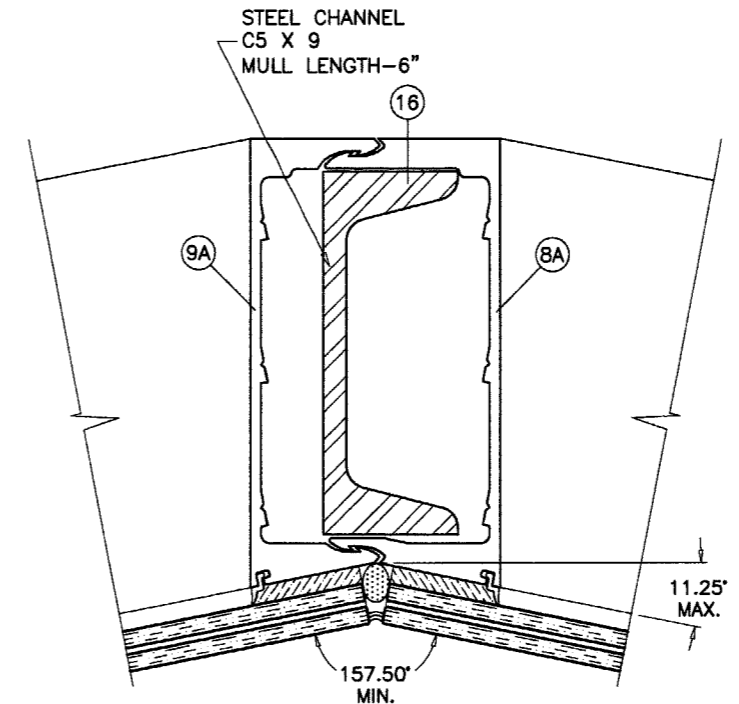
STORE W04-104CTC



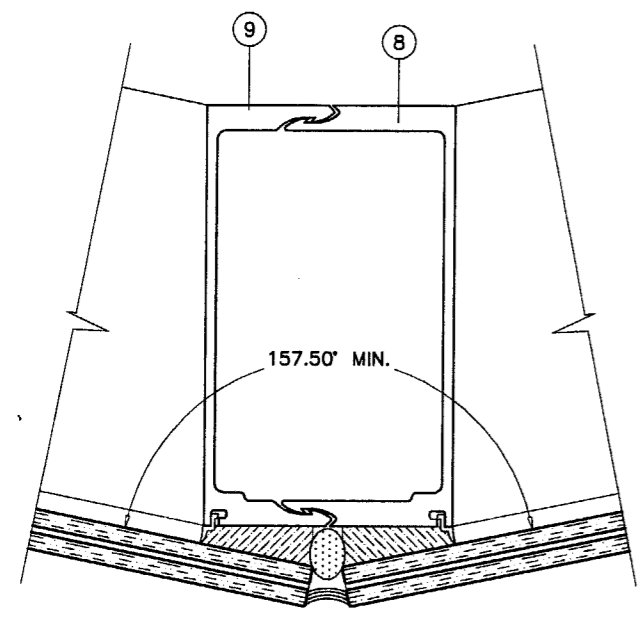
MULLION  
UNREINFORCED  
MAX. L = 120 IN.



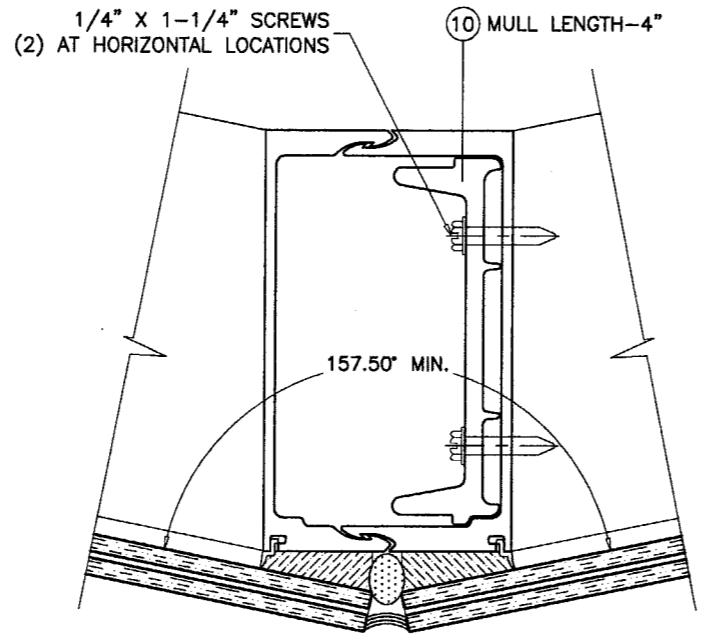
MULLION  
ALUM REINFORCING



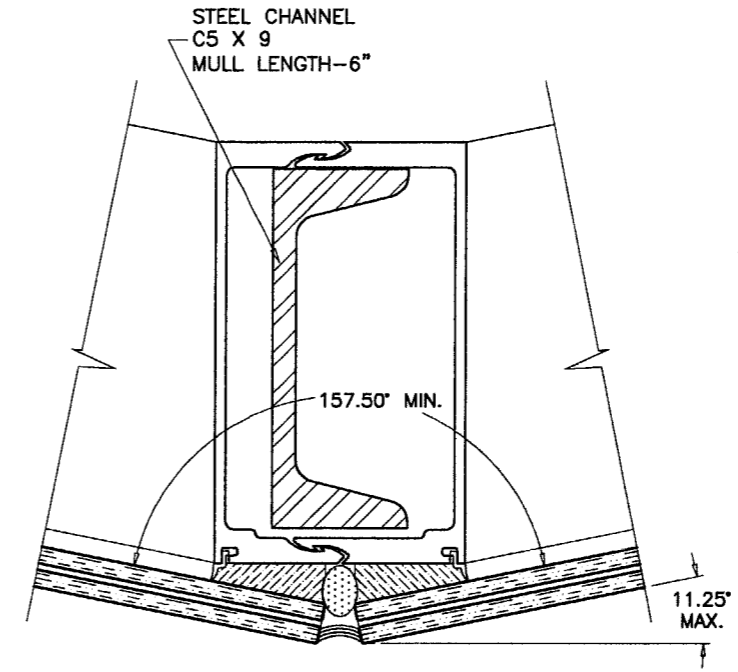
MULLION  
STEEL REINFORCING



MULLION  
UNREINFORCED  
MAX. L = 120 IN.



MULLION  
ALUM REINFORCING



MULLION  
STEEL REINFORCING

Approved as complying with the  
Florida Building Code  
Date MARCH 02, 2006  
NOA# 05-0301.02  
Miami Dade Product Control  
Division  
By Ishag I. Chaudhry

Engr: DR. HUMAYOON FAROOQ  
STRUCTURES  
FLA. PE # 18557  
C.A.N. 3538

FEB 09 2006

afc

AL-FAROOQ CORPORATION  
ENGINEERS, PLANNERS & PRODUCT DESIGN  
1235 SW 87 AVE  
MIAMI, FLORIDA 33174  
TEL. (305) 264-8100 FAX. (305) 262-6978

PRO-TECH 75G ALUM CURTAIN WALL SYSTEM (S.M.I.)  
CRAWFORD TRACEY CORPORATION  
3301 SW 13TH DRIVE  
DEERFIELD BEACH, FL. 33442-8101  
TEL. (954) 698-6888 FAX. (954) 698-6889

| no | date     | description            | by |
|----|----------|------------------------|----|
| A  | 09.16.05 | REV. PER BCCO COMMENTS |    |
| B  | 02.08.06 | NO CHANGE THIS SHEET   |    |

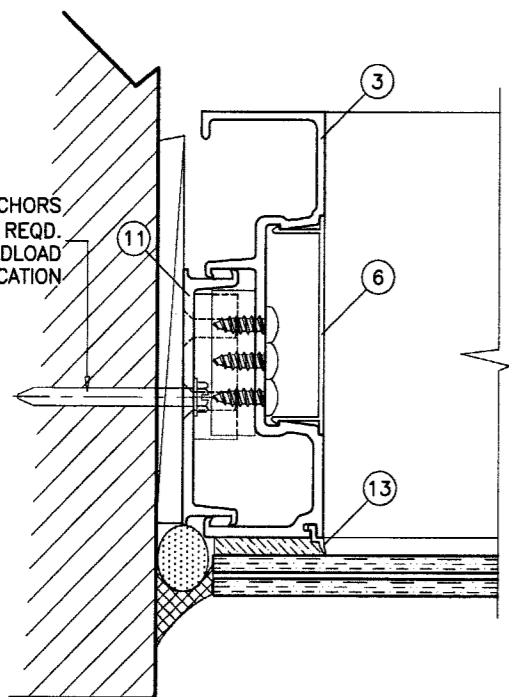
date: 12-29-04  
scale: 3/8" = 1"  
dr. by: HAMID  
chk. by:

drawing no.  
**W04-104**

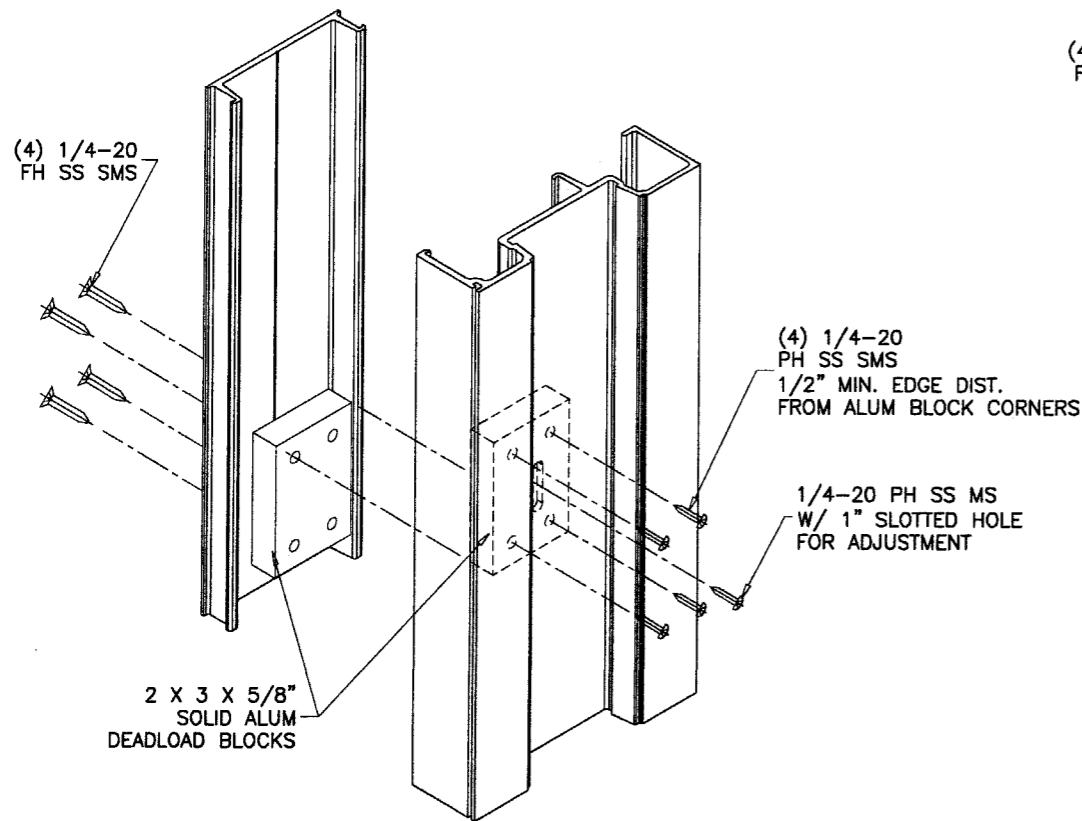
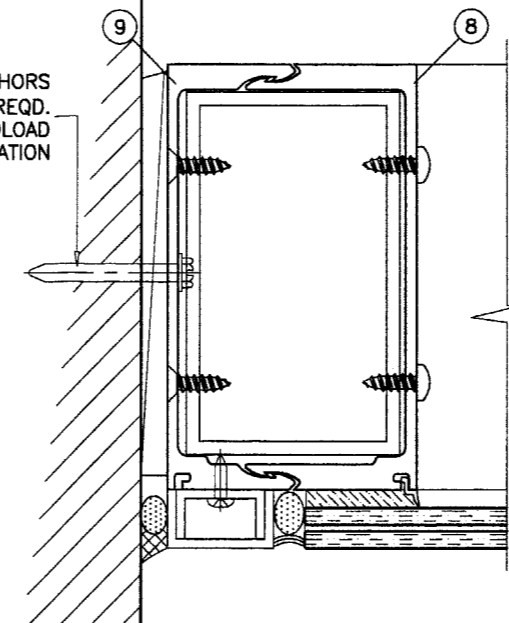
sheet 9 of 13

STORE W04-104CTC

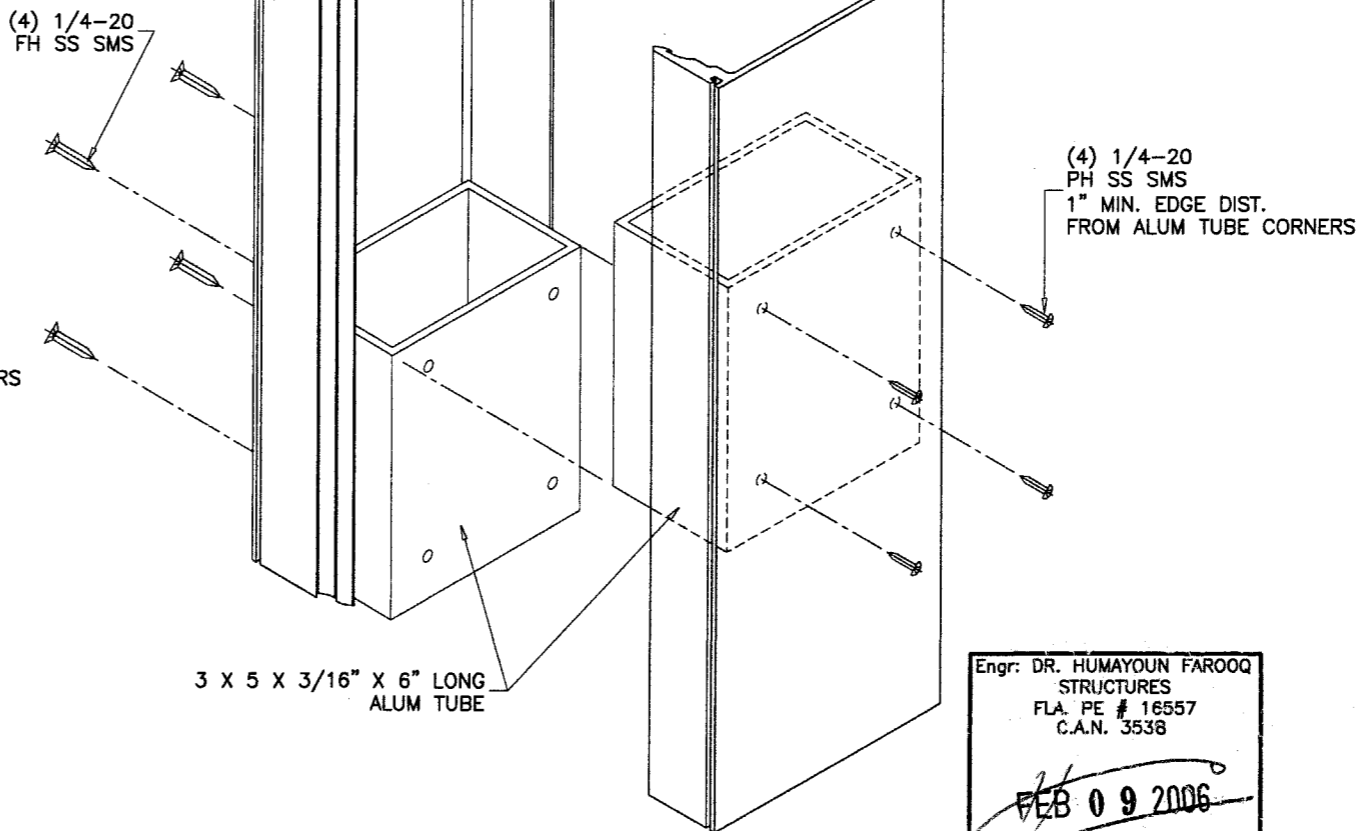
TYPICAL ANCHORS  
(3) ADDL. REQD.  
AT DEADLOAD  
BLOCK LOCATION



TYPICAL ANCHORS  
(3) ADDL. REQD.  
AT DEADLOAD  
BLOCK LOCATION



DEADLOAD BLOCKS DETAIL  
TYPICAL JAMBS



DEADLOAD BLOCKS DETAIL  
ANCHORED MULLION AT JAMB

Approved as complying with the  
Florida Building Code  
Date MARCH 02, 2006  
NOA# 05-0301.02  
Miami Code Product Control  
Division  
By Shag L. Landa

Engr. DR. HUMAYOUN FAROOQ  
STRUCTURES  
FLA. PE # 16557  
C.A.N. 3538

FEB 09 2006

*afc*

**AL-FAROOQ CORPORATION**  
ENGINEERS, PLANNERS & PRODUCT DESIGN  
1235 SW 87 AVE  
MIAMI, FLORIDA 33174  
TEL. (305) 264-8100 FAX. (305) 262-6978

STORE W04-104CTC

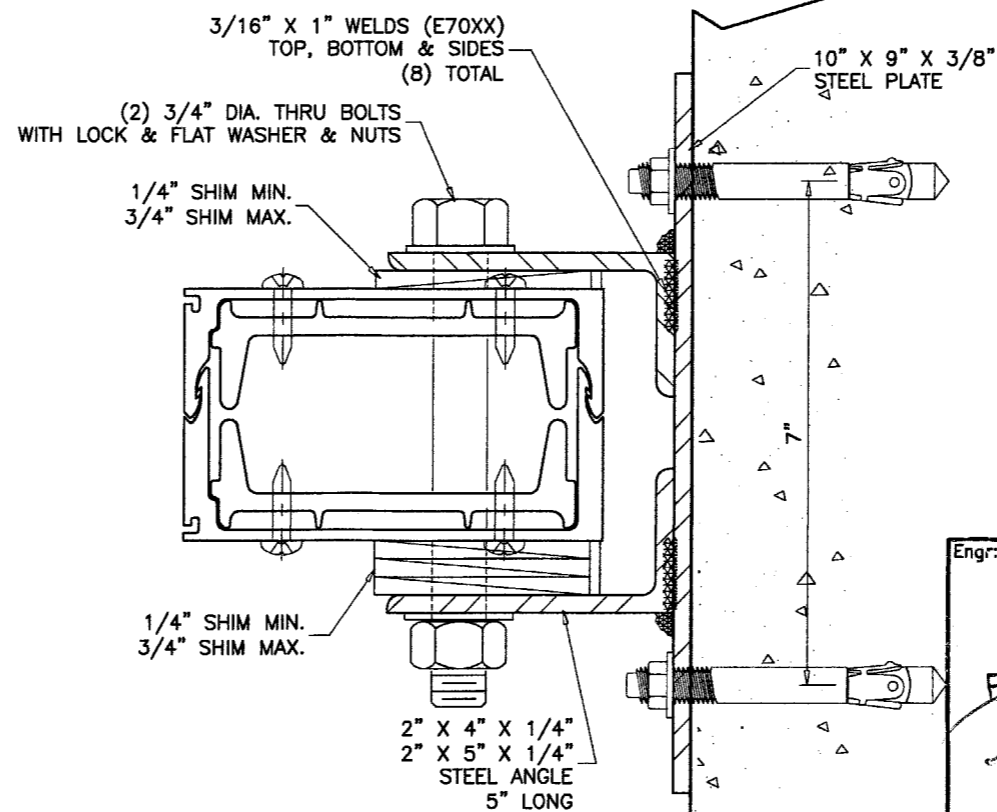
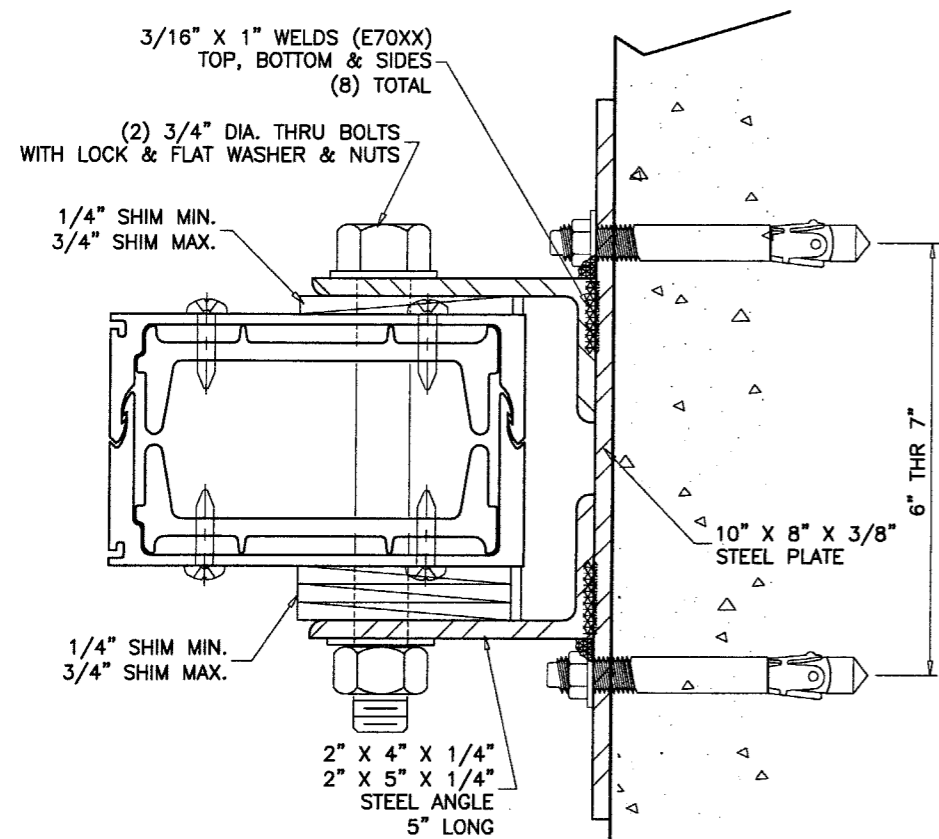
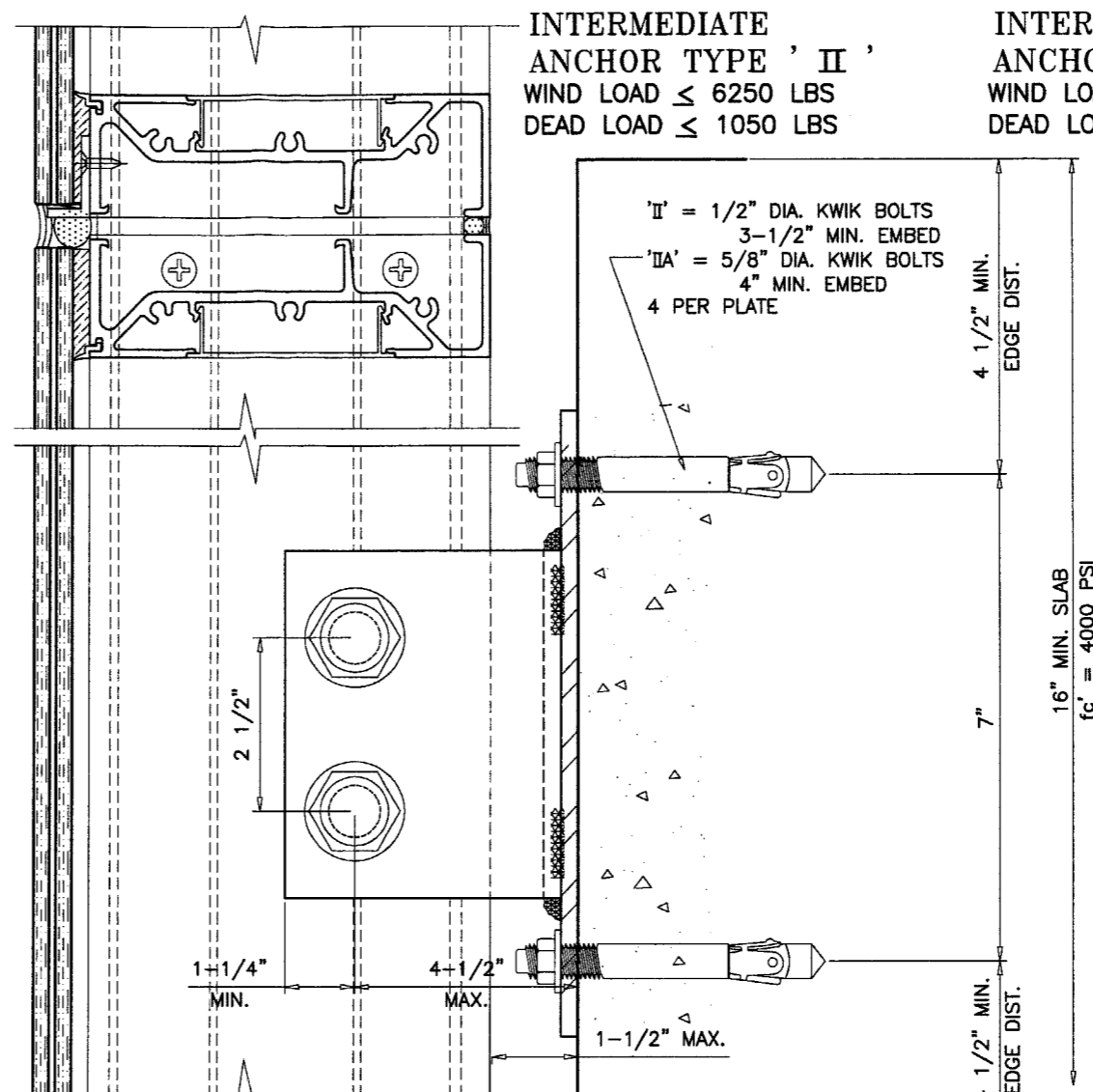
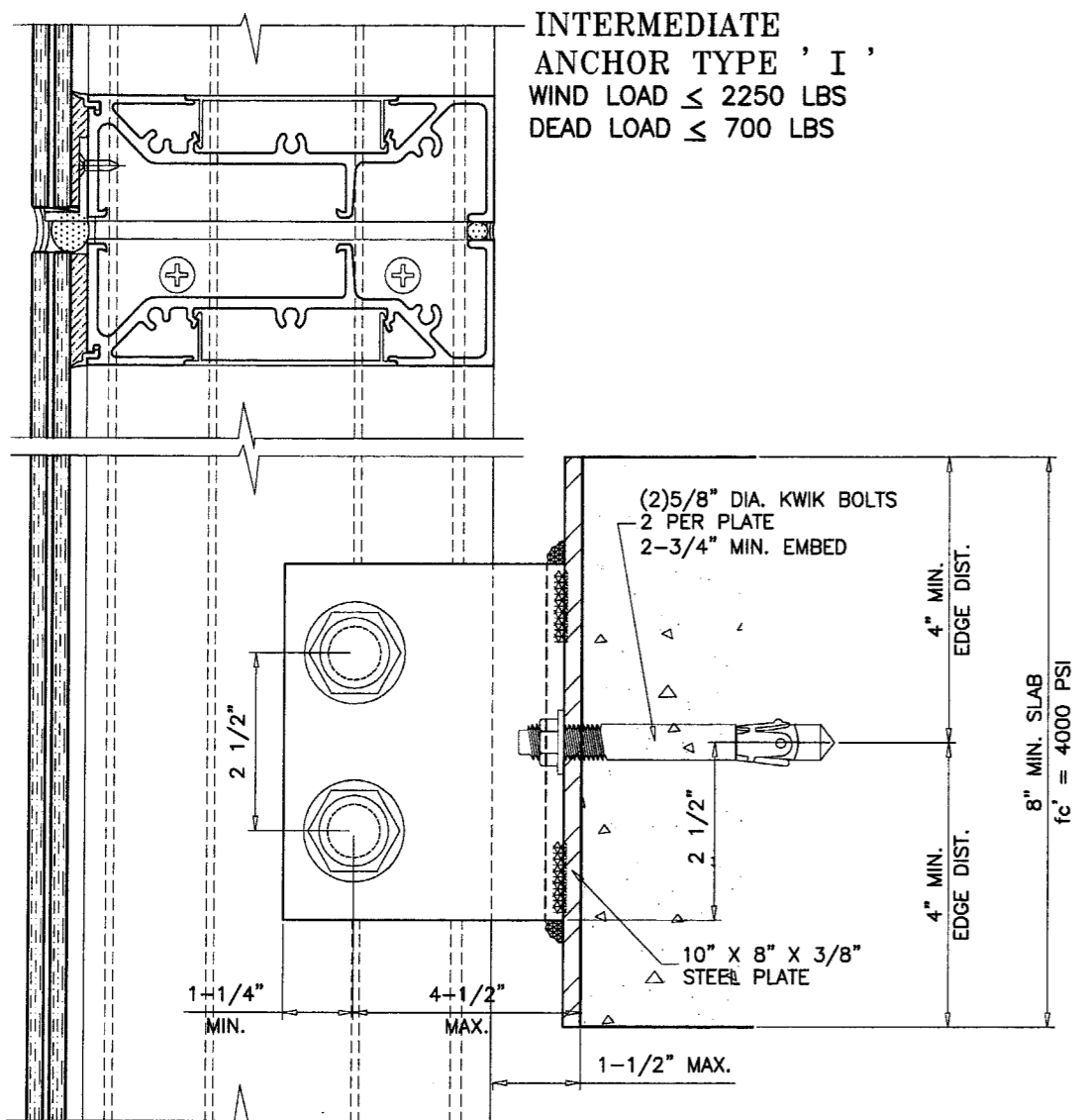
PRO-TECH 7SG ALUM CURTAIN WALL SYSTEM (S.M.I.)  
**CRAWFORD TRACEY CORPORATION**  
3301 SW 13TH DRIVE  
DEERFIELD BEACH, FL. 33442-8101  
TEL. (954) 698-6888 FAX. (954) 698-6889

| revisions: |                               |
|------------|-------------------------------|
| no.        | description                   |
| A          | 09.16.05 NO CHANGE THIS SHEET |
| B          | 02.08.06 NO CHANGE THIS SHEET |

date: 12-29-04  
scale: 3/8" = 1"  
dr. by: HAMID  
chk. by:

drawing no.  
**W04-104**

sheet 10 of 13



Approved as complying with the  
Florida Building Code  
Date MARCH 02, 2006  
NOA# 0500301-02  
Miami Dade Product Control  
Division  
By Shaq I. Chaudh

Engr: DR. HUMAYOUN FAROOQ  
STRUCTURES  
FLA. PE # 16557  
C.A.N. 3538

FEB 09 2006

afc

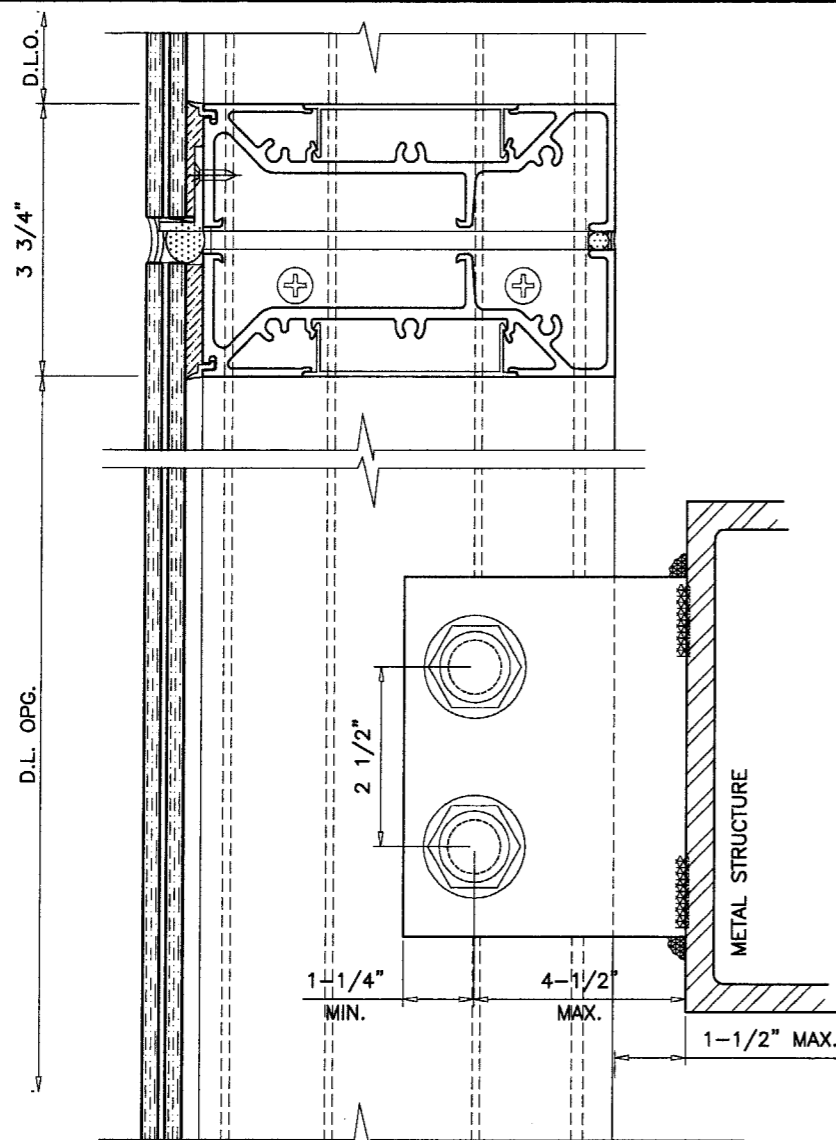
**AL-FAROOQ CORPORATION**  
ENGINEERS, PLANNERS & PRODUCT DESIGN  
1235 SW 87 AVE  
MIAMI, FLORIDA 33174  
TEL. (305) 264-8100 FAX. (305) 262-6978  
STORE/W04-104CTC

**PRO-TECH 75G ALUM CURTAIN WALL SYSTEM (S.M.I.)**  
**CRAWFORD TRACEY CORPORATION**  
3301 SW 13TH DRIVE  
DEERFIELD BEACH, FL. 33442-8101  
TEL. (954) 688-6888 FAX. (954) 698-6889

| revisions: |          |
|------------|----------|
| no         | date     |
| A          | 09.16.05 |
| B          | 02.08.06 |

date: 12-29-04  
scale: 3/8" = 1"  
dr. by: HAMID  
chk. by:

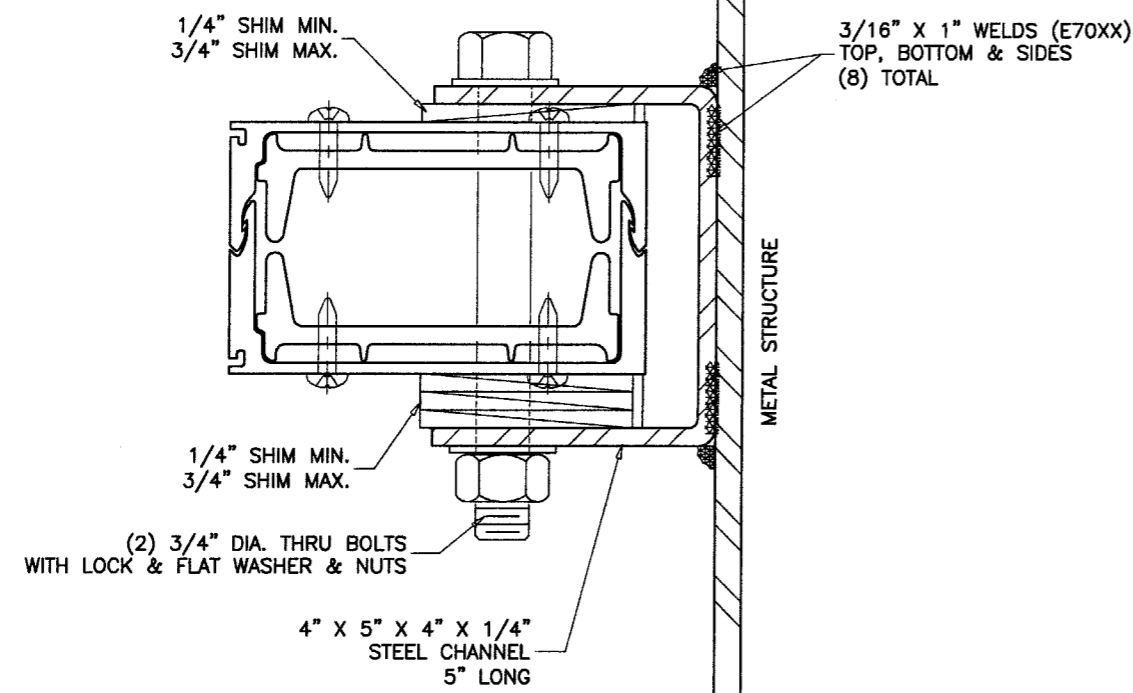
drawing no.  
**W04-104**  
sheet 11 of 13



| ITEM NO. | PART NO.    | QUANTITY | DESCRIPTION           | MATERIAL      | MANF./SUPPLIER/REMARKS |
|----------|-------------|----------|-----------------------|---------------|------------------------|
| 1        | 170H340M    | AS REQD. | FRAME HEAD/HORIZONTAL | 6105-T5       | -                      |
| 2        | 170P175M    | AS REQD. | FRAME HEAD/SILL       | 6105-T5       | -                      |
| 3        | 170J176     | AS REQD. | FRAME JAMB            | 6105-T5       | -                      |
| 4        | -           | AS REQD. | INT. FILLER CHANNEL   | ALUMINUM      | -                      |
| 5        | -           | AS REQD. | EXT. FILLER CHANNEL   | ALUMINUM      | -                      |
| 6        | T30U119     | AS REQD. | SNAP IN COVER         | 6063-T6       | -                      |
| 8        | 170M113     | AS REQD. | MALE JAMB/MULLION     | 6105-T5       | -                      |
| 8A       | 170M115     | AS REQD. | ALT. MALE MULLION     | 6105-T5       | -                      |
| 9        | 170M114     | AS REQD. | FEMALE JAMB/MULLION   | 6105-T5       | -                      |
| 9A       | 170M116     | AS REQD. | ALT. FEMALE MULLION   | 6105-T5       | -                      |
| 10       | 170R140     | AS REQD. | SPLICE                | 6105-T5       | 45" LONG               |
| 11       | B32B070     | AS REQD. | SUB-BUCK              | 6105-T5       | -                      |
| 12       | -           | AS REQD. | 4" LONG SETTING PIECE | ALUMINUM      | AT 1/4 POINTS          |
| 13       | #2          | AS REQD. | GLAZING SPACER        | POLYPROPYLENE | -                      |
| 15       | 1/4"x1-1/4" | AS REQD. | FRAME ASSEMBLY SCREWS | ST. STEEL     | PAN HEAD PHILLIPS      |
| 16       | C5 X 9      | AS REQD. | STEEL CHANNEL         | -             | -                      |

INTERMEDIATE  
ANCHOR TYPE ' III '  
WIND LOAD ≤ 8400 LBS  
DEAD LOAD ≤ 1050 LBS

METAL STRUCTURES NOT BY CRAWFORD TRACEY,  
MUST SUPPORT LOADS IMPOSED BY GLAZING SYSTEM  
AND TRANSFER THEM TO THE BUILDING STRUCTURE.



Approved as complying with the  
Florida Building Code  
Date MAR 10 2006  
NOA# 05-0301-02  
Miami Dade Product Control  
Division  
By Ishaq I. Chande

Engr. DR. HAJMAYGUN FAROOQ  
STRUCTURES  
FLA. PE # 16557  
C.A.N. 3538  
FEB 09 2006

**AL-FAROOQ CORPORATION**  
ENGINEERS, PLANNERS & PRODUCT DESIGN  
1235 SW 87 AVE  
MIAMI, FLORIDA 33174  
TEL. (305) 264-8100 FAX. (305) 262-6978  
STORE W04-104CTC

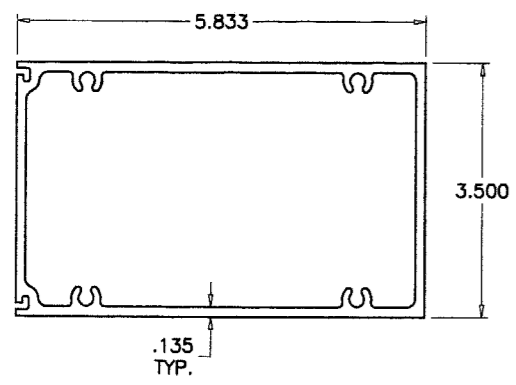
---

PRO-TECH 75G ALUM CURTAIN WALL SYSTEM (S.M.I.)  
**CRAWFORD TRACEY CORPORATION**  
3301 SW 13TH DRIVE  
DEERFIELD BEACH, FL. 33442-8101  
TEL. (954) 698-6888 FAX. (954) 698-6889

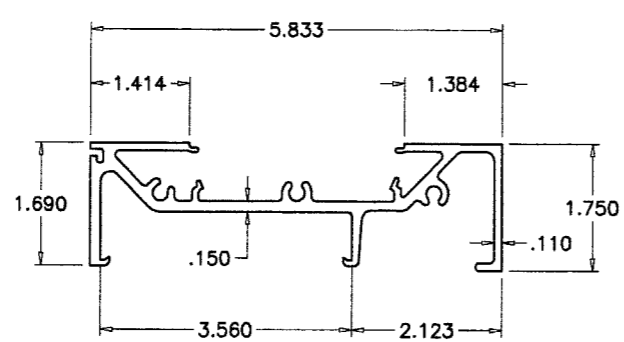
| no. | date     | by | description            |
|-----|----------|----|------------------------|
| A   | 09.16.05 |    | REV. PER BCCO COMMENTS |
| B   | 02.08.06 |    | REV. PER BCCO COMMENTS |

date: 12-29-04  
scale: 3/8" = 1"  
dr. by: HAMID  
chk. by:

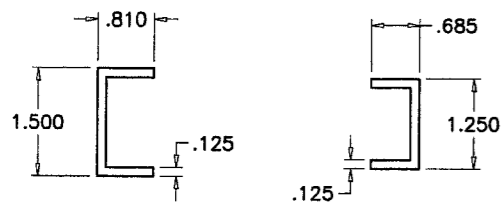
drawing no.  
**W04-104**  
sheet 12 of 13



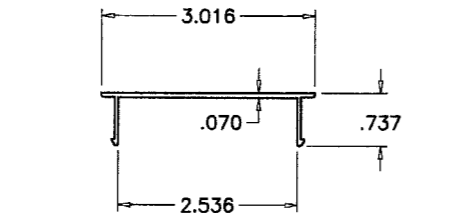
① FRAME HEAD/HORIZONTAL



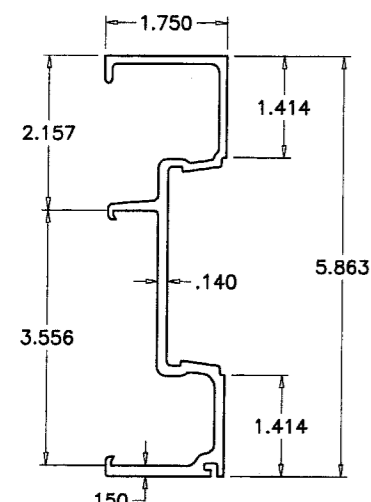
② FRAME HEAD/SILL



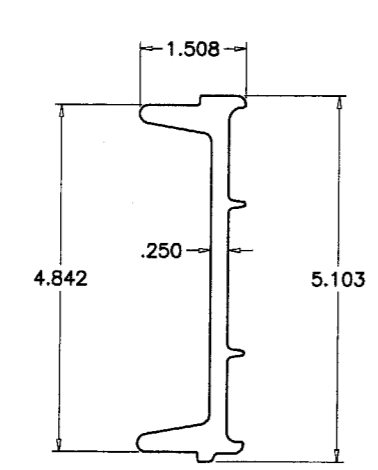
⑤ FILLER CHANNELS



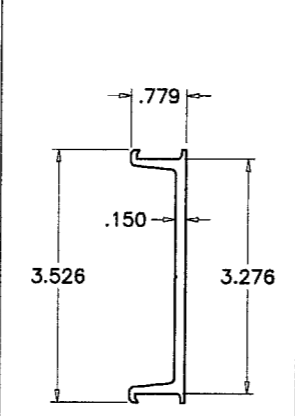
⑥ FRAME COVER



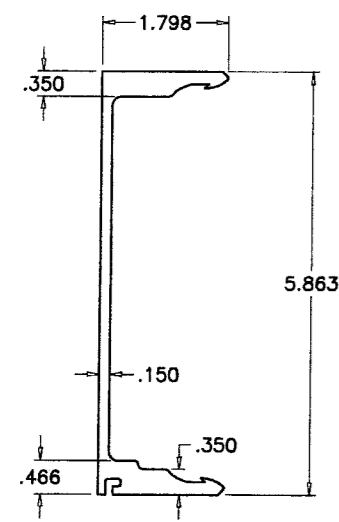
③ FRAME JAMB



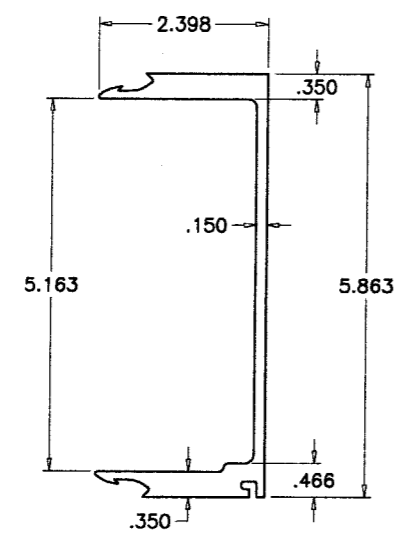
⑩ ALUM REINFORCING OR SPLICE



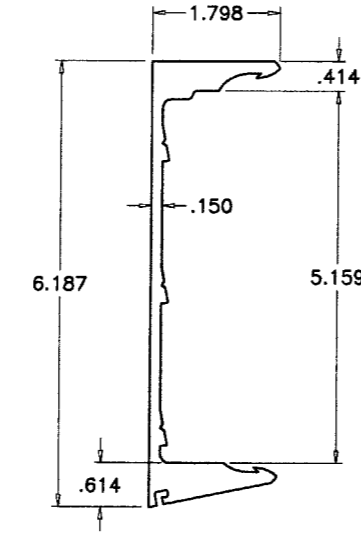
⑪ SUB BUCK



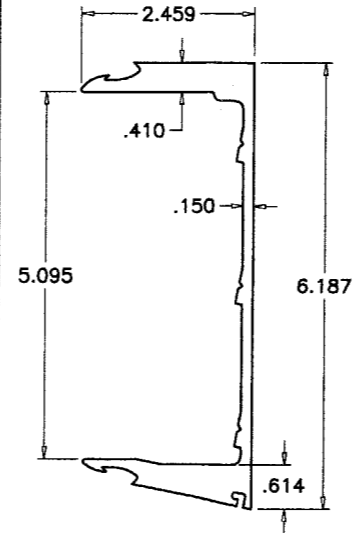
⑨ FEMALE JAMB/MULLION



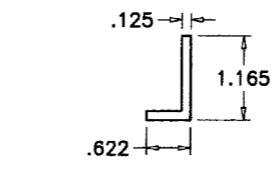
⑧ MALE JAMB/MULLION



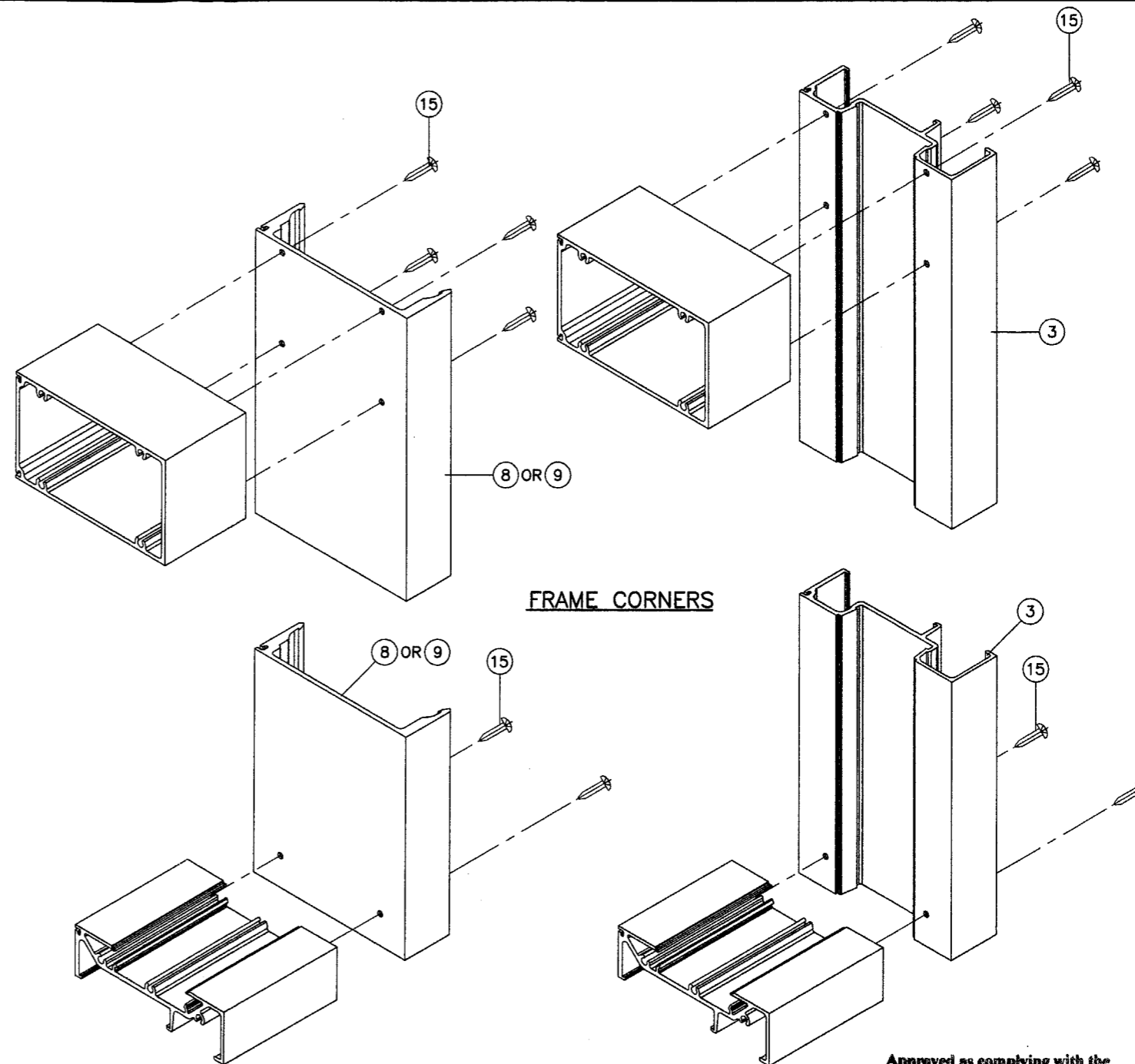
⑨A ALT. FEMALE MULLION



⑧A ALT. MALE MULLION



⑫ SETTING PIECE



FRAME CORNERS

Approved as complying with the Florida Building Code  
 Date March 02, 2006  
 NOA# 05-0301-02  
 Miami Dade Product Control Division  
 By Shaq I. Khandu

Engr. DR. HUMAYOUN FAROOQ  
 STRUCTURES  
 FLA. PE # 16557  
 C.A.N. 3538

FEB 09 2006

**AL-FAROOQ CORPORATION**  
 ENGINEERS, PLANNERS & PRODUCT DESIGN  
 1235 SW 87 AVE  
 MIAMI, FLORIDA 33174  
 TEL. (305) 264-8100 FAX. (305) 262-6978

PRO-TECH 75G ALUM CURTAIN WALL SYSTEM (S.M.I.)  
**CRAWFORD TRACEY CORPORATION**  
 3301 SW 13TH DRIVE  
 DEERFIELD BEACH, FL. 33442-8101  
 TEL. (954) 698-6888 FAX. (954) 698-6889

| no | date     | by                     | description |
|----|----------|------------------------|-------------|
| A  | 09.16.05 | REV. PER BCCO COMMENTS |             |
| B  | 02.08.06 | NO CHANGE THIS SHEET   |             |

date: 12-29-04  
 scale: 3/8" = 1"  
 dr. by: HAMID  
 chk. by:

drawing no.  
**W04-104**

sheet 13 of 13

*afc*

STORE W04-104CTC